

AMSONS INDUSTRIES
(1) LTD

1. ~~Ag. IFM~~ Ag. IFM (A)

Amsons Industries (T) Ltd requested for extension of Certificate of Incentives offered by TIC. The project has also submitted progress report. Study this report and advise as appropriately.

Ag. DIF 03/07/2018

2. Ag. DIF

The attached progress report explains the various stages of project implementation which have been reached so far. According to the report and the attached photos, the project is still under construction with good progress stage. However the report does not explain the reasons for the delay in implementation of the project as implementation started October 2015 while project was registered in June, 2013.

Based on the fact that project implementation is now ongoing and is at various levels of completion, with consideration of the actual dates of implementation of October, 2015, I suggest you consider them for a one year extension. You may wish to request for extension of none existence of the project reasons for delay in implementation.

Ag. IFM - 04/02/18

3. EXD, F.3, M1-2

Pursuant to an application for extending Certificate of Incentives No 042454 to import items, and following M.2, please see enclosed a letter rejecting application for extension for signature.

~~Ag~~ Ag DIF 05/07/2018

TANZANIA INVESTMENT CENTRE	
APPROVED BY:	<i>Johanne</i>
Signature:	(EXECUTIVE DIRECTOR)
Date:	05/07/2018

1

Tic

CONFIDENTIAL



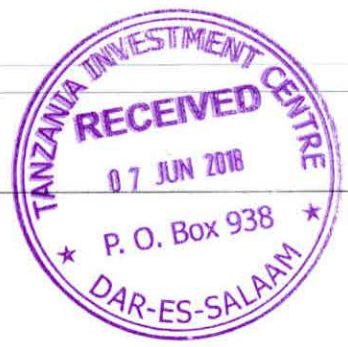
AMSONS INDUSTRIES (T) LTD

P.O.Box. 22786, Plot No. 62- 64, Kilwa Road
Mbagala Industrial Area, Dar Es Salaam, Tanzania
Email: Info@camelcement.net. Phone: + 255 655 019 099

Ref: AIL/06/06/ 2018.

06th June, 2018

EXECUTIVE DIRECTOR,
TANZANIA INVESTMENT CENTRE,
P. O. BOX 938
DAR-ES-SALAAM.



UFS

COMMISSIONER FOR CUSTOMS & EXCISE,
P.O.BOX 9053,
DAR ES SALAAM.

Dear Sir,

**RE: ADDITIONAL LIST OF CAPITAL DEEMED CAPITAL GOODS
CERTIFICATE OF INCENTIVES No. 042454 OF 19.06.2013**

The above heading has reference.

We are applying for additional list of capital / deemed capital goods for expansion of our cement plant at Mbagala.

We need to import some items as indicated in the additional list attached herewith.

Yours faithfully,
For Amsons Industries (T) Ltd

Rajagopal.
General Manager



certificate of incentives expired. M TIC

CONFIDENTIAL

Certified as True Copy
of the Original
Signature: _____
Date: 12/06/2017



0223133

THE UNITED REPUBLIC OF TANZANIA

For Executive Director
Tanzania Investment Centre

Certificate of Incentives

(Section 17 of the Tanzania Investment Act, 1997)

THIS CERTIFICATE REPLACE
EXTENDS THE PREVIOUS ONE
NO. 042454 ISSUED on No:
9/06/2016

AMENDMENT ON SECTION 10 & 11
HAVE BEEN EFFECTED

042454

W. W. W.

W. W. W.

This is to certify that

AMSONS INDUSTRIES (T) LTD

P.O. BOX 5950

of address.....

DAR ES SALAAM

has been granted a Certificate of Incentives to invest in a new, ~~rehabilitation & expansion~~
~~or equity of the~~ enterprise known as

AMSONS INDUSTRIES (T) LTD (CEMENT PLANT)

PLOT NO. 62-64 MBAGALA INDUSTRIAL AREA

Which is located at

TEMEKE - DAR ES SALAAM

Further particulars required by Section 17 of the Tanzania Investment Act are set out overleaf.

W. W. W.

Executive Director

Tanzania Investment Centre
P.O.Box 938, Dar es Salaam



Dated 7TH JUNE 2017

This Certificate is issued in accordance with the provisions of Section 17 of the Tanzania Investment Act, 1997 and subject to the conditions prescribed under item 14 and 15 hereafter:-

1. Shareholders
- | | Nationality | Shareholding (%) |
|--------------------------|------------------|------------------|
| Edha A. Nahdi | Tanzanian | 10 |
| Abdallah M. nahdi | Tanzanian | 90 |
2. Proposed Activities: **To Establish Cement Production For Civil Construction**
3. Sector: **Manufacturing** Subsector: **Cement**
4. Investment cost: Foreign - Local **USD 21.13m.** Total **USD 21.13m.**
5. Project Financing:
Equity **USD 21.13m.** Loans - Total **USD 21.13m.**
6. Source, terms and conditions of loan.....
7. Assets to be invested:
- | Capital items: | Foreign | Local | Total |
|----------------|---------|--------------------|--------------------|
| | - | USD 21.13m. | USD 21.13m. |
8. Technology Agreement **None**
9. Date of TIC Registration: **10th June 2013**
10. Implementation period **June 2013 - May 2018**
11. Operative date..... **June 2018**
12. Investment Incentive Grade: As defined in part III Section 19(1), (2) and Section 20 of the Tanzania Investment Act, 1997
- (i) Applicable Import Duty **And VAT as per Customs Tariff Act, 1976 & VAT Act. 2014**
- (ii) Applicable with-holding Tax **As per Income Tax Act. 2004 (as amended)**
- (iii) Eligibility of Capital Allowances **As per Income Tax Act. 2004 (as amended)**
13. Protection of Investment, Arbitration and Transfer of Foreign Currency: as defined in part III Section 21, 22 and 23 of the Act.
14. Conditions attached to this Certificate of Incentives
- (i) Date of Commencement of investment has to be notified to the Centre.
- (ii) Certificate not to be transferred, assigned or ammended
- (iii) Failure to commence implementation within two years invalidates Certificate
- (iv) Failure to operate investment must be notified to the Centre
- (v) Changes in shareholding, project activities and level of invested capital must be notified to the Centre
15. Additional conditions attached to Certificate
Finished Goods are Not Allowed Under This Certificate

Signed
Executive Director

NOTE: THE REQUIREMENTS UNDER WHICH THIS CERTIFICATE IS ISSUED ARE STATED OVERLEAF

COMMISSIONER FOR DOMESTIC REVENUE

OFFICIAL SEAL

ELIJAH G. MWANDUMBYA



STREET / AREA: KURASINI

PHYSICAL LOCATION: PLOT No. 365 366

TRA LOCATION: TEMEKE TAX OFFICE:

WITH EFFECT FROM: 30 November 2012

119-104-459

HAS BEEN REGISTERED WITH THE TANZANIA REVENUE AUTHORITY AND ASSIGNED THE TAXPAYER IDENTIFICATION NUMBER

THIS IS TO CERTIFY THAT
AMSONS INDUSTRIES (T) LIMITED

ISSUED UNDER SECTION 23 OF THE TAX ADMINISTRATION ACT (2015)

TAXPAYER IDENTIFICATION NUMBER (TIN)

FOR

CERTIFICATE OF REGISTRATION

TANZANIA REVENUE AUTHORITY



CTIN: 0823451

Materials to be imported			
Sl. No.	Material description	Material req.	UOM
1	ESAB PUG CUTTING MACHINE	1	Set
2	ESAB PUG TRACK	2	Nos
3	ESAB CUTTING NOZZLE FOR PUG MACHINE 'A' TYPE	2	Nos
4	HELIUM REGULATOR	2	Sets.
5	PLUMMER BLOCK SNL 210	2	Sets.
6	10 TON CHAIN BLOCK 10 MTR LIFT	1	Set
7	05 TON CHAIN BLOCK 10 MTR LIFT	1	Set
8	20 TON CHAIN BLOCK 10 MTR LIFT	1	Set
9	Bucket for bucket elevator (3 thk.) Drg. No. A4-CC-PP-DR-001 / R0	150	Nos.
10	ZSY224-45-1/IP 1500rpm-OP33/OP Torque 13179/Ratio 45 with set of additional spares as per proforma descriptions	7	Nos
11	DCY160-35.5II-S (with Backstop). 1500rpm OP42/OP Torque 4068/Ratio 35.5 with set of additional spares as per proforma invoice	7	Nos
12	Fuji frenic ACE series VFD (3Phase 75KW ROC 2.5A, FRN0004E2S 4GB	1	Nos
13	FRC 13 Resilient Coupling in pilot bore condition, Type Z (Fenner)	1	Nos
14	Elevator Euro Bold M10X50mm (plain head dia 40mm)(pitch 1.5mm) with four pointed prongs and as per proforma invoice descriptions. 400 pcs X 2 Box	800	Nos
15	FGC 9- Gear Coupling (Fenner)	1	Nos
16	Load Cell Model 1242	4	Nos
17	Grinding media	250	tons
	90 mm	15	tons
	80 mm	19	tons
	70 mm	13	tons
	60 mm	14	tons
	30 mm	34	tons
	25 mm	75	tons
	20 mm	59	tons
	17 mm	21	tons
18	3C x 300 Sq. mm; 33KV(UE) XLPE Insulated armoured cable - 36 kv Grade.	200	Mtrs.
19	3C x 240 Sq. mm; 11KV(UE) XLPE Insulated armoured cable - 12KV Grade	100	Mtrs.
20	33KV - End termination kit		
20.a	33KV, 3C x 300 Sq. mm Armoured indoor type (3M Make)	2	Nos
20.b	33 KV, 3C x 300 Sq. mm Armoured Outdoor type (3M Make)	2	Nos
21	11-KV - End termination kit		
21.a	11KV, 3C x 240 Sq. mm Armoured indoor type (3M Make)	19	Nos
21.b	11 KV, 3C x 240 Sq. mm Armoured Outdoor type (3M Make)	2	Nos
22	Supply of 33 KV, 1250 A, 25KA - 3 sec Indoor metal clad air insulated ICOG Panel with copper bus as per BOM	1	Set.
23	Dump hopper Capacity 10 Ton	1	Nos
24	Needle gate	1	Set.
25	Vibro feeder	1	Set.
26	Swing type hammer mill crusher	1	Set.
27	Inclined conveyor 50 tph.	1	Set.
28	Belt weigher	1	Set.
29	ADDITIONAL PANEL WITH AL. BUSBAR FOR FEEDERS AS PER DRIVE LIST(1 SS#)	1	Nos

30	ADDITIONAL LT MOTOR AS PER DRIVE LIST	1	Nos
31	CABLES AND ACCESSORIES (GLANDS & LUGS)	1	Nos
32	LPB FOR DOL & RDOL STARTERS	9	Nos
33	EARTHING FOR CRUSHER AREA	1	Lot
34	LIGHITNG AND ACESSORIES FOR CRUSHER AREA	1	Lot
35	CABLE TRAYS	1	Lot
36	PRESSURE SWITCH,DP swith 1 each, ZSS - 3 Nos	1	Set.
37	Additional DI,DO	1	Set.
38	CLINKER WEIGH FEEDER - 100 TPH	1	NO
39	CLINKER WEIGH FEEDER - 100 TPH	1	NO
40	GYPSUM WEIGH FEEDER - 10 TPH	1	NO
41	LIMESTONE WEIGH FEEDER - 30 TPH	1	NO
42	FILTER REGULATOR WITH PRESSURE GUAGE - 532 BF1	1	NO
43	ROTARY AIRLOCK	1	NO
44	BELT CONVEYOR (BC-01)		
45	BELT - 800 MM WIDTH	115	MTRS
46	TAIL FRAME	1	NO
47	HEAD FRAME	1	NO
48	STRINGER AND SHORT SUPPORT	1	NO
49	DISCHARGE CHUTE	1	NO
50	VERTICAL GRAVITY TAKE UP	1	NO
51	COUNTER WEIGHT ARRANGEMENT	1	NO
52	RAIN HOOD	1	NO
53	GEAR BOX	1	NO
54	COUPLING FOR GEAR BOX	1	SET
55	BELT CONVEYOR (BC-02)		
56	BELT - 800 MM	42	MTRS
57	TAIL FRAME	1	NO
58	HEAD FRAME	1	NO
59	STRINGER AND SHORT SUPPORT	1	NO
60	DISCHARGE CHUTE	1	NO
61	SCREW TAKE UP	1	NO
62	GEARED MOTOR	1	NO
63	COUPLING FOR GEARED MOTOR	1	NO
64	PIN BUSH COUPLING FOR GEARED MOTOR	1	NO
65	MILL PREJACKING & BEARING LUBE	1	NO
66	BAG FILTER - 40680 m3/hr	1	NO
67	FILTER REGULATOR WITH PRESSURE GUAGE - 562 BF1	2	NOS
68	ROTARY AIRLOCK	2	NO
69	ACTUATOR & VIBRATION SENSOR -II LOT	1	NO
70	BLOWER	1	NO
71	BLOWER	1	NO
72	FLOW METER FOR REJECTS - 200 TPH	1	NO
73	FILTER REGULATOR WITH PRESSURE GUAGE - 562 BF2	1	NOS
74	ROTARY AIRLOCK	1	NO
75	ACTUATOR & VIBRATION SENSOR -II LOT	1	NO

76	LVC VENT BAG FILTER - 36620 m3/hr	1	NO
77	FILTER REGULATOR WITH PRESSURE GUAGE - 562 BF3	1	NOS
78	ROTARY AIRLOCK	1	NO
79	ROTARY AIRLOCK	1	NO
80	ACTUATOR & VIBRATION SENSOR -II LOT	1	NO
81	BLOWER	1	NO
82	FILTER REGULATOR WITH PRESSURE GUAGE - 592 BF1	1	NOS
83	ROTARY AIRLOCK	1	NO
84	HAG 2MKCAL/HR - 1st lot	1	NO
85	FILTER REGULATOR WITH PRESSURE GUAGE - 592 BF2	2	NOS
86	ROOTS BLOWERS - 660 M3/HR	2	NOS
87	BLOWER	1	NO
88	FILTER REGULATOR WITH PRESSURE GUAGE - 612 BF1	1	NO
89	ROTARY AIRLOCK	1	NO
90	BAG FILTER - 25000 m3/hr	1	NO
91	FILTER REGULATOR WITH PRESSURE GUAGE - 662 BF1	1	NO
92	FAN WITH MANUAL INELT DAMPER - 27500 m3/hr	1	NO
93	ACTUATOR FOR DAMPER	1	NO
94	ROTARY AIRLOCK	1	NO
95	SCREW COMPRESSOR - 660 m3/ hr	1	NO
96	REFRIGERATED AIR DRYER	1	NO
97	LONG SWEEP ELBOW AND UNION FOR BAG FLITERS	252	NOS
98	SEALANT	1	NO
99	FABRICATED ITEMS - PP,BE & SILO	1	NO
100	110V DC Battery and Battery charger		
100.1	BATTERY 200 AH ,VRLA, SMF	1	No.
101	LT Cable glands		
101.01	CBW01	970	Nos
101.02	CBW02	32	Nos
101.03	CBW03	74	Nos
101.04	CBW05	202	Nos
101.05	CBW06	30	Nos
101.06	CBW07	10	Nos
101.07	CBW08	10	Nos
101.08	CBW09	6	Nos
101.09	CBW011	20	Nos
101.1	CBW01S	280	Nos
101.11	CBW04A	20	Nos
101.12	CBW02A	250	Nos
101.13	CBW01SS	105	Nos
	ELECTRICAL TERMINAL CONNECTOR (LUGS)		
101.14	CCPI-17	13000	Nos
101.15	CRSI-7067	200	Nos
101.16	CCUS05	460	Nos
101.17	CCPI18	200	Nos
101.18	CCUS06	160	Nos

101.19	CCUS07	60	Nos
101.2	CCUS08	50	Nos
101.21	CCUS09	30	Nos
101.22	CCUS10	30	Nos
101.23	CCUS15	50	Nos
101.24	CCUS17	10	Nos
101.25	CCUS20	60	Nos
101.26	CCUS30	100	Nos
101.27	CCUS26	20	Nos
101.28	CCUS23	30	Nos
102	HARDWARES GI bolt nut and anchor fasters		
102.01	Metallic Anchor Fastener 10 x 100 mm	400	Nos
102.02	Metallic Anchor Fastener 12 x 100 mm	400	Nos
102.03	Hexoganal Head bolt & Nut (Cadmium coated) 12 x 50 mm	600	Nos
102.04	Hexoganal Head bolt & Nut (Cadmium coated) 10 x 30 mm	600	Nos
102.05	Hexoganal Head bolt & Nut (Cadmium coated) 8 x 30 mm	800	Nos
102.06	Hexoganal Head bolt & Nut (Cadmium coated) 6 x 30 mm	800	Nos
102.07	Cadmium coated Flat Washer 12mm	1200	Nos
102.08	Cadmium coated Flat Washer 10mm	1200	Nos
102.09	Cadmium coated Flat Washer 8mm	1600	Nos
102.1	Cadmium coated Flat Washer 6mm	1600	Nos
102.11	Cadmium coated Spring Washer 12mm	600	Nos
102.12	Cadmium coated Spring Washer 10mm	600	Nos
102.13	Cadmium coated Spring Washer 8mm	800	Nos
102.14	Cadmium coated Spring Washer 6mm	800	Nos
102.15	1" Electrical conduit pipe (10 feet each length)	30	Nos
102.16	50" PVC flexible conduit pipe for Proximity sensor	50	Nos
103	230V PLUG & SOCKET	20	Nos
103.01	RUBBER MAT		
103.02	2mm x 1mm x 2mm Thickness	45	Nos
103.03	2mm x 1mm x 2.5mm Thickness	12	Nos
104	LT MOTORS LOT 2		
104.01	562FA1,9.3KW, Airslide blower	1	Nos
104.02	562FA2,9.3KW, Airslide blower	1	Nos
104.03	562FA3,9.3KW, Airslide blower	1	Nos
104.04	592FA1,7.5KW, Airslide blower	1	Nos
104.05	592FA2,7.5KW, Airslide blower	1	Nos
104.06	592FA5,7.5KW, Airslide blower	1	Nos
104.07	612FA3,7.5KW, Airslide blower	1	Nos
104.08	592FA3,7.5KW, Airslide blower	1	Nos
104.09	592FA4,7.5KW, Airslide blower	1	Nos
104.10	612FA1,7.5KW, Airslide blower	1	Nos
104.11	612FA2,7.5KW, Airslide blower	1	Nos
104.12	562BL1,11KW, Fluidizing Blower	1	Nos
104.13	592BL1,37KW, Roots Blower	1	Nos
104.14	592BL2,37KW, Roots Blower	1	Nos

105	PRESSURE SWITCH	12	Nos
106	DIFF. PRESSURE SWITCH	12	Nos
107	LEVEL SWITCH	7	Nos
108	ZSS	20	Nos
109	VIBRATION TRANSMITTER	6	Nos
110	HOOTER	5	Nos
111	HOOKUP MATERIAL		
111.01	1/2"NPT(M)X12MM OD SS STRAIGHT CONNECTOR TO ASTM A269 TP 304	38	Nos
111.02	12MM ODX1.24MM THK SS TUBE TO ASTM A269 TP 304	14	Meters
111.03	1/2" NPT (F) EQUAL TEE	14	Nos
111.04	1/2"NB 3000# FCS SW UNION TO ASTM A105 GRADE 2	42	Nos
111.05	1/2" NB S/40 SMLS C.S PIPE TO ASTM A106 GRADE B	396	Meters
111.06	1/2"NB 800# FCS SW BALL VALVE TO ASTM A105 GRADE 2 WITH SS304 TRIM	74	Nos
111.07	1/2" NPT (M) PLUG	14	Nos
111.08	1/2"NBX4" LONG S/40 NPT (M) TH X TH PIPE NIPPLE TO ASTM A106 GRADE B	60	Nos
111.09	1 1/2" NPT (M) PLUG	14	Nos
111.1	1 1/2"X1/2" REDUCING TEE NPT (F) astm A105	14	Nos
111.11	11/2" NB X 0.5 MM LONG S/40 NPT(M)TH XPL PIPE TO ASTM A106 GRADE B	39	Nos
111.12	11/2" ANSI 150# C.S Flange with Gaskets bolts and nuts	11	Nos
111.13	11/2" NB X 0.5 MM LONG S/40 NPT(M)TH XPL PIPE TO ASTM A106 GRADE B	11	Nos
111.14	11/2" NPT (F) CAP TO ASTM A105 GRADE2	25	Nos
111.15	1/2" NPT (F)3000# FCS SCWD UNION TO ASTM A105 GRADE2	84	Nos
111.16	1/2" NB 3000# FCS SW EQUAL TEE TO ASTM A105 GRADE2	24	Nos
111.17	1/2"NB 3000# FCS SW COUPLING TO ASTM A105 GRADE 2	14	Nos
111.18	DUST POT 4" MS PIPE 1/2" LONG WITH 1/2" SW AT SIDE INLET AND 1/2" NPT(F)AT TOP AND BOTTOM WITH 1/2" NPT(M)PLUG AT BOTTOM	14	Nos
111.19	1/2"NBX4" LONG S/40 NPT (M) TH X TH PIPE NIPPLE TO ASTM A106 GRADE B	116	Nos
111.2	1/2"NB 3000# FCS SW HALF COUPLING TO ASTM A105 GRADE 2	36	Nos
111.21	11/2" NB X 0.5 MM LONG S/40 NPT(M)TH XPL PIPE TO ASTM A106 GRADE B	7	Nos
112	Motor for Elevator (592 BE1)	1	No

Material	Item	Size	Length	Qty.	Total weight
		MM	MM	Pcs.	Ton
	1	1500	6000		0.283
	5	2000	8000		6.280
Q235B plate	8	2000	5800		102.866
	9	2000	L		7.536
	10	2000	L		22.608
	11	2000	L		23.550
	12	2000	L		5.652
	Q235B eq. plate	3	1250	5800	
NM400 plate	6	2200	10000		5.181
Q235B eq. plate	7	1500	6000		0.707
Q235B flat	19	100	6000		6.443
L 245 flat	36	25	6000		10.000
	13	50*50*6	6000	310	8.305
	14	75*75*6	6000	50	2.072
	15	75*75*8	6000	430	23.297
Q235B ANGLE	16	63*63*6	6000	416	14.751
	17	90*90*8	6000	62	4.072
	18	100*100*10	9000	8	1.089
	29	250*80*9	12000	76	28.578
	30	200*73*7	12000	80	21.732
Q235B CHANNEL	31	160*63*6.5	9000	294	45.617
	33	100*48*5.3	6000	706	42.39
	34	80*43*5	6000	8	0.386
Q235B BEAM	21	100*68*4.5*7.6	6000	5	0.338
	22	(200*100*7*11.4)	12000	38	12.736
	23	(300*126*9*14.4)	12000	45	25.965
	24	(400*142*10.5*16.5)	12000	7	5.678
	25	(450*150*11.5*18)	12000	8	7.72
	26	(560*166*12.5*21)	12000	4	5.103
	27	(630*176*13*22)	12000	2	2.914
	28	(250*116*8*13)	12000	41	18.748
	42	42.2*3.56	6000	600	11.204
Q235B WELDING PIPE	43	33.4*3.38	6000	127	1.706
	44	168.3*5	6000	19	2.25
	45	219.1*6	6000	21	3.92
20# SMLS PIPE	46	273*6.5	11000-12500	7	3.62
	47	325*7	11000-12500	1	0.67
	48	351*8	11000-12 500	3	2.48

PROPOSED CEMENT FACTORY EXPANSION – CEMENT MILL UNIT, SILOS & LOAD CENTER FOR
AMSONS INDUSTRY (LTD) AT CAMEL CEMENT MBAGALA.

PARTIAL PROGRESS REPORT FOR ONGOING CONSTRUCTION WORK – MAY 2017



CONSTRUCTION PROGRESS AT CAMEL CEMENT

LOCATION: MBAGALA CEMENT FACTORY

DATE: 12.06.2018

INTRODUCTION

Camel cement expansion project consist of the several units to be constructed according to the plan and design prepared by various technical entities to meet the target of the client. It consists/ includes the cement mill structures, vertical storage silos (rc foundation & steel silo wall), power house (load centre building), packing plant and hot air generation structure.

This project consists of various technical teams to support/ensure the smooth execution of the designed project and hence value for money.

- Design team *Hallmark tech. service-India &
M/s. LNV Technology - India*
- Machinery supplier *M/s. LNV Technology - India*

CIVIL CONSTRUCTION WORK

The Contractor has **signed the contract** in *august 2015* for project execution. **Site handing over** was done in *August 2015* and **work execution/implementation** start effectively at the end of *October 2015* by excavation of cement mill foundation and Completing the building now. Due to some issues the civil work has delayed.

Cement mill building, Cement silo civil structure and Load centre's Civil work 90% Completed, Packing plant finishing work in progress. And other finishing and painting work in progress.

MECHANICAL MACHINERIES ERECTION AND SITE FABRICATION

Most of the equipments are supplied from M/s. LNVT – India and some of the items fabricated at site. In that 75 of equipment received from M/s. LNVT, due to some reason remaining materials will receive soon.

In site fabrication items are in progress, due to delay of material it getting slow. Some raw material received in port, after clearing the material will improve the progress.

EXPANSION PROJECT UNITS

1: Cement mill building:

Cement mill unit (CM-2) is located at REAR part of the plot close to the existing mill (CM-1). It consists of the **sub structure** (foundations) at level -4.8m footings (base) for superstructure columns and raft bases on top for machine column pedestals (support) positioned at -3.6m below existing ground level and plinth (ground) beams at level -0.5m level to tie/ brace the whole structure.

Building is ready for erection, partially machineries received from M/s. LNVT – India, Also erection work in progress. Some of the materials are in transit

2. Cement Silo:

Cement silo foundation is 95 % Completed, steel silo fabrication in progress. Some material yet to receive from port.

Major equipment like, bucket elevator, airsides and its fans are received and read for erection. Some items are in transit from M/s. LNVT – India.

3. Packing plant:

Packing plant civil construction in progress, it may complete end of this month.

Packing plant machineries received from M/s. Ventomatic – FLS from India.

Packing plant MCC room in under construction that also in finishing stage.

Remaining materials are in transit.

3. Load center & CCR Room:

Load center civil work 95% Completed, remaining work in progress.

Electrical panel and related items are received.

Panel base frames and cable supporting frames are made ready for erection.

GENERAL OVERVIEW OF THE PROJECT

Construction progress

Construction work in progress is not in a good speed.

As per working schedule we are lagging behind by almost 10month to all three construction items under one contract. The main problem noted is on the contractor side which are-

- The delay of material delivery to site.

Weekly meetings

The project team is managing to have a weekly meeting to see the progress, challenges facing the ongoing project and safety & quality issues.

The addressed delay findings were always discussed in the meeting but still the contractor was in position to guarantee on big changes but unfortunately is not happening.

Quality assurance and control measures (QA&QC)

For both QA & QC at site, we are making sure that for every material received to site eg. To compare the equipments as per drawing and requirements.

Safety

No any accident incident happened/ reported at construction site which could harm the workers only small injuries were addressed and attended with the first aid kit at site.

Time to time reminding workers to be safely working at site by using proper ppe on working place ,

Also in reminding the contractor to supply the missing ppe once noticed helps also to improve the working condition'.

Fabrication work progress Report:

Cement silo fabrication



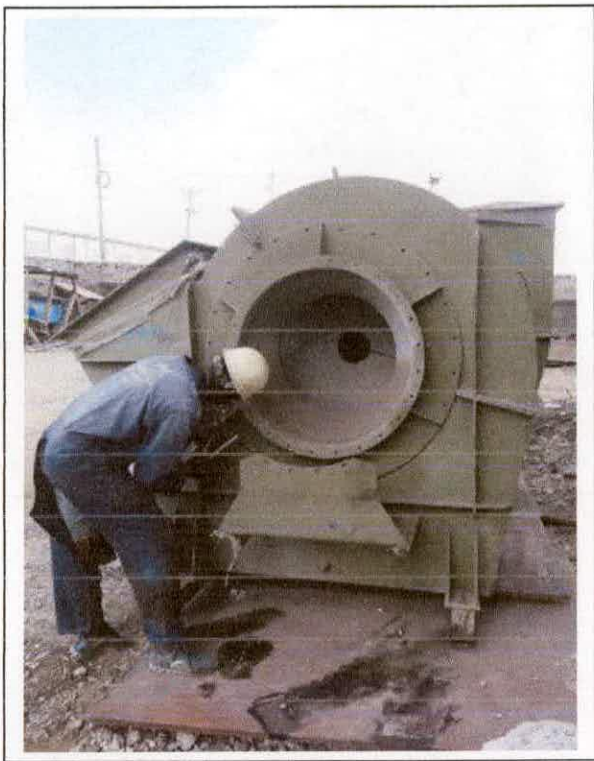
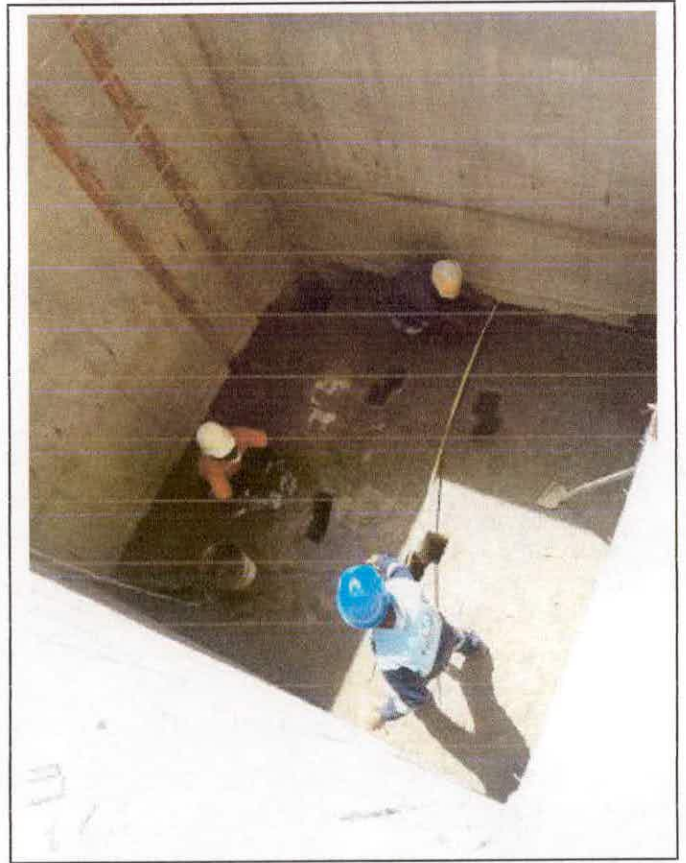
Cement mill Ducting Fabrication:



Staircase Fabrication and erection:



Machineries erection at mill building:



Load center erection:



Packing plant:



























TANZANIA REVENUE AUTHORITY

2

TRA/CE/C/P.20/08/5253

31st August, 2015

Managing Director,
Amsons Industries (T) Limited,
P.O.BOX 5950,
DAR ES SALAAM.

**RE: DUTY /VAT EXMPTION ON CAPITAL/DEEMED CAPITAL GOODS-
CERTIFICATE OF INCENTIVES NO.042454 OF 19.06.2013
TIN: 119-104-459**

We are writing in response to your letter Ref.AIL/24/08/2015 of 21st August, 2015, as supported by the letter Ref. TICC/PP.10/042454/13 of 26th August, 2015 from Tanzania Investment Centre regarding the captioned subject.

We hereby approve and confirm acquisition of Cement Manufacturing Plant with its accessories as per eleven page list herewith attached as capital/deemed capital goods for facilitation of your project with certificate of incentives mentioned above.

The approved deemed capital goods will be exempted from Import Duty to the tune of 90% of Import Duty payable

"Together We Build Our Nation"


Novat Kaboigora

For: COMMISSIONER FOR CUSTOMS AND EXCISE.

NK/
C.C: Manager Tax Exemption,
C.C: Manager- TRA Temeke,
C.C: Executive Director,
Tanzania Investment Centre,
Dar es Salaam.

ISO 9001:2008 Certified

CUSTOMS & EXCISE DEPARTMENT

Sokoine Drive, P.O. Box 9053, Dar es Salaam, Tanzania

Tel: 255-22-2117765 or 255-22-2127783/4/6/8 Fax: 255-22-2138878/2135193

AMSONS CEMENT EXPANSION ITEMS PRICE LIST AUG 2015

Client: M/S Amsons Industries

Project: 70 TPH Cement Grinding in Tanzania

Contract/PO/LOI No: AI/LNVT/JUNE/2014 Dt: 04-June-14

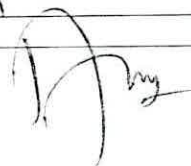
WO No: CM-14-369

Ref: LNVT/AI/POWS/0

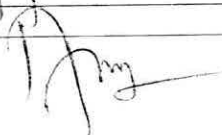
S.No	Equipment Description	Unit	Qty
Billing Schedule for the supply of Mechanical Components			
1	A14 PLAIN WASHER	NOS	4
2	ACTUATOR FOR DAMPER	NO	1
3	AERATION SYSTEM FOR CEMENT SILO	NO	1
4	AIR PIPING WITH VALVES FOR BLOWER	NO	1
5	AIR PIPING WITH VALVES FOR BLOWER	NO	1
6	AIR PIPING WITH VALVES FOR BLOWER	NO	1
7	AIR PIPING WITH VALVES FOR BLOWER	NO	1
8	AIR PIPING WITH VALVES FOR BLOWER	NO	1
9	AIR PIPING WITH VALVES FOR BLOWER	NO	1
10	AIR PIPING WITH VALVES FOR BLOWER	NOS	2
11	AIR PIPING WITH VALVES FOR BLOWER	NO	1
12	AIR PIPING WITH VALVES FOR BLOWER	NO	1
13	AIR RECEIVER - 5 m3	NOS	3
14	AIR SLIDE	NO	1
15	AIR SLIDE	NO	1
16	AIR SLIDE	NO	1
17	AIRSLIDE	NO	1
18	AIRSLIDE	NO	1
19	AIRSLIDE	NO	1
20	AIRSLIDE	NO	1
21	AIRSLIDE	NO	1
22	AIRSLIDE	NOS	4
23	AIRSLIDE	NO	1
24	AIRSLIDE	NO	1
25	ALIGNING SCREW FOR HELICAL GIRTH GEAR	NOS	32
26	BAG CAGES - 532 BF1	NOS	160
27	BAG CAGES - 562 BF1	NOS	445
28	BAG CAGES - 562 BF2	NOS	95
29	BAG CAGES - 562 BF3	NOS	481
30	BAG CAGES - 592 BF1	NOS	65
31	BAG CAGES - 592 BF2	NOS	95
32	BAG CAGES - 612 BF1	NOS	47
33	BAG CAGES - 662 BF1	NOS	285
34	BAG CARRYING CONVEYOR	NO	1
35	BAG CARRYING CONVEYOR	NO	1
36	BAG DIVERTOR	NO	1
37	BAG FILTER - 15000 m3/hr	NO	1
38	BAG FILTER - 40680 m3/hr	NO	1
39	BAG FILTER - 6000 m3/hr	NO	1
40	BAG FILTER - 10000 m3/hr	NO	1
41	BAG FILTER - 10000 m3/hr	NO	1
42	BAG FILTER - 25000 m3/hr	NO	1
43	BAG FILTER - 5000 m3/hr	NO	1
44	BEARING CARTRIGE - CLASSIFIER	NO	1
45	BELT - 800 MM	MTRS	42
46	BELT - 800 MM WIDTH	MTRS	115
47	BELT CONVEYOR (BC -01)		

48	BELT CONVEYOR (BC-02)	NO	1
49	BELT SWAY SWITCH	NO	1
50	BELT SWAY SWITCH	NO	1
51	BEND PULLEY	NOS	2
52	BLOWER	NO	3
53	BLOWER	NO	1
54	BLOWER - 1300 m3/hr	NO	1
55	BLOWER - 1300 m3/hr	NO	1
56	BLOWER - 400 m3/hr	NOS	2
57	BLOWER - 400 m3/hr	NO	1
58	BLOWER - 600 m3/hr	NO	1
59	BLOWER - 700 m3/hr	NO	1
60	BLOWER - 850 m3/hr	NO	1
61	BOTTOM DUCT - CLASSIFIER	NO	1
62	BOTTOM SUPPORT WITH GUIDE ROLLER	NO	1
63	BUCKET ELEVATOR - 100 TPH	NO	1
64	BUCKET ELEVATOR - 150 TPH	NO	1
65	BUCKET ELEVATOR - 250 TPH	NO	1
66	CARRYING IDLERS	NOS	93
67	CARRYING IDLERS	NOS	27
68	CEMENT MILL 3.8 X 13.5 M		
69	CERAMIC TILES - CLASSIFIER	NO	1
70	CIRCULATING AIR FAN - 1,90,000 M3/HR	NO	1
71	CLASSIFIER VENT FAN - 44690 m3/hr	NO	1
72	CLINKER WEIGH FEEDER - 100 TPH	NO	1
73	CLINKER WEIGH FEEDER - 100 TPH	NO	1
74	CLOSING PLATE	NO	1
75	COUNTER WEIGHT	NO	1
76	COUNTERSHAFT ASSEMBLY	NO	1
77	DAMPER WITH ACTUATOR	NO	1
78	DAMPER WITH ACTUATOR	NO	1
79	DEFLECTOR ROLLER	NOS	6
80	DISCHARGE CHUTE	NO	1
81	DISCHARGE CHUTE	NO	1
82	DISCHARGE END TRUNNION LINER	NO	1
83	DISCHARGE HOUSING ASSEMBLY WITH FOUNDATION BOLTS	NO	1
84	DOZING VALVES	NOS	4
85	DRIVE BASE FRAME - CLASSIFIER	NO	1
86	DRYING CHAMBER ARRANGEMENT WITH FASTENERS	NO	1
87	DRYING CHAMBER DIAPHRAGM	NO	1
88	ELECTRIC HOIST - 3 T	NO	1
89	ELECTRIC HOIST - 4 T	NO	1
90	ELECTRIC HOIST - 2 T	NO	1
91	ELECTRIC HOIST - 4 T	NO	1
92	ELECTRIC HOIST - 6 T	NO	1
93	ELECTRIC HOIST FOR BUCKET ELEVATOR MAINTENANCE - 2 T	NO	1
94	ELECTRONIC EAR	NO	1
95	END DISCHARGE DIAPHRAGM	NO	1
96	EOT CRANE - 20 T	NO	1
97	EXPANSION / ISOLATION JOINT	NOS	14
98	FAN WITH MANUAL INLET DAMPER - 27500 m3/hr	NO	1
99	FAN WITH MANUAL INLET DAMPER- 11,000 m3/hr	NO	1
100	FAN WITH MANUAL INLET DAMPER - 11500 m3/hr	NO	1
101	FAN WITH MANUAL INLET DAMPER - 5500 m3/hr	NO	1
102	FAN WITH MANUAL INLET DAMPER - 6600 m3/hr	NO	1

Approved



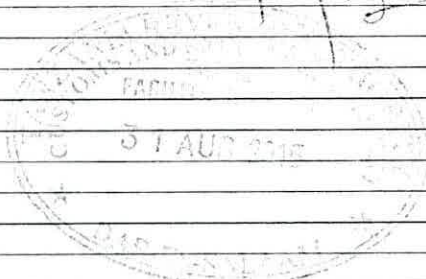
103	FAN WITH MOTORIZED INLET DAMPER - 16500 m3/hr	NO	1
104	FEED & DISCHARGE HEADS	NOS	2
105	FEED CHUTE ASSEMBLY	NO	1
106	FEED END TRUNNION ASSEMBLY ITEMS		
107	FEED END TRUNNION LINER	NO	1
108	FEED HEAD LINERS	NOS	20
109	FILTER BAGS - 532 BF1	NOS	160
110	FILTER BAGS - 562 BF1	NOS	445
111	FILTER BAGS - 562 BF2	NOS	95
112	FILTER BAGS - 562 BF3	NOS	481
113	FILTER BAGS - 592 BF1	NOS	65
114	FILTER BAGS - 592 BF2	NOS	95
115	FILTER BAGS - 612 BF1	NOS	47
116	FILTER BAGS - 662 BF1	NOS	285
117	FILTER REGULATOR WITH PRESSURE GUAGE - 532 BF1	NO	1
118	FILTER REGULATOR WITH PRESSURE GUAGE - 562 BF1	NOS	2
119	FILTER REGULATOR WITH PRESSURE GUAGE - 562 BF2	NOS	1
120	FILTER REGULATOR WITH PRESSURE GUAGE - 562 BF3	NOS	1
121	FILTER REGULATOR WITH PRESSURE GUAGE - 592 BF1	NOS	1
122	FILTER REGULATOR WITH PRESSURE GUAGE - 592 BF2	NOS	2
123	FILTER REGULATOR WITH PRESSURE GUAGE - 612 BF1	NOS	1
124	FILTER REGULATOR WITH PRESSURE GUAGE - 662 BF1	NOS	1
125	FLAP VALVE	NO	1
126	FLAP VALVE FOR LVC FEEDING	NO	1
127	FLOW METER FOR REJECTS - 200 TPH	NO	1
128	FLUIDISING CHAMBER- CLASSIFIER	NO	1
129	FOUNDATION BOLTS FOR COUNTERSHAFT ASSEMBLY	NOS	8
130	FOUNDATION BOLTS FOR MAIN BEARING HOUSING	NOS	8
131	FRAME - CARRYING IDLERS	NOS	31
132	FRAME - CARRYING IDLERS	NOS	9
133	FRAME - IMPACT IDLERS	NOS	16
134	FRAME - IMPACT IDLERS	NOS	4
135	FRAME - RETURN IDLERS	NOS	16
136	FRAME - RETURN IDLERS	NOS	5
137	FRAME - SELF ALIGNING CARRYING IDLERS	NOS	2
138	FRAME - SELF ALIGNING CARRYING IDLERS	NO	1
139	FRAME - SELF ALIGNING RETURN IDLERS	NOS	2
140	FRAME - SELF ALIGNING RETURN IDLERS	NO	1
141	FRAME - TRANSITION IDLERS	NOS	2
142	FRAME - TRANSITION IDLERS	NOS	2
143	FRESH AIR DAMPER	NO	1
144	FRESH AIR DAMPER - 1100 DIA	NO	1
145	GEAR BOX WITH COUPLINGS	NO	1
146	GEAR BOX WITH COUPLINGS	NO	1
147	GEAR BOX WITH COUPLINGS	NO	1
148	GEAR GUARD ASSEMBLY WITH FOUNDATION BOLTS	NO	1
149	GEARBOX WITH COUPLINGS - CLASSIFIER	NO	1
150	GRIT CONE ASSEMBLY - CLASSIFIER	NO	1
151	GUIDE VANES - CLASSIFIER	NO	1
152	GYPSTUM WEIGH FEEDER - 10 TPH	NO	1
153	HAG 2MKCAL/HR	NO	1
154	HARDWARE FOR LINERS	NO	1
155	HARDWARES FOR FEED & DISCHARGE HEADS		
156	HARDWARES FOR LVC	NO	1
157	HEAD FRAME	NO	1

Approved


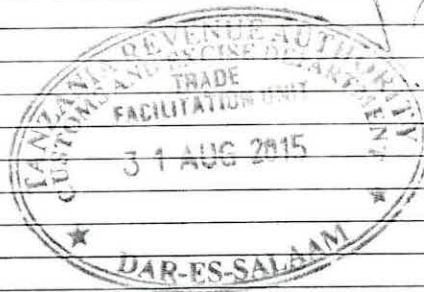
158	HEAD FRAME	NO	1
159	HEAD PULLEY	NO	1
160	HEAD PULLEY	NO	1
161	HELICAL GIRTH GEAR IN HALVES	NOS	2
162	HEX. LOCK NUT M42	NOS	60
163	HEX. LOCK NUT M42	NOS	60
164	HEX.BOLT M30 X 125 LG	NOS	20
165	HEX.HEAD BOLT M12 X 30 LG	NOS	28
166	HEX.HEAD BOLT M12 X 40 LG	NOS	12
167	HEX.HEAD BOLT M30 X 140 LG FOR FEED HEAD	NOS	20
168	HEX.HEAD BOLT M36 X 250 LG FOR FEED HEAD	NOS	40
169	HEX.HEAD BOLT M36 X 280 LG FOR FEED HEAD	NOS	40
170	HEX.HEAD BOLT M42 X 240 LG FOR DISCHARGE HEAD	NOS	12
171	HEX.HEAD BOLT M42 X 240 LG FOR FEED HEAD	NOS	60
172	HEX.HEAD BOLT M42 X 330 LG FOR DISCHARGE HEAD	NOS	48
173	HEX.HEAD SCREW M12 X 45 LG	NOS	4
174	HEX.LOCK NUT M36	NOS	80
175	HEX.NUT M12	NOS	4
176	HEX.NUT M30	NOS	20
177	HEX.NUT M30	NOS	20
178	HEX.NUT M36	NOS	80
179	HEX.NUT M42	NOS	60
180	HEX.NUT M42	NOS	60
181	HIGH LEVEL INDICATOR FOR SURGE	NO	1
182	HOIST - 4 T	NO	1
183	IMPACT IDLERS	NOS	48
184	IMPACT IDLERS	NOS	12
185	LIMESTONE WEIGH FEEDER - 30 TPH	NO	1
186	LOAD CELL FOR BIN	NO	1
187	LONG SWEEP ELBOW AND UNION FOR BAG FLITERS	NOS	252
188	LOUVRE DAMPER	NO	1
189	LOUVRE DAMPER WITH ACTUATOR	NO	1
190	LOWER CASING - CLASSIFIER	NO	1
191	LUBRICATION SYSTEM FOR GEARBOX	NO	1
192	LUBRICATION SYSTEM FOR GIRTH GEAR SPRAY	NO	1
193	LVC BLOWER - 3600 m3/hr	NO	1
194	LVC VENT BAG FILTER - 36620 m3/hr	NO	1
195	M12 HEX NUT	NOS	4
196	M60 X 24 LOCK NUT FOR HELICAL GIRTH GEAR	NOS	4
197	M60 X 48 NUT FOR HELICAL GIRTH GEAR	NOS	4
198	M64 X 25.6 LOCK NUT FOR HELICAL GIRTH GEAR	NOS	20
199	M64 X 54.2 NUT FOR HELICAL GIRTH GEAR	NOS	20
200	MAGNEHELIC GUAGE - 532 BF1	NO	1
201	MAGNEHELIC GUAGE - 562 BF1	NO	1
202	MAGNEHELIC GUAGE - 562 BF2	NO	1
203	MAGNEHELIC GUAGE - 562 BF3	NO	1
204	MAGNEHELIC GUAGE - 592 BF1	NO	1
205	MAGNEHELIC GUAGE - 592 BF2	NO	1
206	MAGNEHELIC GUAGE - 612 BF1	NO	1
207	MAGNEHELIC GUAGE - 662 BF1	NO	1
208	MAIN BEARING HOUSING ACESSORIES	NOS	2
209	MIDDLE DIAPHRAGM	NO	1
210	MILL SHELL WITH ACESSORIES	NO	1
211	MILL DISCHARGE FLAP VALVE	NO	1
212	MILL PREJACKING & BEARING LUBE	NO	1

Approved

[Signature]



213	MILL SHELL LINERS WITH HARDWARE	NO	1
214	MILL TRUNION BEARING RTD & COUNTER SHAFT RTD -PT 100;	NOS	4
215	MILL VENT FAN - 44690 m3/hr	NO	1
216	MISC ITEMS	NO	1
217	PACKING 54 X 900 ID X 960 OD	NO	1
218	PACKING MACHINE - 8 SPOUT & CONTROL PANEL	NO	1
219	PIPING FROM BLOWER TO HEADER	NOS	2
220	PLAIN WASHER A13	NOS	4
221	PLAIN WASHER A33	NOS	20
222	PLAIN WASHER A37	NOS	80
223	PLAIN WASHER A45	NOS	60
224	PLAIN WASHER M30	NOS	20
225	PLAIN WASHER M42	NOS	60
226	PRESSURE RELEASE VALVE	NO	1
227	PULL-CORD SWITCH	NO	1
228	PULL-CORD SWITCH	NO	1
229	PULL-CORD,BELT SWAY & ZEOR SPEED SWITCH BRACKET	NO	1
230	PULL-CORD,BELT SWAY & ZERO SPEED SWITCH BRACKET	NO	1
231	PULSE VALVES - 562 BF1	NOS	145
232	RADIAL BAG DISCHARGE CONVEYOR	NO	1
233	RAIN HOOD	NO	1
234	REFRIGERATED AIR DRYER	NO	1
235	REJECT CONE VALVE - 700 DIA	NO	1
236	RETURN IDLERS	NOS	16
237	RETURN IDLERS	NOS	5
238	ROOF CASING - CLASSIFIER	NO	1
239	ROOTS BLOWERS - 660 M3/HR	NOS	2
240	ROTARY AIR LOCK - 250 SQ.	NO	1
241	ROTARY AIR LOCK - 250 SQ.	NO	1
242	ROTARY AIRLOCK - 250 SQ.	NO	1
243	ROTARY AIRLOCK - 250 SQ.	NO	1
244	ROTARY AIRLOCK - 250 SQ.	NO	1
245	ROTARY AIRLOCK - 250 SQ.	NO	1
246	ROTARY AIRLOCK - 300 SQ.	NO	1
247	ROTARY AIRLOCK - 400 SQ.	NO	1
248	ROTARY AIRLOCK - 500 SQ.	NO	1
249	ROTARY FEEDER WITH GEARED MOTOR	NO	1
250	ROTOR ASSEMBLY - CLASSIFIER	NO	1
251	ROTOR BLADE	NO	28
252	RUBBER PLUG FOR CEMENT MILL SHELL	NOS	1600
253	SCRAPPERS - EXETRNL (SPRUNG BLADE TYPE)	NO	1
254	SCRAPPERS - EXETRNL (SPRUNG BLADE TYPE)	NO	1
255	SCRAPPERS - INTERNAL (V - PLOUGH TYPE)	NO	1
256	SCRAPPERS - INTERNAL (V - PLOUGH TYPE)	NO	1
257	SCREW COMPRESSOR - 660 m3/ hr	NO	1
258	SCREW CONVEYORS	NO	1
259	SCREW CONVEYORS	NO	1
260	SCREW SAMPLER - 300 x 300 mm	NO	1
261	SCREW TAKE UP	NO	1
262	SEALANT	NO	1
263	SEALING ARRANGEMENT - CLASSIFIER	NO	1
264	SELF ALIGNING CARRYING IDLERS	NOS	6
265	SELF ALIGNING CARRYING IDLERS	NOS	3
266	SELF ALIGNING RETURN IDLERS	NOS	2
267	SELF ALIGNING RETURN IDLERS	NO	1

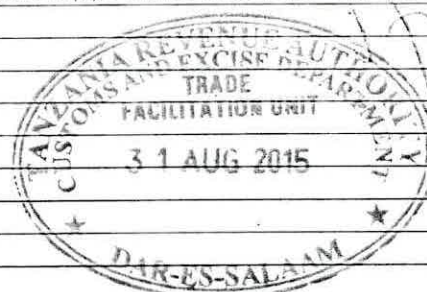


268	SEQUENTIAL TIMER CONTROLLER - 532 BF1	NO	1
269	SEQUENTIAL TIMER CONTROLLER - 562 BF1	NO	1
270	SEQUENTIAL TIMER CONTROLLER - 562 BF2	NO	1
271	SEQUENTIAL TIMER CONTROLLER - 562 BF3	NO	1
272	SEQUENTIAL TIMER CONTROLLER - 592 BF1	NO	1
273	SEQUENTIAL TIMER CONTROLLER - 592 BF2	NO	1
274	SEQUENTIAL TIMER CONTROLLER - 612 BF1	NO	1
275	SEQUENTIAL TIMER CONTROLLER - 662 BF1	NO	1
276	SHUT-OFF DAMPER - HAG CUT-OFF	NO	1
277	SHUT-OFF GATE - MANUAL	NO	1
278	SLEEVE FOR HELICAL GIRTH GEAR	NOS	4
279	SLIDE GATE	NOS	2
280	SLIDE GATE - 2 NOS	NO	2
281	SLIDE GATE - PNEUMATIC	NO	1
282	SLIDE GATE - PNEUMATIC	NO	1
283	SLIDE GATE 2 NOS. BELOW SILOS	NOS	2
284	SLIDE GATE FOR CLASSIFIER BOTTOM	NO	1
285	SLIDE GATES - MANUAL	NOS	4
286	SLIDE GATES - PNEUMATIC	NOS	4
287	SNUB PULLEY	NOS	1
288	SNUB PULLEY	NO	1
289	SOLE PLATES FOR COUNTERSHAFT ASSEMBLY	NOS	2
290	SPECIAL STUD FOR HELICAL GIRTH GEAR	NOS	8
291	STRINGER AND SHORT SUPPORT	NO	1
292	STRINGER AND SHORT SUPPORT	NO	1
293	STUFFING BOX ASSEMBLY	NOS	2
294	SUPPORT RINGS & TIE RODS - CLASSIFIER	NO	1
295	TAIL / TAKE UP PULLEY	NOS	2
296	TAIL / TAKE UP PULLEY	NO	1
297	TAIL FRAME	NO	1
298	TAIL FRAME	NO	1
299	TAPER STUD FOR HELICAL GIRTH GEAR	NOS	4
300	TRANSITION IDLERS	NOS	6
301	TRANSITION IDLERS	NOS	6
302	TRUCK LOADERS	NOS	2
303	UPPER CASING - CLASSIFIER	NO	1
304	VERTICAL GRAVITY TAKE UP	NO	1
305	VIBRATING SCREEN	NO	1
306	WASHER FOR HELICAL GIRTH GEAR	NOS	24
307	WATER SPRAY SYSTEM - 25 LPM	NO	1
308	WEAR RESIST CERAMIC TILES FOR CYCLONE	NO	1
309	ZERO SPEED SWITCH	NO	1
310	ZERO SPEED SWITCH	NO	1

Billing Schedule for Electrical and Instruments Components

S.No.	Equipment Description	Unit	Qty
1	11KV VCB PANELS AT CEMENT MILL LOAD CENTRE Copper Bus	NOS	7
a.	1250A VCB INCOMING WITH LINE PT	NO	1
b.	1250A VCB TO 6.6/433V, 1600KVA DIST.TRAFO	NO	1
c.	1250A VCB TO 6.6/690V, 900KVA CON.DUTY TRAFO FOR CIRCULATING FAN	NO	1
d.	1250A VCB TO CEMENT MILL MOTOR	NO	1
e.	1250A VCB TO SPARE MOTOR FEEDER	NO	1
f.	EARTHING TRUCK 1250A	NO	1
g.	EARTHING TRUCK FOR CABLE 1250A	NO	1

	Liquid Rotor Resistance Starter for MV SLIP RING Motor	No	1
a.	CEMENT MILL MAIN DRIVE 2700KW MOTOR	No	1
		No	
6	MV Capacitor Bank for 11KV Motor (964KVAR at 11KV)	No	1
a.	2700KW CEMENT MILL MOTOR - WITH 6% REACTOR	No	1
7	LV 690V VVVF Drives	Nos	1
a.	CEMENT MILL CIRCULATING FAN 400KW 562FN3	No	1
9	415V VFD DRIVES	Nos	1
a.	CLASSIFER 90KW 562SR1	No	1
b.	Bag filter fan 55KW 562FN4	No	1
c.	Mill vent fan 55KW 562 FN1	No	1
10	110V DC Battery and Battery charger		
a.	110V,200AH BATTERY CHARGER & DCDB at CEMENT MILL LOADCENTRE	No.	1
b.	BATTERY 200 AH ,VRLA, SMF	No.	1
11	415V 3ph +N Bus duct with Al. bus bar		
a.	2500A BUS DUCT AT CEMENT MILL SECTION	Mtrs	10
12	PCC PANELS	No	1
a.	PCC panel with Al. bus bar of 3500 A ACB incomer with out going feeders for Cement mill section		
13	MCC's with Al.bus bar of Double front and Conventional Fixed (Non Drawout)Type		
	MCC 1 for Cement grinding	No	1
	MCC 2 for Packing Plant	No	1
15	LT APFC Panel (with75KVAR banks) 600KVAR	No	1
16	Plant earthing system		
	1C X 16 Sq.mm PVC unarmoured Copper Cable 660/110 V Grade	Mts	120
	Air termination road, 15mm dia 3 Meter long with mounting stand & copper spike (Lightning spike)	No	1
	Body & Lightning earth pit 3 Meter long 50mm dia 3 mm thick GI pipe	No	10
	Copper Flat	Mts	60
	Eopxy support insulator	Nos	1
	GI Flat 25 x 3 MM	Mts	600
	GI Flat 50 x 6 MM	Mts	1500
	GI Flat 75 x 10 MM	Mts	300
	GI wire 8 SWG	Mts	1000
	Instrument & Neutral earth pit 3 Meter long 50mm dia 3mm thick GI pipe with 600x600x3.15 Cu. Plate	No	4
18	LT Power Cables Copper XLPE Armoured		
	3.5CX150 SQ.MM	Mts	250
	3.5CX240 SQ.MM	Mts	300
	3.5CX95 SQ.MM	Mts	350
	3CX 2.5 SQ.MM	Mts	7500
	3CX10 SQ.MM	Mts	800
	3CX16 SQ.MM	Mts	200
	3CX240 SQ.MM	Mts	650
	3CX25 SQ.MM	Mts	400



3CX4 SQ.MM	Mts	3000
3CX50 SQ.MM	Mts	500
3CX6 SQ.MM	Mts	1000
3CX95 SQ.MM	Mts	350
LT Control Cables Copper Armoured		
12C X 1.5 Sq.mm	Mts	3500
19C X 1.5 Sq.mm	Mts	994
24C X 1.5 Sq.mm	Mts	800
37C X 1.5 Sq.mm	Mts	1487
3C X 1.5 Sq.mm	Mts	2465
4C X 2.5 Sq.mm	Mts	800
5C X 1.5 Sq.mm	Mts	4000
7C X 1.5 Sq.mm	Mts	1500
LT Signal Cables Copper Armoured		
10P x 1.0 Sq.mm	Mts	750
10T X 1.5 SQ.MM	Mts	750
1C X 16 Sq.mm	Mts	300
1C X 35 Sq.mm	Mts	300
1P x 1.0 Sq.mm	Mts	1000
1T X 1.5 SQ.MM	Mts	693
2P x 1.0 Sq.mm	Mts	500
4P x 1.0 Sq.mm	Mts	500
4T X 1.5 SQ.MM	Mts	500
19 HT Cable joint kits for 11kv cables	Nos	20
20 LT Cable glands		
CBW01	Nos	970
CBW011	Nos	20
CBW015	Nos	280
CBW015S	Nos	105
CBW02	Nos	32
CBW02A	Nos	250
CBW03	Nos	74
CBW04A	Nos	20
CBW05	Nos	202
CBW06	Nos	30
CBW07	Nos	10
CBW08	Nos	10
CBW09	Nos	6
ELECTRICAL TERMINAL CONNECTOR (LUGS)		
CCPI-17	Nos	13000
CCPI18	Nos	200
CCUS05	Nos	460
CCUS06	Nos	160
CCUS07	Nos	60
CCUS08	Nos	50
CCUS09	Nos	30
CCUS10	Nos	30
CCUS15	Nos	50
CCUS17	Nos	10
CCUS20	Nos	60
CCUS23	Nos	30
CCUS26	Nos	20
CCUS30	Nos	100



	CRSI-7067	Nos	200
21	GI Cable tray from 100mm to 600mm wide size with required hardwares		
	100 X 50 X 2 mm	Mts	400
	200 X 50 X 2 mm	Mts	400
	300 X 50 X 2 mm	Mts	400
	450 X 100 X 2.5 mm	Mts	500
	50 X 25 X 2 mm	Mts	300
	600 x 100 x 2.5 mm	Mts	700
22	LOCAL PUSHBUTTON STATION WITH START/STOP PB		
	LPB FOR DOL WITH START / STOP PB	Nos	76
	LPB FOR DOL WITH FORWARD START / REVER START / STOP PB	Nos	15
23	LIGHTING & Lighting FIXURES		
	Fluorescent lamps - CRCA stove enamelled white housing with ribbed mate finish aluminium louvers(230V AC) wi	Nos	5
	Industrial Fluorescent channel with stove enamelled reglector for 2 X 26W fluorescent lamps (WCF 26236)	Nos	30
	Industrial fluorescent channel with stove enamelled reglector suitable for 2X26W fluorescent lamps with battery backup (WCF 26236)	Nos	5
	IP65 Integral flood light with asymmetric beam reflector suitable for 1 X 250W HPSV (T) lamp (220V) (WFT 52250)	Nos	10
	IP65 Integral well glass luminaire suitable for 2X18 W CFL (TC-D) lamp (WWP62218)	Nos	190
	IP65 Pot optics silversied finsh street light suitable for 1X250 W HPSV (T) lamp (WST 25250)	Nos	5
	Surface / Recess mounted mirror optic luminaire suitable for 2X26W FTL (T8) lamp (WCF81236)	Nos	15
24	HARDWARES GI bolt nut and anchor fasters		
	1" Electrical conduit pipe (10 feet each length)	Nos	30
	50" PVC flexible conduit pipe for Proximity sensor	Nos	50
	Cadmium coated Flat Washer 10mm	Nos	1200
	Cadmium coated Flat Washer 12mm	Nos	1200
	Cadmium coated Flat Washer 6mm	Nos	1600
	Cadmium coated Flat Washer 8mm	Nos	1600
	Cadmium coated Spring Washer 10mm	Nos	600
	Cadmium coated Spring Washer 12mm	Nos	600
	Cadmium coated Spring Washer 6mm	Nos	800
	Cadmium coated Spring Washer 8mm	Nos	800
	Hexoganal Head bolt & Nut (Cadmium coated) 10 x 30 mm	Nos	600
	Hexoganal Head bolt & Nut (Cadmium coated) 12 x 50 mm	Nos	600
	Hexoganal Head bolt & Nut (Cadmium coated) 6 x 30 mm	Nos	800
	Hexoganal Head bolt & Nut (Cadmium coated) 8 x 30 mm	Nos	800
	Metallic Anchor Fastener 10 x 100 mm	Nos	400
	Metallic Anchor Fastener 12 x 100 mm	Nos	400
25	SUB LIGHTING DISTIRUBTION BOARD ETC. (12Hr/24Hrs)	Nos	10
26	MAIN LIGHTING DISTRIBUTION BOARD & MPDB	No	2
27	230V PLUG & SOCKET	Nos	20
28	MISC. ITEMS	Lot	1
29	3 PH PLUG & SOCKET	Nos	10



30	RUBBER MAT		
	2mm x 1mm x 2mm Thickness	Nos	36
	2mm x 1mm x 2.5mm Thickness	Nos	4
31	LT MOTORS LOT 2		
	532FN1, 22KW, Dedusting fan	Nos	1
	562BE1,37KW,Bucket elevator	Nos	1
	562BL1,11KW,Fluidizing Blower	Nos	1
	562CM1A,45KW,Cement Mill Aux.drive	Nos	1
	562FA1,9.3KW, Airslide blower	Nos	1
	562FA2,9.3KW, Airslide blower	Nos	1
	562FA3,9.3KW, Airslide blower	Nos	1
	562FN2,18.5KW, Dedusting fan	Nos	1
	592BL1,37KW, Roots Blower	Nos	1
	592BL2,37KW, Roots Blower	Nos	1
	592FA1,7.5KW, Airslide blower	Nos	1
	592FA2,7.5KW, Airslide blower	Nos	1
	592FA3,7.5KW, Airslide blower	Nos	1
	592FA4,7.5KW, Airslide blower	Nos	1
	592FA5,7.5KW, Airslide blower	Nos	1
	592FN1, 18.5KW,Dedusting Fan	Nos	1
	612BE1,18.5KW,Bucket elevator	Nos	1
	612FA1,7.5KW, Airslide blower	Nos	1
	612FA2,7.5KW, Airslide blower	Nos	1
	612FA3,7.5KW, Airslide blower	Nos	1
	662FN1, 37KW Dedusting fan	Nos	1
1	PRESSURE SWITCH	Nos	12
2	DIFF. PRESSURE SWITCH	Nos	12
3	PRESSURE TRANSMITTER	Nos	10
4	DIFF. PRESSURE TRANSMITTER	Nos	2
5	RTD & THERMO COUPLE	Nos	11
6	TEMP.TRANSMITTER	Nos	10
7	LEVEL SWITCH	Nos	7
8	ZSS	Nos	20
9	VIBRATION TRANSMITTER	Nos	6
10	RADAR LEVEL TRANSMITTER	Nos	2
11	OPACITY MONITOR	No	1
12	PLC SYSTEM WITH COMMUNICATION CABLES	SET	1
13	UPS 10KVA FOR CCR	SET	1
14	UPS DBS	No	1

15	JUNCTION BOXES		
	10 Terminal blocks	Nos	25
	100 Terminal blocks	Nos	4
	25 Terminal blocks	Nos	12
	5 Terminal blocks	Nos	40
	50 Terminal blocks	Nos	8
16	HOOPER	Nos	5
17	HOOKUP MATERIAL		
	1/2" NPT(M)X12MM OD SS STRAIGHT CONNECTOR TO ASTM A269 TP 304	Nos	38
	1 1/2" NPT (M) PLUG	Nos	14
	1 1/2"X1/2" REDUCING TEE NPT (F) astm A105	Nos	14
	1/2" NB 3000# FCS SW EQUAL TEE TO ASTM A105 GRADE 2	Nos	24
	1/2" NB S/40 SMLS C.S PIPE TO ASTM A106 GRADE B	Meter	396
	1/2" NPT (F) EQUAL TEE	Nos	14
	1/2" NPT (F)3000# FCS SCWD UNION TO ASTM A105 GRADE 2	Nos	84
	1/2" NPT (M) PLUG	Nos	14
	1/2"NB 3000# FCS SW COUPLING TO ASTM A105 GRADE 2	Nos	14
	1/2"NB 3000# FCS SW HALF COUPLING TO ASTM A105 GRADE 2	Nos	36
	1/2"NB 3000# FCS SW UNION TO ASTM A105 GRADE 2	Nos	42
	1/2"NB 800# FCS SW BALL VALVE TO ASTM A105 GRADE 2 WITH SS304 TRIM	Nos	74
	1/2"NBX4" LONG S/40 NPT (M) TH X TH PIPE NIPPLE TO ASTM A106 GRADE B	Nos	60
	1/2"NBX4" LONG S/40 NPT (M) TH X TH PIPE NIPPLE TO ASTM A106 GRADE B	Nos	116
	1 1/2" ANSI 150# C.S Flange with Gaskets bolts and nuts	Nos	11
	1 1/2" NB X 0.5 MM LONG S/40 NPT(M)TH XPL PIPE TO ASTM A10	Nos	7
	1 1/2" NB X 0.5 MM LONG S/40 NPT(M)TH XPL PIPE TO ASTM A106 GRADE B	Nos	39
	1 1/2" NB X 0.5 MM LONG S/40 NPT(M)TH XPL PIPE TO ASTM A106 GRADE B	Nos	11
	1 1/2" NPT (F) CAP TO ASTM A105 GRADE 2	Nos	25
	12MM ODX1.24MM THK SS TUBE TO ASTM A269 TP 304	Meter	14
	DUST POT 4" MS PIPE 1/2" LONG WITH 1/2" SW AT SIDE INLET AND 1/2" NPT(F)AT TOP AND BOTTOM WITH 1/2"	Nos	14

31 AUG 2018

Approved
[Signature]



TANZANIA REVENUE AUTHORITY

TRA/CE/C/P.20/08/4992

Managing Director,
Amsons Industries (T) Ltd,
P.O. BOX 5950,
DAR ES SALAAM.

04th June, 2015



**RE: DUTY /VAT EXMPTION ON CAPITAL/DEEMED CAPITAL GOODS-
CERTIFICATE OF INCENTIVES NO.042483-OF 27.06.2013
TIN: 119-104-459**

042454 OF
19.06.2013

We are writing in response to your letter Ref.AICC/TRC/APP/02/03/2015 of 23rd March, 2015 as supported by the letter Ref. TICC/PP.10/042454/11 of 31st March, 2015, from Tanzania Investment Centre regarding the captioned subject.

We hereby approve and confirm items as per three-page list herewith attached as capital/deemed capital goods for establishment of your project with certificate of incentives mentioned above. Please take note that age of the approved motor vehicles at the time of importation should be within the limit specified in the law.

The approved deemed capital goods will be exempted from Import Duty to the tune of 90% of Import Duty payable and VAT relieved to the tune of 45% of VAT payable. Please complete VAT form 224 and submit the same for approval to the Commissioner for Domestic Revenue for local purchases and for imported goods to the Commissioner for Customs and Excise.

Sincerely yours,

Narcis Lumumba

For: COMMISSIONER FOR CUSTOMS AND EXCISE.

NK/
C.C: Manager Tax Exemption,
C.C: Manager- TRA Temeke,
C.C: Executive Director,
Tanzania Investment Centre,
DSM.

ISO 9001:2008 Certified

CUSTOMS & EXCISE DEPARTMENT

Sokoine Drive, P.O. Box 9053, Dar es Salaam, Tanzania
Tel: 255-22-2117765 or 255-22-2127783/4/6/8 Fax: 255-22-2138878/2135193

AMSONS INDUSTRIES (T) LTD
CEMENT PLANT-EQUIPMENT DESCRIPTION

1 Cement mill	Equipments	NMB	5
2 Grinding Machine	Equipments	NMB	4
3 Dedusting Bag Filter Fan	Equipments	NMB	50
4 Rotary Airlock	Equipments	NMB	34
5 Belt Conveyor with supporting Accessories System	Equipments	NMB	200
6 Galleries, Trestles, Walk ways, Gantries Roofing supporting structure	Equipments	NMB	50
7 Manual Slide Gates	Equipments	NMB	20
8 Jaw Crusher with Accessories	Equipments	NMB	5
9 Motors	Equipments	NMB	250
10 Mill Shell-BQ plate 40mm	Equipments	NMB	13
11 Shell A 16mm	Equipments	NMB	21
12 Shell B 14mm	Equipments	NMB	30
13 Shell C 12mm	Equipments	NMB	30
14 Shell D 10mm	Equipments	NMB	50
15 Shell E 8mm	Equipments	NMB	50
16 Shell I 6mm	Equipments	NMB	30
17 Shell II 10mm	Equipments	NMB	80
18 Ms Annual Plate 14mm	Equipments	NMB	30
19 Ms Annual Plate 12mm	Equipments	NMB	40
20 Feed and discharge ends	Equipments	NMB	13
21 Main Bearing	Equipments	NMB	13
22 Girth Gear with Guard	Equipments	NMB	13
23 Pinion and counter shaft assembly and bearings	Equipments	NMB	13
24 Feed head liners	Equipments	NMB	13
25 Shell liners(Lifting and classifying)-Hi Chrome	Equipments	NMB	13
26 Partition (Flow control type) and discharge diaphragms	Equipments	NMB	13
27 Inlet and Outlet chute with Liners	Equipments	NMB	13
28 Discharge Housing	Equipments	NMB	13
29 Torque tube with coupling	Equipments	NMB	13
30 Nib Trap Screen	Equipments	NMB	13
31 Lubrication systems	Equipments	NMB	28
32 Rails and Fixtures	Equipments	NMB	22
33 Electric hoist for grinding media loading	Equipments	NMB	13
34 Water spray system	Equipments	NMB	16
35 Day Tank	Equipments	NMB	13
36 Piping fro day tank to nozzle and back to nozzle	Equipments	KGM	200,000
37 Mill vent bag filter	Equipments	NMB	16
38 Insulation with cladding and fixing elements	Equipments	NMB	13
39 Hopper heater and level indicator	Equipments	NMB	13
40 Slide Gate	Equipments	NMB	19
41 Airslide	Equipments	NMB	400
42 Wire mesh in the material feed point	Equipments	NMB	49
43 Airslide blower	Equipments	NMB	80
44 Bucket elevator with accessories	Equipments	NMB	600
45 Switch	Equipments	NMB	250
46 Valves	Equipments	KGM	200,000
47 Assorted items related to Airslide	Equipments	NMB	300
48 RTD's for bearing with transmitters	Equipments	NMB	20
49 Dedusting Bag Filter	Equipments	NMB	250
50 Cyclone with accessories	Equipments	NMB	200
51 Automation system assorted items related to PLC system	Equipments	NMB	150



Approved
[Signature]

...to the Polyester Woven Fabric	Equipments	NMB	200
53 Circulating air fan	Equipments	NMB	50
54 Classifier vent bag filter	Equipments	NMB	150
55 Classifier vent bag filter fan	Equipments	NMB	50
56 Screw sampler	Equipments	NMB	20
57 Main oil tank with oil unloading system	Equipments	NMB	15
58 Oil pump	Equipments	NMB	30
59 Oil tank	Equipments	NMB	15
60 Generators	Equipments	NMB	150
61 Refractory with anchors	Equipments	NMB	20
62 Junction box	Equipments	NMB	200
63 Pneumatic slide gates	Equipments	NMB	40
64 Air piping with valves	Equipments	NMB	20
65 Cement silo	Equipments	NMB	20
66 Aeration system for cement silo	Equipments	NMB	20
67 Continuous level indicators	Equipments	NMB	20
68 Pressure equalizing valves	Equipments	NMB	50
69 Silo aeration blowers	Equipments	NMB	40
70 Flow control gate	Equipments	NMB	20
71 Belts	Equipments	NMB	300
72 Vibrating screen	Equipments	NMB	20
73 Surge bin	Equipments	NMB	20
74 Shut off gate manual	Equipments	NMB	20
75 Rotary feeder	Equipments	NMB	20
76 Packing machine with accessories	Equipments	NMB	350
77 Radial bag discharge conveyor	Equipments	NMB	20
78 Bag carrying conveyor	Equipments	NMB	20
79 Clinker hopper	Equipments	NMB	20
80 Gypsum hopper	Equipments	NMB	20
81 Limestone hopper	Equipments	NMB	20
82 needle gate for clinker	Equipments	NMB	20
83 needle gate for gypsum	Equipments	NMB	20
84 needle gate for limestone	Equipments	NMB	20
85 Clinker weigh feeder	Equipments	NMB	20
86 Gypsum weigh feeder	Equipments	NMB	20
87 Welding sets	Equipments	NMB	30
88 Trucks	Vehicle	NMB	12
89 Trucks horse	Vehicle	NMB	12
90 Trailers	Vehicle	NMB	12
91 Pick ups 1Ton	Vehicle	NMB	12
92 Pick ups 3-5 tons	Vehicle	NMB	12
93 Min-Bus	Vehicle	NMB	12
94 Crane trucks	Vehicle	NMB	12
95 Louvre damper	Vehicle	NMB	12
96 Concrete mixer trucks	Vehicle	NMB	12
97 Workshop tools sets	Equipments	NMB	50
98 Concrete product machines	Equipments	NMB	10
99 main gearbox with coupling	Equipments	NMB	13
100 EOT crane for ball mill drive maintenance	Equipments	NMB	13
101 Electronic ear	Equipments	NMB	10
102 Expansion joint at inlet and outlet, base frame, coupling, coupling guard, foundation bolt, RTD for bearings, vibration pads	Equipments	NMB	200
103 Mill discharge flap valve	Equipments	NMB	15
104 Electric hoist for bucket elevator maintenance	Equipments	NMB	20

12
12
12
12
12

12



Approved
[Signature]

105 Flap valve for bucket elevator discharge	Equipments	NMB	20
106 Electric Hoist for classifier	Equipments	NMB	20
107 Classifier	Equipments	NMB	13
108 Gear box with couplings	Equipments	NMB	50
109 Classifier fluidisation blower	Equipments	NMB	13
110 Slide Gate for classifier bottom	Equipments	NMB	13
111 Reject cone valve	Equipments	NMB	13
112 Ceramic liner	Equipments	NMB	200
113 Classifier vent bag filter	Equipments	NMB	20
114 Electric Hoist for Ca fan maintenance	Equipments	NMB	20
115 Fresh air dumper	Equipments	NMB	13
116 Butterfly damper at bag filter fan inlet, manual	Equipments	NMB	20
117 Combustion air fan	Equipments	NMB	20
118 Emergency cooling air fan	Equipments	NMB	20
119 Dilution air fan	Equipments	NMB	20
120 Fresh air damper with actuator	Equipments	NMB	20
121 Shut off damper with actuator	Equipments	NMB	20
122 Electric hoist for bucket maintenance	Equipments	NMB	20
123 Bag filter	Equipments	NMB	100
124 Bag filter fan	Equipments	NMB	16
125 Butterfly damper at bag filter fan inlet manual	Equipments	NMB	20
126 Electric hoist for bucket elevator maintenance and for handling empty bags	Equipments	NMB	13
127 Steel hopper	Equipments	NMB	100
128 Load Cell for Bin	Equipments	NMB	80
129 High level indicator for surge bin	Equipments	NMB	20
130 The packer shall be complete with Electronic weigh system, Automatic zero adjustment, Broken bag recognition and Local control panel	Equipments	NMB	50
131 Compressor	Equipments	NMB	20
132 Screw compressor	Equipments	NMB	20
133 Copper Conductor	Equipments	MTRS	80000
134 Air receiver	Equipments	NMB	70
135 Metal detector in mill feed belt conveyor	Equipments	NMB	20
136 Truck Loaders	Vehicle	NMB	20
137 Air receiver	Equipments	NMB	100
138 Air drier	Equipments	NMB	100
139 Air compressor	Equipments	NMB	20
140 Refrigerant type	Equipments	NMB	50
141 Grinding Media 80 mm	Equipments	KGM	600000
142 Grinding Media 70 mm	Equipments	KGM	500000
143 Grinding Media 60 mm	Equipments	KGM	400000
144 Grinding Media 40 mm	Equipments	KGM	400000
145 Grinding Media 30 mm	Equipments	KGM	400000
146 Grinding Media 25 mm	Equipments	KGM	300000
147 Grinding Media 20 mm	Equipments	KGM	200000
148 Grinding Media 17 mm	Equipments	KGM	300000
149 Grinding Media 10 mm	Equipments	KGM	100000
150 Grinding Media 5 mm	Equipments	KGM	100000



Approved



ASSESSMENT DOCUMENT

2. Exporter/Consigner Name & Address FGKUS ENTERPRISES 186/187 P.H. ROAD ALSA TOWERS, BASEMENT 11 KILPAUK, CHENAI-600 010 TAMILNADU, INDIA		TIN:	1. Declaration Type IM4	A. Processing/Clearing office TZDL DAR CUSTOMS SERVICE CENTRE		TANSAD Number & Date TZDL-15-1069507 06/03/2015	
			3. No Items 2	4. CL. Plan PAD	5. Security Account No.		Receipt Number & Date
			6. Country Last Consignment CN China		7. Trading Country CN China		8. Country of Export CN China
9. Importer/Consignee Name & Address AMSONS INDUSTRIES (T) LIMITED P.O. BOX 22786 DAR ES SALAAM		TIN: 119-104-459	10. Country of Destination TZ United Republic of		11. Delivery Term Code CIF		Place Dar es Salaam
			12. Nat of Trans 1 9		13. Exchange Rate 1,790.32		14. Currency USD
			Total Invoice Value 28,800.00		15. Invoice No. & Date 027/2014-15		12/02/2015
			16. Valuation Note		Freight Charges 1,800.00		Currency USD
			Other charges		Insurance 30.00		Currency USD
17. Declarant/Agent Name & Address Tanga Modern C & F. Co. Ltd P. O. Box 85 Tanga		TIN: 100-626-608	18. No Pckgs 24 (PK)		19. Gross Weight 24,100 (Kgs)		20. Net Weight 24,100 (Kgs)
			21. Entry/Exit Office TZDW		22. Loc. Of Goods		23. AWB/BL/RCN/Shipping Order 142500173984
Ref.No. & Date 100626608-15-9900448 06/03/2015							

Result of Valuation :

State	Currency	TOTAL FOB	Freight	Insurance	Othe charges	Deductions	Total Customs Value
Declared	TZS	34,390,256.88	3,222,576.00	53,709.60			37,666,542.48
Assessed	TZS	51,561,216.00	3,222,576.00	53,709.60			54,837,501.60

Item No.	24. Description	25. H.S. Code	26. Value for Customs	27. FOB Value		
1	Grinding balls and similar articles for mills HYPER STEEL/LOW CHROME GRINDING MEDIA BALL(DIA:90MM MODEL ZDCr1.5	D 7326.11.00.0000	27,117,988.92	34,390,256.88		
		A 7326.11.00.0000	38,843,230.30	51,561,216.00		
No	28. Model, Specification	Component	Quantity	Unit Price	Item invoice Price	
1	HYPER STEEL/LOW CHROME GRINDING MEDIA BALL(DIA:90MM MODEL ZDCr1.5	HYPER STEEL/LOW CHROME GRINDING MEDIA BALL(DIA:90MM MODEL ZDCr1.5(FOR CEMENT PLANT)	D	17,000	0.81	13,829.50
			A	17,000	1.20	20,400.00
			D			
			A			
			D			
			A			

Declaration by Importer/Importer's Agent
(Who must sign and stamp either of the declaration below)

TANZANIA REVENUE AUTHORITY
REPRESENTATIVE

I/We
the undersigned, being the Importer/Exporter/Agent*
do hereby declare that the information declared on
this entry is true and complete and accept fully the
conditions and requirements attached to the use of
CPC declared therein, and comply with the provision of
the Customs Management Act.

I/We
the undersigned, being the Importer/Exporter/Agent*
do hereby declare that the information declared on
this entry is true and complete and accept fully the
conditions and requirements attached to the use of
CPC declared therein, and comply with the provision of
the Customs Management Act.

Issued by TRA for importer's information on
TRA's assessment related to HS. Codes &
Customs Values

SIGNATURE

SIGNATURE, DATE AND STAMP

SIGNATURE, DATE AND STAMP

ASSESSMENT DOCUMENT

29. Taxes						
Tax Type	Duty / Tax Base	Rate	Amount	Relief Amount	Relief Code	MOP
IMP	38,843,230.30					1
VAT	38,843,230.30	18.00	6,991,782.00			1
CPF	36,522,528.00	0.60	219,136.00			1
Total taxes for item 1			7,210,918.00			
Item No.	24. Description	25. H.S. Code	26. Value for Customs	27. FOB Value		
2	Grinding balls and similar articles for mills					
	HYPER STEEL/LOW CHROME GRINDING MEDIA CYLPEBS (DIA:90MM MODEL ZDCr1.5	D	7326.11.00.0000	10,548,553.56	34,390,256.88	
		A	7326.11.00.0000	15,994,271.30	51,561,216.00	
No	28. Model, Specification	Component	Quantity	Unit Price	Item invoice Price	
1	HYPER STEEL/LOW CHROME GRINDING MEDIA CYLPEBS (DIA:90MM MODEL ZDCr1.5	HYPER STEEL/LOW CHROME GRINDING MEDIA CYLPEBS (DIA:90MM MODEL ZDCr1.5(FOR CEMENT PLANT)	D	7,000	0.77	5,379.50
			A	7,000	1.20	8,400.00
29. Taxes						
Tax Type	Duty / Tax Base	Rate	Amount	Relief Amount	Relief Code	MOP
IMP	15,994,271.30					1
VAT	15,994,271.30	18.00	2,878,969.00			1
CPF	15,038,688.00	0.60	90,233.00			1
Total taxes for item 2			2,969,202.00			

ASSESSMENT DOCUMENT

2. Exporter/Consigner Name & Address LNV TECHNOLOGY PRIVATE LIMITED 5TH FLOOR, SIGAPI ACHI BUILDING, NO. 18/3 RUKMANI LAKSHMIPATHY ROAD EGMORE CHENNAI - 600 008, INDIA	TIN:	1. Declaration Type IM4	A. Processing/Clearing office TZDL DAR CUSTOMS SERVICE CENTRE	TANSAD Number & Date TZDL-15-1337497 15/10/2015		
	9. Importer/Consignee Name & Address AMSONS INDUSTRIES (T) LIMITED P.O. BOX 22786 DAR ES SALAAM	3. No Items 1	4. CL. Plan PAD	5. Security Account No.	Receipt Number & Date	
		6. Country Last Consignment IN India		7. Trading Country IN India		8. Country of Export IN India
17. Declarant/Agent Name & Address Tanga Modern C & F. Co. Ltd P. O. Box 85 Tanga	TIN: 119-104-459	10. Country of Destination TZ United Republic of	11. Delivery Term Code CIF	Place Dar es Salaam	12. Nat of Trans 1 9	
	16. Valuation Note 100-626-608	13. Exchange Rate 2,176.42	14. Currency USD	Total Invoice Value 409,331.00	15. Invoice No. & Date LNV/369-AMS/15- 09/09/2015	
		Freight Charges 22,967.00		Currency USD	Insurance 22,514.00	Currency USD
18. No Pckgs 22 (PK)		19. Gross Weight 20,870 (Kgs)		20. Net Weight 12,070 (Kgs)		
Ref. No. & Date 100626608-15-9901260 15/10/2015		21. Entry/Exit Office TZDW	22. Loc. Of Goods		23. AWB/BL/RCN/Shipping Order EPIRINDMAA109558	

Result of Valuation :

State	Currency	TOTAL FOB	Freight	Insurance	Othe charges	Deductions	Total Customs Value
Declared	TZS	890,876,175.02	49,985,838.14	48,999,919.88			989,861,933.04
Assessed	TZS	890,876,175.02	49,985,838.14	48,999,919.88			989,861,933.04

Item No.	24. Description	25. H.S. Code	26. Value for Customs	27. FOB Value	
1	Other machinery SUPPLY OF COMPLETE CEMENT GRINDING PLANT WITH ACCESSORIES(PARTIAL SHIPMENT FOR DESIGN,ENGINEERING O	D 8474.80.00.0000	989,861,933.04	890,876,175.02	
		A 8474.80.00.0000	989,861,933.04	890,876,175.02	
No	28. Model, Specification	Component	Quantity	Unit Price	Item invoice Price
1	SUPPLY OF COMPLETE CEMENT GRINDING PLANT WITH ACCESSORIES	FOR DESIGN,ENGINEERING,SUPLY OF PLANT MACHINERY FOR CLOSE CIRCUIT CEMENT GRINDING	D 1	409,331.00	409,331.00
			A 1	409,331.00	409,331.00
			D		
			A		
			D		
			A		

Declaration by Importer/Importer's Agent
(Who must sign and stamp either of the declaration below)

TANZANIA REVENUE AUTHORITY
REPRESENTATIVE

I/We the undersigned, being the Importer/Exporter/Agent* do hereby declare that the information declared on this entry is true and complete and accept fully the conditions and requirements attached to the use of CPC declared therein, and comply with the provision of the Customs Management Act.

I/We the undersigned, being the Importer/Exporter/Agent* do hereby declare that the information declared on this entry is true and complete and accept fully the conditions and requirements attached to the use of CPC declared therein, and comply with the provision of the Customs Management Act.

issued by TRA for importer's information on
TRA's assessment related to HS. Codes &
Customs Values

SIGNATURE

SIGNATURE, DATE AND STAMP

SIGNATURE, DATE AND STAMP



ASSESSMENT DOCUMENT

29. Taxes							
Tax Type	Duty / Tax Base	Rate	Amount	Relief Amount	Relief Code	MOP	
IMP	989,861,933.04					A	1
VAT	989,861,933.04			178,175,148.00		A	1
CPF	890,876,175.02	0.60	5,345,258.00				1
RDL	989,861,933.04	1.50	14,847,929.00				1
Total taxes for item 1			20,193,187.00				



ASSESSMENT DOCUMENT

2. Exporter/Consigner Name & Address VEGA INDUSTRIES MIDDLE EAST FZC P.O. BOX 4275 AJMAN, A1 304-306, 314 AJMAN FREE ZONE		TIN: 119-104-459	1. Declaration Type IM4	A. Processing/Clearing office TZDL DAR CUSTOMS SERVICE CENTRE		TANSAD Number & Date TZDL-16-1314876 03/11/2016		
			3. No Items 2	4. CL. Plan PMD	5. Security Account No.		Receipt Number & Date	
			6. Country Last Consignment AE United Arab Emirates		7. Trading Country AE United Arab Emirates		8. Country of Export AE United Arab Emirates	
9. Importer/Consignee Name & Address AMSONS INDUSTRIES (T) LIMITED 295/1-295/2 365/366 MANDELA ROAD-KURASINI		TIN: 119-104-459	10. Country of Destination TZ United Republic of		11. Delivery Term Code CIF		12. Nat of Trans 1 9	
			13. Exchange Rate 2,185.94		14. Currency USD		Total Invoice Value 143,230.00	
			15. Invoice No. & Date 43516563 07/10/2016		16. Valuation Note		17. Freight Charges 2,400.00	
			18. Currency USD		19. Insurance 510.00		20. Currency USD	
17. Declarant/Agent Name & Address TANGA MODERN CLEARING AND FORWARDIN 44 BLOCK 1 MARKET STREET P. O. BOX 85 Tanga Tanga		TIN: 100-626-608	21. Entry/Exit Office TZDW		22. Loc. Of Goods WITZDL032		23. AWB/BL/RCN/Shipping Order 958027262	
Ref.No. & Date 100626608-16-9900478 03/11/2016			18. No Pckgs 64 (BX)		19. Gross Weight 62,903.1 (Kgs)		20. Net Weight 62,903.1 (Kgs)	

Result of Valuation :

State	Currency	TOTAL FOB	Freight	Insurance	Othe charges	Deductions	Total Customs Value
Declared	TZS	313,092,186.20	5,246,256.00	1,114,829.40			319,453,271.60
Assessed	TZS	313,092,186.20	5,246,256.00	1,114,829.40			319,453,271.60

Item No.	24. Description	25. H.S. Code	26. Value for Customs	27. FOB Value
1	Other machinery ACCESSORIES FOR BALL CEMENT LINING MILL	D 8474.80.00.0000	37,090,748.49	313,092,186.20
		A 8474.80.00.0000	37,090,748.49	313,092,186.20

No	28. Model, Specification	Component	Quantity	Unit Price	Item invoice Price	
1	Feed Head Liners Complete Set with Accessories as per vega Design including MS Structure	ACCESSORIES FOR BALL CEMENT LINING MILL	D	20	331.50	6,630.00
			A	20	331.50	6,630.00
2	Mill Shell Liners complete with Hardware and Backing Material for Head and shell liners	ACCESSORIES FOR BALL CEMENT LINING MILL	D	1	10,000.00	10,000.00
			A	1	10,000.00	10,000.00
			D			
			A			

Declaration by Importer/Importer's Agent
(Who must sign and stamp either of the declaration below)

TANZANIA REVENUE AUTHORITY
REPRESENTATIVE

I/We the undersigned, being the Importer/Exporter/Agent* do hereby declare that the information declared on this entry is true and complete and accept fully the conditions and requirements attached to the use of CPC declared therein, and comply with the provision of the Customs Management Act.

I/We the undersigned, being the Importer/Exporter/Agent* do hereby declare that the information declared on this entry is true and complete and accept fully the conditions and requirements attached to the use of CPC declared therein, and comply with the provision of the Customs Management Act.

issued by TRA for importer's information on
TRA's assessment related to HS. Codes &
Customs Values

SIGNATURE

SIGNATURE, DATE AND STAMP

SIGNATURE, DATE AND STAMP

ASSESSMENT DOCUMENT

29. Taxes						
Tax Type	Duty / Tax Base	Rate	Amount	Relief Amount	Relief Code	MOP
IMP	37,090,748.49					1
CPF	36,352,182.20	0.60	218,114.00			1
RDL	37,090,748.49	1.50	556,362.00			1
VAT	37,865,224.49	18.00	6,815,741.00			1
Total taxes for item 1			7,590,217.00			
Item No.	24. Description	25. H.S. Code	26. Value for Customs	27. FOB Value		
2	Other machinery	D 8474.80.00.0000	282,362,523.11	313,092,186.20		
	ACCESSORIES FOR BALL CEMENT LINING MILL	A 8474.80.00.0000	282,362,523.11	313,092,186.20		
No	28. Model, Specification	Component	Quantity	Unit Price	Item invoice Price	
1	Level Control Intermediate Middle Diaphragm Comprising Complete with Accessorise and fittings:(frame Structure, Grate Plate and black Slide Gate Outlet	ACCESSORIES AND FITTING FOR CEMENT LINING MILL SYSTEM	D	1	51,840.00	51,840.00
			A	1	51,840.00	51,840.00
2	Step and Wave shell liners for 1st chamber Complete with Accessories Classifying Shell Liners of 2nd Chamber Complete with Accessories and	ACCESSORIES AND FITTING FOR CEMENT LINING MILL SYSTEM	D	1	74,760.00	74,760.00
			A	1	74,760.00	74,760.00
29. Taxes						
Tax Type	Duty / Tax Base	Rate	Amount	Relief Amount	Relief Code	MOP
IMP	282,362,523.11					1
CPF	276,740,004.00	0.60	1,660,441.00			1
RDL	282,362,523.11	1.50	4,235,438.00			1
VAT	282,362,523.11			51,886,513.00	A	1
Total taxes for item 2			5,895,879.00			

ASSESSMENT DOCUMENT

2. Exporter/Consigner Name & Address BUHLER AG CH-9240 UZWII-SWITZERLAND		TIN:	1. Declaration Type IM4	A. Processing/Clearing office TZDL DAR CUSTOMS SERVICE CENTRE	TANSAD Number & Date TZDL-17-1167273 20/06/2017	
			3. No Items 1	4. Cl. Plan PMD	5. Security Account No.	
			6. Country Last Consignment CH Switzerland		7. Trading Country CH Switzerland	8. Country of Export CH Switzerland
9. Importer/Consignee Name & Address AMSONS INDUSTRIES (T) LIMITED 295/1-295/2 365/366 MANDELA ROAD KURASINI		TIN: 119-104-459	10. Country of Destination TZ United Republic of	11. Delivery Term Code CIF	Place Dar es Salaam	12. Nat of Trans 1 9
			13. Exchange Rate 2,241.75	14. Currency USD	Total Invoice Value 68,320.00	15. Invoice No. & Date 7018070564 04/04/2017
			16. Valuation Note		Freight Charges 3,040.20	Currency USD
			Other charges		Currency	Insurance 1,070.40
			Deductions		Currency	
17. Declarant/Agent Name & Address TANGA MODERN CLEARING AND FORWARDIN 44 BLOCK 1 MARKET STREET P. O. BOX 85 Tanga Tanga		TIN: 100-626-608	18. No Pckgs 7 (PK)	19. Gross Weight 9,175 (Kgs)	20. Net Weight 9,175 (Kgs)	
			21. Entry/Exit Office TZDW	22. Loc. Of Goods WITZDL035	23. AWB/BL/RCN/Shipping Order COSU6150534730	
Date 100626608-17-9900142 20/06/2017						

Result of Valuation :

State	Currency	TOTAL FOB	Freight	Insurance	Othe charges	Deductions	Total Customs Value
Declared	TZS	153,156,360.00	6,815,368.35	2,399,569.20			162,371,297.55
Assessed	TZS	153,156,360.00	6,815,368.35	2,399,569.20			162,371,297.55

Item No.	24. Description	25. H.S. Code	26. Value for Customs	27. FOB Value
1	Other: Other lifting, handling, loading or unloading: Other continuous-action elevators and CONVEYING ELEMENTS FOR WHEAT MILLING PLANT (PART SHIPMENT)	D 8428.39.00.0000	162,371,297.55	153,156,360.00
		A 8428.39.00.0000	162,371,297.55	153,156,360.00

No	28. Model, Specification	Component	Quantity	Unit Price	Item invoice Price
1	CONVEYOR ELEMENTS FOR WHEAT MILLING PLANT	CHAIN CONVEYOR FOR BRIDGE MODEL AKHG-100	D 1	68,320.00	68,320.00
			A 1	68,320.00	68,320.00
			D		
			A		
			D		
			A		

Declaration by Importer/Importer's Agent
(Who must sign and stamp either of the declaration below)

TANZANIA REVENUE AUTHORITY
REPRESENTATIVE

I/We the undersigned, being the Importer/Exporter/Agent* do hereby declare that the information declared on this entry is true and complete and accept fully the conditions and requirements attached to the use of CPC declared therein, and comply with the provision of the Customs Management Act.

I/We the undersigned, being the Importer/Exporter/Agent* do hereby declare that the information declared on this entry is true and complete and accept fully the conditions and requirements attached to the use of CPC declared therein, and comply with the provision of the Customs Management Act.

issued by TRA for importer's information on
TRA's assessment related to HS. Codes &
Customs Values

SIGNATURE

SIGNATURE, DATE AND STAMP

SIGNATURE, DATE AND STAMP

ASSESSMENT DOCUMENT

29. Taxes						
Tax Type	Duty / Tax Base	Rate	Amount	Relief Amount	Relief Code	MOP
IMP	162,371,297.55					1
CPF	153,156,360.00	0.60	918,939.00			1
RDL	162,371,297.55	1.50	2,435,570.00			1
VAT	162,371,297.55			29,830,646.00	A	1
Total taxes for item 1			3,354,509.00			

ASSESSMENT DOCUMENT

2. Exporter/Consigner Name & Address BUHLER AG CH9240 UZWII/SWITZERLAND	TIN: 	1. Declaration Type IM4	A. Processing/Clearing office TZDL DAR CUSTOMS SERVICE CENTRE		TANSAD Number & Date TZDL-17-1171300 23/06/2017		
		3. No Items 1	4. CL. Plan PAD	5. Security Account No.		Receipt Number & Date	
		6. Country Last Consignment CH Switzerland		7. Trading Country CH Switzerland		8. Country of Export CN China	
9. Importer/Consignee Name & Address AMSONS INDUSTRIES (T) LIMITED 295/1-295/2 365/366 MANDELA ROAD KURASINI	TIN: 119-104-459	10. Country of Destination TZ United Republic of	11. Delivery Term Code CIF	Place Dar es Salaam		12. Nat of Trans 1 9	
		13. Exchange Rate 2,241.61	14. Currency USD	Total Invoice Value 40,103.00	15. Invoice No. & Date 7018070565 04/04/2017		
		16. Valuation Note	Freight Charges 2,026.80		Currency USD	Insurance 632.00	
Other charges 1,222.00			Currency USD	Deductions		Currency	
17. Declarant/Agent Name & Address TANGA MODERN CLEARING AND FORWARDIN 44 BLOCK 1 MARKET STREET P. O. BOX 85 Tanga Tanga	TIN: 100-626-608	18. No Pkgs 8 (CS)		19. Gross Weight 2,608 (Kgs)		20. Net Weight 2,296 (Kgs)	
		21. Entry/Exit Office TZDW		22. Loc. Of Goods		23. AWB/BL/RCN/Shipping Order EPAN000110538	
		Ref. No. & Date 100626608-17-9900143 23/06/2017					

Result of Valuation :

State	Currency	TOTAL FOB	Freight	Insurance	Othe charges	Deductions	Total Customs Value
Declared	TZS	89,895,285.83	4,543,295.15	1,416,697.52	2,739,247.42		98,594,525.92
Assessed	TZS	89,895,285.83	4,543,295.15	1,416,697.52	2,739,247.42		98,594,525.92

Item No.	24. Description	25. H.S. Code	26. Value for Customs	27. FOB Value
1	Other machinery CONVEYING ELEMENTS FOR WHEAT MILLING PLANT	D 8437.80.00.0000	98,594,525.92	89,895,285.83
		A 8437.80.00.0000	98,594,525.92	89,895,285.83

No	28. Model, Specification	Component	Quantity	Unit Price	Item invoice Price
1	CONVEYING ELEMENTS FOR WHEAT MILLING PLANT	GRAVITY SPORTING FOR CHAIN CONVEYOR BRIDGE	D	1	40,103.00
			A	1	40,103.00
			D		
			A		
			D		
			A		

Declaration by Importer/Importer's Agent
(Who must sign and stamp either of the declaration below)

TANZANIA REVENUE AUTHORITY
REPRESENTATIVE

I/We the undersigned, being the Importer/Exporter/Agent* do hereby declare that the information declared on this entry is true and complete and accept fully the conditions and requirements attached to the use of CPC declared therein, and comply with the provision of the Customs Management Act.

I/We the undersigned, being the Importer/Exporter/Agent* do hereby declare that the information declared on this entry is true and complete and accept fully the conditions and requirements attached to the use of CPC declared therein, and comply with the provision of the Customs Management Act.

issued by TRA for importer's information on
TRA's assessment related to HS. Codes &
Customs Values

SIGNATURE

SIGNATURE, DATE AND STAMP

SIGNATURE, DATE AND STAMP

ASSESSMENT DOCUMENT

29. Taxes						
Tax Type	Duty / Tax Base	Rate	Amount	Relief Amount	Relief Code	MOP
IMP	98,594,525.92					1
CPF	89,895,285.83	0.60	539,372.00			1
RDL	98,594,525.92	1.50	1,478,918.00			1
VAT	100,612,815.92	18.00	18,110,307.00			1
Total taxes for item 1			20,128,597.00			

ASSESSMENT DOCUMENT

2. Exporter/Consigner Name & Address LNV TECHNOLOGY PRIVATE LTD 5TH FLOOR, SIGAPIACHI BUILDING, NO: 18/3, RUKMAN, LAKSHMIPATHY ROAD EGMORE, CHENNAI-600 008 INDIA		TIN: 119-104-459	1. Declaration Type IM4	A. Processing/Clearing office TZDL DAR CUSTOMS SERVICE CENTRE		TANSAD Number & Date TZDL-18-1058350 21/02/2018	
			3. No Items 1	4. CL Plan PAD	5. Security Account No.		Receipt Number & Date
			6. Country Last Consignment IN India		7. Trading Country IN India	8. Country of Export IN India	
9. Importer/Consignee Name & Address AMSONS INDUSTRIES (T) LIMITED 295/1-295/2 365/366 MANDELA ROAD KURASINI		TIN: 119-104-459	10. Country of Destination TZ United Republic of		11. Delivery Term Code CIF		Place Dar es Salaam
			12. Nat of Trans 1 9		13. Exchange Rate 2,254.96		14. Currency USD
			15. Invoice No. & Date EX/AMS-369/17-18/067 09/01/2018		Total Invoice Value 118,291.00		
			16. Valuation Note		Freight Charges 9,400.00	Currency USD	Insurance 8,000.00
					Other charges	Currency	Deductions Currency
17. Declarant/Agent Name & Address TANGA MODERN CLEARING AND FORWARDIN 44 BLOCK 1 MARKET STREET P. O. BOX 85 Tanga Tanga		TIN: 100-626-608	18. No Pckgs 1 (NE)		19. Gross Weight 63,000 (Kgs)		20. Net Weight 63,000 (Kgs)
Ref. No. & Date 100626608-18-9900063 21/02/2018			21. Entry/Exit Office TZDW		22. Loc. Of Goods		23. AWB/BL/RCN/Shipping Order HOEGEH03ENTZ0003

Result of Valuation :

State	Currency	TOTAL FOB	Freight	Insurance	Othe charges	Deductions	Total Customs Value
Declared	TZS	266,741,473.36	21,196,624.00	18,039,680.00			305,977,777.36
Assessed	TZS	266,741,473.36	21,196,624.00	18,039,680.00			305,977,777.36

Item No.	24. Description	25. H.S. Code	26. Value for Customs	27. FOB Value
1	Parts: Machinery for sorting, screening, separating; Mixing or kneading machines FOR DESIGN, ENGINEERING SUPPLY OF PLANT MACHINERY FOR CLOSE CIRCUIT CEMENT GRINDING SYSTEMS 70TH PL	D 8474.90.00.0000	305,977,777.36	266,741,473.36
		A 8474.90.00.0000	305,977,777.36	266,741,473.36

No	28. Model, Specification	Component	Quantity	Unit Price	Item Invoice Price
1	BALL MILL SHELL (Equipment no:562 cm1-01)	FOR DESIGN, ENGINEERING SUPPLY OF PLANT MACHINERY FOR CLOSE CIRCUIT CEMENT GRINDING	D 1	118,291.00	118,291.00
			A 1	118,291.00	118,291.00
			D		
			A		
			D		
			A		

Declaration by Importer/Importer's Agent
(Who must sign and stamp either of the declaration below)

I/We the undersigned, being the Importer/Exporter/Agent* do hereby declare that the information declared on this entry is true and complete and accept fully the conditions and requirements attached to the use of CPC declared therein, and comply with the provision of the Customs Management Act.

I/We the undersigned, being the Importer/Exporter/Agent* do hereby declare that the information declared on this entry is true and complete and accept fully the conditions and requirements attached to the use of CPC declared therein, and comply with the provision of the Customs Management Act.

TANZANIA REVENUE AUTHORITY
REPRESENTATIVE

issued by TRA for importer's information on
TRA's assessment related to HS. Codes &
Customs Values

SIGNATURE

SIGNATURE, DATE AND STAMP

SIGNATURE, DATE AND STAMP

Printed on : 21/02/2018 11:49



ASSESSMENT DOCUMENT

29. Taxes						
Tax Type	Duty / Tax Base	Rate	Amount	Relief Amount	Relief Code	MOP
IMP	305,977,777.36					1
CPF	266,741,473.36	0.60	1,600,449.00			1
RDL	305,977,777.36	1.50	4,589,667.00			1
VAT	305,977,777.36			56,190,221.00	A	1
Total taxes for item 1			6,190,116.00			



ASSESSMENT DOCUMENT

2. Exporter/Consigner Name & Address LNV TECHNOLOGY PRIVATE LIMITED 5TH FLOOR, SIGAPI ACHI BUILDING, NO. 18/3 RUKMANI LAKSHMIPATHY ROAD EGMORE CHENNAI - 600 008, INDIA	TIN:	1. Declaration Type IM4	A. Processing/Clearing office TZDL DAR CUSTOMS SERVICE CENTRE	TANSAD Number & Date TZDL-15-1221737 16/07/2015		
	9. Importer/Consignee Name & Address AMSONS INDUSTRIES (T) LIMITED P.O. BOX 22786 DAR ES SALAAM	3. No Items 3	4. CL. Plan PMD	5. Security Account No.	Receipt Number & Date	
		6. Country Last Consignment IN India		7. Trading Country IN India		8. Country of Export IN India
17. Declarant/Agent Name & Address Tanga Modern C & F. Co. Ltd P. O. Box 85 Tanga	TIN: 119-104-459	10. Country of Destination TZ United Republic of	11. Delivery Term Code CIF	Place Dar es Salaam	12. Nat of Trans 1 9	
	13. Exchange Rate 2,055.29	14. Currency USD	Total Invoice Value 94,890.00		15. Invoice No. & Date LNV/369-AMS/15- 22/06/2015	
		16. Valuation Note	Freight Charges 5,324.00	Currency USD	Insurance 5,220.00	Currency USD
Ref. No. & Date 100626608-15-9900989 16/07/2015	TIN: 100-626-608	Other charges		Currency	Deductions	Currency
		18. No Pckgs 13 (PK)		19. Gross Weight 17,665 (Kgs)		20. Net Weight 13,815 (Kgs)
		21. Entry/Exit Office TZDW		22. Loc. Of Goods WTTZDL002		23. AWB/BL/RCN/Shipping Order MSCUIE516837

Result of Valuation :

State	Currency	TOTAL FOB	Freight	Insurance	Othe charges	Deductions	Total Customs Value
Declared	TZS	195,026,468.10	10,942,363.96	10,728,613.80			216,697,445.86
Assessed	TZS	195,026,468.10	10,942,363.96	10,728,613.80			216,697,445.86

Item No.	24. Description	25. H.S. Code	26. Value for Customs	27. FOB Value		
1	Of an output > 75 kW: Electric motors and generators (: Other AC motors, multi- LT MOTOR 7.5KW TO 200KW SUPPLY OF PLANT MACHINERY FOR CLOSE CIRCUIT CEMENT GRINDING MILL SYSTEM	D 8501.53.00.0000	4,316,136.29	195,026,468.10		
		A 8501.53.00.0000	4,316,136.29	195,026,468.10		
No	28. Model, Specification	Component	Quantity	Unit Price	Item invoice Price	
1	LT MOTOR 1SE0166-4N/POLE 160L FRAME TEFC DEDUSTING FAN 612 FN1	LT MOTOR 7.5KW TO 200KW SUPPLY OF PLANT MACHINERY FOR CLOSE CIRCUIT CEMENT GRINDING	D	1	675.00	675.00
			A	1	675.00	675.00
2	LT MOTOR 1SE0166-4N/POLE 160L FRAME TEFC DEDUSTING FAN 592 FN2	LT MOTOR 7.5KW TO 200KW SUPPLY OF PLANT MACHINERY FOR CLOSE CIRCUIT CEMENT GRINDING	D	1	675.00	675.00
			A	1	675.00	675.00
3	LT MOTOR 1SE0163-4N/POLE 160L FRAME TEFC DEDUSTING FAN 532 BC1	LT MOTOR 7.5KW TO 200KW SUPPLY OF PLANT MACHINERY FOR CLOSE CIRCUIT CEMENT GRINDING	D	1	540.00	540.00
			A	1	540.00	540.00

Declaration by Importer/Importer's Agent
(Who must sign and stamp either of the declaration below)

TANZANIA REVENUE AUTHORITY
REPRESENTATIVE

I/We
the undersigned, being the Importer/Exporter/Agent*
do hereby declare that the information declared on
this entry is true and complete and accept fully the
conditions and requirements attached to the use of
CPC declared therein, and comply with the provision of
the Customs Management Act.

I/We
the undersigned, being the Importer/Exporter/Agent*
do hereby declare that the information declared on
this entry is true and complete and accept fully the
conditions and requirements attached to the use of
CPC declared therein, and comply with the provision of
the Customs Management Act.

issued by TRA for importer's information on
TRA's assessment related to HS. Codes &
Customs Values

SIGNATURE

SIGNATURE, DATE AND STAMP

SIGNATURE, DATE AND STAMP

ASSESSMENT DOCUMENT

29. Taxes						
Tax Type	Duty / Tax Base	Rate	Amount	Relief Amount	Relief Code	MOP
IMP	4,316,136.29					1
VAT	4,316,136.29	18.00	776,905.00			1
CPF	3,884,498.10	0.60	23,307.00			1
RDL	4,316,136.29				A	1
Total taxes for item 1			800,212.00			
Item No.	24. Description	25. H.S. Code	26. Value for Customs	27. FOB Value		
2	Having a power handling capacity >650 kVA but <=10,000 kVA					
	CONVERTER DUTY TRANSFORMER 900KVA FOR SUPPLY OF PLANT MACHINERY FOR CEMENT GRINDING MILL SYSTEM	D 8504.22.00.0000	43,503,913.41	195,026,468.10		
		A 8504.22.00.0000	43,503,913.41	195,026,468.10		
No	28. Model, Specification	Component	Quantity	Unit Price	Item invoice Price	
1	CONVERTER DUTY TRANSFORMER 900KVA FOR CM CIRCULATING FAN	SUPPLY OF PLANT MACHINERY FOR CLOSE CIRCUT CEMENT GRINDING MILL SYSTEM 70TPH	D 1	19,050.00	19,050.00	1
			A 1	19,050.00	19,050.00	1
29. Taxes						
Tax Type	Duty / Tax Base	Rate	Amount	Relief Amount	Relief Code	MOP
IMP	43,503,913.41					1
VAT	43,503,913.41	18.00	7,830,705.00			1
CPF	39,153,274.50	0.60	234,920.00			1
RDL	43,503,913.41					1
Total taxes for item 2			8,065,625.00			
Item No.	24. Description	25. H.S. Code	26. Value for Customs	27. FOB Value		
3	Of copper: Insulated (including enamelled or anodised) wire, cable (:Winding					
	11KV COPPER CONDUCTOR FOR SUPPLY OF PLANT MACHINERY FOR CLOSE CIRCUT CEMENT GRINDING MILL SYSTEM	D 8544.11.00.0000	168,877,396.16	195,026,468.10		
		A 8544.11.00.0000	168,877,396.16	195,026,468.10		
No	28. Model, Specification	Component	Quantity	Unit Price	Item invoice Price	
1	11 KV UE 3 CORE ,240MM COPPER CONDUCTOR	SUPPLY OF PLANT MACHINERY FOR CLOSE CIRCUT CEMENT GRINDING MILL SYSTEM 70TPH	D 494	149.70	73,950.00	1
			A 494	149.70	73,950.00	1
29. Taxes						
Tax Type	Duty / Tax Base	Rate	Amount	Relief Amount	Relief Code	MOP
IMP	168,877,396.16	2.50	4,221,935.00	37,997,415.00	A	1
VAT	173,099,331.16	18.00	31,157,880.00			1
CPF	151,988,695.50	0.60	911,933.00			1
RDL	168,877,396.16			2,533,161.00	A	1



ASSESSMENT DOCUMENT

29. Taxes						
Tax Type	Duty / Tax Base	Rate	Amount	Relief Amount	Relief Code	MOP
Total taxes for item 3			36,291,748.00			



ASSESSMENT DOCUMENT

2. Exporter/Consigner Name & Address LNV TECHNOLOGY PRIVATE LIMITED 5TH FLOOR, SIGAPI ACHI BUILDING, NO. 18/3 RUKMANI LAKSHMIPATHY ROAD EGMORE CHENNAI - 600 008, INDIA	TIN: 119-104-459	1. Declaration Type IM4	A. Processing/Clearing office TZDL DAR CUSTOMS SERVICE CENTRE		TANSAD Number & Date TZDL-15-1305717 21/09/2015		
		3. No Items 1	4. Cl. Plan PAD	5. Security Account No.		Receipt Number & Date	
		6. Country Last Consignment IN India		7. Trading Country IN India		8. Country of Export IN India	
9. Importer/Consignee Name & Address AMSONS INDUSTRIES (T) LIMITED P.O. BOX 22786 DAR ES SALAAM	TIN: 119-104-459	10. Country of Destination TZ United Republic of		11. Delivery Term Code CIF	Place Dar es Salaam	12. Nat of Trans 1 9	
		13. Exchange Rate 2,175.35	14. Currency USD	Total Invoice Value 51,088.05		15. Invoice No. & Date LNV7/369-AMS/15- 19/08/2015	
		16. Valuation Note	Freight Charges 7,000.00		Currency USD	Insurance 2,810.00	Currency USD
17. Declarant/Agent Name & Address Tanga Modern C & F. Co. Ltd P. O. Box 85 Tanga	TIN: 100-626-608	Other charges		Currency	Deductions Currency		
		18. No Pkgs 8 (PK)		19. Gross Weight 27,525 (Kgs)		20. Net Weight 16,325 (Kgs)	
		21. Entry/Exit Office TZDW		22. Loc. Of Goods		23. AWB/BL/RCN/Shipping Order PLDCHNDAR053	
Ref.No. & Date 100626608-15-9901195 21/09/2015							

Result of Valuation :

State	Currency	TOTAL FOB	Freight	Insurance	Othe charges	Deductions	Total Customs Value
Declared	TZS	111,134,389.57	6,236,728.45	6,112,733.50			123,483,851.52
Assessed	TZS	111,134,389.57	15,227,450.00	6,112,733.50			132,474,573.07

Item No.	24. Description	25. H.S. Code	26. Value for Customs	27. FOB Value	
1	Other machinery SUPPLY OF COMPLETE CEMENT GRINDING PLANT WITHY ACCESSORIES(PARTIAL SHIPMENT FOR DESIGN,ENGINEERING O	D 8474.80.00.0000	123,483,851.52	111,134,389.57	
		A 8474.80.00.0000	132,474,573.07	111,134,389.57	
No	28. Model, Specification	Component	Quantity	Unit Price	Item invoice Price
1	SUPPLY OF COMPLETE ECO MILLING PLANT WITH ACCESSORIES(PARTIAL SHIPMENT)	FOR DESIGN,ENGINEERING,SUPLY OF PLANT MACHINERY FOR CLOSE CIRCUIT CEMENT GRINDING	D 1	51,088.05	51,088.05
			A 1	51,088.05	51,088.05
			D		
			A		
			D		
			A		

Declaration by Importer/Importer's Agent (Who must sign and stamp either of the declaration below)		TANZANIA REVENUE AUTHORITY REPRESENTATIVE
I/We the undersigned, being the Importer/Exporter/Agent* do hereby declare that the information declared on this entry is true and complete and accept fully the conditions and requirements attached to the use of CPC declared therein, and comply with the provision of the Customs Management Act.	I/We the undersigned, being the Importer/Exporter/Agent* do hereby declare that the information declared on this entry is true and complete and accept fully the conditions and requirements attached to the use of CPC declared therein, and comply with the provision of the Customs Management Act.	
SIGNATURE, DATE AND STAMP		issued by TRA for importer's information on TRA's assessment related to HS. Codes & Customs Values
SIGNATURE, DATE AND STAMP		SIGNATURE

ASSESSMENT DOCUMENT

29. Taxes						
Tax Type	Duty / Tax Base	Rate	Amount	Relief Amount	Relief Code	MOP
IMP	132,474,573.07					1
VAT	132,474,573.07			23,845,424.00	A	1
CPF	111,134,389.57	0.60	666,807.00			1
RDL	132,474,573.07	1.50	1,987,119.00			1
Total taxes for item 1			2,653,926.00			

AMSONS INDUSTRIES (T) LTD

Value of Exemption Enjoyed

	Value of Exemption	EXEMPTION
	Import Duty	Tshs. 534,018,948.519
	VAT	Tshs.348,535,562.00
	TOTAL	Tshs.882,554,510.519



AMSONS INDUSTRIES (T) LTD

P.O.Box. 22786, Plot No. 62- 64, Kilwa Road
Mbagala Industrial Area, Dar Es Salaam, Tanzania
Email: Info@camelcement.net. Phone: + 255 655 019 099

Ref: AIL/12/06/2018

12nd June, 2018

EXECUTIVE DIRECTOR,
TANZANIA INVESTMENT CENTRE,
P.O.BOX 938,
DAR ES SALAAM.
UFS
COMMISIONER FOR CUSTOMS & EXCISE,
P.O.BOX 9053,
DAR ES SLAAM.



Dear Sir,

RE: APPLICATION FOR EXTENDING TIC CERTIFICATE No.042454 OF 9TH JUNE, 2016 TIN No.119-104-459

The above heading has reference.

Our project certificate was issued on 10th June, 2013 and up to June 2018 the five years has reached but we have not finished the project due to financial situation, we are in the final stages as we are making extension of our cement plant project which we kindly request your good office to extend us to import items to finish the project plant.

We are hereby attaching all the required documents for your approval consideration.

Yours faithfully,

For Amsons Industries (T) Ltd.

[Handwritten Signature]
Rajagopal
General Manager.



PP.10/042454/4

05th July, 2018

Managing Director
Amson Industries (T) Ltd
P.O.Box 22786

DAR ES SALAAM

RE: EXTENSION OF CERTIFICATE OF INCENTIVES NO: 042454

Reference is made to your letter of 12nd June, 2018, in which you requested extension of the projects implementation period to enable your company to procure the remaining projects capital goods for your cement manufacturing project.

Tax exemptions are offered to help investment projects to reduce burden during importation of all project capital goods and deemed capital goods in order to implement a project and it cannot be extended beyond five years. Since your project implementation period of five (5) years has already completed, I regret to inform you that TIC cannot extend the implementation period, however your project can continue using the Certificate of Incentives to enjoy other non-tax incentives.

Wishing you well while implementing the project.

TANZANIA INVESTMENT CENTRE



Geoffrey I. Mwambe

EXECUTIVE DIRECTOR