

MINUTE SHEET

Dokezo
No.

TO: Ag. C-DIF

FROM: ZONAL MANAGER (CZ - DODOMA).

DATE: April 17, 2020

REF: SUBMISSION OF A PROJECT VERIFICATION VISIT REPORT (PVV) FOLLOWING APPLICATION FOR RENEWAL AND LOCATION AMENDMENT FOR CERTIFICATE OF INCENTIVES ISSUED TO INVESTOR-QSTEK FARMING LIMITED, MANYONI -SINGIDA REGION.

We have adhered to instructions from your office requesting Central zone office to conduct PVV on QSTEK FARMING LIMITED project following their application for renewal of Certificate of incentive No.042903 which expired in July 2018.

Central zone assigned Mr Juma A. Nzima (Investment Promotion/Facilitation Officer) to conduct the visit as instructed.

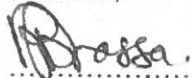
The visit was conducted to the project site at Manyoni District on 8th April 2020, where physical verification was thoroughly conducted. Exhaustive report was prepared with collections of evidences to support it.

Also note that the PVV revealed that the project location was changed from plot No. 28-35 Block 'A' Njuki, Singida to Plot No. 1-12 Block 'A' Mnadani Area, Manyoni hence investor was advised to include this change to the certificate to be issued.

From the findings of the report, I therefore recommend the project Extension for 3 years and amendment of project location on the said Certificate of Incentives for the project carried by QSTEK FARMING LIMITED. However, Change of the project location should be considered on the system change and the certificate too as per the evidences attached (title deed).

We have attached a PVV report with copies of evidences and project photos.

I submit,



Revocatus A. Rasheli

Zonal Manager(C)

**PROJECT VERIFICATION VISIT (PVV) REPORT FOR QSTEK FARMING LIMITED-MANYONI,
SINGIDA TANZANIA CONDUCTED ON 8TH APRIL, 2020**

		STATUS	CHALLENGES
1.	Project Name Project Location as per current certificate of incentives	QSTEK Farming Limited Manguanjuki ,Nkuku ward ,Singida Urban	Delayed change of project site from Manguanjuki ,Nkuku ward ,Singida Urban to Majengo Mmadani Area in Manyoni district caused by Singida Municipality decision of rejecting to change the use of the land to industrial use for the reason that master plan was not yet established for industrial areas.
	New Project Location where the project is being implemented currently	Plot No 1-12 Block A, Mmadani Area, Manyoni Town Council,Singida Region.	The project is being implemented on this new project location. TIC database and existing certificate has not been updated. New Certificate bear the new project location. Title deeds are attached
2.	Contact persons	Mr. Emmanuel Nagumwa Mobile +255 767 670 517	
3.	Project Registration date	17 th July, 2015 valid to June, 2018	Project Implementation period expired in June, 2018. Almost two years have elapsed without project implementation period validity. For the implementation period to be valid for 1 year, TIC is to grant extension period for three years i.e. implementation period July 2018-June 2021
4.	Project Implementation Period	July, 2015-June, 2018	
5.	Sector	Manufacturing	

		STATUS	CHALLENGES
6.	Sub Sector	Edible oil production (Sunflower oil) and related products such as sunflower seed cakes for animal feeds.	
7.	Objective of the Visit	To verify project implementation status subsequent to an application for project implementation period extension	
8.	Planned Activities/Investment	The investor informed the PVV team that only after the TIC extension is obtained, the company will complete the procurement and importation of the remaining plant and machinery parts, such as those in solvent extraction line, dewaxing equipment, conveyors and related parts. This is possible as TADB bank had financed them since April last year (2019), and currently have reached a stage of requiring importation of the remaining additional machinery parts to accomplish the installation works for production to start.	
9.	Reasons for Extension	The investor has already made some arrangements for 'Warehouse Management for seed stocking from National Microfinance Bank (NMB)-Manyoni of approximately TZS 1.5 billion, for buying seeds for stocking from June 2020 onwards (out growers will benefit on this arrangement). The arrangement is in process and the bank is following up the completion of the only big factory in Manyoni district. Investor has applied for project implementation period extension for 12 months to enable the company complete installations of plant systems in all sections of from oil seed cleaning and conditioning to solvent extraction section which requires importation of some additional parts to complete the whole production system at the factory. The project site location had changed also from Manguanjuki, Singida Urban to Plot no.1-12 Block A Mmadani Area, Manyoni district.	
10.	Current Status and Findings	Investor has relocated the project site from Singida Urban to Plot no.1-12 Block 'A' Mmadani Area, Manyoni District since July 2016 after getting welcoming support from Manyoni District Council by facilitating an investor to acquire a tittle deed for an area of 39,102 square meters (Approx, 9 Acres of land) within a month. The construction of project infrastructures such as fixing of Fabricated	Delay in decision and later rejection by the Singida Municipality to change land use plan for the initial planned project site made a tremendous wastage of

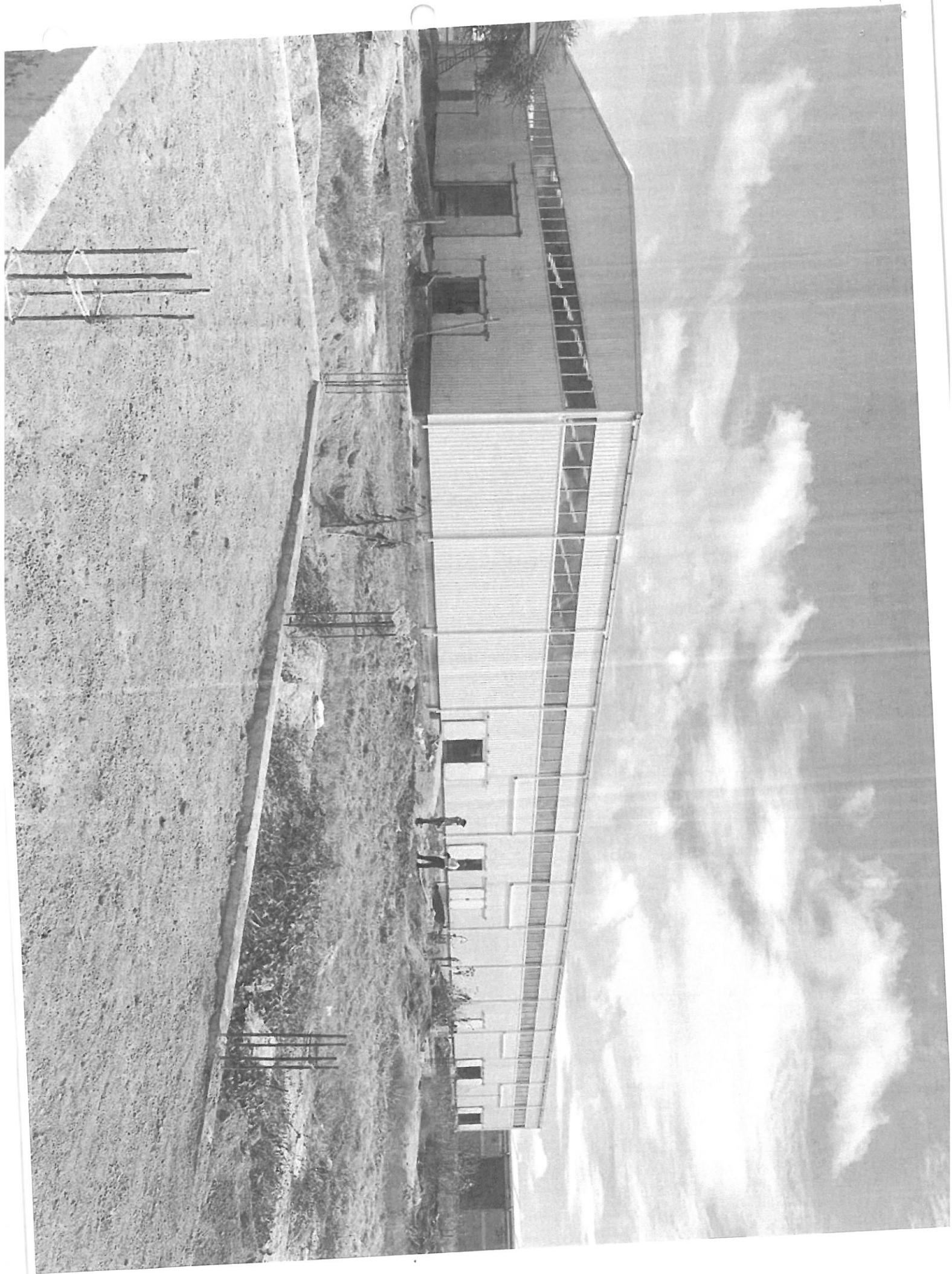
		STATUS	CHALLENGES
		fully exemption due to failure to begin the project construction and implementation on time.	planning to apply for additional capital/ deemed capital goods through TIC and TRA once this extension is granted. Initial TRA approval letter and comprehensive list of capital and deemed capital goods which were not utilized is attached.
11.	Zonal Investment Promotion and Facilitation Officer's Recommendations	The extension of the CoI is necessary to make the project implementation to complete as per the investor's implementation milestones. Since the delays were genuine and supported by the evidences attached. To make a role model project owned by Tanzanians investors in Manyoni district, more facilitation is required from all Government MDA's. However, besides Extending the implementation period in the Certificate of Incentives, Change of particulars of the Project location should be taken care(both on the certificate and system), since the expired certificate indicated the project is in Manguanjuki,Nkuku Ward Singida Urban while it was relocated to Plot No.1-12 Block A,Mnadani Area ,Manyoni district(Scanned Tittle deed attached)	
12.	Project Photos	The project photos are attached with this report, however there were live activities proceeding at project site.	

I submit



Juma A. Nzima

Investment Promotion and Facilitation Officer-Central zone



OSTEK FARMING LIMITED
P.O.BOX 106242
DAR ES SALAAM

LIST OF EXEMPTION MATERIALS

NO	ITEM NAME	UNIT MEASUREMENT	QTY	ITEM GROUP	ITEM PRICE (FOB USD)	TIN	EXEMPTION REFERENCE	EXEMPTION DATE
A	Seeds Processing Machines	Lot			85,250.00	124-391-733	No:	Mixed
1	Feeder	pcs	1	Equipment for seed Processing		124-391-733		
2	Bucket elevator	pcs	1	Equipment for seed Processing		124-391-733		
3	Magnetic selector	pcs	1	Equipment for seed Processing		124-391-733		
4	Cleaning screen	pcs	1	Equipment for seed Processing		124-391-733		
5	Specific gravity stoner	pcs	1	Equipment for seed Processing		124-391-733		
6	Cyclone dust remover	pcs	1	Equipment for seed Processing		124-391-733		
7	Material discharger	pcs	1	Equipment for seed Processing		124-391-733		
8	Dust removal fan	pcs	1	Equipment for seed Processing		124-391-733		
9	Bucket elevator	pcs	1	Equipment for seed Processing		124-391-733		
10	Husking machine	pcs	1	Equipment for seed Processing		124-391-733		
11	Bucket elevator	pcs	1	Equipment for seed Processing		124-391-733		
12	Kernel husk separator	pcs	1	Equipment for seed Processing		124-391-733		
13	Bucket elevator	pcs	1	Equipment for seed Processing		124-391-733		
14	Layer steam-cooker	pcs	1	Equipment for seed Processing		124-391-733		
15	Bucket elevator	pcs	1	Equipment for seed Processing		124-391-733		
16	Material distribution screw	pcs	1	Equipment for seed Processing		124-391-733		
17	Spiral oil press	pcs	3	Equipment for seed Processing		124-391-733		
18	Oil flow groove	pcs	1	Equipment for seed Processing		124-391-733		
19	Gate screw conveyor	pcs	2	Equipment for seed Processing		124-391-733		
20	Bucket elevator	pcs	1	Equipment for seed Processing		124-391-733		
21	Oil tank	pcs	1	Equipment for seed Processing		124-391-733		
22	Gear oil pump	pcs	2	Equipment for seed Processing		124-391-733		
23	Leaf vibration filter	pcs	1	Equipment for seed Processing		124-391-733		
24	Crude oil storage tank	pcs	1	Equipment for seed Processing		124-391-733		

25	Air compressor	pcs	1	Equipment for seed Processing		124-391-733		
26	Installation materials	set	1	Equipment for seed Processing		124-391-733		
27	Power distribution control	pcs	1	Equipment for seed Processing		124-391-733		
28	Electrical wires and cables	set	1	Equipment for seed Processing		124-391-733		
29	Instrument, pipes and valves	set	1	Equipment for seed Processing		124-391-733		Spared locally
SUNFLOWER OIL REFINING PRODUCTION								
30	Oil refining tank	pcs	2	Equipment for oil refinery	54,180.00	124-391-733		Utilized
31	Decolorization tank	pcs	1	Equipment for oil refinery		124-391-733		
32	Leaf vibration filter	pcs	1	Equipment for oil refinery		124-391-733		
33	L-ye tank	pcs	1	Equipment for oil refinery		124-391-733		
34	Hot water tank	pcs	1	Equipment for oil refinery		124-391-733		
35	Oil separation tank	pcs	1	Equipment for oil refinery		124-391-733		
36	Bleaching clay box	pcs	1	Equipment for oil refinery		124-391-733		
37	Spray catcher	pcs	1	Equipment for oil refinery		124-391-733		
38	Water jet vacuum pump	pcs	1	Equipment for oil refinery		124-391-733		
39	Oil tank	pcs	1	Equipment for oil refinery		124-391-733		
40	Steam super-heater	pcs	1	Equipment for oil refinery		124-391-733		
41	Steam distributor	pcs	1	Equipment for oil refinery		124-391-733		
42	Air compressor	pcs	1	Equipment for oil refinery		124-391-733		
43	Phosphoric acid tank	pcs	1	Equipment for oil refinery		124-391-733		
44	Waste oil tank	pcs	1	Equipment for oil refinery		124-391-733		
45	Bleaching oil pump	pcs	1	Equipment for oil refinery		124-391-733		
46	Clean circulating water pump	pcs	1	Equipment for oil refinery		124-391-733		
47	Oil Gas separator	pcs	1	Equipment for oil refinery		124-391-733		
48	Decolorization tank	pcs	1	Equipment for oil refinery		124-391-733		
49	Catcher	pcs	1	Equipment for oil refinery		124-391-733		
50	New type steam jet pump	pcs	1	Equipment for oil refinery		124-391-733		
51	Heat conduction oil super-	pcs	1	Equipment for oil refinery		124-391-733		
52	Cooler	pcs	1	Equipment for oil refinery		124-391-733		
53	Oil pump	pcs	1	Equipment for oil refinery		124-391-733		
54	Deodorization vacuum	pcs	1	Equipment for oil refinery		124-391-733		
55	Installation materials	set	1	Equipment for oil refinery		124-391-733		
56	Power distribution control	set	1	Equipment for oil refinery		124-391-733		

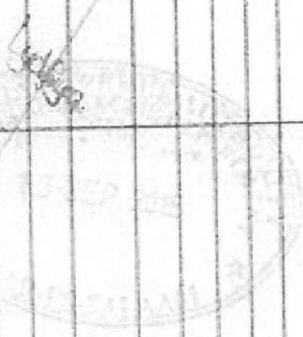
57	Electrical wires and cables	set	1	Equipment for oil refinery		124-391-733	
58	Instrument and valves	set	1	Equipment for oil refinery			
59							
C OUTDOOR AUXILIARY EQUIPMENTS FOR OIL		Lot					
					52,145.00	124-391-733	utilized
60	Heat conduction oil furnace	pcs	1	Equipment for oil refinery		124-391-733	
61	Steam generator	pcs	1	Equipment for oil refinery		124-391-733	
62	Cooling tower	pcs	1	Equipment for oil refinery		124-391-733	
63	Circulating water pump	pcs	1	Equipment for oil refinery		124-391-733	
64	Crude oil tank	pcs	1	Equipment for oil refinery		124-391-733	
65	Refined oil tank	pcs	1	Equipment for oil refinery		124-391-733	
66	Oil pump	pcs	1	Equipment for oil refinery		124-391-733	
D OIL FILLING MACHINE		Lot			21,940.00	124-391-733	utilized
67	Double-head high precision small package filling machine	set	1	Equipment for oil refinery		124-391-733	
68	Crawler type capping machine	set	1	Equipment for oil refinery		124-391-733	
69	Inspection light box	set	1	Equipment for oil refinery		124-391-733	
70	Stainless steel conveying belt	set	1	Equipment for oil refinery		124-391-733	
71	Small character ink-jet printer	set	1	Equipment for oil refinery		124-391-733	
72	Single side labeling machine	set	1	Equipment for oil refinery		124-391-733	
73	Boxing platform	pcs	1	Equipment for oil refinery		124-391-733	
74	Semi-automatic box sealing machine	pcs	1	Equipment for oil refinery		124-391-733	
75	No power roller	m	2	Equipment for oil refinery		124-391-733	
E OIL CAKE PELLETING MACHINE		Lot			25,725.00	124-391-733	utilized
76	Hammer mill	pcs	1	Equipment for seed processing		124-391-733	
77	Screw conveyor	pcs	1	Equipment for seed processing		124-391-733	
78	Horizontal mixer	pcs	1	Equipment for seed processing		124-391-733	
79	Screw conveyor	pcs	1	Equipment for seed processing		124-391-733	
80	Pellet machine with conditioner	pcs	1	Equipment for seed processing		124-391-733	
81	Bucket conveyor	pcs	1	Equipment for seed processing		124-391-733	
82	Pellet packaging machine	pcs	1	Equipment for seed processing		124-391-733	
83	Control box	pcs	1	Equipment for seed processing		124-391-733	

84	Control box	pcs	1	Equipment for seed processing		124-391-733	
85	Bucket elevator	pcs	1	Equipment for seed processing		124-391-733	
86	Screw conveyor	pcs	1	Equipment for seed processing		124-391-733	
87	Trestle	pcs	1	Equipment for seed processing		124-391-733	
F	INSTALLATION TOOLS	Lot			2,000.00	124-391-733	Utilized
88	Spline end wrenches	Set	1	Equipment for oil refinery		124-391-733	
89	Shifting wrench	pcs	4	Equipment for oil refinery		124-391-733	
90	Tongs	pcs	2	Equipment for oil refinery		124-391-733	
91	Screw driver	pcs	4	Equipment for oil refinery		124-391-733	
92	Electric welding machine	Set	4	Equipment for oil refinery		124-391-733	
93	Cutting machine	Set	1	Equipment for oil refinery		124-391-733	
94	Oxygen cutting machine	Set	1	Equipment for oil refinery		124-391-733	
95	Beed ruler	Set	1	Equipment for oil refinery		124-391-733	
96	Right angle ruler	Set	1	Equipment for oil refinery		124-391-733	
97	Flexible ruler(flaps-measure)	Set	1	Equipment for oil refinery		124-391-733	
98	State pencil	Set	1	Equipment for oil refinery		124-391-733	
99	Compass	Set	1	Equipment for oil refinery		124-391-733	
Q	LABORATORY EQUIPMENTS	Lot			9,800.00	124-391-733	Utilized
	UTENSILS						
100	Dryer 30cm	pcs	2	Equipment for oil refinery		124-391-733	
101	Wild-mouth bottle 1000ml	pcs	4	Equipment for oil refinery		124-391-733	
102	Ground glass bottle 1000ml	pcs	2	Equipment for oil refinery		124-391-733	
103	Ground glass bottle 500ml	pcs	2	Equipment for oil refinery		124-391-733	
104	Conical flask 250ml	pcs	5	Equipment for oil refinery		124-391-733	
105	Conical flask 150ml	pcs	5	Equipment for oil refinery		124-391-733	
106	Conical flask 50ml	pcs	5	Equipment for oil refinery		124-391-733	
107	Beaker 500ml	pcs	2	Equipment for oil refinery		124-391-733	
108	Beaker 200ml	pcs	4	Equipment for oil refinery		124-391-733	
109	Beaker 100ml	pcs	4	Equipment for oil refinery		124-391-733	
110	Beaker 50ml	pcs	4	Equipment for oil refinery		124-391-733	
111	Brush Φ 20	pcs	3	Equipment for oil refinery		124-391-733	

112	Measuring cylinder 100ml	pcs	2	Equipment for oil refinery	124-391-733		
113	Measuring cylinder 50ml	pcs	4	Equipment for oil refinery	124-391-733		
114	Quantitative bottle 1000ml	pcs	2	Equipment for oil refinery	124-391-733		
115	Burette bottle 25ml	pcs	5	Equipment for oil refinery	124-391-733		
116	Pipette 10ml	pcs	2	Equipment for oil refinery	124-391-733		
117	Pipette 5ml	pcs	2	Equipment for oil refinery	124-391-733		
118	Rubber tube	set	1	Equipment for oil refinery	124-391-733		
119	Tweezer	pcs	2	Equipment for oil refinery	124-391-733		
120	Alkali burette	pcs	2	Equipment for oil refinery	124-391-733		
121	Acid burette	pcs	2	Equipment for oil refinery	124-391-733		
122	Burette stand	pcs	2	Equipment for oil refinery	124-391-733		
123	Rubber pipette bulb	pcs	5	Equipment for oil refinery	124-391-733		
124	Glass rod	pcs	2	Equipment for oil refinery	124-391-733		
125	Rubber plug/different	pcs	3	Equipment for oil refinery	124-391-733		
126	Thermometer 100°C/400°C	pcs	2	Equipment for oil refinery	124-391-733		
127	Alcohol lamp	pcs	1	Equipment for oil refinery	124-391-733		
128	Universal head	pcs	2	Equipment for oil refinery	124-391-733		
129	Detergent	Bag	5	Equipment for oil refinery	124-391-733		
130	Sample distribution plate	pcs	2	Equipment for oil refinery	124-391-733		
131	Needle tubing 25ml	pcs	5	Equipment for oil refinery	124-391-733		
132	Qualitative filter paper Φ12.5	Box	5	Equipment for oil refinery	124-391-733		
133	Gravimeter	pcs	1	Equipment for oil refinery	124-391-733		
134	Plastic wash bottle	pcs	2	Equipment for oil refinery	124-391-733		
135	V measuring burette	Set	1	Equipment for oil refinery	124-391-733		
136	Funnel	pcs	2	Equipment for oil refinery	124-391-733		
	INSTRUMENT						
137	Weight sensitivity balance 1/10000 (300g)	pcs	1	Equipment for oil refinery	124-391-733		
138	Counter balance 300g	pcs	1	Equipment for oil refinery	124-391-733		
139	Baume degree meter 0-30Be	pcs	2	Equipment for oil refinery	124-391-733		
140	Shtoke point test instrument	pcs	1	Equipment for oil refinery	124-391-733		
141	Lowibond colorimeter	pcs	1	Equipment for oil refinery	124-391-733		
142	Drying oven	pcs	1	Equipment for oil refinery	124-391-733		
143	Constant temperature water bath pot	pcs	1	Equipment for oil refinery	124-391-733		

144	Electric stove (single connection)	pcs	1	Equipment for oil refinery	124-391-733
145	Calender	pcs	1	Equipment for oil refinery	124-391-733
146	90 degree geometrical clamp	pcs	5	Equipment for oil refinery	124-391-733
147	Medicinal ladle	pcs	10	Equipment for oil refinery	124-391-733
11	SPARE PARTS FOR MACHINES	Lot			1,295.00
148	Spherical surface ball bearing with square housing	pcs	20	Equipment for seed processing	124-391-733
149	Spherical surface ball bearing with vertical pillow block	pcs	12	Equipment for seed processing	124-391-733
150	Tapered roller bearing	pcs	3	Equipment for seed processing	124-391-733
151	Tapered roller bearing	pcs	6	Equipment for seed processing	124-391-733
152	Tapered roller bearing	pcs	3	Equipment for seed processing	124-391-733
153	Seal for Gear pump KCH83.3	set	2	Equipment for seed processing	124-391-733
154	Seal for bleaching pump	set	2	Equipment for seed processing	124-391-733
155	Seal for clean circulating water pump	set	2	Equipment for seed processing	124-391-733
156	Seal for oil pump	set	2	Equipment for seed processing	124-391-733
157	Seal for decodization vacuum circulating water pump	set	2	Equipment for seed processing	124-391-733
158	Seal for circulating water pump	set	2	Equipment for seed processing	124-391-733
159	Seal for oil pump	set	2	Equipment for seed processing	124-391-733
160	Slight glass	pcs	10	Equipment for seed processing	124-391-733
161	Glass pipe	pcs	10	Equipment for seed processing	124-391-733
162	Pressure gauge	pcs	3	Equipment for seed processing	124-391-733
163	Triangular belt for compressor	pcs	2	Equipment for seed processing	124-391-733
164	Graphite gasket	pcs	5	Equipment for seed processing	124-391-733
165	Graphite gasket	pcs	5	Equipment for seed processing	124-391-733
166	Graphite gasket	pcs	5	Equipment for seed processing	124-391-733
167	Graphite gasket	pcs	5	Equipment for seed processing	124-391-733
168	Ball valve	pcs	3	Equipment for seed processing	124-391-733

Spare parts are not qualified for descriptions



I	WEARING PARTS FOR OIL PRESS	Lot							
169	squeeze bar	pcs	27	Equipment for seed processing		4,200.00	124-391-733		
170	spacer	pcs	1	Equipment for seed processing			124-391-733		
171	cake discharging ring	pcs	1	Equipment for seed processing			124-391-733		
172	1 squeeze loop	pcs	1	Equipment for seed processing			124-391-733		
173	2# squeeze loop	pcs	10	Equipment for seed processing			124-391-733		
174	3# squeeze loop	pcs	2	Equipment for seed processing			124-391-733		
175	4# squeeze loop	pcs	3	Equipment for seed processing			124-391-733		
176	5# squeeze loop	pcs	1	Equipment for seed processing			124-391-733		
177	A5# squeeze loop	pcs	2	Equipment for seed processing			124-391-733		
178	6# squeeze loop	pcs	1	Equipment for seed processing			124-391-733		
179	1# 2# squeeze spiral	pcs	2	Equipment for seed processing			124-391-733		
180	3# squeeze spiral	pcs	1	Equipment for seed processing			124-391-733		
181	4# squeeze spiral(Φ92)	pcs	1	Equipment for seed processing			124-391-733		
182	4# squeeze spiral(Φ100)	pcs	1	Equipment for seed processing			124-391-733		
183	5# squeeze spiral(L120)	pcs	1	Equipment for seed processing			124-391-733		
184	6# squeeze spiral(L124)	pcs	1	Equipment for seed processing			124-391-733		
185	Slag discharging head	pcs	1	Equipment for seed processing			124-391-733		
186	Cover of gear box	pcs	1	Equipment for seed processing			124-391-733		
J	WEARING PARTS FOR PELLETING MACHINE	Lot				7,400.00	124-391-733		
187	Die	pcs	5	Equipment for seed processing			124-391-733		
188	Roller	Set	5	Equipment for seed processing			124-391-733		
189	Sieve and hammer	Set	6	Equipment for seed processing			124-391-733		
K	PREFABRICATED WORKSHOP	Lot				140,931.74	124-391-733		
190	H beam & column	Set	1	Building Material			124-391-733		
191	Roof purlin	Set	1	Building Material			124-391-733		
192	Wall purlin	Set	1	Building Material			124-391-733		
193	steel frame (for supporting partition panel)	Set	1	Building Material			124-391-733		

Spare parts are not qualified for exemptions.

Whited

194	Tie bar	Set	1	Building Material		124-391-733		
195	supporting brace	Set	1	Building Material		124-391-733		
196	brace	Set	1	Building Material		124-391-733		
197	knee brace	Set	1	Building Material		124-391-733		
198	casing pipe	Set	1	Building Material		124-391-733		
199	Roof panel	Set	1	Building Material		124-391-733		
200	self-tapping screw	Set	1	Building Material		124-391-733		
201	tile mat	Set	1	Building Material		124-391-733		
202	skylight panel	Set	1	Building Material		124-391-733		
203	Ventilator	Set	1	Building Material		124-391-733		
204	Gutter	Set	1	Building Material		124-391-733		
205	eave bracing parts	Set	1	Building Material		124-391-733		
206	downspout	Set	1	Building Material		124-391-733		
207	Fastigium edgfold and Flashing covered edge	Set	1	Building Material		124-391-733		
208	ridge tile	Set	1	Building Material		124-391-733		
209	Saddle buckle	Set	1	Building Material		124-391-733		
210	Protection accessories	Set	1	Building Material		124-391-733		
211	Wall panel	Set	1	Building Material		124-391-733		
212	partitional panel	Set	1	Building Material		124-391-733		
213	fireproof partition panel	Set	1	Building Material		124-391-733		
214	Fastigium edgfold and Flashing covered edge	Set	1	Building Material		124-391-733		
215	sandwich panel sliding door	Set	1	Building Material		124-391-733		
216	EPPS sandwich panel door	Set	1	Building Material		124-391-733		
217	Aluminium alloy window awning	Set	1	Building Material		124-391-733		
218	awning	Set	1	Building Material		124-391-733		
219	door edging	Set	1	Building Material		124-391-733		
220	window edging	Set	1	Building Material		124-391-733		
221	Anchor bolt	Set	1	Building Material		124-391-733		
222	Anchor bolt nut	Set	1	Building Material		124-391-733		
223	High strength bolt	Set	1	Building Material		124-391-733		
224	High strength bolt	Set	1	Building Material		124-391-733		
225	Common bolt	Set	1	Building Material		124-391-733		



226	Nut	Set	1	Building Material		124-391-733		
227	Nut	Set	1	Building Material		124-391-733		
228	Turn buckle	Set	1	Building Material		124-391-733		
229	Connection pos	Set	1	Building Material		124-391-733		
1	FABRICATED ROOFING	Lot						
	MAIN STEEL STRUCTURE							
230	H beam & column	Set	1	Prefabricated Building Material		124-391-733		
231	Roof purlin	Set	1	Prefabricated Building Material		124-391-733		
232	Tie bar	Set	1	Prefabricated Building Material		124-391-733		
233	lateral supporting	Set	1	Prefabricated Building Material		124-391-733		
234	brace	Set	1	Prefabricated Building Material		124-391-733		
235	knee brace	Set	1	Prefabricated Building Material		124-391-733		
236	casing pipe	Set	1	Prefabricated Building Material		124-391-733		
237	Roof panel	Set	1	Prefabricated Building Material		124-391-733		
238	self-tapping screw	Set	1	Prefabricated Building Material		124-391-733		
239	side-wall	Set	1	Prefabricated Building Material		124-391-733		
240	skylight panel	Set	1	Prefabricated Building Material		124-391-733		
241	Gutter	Set	1	Prefabricated Building Material		124-391-733		
242	downspout	Set	1	Prefabricated Building Material		124-391-733		
180	downspout	Set	1	Prefabricated Building Material		124-391-733		
181	Flashing covered edge	Set	1	Prefabricated Building Material		124-391-733		

Utilized

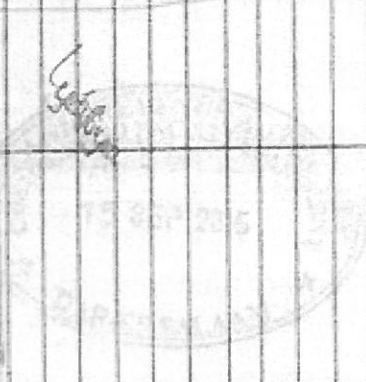


182	ridge tile	Set	1	Prefabricated Building Material		124-391-733	
183	Saddle buckle	Set	1	Prefabricated Building Material		124-391-733	
184	Protection accessories	Set	1	Prefabricated Building Material		124-391-733	
185	sandwich panel sliding door	Set	1	Prefabricated Building Material		124-391-733	
187	EPS sandwich panel swing door	Set	1	Prefabricated Building Material		124-391-733	
188	door edging	Set	1	Prefabricated Building Material		124-391-733	
189	High strength bolt	Set	1	Prefabricated Building Material		124-391-733	
190	High strength bolt	Set	1	Prefabricated Building Material		124-391-733	
191	Common bolt	Set	1	Prefabricated Building Material		124-391-733	
192	Nut	Set	1	Prefabricated Building Material		124-391-733	
193	Nut	Set	1	Prefabricated Building Material		124-391-733	
194	Turn buckle	Set	1	Prefabricated Building Material		124-391-733	
195	Connection pos	Set	1	Prefabricated Building Material		124-391-733	
M	ELECTRICAL SYSTEM FOR WORKSHOP	Lot			17,464.13		
196	Distribution box	set	1	Electrical system for building		124-391-733	
197	Distribution box	set	1	Electrical system for building		124-391-733	
198	Distribution box	set	1	Electrical system for building		124-391-733	
199	Distribution box	set	1	Electrical system for building		124-391-733	
200	Molded case circuit breaker	set	1	Electrical system for building		124-391-733	
201	circuit breaker	set	1	Electrical system for building		124-391-733	
202	circuit breaker	set	1	Electrical system for building		124-391-733	
203	circuit breaker	set	1	Electrical system for building		124-391-733	

17,464.13
Handwritten signature
 17,464.13

204	circuit breaker	set	1	Electrical system for building	124-391-733		
205	residual-current circuit breaker	set	1	Electrical system for building	124-391-733		
206	lamp	set	1	Electrical system for building	124-391-733		
207	food light lamp	set	1	Electrical system for building	124-391-733		
208	High ceiling lamp	set	1	Electrical system for building	124-391-733		
209	electrical control box	pcs	1	Electrical system for building	124-391-733		
210	Copper wiring cap	pcs	1	Electrical system for building	124-391-733		
211	Line pressing pliers	pcs	1	Electrical system for building	124-391-733		
212	iron chain	set	1	Electrical system for building	124-391-733		
213	single conductor	set	1	Electrical system for building	124-391-733		
214	single conductor	set	1	Electrical system for building	124-391-733		
215	single conductor	set	1	Electrical system for building	124-391-733		
216	single conductor	set	1	Electrical system for building	124-391-733		
217	single conductor	set	1	Electrical system for building	124-391-733		
218	single conductor	set	1	Electrical system for building	124-391-733		
219	single conductor	set	1	Electrical system for building	124-391-733		
220	Sheath line	set	1	Electrical system for building	124-391-733		
221	trunking	set	1	Electrical system for building	124-391-733		
222	trunking	set	1	Electrical system for building	124-391-733		
223	Threaded pipe	set	1	Electrical system for building	124-391-733		
224	PVC pipes	set	1	Electrical system for building	124-391-733		
225	PVC pipes	set	1	Electrical system for building	124-391-733		
226	Cable tray	set	1	Electrical system for building	124-391-733		
227	Cable bridge 4 cross	set	1	Electrical system for building	124-391-733		
228	Cable tray stand cross	set	1	Electrical system for building	124-391-733		
229	Cable tray hinge box	set	1	Electrical system for building	124-391-733		
230	screw rod	set	1	Electrical system for building	124-391-733		
231	Steel wire rope	set	1	Electrical system for building	124-391-733		
232	tie	set	1	Electrical system for building	124-391-733		
233	Electrical tape	set	1	Electrical system for building	124-391-733		
234	accessories	set	1	Electrical system for building	124-391-733		
N	OTHERS						
235	Factory machines for upgrade	set	1	equipment	200,000.00	124-391-733	151 utilized

Processed locally



236	Factory Generator 400/500KVA	pcs	2	equipment		200,000.00	124-391-733		NOT utilized
237	Prefabricated Staff Housing materials	set	5	Buildings		250,000.00	124-391-733		NOT utilized
238	Operations Vehicles	pcs	4	motor vehicle	<i>Specs</i>	200,000.00	124-391-733		NOT utilized
239	Operations Trucks (10 tons)	pcs	1	motor vehicle	<i>light truck</i>	200,000.00	124-391-733		NOT utilized
240	Cargo trucks (semi-trailer)	pcs	2	motor vehicle		300,000.00	124-391-733		
241	Management vehicles	pcs	4	motor vehicle	<i>specify</i>	200,000.00			NOT utilized
242	Weighing scale + fork lift	set	3	equipment		80,000.00	124-391-733		NOT utilized
243	Tractors & Trailers	pcs	1	motor vehicle		100,000.00	124-391-733		NOT utilized
244	Office chairs, tables, cabinets & other facilities	set	1	Furniture		35,000.00	124-391-733		
245	Computers	pcs	20	equipment		30,000.00	124-391-733		
246	Safe	pcs	2	equipment		10,000.00	124-391-733		
247	Premise security systems	set	1	equipment		50,000.00	124-391-733		NOT utilized
248	Heat Conduction Oil	Tons	5	Industrial oil		20,000.00	124-391-733		NOT utilized
249	Chemicals for refinery	sets	10	Industrial chemicals		50,000.00	124-391-733		NOT utilized
FREIGHT & INSURANCE									
250	Freight & Insurance for machines and equipments	set	1			14,150.00	124-391-733		<i>Used</i>
251	Freight & Insurance for prefab Building materials	set	1			9,436.00	124-391-733		
Total						2,392,044.82			