



TANZANIA INVESTMENT CENTRE

REGISTRATION FORM FOR CERTIFICATE OF INCENTIVES

(Tanzania Investment Act 1997, Section 17 and 18,
and the Investment Regulations: Regulation 42, Government Notice
No. 318A of 2002)

Tanzania Investment Centre
9A & B Shaaban Robert Street
P. O. Box 938

DAR ES SALAAM

Tel. 2116328

Fax. 2118253

e-mail: information@tic.co.tz

Website: www.tic.co.tz

(Please fill the form in duplicate)

THE UNITED REPUBLIC OF TANZANIA

THE TANZANIA INVESTMENT ACT
(No. 26 of 1997)

APPLICATION FOR REGISTRATION
(Made under Regulation 42)

To: The Executive Director
Tanzania Investment Centre
P. O. Box 938
DAR ES SALAAM
Tanzania

1. I/We KEMI ADVOCATES
(~~director/directors~~/agent of ANIAGEN EAST AFRICA LIMITED
(name of business enterprise) apply for registration of
under Section 17 of the Act and Part IV of the Investment Regulations, 2002.

2. The registered office of the company will be situated at FARM NO. 2
OL MOLOG, SIHA DISTRICT, KILIMANJARO

Copies of the following documents are attached to this application:

- (i) The Memorandum and Articles of Association/or partnership agreement
- (ii) Certificate of Incorporation/Registration
- (iii) A copy of the Project Profile or Feasibility Study showing the implementation period, programme of implementation and operative date
- (iv) Evidence of financing and evidence of land ownership for the project

3. The Head Office of the Company will be situated at ARUSHA, NSSF MAPAO HOUSE, 6TH FLOOR c/o KEMI ADVOCATES, P. O. BOX 534 ARUSHA, PLOT NO. 1, OLD MOSHI RD.

4. The Principal Officers of the Company are

(1) THOMAS ALAN EXLEY (2) STEPHEN ROBERT MCPHILLIPS
(3) RICHARD ARTHUR STUART KEELEY (4) JACK MALCOLM SEARLE

5. Auditors of the Company are N/A

6. The authorized share capital of the Company is Tshs./US\$ 1,000,000/= DIVIDED
INTO ONE HUNDRED (100) SHARES OF TANZANIA SHILLINGS
TEN THOUSANDS (10,000) EACH

7. The intended capital investment of the Company in terms of Section 2(2) of the Act is Tshs./US\$ 13,000,000 (THIRTEEN MILLION DOLLARS)
8. The month and day of the financial year end is 30 JUNE

Note: *failure to provide all the required information will result in the return of the application by the Centre.*

I/We enclose a cheque/cash made payable to the **Tanzania Investment Centre** for Tshs./US\$ Being the Registration Fees. *In the event this application is unsuccessful we understand that this fee will not be refunded.*

I, KESTER LYAQU (KEMI ADVOCATE) of Post Office Number 534

ARUSHA do solemnly and sincerely declare that I am a ~~director~~/duly

authorized agent of AVIAGEN EAST AFRICA LIMITED

AND that all the requirements of the Tanzania Investment Act, 1997 in respect of matters precedent to the registration of the business enterprise under the Act and incidental thereto have been complied with, **AND** I make this solemn declaration conscientiously believing the same to be true.

Declared at Dar es Salaam }
 The 14 day of FEBRUARY 2009 }

.....
 Applicant

Before me:



[Signature]
 Commissioner for Oaths

APPLICATION SUMMARY

Company Name: AVIAGEN EAST AFRICA LIMITED

COI Number: Status:

COI Date:

Post Box: 534

Town: ARUSHA

Sector: AGRICULTURE

Sub-Sector: POULTRY FARMING

Investment Financing Plan in Million US\$/Tshs.

Foreign Equity	Local Equity	Foreign Loan	Local Loan
USD 13,000,000	NIL	NIL	NIL

Project Objectives: To ESTABLISH A POULTRY FARMING PROJECT

Capacity: Pcs 330,961 PER ANNUM

Employment: Foreign: 05 Local: 95 Total: 100

Implementation Period: JULY 2020 - JUNE 2025

Project Location

FARM
Site/Plot/Block No.: 2

Street: OL MOLOG District: SIHA Region: KILIMANSARO
(Attach sketch map showing project location)

Shareholders	Nationality	%
① AVIAGEN EUROPEAN HOLDINGS LIMITED	BRITISH	52%
② TANBREED LIMITED	MAURITIUS	24%
③ COUNTRY BIRD HOLDINGS LIMITED	SOUTH AFRICAN	24%
.....
.....

Investment Breakdown	US\$/Tshs.M
Land/Building	US\$ 10,450,000
Plant	US\$ 1,500,000
Vehicles	US\$ 350,000
Furniture & Fittings	US\$ 100,000
Pre-expenses	US\$ 100,000
Others	N/A
Working Capital	US\$ 500,000
TOTAL	US\$ 13,000,000

Contact Details:

Name: KESTER LYARUU Title: COMPANY SECRETARY/ADVOCATE
 Telephone: 0713 336936 Fax:
 Email: kester.lyaruu@kemiadvocates.co.Ke

OL MOLOG

Moshi District

Scale 1:25,000

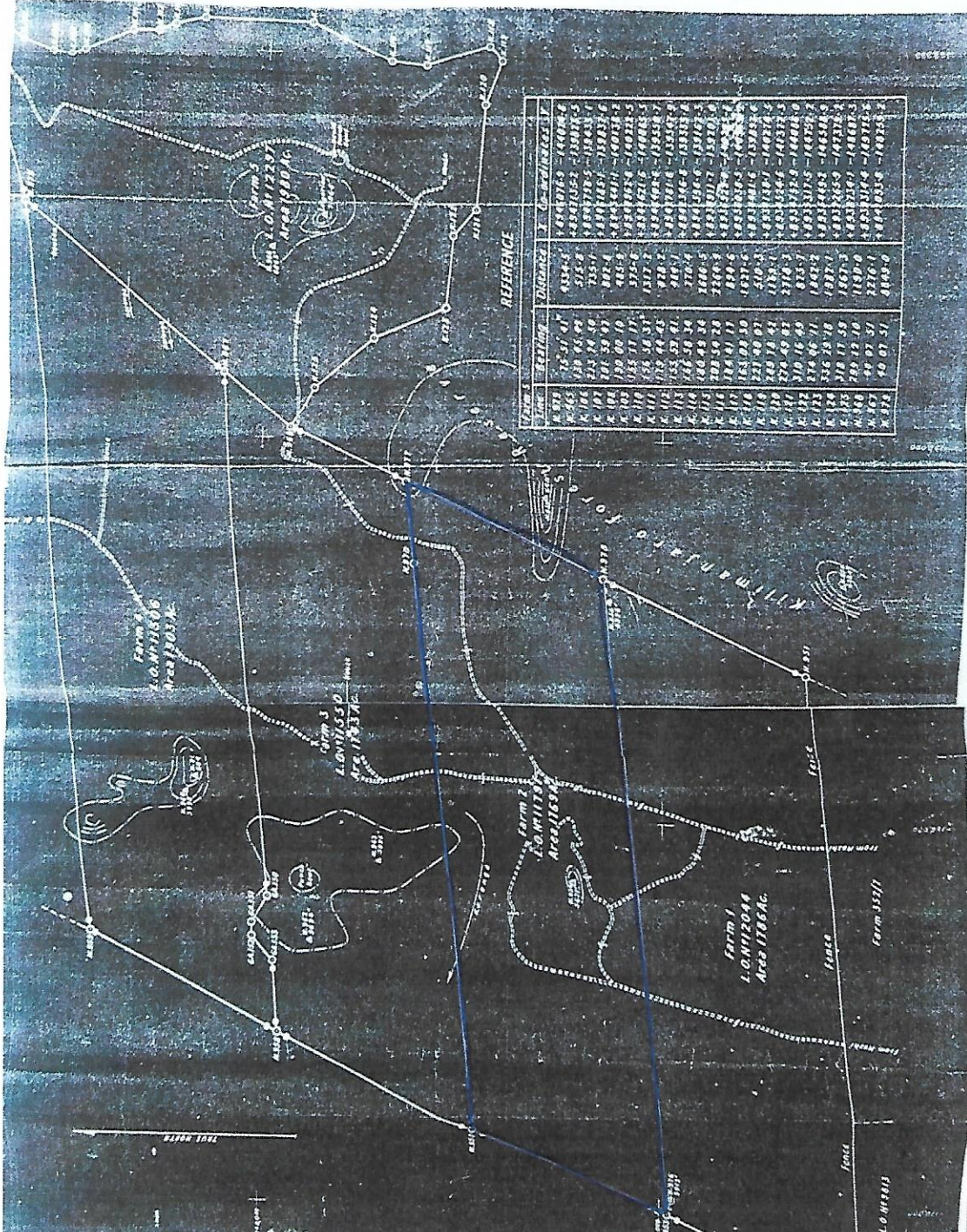
REFERENCE

Point	Reading	Distance	L.O. No.	Area
K. 101	101 31 41	4354.5	17825	17825.0
K. 102	102 31 41	4354.5	17825	17825.0
K. 103	103 31 41	4354.5	17825	17825.0
K. 104	104 31 41	4354.5	17825	17825.0
K. 105	105 31 41	4354.5	17825	17825.0
K. 106	106 31 41	4354.5	17825	17825.0
K. 107	107 31 41	4354.5	17825	17825.0
K. 108	108 31 41	4354.5	17825	17825.0
K. 109	109 31 41	4354.5	17825	17825.0
K. 110	110 31 41	4354.5	17825	17825.0
K. 111	111 31 41	4354.5	17825	17825.0
K. 112	112 31 41	4354.5	17825	17825.0
K. 113	113 31 41	4354.5	17825	17825.0
K. 114	114 31 41	4354.5	17825	17825.0
K. 115	115 31 41	4354.5	17825	17825.0
K. 116	116 31 41	4354.5	17825	17825.0
K. 117	117 31 41	4354.5	17825	17825.0
K. 118	118 31 41	4354.5	17825	17825.0
K. 119	119 31 41	4354.5	17825	17825.0
K. 120	120 31 41	4354.5	17825	17825.0
K. 121	121 31 41	4354.5	17825	17825.0
K. 122	122 31 41	4354.5	17825	17825.0
K. 123	123 31 41	4354.5	17825	17825.0
K. 124	124 31 41	4354.5	17825	17825.0
K. 125	125 31 41	4354.5	17825	17825.0
K. 126	126 31 41	4354.5	17825	17825.0
K. 127	127 31 41	4354.5	17825	17825.0
K. 128	128 31 41	4354.5	17825	17825.0
K. 129	129 31 41	4354.5	17825	17825.0
K. 130	130 31 41	4354.5	17825	17825.0
K. 131	131 31 41	4354.5	17825	17825.0
K. 132	132 31 41	4354.5	17825	17825.0
K. 133	133 31 41	4354.5	17825	17825.0
K. 134	134 31 41	4354.5	17825	17825.0
K. 135	135 31 41	4354.5	17825	17825.0
K. 136	136 31 41	4354.5	17825	17825.0
K. 137	137 31 41	4354.5	17825	17825.0
K. 138	138 31 41	4354.5	17825	17825.0
K. 139	139 31 41	4354.5	17825	17825.0
K. 140	140 31 41	4354.5	17825	17825.0
K. 141	141 31 41	4354.5	17825	17825.0
K. 142	142 31 41	4354.5	17825	17825.0
K. 143	143 31 41	4354.5	17825	17825.0
K. 144	144 31 41	4354.5	17825	17825.0
K. 145	145 31 41	4354.5	17825	17825.0
K. 146	146 31 41	4354.5	17825	17825.0
K. 147	147 31 41	4354.5	17825	17825.0
K. 148	148 31 41	4354.5	17825	17825.0
K. 149	149 31 41	4354.5	17825	17825.0
K. 150	150 31 41	4354.5	17825	17825.0

General Note: When used for line points

Note: True distances are shown. To obtain distances consistent with coordinates, multiply true distances by 0.99983.

Handwritten signature
 Date: 1954
 Scale: 1:25,000



REFERENCE

Point	Reading	Distance	L.O. No.	Area
K. 101	101 31 41	4354.5	17825	17825.0
K. 102	102 31 41	4354.5	17825	17825.0
K. 103	103 31 41	4354.5	17825	17825.0
K. 104	104 31 41	4354.5	17825	17825.0
K. 105	105 31 41	4354.5	17825	17825.0
K. 106	106 31 41	4354.5	17825	17825.0
K. 107	107 31 41	4354.5	17825	17825.0
K. 108	108 31 41	4354.5	17825	17825.0
K. 109	109 31 41	4354.5	17825	17825.0
K. 110	110 31 41	4354.5	17825	17825.0
K. 111	111 31 41	4354.5	17825	17825.0
K. 112	112 31 41	4354.5	17825	17825.0
K. 113	113 31 41	4354.5	17825	17825.0
K. 114	114 31 41	4354.5	17825	17825.0
K. 115	115 31 41	4354.5	17825	17825.0
K. 116	116 31 41	4354.5	17825	17825.0
K. 117	117 31 41	4354.5	17825	17825.0
K. 118	118 31 41	4354.5	17825	17825.0
K. 119	119 31 41	4354.5	17825	17825.0
K. 120	120 31 41	4354.5	17825	17825.0
K. 121	121 31 41	4354.5	17825	17825.0
K. 122	122 31 41	4354.5	17825	17825.0
K. 123	123 31 41	4354.5	17825	17825.0
K. 124	124 31 41	4354.5	17825	17825.0
K. 125	125 31 41	4354.5	17825	17825.0
K. 126	126 31 41	4354.5	17825	17825.0
K. 127	127 31 41	4354.5	17825	17825.0
K. 128	128 31 41	4354.5	17825	17825.0
K. 129	129 31 41	4354.5	17825	17825.0
K. 130	130 31 41	4354.5	17825	17825.0
K. 131	131 31 41	4354.5	17825	17825.0
K. 132	132 31 41	4354.5	17825	17825.0
K. 133	133 31 41	4354.5	17825	17825.0
K. 134	134 31 41	4354.5	17825	17825.0
K. 135	135 31 41	4354.5	17825	17825.0
K. 136	136 31 41	4354.5	17825	17825.0
K. 137	137 31 41	4354.5	17825	17825.0
K. 138	138 31 41	4354.5	17825	17825.0
K. 139	139 31 41	4354.5	17825	17825.0
K. 140	140 31 41	4354.5	17825	17825.0
K. 141	141 31 41	4354.5	17825	17825.0
K. 142	142 31 41	4354.5	17825	17825.0
K. 143	143 31 41	4354.5	17825	17825.0
K. 144	144 31 41	4354.5	17825	17825.0
K. 145	145 31 41	4354.5	17825	17825.0
K. 146	146 31 41	4354.5	17825	17825.0
K. 147	147 31 41	4354.5	17825	17825.0
K. 148	148 31 41	4354.5	17825	17825.0
K. 149	149 31 41	4354.5	17825	17825.0
K. 150	150 31 41	4354.5	17825	17825.0