



TAISHAN

TAISHAN TECHNOLOGY (T) LTD

BUSINESS PLAN

***Integrated Roofing, Building Materials &
Construction Equipment Manufacturing
Complex***

Table of Contents

1. Introduction	3
2. Executive Summary	4
3. Scope of production – Roofing & Building Material	5- 6
4. Management & Governance Framework	7- 9
5. Market Analysis	10 - 11
6. Production process & Technology	12 - 14
7. Financial Program	15 - 18
8. Employment & Local Economic Impact	19 - 20
9. Conclusion	21

CHAPTER I

Introduction

Taishan Technology (T) Limited, a duly registered Tanzanian private limited liability company (BRELA Registration No. 144239938, dated 12th October 2020), was founded with a clear mission: to redefine the standards of industrial manufacturing in Tanzania. Initially established to produce high-quality steel roofing sheets, the company has since evolved into a forward-looking enterprise determined to shape the future of construction supply on the continent.

The present investment marks a decisive step in this journey. At Plot No. 18 in Mwanza, Taishan Technology is embarking on the development of a world-class manufacturing complex—an integrated hub for building materials and construction equipment. This is not a conventional industrial plant; it is a flagship project designed to position Mwanza as a new epicenter of industrial excellence, technology transfer, and regional trade.

By introducing advanced production systems, fostering innovation, and nurturing skilled employment, the facility will dramatically reduce reliance on imported materials while stimulating the local economy. More importantly, it will create a resilient foundation for sustainable growth, ensuring that Mwanza stands as a beacon of modern industrialization aligned with Tanzania's long-term development agenda.

CHAPTER II

Executive Summary

Taishan Technology (T) Limited, a duly registered Tanzanian company, is embarking on a flagship investment that will redefine the industrial landscape of Mwanza and beyond. At Plot No. 18, the Company will establish a fully integrated, state-of-the-art manufacturing complex designed to set new standards in the production of building materials and construction equipment.

This transformative facility will combine advanced steel roofing and allied material production with the fabrication and assembly of both light and heavy construction equipment. By fusing cutting-edge technology, sustainable manufacturing processes, and global best practices, Taishan Technology will create a powerful platform that strengthens Tanzania’s construction supply chain and establishes Mwanza as a regional industrial hub.

The project carries a far-reaching economic impact. It will generate substantial employment opportunities, foster local skills development, and ignite ancillary industries across logistics, services, and distribution. By reducing import dependency and improving supply-chain efficiency, the facility will not only meet Tanzania’s growing demand for construction solutions but will also open pathways for regional exports.

At the core of this venture lies a management and technical team of international caliber, equipped with expertise to deliver world-class operations. Supported by a robust governance and quality-control framework, the company will meet and surpass global certification standards, ensuring its products remain competitive both locally and internationally.

This initiative is more than an industrial plant—it is a cornerstone for Tanzania’s industrialization agenda. By situating this investment in Mwanza, a strategic growth corridor, Taishan Technology positions itself as a catalyst for regional economic transformation, technology transfer, and sustainable development, creating enduring value for investors, government, and communities alike.

CHAPTER III

Scope of Production – Roofing & Building Materials

The Mwanza facility is designed to become the **largest and most diversified manufacturing hub for roofing and construction solutions in East Africa**. Its production scope goes far beyond conventional roofing sheets, encompassing a **comprehensive, world-class portfolio** of building materials engineered to meet the demands of modern urbanization, infrastructure development, and mass housing initiatives across the continent.

Roofing & Structural Systems

- **Metal Roofing Systems:** Pre-painted galvanized sheets, corrugated and long-span profiles, concealed-fix systems, standing seam panels, and insulated sandwich panels engineered for durability and aesthetic appeal.
- **Roof Tiles:** Ceramic, concrete, stone-coated steel, and next-generation solar roof tiles that integrate renewable energy into building design.
- **Roof Structure & Accessories:** Steel trusses, purlins, ridge caps, valleys, flashing, gutters, downpipes, skylight panels, and fastening systems—providing complete end-to-end roofing solutions.

Building Envelopes & Finishes

- **Wall & Ceiling Systems:** Modern cladding panels, insulated walls, acoustic panels, and ceiling boards to support energy-efficient, climate-resilient architecture.
- **Insulation & Weatherproofing:** Advanced thermal and acoustic insulation rolls, waterproof membranes, and underlay materials to enhance building performance.
- **Flooring & Paving:** Interlocking paving blocks, precast slabs, and modular flooring systems tailored for rapid infrastructure deployment.
- **Doors & Windows:** Prefabricated steel and composite systems designed for affordable housing, commercial complexes, and institutional projects.

Construction Equipment Division

To complement the building materials portfolio, the project will integrate a **dedicated Construction Equipment Division**, ensuring contractors have access to modern, reliable tools and machinery under one roof:

- **Site Infrastructure Solutions:** Modular scaffolding systems, formwork, shuttering, and pre-engineered containerized site offices.
- **Light & Medium Equipment:** Portable concrete mixers, compactors, power trowels, mini-loaders, and hoists tailored to small and medium contractors.

- **Heavy Construction Equipment (Phase II):** Large-scale formwork systems, mobile cranes, and custom fabrication to serve mega-projects across the region.

Integrated Value Proposition

This diversified production strategy ensures Taishan Technology offers **a one-stop solution for contractors, developers, and governments**, covering the full spectrum of housing, infrastructure, and industrial needs. By merging roofing, building materials, and equipment under a single industrial platform, the Mwanza facility will dramatically **reduce project costs, shorten timelines, and enhance quality standards** across Tanzania and neighboring markets.

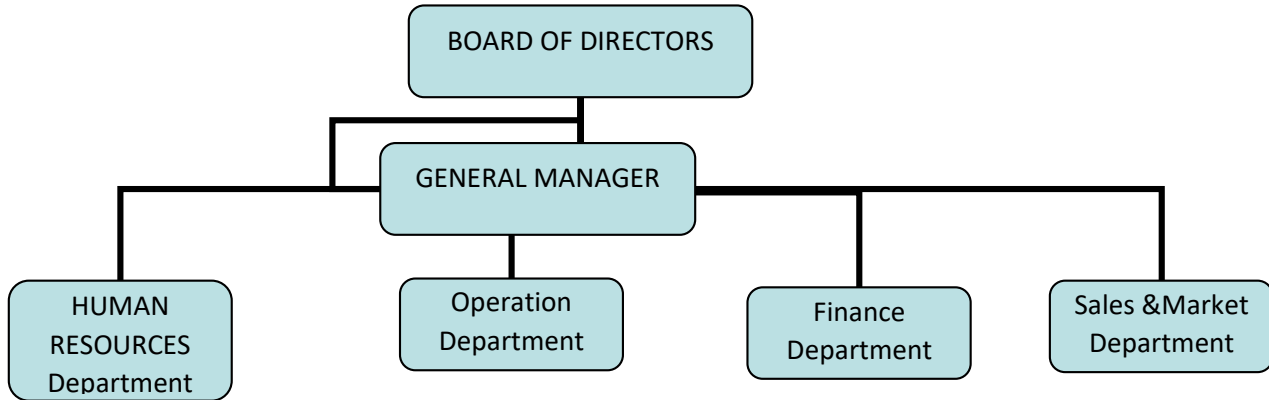
The **vision** is not only to manufacture products but to **redefine the future of African construction**—creating resilient, sustainable, and technologically advanced solutions that match global benchmarks while supporting national development priorities.

CHAPTER IV

MANAGEMENT AND GOVERNANCE FRAMEWORK

4.1 Governance and Organisational Architecture

Chart of Management Structure



Taishan Technology (T) Limited is structured not merely as a single manufacturing entity, but as a **national industrial platform**. Its governance model is designed to combine robust corporate oversight with operational agility, ensuring that the company is aligned with Tanzania’s industrialization agenda while maintaining global competitiveness.

- **Head Office – Dar es Salaam:** Corporate strategy, finance, compliance, investor relations, and government engagement.
- **Flagship Manufacturing Complex – Mwanza (Plot No. 18):** Core production hub and centre of excellence for roofing, building materials, and construction equipment.
- **Regional Operations – Mbeya & Arusha:** After-sales support, regional warehousing, and distribution.
- **National Distribution Hub – Dodoma:** Centralized logistics and a modern showroom to serve as the national nerve-centre for product distribution.

This architecture reflects a **long-term commitment to Tanzania’s industrialization policy**, risk diversification across regions, and the creation of economies of scale.

4.2 Executive Leadership

The company is led by a **diverse, internationally experienced management team**, combining global technical expertise with deep local market knowledge.

- **Mr. Changliang (Andrew) Sun – Director & General Manager**
Graduate in International Economics & Trade, Harbin Institute of Technology. Eight years of experience in advanced colour-steel processing. Provides strategic leadership and oversees Tanzanian operations.
- **Mr. Cheng Yufei – Operations Manager**
Specialist in lean manufacturing and industrial software. Expert in ERP and MES integration for production efficiency.
- **Mr. Shakiri Ally Msangi – Head of Sales & Market Development**
Fifteen years of experience in Tanzania’s construction materials sector. Responsible for market penetration, client relations, and growth strategy.

Together, this leadership team ensures the **fusion of global technology and local insight**, balancing innovation with market relevance.

4.3 Strategic Human Capital Deployment

Taishan Technology (T) Limited recognises that its most valuable asset is its **people**. The workforce strategy is designed to progressively localize technical and leadership roles, creating a **sustainable pipeline of Tanzanian expertise**.

- **Direct Employment:** Over 450 skilled and semi-skilled jobs across production, quality control, logistics, and administration.
- **Indirect Employment:** Thousands more through supply chains, raw-material processors, transporters, service providers, and SMEs.
- **Training Centre:** On-site technical academy to train welders, operators, inspectors, and supervisors to **international certification standards**.
- **Skills Transfer:** Structured partnerships with Tanzanian technical colleges and universities to create an **apprenticeship pipeline**.

Projected Workforce Development

Year Total Staff Foreign Experts Tanzanians % Localisation

1	30	5	25	83%
2	50	7	43	86%
3	80	10	70	90%+

By Year 3, **over 90% of operational roles will be held by Tanzanians**, with foreign experts retained only in high-level knowledge transfer functions.

4.4 Integrated Management & Quality Systems

The company will deploy a **best-in-class Integrated Management System** harmonized with ISO and Tanzanian compulsory certification frameworks. This system ensures **regulatory compliance, operational transparency, and investor confidence**.

Key features include:

- **Quality & Operational Manuals** covering procurement, training, production, inspection, customer feedback, and continuous improvement.
- **Performance Standards** for every role, embedding accountability and measurable KPIs.
- **Digital Systems:** Full integration of ERP (Enterprise Resource Planning) and MES (Manufacturing Execution Systems) for real-time monitoring of operations.
- **Safety & Sustainability Protocols:** Adherence to international environmental, health, and occupational safety standards.

This system transforms governance from a compliance function into a **value creation mechanism**, driving efficiency, accountability, and profitability.

4.5 Workforce Development & Training Programs

Taishan Technology is committed to building **world-class human capital in Tanzania** through structured training pathways:

- **Elementary Training (10 days):** Corporate orientation, discipline, safety, and environmental protection protocols.
- **Intermediate Training (3–6 months):** Role-specific technical training for operators, inspectors, and supervisors.
- **Advanced Training (12 months):** Select local staff undergo specialized overseas training in China to master cutting-edge technologies and return as local trainers and department leaders.
- **Management Training:** Continuous professional development for mid- and senior-level managers to ensure strategic execution and leadership succession.

All training outcomes are systematically recorded and linked to **promotion and performance incentives**, ensuring meritocracy and motivation.

4.6 Development Trends & Strategic Outlook

Taishan Technology's governance and management framework is aligned with global industrial trends:

- **Energy Efficiency & Sustainability:** Adoption of eco-friendly technologies and waste recycling to support Tanzania's green industrial agenda.
- **Professionalized, Scaled Production:** Leveraging international best practices to drive industrial efficiency and global competitiveness.
- **High-Speed Growth & Regional Integration:** Positioning Mwanza as a **gateway for regional exports** across the East African Community (EAC) and beyond.

This forward-looking management framework ensures that Taishan Technology (T) Limited will not only deliver **operational excellence** but also serve as a **national industrial champion** aligned with Tanzania's Vision 2025 - 2050 and continental industrialization ambitions.

CHAPTER V

MARKET ANALYSIS

5.1 Market Demand

Tanzania today stands at a pivotal juncture in its development trajectory. With GDP growth consistently outpacing the sub-Saharan average, rapid urbanization, and an intensifying housing and infrastructure drive, the nation is experiencing a structural surge in demand for premium construction inputs. Roofing systems, engineered steel tiles, and high-performance building materials have become indispensable to the country's architectural, commercial, and industrial modernization.

Yet, despite this momentum, **domestic production capacity satisfies less than 60% of national requirements**, leaving marquee projects and institutional developments heavily reliant on imports from Asia and the Middle East. This dependency inflates costs, exposes supply chains to global shocks, and constrains the speed of execution for national priority projects.

For a strategically positioned domestic player, this imbalance is not merely an opportunity—it is a **systemic inefficiency waiting to be unlocked**. Taishan Technology (T) Limited intends to bridge this gap with a technologically advanced, fully integrated manufacturing facility in Mwanza, ensuring Tanzania has access to international-grade products at competitive local price points.

Moreover, demand is not limited to first-time installations. There exists a vast **secondary market for maintenance, refurbishment, and lifecycle support**, all of which remain under-served and fragmented. By orchestrating an integrated value chain—from manufacturing and distribution to after-sales service—Taishan Technology is uniquely positioned to capture disproportionate market share while setting new benchmarks of quality and reliability.

5.2 Regional & Global Opportunity

Tanzania's geographical positioning offers a unique strategic advantage. Mwanza's location, supported by Tanzania's maritime and overland corridors, provides a natural gateway into the **East African Community (EAC)** and broader Central African markets—regions collectively representing over 300 million consumers with rapidly expanding construction sectors.

With the right production scale and distribution architecture, Taishan Technology can expand exports into **Uganda, Rwanda, Burundi, Kenya, the DRC, and Zambia**, consolidating Mwanza as a regional supply hub. Beyond Africa, niche export opportunities exist in select Latin American markets, where annual consumption of steel roofing and construction inputs already exceeds **three million square metres**.

5.3 Market Definition & Competitive Landscape

Our comprehensive investigation underscores that the Tanzanian market is **structurally under-supplied and technologically stagnant**. Existing local manufacturers operate with dated equipment, lacking advanced welding, shaping, and surface-treatment capabilities that define global best practice. This deficit has forced high-profile projects—airports, stadia, industrial parks—to source critical inputs from abroad.

Taishan Technology will disrupt this paradigm by introducing:

- **State-of-the-art processing systems** with high throughput, low resource intensity, and automation-driven productivity.
- **Consistent international-grade quality** delivered at locally competitive prices.
- **Export-compliant production standards**, enabling certification for cross-border and global markets.

This differentiation directly addresses government priorities around **import substitution, industrialization, and job creation**, while appealing to institutional contractors and private developers seeking a dependable, world-class local partner.

5.4 Strategic Positioning

By localizing production in Mwanza and integrating supply-chain efficiency with technological superiority, Taishan Technology will:

- Capture unmet domestic demand and substitute high-cost imports.
- Anchor itself as Tanzania’s benchmark for reliability, quality, and service excellence.
- Unlock export-led growth into regional markets with scalable potential.
- Reinforce national development goals of industrial self-sufficiency and inclusive economic transformation.

CHAPTER VI

PRODUCTION PROCESS

6.1 Strategic Production Philosophy

Our production process has been deliberately architected to embody **precision, scalability, and sustainability**, reflecting the standards of premier global enterprises. Every stage—from sourcing of raw materials to the final delivery of finished goods—is governed by rigorous quality controls, automation, and real-time monitoring systems designed to ensure unmatched consistency and cost efficiency.

6.2 Integrated Value Chain

The process is not a simple linear sequence but an **integrated value chain** with both backward and forward linkages. Exclusive supply agreements with high-grade raw material providers ensure reliability of inputs, while proprietary processing technologies convert those inputs into premium-quality outputs at scale. Each stage creates measurable value, reinforcing Taishan Technology (T) Limited's brand as the **benchmark for quality in East Africa's construction sector**.

6.3 Production Workflow

- **Stage 1 – Input Procurement & Quality Verification**
Long-term contracts with certified suppliers, combined with on-site inspection laboratories, ensure raw materials meet or exceed international standards.
- **Stage 2 – Core Processing & Automation**
Semi-automated production lines integrate **advanced process control (APC) systems** and **AI-driven monitoring** for accuracy, throughput, and efficiency.
- **Stage 3 – Quality Assurance & Compliance**
A multi-tiered quality assurance framework tests and certifies each batch in line with **ISO and global benchmarks**.
- **Stage 4 – Packaging & Logistics Excellence**
Smart packaging technologies (traceability, tamper-proofing) and digitally integrated logistics partners guarantee secure and timely delivery to domestic and regional markets.

6.4 Sustainability & ESG Integration

The production process is aligned with **Environmental, Social, and Governance (ESG) imperatives**. Carbon intensity is reduced through renewable energy integration, water recycling, and advanced waste minimisation. These practices not only lower operational costs but also position the Company as a partner of choice for **impact-oriented investors and global procurement networks**.

6.5 Scalable Infrastructure

Facilities have been designed with **modular scalability**, enabling phased expansion without disruption. Capacity can be doubled with minimal capital expenditure, accelerating time-to-market and revenue generation while maintaining full operational integrity.

6.6 Technology Selection Principles

Every technology decision has been evaluated for **quality, reliability, adaptability, and efficiency** within Tanzania's operating environment. The guiding principles are:

- **Quality Enhancement** → adoption of equipment that guarantees international-grade performance.
- **Process Integration** → ensuring smooth flow and seamless digital monitoring across the value chain.
- **Safety & Reliability** → prioritising field-proven, workforce-friendly processes.
- **Operational Simplicity** → selecting systems that are easy to train, operate, and localise for Tanzanian expertise.

6.7 Technical Scheme and Competitive Advantages

The plant deploys **integrated welding-and-forming technology** that combines high automation, low resource intensity, and superior labour productivity. Its competitive edge includes:

- **High Technical Content & Automation** → precision and durability with lower costs.
- **Process Stability** → consistent product quality and maximum resource utilisation.
- **Adaptability to Local Inputs** → calibrated for Tanzanian raw materials to reduce import dependency.
- **Economic Rationality** → optimised equipment costs through hybrid local and international sourcing.
- **Flexibility of Output** → rapid switch between multiple specifications to respond to dynamic market demand.

6.8 Product Integration into the Production Cycle

The facility is designed to deliver a **comprehensive portfolio of roofing and building solutions**, with each product family routed through **digitally optimised, specialised lines**:

- **Metal Roofing Systems** → processed through automated forming machines and advanced surface-treatment units, ensuring strength, precision, and architectural appeal.
- **Roof Tiles (ceramic, composite, stone-coated, and solar-enabled)** → produced using hybrid kilning and press-forming technologies, with protective coatings for longevity.
- **Structural Components (trusses, purlins, frames)** → assembled using robotic welding and shaping technologies, ensuring high integrity and durability.

- **Insulation & Weatherproofing** → manufactured via lamination and rolling systems meeting global thermal and acoustic performance standards.
- **Wall, Ceiling & Flooring Systems** → precast slabs, cladding, and acoustic panels are fabricated under modular lines, supporting both mass housing and high-end projects.
- **Construction Equipment** → scaffolding, mixers, compactors, and mobile units are produced in a dedicated division, offering contractors a **one-stop engineering solution**.

By **integrating product families into a unified production ecosystem**, Taishan Technology (T) Limited positions Mwanza as **East Africa's advanced manufacturing hub** for world-class construction materials and equipment.

CHAPTER VII

FINANCIAL PROGRAM

7.1 Financial Management & Governance

Taishan Technology (T) Limited maintains a **world-class financial management system**, led by a highly experienced finance team. Our accounting framework is fully segmented, rigorous, and aligned with **ISO 9000 quality standards**, ensuring meticulous supervision of:

- Assets and capital allocation
- Contractual obligations
- Operational financial flows

To support our Tanzanian manufacturing facility, we will implement a **standardized, fully compliant accounting system** under local regulatory frameworks, encompassing:

- A **structured chart of accounts** tailored to operational segments
- Systematic bookkeeping and real-time transaction recording
- Comprehensive **annual financial reporting**, independently audited by certified accountants

This ensures transparency, operational efficiency, and full regulatory compliance—critical factors for institutional and international investors.

7.2 Source of Funds, Capital Allocation, and Payoff Period

The entirety of the initial capital is sourced from the **principal investor, Mr. Changliang Sun**. The **total investment of TZS 2,000,000,000** is strategically allocated:

Description	Amount (TZS)
Factory building lease & equipment procurement (including machinery, installation, trial operations)	800 million
Production preparation, working capital, employee recruitment, contingencies	1.2 billion
Total Investment	2.0 billion

Payoff period: 5 years, reflecting a **conservative, high-yield investment model**.

Financial Allocation (USD):

Description	Amount (USD)
Land and Building	540,000

Description	Amount (USD)
Plant and Machinery	600,000
Vehicles	150,000
Furniture & Fittings	80,000
Pre-operational Expenses	30,000
Construction Equipment & Tools	100,000
Working Capital	500,000
Total	2,000,000

7.3 Revenue Streams and Product Segmentation

Taishan Technology operates **three distinct product lines**, designed to capture the full spectrum of the Tanzanian market:

1. **Jamii Construction Equipment & Tools** → Low-income segment
2. **Daima Construction Equipment & Tools** → Middle- to high-income segment
3. **Royal Construction Equipment & Tools** → Premium, top-tier clients

Projected Market Share (Year 1):

- Jamii: 60% of total sales
- Daima: 30% of total sales
- Royal: 10% of total sales

Market Penetration Strategy:

- Tanzania imports **60,000 tons** of pre-painted steel coils annually. Of these, 30,000 tons serve the low-income segment (Jamii). Target: **10% capture in year one** (3,500 tons), growing **25% annually** to 8,545 tons by year five (~20% market share).
- Daima & Royal combined will sell 2,000 tons in year one (~6% market share), growing 20% annually to reach 4,200 tons by year five (~10% market share).

7.4 Financial Projection (USD ‘000)

Estimated Sales, Costs, and Profitability:

Sn Item	2025	2026	2027	2028	2029
1 Qty (Jamii, tons)	3,500	4,375	5,468	6,836	8,545

Sn Item	2025	2026	2027	2028	2029
2 Qty (Daima & Royal, tons)	2,000	2,400	2,880	3,456	4,148
3 Total Qty (tons)	5,500	6,775	8,348	10,292	12,693
4 Price per ton (USD)	1,200	1,200	1,200	1,200	1,200
5 Sales Amount	6,600	8,130	10,018	12,350	15,232
6 Total Cost	6,270	7,724	9,517	11,733	14,470
7 Profit Before Tax	330	406	501	617	762
8 Income Tax	99	121	150	185	229

7.5 Cash Flow Statement (USD '000)

Item	2025	2026	2027	2028	2029
Investment	800	240	264	290	319
Cash Inflow	6,600	8,130	10,018	12,350	15,232
Purchase Payments	5,280	6,504	8,014	9,880	–
Salaries	330	407	501	618	762
Operational Expenses	660	813	1,002	1,235	1,523
Taxes	99	122	150	185	228
Fixed Asset Investment	400	120	132	145	160
Net Cash Surplus	330	407	501	618	762

7.6 Liabilities & Assets (USD '000)

Item	2025	2026	2027	2028	2029
Current Assets	800	840	882	926	972
Fixed Assets	400	520	652	797	957
Accumulated Depreciation	80	104	130	159	191
Equity	400	420	441	463	486
Liability	80	84	88	93	97

Item	2025	2026	2027	2028	2029
Total Assets	640	752	874	1,008	1,155

7.7 Profit & Loss Statement (USD ‘000)

Item	2025	2026	2027	2028	2029
Total Sales	6,600	8,130	10,018	12,350	15,232
Cost of Sales	6,270	7,724	9,517	11,733	14,470
Initial Inventory	660	813	1,002	1,235	1,523
Purchases	627	772	952	1,173	1,447
Ending Inventory	550	678	835	1,029	1,269
Total Investment	800	240	264	290	319
Productive Salaries	330	407	501	618	762
Operating Expenses	660	813	1,002	1,235	1,523
Management Salaries	132	163	200	247	305
Management Costs	330	407	501	618	762
Other Expenses	33	41	50	62	76
Operating Income	330	407	501	618	762
Net Profit (After Tax)	99	122	150	185	228

7.8 Key Financial Highlights for Investors

- **Payoff Period:** 5 years with conservative projections and steady growth.
- **Robust Cash Flows:** Annual net surplus grows from **USD 330k to 762k** within five years.
- **High Yield:** Year five **ROE** projected above 45%, offering attractive returns for investors.
- **Market Capture:** Achieves **20% market share in low-income segment** and **10% in premium segments**, with scope for expansion regionally.
- **Comprehensive Financial Governance:** ISO-aligned, fully auditable, and fully transparent.

CHAPTER VIII

Employment & Local Economic Impact

8.1 Employment Creation

The establishment of Taishan Technology (T) Limited's industrial complex in Mwanza is not merely an investment in infrastructure; it is an investment in people. The project will directly employ approximately **500 Tanzanians**, spanning skilled engineers, semi-skilled operators, logistics personnel, quality control experts, and administrative staff.

Beyond direct employment, the multiplier effect is expected to be profound. By engaging local suppliers, transporters, raw material processors, food vendors, and the hospitality sector, the project is projected to generate **over 1,500 indirect jobs** across Mwanza and neighboring regions.

This catalytic impact will infuse significant purchasing power into the local economy, stimulate small and medium-sized enterprises (SMEs), and create a sustainable cycle of wealth generation.

8.2 Human Capital Development & Training

At the heart of Taishan Technology's philosophy lies **knowledge transfer and local capacity building**. The Company will establish an **On-Site Training and Skills Development Centre** designed to uplift Tanzania's industrial workforce to international standards.

Training programs will include:

- **Elementary Training (10–14 days):** Workplace discipline, occupational health & safety, and environmental protection.
- **Intermediate Training (120–180 days):** Specialized technical skills for operators, welders, machine technicians, and quality inspectors.
- **Advanced Technical Training:** Select outstanding staff will receive in-depth overseas training in China to master advanced manufacturing techniques and return as trainers and team leaders.
- **Management Training:** Structured modules to cultivate a new generation of Tanzanian industrial managers, covering operations, leadership, strategic planning, and process efficiency.

Through these initiatives, Taishan Technology aims to rapidly localize technical and managerial expertise, ensuring that Tanzanian professionals not only sustain the factory but also **become industry leaders in their own right**.

8.3 Skills Transfer & Institutional Partnerships

The Company will establish formal partnerships with **local technical colleges and universities** in Mwanza and Dar es Salaam to create apprenticeship pathways. This collaboration will:

- Integrate classroom learning with real-world factory experience.
- Equip graduates with internationally recognized certifications.

- Create a talent pipeline for the wider Tanzanian industrial sector.

Over time, this will elevate Tanzania’s industrial competence and reduce dependency on imported technical expertise.

8.4 Economic Transformation & Regional Impact

The economic impact of this investment extends far beyond factory walls. Mwanza — a city already recognized as a commercial hub — will gain new prominence as a **centre of industrial innovation and construction technology**.

Key impacts include:

- **SME Growth:** Local contractors, service providers, and suppliers will expand in response to steady demand from the factory.
- **Technology Transfer:** Introduction of digitally controlled, energy-efficient machinery not currently available in Tanzania.
- **Import Substitution:** By producing roofing materials and construction equipment domestically, the Company will reduce Tanzania’s reliance on imports, conserving foreign exchange reserves.
- **Regional Export Hub:** Mwanza’s strategic location positions the facility to serve not only Tanzania but also markets in Uganda, Rwanda, Burundi, DRC, Zambia, and Malawi.

The ripple effect is expected to contribute significantly to Tanzania’s GDP, improve regional infrastructure standards, and accelerate the country’s industrialization agenda in line with **Tanzania’s Vision 2025 -2050**.

8.5 Sustainability & Long-Term Prosperity

Employment and economic growth are designed to be **sustainable**. By embedding training, R&D, and continuous technology upgrades, the Company ensures that growth is **compounded year after year**.

Taishan Technology is committed to:

- Promoting **gender inclusion** by encouraging female participation in engineering and technical roles.
- Aligning with **environmental stewardship** through energy-saving production, waste recycling, and eco-conscious building practices.
- Anchoring Mwanza as a **hub of innovation** where Tanzanian talent drives Africa’s next generation of industrialization.

CHAPTER IX

CONCLUSION

The establishment of the Integrated Roofing, Building Materials & Construction Equipment Manufacturing Complex in Mwanza is not merely an industrial investment; it is a strategic transformation of Tanzania's industrial and economic architecture. This project stands at the confluence of **visionary ambition, technological advancement, and sustainable development**, positioning itself as one of the most significant manufacturing ventures in East Africa.

At its core, the project embodies **world-class industrial capacity**. With cutting-edge technology, digitally automated production lines, and environmentally responsible practices, it is designed to deliver unmatched quality and efficiency. The enterprise will not only substitute costly imports but will also create a powerful export platform that positions Tanzania as a regional hub for roofing materials and construction equipment.

The impact of this investment reaches far beyond financial gain. By directly employing hundreds of Tanzanians and indirectly supporting thousands more through supply chains, logistics, and SMEs, the project will inject new purchasing power into Mwanza and the wider economy. Through robust training and skill-transfer programs, it will accelerate **local human capital development**, nurturing a new generation of engineers, technicians, and industry leaders. This is not only a business expansion—it is a **capacity-building initiative** that empowers Tanzanians to drive their own industrial future.

Strategically aligned with the Government of Tanzania's industrialization agenda and the broader aspirations of the East African Community, this project supports national goals of self-reliance, job creation, and sustainable growth. It positions Mwanza as an **epicenter of innovation and productivity**, reinforcing Tanzania's competitive advantage in regional and global markets.

In the broader narrative of East Africa's development, this initiative represents a **landmark opportunity**—a model of how foreign investment, local talent, and advanced technology can converge to create prosperity that is both profitable and socially transformative.

In conclusion, this enterprise is not just a factory, nor merely a business—it is an **economic catalyst**, a **symbol of confidence in Tanzania's future**, and a **premier opportunity for global investors** to align with a project that blends exceptional returns with meaningful impact. The Integrated Complex in Mwanza stands ready to redefine standards, elevate industries, and contribute decisively to the next chapter of Tanzania's and East Africa's economic rise.