

BUSINESS PLAN FOR TRASPORTATION AND LOGISTICS PROJECT

GBP GAS LIMITED

Plot No. 162,349 & 350 Kurasini Area, Temeke District Dar es
Salaam region, Tanzania

1.0 INTRODUCTION

GBP GAS LIMITED is a company incorporated in Tanzania with certificate No. 152222173 dated 8th June 2021 as private limited company under the Tanzanian Companies Act, 2002. GBP GAS LIMITED is engaged in the business of Transportation and Logistics, ICD, import and selling various products etc, GBP GAS LIMITED is currently planning to provide global supply chain solutions providers within the country and in east Africa and SADC region.

1.1 OUR MISSION

To become a leading integrated global logistics and supply chain management company providing business enabling solutions and exceeding customer expectations.

1.2 OUR VISION

To deliver customized and unique logistics solutions globally ensuring time and cost savings for customers in a responsible and sustainable manner.

1.3 OUR VALUES

At GBP GAS LIMITED, we believe the customer comes first; we are focused to ensure customer delight, superior quality of delivery and increased customer profitability.

At GBP GAS LIMITED, at our operations all over the country, we practice an enduring value system based on an open culture, honest and fair

business and personal conduct, earning the confidence and trust of our Associates and Customers.

At GBP GAS LIMITED, we practice transparency with all agencies that we are involved with. At GBP GAS LIMITED, we value the importance of our colleagues, evolving a sense of togetherness and passion to deliver.

OWNERSHIP AND OPERATIONS

1.4 **COMPANY OWNERSHIP AND BOARD OF DIRECTORS**

GBP GAS LIMITED is promoted by two shareholders who are very experienced in transport and logistic business, it is a family company.

Share Holders	% of Share	Nationality
Badar Seif Sood P. O. Box 3728, DAR ES SALAAM	90	Tanzania
GBP Tanzania Limited P. O. Box 3728, DARES SALAAM	10	Tanzania

1.6 **PROJECT LOCATION**

Registered office of the GBP GAS LIMITED is located at **Plot No. 162,349 & 350 Kurasini Area, Temeke District Dar es Salaam region, Tanzania**

1.7 **FLEET SIZE**

GBP GAS LIMITED is planning to purchase **400** trucks and trailers. With capacity of carrying **60** tons truck and trailer, one truck conducting **3** trips per month operating for ten months per year, carrying **1,800** tons per year

GBP GAS LIMITED **management** intends to continue building its fleet to a level of –

- 200 trucks by 2022
- 100 trucks by 2023
- 100 trucks by 2024

Required number of trailers will also be added to existing fleet in order to cater to additional requirements in line with truck additions.

1.8 PROJECT ESTIMATED REVENUE

The company has estimated that the project revenue to be US\$ 5000 per trip and one truck will conduct 3 trip per month and 30 trips per year

1.9 PROJECT OPERATING COST

The company has estimated that the project operating cost and other cost to be 65% of the total annual revenue

1.10 PROJECT FINANCING

The company has estimated that the project will be financed by long term loan amounting to US\$77,949,900 with interest rate of 6% repaid within 7 years and remaining US\$ 8,661,100 will be shareholders contribution

1.11 PROJECT COST

The project has budgeted to cost the followings:

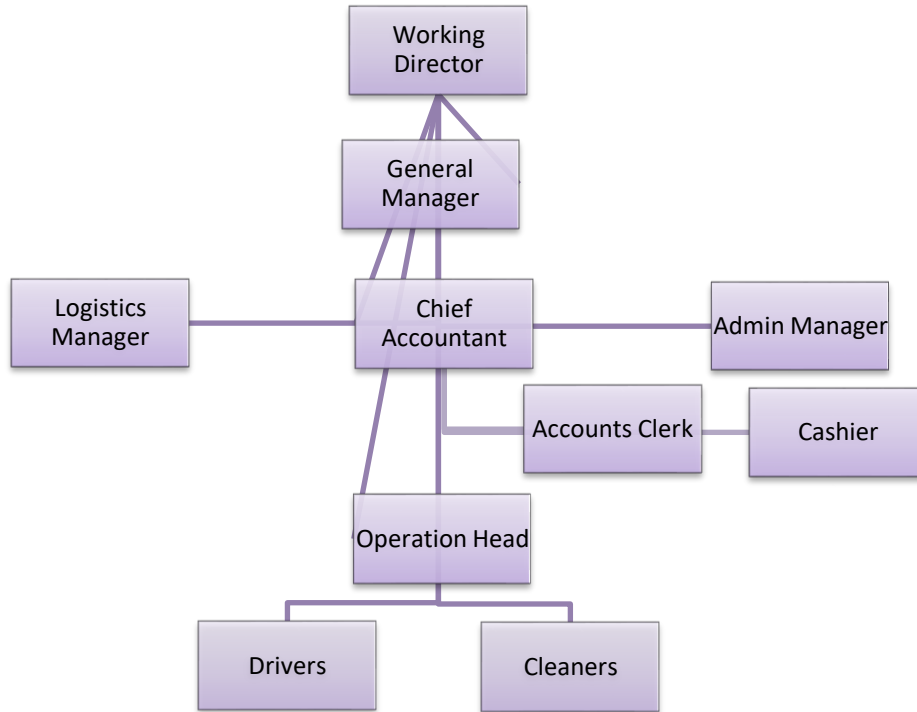
PARTICULAR	US\$
Land and Buildings	400,000.00
Machinery & Equipment	200,000.00
Motor Vehicles	80,000,000.00
Furniture & Fixtures	2,000.00
Pre exp	5,000.00
Others	4,000.00
Working Capital	6,000,000.00
TOTAL	86,611,000.00

2.0 ORGANISATION FLOW CHART

GBP GAS LIMITED management is headed by Badar Seif Sood working as Managing Director. Core management team comprises of 1 General Manager, 1 HR and Admin Manager, 1 Logistics Manager, 1 Chief Accountant and 2 Junior accounting clerks. Operational team headed by 3 operational managers and includes drivers and cleaners.

GBP GAS LIMITED
P. O. Box 3728, DARES SALAAM

The organisation chart of the GBP GAS LIMITED is presented herein below:



Employees Distribution Summary

Employment	Foreign	Local	Total
Women	2	15	17
Men	8	415	423
TOTAL	10	430	440

3.0 TANZANIA TRANSPORT OVER VIEW

The Tanzanian transport sector comprises surface transport (including roads, railways), inland waterways (lakes and rivers), air transport, and sea transport.

Tanzania's transport sector contributed 8.1% to the country's real GDP in 2018 with USD 3.8 billion, compared to USD 2.8 billion in 2014, representing an increase of 33%. Main growth drivers include the increase in the number of passengers carried and freight handled through road transport.

According to Tanzania's 2025 Development Vision, investments in infrastructure, particularly in the development of the road network, are the Government's top priority. The World Bank (WB) and the African Development Bank (AfDB) support Tanzania in achieving its infrastructure development goals by providing grants and credits for projects.

Tanzania Road Transport

Road transport is the most widely used form of transport in Tanzania, carrying over 90% of the passengers and 75% of the freight traffic in the country. The road network in Tanzania currently comprises 86,472 kilometers of roads, of which 12,786 kilometers are trunk roads, 21,105

kilometers are regional roads and the remaining 52,581 kilometers are district, urban and feeder roads.

Tanzania's Ministry of Works, Transport, and Communication through the Tanzania National Roads Agency (TANROADS) is managing the national road network of about 33,891 kilometers, comprising 12,786 kilometers of trunk and 21,105 kilometers of regional roads.

The remaining network of about 53,460 kilometers of urban, district and feeder roads are under the responsibility of the Prime Minister's Office Regional Administration and Local Government (PMO-RALG).

Tanzania Rail Transport

Railway transport is the second most important mode of transport after road and critical for long distance freight along the main transport corridors in Tanzania. Tanzania has a total of 3,676 kilometers of railway lines operated by two railway systems, Tanzania Railways Corporation (TRC) and Tanzania – Zambia Railways (TAZARA).

The mainline of TRC comprises the central corridor between the port of Dar es Salaam in the east, linking central and western areas of the country and terminating at Kigoma on Lake Tanganyika in the west. The TAZARA line is 1,860 kilometers in length, of which 975 kilometers is in Tanzania and 885 kilometers in Zambia.

Tanzania Air Transport

The total number of air passengers in Tanzania reached 6.2 million in 2019, compared to 5.2 million in 2015, representing an increase of 18%. Currently (2020), there are 19 airline operators in Tanzania, including some of the leading international air carriers such as British Airways, KLM, Qatar Airways, and SWISS.

There are 58 airports in Tanzania and more than 300 private airstrips owned by mining companies and tour operators. The Julius Nyerere International Airport (JNIA), located in Dar es Salaam, is the largest and busiest airport in Tanzania, accounting for over 70% of Tanzania's air passengers. In August 2019, Tanzanian President John Magufuli inaugurated Terminal 3 of the JNIA. The new terminal, which cost USD 314 million set the airport capacity at 8 million passengers annually.

In 2019, the AfDB approved a USD 272.12 million loan to Tanzania for the construction of a new international airport in the capital Dodoma. The new airport will be built in the district of Msalato, 12 kilometers from the capital Dodoma. The new facility is expected to handle at least 50,000 aircrafts and one million passengers per year.

Tanzania Water Transport

Tanzania has a coastline of about 720 kilometers on the Indian Ocean, and also borders Lake Victoria, Lake Nyasa, and Lake Tanganyika.

Both sea and inland waterways ports in Tanzania are managed and operated by the Tanzania Ports Authority (TPA). The TPA's main Indian Ocean ports are Dar es Salaam, Mtwara, and Tanga. Minor seaports serving coastal traffic include Lindi, Kilwa Masoko, Mafia Island, Bagamoyo, Pangani, and Kwale. Dar es Salaam is Tanzania's principal port with intrinsic capacity of 10.1 tonnes per year. The port handles over 92% of the total maritime ports' throughput.

The port serves land-linked countries of Malawi, Zambia, Democratic Republic of Congo, Rwanda, Burundi, and Uganda. These countries are connected to the port through two railway systems (TRL-1.0 metre gauge and TAZARA-1.067 cape gauge), road network, as well as the TAZAMA oil pipeline to Zambia. TPA also operates Tanzania's lake ports, maintaining around 20 ports on Lake Victoria. Some major ports include Bukoba, Kemono Bay, Musoma, and Nansio. Principal lake ports on Tanganyika include Kigoma and Kasanga. Additionally, there are 15 smaller ports along the lake. These ports provide trade connections between Burundi, Eastern Democratic Republic of the Congo, and Zambia.

Lake Nyasa has 4 important ports, at Itungi, Mbamba Bay, Liuli, and Manda. There are up to 10 others smaller TPA ports on the lake that facilitate passenger movement along the lake and between the countries of Malawi, Mozambique, and Tanzania.

4.0 TANZANIAN BUSINESS ENVIRONMENT

In the African continent, TANZANIA is among the top ten investment destinations in Africa, thanks to reforms and a conducive investment environment set by the government. The Rand Merchant Bank (RMB) ranked the country tenth in investment attractiveness, in the Where to Invest in Africa 2021 report released recently.

4.1 THE TANZANIA DEVELOPMENT CORRIDORS

Development of transport corridors has been one of the main strategies adopted by the Government of Tanzania to facilitate trade. Tanzania serves as a transit country for the import and export of Malawi, Zambia, DR Congo, Burundi, Rwanda and Uganda, using the port of Dar es Salaam. The main rail and road connections in Tanzania are, therefore, in an east-west direction, linking the ports with the hinterlands of those neighbouring countries. Tanzania is devoting much attention to the corridor concept in its development policy by concentrating efforts in the

Mtwara Corridor, Dar-es-Salaam Corridor, Central Corridor and the Tanga Corridor. The major challenge is to link import, export and transit traffic from and to neighbouring countries with transport development efforts, making Tanzania a natural regional hub.

The geography of Tanzania, including its size, diversity and dispersion, give roads a special position in the integration of the national economy. In particular, roads serve rural areas, where the majority of

the people live, more effectively than any other mode of transport. The current Tanzania Road Network length is about 85,000 km, which includes trunk and regional roads (35,000 km) managed by the Tanzania National Roads Agency (TANROADS), and the urban, district and feeder roads with a total of 50,000 km, managed by Local Government Authorities (LGA). There are also some unclassified roads, such as those managed by the Tanzania National Parks Authority (TANAPA), and by the Mining Companies and village authorities.

5.0 SWOT ANALYSIS

STRENGTHS

Strengths of the business are –

- Promoters have sound experience in this business and have talented Management.
- Rapid growth in sector due to effective management
- Influence & Networking of Directors in the Business Sector.
- Business location is at prominent place.
- Good roads and highway in Tanzania.
- Confirmed business via agreement entered with few companies.

WEAKNESSES

Weakness of the business are –

- New entry in logistics market
- Stiff competition from local market
- Limited market share growth

OPPORTUNITIES

Opportunities of the business are –

- Potential market encourages foreign investors
- Increasing market share due to rail transport limitations
- Augmented demand for world –class logistics and warehousing services
- Increased use of logistics services in sectors such as technology, consumer retail, automotive and industrial

THREATS

Threats of the business are –

- Complex Tax Structure
- Unorganised sector and competition
- Different laws in different countries
- Increasing fuel rates therefore increasing transportation costs

6.0 SERVICES OFFERED BY GBP GAS LIMITED

GBP GAS LIMITED Management understands that supply chain needs are unique and that's exactly why the company have engaged the best minds in the Transport industry to create specific transport solutions customized to suit your ever-changing cargo movement environment. GBP GAS LIMITED transport vans, trucks and trailers (closed body trailers, flat bed trailers and low loaders) from precision transport are designed to seamless execution, GBP GAS LIMITED dedicated cargo transportation professionals are engaged at every step of the way to provide the services with the most accurate transport and economical transportation arrangement that the industry has to offer.

GBP GAS LIMITED Transportation and the company Customs Brokerage Service allow the company to complete the supply chain, cargo transit and offers truly door-to-door transportation service in the freight industry. The company optimized transportation translates to fast transit service and the door-to-door delivery of your freight on time, safely transported and damage free.

Transport integration with Customs Brokerage Service

- Allows GBP GAS LIMITED Transport Logistics to complete the supply chain and offer truly door-to-door transportation service in the market

GBP GAS LIMITED

P. O. Box 3728, DARES SALAAM

- Eliminates unnecessary customs delays, transport dispatch and improves communication between the shipping line, Customs, Client and our transport department.
 - Provides greater control, handling and security of your freight transportation
 - Full range of freight forwarding services are offered, including customs clearance, warehousing, in-bond storage, transportation, etc.
 - Customer receives a single itemized invoice for door-to-door transportation eliminating additional administrative requirements
- GBP GAS LIMITED Transport Logistics plan to customize and design transportation solutions to transport client's freight at the speed and ease. GBP GAS LIMITED Management has been in the transport logistics and our transport segment delivers freight to numerous customers spread across east Africa namely Tanzania, Uganda, Northern Tanzania, Burundi, Rwanda, Southern Sudan and DR Congo.

GBP GAS LIMITED plan to combine the economy of rail transport with road transport handling for seamless door-to-door service and savings. The company transport network throughout Tanzania, Uganda, Northern Tanzania, Burundi, Rwanda, Southern Sudan and DR Congo and large transport trucks, closed body trailers, flat bed trailers and low loaders fleet are aligned to offer transport applications suitable for all

transportation needs. Whether clients freight requires rail transport or road transportation service, door-to-door transport, coast-to-coast transport, or cross-border transportation, GBP GAS LIMITED Transport Logistics is the solution.

Benefits of optimized door to door delivery and transportation

- GBP GAS LIMITED Transportation is dedicated to creating win-win solutions by investing talent, capital, and transport resources.
- Dynamic transport route optimization systems at client's disposal to create supply-chain door to door and reduce transport costs.
- The largest transportation truckload fleet and terminal network in the transport industry.
- Satellite tracking on our transport
- Modern fleet of transport trucks
- One of the Safest operating fleets in the transport industry
- Heavy and fragile equipment transported using air hydraulic low loaders.
- Door-to-door control of transport equipment = less handling, better security, and increased efficiency
- Fully multilingual experienced transport staff to cater all our transportation routes

- Strict requirements for transport department staff and constant integrity checks transport and delivery.

Container Transport Mode (Container on Flat Bed)

GBP GAS LIMITED Capital offers a complete door-to-door service for all of your container transport requirements. Our road transport fleet is comprised of 400 trucks and transportation trailers. The company plans to have the most modern container transport fleet in the transport industry and our container transport trucks are all equipped with satellite tracking, permitting real time tracking of your loads.

GBP GAS LIMITED Transport Logistics also supplement road transport fleet with our access to our East Africa railway transport line. GBP GAS LIMITED Transport Logistics is capable of transporting heavy and bulk cargo on Low Loader, rail and can also transport transit cargo on rail and low-loaders.

Heavy Haulage – Low-Loader Transportation

GBP GAS LIMITED transportation Low Loaders comprise of a variety of unique low loader trailer configurations, GBP GAS LIMITED Capital is still constantly engineering new low loader transport solutions for our customers' Low Loader Transportation requirements. GBP GAS LIMITED Transportation Logistics is rapidly becoming the preeminent low loader transport provider for

importers and exporters of many commodities, including earth transporting equipment and engineering structures that has to be transport on low loaders. Low loader as the industry's most dynamic carrier, GBP GAS LIMITED Transportation plans to expand our diverse portfolio of service-sensitive, specialty operations to meet our clients' low loaders needs.

Heavy Equipment Transport

Whether it is around town or interstate GBP GAS LIMITED Transportation has the low loaders and heavy transport equipment to transport any sized machines. We have low loader expertise required to transport, arrange all the permits, liase with police, load and unload cranes.

Mining Equipment Transport

GBP GAS LIMITED Low loader transport offers transportation services for heavy equipment utilizing their low loader trailers and has experienced transporting a range of Mining equipment including Hitachi Excavators, Zoom Lion Cranes, Caterpillars and Komatsu Dump Trucks, concrete mixers, graders and bulldozers on low loaders.

Local cargo

GBP GAS LIMITED offers the fastest Local cargo service in Tanzania. This airport-to-airport service puts your cargo, envelopes and other packages on the first scheduled flight and delivers them to the

recipient at the airport of arrival within one hour after the landing time.

No advance reservations are required for this service.

Tanzanian Cargo provides around-the-clock Local cargo service with same-day delivery across Tanzania.

Transit Cargo

GBP GAS LIMITED strive to extend standard services across vast distances and through rough terrain all across East Africa. Our motivated staff and our expertise in the industry always keep us on schedule by rail and road.

GBP GAS LIMITED provide relocation and movement of both of bulk and containerized goods. GBP GAS LIMITED offer a variety of transport solutions, be it grouping or other transport services such as part and full load shipments by road, railways or a combination of two

7.0 COMPETITION

According to data available there are more than 15,000 trucks registered in Tanzania and GBP GAS LIMITED plan to compete favorably with local and foreign companies

8.0 FINANCIAL ASPECTS FOR THE PROJECT

(i) Projected Profit and Loss Statement

The attached Appendix I shows the projected income for the 11years period. The position depicted is that the project earns profit throughout its life. Accumulated after tax profits grow from. **US\$5,384,964 in** the 1st year to **US\$ 112,582,790** in the 10th year.

(ii) Projected Cash Flows

The project's cash flows are shown in Appendix II. They depict a good liquid position right from the first year. Cash accumulation builds up from **US\$2,239,060** in the first year to **US\$ 130,283,059** at the end of 10th years of the project's operations based on the 400 trucks and trailers obtained.

(iii) Projected Balance Sheet

The project's assets cash flows are shown in Appendix III. Owners' equity grows from **US\$ 8,611,000** in the first year to **US\$ 121,193,790.3** at the end of 10th years of the project's operations based

(iv) Payback Period

Total investment is **US\$US\$,86,611,000** cash accumulation in 7th year **US\$ 92,779,870.04**, which is more than the initial

investment by US\$6,168,870, The project payback Period is exactly 7 years.

The project has a relatively short payback period. It is remarkably impressive for a project whose investment is as big as US\$86,611,000 is being recovered within 7years.

(v) Loan repayment

Total investment loan is US\$US\$ 77,949,900 to be repaid within 7 years.

9.0 ECONOMIC ASPECTS OF THE PROJECTS

Besides the financial/monetary returns to the owners, there are other benefits to be derived for the whole country viz.

(i) Employment Opportunities

Employment and poverty reduction are among the major concern of the Central and the Local Government authorities. It is gratifying to note that the company, is going to provide additional employment to 440people. This is a significant contribution coming from local investors.

(ii) Revenue to the Government

The Project is expected to pay a substantial annual amount in the form of corporation tax and other taxes

(iii) Foreign Exchange Earning

Since the project's clientele is mostly towards neighbouring countries the project will thus earn foreign currency for the United Republic of Tanzania. Out of all project expected cargo overhauling transactions will be settled in foreign currencies. In this study we have assumed that the project will be paid in foreign currency

10.0 CONCLUSION

- (i) The project is profitable and contributes to government revenue by way of taxes.
- (ii) The project provides employment to 440 people.
- (iii) The project is an encouraging sign to prove that we have good business environments and we have investors who have confidence in their country. Tanzania so much so that they are ready to invest such large sums of investment despite the odds of the sector in question.

11.0 RECOMMENDATION

After the foregoing economic and financial evaluation of the project, we strongly recommend that this project be implement and be given all the support required by all the concerned Government Ministries and Agencies, including the Tanzania Revenue Authority, TRA and the Tanzania Investment Centre – (TIC). The project deserves this support because of its viability, since it is technical feasible, economically viable and socially acceptable.

GBP GAS LIMITED
P. O. Box 3728, DARES SALAAM

APPENDIX I

GBP GAS LIMITED PROJECTED PROFIT AND LOSS STATEMENT US\$

	1	2	3	4	5	6	7.00	8	9.00	10
-										
Revenue	36,000,000.00	46,000,000.00	56,000,000.00	58,800,000.00	61,740,000.00	64,827,000.00	68,068,350.00	71,471,767.50	75,045,355.88	78,797,623
Operating Expenses:	23,400,000.00	29,900,000.00	36,400,000.00	38,220,000.00	40,131,000.00	42,137,550.00	44,244,427.50	46,456,648.88	48,779,481.32	51,218,455
Profit before Depreciation & Interest	16,380,000.00	16,100,000.00	19,600,000.00	20,580,000.00	21,609,000.00	22,689,450.00	23,823,922.50	25,015,118.63	26,265,874.56	27,579,168
Interest	4,676,994.00	4,008,852.00	3,340,710.00	2,672,568.00	2,004,426.00	1,336,284.00	668,142.00	-	-	-
Depreciation	4,010,200.00	4,010,200.00	4,010,200.00	4,010,200.00	4,010,200.00	4,010,200.00	4,010,200.00	4,010,200.00	4,010,200.00	4,010,200
Gross Profit	7,692,806.00	8,080,948.00	12,249,090.00	13,897,232.00	15,594,374.00	17,342,966.00	19,145,580.50	21,004,918.63	22,255,674.56	23,568,968
Tax (30%)	2,307,841.80	2,424,284.40	3,674,727.00	4,169,169.60	4,678,312.20	5,202,889.80	5,743,674.15	6,301,475.59	6,676,702.37	7,070,690
Profit After Tax	5,384,964.20	5,656,663.60	8,574,363.00	9,728,062.40	10,916,061.80	12,140,076.20	13,401,906.35	14,703,443.04	15,578,972.19	16,498,277
Accumulated Profit	5,384,964.00	11,041,627.60	19,615,990.60	29,344,053.00	40,260,114.80	52,400,191.00	65,802,097.35	80,505,540.39	96,084,512.58	112,582,790

GBP GAS LIMITED
P. O. Box 3728, DARES SALAAM

APPENDIX II

GBP GAS LIMITED PROJECTED CASH FLOWS US\$

SOURCES:		1	2	3	4	5	6	7	8	9	10
Profit before interest and depreciation	0	16,380,000	16,100,000	19,600,000	20,580,000	21,609,000	22,689,450	23,823,922.50	25,015,118.63	26,265,874	27,579,168
Equity	8,611,000								0.00	0	0.00
Loan	77,949,900								0.00	0	0.00
Total Sources	86,560,900	16,380,000	16,100,000	19,600,000	20,580,000	21,609,000	22,689,450	23,823,922	25,015,118	26,265,874	27,579,168
Applications:									0.00		
Capital expenditure	80,602,000	-	-	-	-	-	-	-	0.00		
working Capital & Others	5,958,900								0.00		
Cash	0	14,072,158	13,675,715	15,925,273	16,410,830	16,930,687	17,486,560	18,080,248	18,713,643	19,589,171	20,508,477
Tax	-	2,307,842	2,424,284	3,674,727	4,169,170	4,678,312	5,202,890	5,743,674	6,301,475.5	6,676,702	7,070,690.49
Sub total	86,560,900	16,380,000	16,100,000	19,600,000	20,580,000	21,609,000	22,689,450	23,823,922	25,015,118	26,265,874	27,579,168
Total applications	86,560,900	16,380,000	16,100,000.00	19,600,000.00	20,580,000.00	21,609,000.00	22,689,450.00	23,823,922.50	25,015,118.63	26,265,874.00	27,579,168
Accumulated cash		2,239,060	15,914,775	31,840,048	48,250,879	65,181,566	22,689,450	71,471,767	90,185,410	109,774,582	130,283,059

GBP GAS LIMITED

P. O. Box 3728, DARES SALAAM

APPENDIX III

GBP GAS LIMITED PROJECTED BALANCE SHEET US\$

Fixed Assets	-								
Opening balance	-	12,602,000	11,391,800	10,181,600	8,971,400	7,761,200	6,551,000	5340800	4130600
Total Long-term Assets	-	12,602,000	11,391,800	10,181,600	8,971,400	7,761,200	6,551,000		
Less depreciation	-	1,210,200	1,210,200	1,210,200	1,210,200	1,210,200	1,210,200	1210200	1210200
Closing balance	-	11,391,800	10,181,600	8,971,400	7,761,200	6,551,000	5,340,800		
Working capital	3,009,000	3,009,000	3,009,000	3,009,000	3,009,000	3,009,000	3,009,000	3009000	3009000
Accumulated cash	-	2,239,060.00	5,327,920.00	9,266,580.00	13,355,040	17,602,050	22,016,797	26,634,129	31,464,174
Total assets	3,009,000	16,639,860	18,518,520	21,246,980	24,125,240	27,162,050	30,366,597	29,643,129	34,473,174
Financed by									
Equity	8,611,000.00	8,611,000.00	8,611,000.00	8,611,000.00	8,611,000.00	8,611,000.00	8,611,000.00	8,611,000.00	8,611,000.00
Accumulated profit	-	608,860	2,151,520	4,627,980	7,338,240	10,291,050	13,495,597	16,902,729	20,522,574
Total equity	8,611,000	9,219,860	10,762,520	13,238,980	15,949,240	18,902,050	22,106,597	25,513,729	29,133,574
Long term loan	-	7,000,000	5,600,000	4,200,000	2,800,000	14,000,000	-		
Total debts	-	7,000,000	5,600,000	4,200,000	2,800,000	14,000,000	-	-	-
Total equity and debts	8,611,000	16,219,860	16,362,520	17,438,980	18,749,240.	32,902,050	22,106,597	25,513,729	29,133,574

GBP GAS LIMITED

P. O. Box 3728, DARES SALAAM

PROPOSED FINANCING PATTERN US\$

LOCAL LOAN	LOCAL EQUITY
7,000,000	8,611,000.00

GBP GAS LIMITED
P. O. Box 3728, DARES SALAAM

GBP GAS LIMITED PROJECTED DEPRECIATION SCHEDULE

US\$

GBP GAS LIMITED PROJECT IMPLEMENTATION SCHEDULE

	ACTIVITY	PERIOD
1.	Processing TIC Certificate of Incentive	Dec 2021
2.	Funds Mobilization	May – Dec 2021
3.	Ordering of Vehicles	Jan 2022 – Dec 2022
5.	Arrival of Vehicles	Feb 2022– Jan 2023
6.	Trial Operations	March 2022
7.	Commercial Operations	May 2022