

**EXECUTIVE DIRECTOR**

**TANZANIA INVESTMENT CENTRE (TIC)**

Plot No. 9A & B, Shaaban Robert St.

P.O. Box 938

DAR ES SALAAM

**THE UNITED REPUBLIC OF TANZANIA**

**Subject:** Application for Certificate of Incentives – Project: EGYPTIAN INDUSTRIAL CITY

After Greetings,

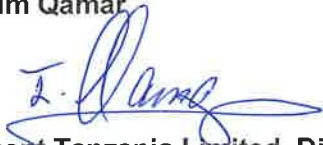
In view of the fact that Elsewedy Development Tanzania Limited is planning to develop the Industrial Park Project in The United Republic of Tanzania on an approximate area 2 Million square meters; a project which is expected to attract at least 50 **Investors** in different segmentations and to create more than 10,000 jobs for Tanzanian citizens, with a total approximate investment 200 Million US Dollars (Developer + Investors);

We hereby writing this letter requesting the TIC to facilitate the issuance of the Certificate of Incentives for the Project “EGYPTIAN INDUSTRIAL CITY” which is planned to be allocated in Plot surveyed under Registration Plan Number: DSMS0025801 as per attached Survey Plan.

Taking into consideration that the Agreement for Land purchased for the referred Plot is under negotiation and expected to be finalized very soon.

Sincerely;

Ibrahim Khalil Ibrahim Qamar



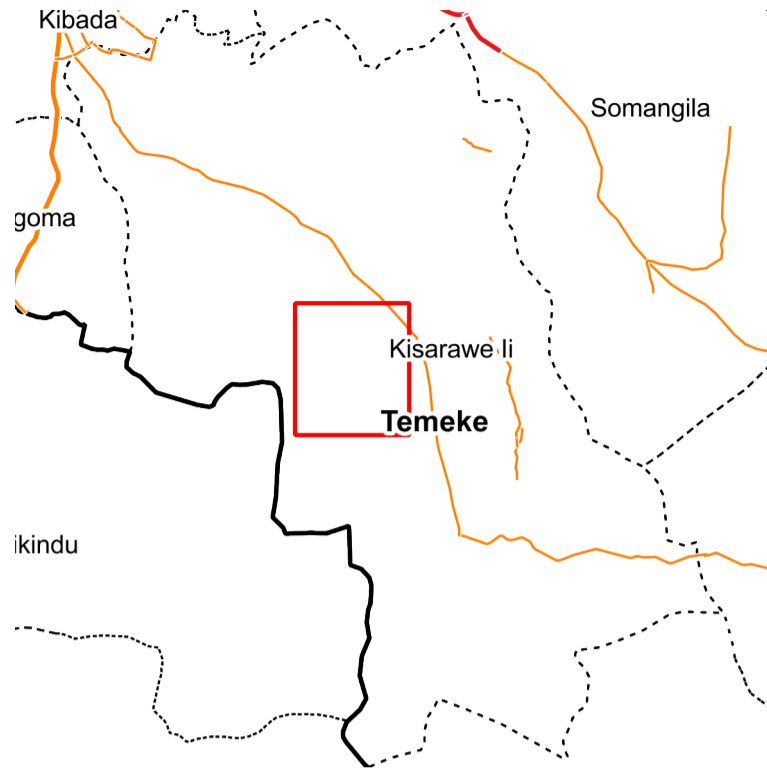
Elsewedy Development Tanzania Limited, Director





**LOCATION SKETCH**

---



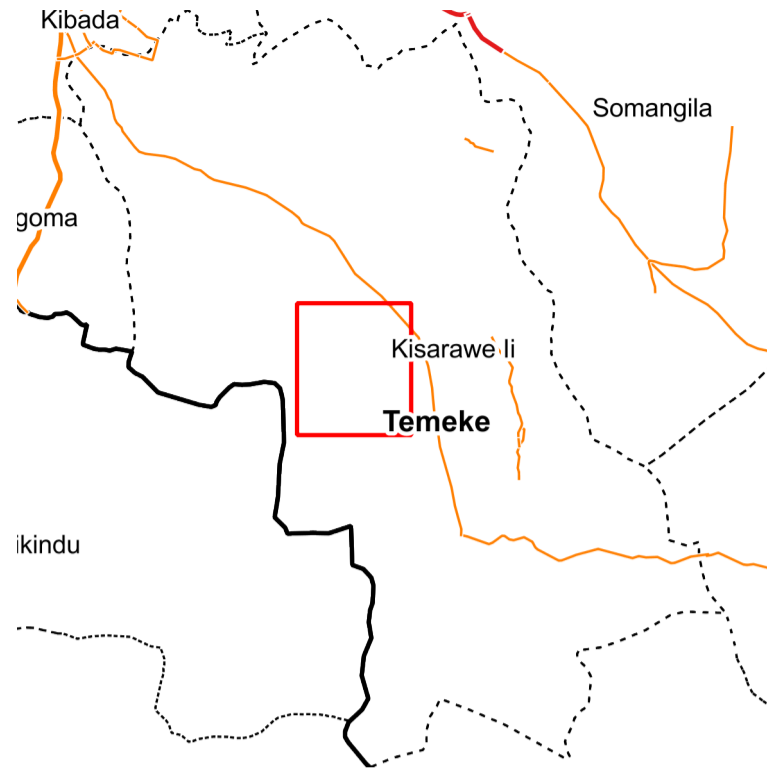
**COORDINATES OF BEACONS (Easting, Northings): TAREF11 / UTM 37S**

---

CB1:	545 419.74, 9 231 171.86
CB2:	544 006.15, 9 230 295.12
DUK152:	545 690.77, 9 231 042.03
DUK153:	545 690.66, 9 231 037.22
DUK154:	545 685.76, 9 231 031.33
DUK155:	545 686.60, 9 231 010.50
DUK211:	545 546.46, 9 230 613.01
DUK212:	545 539.86, 9 230 609.25
DUX453:	543 516.96, 9 230 280.76
DUX610:	543 500.51, 9 230 364.83
DUX629:	543 497.25, 9 230 359.39
DUX665:	544 222.74, 9 229 622.66
DUY322:	544 215.97, 9 230 390.23
DUY323:	544 174.97, 9 230 371.58
DUY356:	544 015.80, 9 230 278.64
DUY376:	543 591.66, 9 230 331.84
DUY377:	543 552.26, 9 230 377.41
DUY381:	543 997.35, 9 230 250.92
DUY382:	543 929.13, 9 230 211.67
DUY383:	543 874.21, 9 230 283.78
DUY385:	543 715.84, 9 230 335.17
DUY459:	544 854.14, 9 229 821.50
DUY460:	544 866.16, 9 229 714.59
DUY461:	544 749.20, 9 229 657.24
DUY481:	544 405.92, 9 229 687.95
DUY482:	544 339.33, 9 229 675.72
DUY562:	543 123.92, 9 229 420.20
DUY563:	543 127.95, 9 229 425.58
DUY572:	543 196.17, 9 229 069.67
DUY573:	543 190.23, 9 229 074.65
DUY578:	543 548.13, 9 229 502.66
DUY582:	543 556.73, 9 229 465.78
DUY585:	543 573.65, 9 229 832.60
DUY608:	544 137.48, 9 229 091.35
DUY609:	544 064.44, 9 228 980.92
DUY610:	544 056.75, 9 228 977.63
DUY647:	543 547.99, 9 229 069.23
DUY658:	545 214.92, 9 230 952.92
DUY705:	545 048.95, 9 230 135.10
DUY729:	545 367.57, 9 230 671.48

**LOCATION SKETCH**

---



**COORDINATES OF BEACONS (Easting, Northings): TAREF11 / UTM 37S**

---

<i>DUY733:</i>	545 463.91, 9 230 195.25
<i>DUY734:</i>	545 459.91, 9 230 190.24
<i>DUY736:</i>	545 146.84, 9 230 182.72
<i>DUY753:</i>	545 173.49, 9 231 043.71
<i>DUY755:</i>	545 364.27, 9 231 103.32
<i>DUY771:</i>	544 891.03, 9 230 696.47
<i>DUY774:</i>	545 164.64, 9 230 820.58
<i>DUY775:</i>	545 255.86, 9 230 862.18
<i>DUZ301:</i>	545 541.63, 9 231 204.77
<i>DUZ302:</i>	545 478.61, 9 231 132.66
<i>DUZ303:</i>	545 464.54, 9 231 131.77
<i>DUZ308:</i>	545 548.21, 9 231 204.77

**COORDINATES OF IPC (Easting, Northings): TAREF11 / UTM 37S**

---