

MARIAM HAULIERS CO. LIMITED

SIBED TRANSPORT COMPANY TANZANIA LIMITED

BUSINESS PLAN
FOR
CARGO TRANSPORTATION
PROJECT

1.0 INTRODUCTION

SIBED TRANSPORT COMPANY TANZANIA LIMITED is a company incorporated in Tanzania with certificate No. 138410749 dated 12nd December 2018 as private limited company under the Tanzanian Companies Act, 2002. SIBED TRANSPORT COMPANY TANZANIA LIMITED is engaged in the business of Transportation and Logistics, SIBED TRANSPORT COMPANY TANZANIA LIMITED is currently planning to provide global supply chain solutions providers within the country and in east Africa and SADC region.

1.1 OUR MISSION

To become our client's preferable service provider by providing quality services that exceed expectation of our customers.

1.2 OUR VISION

We remain true to the ethics and values of our organization while keeping Customer satisfaction as our priority.

1.3 OUR VALUES

Authentic, Steadfast, Candid, Team and Humbleness. We integrate honesty and business ethics into all aspect of our business function.

1.4 COMPANY OWNERSHIP

SIBED TRANSPORT COMPANY TANZANIA LIMITED

is promoted by two shareholders who are very experienced in transport and logistic business.

Share Holders	% of Share	Nationality
Said Ismail Mohamed P.O. Box 78717-00507 Nairobi	1	Kenya
Kulmia Abdallahi Mohamed P.O. Box 78717-00507 Nairobi	1	Kenya

1.6 PROJECT LOCATION

Registered office of the SIBED TRANSPORT COMPANY TANZANIA LIMITED is located at Plot No. **22 Block No. 230/33** ,Mbagala/Sabasaba, Temeke Dar es Salaam, Tanzania

1.7 FLEET SIZE

SIBED TRANSPORT COMPANY TANZANIA LIMITED is planning to purchase **500** trucks and trailers. With capacity of carrying **30** tons truck and trailer, on average one truck will conduct **1** trip per month operating for ten months per year, carrying **300** tons per year

SIBED TRANSPORT COMPANY TANZANIA LIMITED **management** intends to continue building its fleet to a level of

- 250 trucks by 2022
- 250 trucks by 2023

Required number of trailers will also be added to existing fleet in order to cater to additional requirements in line with truck additions.

1.8 PROJECT ESTIMATED REVENUE

The company has estimated that the project revenue to be US\$ 4000 per trip and one truck will conduct 1 trip per month, trucks to be operated for 10 months and the remaining 2 months been budgeted for maintenance

1.9 PROJECT OPERATING COST

The company has estimated that the project operating cost and other cost to be 65% of the total annual revenue

1.10 PROJECT FINANCING

The company has estimated that the project will be financed by long term loan US\$10,000,000 and remaining US\$8,251,000 will be shareholders contribution and cash generated from business.

1.11 PROJECT COST

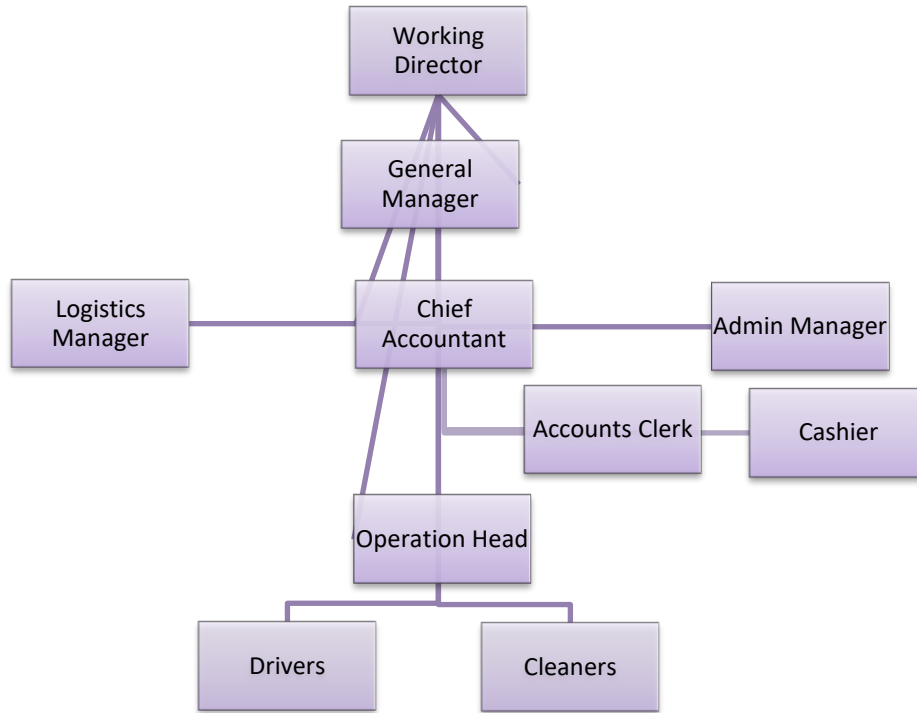
The project has budgeted to cost the followings US\$:

PARTICULAR	COST
Land and Buildings	40,000.00
Machinery & Equipment	200,000.00
Motor Vehicles	15,000,000.00
Furniture & Fixtures	2,000.00
Pre exp	5,000.00
Others	4,000.00
Working Capital	3,000,000.00
TOTAL	18,251,000.00

2.0 ORGANISATION FLOW CHART

SIBED TRANSPORT COMPANY TANZANIA LIMITED management will be headed by Managing Director. Core management team comprises of 1 General Manager, 1 HR and Admin Manager, 1 Logistics Manager, 1 Chief Accountant and 2 Junior accounting clerks. Operational team headed by 3 operational managers and includes drivers and cleaners. The organisation chart of the SIBED TRANSPORT COMPANY TANZANIA LIMITED is presented herein below:

MARIAM HAULIERS CO. LIMITED



Employees Distribution Summary

Employment	Foreign	Local	Total
Women	4	15	19
Men	8	520	528
TOTAL	12	535	547

3.0 TANZANIA TRANSPORT OVER VIEW

The Tanzanian transport sector comprises surface transport (including roads, railways), inland waterways (lakes and rivers), air transport, and sea transport.

Tanzania's transport sector contributed 8.1% to the country's real GDP in 2018 with USD 3.8 billion, compared to USD 2.8 billion in 2014, representing an increase of 33%.

Main growth drivers include the increase in the number of passengers carried and freight handled through road transport.

According to Tanzania's 2025 Development Vision, investments in infrastructure, particularly in the development of the road network, are the Government's top priority.

The World Bank (WB) and the African Development Bank (AfDB) support Tanzania in achieving its infrastructure development goals by providing grants and credits for projects.

Tanzania Road Transport

Road transport is the most widely used form of transport in Tanzania, carrying over 90% of the passengers and 75% of the freight traffic in the country.

The road network in Tanzania currently comprises 86,472 kilometers of roads, of which 12,786 kilometers are trunk roads, 21,105 kilometers are regional roads and the remaining 52,581 kilometers are district, urban and feeder roads.

Tanzania's Ministry of Works, Transport, and Communication through the Tanzania National Roads Agency (TANROADS) is managing the national road network of about 33,891 kilometers, comprising 12,786 kilometers of trunk and 21,105 kilometers of regional roads.

The remaining network of about 53,460 kilometers of urban, district and feeder roads is under the responsibility of the Prime Minister's Office Regional Administration and Local Government (PMO-RALG).

Tanzania Rail Transport

Railway transport is the second most important mode of transport after road and critical for long distance freight along the main transport corridors in Tanzania.

Tanzania has a total of 3,676 kilometers of railway lines operated by two railway systems, Tanzania Railways Corporation (TRC) and Tanzania – Zambia Railways (TAZARA).

The mainline of TRC comprises the central corridor between the port of Dar es Salaam in the east, linking central and western areas of the country and terminating at Kigoma on Lake Tanganyika in the west.

The TAZARA line is 1,860 kilometers in length, of which 975 kilometers is in Tanzania and 885 kilometers in Zambia.

Tanzania Air Transport

The total number of air passengers in Tanzania reached 6.2 million in 2019, compared to 5.2 million in 2015, representing an increase of 18%.

Currently (2020), there are 19 airline operators in Tanzania, including some of the leading international air carriers such as British Airways, KLM, Qatar Airways, and SWISS.

There are 58 airports in Tanzania and more than 300 private airstrips owned by mining companies and tour operators.

The Julius Nyerere International Airport (JNIA), located in Dar es Salaam, is the largest and busiest airport in Tanzania, accounting for over 70% of Tanzania's air passengers.

In August 2019, Tanzanian President John Magufuli inaugurated Terminal 3 of the JNIA. The new terminal, which cost USD 314 million set the airport capacity at 8 million passengers annually.

In 2019, the AfDB approved a USD 272.12 million loan to Tanzania for the construction of a new international airport in the capital Dodoma. The new airport will be built in the district of Msalato, 12 kilometers from the capital Dodoma.

The new facility is expected to handle at least 50,000 aircrafts and one million passengers per year

Tanzania Water Transport

Tanzania has a coastline of about 720 kilometers on the Indian Ocean, and also borders Lake Victoria, Lake Nyasa, and Lake Tanganyika.

Both sea and inland waterways ports in Tanzania are managed and operated by the Tanzania Ports Authority (TPA).

The TPA's main Indian Ocean ports are Dar es Salaam, Mtwara, and Tanga. Minor seaports serving coastal traffic include Lindi, Kilwa Masoko, Mafia Island, Bagamoyo, Pangani, and Kwale.

Dar es Salaam is Tanzania's principal port with intrinsic capacity of 10.1 tonnes per year. The port handles over 92% of the total maritime ports' throughput

The port serves land-linked countries of Malawi, Zambia, Democratic Republic of Congo, Rwanda, Burundi, and Uganda.

These countries are connected to the port through two railway systems (TRL-1.0 metre gauge and TAZARA-1.067 cape gauge), road network, as well as the TAZAMA oil pipeline to Zambia.

TPA also operates Tanzania's lake ports, maintaining around 20 ports on Lake Victoria. Some major ports include Bukoba, Kemono Bay, Musoma, and Nansio.

Principal lake ports on Tanganyika include Kigoma and Kasanga. Additionally, there are 15 smaller ports along the lake. These ports provide trade connections between Burundi, Eastern Democratic Republic of the Congo, and Zambia.

Lake Nyasa has 4 important ports, at Itungi, Mbamba Bay, Liuli, and Manda. There are up to 10 others smaller TPA ports on the lake that facilitate passenger movement along the lake

and between the countries of Malawi, Mozambique, and Tanzania.

4.0 TANZANIAN BUSINESS ENVIRONMENT

In the African continent, TANZANIA is among the top ten investment destinations in Africa, thanks to reforms and a conducive investment environment set by the government.

The Rand Merchant Bank (RMB) ranked the country tenth in investment attractiveness, in the Where to Invest in Africa 2021 report released recently.

4.1 THE TANZANIA DEVELOPMENT CORRIDORS

Development of transport corridors has been one of the main strategies adopted by the Government of Tanzania to facilitate trade. Tanzania serves as a transit country for the import and export of Malawi, Zambia, DR Congo, Burundi, Rwanda and Uganda, using the port of Dar es Salaam. The main rail and road connections in Tanzania are, therefore, in an east-west direction, linking the ports with the hinterlands of those

neighbouring countries. Tanzania is devoting much attention to the corridor concept in its development policy by concentrating efforts in the

Mtwara Corridor, Dar-es-Salaam Corridor, Central Corridor and the Tanga Corridor. The major challenge is to link import, export and transit traffic from and to neighbouring countries with transport development efforts, making Tanzania a natural regional hub.

The geography of Tanzania, including its size, diversity and dispersion, give roads a special position in the integration of the national economy. In particular, roads serve rural areas, where the majority of the people live, more effectively than any other mode of transport. The current Tanzania Road Network length is about 85,000 km, which includes trunk and regional roads (35,000 km) managed by the Tanzania National Roads Agency (TANROADS), and the urban, district and feeder roads with a total of 50,000 km, managed by Local Government Authorities (LGA). There are also some

unclassified roads, such as those managed by the Tanzania National Parks Authority (TANAPA), and by the Mining Companies and village authorities.

5.0 SWOT ANALYSIS

STRENGTHS

Strengths of the business are –

- Promoters have sound experience in this business and have talented Management.
- Rapid growth in sector due to effective management
- Influence & Networking of Directors in the Business Sector.
- Business location is at prominent place.
- Good roads and highway in Tanzania.
- Confirmed business via agreement entered with few companies.

WEAKNESSES

Weakness of the business are –

- Stiff competition from local market
- Limited market share growth

OPPORTUNITIES

Opportunities of the business are –

- Potential market encourages foreign investors
- Increasing market share due to rail transport limitations
- Augmented demand for world –class logistics and warehousing services
- Increased use of logistics services in sectors such as technology, consumer retail, automotive and industrial

THREATS

Threats of the business are –

- Complex Tax Structure
- Unorganised sector and competition
- Different laws in different countries
- Increasing fuel rates therefore increasing transportation costs

6.0 SERVICES OFFERED BY SIBED TRANSPORT COMPANY TANZANIA LIMITED

SIBED TRANSPORT COMPANY TANZANIA LIMITED

Management understands that your supply chain needs are unique and that's exactly why the company have engaged the best minds in the Transport industry to create specific transport solutions customized to suit your ever-changing cargo movement environment. SIBED TRANSPORT COMPANY TANZANIA LIMITED transport vans, trucks and trailers (closed body trailers, flat bed trailers and low loaders) from precision transport are designed to seamless execution, SIBED TRANSPORT COMPANY TANZANIA

LIMITED dedicated cargo transportation professionals are engaged at every step of the way to provide the services with the most accurate transport and economical transportation arrangement that the industry has to offer.

SIBED TRANSPORT COMPANY TANZANIA LIMITED Transportation and the company Customs Brokerage Service allow the company to complete the supply chain, cargo transit and offers truly door-to-door transportation service in the freight industry. The company optimized transportation translates to fast transit service and the door-to-door delivery of your freight on time, safely transported and damage free.

Transport integration with Customs Brokerage Service

- Allows SIBED TRANSPORT COMPANY TANZANIA LIMITED Transport Logistics to complete the supply chain and offer truly door-to-door transportation service in the market

- Eliminates unnecessary customs delays, transport dispatch and improves communication between the shipping line, Customs, Client and our transport department.
- Provides greater control, handling and security of your freight transportation
- Full range of freight forwarding services are offered, including customs clearance, warehousing, in-bond storage, transportation, etc.
- Customer receives a single itemized invoice for door-to-door transportation eliminating additional administrative requirements

SIBED TRANSPORT COMPANY TANZANIA LIMITED

Transport Logistics plan to customize and design transportation solutions to transport client's freight at the speed and ease. SIBED TRANSPORT COMPANY TANZANIA LIMITED Management has been in the transport logistics and our transport segment delivers freight to

numerous customers spread across east Africa namely Tanzania, Uganda, Northern Tanzania, Burundi, Rwanda, Southern Sudan and DR Congo.

SIBED TRANSPORT COMPANY TANZANIA LIMITED

plan to combine the economy of rail transport with road transport handling for seamless door-to-door service and savings. The company transport network throughout Tanzania, Uganda, Northern Tanzania, Burundi, Rwanda, Southern Sudan and DR Congo and large transport trucks, closed body trailers, flat bed trailers and low loaders fleet are aligned to offer transport applications suitable for all transportation needs. Whether clients freight requires rail transport or road transportation service, door-to-door transport, coast-to-coast

transport, or cross-border transportation, SIBED

TRANSPORT COMPANY TANZANIA LIMITED

Transport Logistics is the solution.

Benefits of optimized door to door delivery and transportation

- SIBED TRANSPORT COMPANY TANZANIA LIMITED Transportation is dedicated to creating win-win solutions by investing talent, capital, and transport resources.
- Dynamic transport route optimization systems at clients disposal to create supply-chain door to door and reduce transport costs.
- The largest transportation truckload fleet and terminal network in the transport industry.
- Satellite tracking on our transport
- Modern fleet of transport trucks
- One of the Safest operating fleets in the transport industry
- Heavy and fragile equipment transported using air hydraulic low loaders.
- Door-to-door control of transport equipment = less handling, better security, and increased efficiency
- Fully multilingual experienced transport staff to cater all our transportation routes

- Strict requirements for transport department staff and constant integrity checks transport and delivery.

Container Transport Mode (Container on Flat Bed)

SIBED TRANSPORT COMPANY TANZANIA LIMITED

Capital offers a complete door-to-door service for all of your container transport requirements. Our road transport fleet is comprised of 400 trucks and transportation trailers. The company plans to have the most modern container transport fleet in the transport industry and our container transport trucks are all equipped with satellite tracking, permitting real time tracking of your loads.

SIBED TRANSPORT COMPANY TANZANIA LIMITED

Transport Logistics also supplement road transport fleet with our access to our East Africa railway transport line. SIBED TRANSPORT COMPANY TANZANIA LIMITED Transport Logistics is capable of transporting heavy and bulk cargo on Low Loader, rail and can also transport transit cargo on rail and low-loaders.

Heavy Haulage – Low-Loader Transportation

SIBED TRANSPORT COMPANY TANZANIA LIMITED

transportation Low Loaders comprise of a variety of unique low loader trailer configurations, SIBED TRANSPORT COMPANY TANZANIA LIMITED Capital is still constantly engineering new low loader transport solutions for our customers' Low Loader Transportation requirements. SIBED TRANSPORT COMPANY TANZANIA LIMITED Transportation Logistics is rapidly becoming the preeminent low loader transport provider for importers and exporters of many commodities, including earth transporting equipment and engineering structures that has to be transport on low loaders. Low loader as the industry's most dynamic carrier, SIBED TRANSPORT COMPANY TANZANIA LIMITED Transportation plans to expand our diverse portfolio of service-sensitive, specialty operations to meet our clients' low loaders needs.

Heavy Equipment Transport

Whether it is around town or interstate SIBED TRANSPORT COMPANY TANZANIA LIMITED Transportation has the low loaders and heavy transport equipment to transport any sized machines. We have low loader expertise required to transport, arrange all the permits, liase with police, load and unload cranes.

Mining Equipment Transport SIBED TRANSPORT COMPANY TANZANIA LIMITED Low loader transport offers transportation services for heavy equipment utilizing their low loader trailers and has experienced transporting a range of Mining equipment including Hitachi Excavators, Zoom Lion Cranes, Caterpillars and Komatsu Dump Trucks, concrete mixers, graders and bulldozers on low loaders.

Local cargo

SIBED TRANSPORT COMPANY TANZANIA LIMITED offers the fastest Local cargo service in Tanzania. This airport-to-airport service puts your cargo, envelopes and other packages on the first scheduled flight and deliver them to the recipient at the airport of arrival within one

hour after the landing time. No advance reservations are required for this service.

Tanzanian Cargo provides around-the-clock Local cargo service with same-day delivery across Tanzania.

Transit Cargo

SIBED TRANSPORT COMPANY TANZANIA LIMITED strive to extend standard services across vast distances and through rough terrain all across East Africa. Our motivated staff and our expertise in the industry always keep us on schedule by rail and road.

SIBED TRANSPORT COMPANY TANZANIA LIMITED provide relocation and movement of both of bulk and containerized goods. SIBED TRANSPORT COMPANY TANZANIA LIMITED offer a variety of transport solutions, be it grouping or other transport services such as part and full load shipments by road, railways or a combination of two

7.0 COMPETITION

According to data available there are more than 15,000 trucks registered in Tanzania and SIBED TRANSPORT COMPANY TANZANIA LIMITED plan to compete favorably with local and foreign companies

8.0 FINANCIAL ASPECTS FOR THE PROJECT

(i) Projected Profit and Loss Statement

The attached Appendix I shows the projected income for the 12years period. The position depicted is that the project earns profit throughout its life. Accumulated after tax profits grow from. **US\$ 2,605,470** in the 1st year to **US\$ 28,207,200**in the 10th year.

(ii) Projected Cash Flows

The project's cash flows are shown in Appendix II. They depict a good liquid position right from the first year. Cash accumulation builds up from **US\$ 3,883,370** in the first year to **US\$ 38,833,700** at the end of 10th

years of the project's operations based on the 500 trucks and trailers obtained.

(iii) Projected Balance Sheet

The project's assets cash flows are shown in Appendix III. Owners' equity grows from US\$ **8,251,000.00** in the first year to **US\$ 36,458,200.00** at the end of 10th years of the project's operations based

(iv) Payback Period

Total investment is **US\$ 18,251,000** cash accumulation in 5th year **US\$ 21,168,480**, which is more than the initial investment by **US\$2,917,480**, The project payback Period is exactly 5 years.

(v) Loan repayment

Total investment loan is **US\$ 10,000,000** to be re paid within 7 years with 6% interest

9.0 ECONOMIC ASPECTS OF THE PROJECTS

Besides the financial/monetary returns to the owners, there are other benefits to be derived for the whole country viz.

(i) Employment Opportunities

Employment and poverty reduction are among the major concern of the Central and the Local Government authorities. It is gratifying to note that the company, is going to provide additional employment to 440people. This is a significant contribution coming from local investors.

(ii) Revenue to the Government

The Project is expected to pay a substantial annual amount in the form of corporation tax and other taxes

(iii) Foreign Exchange Earning

Since the project's clientele is mostly towards neighbouring countries the project will thus earn foreign currency for the United Republic of Tanzania. Out of all project expected cargo overhauling transactions will be settled in foreign currencies. In this study we have assumed that the project will be paid in foreign currency

10.0 CONCLUSION

- (i) The project is profitable and contributes to government revenue by way of taxes.
- (ii) The project provides employment to 547 people.
- (iii) The project is an encouraging sign to prove that we have good business environments and we have investors who have confidence in their country. Tanzania so much so that they are ready to invest such large sums of investment despite the odds of the sector in question.

11.0 RECOMMENDATION

After the foregoing economic and financial evaluation of the project, we strongly recommend that this project be implemented and be given all the support required by all the concerned Government Ministries and Agencies, including the Tanzania

Revenue Authority, TRA and the Tanzania Investment Centre – (TIC). The project deserves this support because of its viability, since it is technical feasible, economically viable and socially acceptable.

MARIAM HAULIERS CO. LIMITED

APPENDIX I

SIBED TRANSPORT COMPANY TANZANIA LIMITED PROJECTED PROFIT AND LOSS STATEMENT US\$

-	1	2	3	4	5	6	7	8	9	10
Revenue	20,000,000.00	20,000,000.00	20,000,000.00	20,000,000.00	20,000,000.00	20,000,000.00	20,000,000.00	20,000,000.00	20,000,000.00	20,000,000.00
Operating Expenses:	15,000,000.00	15,000,000.00	15,000,000.00	15,000,000.00	15,000,000.00	15,000,000.00	15,000,000.00	15,000,000.00	15,000,000.00	15,000,000.00
Profit before Depreciation & Interest	5,000,000.00	5,000,000.00	5,000,000.00	5,000,000.00	5,000,000.00	5,000,000.00	5,000,000.00	5,000,000.00	5,000,000.00	5,000,000.00
Interest	525,000.00	525,000.00	375,000.00	300,000.00	225,000.00	150,000.00	75,000.00	-	-	-
Depreciation	752,900.00	752,900.00	752,900.00	752,900.00	752,900.00	752,900.00	752,900.00	752,900.00	752,900.00	752,900.00
Gross Profit	3,722,100.00	3,722,100.00	3,872,100.00	3,947,100.00	4,022,100.00	4,097,100.00	4,172,100.00	4,247,100.00	4,247,100.00	4,247,100.00
Tax (30%)	1,116,630.00	1,116,630.00	1,161,630.00	1,184,130.00	1,206,630.00	1,229,130.00	1,251,630.00	1,274,130.00	1,274,130.00	1,274,130.00
Profit After Tax	2,605,470.00	2,605,470.00	2,710,470.00	2,762,970.00	2,815,470.00	2,867,970.00	2,920,470.00	2,972,970.00	2,972,970.00	2,972,970.00
Accumulated Profit	2,605,470.00	5,210,940.00	7,921,410.00	10,684,380.00	13,499,850.00	16,367,820.00	19,288,290.00	22,261,260.00	25,234,230.00	28,207,200.00

MARIAM HAULIERS CO. LIMITED

APPENDIX II

SIBED TRANSPORT COMPANY TANZANIA LIMITED PROJECTED CASH FLOWS US\$

	0	1	2	3	4	5	6	7	8	9	10
SOURCES:											
Profit before interest and depreciation	0	5,000,000	5,000,000	5,000,000	5,000,000	5,000,000	5,000,000	5,000,000	5,000,000	5,000,000	5,000,000
Equity	8,251,000.00								0.00		0.00
Loan	10,000,000	-	-						0.00	0	0.00
Total Sources	18,251,000	5,000,000	5,000,000	5,000,000	5,000,000	5,000,000	5,000,000	5,000,000	5,000,000	5,000,000	5,000,000
Applications:									0.00		
Capital expenditure	15,242,000	-	-	-	-	-			0.00		
working Capital & Others	3,009,000	-	-						0.00		
Cash	0	3,883,370	3,883,370	3,883,370	3,883,370	3,883,370	3,883,370	3,883,370	3,883,370	3,883,370	3,883,370
Tax	-	1,116,630	1,116,630	1,116,630	1,116,630	1,116,630	1,116,630	1,116,630	1,116,630	1,116,630	1,116,630
Total applications	3,009,000	5,000,000	5,000,000	5,000,000	5,000,000	5,000,000	5,000,000	5,000,000	5,000,000	5,000,000	5,000,000
Accumulated cash		3,883,370	7,766,740	11,650,110.	15,533,480	19,416,850.	23,300,220	27,183,590	31,066,960	34,950,330	38,833,700.

MARIAM HAULIERS CO. LIMITED

APPENDIX III

SIBED TRANSPORT COMPANY TANZANIA LIMITED PROJECTED BALANCE SHEET US\$

	–	1	2	3	4	5	6	7	8	9	10
Fixed Assets	–										
Opening balance	–	15,242,000	20,489,100	25,736,100	24,983,100	24,230,100	23,477,100	22,724,100.00	21,971,100	21,218,100	20,465,100
Additions	–		–	–							
Total Long-term Assets	–	15,242,000	20,489,100	25,736,100	24,983,100	24,230,100	23,477,10	22,724,100	21,971,100	21,218,100	20,465,100.00
Less depreciation	–	752,900.00	752,900	752,900.00	752,900.00	752,900.00	752,900	752,900	752,900	752,900	752,900.00
Closing balance	–	14,489,100	752,900	24,983,200	24,230,200	23,477,200	22,724,200	21,971,200	21,218,200	20,465,200	19,712,200.00
Working capital	3,009,000	3,009,000	3,009,000	3,009,000	3,009,000	3,009,00	3,009,000	3,009,000	3,009,000	3,009,000	3,009,000.00
Accumulated cash	–	3,883,370	7,766,740	11,650,110	15,533,480	19,416,850	23,300,220	27,183,590	31,066,960	34,950,330	38,833,700.00
Total assets	3,009,000	21,381,470	11,528,640	39,642,310	42,772,680	45,903,050	49,033,420	52,163,790	55,294,160	58,424,530	61,554,900.00
Financed by											
Equity	8,251,000	8,251,000	8,251,000	8,251,000	8,251,000	8,251,00	8,251,000	8,251,000	8,251,000	8,251,000	8,251,000.00
Accumulated profit	–	2,605,470	5,210,940	7,921,410	10,684,380	13,499,850	16,367,820	19,288,290	22,261,260	25,234,230	28,207,200.00
Total equity	8,251,000	10,856,470	13,461,940	16,172,410	18,935,380	21,750,850	24,618,820	27,539,290	30,512,260	33,485,230	36,458,200.00
0	–	–	–	–	–	–	–	–	–	–	–

MARIAM HAULIERS CO. LIMITED

Bank overdraft	10,000,000	8,750,000	7,500,000	6,250,000	5,000,000	3,750,000	2,500,000	1,250,000			
Total debts	10,000,000	7,500,000	7,500,000	6,250,000	5,000,000	3,750,000	2,500,000	1,250,000	-	-	-
Total equity and debts	18,251,000	18,356,470	20,961,940	22,422,410	23,935,380	25,500,850	27,118,820	28,789,290	30,512,260	33,485,230	36,458,200.00

MARIAM HAULIERS CO. LIMITED

SIBED TRANSPORT COMPANY TANZANIA LIMITED PROPOSED FINANCING PATTERN US\$

LOCAL LOAN	LOCAL EQUITY
10,000,0000	8,251,000.0

SIBED TRANSPORT COMPANY TANZANIA LIMITED COST STRUCTURE US\$

PARTICULAR	US\$
	1
Land and Buildings	40,000.00
Machinery & Equipment	200,000.00
Motor Vehicles	15,000,000.00
Furniture & Fixtures	2,000.00
Pre exp	5,000.00
Others	4,000.00
Working Capital	3,000,000.00
TOTAL	18,251,000.00

MARIAM HAULIERS CO. LIMITED

SIBED TRANSPORT COMPANY TANZANIA LIMITED PROJECTED DEPRECIATION SCHEDULE

US\$

NAME OF ASSETS	1	2	3	4	5	6	7	8	9	10
Land And Buildings	40,000	39,200	38,400	37,600	36,800	36,000	35,200	34,400	33,600	32,800
Machinery, Tools & Equipment	200,000	198,000	196,000	194,000	192,000	190,000	188,000	186,000	184,000	182,000
Motor Vehicles	15,000,000	20,250,000	25,500,000	24,750,000	24,000,000	23,250,000	22,500,000	21,750,000	21,000,000	20,250,000
Furniture & Fixtures	2,000	1,900	1,700	1,500	1,300	1,100	900	700	500	300
Total	15,242,000	20,489,100	25,736,100	24,983,100	24,230,100	23,477,100	22,724,100	21,971,100	21,218,100	20,465,100
DEPRECIATION	1	2	3	4	5	6	7	8	9	10
Land and buildings	800	800	800	800	800	800	800	800	800	800
Machinery tools & Equipment	2,000	2,000	2,000	2,000	2,000	2,000	2,000	2,000	2,000	2,000
Motor Vehicles	750,000	750,000	750,000	750,000	750,000	750,000	750,000	750,000	750,000	750,000
Furniture & Fixtures	100	200	200	200	200	200	200	200	200	200
ANNUAL DEPRECIATION	752,900	753,000	753,000	753,000	753,000	753,000	753,000	753,000	753,000	753,000

MARIAM HAULIERS CO. LIMITED

SIBED TRANSPORT COMPANY TANZANIA LIMITED PROJECTED LONG TERM LOAN REPAYMENT

Year	principle	Loan Interest (6%)	Total Amount Paid	Loan Balance
0				10,000,000.00
1	1,250,000.00	525,000.00	1,775,000.00	8,750,000.00
2	1,250,000.00	525,000.00	1,775,000.00	7,500,000.00
3	1,250,000.00	375,000.00	1,625,000.00	6,250,000.00
4	1,250,000.00	300,000.00	1,550,000.00	5,000,000.00
5	1,250,000.00	225,000.00	1,475,000.00	3,750,000.00
6	1,250,000.00	150,000.00	1,400,000.00	2,500,000.00
7	1,250,000.00	75,000.00	1,325,000.00	1,250,000.00

SIBED TRANSPORT COMPANY TANZANIA LIMITED PAYBACK PERIOD

Year	Profit After Tax	Depreciation	Total Cash Flow	Accumulated Cash Flow
1	2,605,470.00	752,900.00	3,358,370	7,000,000.00
2	2,710,470.00	752,900.00	3,463,370	10,463,370.00
3	2,762,970.00	752,900.00	3,515,870	13,979,240.00
4	2,815,470.00	752,900.00	3,568,370	17,547,610.00
5	2,867,970.00	752,900.00	3,620,870	21,168,480.00
6	2,972,970.00	752,900.00	3,725,870	24,894,350.00

SIBED TRANSPORT COMPANY TANZANIA LIMITED PROJECT IMPLEMENTATION SCHEDULE

	ACTIVITY	PERIOD
1.	Processing TIC Certificate of Incentive	March 2022
2.	Funds Mobilization	March – June 2022
3.	Ordering of Vehicles	Feb 2022 – Dec 2027
5.	Arrival of Vehicles	March 2022 – Jan 2028
6.	Trial Operations	March 2022
7.	Commercial Operations	April 2022