

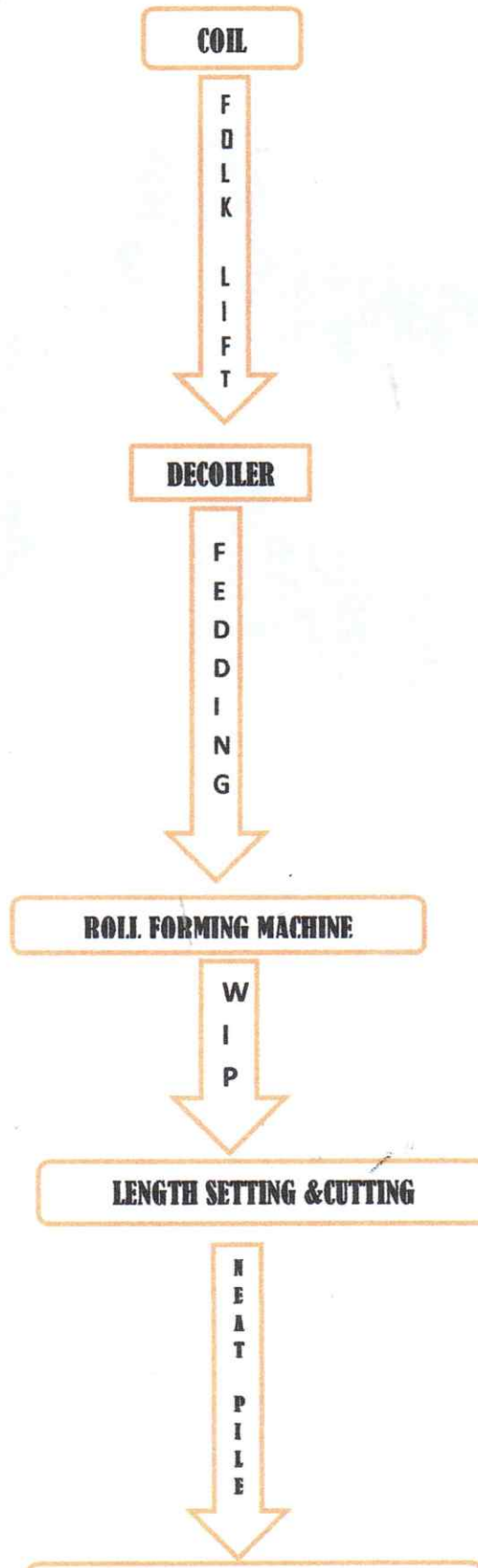


**EPIC ROOFING SHEET MANUFACTURE CO, LTD**

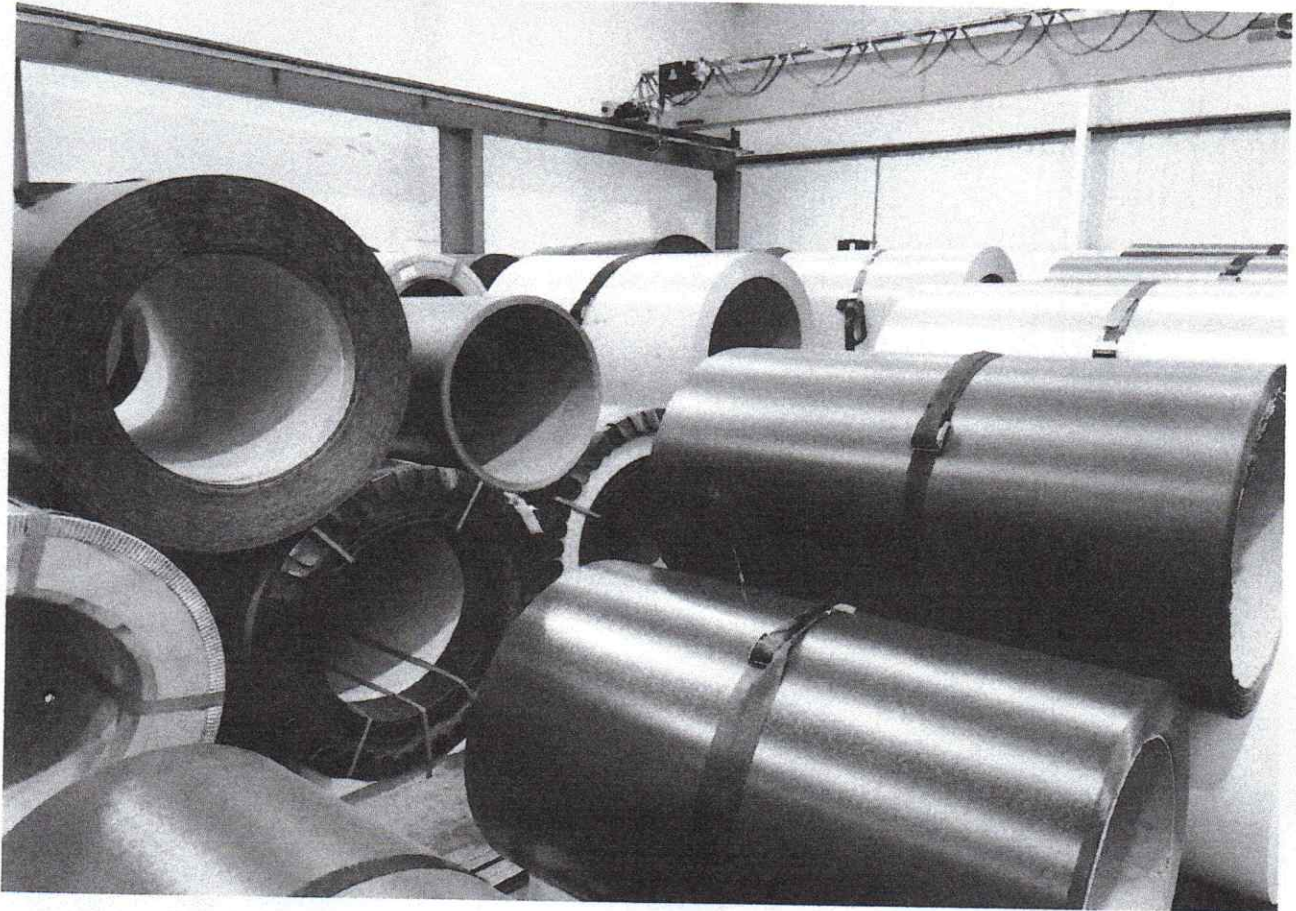
P.O.BOX 15366 SHEKILANGO ROAD DSM

TIN: 138-851-664 email: [epic.infotz@gmail.com](mailto:epic.infotz@gmail.com)

**"PROCESS FLOW CHART"**



## HOW ARE MY ROOFING SHEETS MADE?



our new roofing sheets start their life off as a steel coil. These are brought into us from a variety of suppliers.

The coils come in with the required coating. They will be in a variety of colours ready to be formed into roofing sheets.

The coils are extremely heavy each coil weighing approximately 3.5-5 tonne, this means they have to be moved using a forklift or gantry crane.

## HOW ARE MY ROOFING SHEETS MADE?



our new roofing sheets start their life off as a steel coil. These are brought into us from a variety of suppliers.

The coils come in with the required coating. They will be in a variety of colours ready to be formed into roofing sheets.

The coils are extremely heavy each coil weighing approximately 3.5-5 tonne, this means they have to be moved using a forklift or gantry crane.

As you can imagine having all the different colours, finishes and sizes available requires a vast amount of steel coils to be stored on the premises.

The coils are then moved using a Gantry Crane onto the decoiler ready to be fed into the roll forming machine.



The steel coil is fed through the roll forming machine, the first stage creates the centre profile of the sheet.



The steel material then follows the line to create a second profile, and so on until the material has become a finished product.



The steel sheet is then fed through the guillotine to the required length and cut to size. Each sheet is then stacked on top of one another in a neat pile to create the finished order. We then add a cover sheet to the top of the order to prevent any damage or scuffs to the finish.



**EPIC ROOFING SHEET MANUFACTURE CO,LTD**

P.O.BOX 15366 SHEKILANGO ROAD DSM

TIN: 138-851-664 email : epic.infotz@gmail.com



Prof. Kitila Mkumbo (MB) tearing a rope as sign of opening the factory



Mr Steven Mlay (front) operation manager briefing the former minister of industry and commerce prof Kitila Mkumbo (centre) on the Roofing steel process. Left and right are company directors (wearing caps) in factory inaugurating date.