

NGANO LIMITED PROGRESS REPORT FOR SIX MONTHS
12/03/2022-12/08/2022



Ngano Ltd

Planned Activities

Ngano Ltd is a registered commercial farm based in the Manayara District in Tanzania.

We currently process and pack commercial wheat, safflower and coriander.

We have put plans in place to help us realize a world class growing program with the aspirations of adding further value to the product by installing processing plants 3-5 years down the line.

We want to compete with the best in the industry. Aside from the purchase of additional farming equipment and machines, we have hired new personnel in key roles to bring the farms into the 21st century.

We have to put in place processes and strategies that will help us employ best practices when it comes to wheat, safflower and coriander.

Achievement made on the project Implementation

The Company Ngano limited planted two crops, wheat and Safflower, totaling 13515 acres. On wheat we harvested 3574 tons, Safflower and we have been increased production capacity as per figure below

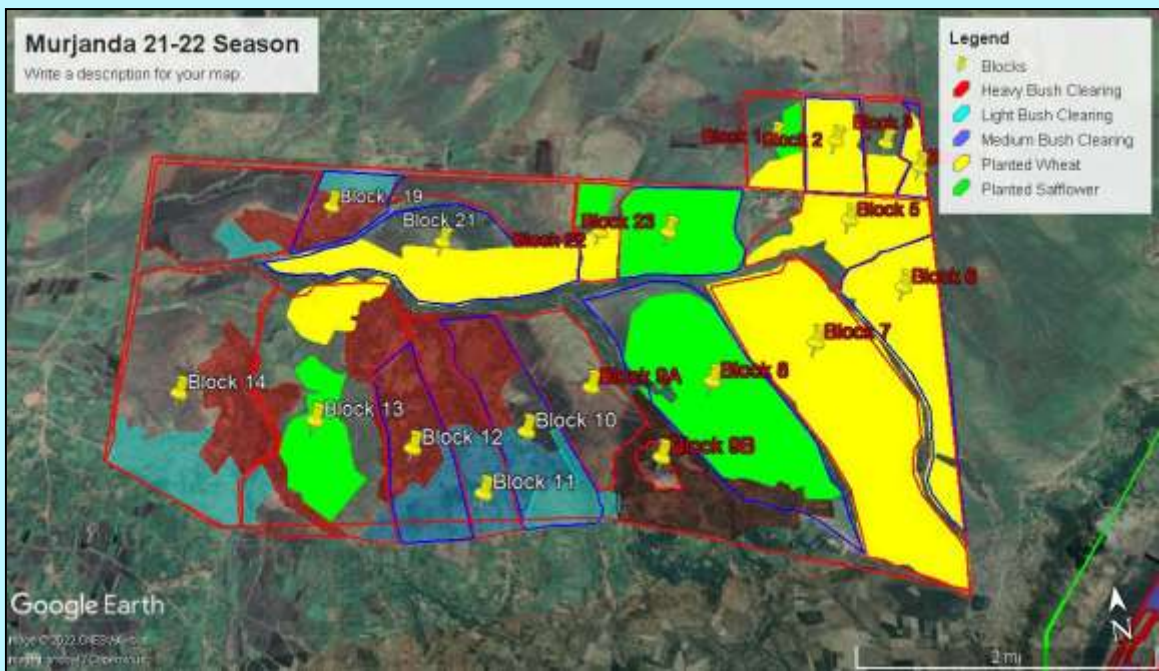
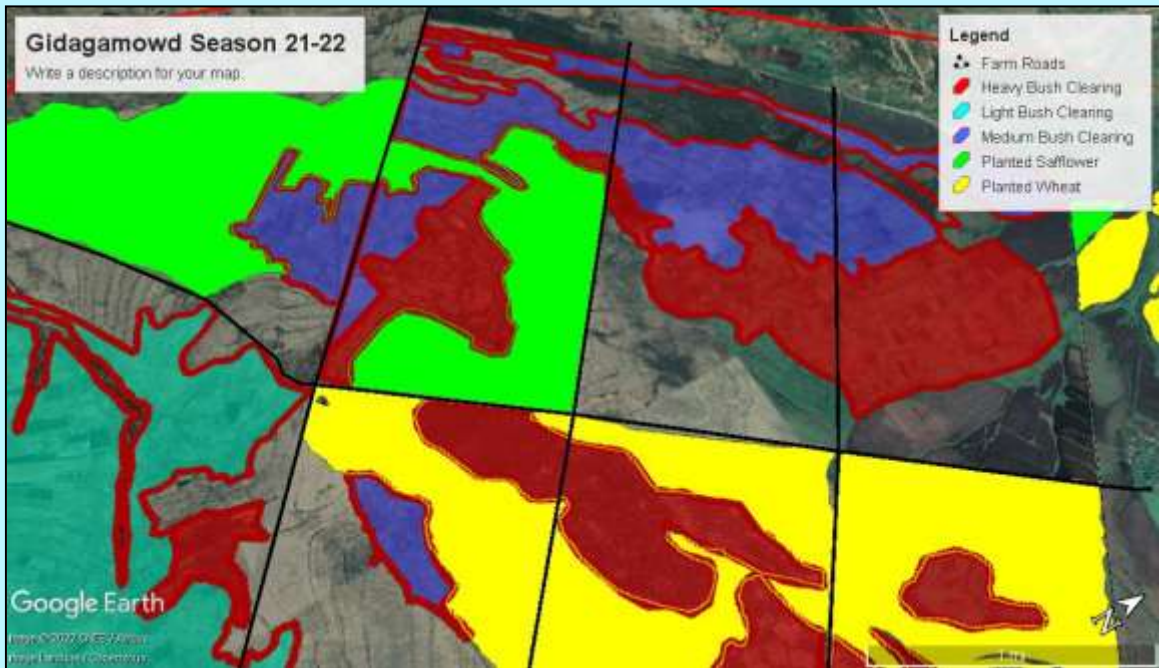
The images below show the wheat in yellow and the safflower in green for the 21/22 season.

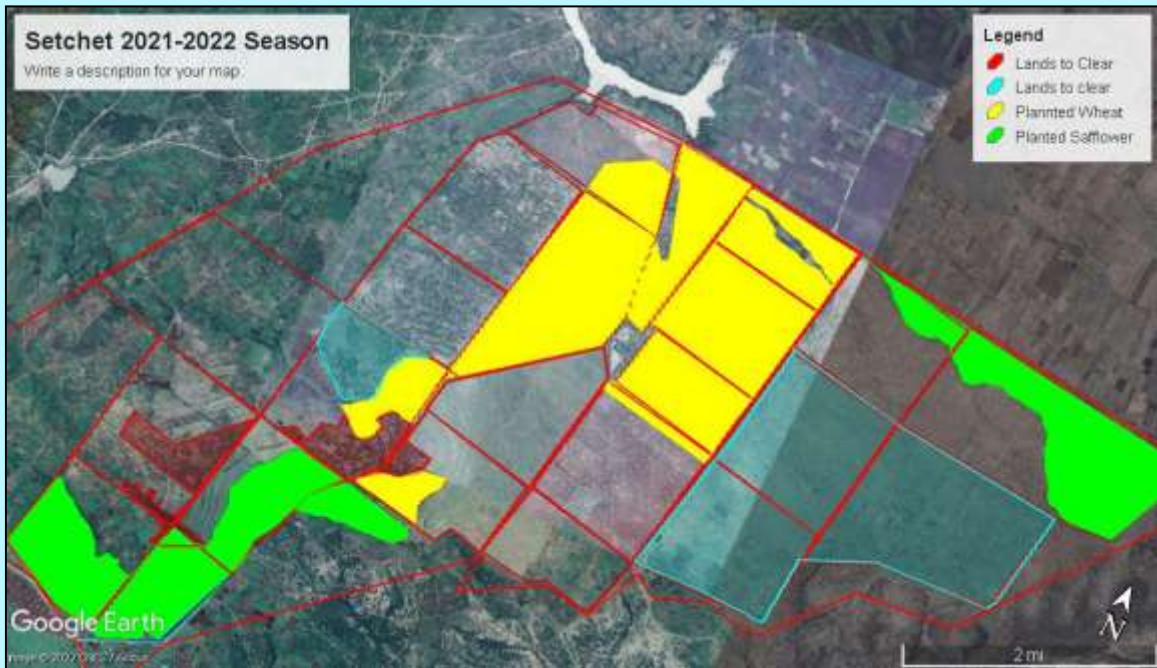
The areas in light blue, blue and red are areas marked out for bush clearing. This year we plan to open up another 5900 acres, taking the farms arable area to 27000 acres.

The Current status of the company and developments

The company has built the permanent offices in a farm field, digging one bore wells for the irrigation especially during draught seasons and install workshop for equipment maintenances also the company has sketching the whole land scape and identifying it as shown below for the crop plantation activities







The current update information/Share Holders

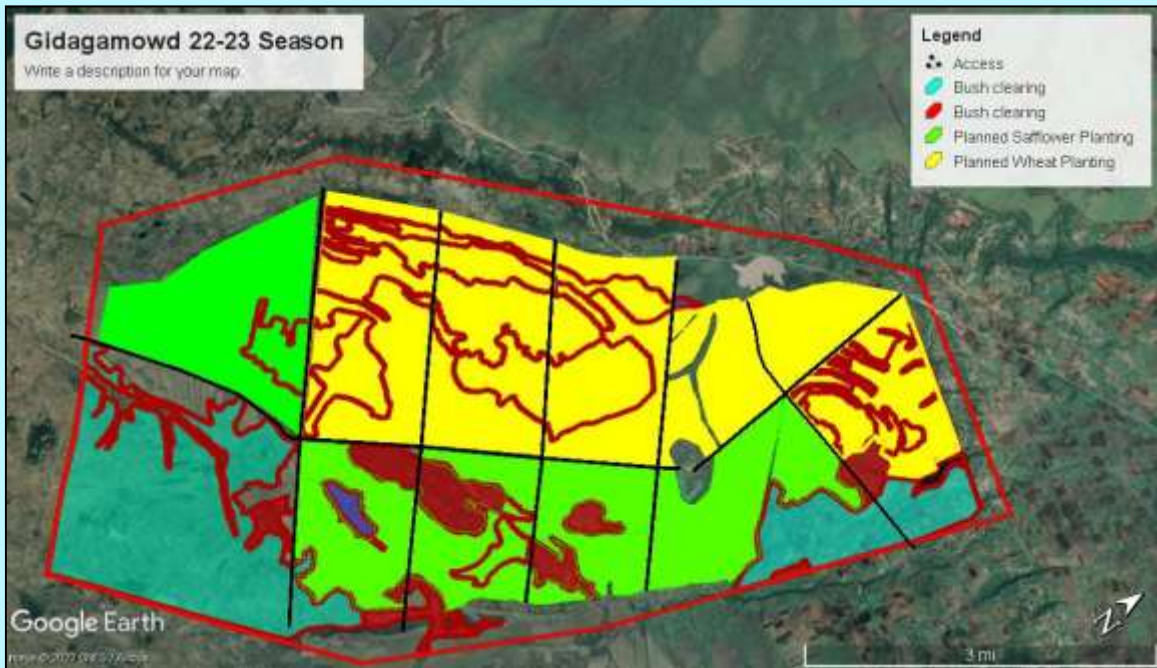
- i. Jaswart Sing Rai a Kenyan national has one (1) share.
- ii. Tejveer Sing Rai a Kenyan national has one (1) share.
- iii. Onkar Sing Rai a Kenyan national has one (1) share

The current project status

The current Project status is in operation and has good profit and sound production as explained below.

2022/23 SEASON

This season coming, we are planning to grow 21000 acres of wheat and 6000 acres of safflower and are expecting higher yields due to better soil practices and a better rainy season.



Company communication Information and Contact Person.

The company active commutations are nganolimited2012@gmail.com mobile number 0783 683102, physical address P.o.Box 208, Katesh Manyara. Contact Person Mr. Onkar Sing Director who can be found by phone number 0783 683102.

Company TIN and certificate of incorporation

The company has TIN number 105-032-463 and Certificate of Incorporation number 52625

Company Objectives

The main company objectives are crop production especial wheat, sunflower and coriander this is the core project activities and the project capacity per year id to produce 30,000 Metric tons of crop mentioned above

Direct Employment

The company has employed 200 permanent employees and 300 seasonal employees furthermore the company has 4 employee who are non -citizens both male, the company estimated to have employed 500 employees per seasonal.

Project Financing Expenditure to date

4. Project Financial Expenditure to date (USD)

	Foreign (USD)	Local (USD)	Total (USD)
Land and Buildings	0	1,397,263	1,397,263
Plant and machinery	0	846,182	846,182
Vehicles / Aircrafts	0	2,876,478	2,876,478
Furniture	0	14,103	14,103
Office equipment	0	8102	8102
Insurance Cover	0	1200,000	1200,000
Pre – operational Expenses	0	-	-
Working sub – total Capital	0	1917877	1917877
GRAND TOTAL	-	8260,005	8260,005

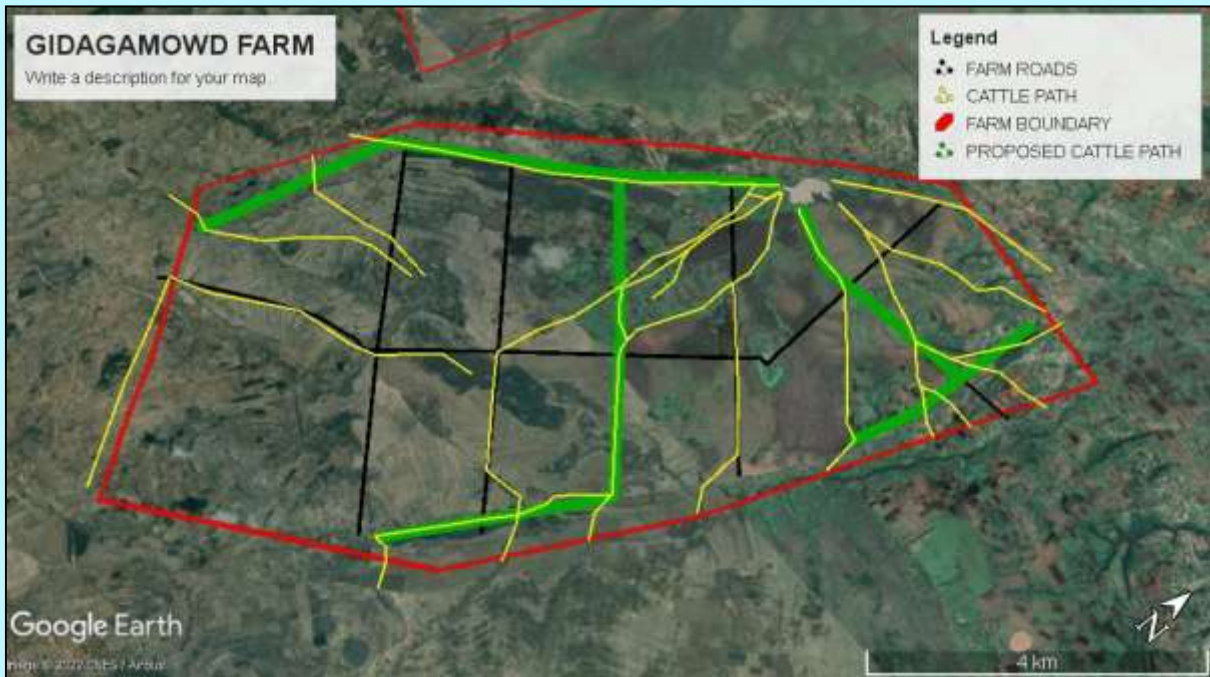
Project financing

5. Project Financing

	Amount (USD)	Source Country
Local Equity	20	Tanzania
Local Loans	3,558,660	Tanzania
Foreign Equity	0	-
Foreign Loans	0	-
Total Investment	3558680	-

Problem and Solutions company facing

As shown in the image above the cattle are coming from all sides of the farm, it is unlikely that we will be able to restrict the flow of the cattle to just 1 road.



The idea is to limit the cattle movements on the farm and thus compaction. The paths shown in the green markings will provide 2 cattle paths through the farm and 2 paths going around the boundary of the farm. This however is not working to date.

If we want to go further and fence off those roads it is a total of 24.2km of fencing.

We solve the issue by engaging local rulers and surrounding communities in annual meeting and reporting it to police stations.

2. The prices of inputs has increased considerably over the year, these include:

- Fuel and oils
- Fertilizer
- Chemicals

To name a few.

3. Gullies have developed over the years due to poor farm practices. The company has purchased 3 bulldozers and contracted an outside company to assist with farm maintenance and repair.

4. Theft of company properties from the village and we always report to the police station

5. Occupied land has an ongoing struggle especially at Gidagamowd where it is estimated that close on 5000 acres of land was utilized this past season illegally and without the consent of the company. This has also contributed to an increase in theft.

6. A very poor rainy season. We recorded the lowest rains at Murjanda for 13 years which made us to drill wells out of 12 wells only one produce water

FUTURE PLAN

Ngano Ltd is a major employer in the Hanang District, employing 200 permanent people and ranging between 300 seasonal employee we have focus on employing 500 permanent and 700 seasonal over 2 years to come.

The group has also made a sizeable commitment in terms of machinery and equipment for the 22/23 season as shown below









Recommendation

1. The government must establish land Bank for investors
2. The government must find and establish the financial institution to finance agriculture especially large-scale farming
3. National irrigation scheme must be established and adopted in order to challenge seasonal rainfall.
4. Theft in field must be taken punitive measures by police officers and court in order to discourage it.
5. Demarcation between village land and native land must be identified by local authorities in order to reduce encroachment and trespassing.