

**THE ESTABLISHMENT OF KIDUNDA OPEN WILDLIFE
RANCH AT KIDUNDA, VINGANDE/ KIDUNDA VILLAGE IN KISARAWA
DISTRICT, PWANI REGION**

Prepared by;

Kidunda Ranches Limited

Chamwino - Dodoma

P.O. Box 261,

Cell phone No.: +255 789 254 846

E-mail address: kidundaranches@yahoo.com

DAR ES SALAAM

Submitted to:

Tanzania Wildlife Management Authority

2022

Table of Contents:

1.1 NAME OF THE COMPANY: KIDUNDA RANCHES LIMITED.....	4
1.2 CONTACT NAME AND POST: Director.....	4
1.3 PROJECT NAME: KIDUNDA RANCHES	4
1.4 LOCATION: VINGANDE/ KIDUNDA VILLAGE, KISARAWA, PWANI - Tanzania.....	4
1.5 PROJECT SUMMARY:	4
2.0 PROJECT RATIONALE	4
2.1 Background Information and Rationale of the Project	4
2.2 Objectives of establishing Open wildlife ranch.....	5
3.0 PROJECT IMPLEMENTATION PLAN	7
3.1 PROJECT STAFF	7
3.1.1 PROPOSED GOVERNANCE STRUCTURE	7
3.1.2 THE BOARD OF DIRECTORS:	8
3.1.3 ACCOUNTING.....	8
4.0 PROJECT MONITORING, REPORTING AND EVALUATION.....	8
5.0 PROJECT RISK ANALYSIS AND MITIGATION MEASURES.....	8
6.0 TECHNICAL DETAILS OF ESTABLISHMENT OF WILDLIFE RANCH PROJECT	9
6.1 Description of the Species	9
6.2 Adopted Methods of Farming	10
6.2.1 Methods with which the applicant will execute the project	10
6.2.2 Capturing wildlife from the wild and transportation	10
6.2.3 Transport arrangements	10
6.2.4 Water Supply	10
6.2.5 Food Supply.....	11
6.2.6 Expertise	11

6.2.7	Availability of veterinary services.....	11
7.0	FUTURE PLANS OF THE PROJECT	12
8.0	PRODUCTION MARKETING AND TRADE	12
8.1	Production plans for species	12
8.2	Potential markets and pricing	13
8.3	Economic aspects	13
8.3.1	Impact on government revenues.....	13
8.3.2	Benefits to communities adjacent to project surroundings.....	13
8.4	Community involvement/benefits	13
8.5	Record keeping and marking systems	13
8.5.1	Marking	13
8.5.2	Record keeping.....	14
8.6	Environmental characteristics	14
9.0	REFERENCES	15

1.0 INFORMATION SUMMARY DATA:

1.1 NAME OF THE COMPANY: KIDUNDA RANCHES LIMITED

1.2 CONTACT NAME AND POST: DIRECTOR

1.3 PROJECT NAME: KIDUNDA OPEN WILDLIFE RANCH

1.4 LOCATION: VINGANDE/ KIDUNDA VILLAGE, KISARAWA, PWANI - Tanzania

1.5 PROJECT SUMMARY:

The proposed project seeks to establish a Modern Open Wildlife Ranch which will serve as a recreation, research and education site in Pwani Region and the entire Coastal zone and nearby regions of Tanzania. This will be one of the efforts to join hands with the government of Tanzania as it has been promoting her tourism potentials internally and externally. Despite enjoying advantages of numerous National Parks and Game Reserves with various wild animals in the country, keeping wildlife is a new venture that will improve domestic tourism.

Wildlife ranch usually contribute in conservation of endangered species through confinement of few remaining individuals and gene banking, research purposes, education (training) and entertainment (tourism). Therefore modern open ranch should be established in places where members of the public can learn about animals and how they can contribute to the survival of endangered species through direct contributing fund or indirect through visiting fees. In addition, there will be information center which will provide information to visitors on heritage of famous Tanzania tribes. Importantly, establishment of this wildlife Ranch and information center will provide learning opportunities to students in schools, colleges and universities especially University of Dar es Salaam. The established ranch and information centre will also serve as recreational and entertaining places that in turn will ensure financial stability to the owner through tourism and entertainment fees.

2.0 PROJECT RATIONALE

2.1 Background Information and Rationale of the Project

Kidunda Ranches Limited is a private company incorporated on 19th July 2022 and registered under company's act of 2002. It was issued with certificate of incorporation number 156853097. Also Kidunda Ranches established a Open wildlife Ranch at VINGANDE/KIDUNDA VILLAGE in KISARAWA district, PWANI region. Main objectives for company's establishment among others are to carry business of game farming, breeders, butchers, taxidermy and shipping, classic adventure safari, lodge safari, and serve trophy and game meat to citizen and non-citizen to mention some.

The proposed project is about the construction of KIDUNDA OPEN WILDLIFE RANCH which will be located at VINGANDE/KIDUNDA VILLAGE in KISARAWA district, PWANI region. The proposed Open ranch will be established on a piece of land with an area of 2000 hectares. According to the Wildlife Conservation (Management of Wildlife Captive Facilities) Regulations, 2020, Ranch means an area of a minimum size of 2,000 hectares, kept for the purpose of a multiform utilisation of wildlife, where a wide range of consumptive or non-consumptive complementary uses are managed;. Currently, ranch are increasingly emphasizing ecological themes and the threats to threatened species in their public displays, research and lectures. All ranch projects direct public attention toward animals and habitats of conservation significance. As a result the public may become interested in protecting individual species after seeing them in ranch and reading about them. In the process thousands of other species of flora and fauna sharing these habitats will be protected.

Thus establishment of open wildlife ranch and tourism information center is an important aspect of any modern tourism industry; Tanzania is of no exception. Relevant and reliable information enhances wider understanding of the available attractions even before those attractions are visited. In most cases tourists are strangers to the destination communities and are unaware of the variety of available attractions in those communities. Such information serves as a catalyst to prospective tourists to visit particular attractions. The tourism information centre can promote a positive traveler experience by maintaining a visitor information program that provides reliable information about the destination. Also, the information center can enhance visitors' enjoyment, attracts them to stay longer and spend more money as well. Thus, Tourism Information Center (TIC) is the most important service facilities in any modern community. They are important because they provide initial contact information with tourists who wish to visit an attraction. Furthermore, they serve as an opportunity to create first impressions to visitors before the actual visit. Thus, the TIC must be able to provide complete information about the attractions and the community. Apart from being sources of information, TICs generate substantial amount of revenues to owners hence as business activity which is worth investing in.

2.2 Objectives of establishing open wildlife ranch

This project aims at establishment of wildlife Ranch within Pwani Region for education, recreation, hunting, photographing and income generation through international and domestic tourism. The proposed project supports the Tanzania's Wildlife policy of 2007 (URT, 2007), which encourages the private sector to invest in wildlife industry with farming being one form of consumptive and non-consumptive utilization. In addition, the

proposed project is in line with the Wildlife Conservation Act of 2009, which provides opportunities for consumptive and non-consumptive utilization of wildlife on private lands for the purposes of recreation, research, and education. Besides generating income, the proposed project has the following objectives:

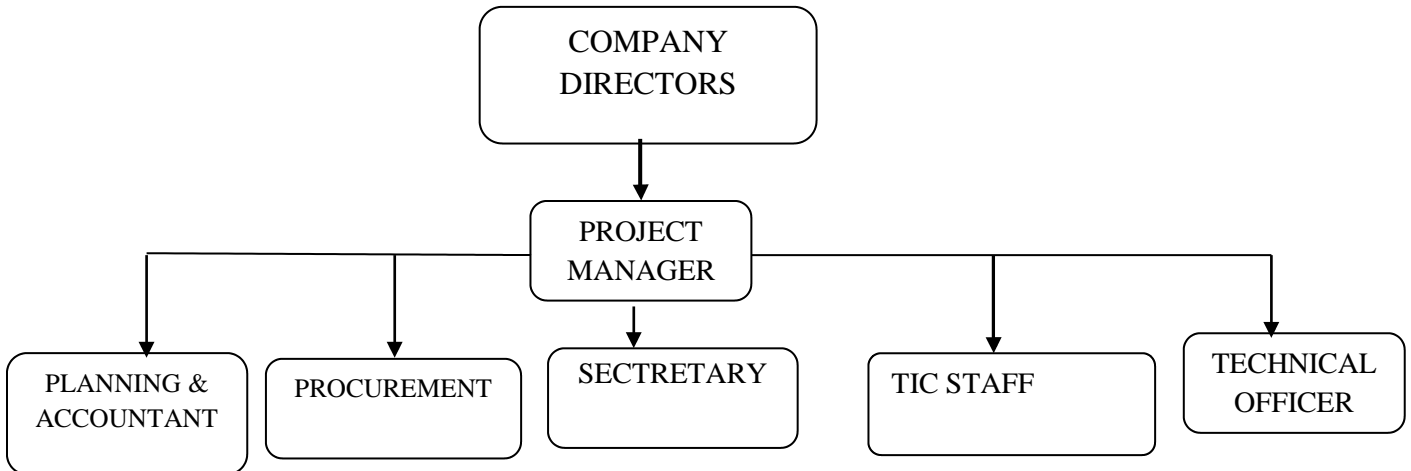
- a. To provide people of Pwani and adjacent regions with the opportunity to peer into the wild without actually traveling to distantly located National Parks and Game Reserves. Presence of the proposed animal ranch will offer opportunity to most people particularly from coastal zone to see much of the wildlife and become knowledgeable on wild animals.
- b. To promote ecotourism which generates income through provision of friendly amount of fee entry into the ranch, so as to accommodate all people with their different income; rich, poor, workers, business people as well as the students.
- c. To increase opportunities for doing scientific research for researchers such as academic staffs, wildlife conservation researchers, students in higher academic institutions. This is important for researchers or students who would focus their research on animal behavior, or investigate ways to maintain and grow the populations of endangered species.
- d. To provide recreation, fun time and enjoyable day outs to people, including the local people and students from different colleges; the proposed ranch will be adventure and source of entertainment in nature.
- e. To promote learning, and conservation interest for young generation/ students in kindergarten, primary and secondary schools; the proposed ranch will be open to children for recreation as well as for education purposes. Children will learn about wild animals by seeing animals as they appear in reality and type of food they consume, which is very fascinating to them.
- f. To promote employment for both owners of the ranch, animal specialists and local community living near the proposed Ranch. More than 45 men and women will be employed in this proposed ranch project.
- g. To facilitate the conservation of different animal species. The proposed animal ranch will insure safety, security, and prevention of any kind of pollution; cleanliness, immunization and treatment of any wildlife disease will be uniquely human responses to living in this ranch.
- h. To become a source of local domestic tourism advertisement, to all people who will come to visit the ranch through wildlife vision, explanation from wildlife experts, posts, and other written which will be distributed free of charge to people who will come to visit the proposed ranch.
- i. To generate income for the owner, workers as they will be paid salaries and to the government through the revenue and other permits, this will be associated by establishment of the ranch project.

3.0 PROJECT IMPLEMENTATION PLAN

3.1 PROJECT STAFF

Kidunda Wildlife Ranch will employ someone to supervise the project as a project Manager who will ensure that all tasks are executed and timely submitted to the Directors. Project Manager as the project engineer is supposed to be a person with great experience in management of the projects of this kind. There will be also a project secretary with secretarial services skills and has experience in specified field to documents all minutes and confidential documents. An accountant officer who has a CPA profession and with full equipped knowledge on accounting and accounting packages to record all financial transactions according to the rules and procedure. There will be also a procurement officer with a wide range experience in procurement to make sure that any kind of procurement is abided with the rule and regulation of procurement process and a tourism information center (TIC) staff to provide basic information to visitors arriving in the facility. Each of the project personnel will be responsible and answerable in day to day execution of the duties as will be specified in their Job descriptions.

3.1.1 PROPOSED GOVERNANCE STRUCTURE



3.1.2 THE BOARD OF DIRECTORS:

The Board of Directors to lead and become the decision making team in the project will be formulated. This board/team of management is vital to lead the project to its succession point and to ensure that all technical and policy issues which need their attentions are accurately and timely addressed.

3.1.3 ACCOUNTING

- The project will hire a professional Accounting Officer to run all financial issues in updated manner so as to facilitate the whole activities much smoothly.
- In such preliminary focus, the project will hire the chief accountant to run the project and ensure all Accounting issues are well monitored and put into right track and ensuring that all financial report are well prepared for betterment of the project.
- For more efficiency and effective delivery of the services, the pet-cashier will be hired to assist the accounting officer on cashier cases and in doing so the procured items and financial transactions will be accordingly monitored.

4.0 PROJECT MONITORING, REPORTING AND EVALUATION

Monitoring ensures that planned activities are implemented; it will consider the attainment of planned activities for project completion regarding cost, duration and specification (standard). There will be monthly reports on financial and physical progress from the supervision team to the Directors.

5.0 PROJECT RISK ANALYSIS AND MITIGATION MEASURES

A project operation is sometimes risky, operations of the modern wildlife ranch and the information centre might face various risk that may affect its performance, sustainability and existence. Therefore the project will identify various critical risks that might affect the project, thus various mitigation measures will be in place in order to smoothly run the project as indicated in table below.

Table: Possible Project Risks Assessment and Management Strategies

Possible Risks	Mitigation Measures
Funds embezzlement	Proper funds management by making sure that expenditure is based on budget.
Environmental impacts	Compliance with the National Environmental Laws as will be stipulated in EIA report.
Fire Outbreak	Installation of fire extinguisher facilities and Fire brigade will be responsible.

Rise of price	Timely completion of project
Political Interference	Stakeholders Involvement including political leaders during Project inception for awareness creation
Security Risks	Deploy security company, security cameras(CCTVs), use visiting police office
Financial Risks	Inflation will be observed, exchange rate and economic recession.
Imitation Risks like fire, pollution and Sanitations	Outsourcing of Sanitation groups from private companies, Environmental education sensitization and the use of insurance.
Poaching of introduced wildlife	Deploy security company and internal security officers to patrol the Open ranch.
Dangerous animals	Surveillance will maintain the barrier between large mammals and people
Disease transmission	Veterinary measures to avoid disease transmission between wild animals and domestic animals will be taken.
Pollution control	Proper management of solid and liquid wastes will be maintained

6.0 TECHNICAL DETAILS OF ESTABLISHMENT OF OPEN WILDLIFE RANCH PROJECT

6.1 Description of the Species

Initially, the project proposes to introduce species on the natural habitat of land of large and medium sized herbivore that include Impalas, Zebra, Wildebeest, Buffalo and hartebeest and some carnivores such as Lion, leopard, hyaena, to mention some. The selection of these species consider their feeding behavior and tolerant to drought. Later on, species of reptiles and birds will be introduced at the proposed ranch. Selection of the species is based on their ability to generate public interest and adaptability to the captive environment. It is envisaged that more species will be added to the list as the ranch expands. Appendix 2 shows the description of some species that will be introduced in the ranch including habitat type and distribution in Tanzania, population status and trend, role in the ecosystem and threats to the population.

6.2 Adopted Methods of Farming

6.2.1 Methods with which the applicant will execute the project

The project will be restricted to the functions of a Ranch. Wild populations will be the primary source of animals for the ranch. Other sources will be animals to be obtained from the Ranch Exchange Programme (since the proposed ranch will join the international organization of ranch) or animals bought from elsewhere after following proper procedures. Permits will be obtained from the Tanzania Wildlife Management Authority to capture animals in the wild.

6.2.2 Capturing wildlife from the wild and transportation

Experienced personnel will be hired to capture animals using standard techniques as directed by the Tanzania Wildlife Management Authority. Animals will be captured, kept and transported in standard cages to the ranch as stipulated in the Wildlife Conservation Act No. 5 of 2009 (URT, 2009). Appropriate treatment and food will be provided to the animals on capture and in captivity. The proposed ranch will be partitioned into paddocks, each of which will be allocated to a certain category of animals. In the ranch, animals will be kept in standard dens, cages or nests to ensure they have enough living space according to requirements. The project will take precautions to ensure that all types of foodstuffs needed and of good quality are available all the time. Animal feed will either be reared within the farm or will be bought from reliable sources.

6.2.3 Transport arrangements

The project will have its own transport to be used in day-to-day operations of the ranch. There will be heavy-duty vehicles to be used in transporting animals from the wild to the ranch, and to transport food and other heavy materials. Four-wheel drive vehicles will be used in animal capture, carrying light equipment and for administrative purposes.

6.2.4 Water Supply

The project area will be connected with the available water system from boreholes which will be drilled in the project area according to requirements. A pumping station will be established and a pipeline will be constructed to supply water to all places required. In future, the project will explore possibilities of harvesting rainwater.

6.2.5 Food Supply

The food items comprising the diet of various species are shown in the Appendix 3. As most of the species have a diverse diet, their captive diet will include as many items from the wild as possible. For herbivores, plant items will be harvested from the neighborhoods where a huge stand of secondary vegetation is still intact. Vegetable supplements (e.g. carrots, sweet potatoes, cabbage, lettuce, etc.), fruit, grains, and bran will also be provided according to the species' requirements (Appendix 3). Vegetables will either be grown at the project's farm or requisitioned from reliable sources in the City. Salt licks, pet food, grains and bran will be bought from livestock supply stores. For insectivores, attempt will be made to collect the food items locally, while for carnivores, rabbits and chickens will be obtained from the project's farm. The feeding regime with respect to frequency and ration will vary according to the species, individual size, physiological status and quality of the food. With a few exceptions, most species will be fed daily (Appendix 3).

Since captive animals are known to be prone to nutritional disorders due to lack of minerals and vitamins in their foods, the supply of mineral and vitamin supplements will be made in order to simulate the animal's balanced diet in the wild. In addition, since the frequent supply of clean water is very important for some species, the proposed ranch will have an adequate provision of water for drinking and bathing.

6.2.6 Expertise

The project will hire a Veterinary Officer with a university degree to oversee the health of introduced wild animals. A graduate with a degree in wildlife management or a diploma from the College of African Wildlife Management, Mweka will be employed to be among the high-ranking officers in the project. Other people with skills in ranch management and animal care will also be employed.

6.2.7 Availability of veterinary services

The proposed project is well equipped with veterinary officers. The project has the financial capability to afford costs needed to cover veterinary services. The project will work closely with the nearby Veterinary Investigation Centre (VIC) at DSM City when there is a disease outbreak or an expert investigation is required.

7.0 FUTURE PLANS OF THE PROJECT

7.1 Construction plans

The construction phase is expected to use about Tshs. 500,000,000/= . The project area will not be fenced and will be designated exits placed in appropriate sites for open ranch. Partitions will include areas for settlement, offices, education and visitor information centre; children play ground, gift shop, and areas for animal paddocks, dens, enclosures, roads and pavements. Partitions will ensure that incompatible species are not placed in the same area.

Initial plans will involve survey of the area to establish natural habitat potentials and its suitability to different animal species. This will be done with the integrated team from A- Class Wildlife Ranch and the Ministry of Natural Resources and Tourism, particularly from TAWA (Tanzania Wildlife Management Authority). Each species will be allocated adequate space to ensure successful survival and breeding. Naturally occurring species will be managed first followed by species, which are readily available and easy to capture and keep. Systematic introduction of species will follow the niche concept to avoid competition among the species, which will be free ranging in the farm. Species will be introduced in such a manner that available habitat will be optimally utilized and in a way that will provide a sensible combination of species, both in terms of species diversity and economic interest of the project. Spatial location of partitions will take into consideration species to be introduced in future by leaving space to allow for construction of new enclosures. Most structures will be permanent and secure for security reasons. Animal dens, enclosures, nests and cages will be designed in accordance with species requirements, specifications provided by the wildlife department in the Wildlife Conservation Act (URT, 2009) and experience from other ranch, ranches and animal farms. Extreme care will be exercised not to keep or confine animals in an environment, which will cause them stress, reduce their survival rate or suppress their breeding capability.

8.0 PRODUCTION MARKETING AND TRADE

8.1 Production plans for species

The primary purpose of establishing and keeping animals in the ranch is for commercial purposes; therefore, the project has no production plan for species to be kept in the ranch. However, the project will create an environment, which will allow animals in the ranch to breed and the offsprings will be used in ranch animal exchange programme. Moreover, the project will arrange with TAWA for possibilities of selling bred animals to foreign or local markets.

8.2 . Potential markets and pricing

Currently, no survey has been made to explore the market for captive breed animals. However, when it comes to the opinion of the government that captive bred animals can be sold in other countries (because currently there is a ban in live animal trade) or other forms of utilization like establishing butchers for wild meat (as of now that butchers can be established) A - Class Wilflife Ranch will switch to the same depending on the available stork. Any off take of an animal from the wildlife facility/breeding farm will abide to the existing laws and regulations.

8.3 Economic aspects

8.3.1 Impact on government revenues

The project will pay all annual fees and taxes to the government such as income tax, license and fees. Also, non-resident foreign visitors will bring in foreign exchange, which will improve the value of our local currency.

8.3.2 Benefits to communities adjacent to project surroundings

Local communities living in the area where the project is located are expected to benefit in various ways, as the prime objective of the Wildlife Policy is to encourage local communities' benefits from wildlife projects in their areas (URT, 2007). Income generation is one of the greatest benefit that is expected to local people through creation of employment, selling their products to visitors and other opportunities, which will lead to more income and hence improved standard of living.

8.4 Community involvement/benefits

Local people will have access to learn modern ways of keeping domestic animals and poultry, which will be kept in the ranch. Other benefits include selling different products to visitors, buying of some farm products from domestic animals and crops, which are locally available at reasonable price. Moreover, local schools and other schools will have an opportunity to visit the ranch for education and recreation purposes with affordable price

8.5 Record keeping and marking systems.

8.5.1 Marking

The animals in the ranch will not be marked by any marking technique. The relatively small numbers of animals of one kind that will be captured will reduce recognition problems to a minimum; it will be possible to know all the animals in the proposed ranch without marking them (Ashton, 1978; Mellor et al., 2004).

The animals will be identified by their species features, the sexes, and nick names; these are simple characteristics which will be easily explained by the ranch ecologists who will be working in the proposed ranch. Marking in wild animals has a lot of disadvantages and therefore it should be done only when it is necessary. Marking can affect the animals involved through, the act of marking itself, the wearing of the mark and the procedures required for observing the mark. Externally observable signs of stress include aggression, struggling or freezing behaviors, abnormal postures, vocalization or its absence, impaired grooming, altered activity patterns, shivering, altered breathing, change in skin

color and body temperature change which may also result into animal death. Due to the small number of animals per species in the proposed ranch animal marking is not necessary (Mellor et al., 2004).

8.5.2 Record keeping

Rigorous record keeping and reporting is a very important requirement by the TAWA. To ensure accuracy and proper record keeping in the ranch, there will be lagers be filled at the end of each month in the year. There will be specific files, for keeping special recorded sheets for any animal present in the ranch.

8.6 Environmental characteristics

The proposed project will be located at DOMA VILLAGE. The mean maximum and minimum temperatures are 31.3 and 22.2°C, respectively. Annual rainfall being 1,150mm. The main vegetation types include shrubs, grasses and a natural forest. The wild species found in the area includes different species of insects, amphibians, reptiles, birds and large and small mammals. The local communities around are agro-pastoralists, cultivating crops such as maize, cassava and sweet potatoes and livestock keeping

9.0 REFERENCES

Ashton, D. G. (1978). Marking ranch animals for identification. In *Animal Marking* (pp. 24–34). London: Macmillan Education UK.

Mellor, D. J., Beausoleil, N. J., & Stafford, K. J. (2004). Marking amphibians, reptiles and marine mammals: animal welfare, practicalities and public perceptions in New Zealand.

Northern Tourist Circuit National Parks, PhD thesis, Mzumbe University.

United Republic of Tanzania (URT). (1999). National Tourism Policy, Ministry of Natural Resources and Tourism, Tourism Division.

United Republic of Tanzania (URT). (2007). *The National Wildlife Policy*. Dar Esalaam: Government Printers.

United Republic of Tanzania (URT). (2009). *The Wildlife Conservation Act No.05 of 2009*. Dar es Salaam: Government Printers.

<https://weather-and-climate.com>