



BUSINESS PLAN

**WAREHOUSE SOLUTION
PROJECT IN MTWARA**

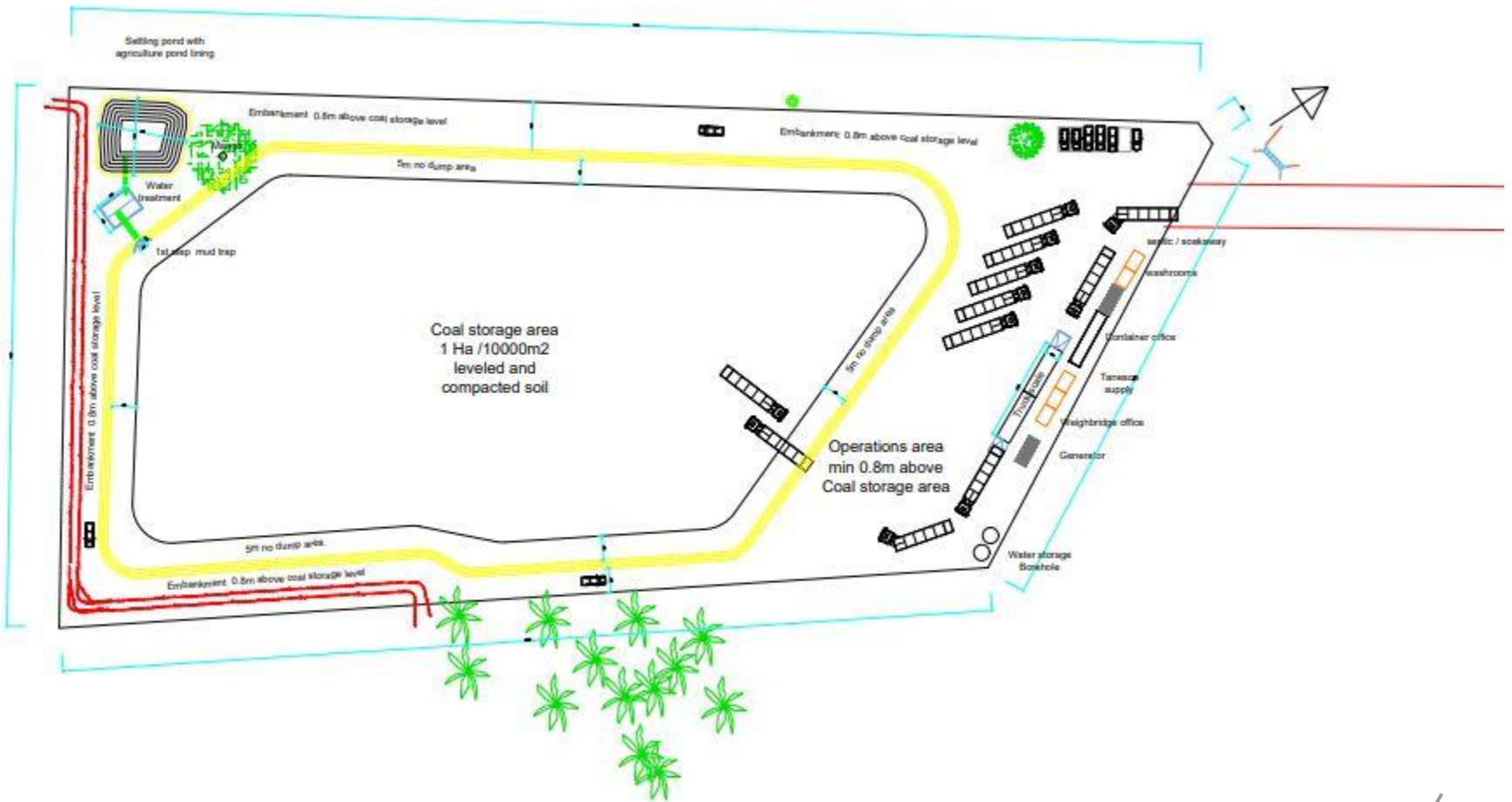
STATEMENT OF PROJECT OBJECTIVE

There is an opportunity to stockpile and store coal for export purposes in Mtwara region, the coal is mined in Songea and transported to Mtwara awaiting to be exported in International markets through Mtwara port.

Alistair James Company Limited saw the opportunity and is looking to store coal in a land purchased in Mtwara municipality, Mtepwezi Block A plot numbers 17,18 and 19 measuring 21,936sqm.

Alistair will be storing coal from various clients who are the traders or owners of the said coal.

PROPOSED COAL STORAGE FACILITY DRAWING





COMPANY OVERVIEW

ALISTAIR GROUP

LOGISTICS. SIMPLIFIED.

Since 2008, Alistair Group has gone from strength to strength, growing quickly in both its geographical coverage and variety of services offered to clients. Today, Alistair Group is proud to be one of the preferred logistics providers in the South and East African regions. As an asset-based organization, we make our clients' businesses work better by self-delivering fully integrated, end-to-end logistics solutions to our customers.

VISION

To be known as the company who makes Africa work better.

MISSION

To enable our customers to work better.

ACCREDITATIONS



OUR TEAM



Alistair James
Managing Director



Nuno Timoteo
Group Business Development Lead



Daniel Duplooy
Head of Warehousing



ALISTAIR GROUP



Tanzania | Mozambique | Kenya
Zambia | Uganda | South Africa
Democratic Republic of The Congo
Namibia | Mauritius



ALISTAIR GROUP

▶ INNOVATION & TECHNOLOGY

At Alistair Group, we are committed to bringing the most innovative solutions to Africa by leveraging new technology to make clients' businesses work better. We provide clients with customised, user-friendly solutions to simplify the logistics process.

- STATE OF THE ART CLIENT REPORTS
- AUTOMATED TRIP MANAGEMENT
- INTEGRATIONS WITH MOBILE MONEY PROVIDERS
- CENTRALISED CLIENT DOCUMENT STORAGE
- PAPERLESS AUDIT CHECKLISTS
- GLOBAL MAINTENANCE REPORTING
- PROPRIETARY TELEMATICS SYSTEM



▶ CUSTOMER DASHBOARD

Alistair Group provides clients with an industry-leading reporting system to enable you to track the real time status of your shipments.

Why our system stands out above the rest:

- USER-FRIENDLY SYSTEM
- FULLY CUSTOMIZABLE AS PER YOUR REQUEST
- INCREASED VISIBILITY OF YOUR CARGO
- SEE THE PROGRESS OF YOUR SHIPMENTS
- 24/7 CARGO TRACKING
- 24/7 CUSTOMS CLEARANCE TRACKING
- ACCESS TO IMPORTANT DOCUMENTS
- ACCESS REPORTS FOR DELIVERED CARGO
- SECURE PLATFORM

ALISTAIR GROUP

The group self-delivers a variety of logistics solutions with core competencies in the following:



Transport



Clearance &
Forwarding



Warehousing &
Logistics



Trading



Sub-Contracting

INDUSTRIES WE SERVE

Oil & Gas | Mining | Agriculture | Construction | Renewables | Explosives



TRANSPORT

Alistair Group is an expert at providing multi-modal transport solutions and have grown from a trucking company to a fully integrated logistics services provider. We are proud to provide our clients with reliable, safe and cost-effective transport solutions. From short to super-long-haul runs, shipping full container loads and chartering solutions, you can count on us to make the move.

Our transport services include:

- Multi-Modal Transport
- Road, Rail, Sea and Air Freight
- General and Abnormal Loads
- Hazardous Material
- Rig Moving
- Super Long Haul
- Route Surveys

CUSTOMS CLEARANCE

When it comes to customs clearance and freight forwarding, Alistair Group offers your business a one-stop solution. We have gained a reputation for being amongst the timeliest and customer focused freight forwarders in the market. Our efficient integration of services means that we control the entire supply chain and cut out unnecessary mark-ups and middle-men, saving you time and costs.

Our clearance services include:

- International Freight Forwarding & Clearing
- Customs Clearance
- Permits & Exonerations
- Worldwide Freight Forwarding
- Road, Rail, Air & Sea Freight



WAREHOUSING

Whether it is import, export, standard handling, storage in bonded or other speciality customs facilities, Alistair Group has the solution for you. Alistair Group exceeds the expectations of a warehousing service provider, by providing increased visibility of your cargo and real-time monitoring from loading to export, and beyond. As a multifaceted company, Alistair Group integrates its services and relies on its own expertise such as clearing & forwarding to save costs and optimize efficiency.

Warehousing Locations:

- DAR ES SALAAM, TANZANIA
- MTWARA, TANZANIA
- FREEPORT, TANZANIA
- NDOLA, ZAMBIA
- TEMANE, MOZAMBIQUE
- PEMBA, MOZAMBIQUE
- PALMA, MOZAMBIQUE
- MAPUTO, MOZAMBIQUE
- JOHANNESBURG, SOUTH AFRICA
- DURBAN, SOUTH AFRICA
- WALVIS BAY, NAMIBIA

**New facilities opening soon!*

Our warehouse services:

- Bonded & Non-bonded Facilities
- Stuffing & Destuffing
- Port Handling / Clearance
- Stock Management
- Import & Export of cargo
- Storage & Distribution
- Ships Agency
- Warranting
- Cutting & Packing
- Consolidation



TRADING

Alistair Group boasts a logistics chain that ensures the reliable delivery of sulphur to Sub-Saharan Africa customers and markets. We ensure an endless supply of quality graded granular sulphur available on your doorstep.

Our logistics chain includes:

- Sourcing & Procurement
- Supply Chain Management
- Transport
- Storage & Clearance

Accreditations: Alistair Group is registered and licensed with various local and international bodies where we operate for importation, storage and transportation of dangerous goods. We are registered and approved by ZEMA (Zambia), GCLA (Tanzania) and International Cyanide Management Institute (USA). Alistair Group is an ISO 45001, ISO 9001 and ISO 14001 certified company.

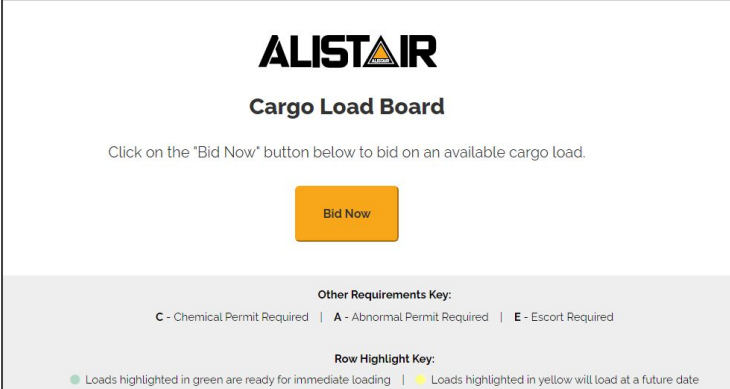


SUBCONTRACTING (SCT)

Providing first class cross-border freight services in Southern Africa utilising quality subcontractors that have been vetted and meet Alistair Group ISO standards. We offers a first-class service that is both safe and affordable.

Alistair Group's SCT division prioritises the relationships with our clients and subcontractors. We pride ourselves on relationship building to ensure sustainable growth across all entities. This is a long-term strategy for the growth of the division.

- **15** Blue-Chip Clients
- **62** fully vetted transporters
- **>1000** vehicles available year-round
- **> 300** trips per month
- **>9000** tons moved monthly
- *Available corridors: Walvis Bay, Durban, Dar es Salaam*



The screenshot shows the Alistair Cargo Load Board interface. At the top, the Alistair logo is displayed above the title "Cargo Load Board". Below the title, a text prompt reads: "Click on the 'Bid Now' button below to bid on an available cargo load." A prominent orange "Bid Now" button is centered on the page. Below the button, there is a section titled "Other Requirements Key:" with three items: "C - Chemical Permit Required", "A - Abnormal Permit Required", and "E - Escort Required". Below that is a "Row Highlight Key:" section with two items: a green dot for "Loads highlighted in green are ready for immediate loading" and a yellow dot for "Loads highlighted in yellow will load at a future date".



INVESTMENT COST

Expected Capital Expenditure

S/N	PROJECT	INVESTMENT AMOUNT
1	LAND PURCHASE	\$95,183
2	CONSTRUCTION COST	\$200,000
3	LICENSE AND REGISTRATION COSTS	\$7000
4	OTHER ASSOCIATED COSTS	\$7000
	TOTAL	\$309,183

FINANCIAL PROJECTION FOR THE NEXT 5 YEARS

	Capacity(MT) /Quantity	Rate \$ per day	Rate \$ per month	Amount \$ per year
Storage (MT)	20000		1	240000
Front End Loader Rental	1	365	10950	131400
Front End Loader Fuel	1	191	5730	68760
Operator (Acc & Meals)	1	25	750	9000
Mobilization and Demobilization (once off)	1	4500	4500	4500

IMPLEMENTATION PLAN

As per attached implementation schedule, we are under construction at the moment but have gradually began putting in important infrastructure to support Coal storage that has already commenced.

ENVIRONMENTAL IMPACT ASSESSMENT

Alistair James Company Limited has successfully done Environmental Impact Assessment with 90% completion rate, the company now awaits finalization of derivative rights of the purchased land from TIC in order to acquire the certificate. In the meantime NEMC has given the company special permit to stockpile coal for a month time.

EXPECTED EMPLOYMENT GENERATION

Since the project is permanent and requires man power to succeed, Alistair is expecting to employ more than 10 employees in the site to work with an aim of making the group work better and efficiently.



THANK YOU!

Info@alstairgroup.com | +255 785750761



ALISTAIR