



Kaderes Peasants Development Public Limited Company
KPD PLC, P.O. Box 84, Karagwe, Tanzania
Tel.: +25528 2227114,
kachebonaho@hotmail.com and kadereskaragwe@yahoo.com
www.kpdcoffee.com

BUSINESS PLAN FOR ESTABLISHMENT
OF
KITWE COFFEE PROCESSING FACTOR
AT
KYERWA DISTRICT - KAGERA REGION

*KADERES PEASANT DEVELOPMENT PUBLIC LIMITED COMPANY
P. O. BOX 84, KARAGWE, KAGERA TANZANIA*

KADERES PEASANTS DEVELOPMENT PLC
KPD - PLC
P.O BOX84
KARAGWE
KAGERA

BUSINESS PLAN FOR ESTABLISHMENT OF KITWE COFFEE PROCESSING FACTORY

PROJECT DOCUMENT SUMMARY

1.0. TITLE OF PROJECT:	: Establishment of Kitwe Coffee Processing Factory and provision of Working Capital			
2.0. APPLICANT	: M/S KADERES PEASANTS DEVELOPMENT PLC (KPD – PLC)			
3.0. CONTACT ADDRESS	: P.O. Box 84 Mobile: 0754 754655 0689 585190 Kayanga Town Karagwe District KAGERA REGION			
4.0 OFFICE LOCATION	: Head Office Plot No.91/93 Block G Kaisho Street, Kayanga Town Karagwe District. KAGERA REGION			
5.0 PROJECT LOCATION	: Kitwe Area Kyerwa District KAGERA REGION			
6.0 FINANCING PURPOSE	: CAPEX and working Capital for (a) Construction of Factory Building, Warehousing and offices (b) Working capital for Coffee Purchases (c) Setting up machinery and Equipment for coffee processing factory			
7.0 PROPOSED BUDGET	ITEM DESCRIPTION	BANK LOAN USD	EQUITY USD	TOTAL USD
	Coffee machinery and Equipment	580,000.00	0.00	580,000.00
	Other Machinery and Equipment	142,200.00	0.00	142,200.00
	Buildings	850,200.00	200,000.00	1,050,200.00
	Furniture and Fittings	17,750.00	5,000.00	22,750.00
	Motor Vehicles	181,940.00	0.00	181,940.00
	Pre- Operational	10,000.00	8,300,000.00	18,300.00
	Working Capital	4,570,000.00	0.00	4,570,00.00
	TOTALS	6,352,090.00	213,300.00	6,565,390.00
8.0 IMPLEMENTATION PERIOD	(a) Funds Approval and Project Registration	August – September 2023		
	(b) Plant and Machinery Importation	September 2023		
	(c) Building Construction	September – October 2023		
	(d) Plant and Machinery clearance and Installation	October 2023		
	(e) Commissioning	November – 2023		

**BUSINESS PLAN FOR KITWE COFFEE PROCESSING
FACTORY KYERWA, TANZANIA**

KADERES PEASANT DEVELOPMENT PUBLIC LIMITED COMPANY
P. O. BOX 84, KARAGWE, KAGERA TANZANIA

LAND LINE +255282227114/ +255282222106
EMAIL kadereskaragwe@yahoo.com

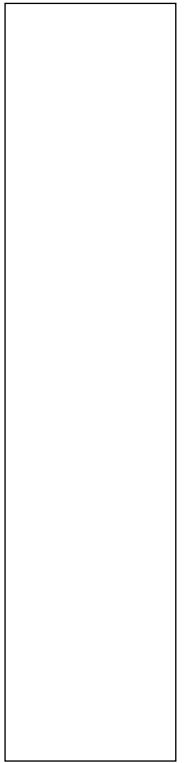


Table Of Contents

Table Of Contents	1
1.0. EXECUTIVE SUMMARY	3
1.1 Introduction.....	3
1.2 The Business	3
1.3 The Company.....	3
1.4. Financing Required	3
1.5 Loan Security.....	3
2.0 THE COMPANY:	4
2.1 Company Ownership.....	4
2.2 Company History.....	4
2.3. Achievements/ Important Milestones	4
2.3 Networking and collaboration with farmers.	5
2.4 Fairtrade and Organic coffee certification	5
2.5 Asset Base Growth	5
2.6 Organization structure and Management Team	5
3.0 PRODUCTS	6
3.2 Coffee Production in Tanzania.....	6
3.3 Coffee Production in Kagera Region	6
Dry Cherry Purchases From 2018-19 To 2020-21 (In Kgs).....	6
3.4 The Coffee Season 2022/2023	7
3.5 Planned Target for 2024/2025	7
3.6 Strategy for Coffee Collection 2024/2025.....	7
3.7 Production Forecast.....	7
3.8 Factory capacity	7
1.0. THE PROJECT DESCRIPTION.....	9
5.0. MARKETS AND MARKETING	10
5.1. Markets for Green Coffee Beans.....	10
A list of our reliable and trusted coffee buyers includes the following :-.....	10
5.2. Markets for Green Coffee Beans.....	10
6.0. MANAGEMENT AND ORGANISATION	12
6.1 Organization structure and Management Team	12
6.2. ORGANISATION CHART	13
7.0. FINANCING REQUIREMENT	14
7.1 The Business Proposal:	14
7.2Need for Credit Facilities:.....	14
8.0. FINANCIAL PROJECTIONS	14
8.1 Important Assumptions.....	14
8.2 Cherry Coffee Purchases	14
8.3 Sales Projections	14
8.4 Cash Flow Projection Year 2024/2025	15
8.5 Projected Income Statement	15
8.6 Projected Statement Of Financial Position	15
9.0. SOCIAL ECONOMIC CONTRIBUTIONS.....	16
10.0. RECOMMENDATION	17
ANNEX III.....	18

	ANNEXES
I	CASH FLOW PROJECTION
II	DEPRECIATION SCHEDULE
III	LOAN REPAYMENT SCHEDULE
IV	PROJECTED FACTORY OVERHEADS
V	PROJECTED BALANCE SHEET

1.0. EXECUTIVE SUMMARY

1.1 Introduction

KPD Plc is a public limited company established in 2007. The main objective of the company is to facilitate stakeholder farmer to get fair prices for their products especially coffee by participating in the Fair Trade and Organic Coffee international markets. To achieve this objective the company operates in collaboration with member farmers through their AMCOS and owns two Coffee Processing Plants, one in Ndama, Karagwe and another one in Biharamulo where it processes Cherry coffee into Clean Coffee for export. Kyerwa District Council in its meeting on 13th August 2021, resolved that from 2022 coffee season, that is from 1st July 2022 no cherry coffee will be allowed to be transported from the district meaning that all coffee processing companies must establish coffee processing facilities within the Kyerwa District in order to be allowed to buy cherry coffee from the district.

The purpose of this business plan is to apply for a loan to finance the cost of establishing a Coffee Processing Plant in Kyerwa District, Kagera Region

1.2 The Business

The primary project business is that of processing cherry coffee to green coffee, but the complete business operation is divided into three segments as follows: Purchase of cherry coffee from farmers through their respective AMCOS and other cooperative societies.

Processing of cherry coffee at the factory to produce green coffee Sale of clean coffee to export markets and to small extent selling into local markets

Also, apart from coffee business as core and main trading, the company is also dealing with beans for both local and nearby foreign market

1.3 The Company

KPD Plc is a public limited company established in 2007 and registered as a Public limited company in 2010.

1.4. Financing Required

For the purpose of establishing a Coffee Processing factory in Kyerwa, the company requires a total of US Dollars 6,565,390 out of which US Dollars 6,352,090 shall be loan from local bank and US Dollars 213,300 shall be owners contribution details of which are given in this Business Plan.

1.5 Loan Security

Security for the loan to be discussed and agreed with the Financier but the company has sufficient assets to cover collateral requirements for the loan which will include factory buildings and machinery and first rank insurance cover.

2.0 THE COMPANY:

2.1 Company Ownership

KADERES Peasants Development Plc is a Public limited liability company incorporated in 2010 under the Companies Act, 2002 and registered by BRELA under Certificate of Registration No.63929. Its registered offices are located at Kayanga in Karagwe District

The Official Address of the company is :-

The Managing Director
KADERES Peasants Development Plc
P.O. Box 84, Karagwe - Kagera Region
Tel: +255 754 - 754 655
Email; kachebonaho@kpdcoffee.co.tz

2.2 Company History

KADERES Peasants Development Plc (KPD Plc) was established and incorporated in the year 2008 and issued with certificate of registration #63929. The company has an authorized share capital of TZS 500,000,000 divided into TZS 1000 each. Shares of the company are held as follows:

Share Holder	Number of Shares
Leonard Faustin Zimbeya Kachebonaho	650
Yusuf Twaibu Tibanyulula	100
Batreth Jacob Rwiguza	150
Longino Aloys Tibenda	100

Directors of the company are:

Name	Position
Leonard Faustin Zimbeya Kachebonaho	Chairman
Batreth Jacob Rwiguza	Secretary
Yusuf Twaibu Tibanyulula	Director
Longino Aloys Tibenda	Director

KPD Plc is registered with TRA with TIN No 106-910-731, Business license No BL 01464862023-2400000476 and is also registered with Tanzania Coffee board as Coffee Exporter with Coffee export license number TCB/DE/720

2.3. Achievements/ Important Milestones

KADERES Peasants Development Plc has come a long way from its humble beginnings. When looking at its history the following are some of the notable and glaring milestones of the company: -

It has been in existence for a period of over 13 years obviously it has gone through highs and lows, ups and downs to gain experience and strength to survive thus far.

2.3 Networking and collaboration with farmers.

KPD PIC is the only coffee processing company in Kagera which has successfully forged a working relationship with coffee farmers through their AMCO's. KPD has played a major role in the establishment of the AMCOs it is working with and has provided support and guidance to ensure the success of their business model.

The Seven AMCO's that KPD is working with were able to obtain direct financing of TZS 12.6 billion from CRDB bank for cherry coffee purchases from their members and other farmers in their areas for the processing in the KPD coffee processing factory.

2.4 Fairtrade and Organic coffee certification

KPD Plc has been able to get a certification in Fair Trade and organic coffee markets a process through which KPD in collaboration with the AMCOs it is working with has registered and created a network of organic coffee farmers who can now access niche organic coffee markets internationally and benefit from premium prices.

In 2017 the Government of Tanzania came up with a policy of not allowing private companies from buying coffee directly from the coffee farmers. KPD Plc was the only private company in Kagera allowed to buy coffee from farmers through their AMCOs and this was to a larger extent due to its close working relationships with farmers through their network of Fair Trade and organic coffee farmers.

2.5 Asset Base Growth

KPD Plc started from scratch in 2008 and of now has created and accumulated an asset base of approximately TZS 8 billion consisting of coffee processing factories and warehouses and buildings.

2.6 Organization structure and Management Team

KPD Plc has a team of qualified and experienced managers headed by the chairman and CEO as follows:

Name	Position
Leonard Faustin Kachebonaho	Chairman & CEO
Batreth Rwiguza	Head of Finance and Administration
Innocent Kokutuna	Products and Compliance Manager
Mpoki James Mwakalukwa	Business Development Manager
Khalfan Othuman	Factory Manager
Makelele Ernest	Sales & Export Manager
Ansbert Anacleth	AMCOs Liaison Manager
Wilbroad William	Accountant

The above managers are members of the Company Management Committee which collectively are responsible for setting company objectives and goals, plans for executing them, evaluation and monitoring to ensure successful achievement of set goals.

3.0 PRODUCTS

3.1 KPD Plc deals mainly and solely in coffee as follows:

- Purchasing of cherry from farmers through their AMCOs
- Processing of cherry coffee to produce green coffee which is now a marketable product
- Export of organic certified green coffee
- Export of conventional green coffee

3.2 Coffee Production in Tanzania

Coffee is one of Tanzania's primary agricultural export commodities accountings for about 5% of total exports value and generating export earnings averaging USD 100 Million per annum over the last 30 years. The industry provides direct income to more than 400,000 farmer households thus supporting the livelihoods of an estimated 2.4 million individuals. Average yearly production over the past thirty years has stagnated at a level of about 50,000 tons, while yields have continuously decreased, and quality potential has not been fully exploited, thus contributing to low farm gate prices, and the development of rural poverty.

Of late however, Tanzania coffee production has almost doubled to four years high, thanks to good weather and high crop circle boom this season. Production is said to have jumped to 65,500 metric tons in 2018 / 19 season. Considering the existing opportunities on the international market and the excellent quality potential at the country level (including Mild Arabicas as well as Robustas; Tanzania it is said would face very few difficulties in selling larger coffee volumes at highly remunerative prices provided production is increased.

3.3 Coffee Production in Kagera Region

Data on coffee production in Kagera region is not readily available. However the compny has compiled its data of coffee purchases from different wards in Karagwe and Kyerwa Districts for the last three years as follows :-

Dry Cherry Purchases From 2018-19 To 2020-21 (In Kgs)

AMCOs	2018-19	2019-20	2020-21
Kikamabu	1,554,177	1,791,255	2,634,198
Kiruruma	729,406	840,671	1,236,281
Kituntu Igurwa	595,753	686,631	1,009,751
Bushangaro	550,137	634,056	932,436
Ndama	478,506	551,498	811,027
Kairu	228,082	262,874	386,580
Kishojo	-	-	371,727
Juhudi	168,311	172,326	-
Mkombozi	260,203	252,774	-
Total	4,564,575	5,192,086	7,382,000

3.4 The Coffee Season 2022/2023

In 2020-21, the company improved its plans and systems which pushed the production volume from around 4,000 tons cherry coffee to 7,382 metric tons. The above table shows the total purchases of dry cherry by warehouse in 2020-21. The main KPD warehouses in Ndama factory, Kayanga are managed by Brent Intertrade Company Limited. KPD Plc receives coffee from AMCOs to the dry-processing factory.

3.5 Planned Target for 2024/2025

Coffee production in Kyerwa District is estimated to be about 40,000 MT per annum. From the current situation in the farms, it is expected that the next coffee season will be a bumper harvest season. It is therefore planned that the company will purchase 12,000 tons of Cherry coffee from Kyerwa District alone which is about 30% market share of the coffee from Kyerwa District.

3.6 Strategy for Coffee Collection 2024/2025

Again, the usual channel for coffee collection will be used and that is through AMCOS and Cooperative Societies in Kyerwa District. For the purpose of expanding its cherry coffee source channel beginning October 2023 the company will embark on a campaign to enlist new farmers through their AMCOS for Fair Trade and Organic certified Coffees, to train the farmers on organic coffee farming and to educate them on the advantages of being registered organic coffee farmers. Preliminary discussions with AMCOS have already begun and prospects are very good. This system will ensure that the company has an advantage on coffee collection when the season begins.

3.7 Production Forecast

The figures for 2020-21 give the basis for future years, with adjustments. In 2020-21, 5,993 farmers sold 7,382 tonnes of dry cherry (Cherry) coffee to KPD, and KPD processed this over 4,000 tons of clean coffee (55% outturn). Less than 1% was arabica and more than 99% was Robusta, but the actual production in Kyerwa is over 71% Robusta, so we have used that figure for future years.

The KPD target membership is 15,000 farmers in 2024-25. If each member delivers an average of 1,455 kgs of Cherry coffee, as per 2020-21, this gives a requirement for factory processing capacity of more than 9 tonnes per hour of clean Robusta coffee. This is a large and expensive factory. Rather than start with a factory of this size, (which could become a white elephant if KPD's expansion plans are not realized), it would be prudent to start with a smaller factory and expand it as needed. We have therefore assumed that the membership will reach 12,000 by 2022-23, and that there will be two peak years between now and then. If these figures prove to be too conservative, KPD can add a new processing line to the factory once the volume requirement is there.

3.8 Factory capacity

The factory has to be capable of processing all the coffee purchased in a peak production year. 2020-21 was a peak production year where 7,382,000 kgs of Cherry was received equivalent to 4,060,100 kgs of clean coffee. The next coffee season is expected to be a bumper harvest which is why it has been estimated that the company will purchase 12,000 MT of Cherry coffee next season.

The season lasts for eleven months, but the peak production months are July to September. The coffee from these months is about 60% of the total coffee from the season. The factory needs the capacity to process the coffee from these months in a timely way.

Production forecast (tonnes)	
Farmers in 2024-25	12,000
Volume of clean coffee from AMCOs in 2022 (tonnes)	4,455
Average volume of clean coffee per farmer, tonnes	2.6
Forecast total production of clean coffee tonnes by 2022-23	4,455
Robusta	8,100
Arabica	486

4.0. THE PROJECT DESCRIPTION

This project Proposal entails and envisages on the establishment of a modern coffee processing factory at Kitwe area, Kyerwa District.

KADERES PEASANTS DEVELOPMENT PLC is looking for financial support amounting to **US Dollars 6,565,390 US Dollars Six Million, Five Hundred Sixty Five Thousands and Three Hundred and Ninety only** so as to enable the company undertake the followings main activities:-

- (a) To construct coffee processing factory buildings, warehouse and offices for **USD 1,050,200.00**
- (b) To purchase and install coffee processing machinery and equipment **USD 580,000.00**
- (c) To purchase other machinery and equipment and furniture's and Fittings USD 164,950.00
- (d) To purchase Motor Vehicles USD 181,940.00
- (e) Pre – operational costs USD 18,200.00
- (f) To provide a reliable and sustainable working capital for coffee purchases amounting to **USD 4,570,000.00**

The Government at District level in Kyerwa District has announced and directed that from the coming season 2022,(1st July 2021) Cherry coffee will no longer be purchased by any one and transported out of the District. Therefore the Government has encouraged companies to establish coffee processing factories in the District so as to enable green processed coffee be sold and transported out of the District as a requirement.

The aim is to retain money which has been lost in two ways, one lower price of cherry coffee and second is coffee processing fees paid to other factories outside the district.

In the light of this Government decision KPD PLC would like to take and utilize this economic advantage by establishing its own coffee processing factory at Kyerwa.

Kyerwa District is the largest producer of coffee in the whole of Kagera Region consisting of Five (5) Districts of which its annual production is estimated at 40,000 MT in higher peak seasons.

KADERES PEASANT DEVELOPMENT PLC is planning to purchase about 12,000 MT of Cherry Coffee from Kyerwa District alone for processing at its factory which account for about 30% of the market share in the district for the said coming Season

5.0. MARKETS AND MARKETING

5.1. Markets for Green Coffee Beans

Green Coffee produced will be marketed and sold using KADERES Peasants Development Plc which through its experience in coffee exports over the years it has managed to create a large base of reliable and permanent customers. It is therefore expected that all green coffee produced will be sold in advance and shipped immediately upon production.

It is worth pointing out that this season, 2021/2022, Brazil, the world largest coffee producer and supplier to the world market has suffered major draught coupled with severe frost which have greatly decimated its capacity to supply coffee in the market. This has resulted in a big gap in the supply chain causing demand for coffee to soar up and push prices higher. When this happens it normally takes a period of three years for Brazil to plant new crops and start harvesting again. This year however it is feared that climate change may have contributed to this bad weather for Brazil and therefore it is expected that the world will experience short supply and higher prices for some few years to come which is an advantage to countries like Tanzania

A list of our reliable and trusted coffee buyers includes the following :-

Sukafina	Switzerland
Touton SA	France
J, Wolf Company	BV Netherlands
Lavazza	Switzerland
Blazer Trading	Switzerland
Walter Matter	Switzerland
Tropicare International	Switzerland
Meo Fichaux	France
Ecom Agro Industries	Switzerland
Group Gimoka	Italy
Maison Quille	France
Olam International	Singapore
Mambo Coffee	Tanzania

5.2. Markets for Green Coffee Beans

Green Coffee produced will be marketed and sold using KADERES Peasants Development Plc which through its experience in coffee exports over the years it has managed to create a large base of reliable and permanent customers. It is therefore expected that all green coffee produced will be sold in advance and shipped immediately upon production.

It is worth pointing out that this season, 2021/2022, Brazil, the world's largest coffee producer and supplier to the world market has suffered major drought coupled with severe frost which has greatly decimated its capacity to supply coffee in the market. This has resulted in a big gap in the supply chain causing demand for coffee to soar up and push prices higher. When this happens it normally takes three

years for Brazil to plant new crops and start harvesting again. This year however it is feared that climate change may have contributed to this bad weather for Brazil and therefore it is expected that the world will experience short supply and higher prices for a few years to come which is an advantage to countries like Tanzania

A list of our reliable and trusted coffee buyers includes the following:

Name of Company	Country of Origin
Sukafina	Switzerland
Touton SA	France
J. Wolf Company	BV Netherlands
Lavazza	Switzerland
Blazer Trading	Switzerland
Walter Matter	Switzerland
Tropicare International	Switzerland
Meo Fichaux	France
Ecom Agro Industries	Switzerland
Group Gimoka	Italy
Maison Quille	France
Olam International	Singapore
Mambo Coffee	Tanzania

Ownership of Coffee factories

KPD PLC purchased a coffee processing factory from **OLAM INTERNATIONAL** in the year 2021 located at Bunazi Area, Misenyi District with a capacity to process 15,500 MT annual.

Before the purchase of the said factory, also KPD PLC has been managing and owning another factory located at Ndama area, Karagwe District.

On top that, KPD also owns a small scale factory at Muleba District.

Therefore, the purchase and establishing the requested factory at Kyerwa will be the third largest for the company.

6.0. MANAGEMENT AND ORGANISATION

The ultimate authority in the operations of the company is vested in the Board of Directors which is responsible for establishing company Vision, Mission and Values. It is the board that sets company goals and strategy for achieving the objectives. The Board through its meetings supervises Management to ensure that operations are in line with the set goals and that the company achieves set profit targets and meets all its other obligations.

The authority for day-to-day operations of the company is vested in the Chief Executive Officer (CEO) The CEO is responsible for all activities of the company. The CEO is assisted in his role by Departmental Managers who work under his supervision and report to him on a regular basis.

6.1 Organization structure and Management Team

KPD Plc has a team of qualified and experienced managers headed by the chairman and CEO as follows:

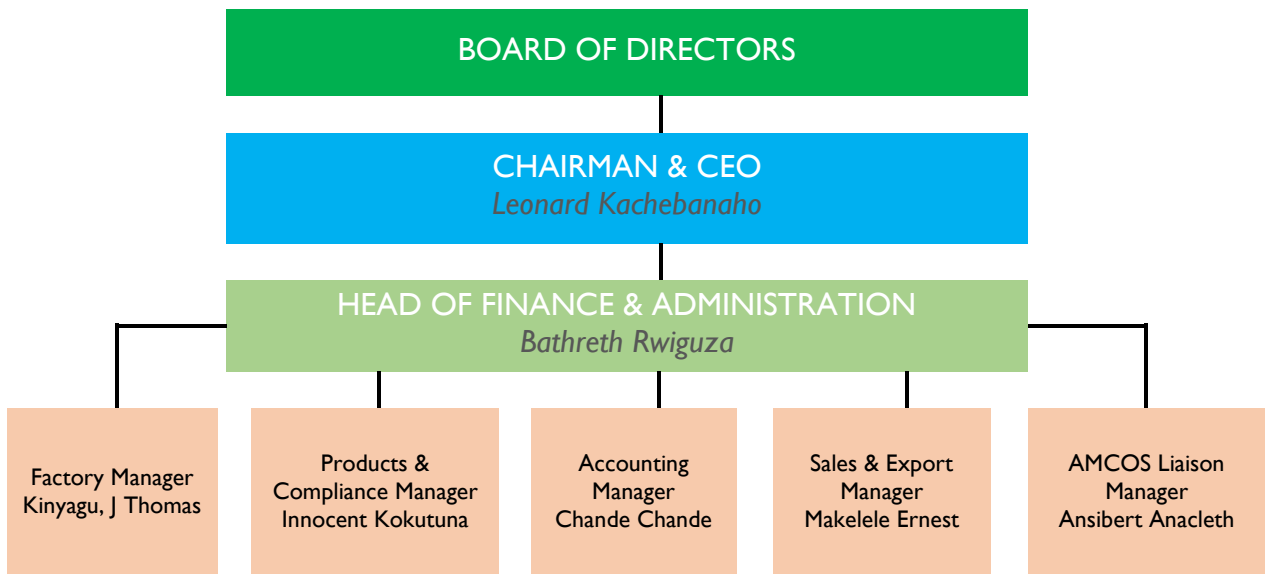
Name	Position
Leonard Faustin Kachebonaho	Chairman & CEO
Batreth Rwiguza	Head of Finance and Administration
Innocent Kokutuna	Products and Compliance Manager
James Mwakalukwa	Business Development Manager
Khalfan Othuman	Factory Manager
Makelele Ernest	Sales & Export Manager
Ansbert Anacleth	AMCOS Liaison Manager
Chande Chande	Accounting Manager

The above managers are members of the Company Management Committee which collectively are responsible for setting strategies to achieve set company objectives and goals, plans for executing them, evaluation and monitoring to ensure successful achievement of set goals.

6.2. ORGANISATION CHART

The company organization structure is as follows

KADERES PEASANTS' DEVELOPMENT PLC Organization Chart



7.0. FINANCING REQUIREMENT

7.1 The Business Proposal:

KADERES PEASANTS' DEVELOPMENT PLC proposes to mobilize a credit facility of TZS 1,782,090 (US Dollars One Million Seven Hundred Eight Two Thousands and Ninety only) from a Financial Institution for purpose of establishing the proposed Kyerwa Coffee Processing Plant to comply with the Kyerwa District Resolution that all coffee harvested in the district must be processes in the district and another USD 4,570,000 (US Dollars four Million Five Hundred and Seventy Thousands) as overdraft for the purchase of Cherry coffee.

The loan for the CAPEX is proposed to be repaid over five (5) years period in monthly instalments, at an interest rate of 11% on a reducing balance as per NMB KILIMO ACCOUNT Special Interest rate.

7.2 Need for Credit Facilities:

The proposed borrowing in term loan and Overdraft is aimed at achieving the following business objectives.

- To ensure that the project is fully implemented ready for business starting 2024/25 coffee marketing season.
- To purchase and process the planned 12,000 tons of cherry coffee from farmers in Kyerwa District for processing into clean coffee for export.
- To support the government in increasing job creation and foreign exchange through increased processing of cherry coffee from farmers in Kyerwa District for export

8.0. FINANCIAL PROJECTIONS

8.1 Important Assumptions

Financial projections which are part of this Business Plan have been prepared on the basis of the following assumptions: -

8.2 Cherry Coffee Purchases

It is expected that next coffee season year 2024/2025, will be a bumper coffee harvest. The company plans to buy 12,000 MT of cherry coffee from within Kyerwa District, estimated purchase price of TZS 1,400/- per kg as it was the case in 2022/2023 season. The purchase period is expected to run from July 2024 to December.

8.3 Sales Projections

It is expected that the volume of coffee purchases 12,000MT will result into a turnout ratio of 56% producing 6,720 tons of clean coffee into the following grades and estimated prices. Figures given below are monthly estimates for a period of six months, July to December when the main coffee season end.

Screen	%	Qty	Price (\$)	Amount	
				\$	Tsh
Screen 18 (Extra)	9%	67,200	84	112,896	261,354,240
Screen 16 (Sup)	40%	298,667	82	489,815	1,133,921,725
Screen 14 (Std)	38%	283,733	78	442,623	1,024,672,245
Screen 12 (UG)	10%	74,667	72	107,519	248,906,485
TR	3%	22,400	55	24,640	57,041,600
TOTAL	100%	746,667		1,177,493	2,725,896,295

Exchange rate: 1 USD \$ = TZS 2,5050

8.4 Cash Flow Projection Year 2024/2025

Cash Flow projection show that the company will require an Overdraft of USD **4,570,000** at the beginning of financial year **2024/2025** but cash inflows are so health that at the end of the financial year the company will have a good cash balance.

8.5 Projected Income Statement

Projected Income Statement show that the company will make an after-tax profit of **USD 677,985** from sale of Clean Coffee in the season 2024/2025

8.6 Projected Statement Of Financial Position

- Projected Statement of Financial Position at the end of the year to have a total Net Assets of **USD 5,606,319** at the end of the financial year 2024
- Projected expenses such as Factory Overheads, Selling Expenses, Administrative Overheads are given on Schedule 4 to 8.
- Fixed Assets and Depreciation of Fixed Assets is given on Schedule 10
- Loan Repayment with interest is given on Schedule 9

9.0. SOCIAL ECONOMIC CONTRIBUTIONS

The business will have the following social economic contributions: -

- The business will contribute directly to the country social economic development by paying various taxes such as corporation tax, payroll taxes, Government CESS and levy etc
- The company will offer permanent employment to approximately 25 people and over 200 casual employees will be engaged during the coffee season
- The company will spend over TZS 300,000,000 annually in direct and indirect wages and salaries thus contributing to the cash flow in the economy of Kyerwa District and Kagera Region boosting the economic growth, small businesses development and uplifting the social economic status of the districts and the Region.
- The company will make various contributions into development efforts in Kyerwa District and the Region from time to time

10.0. RECOMMENDATION

The Business Plan together with the financial projections show that the business is financially viable and profitable and capable to meet its financial obligations. It is recommended that financial assistance sought be approved and made available for the company to carry out its plans.

RECOMMENDATION

ANNEX I

CASH FLOW PROJECTION

KADERES PEASANT DEVELOPMENT PLC (KPD Plc)

CASHFLOW PROJECTION FOR TWELVE MONTHS DECEMBER , 2023 ENDING NOVEMBER ,2024 US DOLLARS

ALL FIGURES ARE IN USD													
Particulars	Dec-23	Jan-24	Feb-24	Mar-24	Apr-24	May-24	Jun-24	Jul-24	Aug-24	Sep-24	Oct-24	Nov-24	Total
Cash Inflows													
Sales Clean Coffee	129,422	129,422	129,422	754,961	133,736	129,422	129,422	129,422	388,266	280,414	129,422	129,422	2,592,752
Other Income - Sales of Beans	140,062	142,163	144,296	146,460	148,657	150,887	153,150	155,448	157,779	160,146	162,548	164,986	1,826,584
CRDB - Overdraft Facility	-	-	-	-	-	-	-	-	-	-	-	-	0
Total Cash Inflows	269,484	271,585	273,718	901,421	282,393	280,309	282,572	284,870	546,045	440,560	291,970	294,408	4,419,336
													-
													-
Cash Outflow													
Purchase of coffee	-	-	-	-	801,802	195,668	-	-	364,386	312,142	206,765	207,101	2,087,864
Purchase of beans	182,070	187,509	183,675	175,766	-	-	182,246	183,540	105,896	-	-	-	1,200,702
Polybags	3,236	4,314	6,471	6,471	6,471	6,471	2,157	-	-	2,157	1,079	-	38,827
Collateral Management	906	906	906	906	906	906	906	906	906	906	906	906	10,871
Other Direct Expenses	539	539	539	539	539	539	539	539	539	539	539	539	6,471
Postage	97	97	97	97	97	97	97	97	97	97	97	97	1,165
Communication	11	11	11	11	11	11	11	11	11	11	11	11	129
Processors/Labours	4,314	4,314	4,314	4,314	4,314	4,314	4,314	4,314	4,314	4,314	4,314	4,314	51,769
Machine Repairs & Maintenance	863	863	863	863	863	863	863	863	863	863	863	863	10,354
Transportation /Hiring Vehicles	2,157	2,157	2,157	2,157	2,157	2,157	2,157	2,157	2,157	2,157	2,157	2,157	25,884
Fuel for Trucks	647	647	647	647	647	647	647	647	647	647	647	647	7,765
Sheeting and Pallets,Protective gears	173	173	173	173	173	173	173	173	173	173	173	173	2,071
Agency Commissions	17,688	17,688	17,688	17,688	17,688	17,688	17,688	17,688	17,688	17,688	17,688	17,688	212,252
Electricity	1,079	1,079	1,079	1,079	1,079	1,079	1,079	1,079	1,079	1,079	1,079	1,079	12,942
Stationary and Printing	216	216	216	216	216	216	216	216	216	216	216	216	2,588
Insurance Bulgary,fireand Bulgars and Workers	-	-	-	-	5,177	-	-	-	-	-	-	-	5,177
Sundry Expenses (Husks)	-	-	647	647	647	647	647	647	647	647	647	647	6,471
Trucks Insurance	173	173	173	173	173	173	173	173	173	173	173	173	2,071
Trucks Repair and maintenance	647	647	647	647	647	647	647	647	647	647	647	647	7,765
Sub Allowances	173	173	173	173	173	173	173	173	173	173	173	173	2,071
Security Services	2,157	2,157	2,157	2,157	2,157	2,157	2,157	2,157	2,157	2,157	2,157	2,157	25,884
Cess Paid to Local Council	5,662	5,662	5,662	5,662	5,662	5,662	5,662	5,662	5,662	5,662	5,662	5,662	67,947
Export permits	2,373	2,373	2,373	2,373	2,373	2,373	2,373	2,373	2,373	2,373	2,373	2,373	28,473
Freight and Handling	647	647	647	647	647	647	647	647	647	647	647	647	7,765
Clearing and Forwarding	4,422	4,422	4,422	4,422	4,422	4,422	4,422	4,422	4,422	4,422	4,422	4,422	53,063
Export Bags	4,584	4,584	4,584	4,584	4,584	4,584	4,584	4,584	4,584	4,584	4,584	4,584	55,004
Fair Trade and Workshops	647	647	647	647	647	647	647	647	647	647	647	647	7,765
Organic Certification Meeting and Workshop	647	647	647	647	647	647	647	647	647	647	647	647	7,765
Rent	173	173	173	173	173	173	173	173	173	173	173	173	2,071
Legal fees	367	367	367	367	367	367	367	367	367	367	367	367	4,400
Taxes	388	388	388	388	388	388	388	388	388	388	388	388	4,659
Other Gen & Admnistration	539	539	539	539	539	539	539	539	539	539	539	539	6,471
Professional Fees	367	367	367	367	367	367	367	367	367	367	367	367	4,400
Audit fee	367	367	367	367	367	367	367	367	367	367	367	367	4,400
Local Transport/Visitors fee	173	173	173	173	173	173	173	173	173	173	173	173	2,071
Visitors Accomodation	173	173	173	173	173	173	173	173	173	173	173	173	2,071
Postage & Delivery	35	35	35	35	35	35	35	35	35	35	35	35	414
Repair and maintenance	863	863	863	863	863	863	863	863	863	863	863	863	10,354
Overtime /Allowances Expenses	173	173	173	173	173	173	173	173	173	173	173	173	2,071
Electricity	129	129	129	129	129	129	129	129	129	129	129	129	1,553
Internet & Email	43	43	43	43	43	43	43	43	43	43	43	43	518
Water Services	52	52	52	52	52	52	52	52	52	52	52	52	621
Staff Canteen	518	518	518	518	518	518	518	518	518	518	518	518	6,212
Network Expenses	733	733	733	733	733	733	733	733	733	733	733	733	8,801
Investments	863	863	863	863	863	863	863	863	863	863	863	863	10,354
Licences and Fees	345	345	345	345	345	345	345	345	345	345	345	345	4,142
Fine and Penalties	26	26	26	26	26	26	26	26	26	26	26	26	311
Telephone	19	19	19	19	19	19	19	19	19	19	19	19	233
Fuel	431	431	431	431	431	431	431	431	431	431	431	431	5,177
Stationary & Printing	345	345	345	345	345	345	345	345	345	345	345	345	4,142
Certification	173	173	173	173	173	173	173	173	173	173	173	173	2,071
Meetings & Conferences	647	647	647	647	647	647	647	647	647	647	647	647	7,765
Payroll(Salaries)	4,530	4,530	4,530	4,530	4,530	4,530	4,530	4,530	4,530	4,530	4,530	4,530	54,357
Bank Charges	431	431	431	431	431	431	431	431	431	431	431	431	5,177
Loan repayments	15,000	15,000	15,000	25,000	25,000	25,000	25,000	30,000	30,000	35,000	35,000	35,000	310,000
													-
Total Cash outflows	264,027	270,544	269,514	271,605	902,818	291,507	273,771	277,908	564,650	413,667	307,212	306,469	4,413,691
NET INLWOWS/(OUTFLOWS)	5,458	1,041	4,204	629,816	(620,425)	(11,198)	8,801	6,961	(18,605)	26,893	(15,241)	(12,060)	5,645
OPENING BALANCE	-	5,458	6,499	10,703	640,519	20,095	8,896	17,698	24,659	6,054	32,947	17,706	
CLOSING BALANCE	5,458	6,499	10,703	640,519	20,095	8,896	17,698	24,659	6,054	32,947	17,706	5,645	

KADERES PEASANT DEVELOPMENT PLC (KPD Plc)

CASHFLOW PROJECTION FOR TWELVE MONTHS DECEMBER, 2024 ENDING NOVEMBER , 2025 US DOLLARS

ALL FIGURES ARE IN USD													
Particulars	Dec-24	Jan-25	Feb-25	Mar-25	Apr-25	May-25	Jun-25	Jul-25	Aug-25	Sep-25	Oct-25	Nov-25	Total
Cash Inflows													
Sales Clean Coffee	132,657	135,974	139,373	584,566	152,039	155,840	158,178	162,132	166,185	170,340	174,598	178,963	2,310,846
Other Income - Sales of Beans	168,286	171,652	175,085	178,587	182,158	185,801	189,518	193,308	197,174	201,118	205,140	209,243	2,257,069
CRDB - Overdraft Facility	-	-	-	-	-	-	-	-	-	-	-	-	0
Total Cash Inflows	300,944	307,626	314,458	763,153	334,197	341,641	347,695	355,440	363,359	371,457	379,738	388,206	4,567,915
Cash Outflow													
Purchase of coffee	-	-	-	-	659,442	-	-	-	-	275,835	271,345	289,456	1,496,077
Purchase of beans	191,174	200,732	210,769	209,665	-	195,685	221,307	232,373	332,034	-	-	-	1,793,739
Polybags	3,397	4,530	6,795	6,795	6,795	6,795	2,265	-	-	2,265	1,132	-	40,768
Collateral Management	951	951	951	951	951	951	951	951	951	951	951	951	11,415
Other Direct Expenses	566	566	566	566	566	566	566	566	566	566	566	566	6,795
Postage	102	102	102	102	102	102	102	102	102	102	102	102	1,223
Communication	11	11	11	11	11	11	11	11	11	11	11	11	136
Processors/Labours	4,530	4,530	4,530	4,530	4,530	4,530	4,530	4,530	4,530	4,530	4,530	4,530	54,357
Machine Repairs & Maintenance	906	906	906	906	906	906	906	906	906	906	906	906	10,871
Transportation /Hiring Vehicles	2,265	2,265	2,265	2,265	2,265	2,265	2,265	2,265	2,265	2,265	2,265	2,265	27,179
Fuel for Trucks	679	679	679	679	679	679	679	679	679	679	679	679	8,154
Sheeting and Pallets,Protective gears	181	181	181	181	181	181	181	181	181	181	181	181	2,174
Agency Commissions	18,572	18,572	18,572	18,572	18,572	18,572	18,572	18,572	18,572	18,572	18,572	18,572	222,865
Electricity	1,132	1,132	1,132	1,132	1,132	1,132	1,132	1,132	1,132	1,132	1,132	1,132	13,589
Stationary and Printing	226	226	226	226	226	226	226	226	226	226	226	226	2,718
Insurance Bulgary,fireand Bulgars and Workers	-	-	-	-	5,436	-	-	-	-	-	-	-	5,436
Sundry Expenses (Husks)	-	-	679	679	679	679	679	679	679	679	679	679	6,795
Trucks Insurance	181	181	181	181	181	181	181	181	181	181	181	181	2,174
Trucks Repair and maintainance	679	679	679	679	679	679	679	679	679	679	679	679	8,154
Sub Allowances	181	181	181	181	181	181	181	181	181	181	181	181	2,174
Security Services	2,265	2,265	2,265	2,265	2,265	2,265	2,265	2,265	2,265	2,265	2,265	2,265	27,179
Cess Paid to Local Council	5,945	5,945	5,945	5,945	5,945	5,945	5,945	5,945	5,945	5,945	5,945	5,945	71,344
Export permits	2,491	2,491	2,491	2,491	2,491	2,491	2,491	2,491	2,491	2,491	2,491	2,491	29,896
Freight and Handling	679	679	679	679	679	679	679	679	679	679	679	679	8,154
Clearing and Forwarding	4,643	4,643	4,643	4,643	4,643	4,643	4,643	4,643	4,643	4,643	4,643	4,643	55,716
Export Bags	4,813	4,813	4,813	4,813	4,813	4,813	4,813	4,813	4,813	4,813	4,813	4,813	57,755
Fair Trade and Workshops	679	679	679	679	679	679	679	679	679	679	679	679	8,154
Organic Certification Meeting and Workshop	679	679	679	679	679	679	679	679	679	679	679	679	8,154
Rent	181	181	181	181	181	181	181	181	181	181	181	181	2,174
Legal fees	385	385	385	385	385	385	385	385	385	385	385	385	4,620
Taxes	408	408	408	408	408	408	408	408	408	408	408	408	4,892
Other Gen & Admistration	566	566	566	566	566	566	566	566	566	566	566	566	6,795
Professional Fees	385	385	385	385	385	385	385	385	385	385	385	385	4,620
Audit fee	385	385	385	385	385	385	385	385	385	385	385	385	4,620
Local Transport/Visitors fee	181	181	181	181	181	181	181	181	181	181	181	181	2,174
Visitors Accomodation	181	181	181	181	181	181	181	181	181	181	181	181	2,174
Postage & Delivery	36	36	36	36	36	36	36	36	36	36	36	36	435
Repair and maintainance	906	906	906	906	906	906	906	906	906	906	906	906	10,871
Overtime /Allowances Expenses	181	181	181	181	181	181	181	181	181	181	181	181	2,174
Electricity	136	136	136	136	136	136	136	136	136	136	136	136	1,631
Internet & Email	45	45	45	45	45	45	45	45	45	45	45	45	544
Water Services	54	54	54	54	54	54	54	54	54	54	54	54	652
Staff Canteen	544	544	544	544	544	544	544	544	544	544	544	544	6,523
Network Expenses	770	770	770	770	770	770	770	770	770	770	770	770	9,241
Investments	906	906	906	906	906	906	906	906	906	906	906	906	10,871
Licences and Fees	362	362	362	362	362	362	362	362	362	362	362	362	4,349
Fine and Penalties	27	27	27	27	27	27	27	27	27	27	27	27	326
Telephone	20	20	20	20	20	20	20	20	20	20	20	20	245
Fuel	453	453	453	453	453	453	453	453	453	453	453	453	5,436
Stationary & Printing	362	362	362	362	362	362	362	362	362	362	362	362	4,349
Certification	181	181	181	181	181	181	181	181	181	181	181	181	2,174
Meetings & Conferences	679	679	679	679	679	679	679	679	679	679	679	679	8,154
Payroll(Salaries)	4,756	4,756	4,756	4,756	4,756	4,756	4,756	4,756	4,756	4,756	4,756	4,756	57,075
Bank Charges	453	453	453	453	453	453	453	453	453	453	453	453	5,436
Loan repayments	35,000	35,000	35,000	35,000	35,000	35,000	35,000	35,000	35,000	35,000	35,000	35,000	420,000
Total Cash outflows	296,478	307,169	320,150	319,046	774,258	305,066	326,159	334,959	434,620	380,686	375,064	392,042	4,565,698
NET INLWOS/(OUTFLOWS)	4,466	457	(5,692)	444,107	(440,061)	36,575	21,536	20,481	(71,261)	(9,228)	4,674	(3,836)	2,218
OPENING BALANCE	5,645	10,111	10,568	4,876	448,983	8,922	45,497	67,033	87,514	16,253	7,025	11,699	
CLOSING BALANCE	10,111	10,568	4,876	448,983	8,922	45,497	67,033	87,514	16,253	7,025	11,699	7,863	

KADERES PEASANT DEVELOPMENT PLC (KPD Plc)

CASHFLOW PROJECTION FOR TWELVE MONTHS DECEMBER, 2025 ENDING NOVEMBER, 2026 US DOLLA

ALL FIGURES ARE IN USD													
Particulars	Dec-25	Jan-26	Feb-26	Mar-26	Apr-26	May-26	Jun-26	Jul-26	Aug-26	Sep-26	Oct-26	Nov-26	Total
Cash Inflows													
Sales Clean Coffee	184,332	193,549	203,226	213,388	896,768	941,606	988,687	1,038,121	1,090,027	1,144,528	1,201,755	756,465	8,852,453
Other Income - Sales of Beans	213,428	224,099	235,304	247,069	259,422	272,394	286,013	300,314	315,330	331,096	347,651	365,033	3,397,153
CRDB - Overdraft Facility	-	-	-	-	-	-	-	-	-	-	-	-	0
Total Cash Inflows	397,760	417,648	438,530	460,457	1,156,190	1,214,000	1,274,700	1,338,435	1,405,357	1,475,625	1,549,406	1,121,498	12,249,606
Cash Outflow													
Purchase of coffee	-	-	-	-	1,045,446	1,103,845	807,686	885,445	955,655	1,356,455	1,435,244	1,011,016	8,600,792
Purchase of beans	275,678	303,246	318,408	355,576	-	-	334,328	351,045	351,045	-	-	-	2,289,326
Polybags	3,567	4,756	7,134	7,134	7,134	7,134	2,378	-	-	2,378	1,189	-	42,806
Collateral Management	999	999	999	999	999	999	999	999	999	999	999	999	11,986
Other Direct Expenses	595	595	595	595	595	595	595	595	595	595	595	595	7,134
Postage	107	107	107	107	107	107	107	107	107	107	107	107	1,284
Communication	12	12	12	12	12	12	12	12	12	12	12	12	143
Processors/Labours	4,756	4,756	4,756	4,756	4,756	4,756	4,756	4,756	4,756	4,756	4,756	4,756	57,075
Machine Repairs & Maintenance	951	951	951	951	951	951	951	951	951	951	951	951	11,415
Transportation /Hiring Vehicles	2,378	2,378	2,378	2,378	2,378	2,378	2,378	2,378	2,378	2,378	2,378	2,378	28,538
Fuel for Trucks	713	713	713	713	713	713	713	713	713	713	713	713	8,561
Sheeting and Pallets,Protective gears	190	190	190	190	190	190	190	190	190	190	190	190	2,283
Agency Commissions	19,501	19,501	19,501	19,501	19,501	19,501	19,501	19,501	19,501	19,501	19,501	19,501	234,008
Electricity	1,189	1,189	1,189	1,189	1,189	1,189	1,189	1,189	1,189	1,189	1,189	1,189	14,269
Stationary and Printing	238	238	238	238	238	238	238	238	238	238	238	238	2,854
Insurance Bulgary fireand Bulgars and Workers	-	-	-	-	5,708	-	-	-	-	-	-	-	5,708
Sundry Expenses (Husks)	-	-	713	713	713	713	713	713	713	713	713	713	7,134
Trucks Insurance	190	190	190	190	190	190	190	190	190	190	190	190	2,283
Trucks Repair and maintanance	713	713	713	713	713	713	713	713	713	713	713	713	8,561
Sub Allowances	190	190	190	190	190	190	190	190	190	190	190	190	2,283
Security Services	2,378	2,378	2,378	2,378	2,378	2,378	2,378	2,378	2,378	2,378	2,378	2,378	28,538
Cess Paid to Local Council	6,243	6,243	6,243	6,243	6,243	6,243	6,243	6,243	6,243	6,243	6,243	6,243	74,911
Export permits	2,616	2,616	2,616	2,616	2,616	2,616	2,616	2,616	2,616	2,616	2,616	2,616	31,391
Freight and Handling	713	713	713	713	713	713	713	713	713	713	713	713	8,561
Clearing and Forwarding	4,875	4,875	4,875	4,875	4,875	4,875	4,875	4,875	4,875	4,875	4,875	4,875	58,502
Export Bags	5,054	5,054	5,054	5,054	5,054	5,054	5,054	5,054	5,054	5,054	5,054	5,054	60,642
Fair Trade and Workshops	713	713	713	713	713	713	713	713	713	713	713	713	8,561
Organic Certification Meeting and Workshop	713	713	713	713	713	713	713	713	713	713	713	713	8,561
Rent	190	190	190	190	190	190	190	190	190	190	190	190	2,283
Legal fees	404	404	404	404	404	404	404	404	404	404	404	404	4,851
Taxes	428	428	428	428	428	428	428	428	428	428	428	428	5,137
Other Gen & Administration	595	595	595	595	595	595	595	595	595	595	595	595	7,134
Professional Fees	404	404	404	404	404	404	404	404	404	404	404	404	4,851
Audit fee	404	404	404	404	404	404	404	404	404	404	404	404	4,851
Local Transport/Visitors fee	190	190	190	190	190	190	190	190	190	190	190	190	2,283
Visitors Accomodation	190	190	190	190	190	190	190	190	190	190	190	190	2,283
Postage & Delivery	38	38	38	38	38	38	38	38	38	38	38	38	457
Repair and maintenance	951	951	951	951	951	951	951	951	951	951	951	951	11,415
Overtime /Allowances Expenses	190	190	190	190	190	190	190	190	190	190	190	190	2,283
Electricity	143	143	143	143	143	143	143	143	143	143	143	143	1,712
Internet & Email	48	48	48	48	48	48	48	48	48	48	48	48	571
Water Services	57	57	57	57	57	57	57	57	57	57	57	57	685
Staff Canteen	571	571	571	571	571	571	571	571	571	571	571	571	6,849
Network Expenses	809	809	809	809	809	809	809	809	809	809	809	809	9,703
Investments	951	951	951	951	951	951	951	951	951	951	951	951	11,415
Licences and Fees	381	381	381	381	381	381	381	381	381	381	381	381	4,566
Fine and Penalties	29	29	29	29	29	29	29	29	29	29	29	29	342
Telephone	21	21	21	21	21	21	21	21	21	21	21	21	257
Fuel	476	476	476	476	476	476	476	476	476	476	476	476	5,708
Stationary & Printing	381	381	381	381	381	381	381	381	381	381	381	381	4,566
Certification	190	190	190	190	190	190	190	190	190	190	190	190	2,283
Meetings & Conferences	713	713	713	713	713	713	713	713	713	713	713	713	8,561
Payroll(Salaries)	4,994	4,994	4,994	4,994	4,994	4,994	4,994	4,994	4,994	4,994	4,994	4,994	59,929
Bank Charges	476	476	476	476	476	476	476	476	476	476	476	476	5,708
Loan repayments	35,000	35,000	35,000	35,000	35,000	35,000	35,000	35,000	35,000	35,000	35,000	35,000	420,000
Total Cash outflows	384,497	413,254	431,508	468,676	1,164,254	1,216,945	1,250,358	1,342,456	1,412,666	1,464,799	1,542,399	1,116,982	12,208,794
NET INFLWS/(OUTFLOWS)	13,262	4,393	7,022	(8,219)	(8,063)	(2,945)	24,342	(2,945)	(7,309)	10,826	7,007	4,517	40,812
OPENING BALANCE	5,645	18,908	23,301	30,323	22,104	14,040	11,095	35,437	31,416	24,107	34,933	41,940	
CLOSING BALANCE	18,908	23,301	30,323	22,104	14,040	11,095	35,437	31,416	24,107	34,933	41,940	46,457	

KADERES PEASANT DEVELOPMENT PLC (KPD Plc)

CASHFLOW PROJECTION FOR TWELVE MONTHS DECEMBER, 2026 ENDING NOVEMBER, 2027

ALL FIGURES ARE IN USD														
Particulars	Dec-26	Jan-27	Feb-27	Mar-27	Apr-27	May-27	Jun-27	Jul-27	Aug-27	Sep-27	Oct-27	Nov-27	Total	
Cash Inflows														
Sales Clean Coffee	193,549	203,226	213,388	224,057	235,260	247,023	259,374	272,343	285,960	300,258	315,271	331,034	3,080,743	
Other Income - Sales of Beans	224,099	235,304	247,069	259,422	272,394	286,013	300,314	315,330	331,096	347,651	365,033	383,285	3,567,010	
CRDB - Overdraft Facility	-	-	-	-	-	-	-	-	-	-	-	-	0	
Total Cash Inflows	417,648	438,530	460,457	483,480	507,654	533,036	559,688	587,672	617,056	647,909	680,304	714,319	6,647,753	
Cash Outflow														
Purchase of coffee	-	-	-	403,455	388,677	417,462	-	-	-	558,975	525,988	656,475	2,951,032	
Purchase of beans	289,462	318,408	334,328	-	-	-	453,292	475,957	475,957	-	-	-	2,347,404	
Polybags	3,674	4,899	7,348	7,348	7,348	7,348	2,449	-	-	2,449	1,225	-	44,090	
Collateral Management	1,029	1,029	1,029	1,029	1,029	1,029	1,029	1,029	1,029	1,029	1,029	1,029	12,345	
Other Direct Expenses	612	612	612	612	612	612	612	612	612	612	612	612	7,348	
Postage	110	110	110	110	110	110	110	110	110	110	110	110	1,323	
Communication	12	12	12	12	12	12	12	12	12	12	12	12	147	
Processors/Labours	4,899	4,899	4,899	4,899	4,899	4,899	4,899	4,899	4,899	4,899	4,899	4,899	58,787	
Machine Repairs & Maintenance	980	980	980	980	980	980	980	980	980	980	980	980	11,757	
Transportation /Hiring Vehicles	2,449	2,449	2,449	2,449	2,449	2,449	2,449	2,449	2,449	2,449	2,449	2,449	29,394	
Fuel for Trucks	735	735	735	735	735	735	735	735	735	735	735	735	8,818	
Sheeting and Pallets,Protective gears	196	196	196	196	196	196	196	196	196	196	196	196	2,351	
Agency Commissions	20,086	20,086	20,086	20,086	20,086	20,086	20,086	20,086	20,086	20,086	20,086	20,086	241,028	
Electricity	1,225	1,225	1,225	1,225	1,225	1,225	1,225	1,225	1,225	1,225	1,225	1,225	14,697	
Stationary and Printing	245	245	245	245	245	245	245	245	245	245	245	245	2,939	
Insurance Bulgary,fireand Bulgars and Workers	-	-	-	-	5,879	-	-	-	-	-	-	-	5,879	
Sundry Expenses (Husks)	-	-	735	735	735	735	735	735	735	735	735	735	7,348	
Trucks Insurance	196	196	196	196	196	196	196	196	196	196	196	196	2,351	
Trucks Repair and maintenance	735	735	735	735	735	735	735	735	735	735	735	735	8,818	
Sub Allowances	196	196	196	196	196	196	196	196	196	196	196	196	2,351	
Security Services	2,449	2,449	2,449	2,449	2,449	2,449	2,449	2,449	2,449	2,449	2,449	2,449	29,394	
Cess Paid to Local Council	6,430	6,430	6,430	6,430	6,430	6,430	6,430	6,430	6,430	6,430	6,430	6,430	77,158	
Export permits	2,694	2,694	2,694	2,694	2,694	2,694	2,694	2,694	2,694	2,694	2,694	2,694	32,333	
Freight and Handling	735	735	735	735	735	735	735	735	735	735	735	735	8,818	
Clearing and Forwarding	5,021	5,021	5,021	5,021	5,021	5,021	5,021	5,021	5,021	5,021	5,021	5,021	60,257	
Export Bags	5,205	5,205	5,205	5,205	5,205	5,205	5,205	5,205	5,205	5,205	5,205	5,205	62,462	
Fair Trade and Workshops	735	735	735	735	735	735	735	735	735	735	735	735	8,818	
Organic Certification Meeting and Workshop	735	735	735	735	735	735	735	735	735	735	735	735	8,818	
Rent	196	196	196	196	196	196	196	196	196	196	196	196	2,351	
Legal fees	416	416	416	416	416	416	416	416	416	416	416	416	4,997	
Taxes	441	441	441	441	441	441	441	441	441	441	441	441	5,291	
Other Gen & Administration	612	612	612	612	612	612	612	612	612	612	612	612	7,348	
Professional Fees	416	416	416	416	416	416	416	416	416	416	416	416	4,997	
Audit fee	416	416	416	416	416	416	416	416	416	416	416	416	4,997	
Local Transport/Visitors fee	196	196	196	196	196	196	196	196	196	196	196	196	2,351	
Visitors Accomodation	196	196	196	196	196	196	196	196	196	196	196	196	2,351	
Postage & Delivery	39	39	39	39	39	39	39	39	39	39	39	39	470	
Repair and maintenance	980	980	980	980	980	980	980	980	980	980	980	980	11,757	
Overtime /Allowances Expenses	196	196	196	196	196	196	196	196	196	196	196	196	2,351	
Electricity	147	147	147	147	147	147	147	147	147	147	147	147	1,764	
Internet & Email	49	49	49	49	49	49	49	49	49	49	49	49	588	
Water Services	59	59	59	59	59	59	59	59	59	59	59	59	705	
Staff Canteen	588	588	588	588	588	588	588	588	588	588	588	588	7,054	
Network Expenses	833	833	833	833	833	833	833	833	833	833	833	833	9,994	
Investments	980	980	980	980	980	980	980	980	980	980	980	980	11,757	
Licences and Fees	392	392	392	392	392	392	392	392	392	392	392	392	4,703	
Fine and Penalties	29	29	29	29	29	29	29	29	29	29	29	29	353	
Telephone	22	22	22	22	22	22	22	22	22	22	22	22	265	
Fuel	490	490	490	490	490	490	490	490	490	490	490	490	5,879	
Stationary & Printing	392	392	392	392	392	392	392	392	392	392	392	392	4,703	
Certification	196	196	196	196	196	196	196	196	196	196	196	196	2,351	
Meetings & Conferences	735	735	735	735	735	735	735	735	735	735	735	735	8,818	
Payroll(Salaries)	5,144	5,144	5,144	5,144	5,144	5,144	5,144	5,144	5,144	5,144	5,144	5,144	61,727	
Bank Charges	490	490	490	490	490	490	490	490	490	490	490	490	5,879	
Loan repayments	35,000	35,000	35,000	35,000	35,000	35,000	35,000	35,000	35,000	35,000	35,000	6,320	391,320	
Total Cash outflows	400,496	430,667	449,772	518,898	509,999	532,905	563,836	584,051	584,051	669,519	635,307	735,890	6,615,391	
NET INFLWS/(OUTFLOWS)	17,152	7,863	10,685	(35,419)	(2,345)	131	(4,148)	3,621	33,005	(21,610)	44,997	(21,570)	32,362	
OPENING BALANCE	17,706	34,858	42,721	53,406	17,988	15,642	15,773	11,625	15,246	48,251	26,641	71,638		
CLOSING BALANCE	34,858	42,721	53,406	17,988	15,642	15,773	11,625	15,246	48,251	26,641	71,638	50,068		

ANNEX II
DEPRECIATION SCHEDULE

KADERES PEASANTS DEVELOPMENT PLC

DEPRECIATION SCHEDULE

ITEM	COST	RATE	YEAR 1	YEAR 2	YEAR 3	YEAR 4	YEAR 5
LAND AND BUILDINGS							
Opening Balance	6,272,481	4%	6,272,481	8,342,958	8,009,240	9,128,870	8,716,097
Additions/ Disposal			2,418,100	0	1,500,000	0	0
Total			8,690,581	8,342,958	9,509,240	9,128,870	8,716,097
Depreciation Allowance			347,623	333,718	380,370	365,155	348,644
CLOSING BALANCE			8,342,958	8,009,240	9,128,870	8,763,715	8,367,453
MACHINERY AND EQUIPMENT							
Opening Balance	1,648,980	12.5%	1,648,980	2,433,270	2,129,111	2,716,097	2,376,585
Additions/ Disposal			1,131,900	0	975,000	0	0
Total			2,780,880	2,433,270	3,104,111	2,716,097	2,376,585
Depreciation Allowance			347,610	304,159	388,014	339,512	297,073
Closing Balance			2,433,270	2,129,111	2,716,097	2,376,585	2,079,512
OFFICE FURNITURE/FITTINGS							
Opening Balance	51,362	12.5%	51,362	70,092	61,331	64,733	56,641
Additions/ Disposal			35,600	0	12,650	0	0
Total			86,962	70,092	73,981	64,733	56,641
Depreciation Allowance			10,870	8,761	9,248	8,092	7,080
Closing Balance			70,092	61,331	64,733	56,641	49,561
MOTOR VEHICLES							
Opening Balance	296,660	25%	296,660	312,495	234,371	232,403	174,302
Additions/ Disposal			120,000	0	75,500	0	0
Total			416,660	312,495	309,871	232,403	174,302
Depreciation Allowance			104,165	78,124	77,468	581,101	430,727
Closing Balance			312,495	234,371	232,403	174,302	130,727
TOTAL FIXED ASSETS			11,158,815	10,434,053	12,142,103	11,371,243	10,627,253
TOTAL DEPRECIATION			810,268	724,762	855,100	770,860	696,372
CUMULATIVE DEPRECIATION			810,268	1,535,030	2,390,130	3,160,990	3,857,362

ANNEX III

LOAN REPAYMENT

KADERES PEASANTS DEVELOPMENT PLC
LOAN REPAYMENT SCHEDULE

LOAN AMOUNT : USD 1,782,090

INTEREST RATE : 11% P.a

REPAYMENT PERIOD : 5 YEARS

PERIODS	PRINCIPAL	YEARLY REPAYMENT	INTEREST	TOTAL PAYMENT
2022	1,782,090	356,418	39,206	395,624
2023	1,452,672	356,418	31,959	388,377
2024	1,069,254	356,418	23,523	379,941
2025	712,836	356,418	15,682	372,100
2026	356,418	356,418	7,841	364,259
TOTALS		1,782,090	118,211	1,900,301

ANNEX IV
PROJECTED INCOME STATEMENTS US DOLLARS

KADERES PEASANT DEVELOPMENT
PROJECTED INCOME STATEMENTS – US DOLLARS

DESCRIPTION/ YEAR	Year 1	Year 2	Year 3	Year 4	Year 5
Sales Revenue	4,419,336	4,567,915	6,647,763	12,249,806	12,694,550
Cost of Sales	2,276,127	2,251,123	4,125,560	8,581,474	9,026,218
Gross profit	2,143,209	2,316,792	2,522,203	3,668,332	3,668,332
Les: Operation expenses					
Administration	57,750	59,250	62,500	82,500	82,500
Factory production overheads	719,800	725,200	735,500	1,266,300	1,266,300
Depreciation	354,603	317,182	374,223	337,357	304,758
Others	42,500	42,500	53,200	85,900	85,900
Total Expenses	1,174,659	1,144,132	1,225,423	1,772,057	1,739,458
Profit before Tax	968,550	1,172,660	1,296,780	1,896,275	1,896,275
Taxation 30%	290,565	351,798	389,034	568,882	568,882
Profit After Tax	677,985	820,862	907,746	1,327,393	1,327,393
Cumulative	667,985	1,488,847	2,396,593	3,723,986	5,051,379

ANNEX V
PROJECTED FACTORY OVERHEADS

KADERES PEASANTS DEVELOPMENT PLC
PROJECTED FACTORY OVERHEAD
2024/25 – 2025/26

No	Costs	2024/25	2025/26
1	Staff Salaries – Wages	115,765,810	257,975,000
2	Government cess	496,000,000	504,000,000
3	Transportation	386,500,000	480,000,000
4	Jute Bags	425,000,000	550,000,000
5	Pp Bags	97,500,000	118,518,000
6	Collateral management	38,950,000	43,450,000
7	Sheeting & Pallets	16,200,000	18,000,000
8	Factory Electricity	24,000,000	48,000,000
9	Generator Fuel	4,800,000	9,600,000
10	Weights & Measure	3,000,000	6,000,000
11	Plant & Machinery repair	18,000,000	22,500,000
12	Electrical repairs	2,500,000	4,800,000
13	Staff uniform safety	11,500,000	22,800,000
14	Other factory overheads	5,042,190	6,264,000
	TOTAL	1,644,758,000	2,098,900,000
	APPROX US DOLLARS	656,590	837,884

KADERES PEASANTS DEVELOPMENT PLC

PROJECTED ADMINISTRATION OVERHEAD

2024/25 – 2025/26

NO	COSTS	2024/25	2025/26
1	Staff Salaries – Wages	63,206,800	69,500,000
2	Licenses & Permit	400,000	800,000
3	Insurance	2,500,000	4,800,000
4	Rent	2,550,000	3,000,000
5	Travelling	5,000,000	11,500,000
6	Telephones Internet	1,800,000	3,500,000
7	Meter & Electricity	400,000	800,000
8	Motor Vehicle repairs	4,800,000	6,750,000
9	Conference & Meetings	6,500,000	8,000,000
10	Board meeting expenses	3,000,000	5,000,000
11	Audit fees	3,000,000	4,000,000
12	Legal fees & Consultancy	15,000,000	12,000,000
13	Office repairs & maintenance	1,200,000	2,500,000
14	Security expenses	17,400,000	20,500,000
15	Stationeries & Printing	2,800,000	4,000,000
16	General office expenses	966,000	350,000
	TOTAL	130,522,800	157,000,000
	APPROX US DOLLARS	52,105	62,675

ANNEX VI
PROJECTED BALANCE SHEET

KADERES PEASANTS DEVELOPMENT PLC

PROJECTED BALANCE SHEET: - USD'

	YEAR 1 USD	YEAR 2 USD	YEAR 3 USD	YEAR 4 USD	YEAR 5 USD
FIXED ASSETS					
Non-Current Assets	4,835,507	4,566,325	5,313,830	4,976,474	4,650,876
TOTAL NON-CURRENT ASSETS	4,835,507	4,566,325	5,313,830	4,976,474	4,650,876
CURRENT ASSETS:					
Cash and Bank	232,257	286,232	379,495	464,437	720,148
Inventory	281,729	241,490	346,361	368,273	594,020
Accounts Receivable	256,826	306,304	299,226	395,204	488,990
TOTAL CURRENT ASSETS	770,812	834,026	1,025,082	1,227,914	103,158
TOTAL ASSETS	5,606,319	5,400,351	6,338,912	6,204,388	654,034
EQUITY AND LIABILITIES:					
CURRENT LIABILITIES					
Accounts Payable	26,278	82,972	92,001	142,085	187,505
Other Current Liabilities/Taxation	290,565	351,798	389,034	568,882	568,882
SUB-TOTAL CURRENT LIABILITIES	316,843	434,770	481,035	710,967	756,387
LONG-TERM LIABILITIES:					
Long-Term Liabilities	1,553,610	1,242,888	932,166	621,444	310,722
TOTAL LIABILITIES	1,553,610	1,242,888	932,166	621,444	310,722
NET ASSESTS	1,870,453	1,678,650	1,413,201	1,332,411	1,067,109
CAPITAL AND RESERVES					
Owners Contribution	218,818	218,818	218,818	218,818	218,818
Retained Earnings	667,985	1,488,847	2,396,593	3,723,986	5,051,379
Advance toward	2,849,063	2,014,036	2,310,300	929,173	116,728
TOTAL CAPITAL	5,606,319	5,400,351	6,338,912	6,204,388	6,454,034