



SUPER PIONEER DEALERS

**SUPER PIONEER DEALERS LIMITED
MANDELA ROAD –MABIBO HOSTEL
DAR ES SALAAM, TANZANIA
TEL: +2550753107202**

**BUSINESS PLAN
FOR
LOGISTICS TRANSPORTATION
FOR
SUPER PIONEER DEALERS LIMITED**

SUPER PIONEER DEALERS LIMITED



SUPER PIONEER DEALERS

**SUPER PIONEER DEALERS LIMITED
MANDELA ROAD –MABIBO HOSTEL
DAR ES SALAAM, TANZANIA
TEL: +2550753107202**

Chapter I Basic introduction and personnel arrangement

Business Overview

Tanzania has long pursued a policy of friendship with China. Its geographical location is important, transportation is convenient, and logistics development potential is huge. There are Dar es Salaam Port, Tanzania-Zambia Railway, Central Railway and the vast number of Central, Eastern and Southern African landlocked countries.

Executive Summary

SUPER PIONEER DEALERS LIMITED. is a company incorporated in Tanzania and has obtained a certificate of compliance according to the "Company Law". The company is engaged in the logistics and transportation business, and they are interested in further expanding their business by radiating the surrounding landlocked countries with Dar es Salaam as the center.

After studying this market effectively, we believe that the strategy we have developed will enable us to compete with other logistics companies in the region and even around the world. In addition to basic cargo transportation services, we also intend to provide other services that will give us an advantage over competitors and attract our customers. Our goal is to become the top three top brands in the entire Tanzania. We will do this by providing the highest quality and speedy service.

SUPER PIONEER DEALERS LIMITED. drafted the pace of logistics enterprise management. To this end, we will continue to increase our vehicles, maintenance and other supporting facilities and provide continuous training in accordance with to ensure that our employees master the latest technology and innovation. We intend to provide excellent customer service to all customers in order to maintain repeat business with them. We will ensure that we listen carefully to their suggestions and opinions in a personal tone. We also hope to obtain guidance and skills, which will propel our business forward. We will also keep in touch with our customers and ensure that we provide them with stable and high-quality services.

Our Products and Services

SUPER PIONEER DEALERS LIMITED. not only intends to focus on container land transportation

SUPER PIONEER DEALERS LIMITED



SUPER PIONEER DEALERS

SUPER PIONEER DEALERS LIMITED
MANDELA ROAD –MABIBO HOSTEL
DAR ES SALAAM, TANZANIA
TEL: +2550753107202

services, but also intends to provide customers with closely related projects such as bulk cargo, construction machinery and equipment transportation, and vehicle maintenance.

Our vision statement

Our vision is to become one of the three major logistics brands in the country.

Our mission statement

Our mission is to ensure that we do not forget our vision. We will do this by providing the most advanced and quality services and ensuring that the needs of current and potential customers are met.

Our Business Structure

In order to have a strong structure on ground, we **SUPER PIONEER DEALERS LIMITED**. intend to ensure that we start on the right footing by getting the right employees to carry out the defined tasks that will make the company grow and make profit. We intend to invest in their welfare so that they could remain focused on growing the company.

We intend to cooperate with our broker so that both of us can benefit from this relationship. We will choose our broker carefully to expand its scope of influence and bring us other benefits. We will continue to ensure that we work hard to improve the relationship and listen to their complaints and suggestions on the way forward for the company.

We also plan to provide other products and services at **SUPER PIONEER DEALERS LIMITED**, so we know that we will need more manpower to be able to ensure business growth and smooth expansion to achieve our goals.

Roles and Responsibilities

Country Manager
Transportation Manager
Operation Manager
Human Resources and Admin Manager
Accountants
Truck Drivers
Customer Service Executives
Maintenance engineer

Country Manager

- Provides a clear strategic direction for the organization and communicate these strategies to appropriate channels
- Has an experience with the budgets as well as allocate resources appropriately
- Ensures that the right professionals are hired into the management team

SUPER PIONEER DEALERS LIMITED



SUPER PIONEER DEALERS

SUPER PIONEER DEALERS LIMITED
MANDELA ROAD –MABIBO HOSTEL
DAR ES SALAAM, TANZANIA
TEL: +2550753107202

- Builds corporate culture that would influence employees attitude and decision

Transportation Manager

- Formulate a reasonable and scientific transportation plan, vehicle operation plan, etc. according to the requirements of the relevant departments of the enterprise and organize the implementation.
- Improve the work process and standards of the transportation business in the work, ensure that the transportation work conforms to the national transportation laws and regulations, and ensure the safety of transportation.
- Timely accept emergencies in the transportation process, formulate solutions, and summarize the causes of the problems in time to avoid such problems from recurring.

Operation Manager

- Manage and coordinate the overall operation of the logistics operation department. And is responsible for rationally arranging the daily work distribution of the members of the operation department.
- Responsible for the operation and development of import customs clearance business.
- Responsible for the performance appraisal of the team, and report the work to the superiors on a regular basis. Responsible for establishing and maintaining a good cooperative relationship with the carrier's customer service and operation departments.
- Responsible for the formulation and supervision of the implementation of operating specifications in cooperation with the carrier.

Resources and Admin Manager

- Ensures the development, management as well as implementation of
- personnel policies
- Recruits, retain and terminates staff appropriately
- Ensures that office practices are adhered to and in line with employment related laws
- Ensures that the administrative systems are constantly reviewed with an aim to being proactive instead of reactive
- Ensures that staff welfare and incentive.

Accountants

- Ensures that tax returns are prepared and that tax requirements, preparation and reporting are complied with
- Works with management and report all the finances regarding **SUPER PIONEER DEALERS LIMITED**
- Ensures that budgets are developed, and maintained periodically and also compare budgeted costs to actual costs

SUPER PIONEER DEALERS LIMITED



SUPER PIONEER DEALERS

SUPER PIONEER DEALERS LIMITED
MANDELA ROAD –MABIBO HOSTEL
DAR ES SALAAM, TANZANIA
TEL: +2550753107202

-
- Prepares and analyzes of accounting records, financial statements and reports in order to determine accuracy and conformance with accounting standards
 - Carries out analysis of business operations including costs and revenues and use this to not only project future income and expenses but to proffer advice as well.

Truck Drivers

- Ensures that cargoes are loaded and unloaded at the appropriate times
- Ensures that all traffic laws are followed
- Inspects truck before and after every trip, and report any major defects found to the appropriate department
- Carries out light repairs and maintenance on trucks as at when due
- Ensures that clients get their products on time

Customer Service Executives

- Ensures that they answer calls that deal with complaints, orders, and inquiries
- professionally
- Processes orders and applications for clients
- Ensures that records of all customer interactions as well as transactions with the company are well kept
- Follows up on inquiries and complaints to ensure that appropriate actions had been taken by the company

Maintenance engineer

- Have more than 3 years of trailer maintenance work experience, and have the maintenance knowledge and maintenance skills of manual forklifts;
- Familiar with the working principles of oil extraction and electric forklifts, and be able to skillfully complete the daily maintenance of forklifts and engine overhauls;
- Can bear hardships and stand hard work, obey work arrangements, etc.

Chapter II Analysis of the external environment of the project

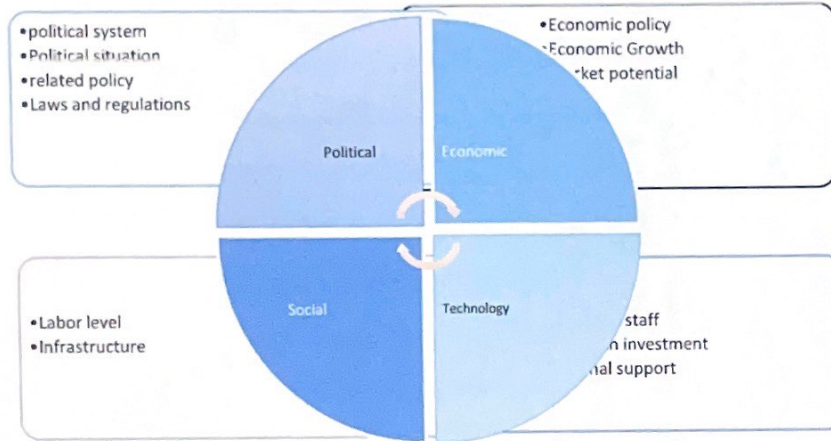
I. Tanzania's macro environment analysis

Tanzania is strategically located in the heart of Africa. As a member of the East African Community (EAC) and the Common Market for Eastern and Southern Africa (COMESA), Tanzania connects to other markets and prioritizes access to the EU, China, and the US market. At the same time, Tanzania is one of the direct beneficiaries of the Rome Convention and the African Development and Opportunity Act. From a macro-environment perspective, Tanzania's investment has good development potential:



SUPER PIONEER DEALERS

SUPER PIONEER DEALERS LIMITED
MANDELA ROAD –MABIBO HOSTEL
DAR ES SALAAM, TANZANIA
TEL: +2550753107202



From the perspective of political environment, The United Republic of Tanzania has a coalition government and a local government in Zanzibar. The coalition government implements a presidential system, and the cabinet is composed of the president, the vice president, the prime minister, the president of Zanzibar, and the ministers and deputy ministers. The current coalition government was formed on December 24, 2015 and is governed by the Revolutionary Party. In October 2017, President Magufuli reorganized the cabinet and increased the number of ministers from 35 to 42.

Strong points of investing in Tanzania include: High economic growth potential (the GDP growth over the last 10 years is around 7%, one of the fastest growing economies in Africa), Increasing economic stability (inflation down from 16% in 2012 to 4% in 2018), Rich natural resources (arable land and mineral subsoil), Strategic location (the country is a gateway to 6 landlocked countries - Uganda, DRC, Rwanda, Burundi, Zambia and Malawi), Three deep water ports that serve neighboring countries, Access to Southern African Development Community free trade market, Political stability (the country has not experienced any conflict or civil war since gaining independence).

On July 1, 2020, Tanzania was listed as a middle-income country by the World Bank, It means that Tanzania has achieved this goal 5 years ahead of schedule. Tanzania is the second country in East Africa to be included in the middle-income category (the other country is Kenya). According to World Bank standards, countries with per capital income between US\$1,000 and US\$3,955 are middle-income countries. In 2019, Tanzania's economic growth rate reached 7%, making it one of the fastest growing economies in Africa.

In the past 10 years, the average annual growth rate of Tanzania's GDP has been about 6.5%.

SUPER PIONEER DEALERS LIMITED



SUPER PIONEER DEALERS

**SUPER PIONEER DEALERS LIMITED
MANDELA ROAD –MABIBO HOSTEL
DAR ES SALAAM, TANZANIA
TEL: +2550753107202**

According to data released by the Central Bank of Tanzania, in the 2018/19 fiscal year, the total GDP of Tanzania was 129 trillion tan shillings (57.15 billion U.S. dollars), a growth rate of 7.0%, and the per capital GDP was 2.5 million tan shillings (1104 U.S. dollars).

2. Tanzania Logistics Industry environmental analysis

According to Tanzania's Investment Law, government agencies encourage foreign investment and implement tax exemptions and tax cuts. The overall investment income is considerable. The transportation infrastructure has gradually improved, and the related supply such as gas stations is relatively complete, which provides conditions for investment.

We are forecasting healthy levels of growth for Tanzania's freight and shipping sector in 2021 as the impact from the Covid-19 pandemic on global trade gradually subsides. Road freight will broadly dominate the overall freight mix in Tanzania over our forecast period. In addition, Tanzania's economic outlook has improved slightly since our last update as we now forecast real GDP growth coming in at 2.0% up from previous forecasts of 1.2%. This will improve further to 5.2% during 2021. Our long-term outlook remains positive owing to a steady stream of infrastructure projects in the pipeline.

Judging from the supply and demand situation, Tanzania's economy has grown steadily in recent years. Foreign investors and local investors have come to Tanzania to invest in factories. The construction materials, machinery and raw materials of the products need to be transported. In addition, various engineering projects have strong demand for logistics and transportation, providing a broad market for the development of the transportation industry.

2. Capacity Planning in Project

Logistics is a sunrise industry in the 21st century. With social progress and rapid economic development, the development of modern logistics science has brought huge economic benefits to the development of the national economy and enterprises, and has received more and more attention from people. Logistics science research It is still in its infancy, advanced logistics is far from widespread, and the huge benefit potential contained in enterprise logistics is far from being fully realized. The logistics of many enterprises is still in a hidden state. It is foreseeable that the logistics industry will become a new part of Tanzania's economic development. Economic growth point, the development of logistics business not only conforms to the national conditions but also has a broad market. We must seize the opportunity and present the industry with a brand-new logistics image. We have entered the 21st century. The market competition will become more intense. The level of logistics will also be an important factor in the future competition.

As an industry, logistics has played an important role in social development. Logistics not only includes physical operation facilities, but also includes the provision of logistics software, logistics systems, logistics solutions, logistics equipment, and third-party logistics, which are carried out on different levels. Competition.

We are a company at the founding stage. Our company's business purpose is to build an e-commerce platform for logistics transactions, so as to build a national logistics network, construct a platform for connecting upstream and downstream logistics transactions, and provide fourth-

SUPER PIONEER DEALERS LIMITED



SUPER PIONEER DEALERS

SUPER PIONEER DEALERS LIMITED
MANDELA ROAD –MABIBO HOSTEL
DAR ES SALAAM, TANZANIA
TEL: +2550753107202

party logistics services.

Chapter III Introduction to Project Development

1. The basic information of the company

1.1 Company Name:

SUPER PIONEER DEALERS LIMITED

1.2 Company Address: 1526 Dar es salaam
Mabibo Hostel Mandela Road

1.3 Shareholder(total shares 10,000;capital is 1,000,000 USD):

Lyu Iijun shares:5,000

Wang Qingfu shares:5,000

1.4 Legal representative:

1.5 Nature of business activity:

TRANSPORTATION

1.6 Date of establishment:

4/10/2023

1.7 Business Scope:

To carry on the business of Transportation, supply of tangible goods, buying, selling, marketing, importing, exporting, distributing and promoting of goods within and outside Tanzania; and to carry on business or trade of Transport, wholesale warehousemen, removers,storers, packers and carriers of all types of merchandise, goods, Chattels, materials and property whether personal or commercial or of any other description including facilities of cold storage or any other special storage facility.

2. Company profiles

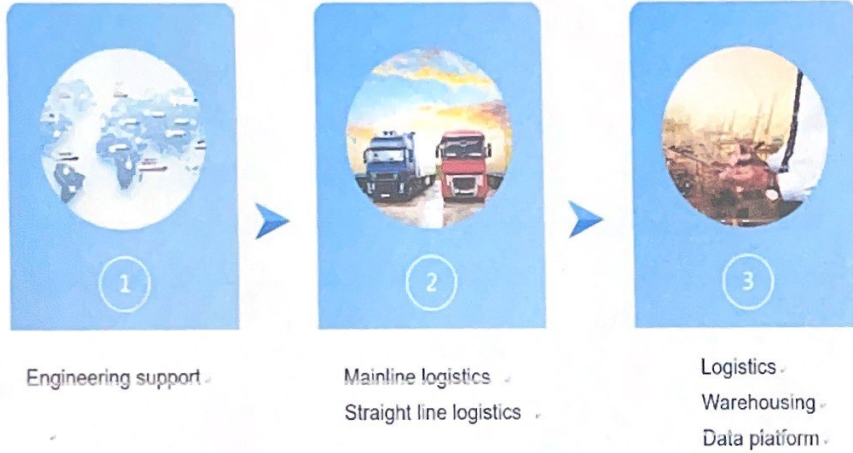
SUPER PIONEER DEALERS LIMITED is committed to becoming an influential logistics group and industrial park operator in the Pan-African region. Our service concept is entrusted by people, loyal to people, for others, to do their best. Only when there is change can there be development, if there is innovation, there will be forever Adhere to integrity, eager for innovation, scientific management, and focus on performance. The company has basically completed the construction of a large logistics and engineering supporting system in East Africa. The current business has covered the major economies of East Africa. The **SUPER PIONEER DEALERS LIMITED** is also a member of the Organizing Committee of the China-Africa Entrepreneur Association and a member of the Council of the China-Africa Civil Chamber of Commerce.

SUPER PIONEER DEALERS LIMITED



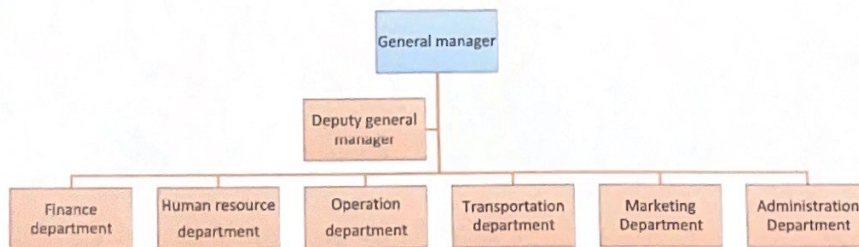
SUPER PIONEER DEALERS

SUPER PIONEER DEALERS LIMITED
MANDELA ROAD –MABIBO HOSTEL
DAR ES SALAAM, TANZANIA
TEL: +2550753107202



The company's operation and growth are accompanied by the national "Belt and Road" initiative and the implementation of the China-Africa cooperation plan, and the company is the pioneer of this strategy. Through rigorous market research, precise business positioning, scientific design operation management process, human resources system echelon reserve and localization and localization strategy, the company quickly establishes core competitiveness and comparative advantages in the regional market. The successively operated projects have gradually become the most influential and largest developers of logistics, transportation and supporting resources in each project country, shaping and solidifying the new business forms and ecology of the region.

3. Organizational structure



SUPER PIONEER DEALERS LIMITED



SUPER PIONEER DEALERS

SUPER PIONEER DEALERS LIMITED
MANDELA ROAD –MABIBO HOSTEL
DAR ES SALAAM, TANZANIA
TEL: +2550753107202

4. Company partners



5. Self-operated transport fleet



SUPER PIONEER DEALERS LIMITED



SUPER PIONEER DEALERS

SUPER PIONEER DEALERS LIMITED
MANDELA ROAD –MABIBO HOSTEL
DAR ES SALAAM, TANZANIA
TEL: +2550753107202



6. Accessory system

SUPER PIONEER DEALERS LIMITED



SUPER PIONEER DEALERS

SUPER PIONEER DEALERS LIMITED
MANDELA ROAD –MABIBO HOSTEL
DAR ES SALAAM, TANZANIA
TEL: +2550753107202



SUPER PIONEER DEALERS LIMITED



SUPER PIONEER DEALERS

**SUPER PIONEER DEALERS LIMITED
MANDELA ROAD –MABIBO HOSTEL
DAR ES SALAAM, TANZANIA
TEL: +2550753107202**

7. Management model

The company takes the market as the guide, based on the norms, strengthens the management of the enterprise, continuously improves the service quality, and forms a professional operation and management system.

Chapter IV Project Investment details

1. Corporate strategy for the next 3-5 years

To benefit from refined management is an operational strategy that our company has been advocating and following. The company's projects are in the leading position in the cost control and business process scheduling of each business unit. The company advocates the creation of a learning organization. Based on the basic management tools such as the Japanese company's 6 σ theory, the fishbone chart method, the 2/8 principle, and the QC team, the results are applied to our broader logistics industry application scenarios.

The successful implementation has provided valuable operational experience, reflected in the formulation of investment strategies, the application of investment policies, the selection of production equipment, the control of the consumption of accessories, and intensification. Purchasing forms cost advantages, site selection of yards and maintenance plants, cost control, formation of localization teams, and establishment of a series of operational processes such as salary and salary system. This has enabled our company to enter and quickly break the original market ecology. The projects that have been operated have become the most influential and profitable Chinese-funded companies in the logistics and transportation sector in the country.

With the national "Belt and Road" strategy and the gradual advancement of a large number of China-Africa capacity cooperation projects, the company has brought unprecedented opportunities for the development of the company. Based on the main ports on the west coast of the Indian Ocean, it develops in depth and completes network radiation and coverage in the inland areas. It has created favorable conditions for the company to finally realize the construction and integration of China-Africa cross-border e-commerce platform and the implementation of large logistics network.

Adopting the mature domestic logistics system and operation management concept, providing integrated, one-stop large logistics and large transportation services to the Pan-East African economy; creating value for customers through timely, fast and efficient services; providing vehicle differentiation The whole process of visualizing one-stop logistics services to meet the diversified needs of various economies, and to establish a pan-African logistics data platform to realize the big data processing and integration capabilities of industrial chain resources.

The company will adopt a mature logistics operation management system and experience, and develop the logistics business breakthroughs in a relatively short period of time to develop to economies on the east coast of Africa.

SUPER PIONEER DEALERS LIMITED



SUPER PIONEER DEALERS

SUPER PIONEER DEALERS LIMITED
MANDELA ROAD –MABIBO HOSTEL
DAR ES SALAAM, TANZANIA
TEL: +2550753107202

2. Development Plan

Development Plan					
Index	2023	2024	2025	2026	2025
Plan	1.Add trailer trucks 2.Set up , office, parking lot ,garage 3. Adopt a scientific technology system	1.Add trailer trucks 2.Set up warehouse	1.Add trailer trucks 2. Further construction 3. Build OTS system-PLOT I	1.Further expand the scale 2. Establish APP-plot I	1. Build OTS system-plot II

3. Source of investment funds

All investment funds in this project and planned future investment funds come from the profits made by shareholders in normal business activities in Tanzania and other countries and bank loans.

4. Investment cost for 3~5 years

The Total development cost is estimated at USD\$ 1,000,000.00 a summary of the breakdown is as indicated in the table below

ITEMS	USD\$
Land/Building	70,000
Plant and Machine	140,000
Vehicles	601,000
Furniture & Fittings	14,000
Pre-expenses	40,000
Others	50,000
Working Capital	85,000
GRAND TOTAL	1,000,000

From the above requirements, we would need an estimate of \$ USD\$ 143,000 (More or less than this amount depends on the company's operating conditions) to successfully start and operate our logistic company in Tanzania. This amount can successfully cover our first three years to five years of operations.

SUPER PIONEER DEALERS LIMITED



SUPER PIONEER DEALERS

SUPER PIONEER DEALERS LIMITED
 MANDELA ROAD –MABIBO HOSTEL
 DAR ES SALAAM, TANZANIA
 TEL: +2550753107202

FIXED ASSETS SCHEDULE

NAME OF ASSETS	YEAR 1	YEAR 2	YEAR 3	YEAR 4	YEAR 5
Land and Buildings	70,000	66,500	63,000	59,500	56,000
Plant & Machines	140,000	112,000	84,000	56,000	28,000
Motor Vehicle	601,000	589,800	584,800	579,800	574,800
Furniture & Fixtures	14,000	12,250	40,000	35,000	30,000
Total	825,000	780,550	771,800	730,300	688,800
Depreciation	YEAR 1	YEAR 2	YEAR 3	YEAR 4	YEAR 5
Land and Buildings	3,500	3,500	3,500	3,500	3,500
Plant & Machines	28,000	28,000	28,000	28,000	28,000
Motor Vehicles	11,200	5,000	5,000	5,000	5,000
Furniture & Fixtures	1,750	1,750	1,750	1,750	1,750
ANNUAL DEPRECIATION	44,450	38,250	38,250	38,250	38,250
CLOSING FIXED ASSETS	780,550	742,300	733,550	692,050	650,550

OTHER OPERATING COST

	YEAR 1	YEAR 2	YEAR 3	YEAR 4	YEAR 5
Motor Vehicle running expenses	34,000	37,060	40,395	44,031	47,994
Salaries and Wages	26,600	29,260	32,186	35,405	38,945
Administrative Overhead Costs	33,000	36,300	39,930	43,923	48,315
Utility Costs	14,000	15,400	16,940	18,634	20,497
Interest on Loan	10,400	9,360	8,424	7,582	6,823
Communication Expenses	17,000	18,700	20,570	22,627	24,890
Total Costs	135,000	146,080	158,445	172,201	187,465



SUPER PIONEER DEALERS

SUPER PIONEER DEALERS LIMITED
 MANDELA ROAD –MABIBO HOSTEL
 DAR ES SALAAM, TANZANIA
 TEL: +2550753107202

PROJECTED BALANCE SHEET

	YEAR 1	YEAR 2	YEAR 3	YEAR 4	YEAR 5
Fixed Assets	825,000	780,550	771,800	730,300	688,800
Long term Assets					
Depreciation	44,450	38,250	38,250	38,250	38,250
Total long term assets	780,550	742,300	733,550	692,050	650,550
Current Assets					
Cash	3,528,730	4,058,040	2,632,581	4,941,437	7,570,679
Account Receivable	135,000	155,250	178,538	205,318	236,116
Inventory	0	0	0	0	0
Total Current Assets	3,663,730	4,213,290	2,811,119	5,146,755	7,806,795
Total Assets	4,444,280	4,955,590	3,544,669	5,838,805	8,457,345
Current Liabilities					
Accounts Payable	33,750	38,813	44,634	51,330	59,029
Other Current Liabilities	3,500	4,025	4,629	5,323	6,122
Subtotal Current Liabilities	37,250	42,838	49,263	56,653	65,150
Long term Liabilities					
Long term Liabilities	0	0	0	0	0
Total Liabilities	37,250	42,838	49,263	56,653	65,150
Capital and Reserves					
Owners Contribution	1,000,000	1,736,935	3,374,299	5,447,595	8,044,008
Retained Earning	699,685	1,594,527	2,024,032	2,539,760	3,158,960
Total Capital	1,736,935	3,374,299	5,447,595	8,044,008	11,268,118



SUPER PIONEER DEALERS

SUPER PIONEER DEALERS LIMITED
MANDELA ROAD –MABIBO HOSTEL
DAR ES SALAAM, TANZANIA
TEL: +2550753107202

PROJECTED INCOME STATEMENT

	YEAR 1	YEAR 2	YEAR 3	YEAR 4	YEAR 5
Sales Revenue	1,400,000	1,680,000	2,016,000	2,419,200	2,903,040
Cost of Sales	280,000	280,000	280,000	280,000	280,000
Gross Profit	1,120,000	1,400,000	1,736,000	2,139,200	2,623,040
Operating Expenses					
Administrative Overhead					
Costs	33,000	33,330	33,663	34,000	34,340
Motor Vehicle running	34,000	34,340	34,683	35,030	35,381
Salaries and Wages	26,600	26,866	27,135	27,406	27,680
Depreciation	44,450	44,895	45,343	45,797	46,255
Utility Costs	14,000	14,140	14,281	14,424	14,568
Insurance	25,000	25,250	25,503	25,758	26,015
Interest on Loan	10,400	10,504	10,609	10,715	10,822
Total Expenses	120,450	121,655	122,871	124,100	125,341
Profit before Tax	999,550	1,278,346	1,613,129	2,015,100	2,497,699
Tax (30%)	299,865	383,504	483,939	604,530	749,310
Profit After Tax	699,685	894,842	1,129,190	1,410,570	1,748,389

SUPER PIONEER DEALERS LIMITED



SUPER PIONEER DEALERS

SUPER PIONEER DEALERS LIMITED
MANDELA ROAD –MABIBO HOSTEL
DAR ES SALAAM, TANZANIA
TEL: +2550753107202

Chapter V Project Estimated Benefits

1. Economic benefit

1.1 Promote economic growth

In the transportation process of vehicles, we will serve various projects and enterprises, and promote the construction of local factories, the production of raw materials and transportation. Throughout the chain process, it radiates local and foreign-related transportation-related industries, thereby promoting local economic development and promoting economic structure.

1.2 Increase local taxes

The implementation of the project will greatly increase the level of local economic activity and wealth, thereby increasing social taxes.

2. Social benefit

2.1 Increase employment opportunities

The implementation and operation of the entire project requires substantial financial, material and human resources. At present, the company has more than 100 local employees. In the process, the company will continue to implement the employee localization strategy unwaveringly, which will create a large number of labor and employment opportunities in Tanzania.

2.2 Realizing employee value

In the project, local employees and channel distributors are trained in strict and standardized training to improve their skill level and comprehensive professional quality, so that employees can realize their self-worth while improving their professional skills.