

**TANZANIA INVESTMENT CENTRE
DAR ES SALAAM
PROGRESS REPORT**

(Information required for the project's progress report after every six months or for amendment of Certificate of Incentives)

1. Planned activities for the period.

- a. Phase One of the project has been completed and operating since March 2023. This is achieving 7.4 million Day-Old Chick per annum feeding into the northern half of Tanzania.



Figure 1 Biosecurity Entrance to Usa River Hatchery



Figure 1 Hatchery Building



Figure 3 Office and Hatchery



Figure 3 Hatchery Office and Accommodation



Figure 2 Generator Room

Phase Two is planned for 2025 which is adding another six setter incubators and four hatcher incubators which will increase the capacity to 14.8 million Day-Old Chicks a week.

2. Achievements made on the project implementation to date.

The hatchery has been completed allowing for the insert the Phase Two incubators without changing the building. This is shown in Figure 6 Setter Bay where the space is for the new incubators.

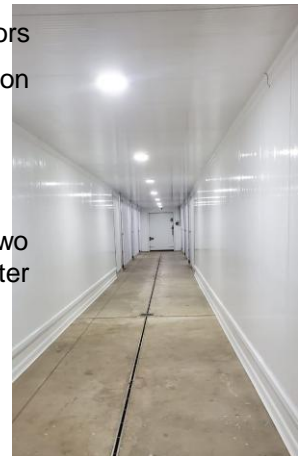


Figure 6 Setter Bay

3. Provide updated information on the following aspects:

S/No.	Information	Description	Current Project Status
1	Shareholder's Information	Current Shareholders names, nationality and percentage of ownership	<ul style="list-style-type: none"> a. Silverlands Luxembourg (T1) S.a.r.l – 37851715 shares b. SilverStreet Private Equity Strategies Soparfi with 1 share c. Sean Bernard Cowper Johnson with 14,313 shares d. Stewart Grant Bradnick – 5,591 shares e. Theo Kluyts with 5,591 shares
2	Company communication Information	Email address Mobile Number Land Line Telephone Number Physical Address (Plot No. Block No. Street, District and Region)	info@immma.dlapierafrica.co.tz +255 22 2211080-83 IMMMA House, Plot No. 357, House No. 102, United Nations Road, Upanga Street,

			Dar Es Salaam-Tanzania
3	Contact Person	Name Position Communication details (Email, Mobile and telephone)	Stewart Bradnick Director stewartb@silverlands.co.tz 0765627315
4	Incorporation	Certificate of Incorporation Number	93945
5	TIN Information	TIN Certificate No.	119- 700 -108
S/No.	Information	Description	Current Project Status
6	Project Objective	Project Core Activity	Hatching Day-Old Chicks
7	Capacity	Project capacity per year	Phase 1: 7.4 million DOC Phase 2: 14.8 million DOC
8	Direct Employment	Foreign Men Foreign Women Local Men Local Women	9 3 202 130
9	Indirect employment	Type/areas of Indirect employment	Difficult to estimate but the increase in the number of chicks in Tanzania will affect a huge number of Poultry Farmers, Agents, and AgroVets.

4. Project Financing Expenditure to date (USD)

	Foreign (USD)	Local (USD)	Total (USD)
Land and Buildings		\$ 2,661,793.00	\$ 2,661,793.00
Plant and machinery	\$ 1,094,971.44		\$ 1,094,971.44
Vehicles/Aircrafts		\$ 186,206.67	\$ 186,206.67
Furniture		\$ 1,770.23	\$ 1,770.23
Office equipment		\$ 3,546.11	\$ 3,546.11
Insurance Cover		\$ 12,630.50	\$ 12,630.50
Pre-operational expenses		\$ 28,940.36	\$ 28,940.36
Working sub-total capital		\$ -	\$ -
Grand Total	\$ 1,094,971.44	\$ 2,661,793.00	\$ 3,756,764.44

5. Project Financing

Explain how the project is being financed e.g equity, loans, sources of loans, conditions etc. see table below:-

	Amount (USD)	Source Country
Local equity	\$124,224.89	Tanzania
Local loans	3,865,633.42	Tanzania

Foreign equity		
Foreign Loans		
Total Investment	\$ 3,989,858.31	Tanzania

6. Problems and Solutions

As with any project there have been a few minor challenges, these were easily solved. The project was very successful with a major amount of support from the Local

Government Authorities and the Ministry of Livestock and Fisheries. With cooperation like this from the Government, the project implementation is very simple.

Figure 7 Dignitaries at Usa River Opening



Figure 8 Honorable Minister Abdullah Ulega and Regional Commissioner John Mongela.



Figure 9 Honorable Minister Abdullah Ulega opening the hatchery.

7. Future Plans

There are no immediate plans to expand the hatchery in the next six months.

Phase Two expansion is forecast to be done in 2025. This will be importing incubators and installing them in the hatchery, costs estimated at \$1,200,000. This will increase the hatching capacity at Usa River Hatchery to 14.8 million Chicks per annum.



Figure 4 Setter Type Incubator

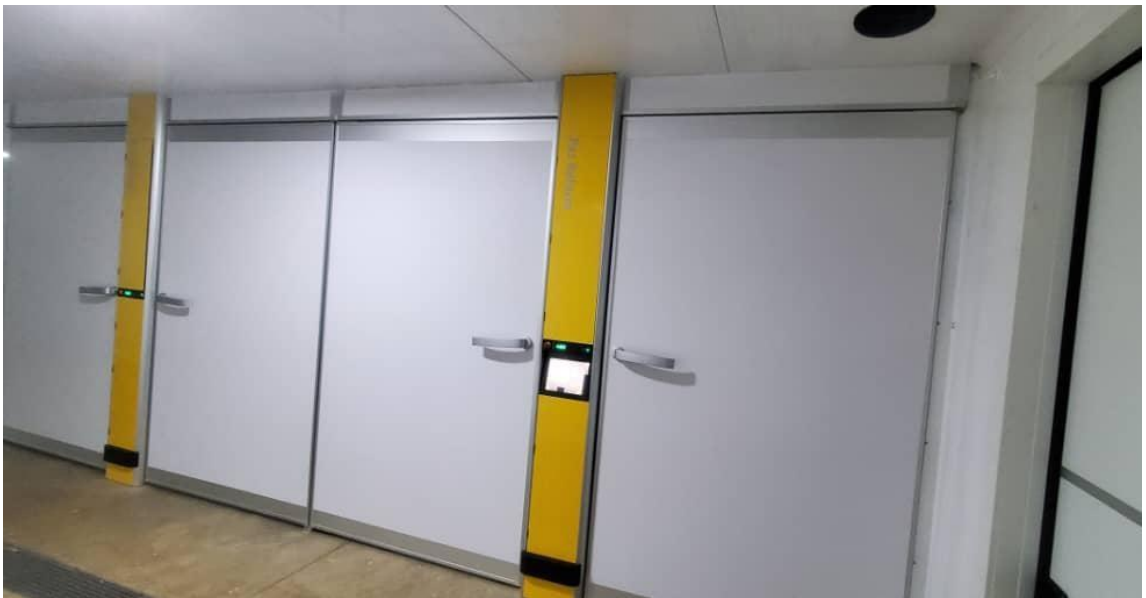


Figure 5 Hatchery Type Incubator

8. Recommendations and any other comments

Nil

TANZANIA



Certificate of Incorporation

Section 15

No 93945

I HEREBY CERTIFY THAT

SILVERLANDS TANZANIA LIMITED

is this day incorporated under the Companies Act, 2002 and that the Company is Limited.

Given under my hand at Dar es salaam

this 19TH day of SEPTEMBER**TWO THOUSAND AND TWELVE.**
Asst. Registrar of Companies



TANZANIA REVENUE AUTHORITY

CERTIFICATE OF REGISTRATION

FOR

TAXPAYER IDENTIFICATION NUMBER (TIN)

(ISSUED UNDER SECTION 133 OF THE INCOME TAX ACT NO. 11 OF 2004)

THIS IS TO CERTIFY THAT

SILVERLANDS TANZANIA LIMITED

.....

has been registered with the Tanzania Revenue Authority and assigned the Taxpayer Identification Number

119-700-108

.....
07-02-2013

with effect from

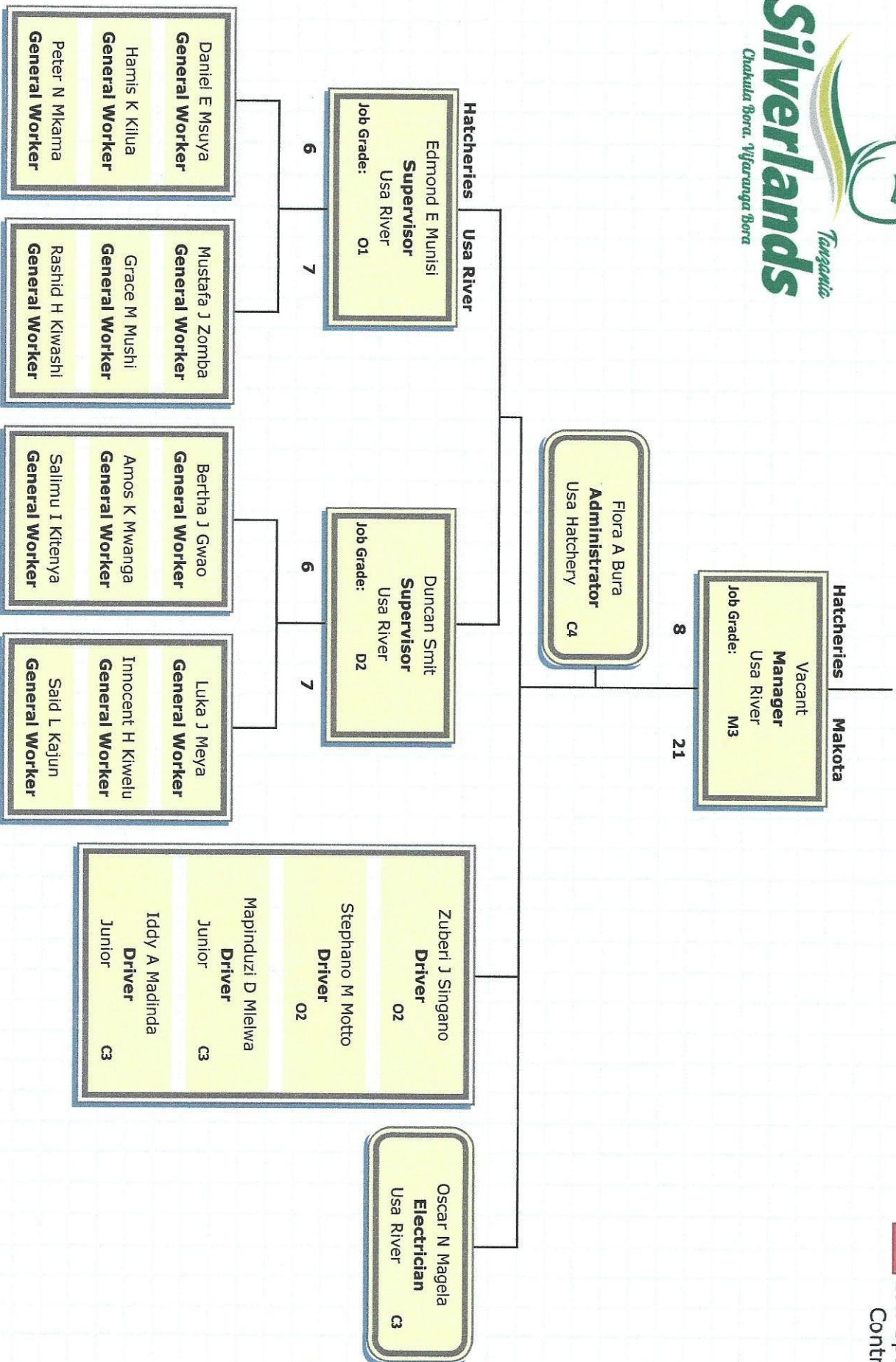


P. N. Kassera

OFFICIAL SEAL

COMMISSIONER FOR DOMESTIC REVENUE

Low Span of Control



Low Span of Control

