



**A LEGENDARY LEGACY  
CONTINUES...**

## ABOUT US



### INFINITE LUXURY THROUGH NATURAL MARBLE AND STONE

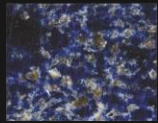
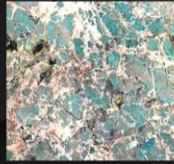
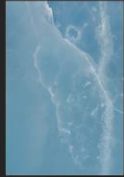
A-Class Marble is one of the leading marble company in India whose name is synonymous with ultimate craftsmanship, world-class quality and utmost attention to detail. It not only offers versatility and premium choices of marble and stone for bespoke interiors and exteriors, but also innovates to cater with varying tastes and trends.



## **550+ VARIETIES FROM MORE THAN 40 COUNTRIES**

Being the architectural maestro in identifying the best marble and stones from far corners of the world, A-Class Marble brings a magnificent collection of 550+ varieties handpicked from more than 40 countries from all across the globe.

The company offers a wide variety of Italian marble, stone, granite, limestone, quartzite, semi-precious stone and other architectural surfaces.



## CRAFTING BESPOKE MASTERPIECES

A-Class Marble is acclaimed today for its diversified and premium quality products offering a wide range of 12 bespoke collections that includes Signature, Pristine, Exotica, Opera, and Avant-Garde, to name a few.

These masterpieces are used in different spaces like flooring, wall cladding, countertops, highlighter walls, dining tables, bar counters and facades to give a style statement to your interiors and exteriors.

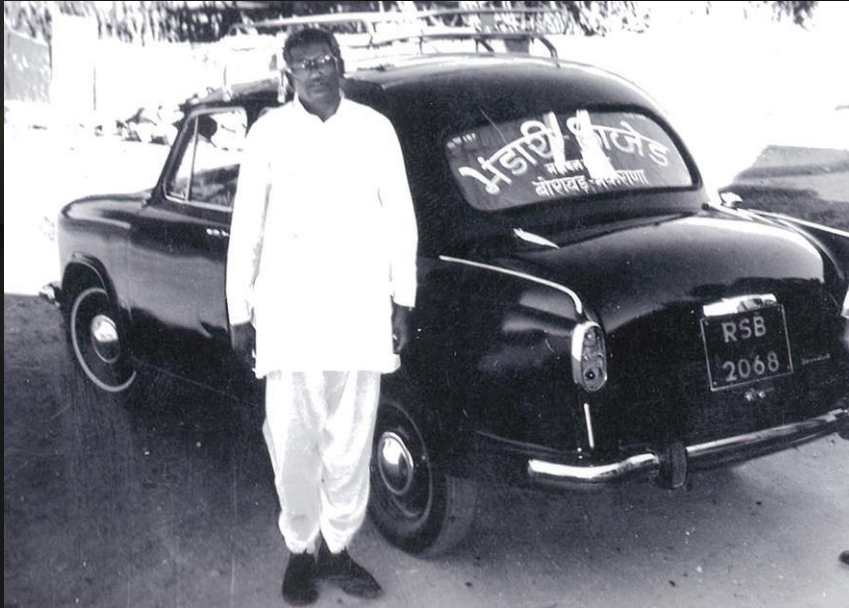
**50**  
YEARS

**A LEGENDARY LEGACY  
CONTINUES...**

**FOR OVER 50 YEARS, A-CLASS MARBLE  
HAS BEEN THE INSPIRING LEADER**

Honouring the 50 years of legendary legacy, A-Class Marble has become a testament to reinstate India's glory through excellence in stone.

## JOURNEY OF A-CLASS MARBLE



### LT. SH. ROOP CHAND BHANDARI FOUNDER

The story began in 1971, when Roopchand Bhandari purchased the first marble factory in Makrana, Rajasthan. INDIA. With his vision and unrelenting determination, he established a new marble empire and set a benchmark for premium Indian marble.

His son Raichand Bhandari with his passion and perseverance took on the challenge soon after and helped in expansion that led to exponential growth.



## THE BRANDS STRONG HERITAGE

If there's one leading marble company in India whose name is synonymous with ultimate craftsmanship, world-class quality and utmost attention to detail, it is A-Class Marble. It not only offers versatility and premium choices of marble and stone for bespoke interiors and exteriors, but also innovates to cater to varying tastes and trends.

## INFRASTRUCTURE & PRESENCE

NEW DELHI | KISHANGARH, RAJ. | AHMEDABAD (INDIA)



### A STATE-OF-THE-ART PROCESSING UNIT KISHANGARH, RAJASTHAN, INDIA

The backbone, that invincibly works round the clock, is the state-of-the-art processing unit spread over 10,00,000 sq. mtr. in Kishangarh, Rajasthan, INDIA.

Backed by the decades of innovation, the company adheres its unique StenInn process in its processing unit and believes in amalgamating latest technologies, innovation and sustainable techniques from over the years.

## CREATE A PERFECT AMALGAMATION OF BEAUTY AND DURABILITY

A celebrated secret of A-Class Marble is the revolutionary StrenInn Technology, which is a fusion of expertise and cutting-edge technology backed by decades of innovation. The process towards perfection of creating marble for eternity that transforms the landscape of luxury interiors and architecture.

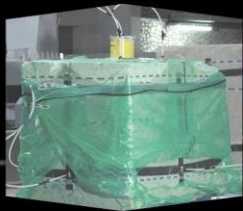


**STRENN**

**MARBLE FOR ETERNITY**



**CLEANING & DRESSING  
OF BLOCKS**



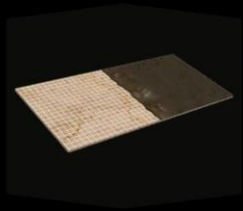
**BLOCK REINFORCEMENT**



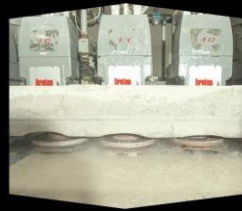
**SLAB CUTTING PROCESS**



**SLAB REINFORCEMENT**



**BOTH SIDE EPOXY  
APPLICATION**



**POLISHINGS OF SLAB**



Scratch  
Resistance



Stain  
Resistance



Improved  
Strength & Density

## REVOLUTIONARY STRENINN TECHNOLOGY

A-Class Marble's revolutionary StrenInn Technology continues the legacy of marble by constantly adding innovations for creating marble for eternity.

With the blend of „Strength“ and „Innovation“, the StrenInn process undergoes the block reinforcement process to increase the strength and durability of the block. The gangsaw machinery cuts the slabs inch perfect as per the international dimensions of 18mm & 20mm thickness. Italian epoxy is applied on both sides of the slab for higher density.

The StrenInn process builds on the natural features of marble by making it durable and preserving its shine for years.



## BREATH-TAKING SHOWROOM KISHANGARH, RAJ. INDIA

This breath-taking showroom is a true tribute to your rich taste with a unique blend of Classical Greek and Roman Architecture, spread over 15,000 sq. mtr., located in Kishangarh, Rajasthan, INDIA.



## BREATH-TAKING SHOWROOM KISHANGARH, RAJ. INDIA

This breath-taking showroom is a true tribute to your rich taste with a unique blend of Classical Greek and Roman Architecture, spread over 15,000 sq. mtr., located in Kishangarh, Rajasthan, INDIA.



## BREATH-TAKING SHOWROOM KISHANGARH, RAJ. INDIA

This breath-taking showroom is a true tribute to your rich taste with a unique blend of Classical Greek and Roman Architecture, spread over 15,000 sq. mtr., located in Kishangarh, Rajasthan, INDIA.



## STOCKYARD KISHANGARH, RAJ. INDIA

The Kishangarh stockyard has been carefully designed to showcase more than 550 different varieties of imported marble and stones are like Statuario from Italy, Michel Angelo from Portugal and quarried from other various countries including, Spain, Greece, France, Turkey, Vietnam, and many more.





## SHOWROOM NEW DELHI INDIA

A-Class Marble has reached another marvellous milestone by launching a spectacular showroom and stockyard sprawling 1,20,000 sq. ft. in New Delhi, INDIA.



## SHOWROOM NEW DELHI INDIA

A-Class Marble has reached another marvellous milestone by launching a spectacular showroom and stockyard sprawling 1,20,000 sq. ft. in New Delhi, INDIA.



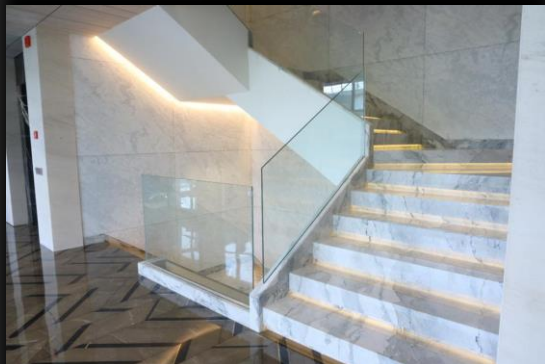
## SHOWROOM NEW DELHI INDIA

A-Class Marble has reached another marvellous milestone by launching a spectacular showroom and stockyard sprawling 1,20,000 sq. ft. in New Delhi, INDIA.



## SHOWROOM NEW DELHI INDIA

A-Class Marble has reached another marvellous milestone by launching a spectacular showroom and stockyard sprawling 1,20,000 sq. ft. in New Delhi, INDIA.



## SHOWROOM NEW DELHI INDIA

A-Class Marble has reached another marvellous milestone by launching a spectacular showroom and stockyard sprawling 1,20,000 sq. ft. in New Delhi, INDIA.





## STOCK YARD NEW DELHI INDIA

The showroom displays an impressive collection of imported marble and stones from various countries, including Italy, Spain, Greece, France, Turkey, Vietnam, and more. Additionally, it offers modern materials like ceramic and porcelain slabs from Fiandre, based in Italy. It houses the beige, grey, and white and exotic collections. Notably, the showroom showcases “Magro” porcelain slabs, a Make-in-India product range by A-Class Marble.



## SHOWROOM NEW DELHI INDIA

Step into a world of timeless elegance at A-Class Marble's another marvelous showroom in New Delhi.



## STOCK YARD NEW DELHI INDIA

Explore our exquisite beige and grey collections in one dedicated space, while our white and exotics collection awaits in another. We've meticulously crafted an experience centre where one can effortlessly find the perfect color palette and design inspiration for their project.



## SHOWROOM AHMEDABAD INDIA

An address of style, substance, and space - "A-Class Atelier" is first-of-its-kind smart showroom, uniquely designed on the lines of the lounge concept, dwelling in the heart of Ahmedabad, Gujarat.INDIA



## GLOBAL EXPANSION

At A-Class Marble, we're taking luxury to new depths as we expand globally by acquiring cutting-edge marble mines. Our commitment to excellence is now set to reach even greater heights, offering clients a broader spectrum of premium marbles for their architectural masterpieces.



## PAN-INDIA MARKETING PRESENCE

A-Class Marble accentuates its Pan-India marketing presence with a strong marketing team.

## MANAGING COMMITTEE



### **Raichand Bhandari** Managing Director

Raichand Bhandari has been the founding pillars of A-Class Marble. His eye for identifying fine details for sourcing the best quality marble from all across the globe to India, has set a benchmark in the entire marble industry. His meticulous approach has spelled a new zeal into the business by turning challenges into opportunities. Owing to his dedication, hard work and far-sighted futuristic vision to carve a niche for the group, he ensures constant growth and expansion of the company and successfully led the brand to become a well-known name in the architectural industry.



## Rajesh Bhandari CEO & Director

Rajesh Bhandari's journey of 2 decades in the marble industry has developed the brand as a renowned and luxurious name in the architectural world. His experience in research, experimentation and innovation has achieved a benchmark by lifting the company's identity to the top level. He has acquired several strategies to position the company as a leader of imported marble in the national and international sectors. With an empowering and determined focus on revolutionizing the stone industry, his expertise in quality stone identification, purchasing activities, sales growth and client relationships has enthusiastically driven the company towards larger horizons of business expansion.



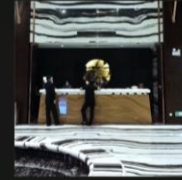
## **Ramesh Bhandari**

### **Director**

Ramesh Bhandari, with his 18 years of expertise has translated the vision of the brand into reality with an eye for detail and his determined focus. With a knack for devising excellent business strategies, he is known for his unique approach towards sales, marketing, and customer relations. His immense experience in analyzing the needs of the market trends, he constantly expands the existing assemblage of A-Class Marble. With his far-sighted and futuristic methodologies to deal with challenges, he brings plausible solutions for the company. His tenacity and determination towards the business has taken the A-Class brand to its unique status of repute in the design industry.



MARBLE | STONE | GRANITE | PORCELAIN  
SLABS



## PROJECTS

Creating perfection to design typologies that endures through the ages

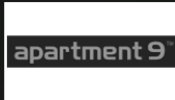
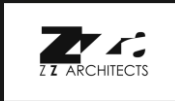
# CLIENTELE

Successfully delivering luxury to a distinguished and acclaimed clientage

## RESIDENTIAL



## ARCHITECT, DESIGNERS



## COMMERCIAL

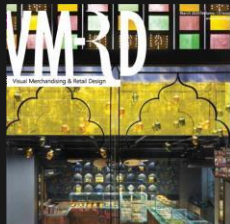
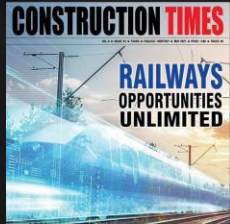
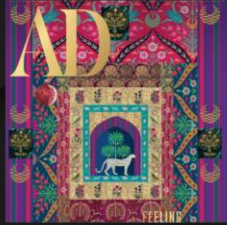


## CORPORATE OFFICES



## HOSPITALIT Y





## RECOGNITIONS IN OVER 200+ NATIONAL AND INTERNATIONAL MEDIA HOUSES

A-Class Marble has been honoured by more than 200+ national and international publications like Architectural Digest, Elle Decor, Architects and Interiors India, Architecture + Design, India Today, Ace Updates and many more media houses for delivering extraordinary services and quality.

We Are  
**Expanding**



**REPUBLIC OF TANZANIA**

# Promoting Local Economic Development (LED) Tanzania

By

**A-CLASS MARBLE TANZANIA PVT LTD**

# A-CLASS MARBLE TANZANIA PVT. LTD.

We are prominent company of Imported Marble manufacturing since 50 years and we had achieved a milestone turnover of USD 2.84 Cr. in the Financial year of 2022-23 and recently we are coming into mines business and we will develop the mines with Tanzania and produces Marble Blocks and sell into whole world and generate the revenues and pay the taxes to the Govt. of Tanzania. By this taxes Govt. of Tanzania will definitely make the plan to develop the infrastructure, hospitals, networks and energy reforms and reduces poverty.

# Employment Opportunities

We will generate employment opportunities into Tanzania. We will employ around 60 employees right now and then after it will be increased. For Tanzanians we will generate many opportunities from junior level to senior level and it will definitely boost the economy of Tanzania. We will conduct the training programme for the Tanzanians to work similarly.

# Infrastructure Development

Poorly maintained infrastructure, particularly roads, is a key constraint to realizing the potential of Tanzania's rural areas. To achieve the national growth and modernization targets, we will close attention to be paid to developing the country's infrastructure to enable improved accessibility to productive locations.

# Total Project Fund

**We will invest approximately \$ 20,00,000.00 for Machineries & other development and operating cost.**

# Production Plan

**Our plan is to produce 6000 MT to 12000 MT marble blocks every year with increasing capacity**

# Revenue Plan

**We will export all the blocks from Tanzania to whole of the world and it will generate Foreign exchange reserve to the Govt. of Tanzania and it will boost the economy of Tanzania.**

# Wastage Disposal Plan

**We will make the powder from wastage generated from the blocks through Crusher's plant and it will be also exported and revenue will be increased.**

# Future Plan

**We hope material will not be finished in coming 20 years for our mining area of 2.70 KM.**

# Conclusion

**All these above mentioned factors our company will help to boost the economy of the Govt. of Republic of Tanzania.**

# THANK YOU

