



SIMBA
LOGISTIC EQUIPMENTS SUPPLY

BUSINESS PLAN

**FOR EXPANSION OF
LOGISTICS OPERATIONS**





SIMBA
LOGISTIC EQUIPMENTS SUPPLY

COVER LETTER





Tanzania Investment Centre
Head Officer
Po. Box 938,
Golden Jubilee Tower,
1st Floor, Ohio Street,
Dar es Salaam.

Simba Logistic Equipment Supply
P.o Boc 40451,
Mikocheni, Industrial Area, Plot 71 Siwa Road,
Dar es Salaam, Tanzania.

REF: SUBMISSION OF BUSINESS PLAN FOR EXPANSON OF LOGISTICS OPERATIONS

We are hereby to submit business Plan for Simba Logistic Equipment Supply and to express our keen interest in expanding our business operations into Tanzania. As a reputable provider of logistics services, we are excited about the prospect of contributing to Tanzania's economic growth and development while benefiting the local community.

At Simba Logistic Equipment Supply, we pride ourselves on our ability to deliver comprehensive logistics solutions tailored to the unique needs of our clients. With extensive experience in the industry and a proven track record of excellence, we are confident in our capacity to meet and exceed the expectations of businesses operating in Tanzania.

We are fully prepared to invest in expanding our fleet capacity to support our operations in Tanzania. By increasing our presence in the region, we aim to create job opportunities, foster local partnerships, and contribute to the socio-economic development of Tanzania. In addition to our logistical expertise, we are deeply committed to corporate social responsibility and sustainability. We believe in conducting our business ethically and responsibly, and we are committed to minimizing our environmental impact while maximizing the positive social outcomes of our operations.

We are eager to explore potential partnership opportunities with Tanzania Investment Centre (TIC) and other stakeholders in the region. Together, we can control our combined expertise and resources to drive mutual success and prosperity.

Thank you for considering Simba Logistic Equipment Supply as a potential partner in Tanzania's growth journey. We look forward to the opportunity to collaborate and contribute to the thriving business landscape of Tanzania.

Please do not hesitate to contact us if you require any further information or if you would like to discuss potential collaboration opportunities in more detail.

Anil Babu Vasu Kodavana
Logistics Director
Simba Logistic Equipment Supply

David Ndelwa
Group CEO
Simba Group of Companies

SIMBA LOGISTIC EQUIPMENT SUPPLY LIMITED
P.O.Box 40451, Dar es salaam Tanzania
Plot No. 71 - Siwa Road, Mikocheni Industrial Area
Tel: +255 677 222 605

E: info@simbalogistic.co.tz | W: www.simbalogistic.co.tz



SIMBA
LOGISTIC EQUIPMENTS SUPPLY

ETHICAL AND BUSINESS CONDUCT DISCLOSURE STATEMENT





ETHICAL AND BUSINESS CONDUCT DISCLOSURE STATEMENT

Simba Logistic Equipment Supply Limited affirms its unwavering adherence to the Ethical and Business Conduct Guidelines as prescribed by The United Republic of Tanzania. As a logistics equipment supplier, we recognize the critical role of ethical practices and compliance with all relevant laws and regulations in shaping our business ethos and stakeholder interactions.

Simba Logistic Equipment Supply Limited asserts the following:

1. Our commitment to abide by all pertinent local, national, and international laws and regulations is steadfast. We conduct our business in strict conformity with the legal frameworks established by the Tanzanian authorities and regulatory agencies.
2. We maintain the highest ethical standards throughout our business dealings, fostering a culture of integrity, transparency, and equity. We categorically reject any acts of bribery, corruption, or unethical conduct in our dealings with clients, suppliers, government representatives, and other partners.
3. Our dedication to fair market competition is unwavering. We vie for business based on the caliber of our offerings and customer contentment, steering clear of any anti-competitive behaviors like price manipulation, collusion, or market monopolization.
4. We proactively manage and disclose any potential conflicts of interest to guarantee unbiased and beneficial decision-making for our clients and stakeholders. Our employees are mandated to reveal any conflicts and avoid actions that might impair their professional judgment or integrity.
5. The confidentiality and privacy of the sensitive data entrusted to us by our clients, suppliers, and associates are of utmost importance. We enforce robust data protection measures to prevent unauthorized exposure or misuse of confidential information.
6. Acknowledging the significance of environmental stewardship, we are devoted to reducing our ecological footprint. We endeavor to procure and provide logistic equipment and services that align with or surpass environmental norms, advocating sustainable practices across our supply chain.
7. Our commitment extends to uplifting the communities where we operate, aiming to enhance their social and economic fabric. Through our corporate social responsibility endeavors, we seek to positively influence society by investing in educational, healthcare, and other communal development initiatives.
8. We consistently reassess and refine our policies, procedures, and practices to ensure they meet ethical standards and business regulations. We welcome stakeholder input and are dedicated to the perpetual enhancement of our business processes.

Simba Logistic Equipment Supply Limited acknowledges the supreme importance of integrity and ethical conduct in all business facets. True to this pledge, we accept the responsibility to promptly report any suspected breaches of laws, regulations, or ethical norms to the relevant authorities, in accordance with Tanzanian legislation.

Declared, Signed and Sealed at Dar es Salaam, Tanzania on this **26th** day of **March, 2024**



David Lusan Ndelwa
Group CEO



BEFORE ME:

HARRY GODFREY MBISE



P.O. BOX 11609, DAR ES SALAAM

COMMISSIONER FOR OATHS



SIMBA LOGISTIC EQUIPMENT SUPPLY LIMITED P.O.Box 40451, Dar es salaam
Tanzania
Plot No. 71 - Siwa Road, Mikocheni
Industrial Area
Tel: +255 677 222 605



E: info@simbalogistic.co.tz | W: www.simbalogistic.co.tz



SIMBA
LOGISTIC EQUIPMENTS SUPPLY

EXECUTIVE SUMMARY





EXECUTIVE SUMMARY

Simba Logistic Equipment Supply (SLES), a flagship division of the esteemed Simba Group of Companies, has established itself as a leading player in the logistics sector across Sub-Saharan Africa over 16 years. Our primary mission is to deliver top-tier transportation solutions that drive socio-economic advancement in Tanzania. In line with this vision, SLES is poised to elevate its operational capacity by acquiring new trucks and other facilities, thereby boosting employment opportunities and fostering growth in key sectors like agriculture, infrastructure, and commerce within Tanzania.

Our extensive fleet and proven track record pave the way for expanding our service offerings to encompass supply chain management of critical commodities such as treated mosquito nets, medical supplies, and other essential goods. This expansion aligns effortlessly with our vision to evolve into a comprehensive supplier of essential products and services in Tanzania.

With a formidable fleet of over 300 trucks and a team of skilled professionals spanning diverse specialties, SLES is strategically positioned to realize its ambitious growth agenda. Committed to supporting Tanzania's national development objectives, SLES leverages its industry expertise and resources to uplift local communities and enhance the commercial landscape.

At the core of SLES's philosophy lies a relentless pursuit of excellence, supported by a culture of continual improvement and innovation. Leveraging our diverse fleet and advanced logistics methodologies, we uphold superior service standards while meeting strict deadlines and operational benchmarks. By diversifying our services to include warehousing and distribution of key commodities, we aim to address urgent community needs and drive meaningful impact in Tanzanian communities.

Boarding on this exciting journey of growth and diversification, SLES recognizes the essential role of strategic investments in enhancing our capabilities and securing a competitive edge. Central to our growth strategy is the acquisition of additional trucks to accommodate the rising demands associated with our expanded service portfolio.

In summary, SLES stands poised to forge ahead as a catalyst for progress and prosperity in Tanzania, driven by a steadfast commitment to excellence, innovation, and community empowerment.



SIMBA
LOGISTIC EQUIPMENTS SUPPLY

OUR MISSION, VISION & VALUES





MISSION

Our mission is to distribute goods and render services to our customers to their ultimate satisfaction and exceptionally meet the needs of all our stakeholders. We aim to increase Value to our customers by delivering innovative and excellent logistics and supply chain services, a great place to work for our employees and create a Mutual beneficial relationship with our strategic partners



VISION

Vision is to be the most reliable supply chain Service Company in the region. We envisage to be preferred one stop supply chain service provider



VALUES

INTEGRITY:

We conduct business with highest standards of ethics, mutual trust with our customers, shareholders, suppliers and the community. Integrity is the foundation of everything we do"

01

TEAMWORK:

'We achieve success through collaborative efforts committed to achieving defined common objective, We share information, cooperate across organization boundaries, focus on adding values and earning the trust of our teammates.

02

DEDICATION:

This core value arms the meaning of the work we do and the fact that our work place is community of peoples who share and are committed to common and depend on one another to further our mission

03

QUALITY:

'Our goal is to be the recognized leader in our marketplace; recognized for innovation, quality, responsiveness and value. We continuously strive to be the standard by which performance is measured

04

CONTINUOUS IMPROVEMENT:

'We are committed to improving everything we do. The relentless pursuit of excellence drives our daily activities. We operate in environment that encourage innovation and creativity and is naturally sceptical of maintain the status quo

05

KEY OBJECTIVES & STRATEGIES

Simba Logistic Equipment Supply (SLES) is on a trajectory to scale up its presence in Tanzania by acquiring a fleet of new trucks, enhancing its service capacity to address the escalating market needs. SLES is poised to catalyse job creation and nurture the agricultural sector, fortify infrastructure, and invigorate the Tanzanian economy through judicious investments.



Government Collaboration: SLES is championing tax relief measures to forge a pivotal alliance with the government, aiming to achieve shared economic growth and affluence.



Harmony with National Goals: SLES pledges to align its operations with the national development objectives of Tanzania, channelling its know-how and assets to enrich the lives of the community and fortify local enterprises.



Engine of Economic Progress: The expansion endeavours of SLES are set to be a driving force for widespread economic progress, bolstering Tanzania's stature as a central node for regional commerce and trade.





SIMBA
LOGISTIC EQUIPMENTS SUPPLY

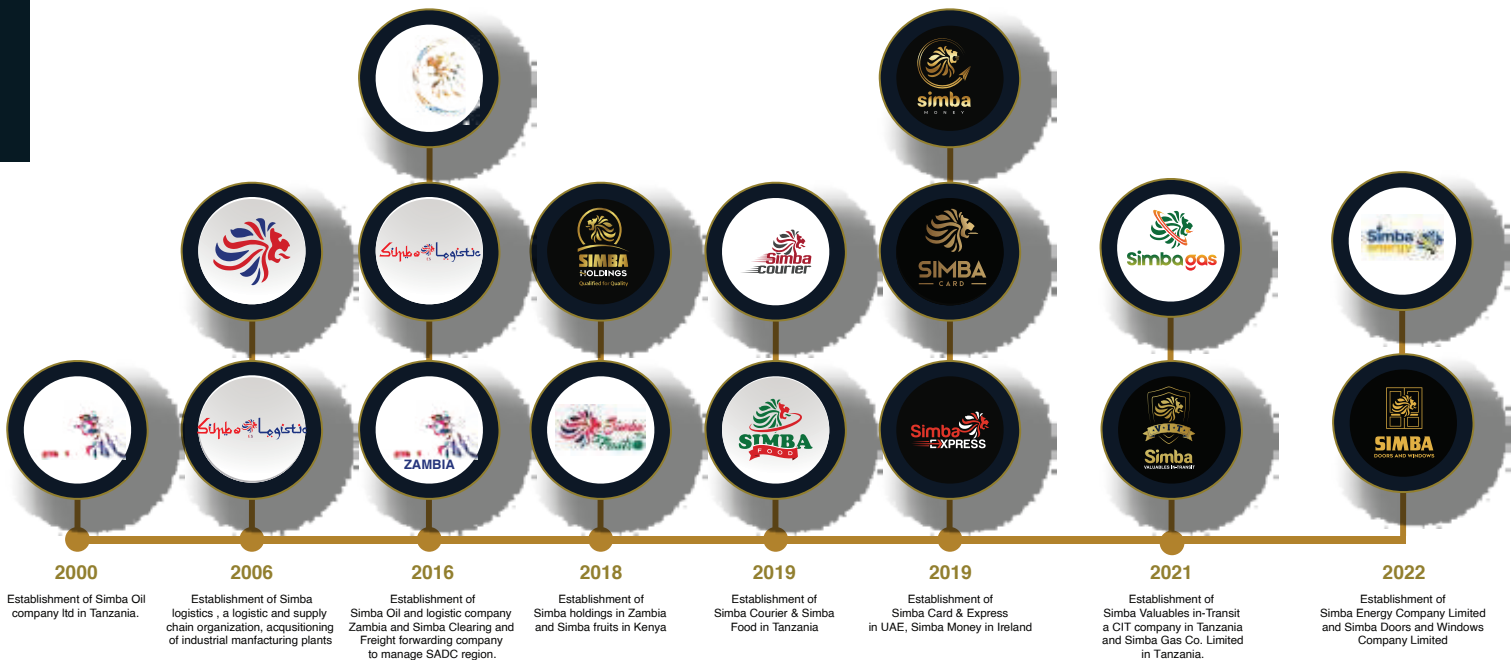
EVOLUTION & PORTFOLIO



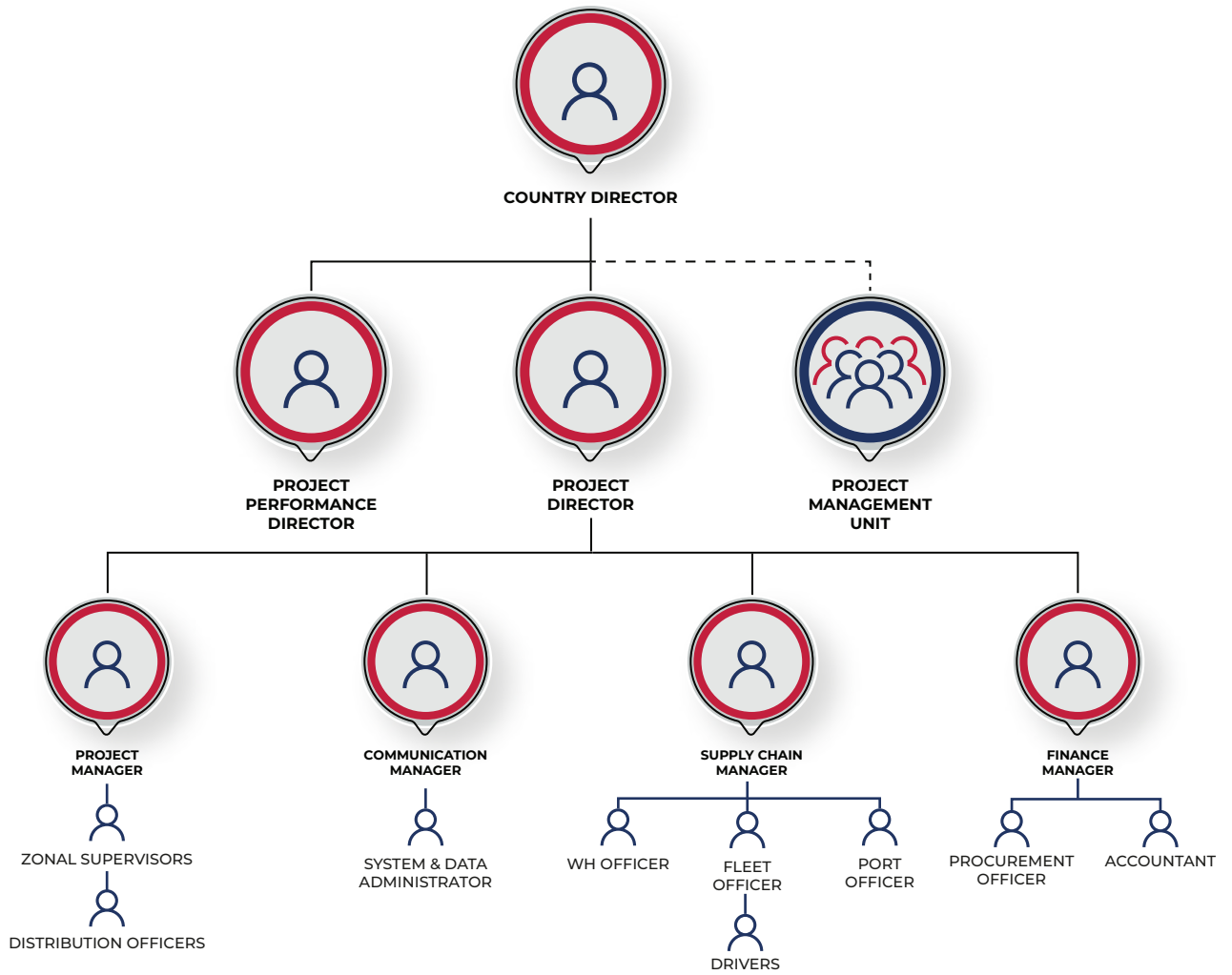
SIMBA GROUP PORTIFOLIO



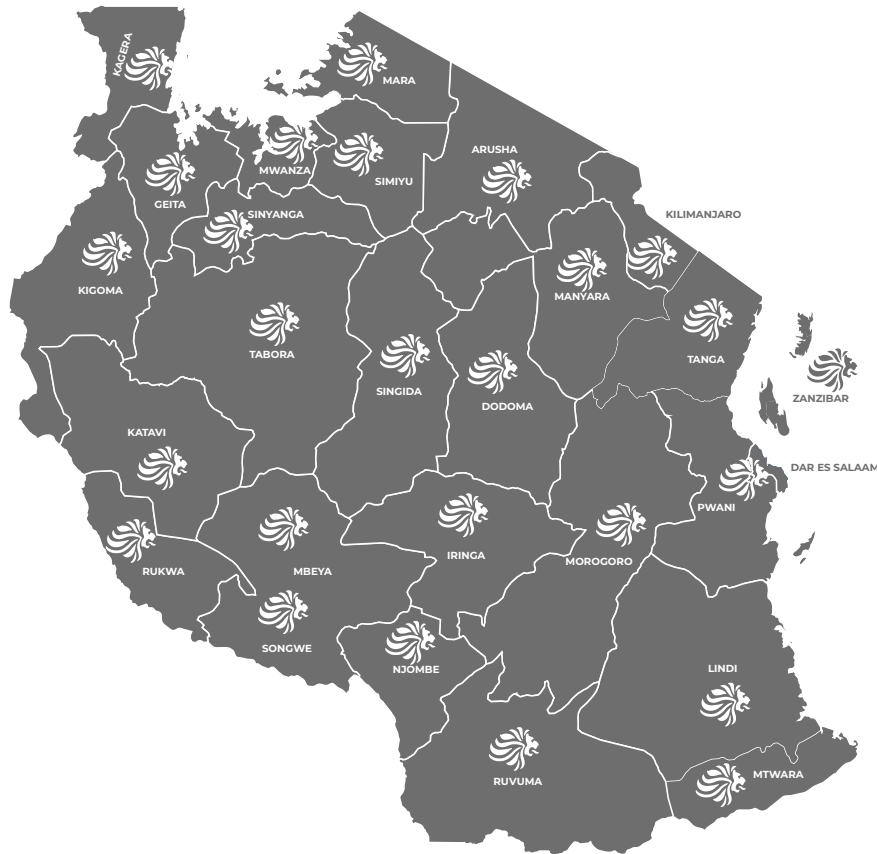
SIMBA GROUP EVOLUTION



ORGANIZATION STRUCTURE









SIMBA'S OFFICE BRANCHES AND WAREHOUSES



Coastal Zone Office	Southern Zone Office	Highland Zone Office	Central Zone Office
Dar es salaam	Mtwara	Mbeya	Dodoma
Regional Offices	Regional Offices	Regional Offices	Regional Offices
Dar es salaam Tanga - MC Zanzibar - Unguja Morogoro - MC	Mtwara - MC Lindi - MC Ruvuma - Songea Iringa - MC Njombe - Makambako	Mbeya - CC Songwe - MC Rukwa - Sumbawanga Katavi - Mpanda	Dodoma - CC Singida - MC Tabora - Nzega Kigoma - MC
	Northern Zone Office	Lake Zone Office	
	Arusha	Mwanza	
	Regional Offices	Regional Offices	
	Arusha - CC Kilimanjaro - Moshi Manyara - Babati	Kagera - Bukoba Geita - MC Mwanza - CC Mara - Musoma Shinyanga - Kahama Simiyu - Bariadi	

MC Municipal Council
CC City Council

SIMBA OPERATIONAL FACILITIES AND FLEET SIZE

Item Discription	Number of Vehicles	Dedicated Vehicles
	300 Semi Trailers	As per contract
	30 Mid Sized Trucks	As per contract
	2 Folklift	As per contract
	40 Supply chain Van	As per contract
	50 Supply chain Motorbike	As per contract
	3 Warehouses (3500sqm)	As per contract

Company-Owned Fleet Capacity

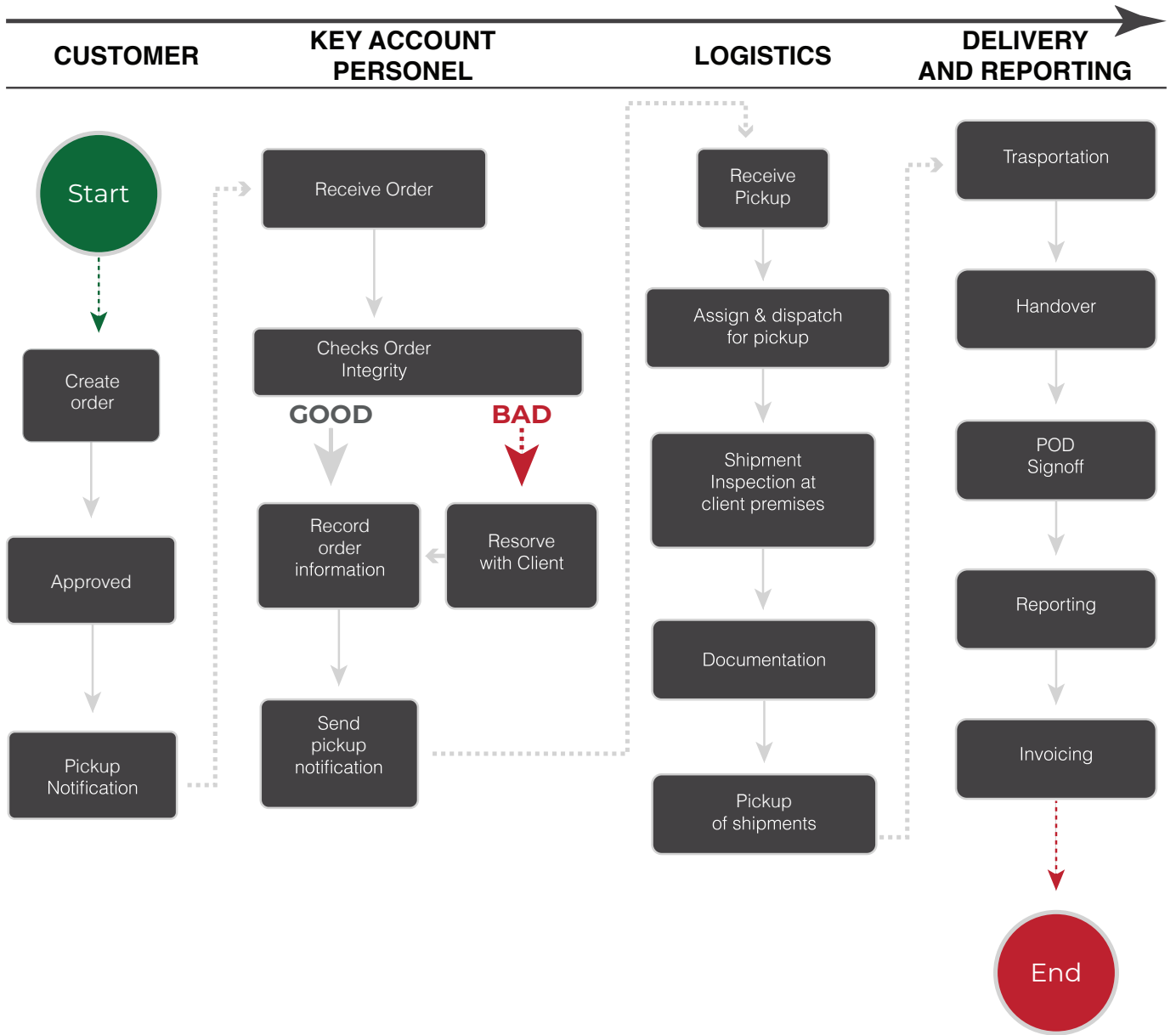
Type of Vehicle	Quantity	Vehicle Size	Encapsulated/Closed or Open	Location of Vehicle
Tipper	20	15 Tonnes	Open	Tanzania
Cranes	5	10 Tonnes	Open	Tanzania
Fork lift	5	3 Tonnes	Open	Tanzania
Flatbed/Stepdeck	300	30 Tones	153 Open, 130 Containerized 10 - Refregirated	Tanzania
Multi-axle Low Bed	5	30 Tonnes	Open	Tanzania
Mid Sized Trucks	10	3 tones	Closed	Tanzania
Vans	15	2.5 Tonnes	Closed (5-Refregirated)	Tanzania

SIMBA LOGISTIC EQUIPMENT SUPPLY LIMITED FINANCIAL STATEMENTS

CASH FLOW STATEMENT

	Actual 2021	Actual 2022	Actual 2023	Projected 2024	Projected 2025	Projected 2026	Projected 2027	Projected 2028	Projected 2029	Projected 2030
	USD	USD	USD	USD	USD	USD	USD	USD	USD	USD
OPERATING ACTIVITIES										
Net operating profit before tax	3,161,588	3,275,324	3,592,238	5,232,083	7,283,137	9,696,962	9,369,527	8,981,141	10,965,354	10,982,136
Adjustment for non-cash items:										
Adjustment for gain on assets revaluation	-	14,800,448	-	-	-	-	-	-	-	-
Depreciation of property and equipment	279,981	427,560	2,608,150	2,985,004	4,626,172	5,147,644	5,163,394	5,217,769	5,259,957	5,302,144
Operating profit before working capital changes	3,441,569	18,503,331	6,200,388	8,217,087	11,909,309	14,844,606	14,532,922	14,198,910	16,225,311	16,284,281
Working capital adjustments:										
Decrease/(Increase) in inventories	1,529	153	(5,684)	(276,306)	(14,100)	(14,805)	(15,546)	(16,323)	(17,139)	(17,996)
(Increase)/decrease in trade and other receivables	(3,356,756)	(1,990,645)	(5,295,145)	6,190,506	(1,066,732)	(894,659)	(16,033)	(16,834)	(625,041)	(73,775)
Increase/(decrease) in trade and other payables	377,210	88,871	3,934,024	(3,912,000)	183,455	16,235	(7,407)	(6,401)	11,056	(4,234)
Cash generated from operations	463,552	16,601,711	4,833,583	10,219,288	11,011,931	13,951,376	14,493,936	14,159,352	15,594,187	16,188,275
Tax paid	(970,113)	(970,661)	(1,060,187)	(1,569,625)	(2,184,941)	(2,909,088)	(2,810,858)	(2,694,342)	(3,289,606)	(3,294,641)
Net cash generated from operating activities	(506,561)	15,631,050	3,773,396	8,649,663	8,826,990	11,042,287	11,683,078	11,465,010	12,304,580	12,893,634
INVESTING ACTIVITIES										
Purchase of property plant & equipment	-	(15,670,134)	(3,278,879)	(3,654,727)	(11,523,762)	(95,375)	(42,000)	(145,000)	(112,500)	(112,500)
Capital work in progress	-	-	(3,688,790)	-	-	-	-	-	-	-
Net cash flow from investing activities	-	(15,670,134)	(6,967,669)	(3,654,727)	(11,523,762)	(95,375)	(42,000)	(145,000)	(112,500)	(112,500)
FINANCING ACTIVITIES										
Increase in Share Capital	-	-	-	-	-	-	-	-	-	-
Current account	1,573,087	2,170,895	10,837,810	-	-	-	-	-	-	-
Proceeds from bank borrowings	238,011	56,075	1,797,164	3,552,123	7,940,039	(1,915,360)	(1,915,360)	(1,915,360)	(1,915,360)	(1,915,360)
Investment	(1,309,670)	(2,182,608)	(7,739,131)	-	-	-	-	-	-	-
Net cash from financing activities	501,428	44,362	4,895,843	3,552,123	7,940,039	(1,915,360)	(1,915,360)	(1,915,360)	(1,915,360)	(1,915,360)
Net increase in cash and cash equivalents	(5,133)	5,277	1,701,570	8,547,059	5,243,268	9,031,552	9,725,718	9,404,650	10,276,720	10,865,774
Cash and cash equivalent at the beginning of the year	12,933	7,800	13,077	1,714,647	10,261,706	15,504,975	24,536,527	34,262,244	43,666,894	53,943,614
Cash and cash equivalent at the end of the year	7,800	13,077	1,714,647	10,261,706	15,504,975	24,536,527	34,262,244	43,666,894	53,943,614	64,809,388

STANDARD OPERATING PROCEDURES AND PROCESS FLOW





SIMBA
LOGISTIC EQUIPMENTS SUPPLY

SIMBA ADVANTAGE



COMPETATIVE ADVANTAGES & MARKET POSITIONING:

01

Established Reputation:

SLES stands out with a 16-year legacy in the logistics domain, consistently delivering superior transport solutions throughout Sub-Saharan Africa.

02

Expertise Concentration:

The company prides itself on a team of domain-specific experts, ensuring excellence in operations and unparalleled client satisfaction.

03

Collaborative Synergies

Engaging in strategic collaborations with governmental entities and key industry players, SLES secures vital support and resources, fuelling

04

Sustainable Commitment:

With a steadfast dedication to eco-friendly practices, SLES's operations are designed to yield a beneficial impact on both the environment and community welfare.

05

Market Growth Strategy:

SLES is strategically investing and initiating plans to broaden its market presence and affirm its status as a premier logistics entity in Tanzania.

To encapsulate, SLES is strategically positioned for advancement and is ready to play a significant role in fostering Tanzania's socio-economic growth. Centred around expansion, collaborative partnerships, and sustainable practices, SLES is determined to be a propellant in Tanzania's stride towards enduring development and shared prosperity.

SIMBA ADVANTAGES

Reliability

Leveraging our in-depth knowledge achieved over 16 years of experience within the Supply chain and Transportation industry, we have been able to tailor and adopt an approach that aims at fulfilling customer requirements at very competitive prices while ensuring the quality and efficiency of our services are not altered. Our compliance and adaptation of global safety standards and procedures have been a bridge in attaining complete customer satisfaction upon delivery of shipments to destined points.

Simba Supply chain mature deployment service model and rich experience in African Markets is demonstrated in several large-scale multi-country transportation service deployments.



Extensive Transportation and Handling Facilities

Leveraging our in-depth knowledge achieved over 16 years of experience within the Supply chain and Transportation industry, we have been able to tailor and adopt an approach that aims at fulfilling customer requirements at very competitive prices while ensuring the quality and efficiency of our services are not altered. Our compliance and adaptation of global safety standards and procedures have been a bridge in attaining complete customer satisfaction upon delivery of shipments to destined points.

Simba Supply chain mature deployment service model and rich experience in African Markets is demonstrated in several large-scale multi-country transportation service deployments.



Countrywide Network Coverage

In ensuring full coverage of our door to door delivery services and enhancing customer experience, our operational network cuts across the entire vicinity of Tanzania regions and districts through existence representational zonal and regional offices run by well trained professionals.

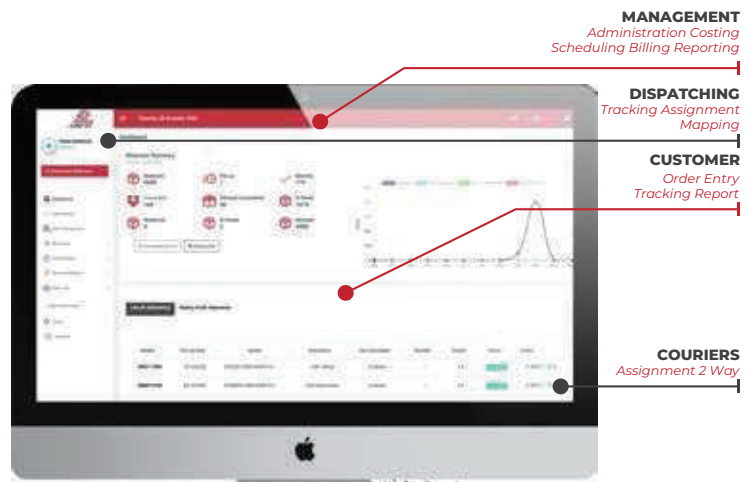


Supply chain Dispatch Software and User Platform

Simba Supply chain utilizes state of the art dispatching software to monitor, track and control each delivery.

We are keen to provide customer satisfaction and guarantee delivery of good quality services at all times exceeding SLA, and customer expectations made possible through technological integration and interfaces that we have in place, including the support team behind it.

With this belief we have gone and acquired a Smart Supply chain Software from one of the leading Supply chain solution providers on the market, and have it customized to Simba Supply chain requirements, that also are tailored to our customer needs and comply with Tanzania regulation. Illustrated by the diagram below



Simba Vehicle Tracking System

SLES has an established system that provides exact location information of vehicles and the consignment.

This will ensure Chemonics is able to acquire accurate estimate of consignment arrival and get real time trucks location in-case of emerging quarries. The system offers assurance of consignment security, visibility and safety through the following Targets:



Fully Insured

For the purpose of risk management in response to the scope of work, Simba Supply chain has existing insurance covers for:

- Good in Transit to protect the business from risks which may arise during transportation of consignments.
- Public Liability to cover the business for third part demanages resulting from company activities.
- Business Protection to secure the company from theft, fire etc.





SIMBA
LOGISTIC EQUIPMENTS SUPPLY

EXPERIENCE



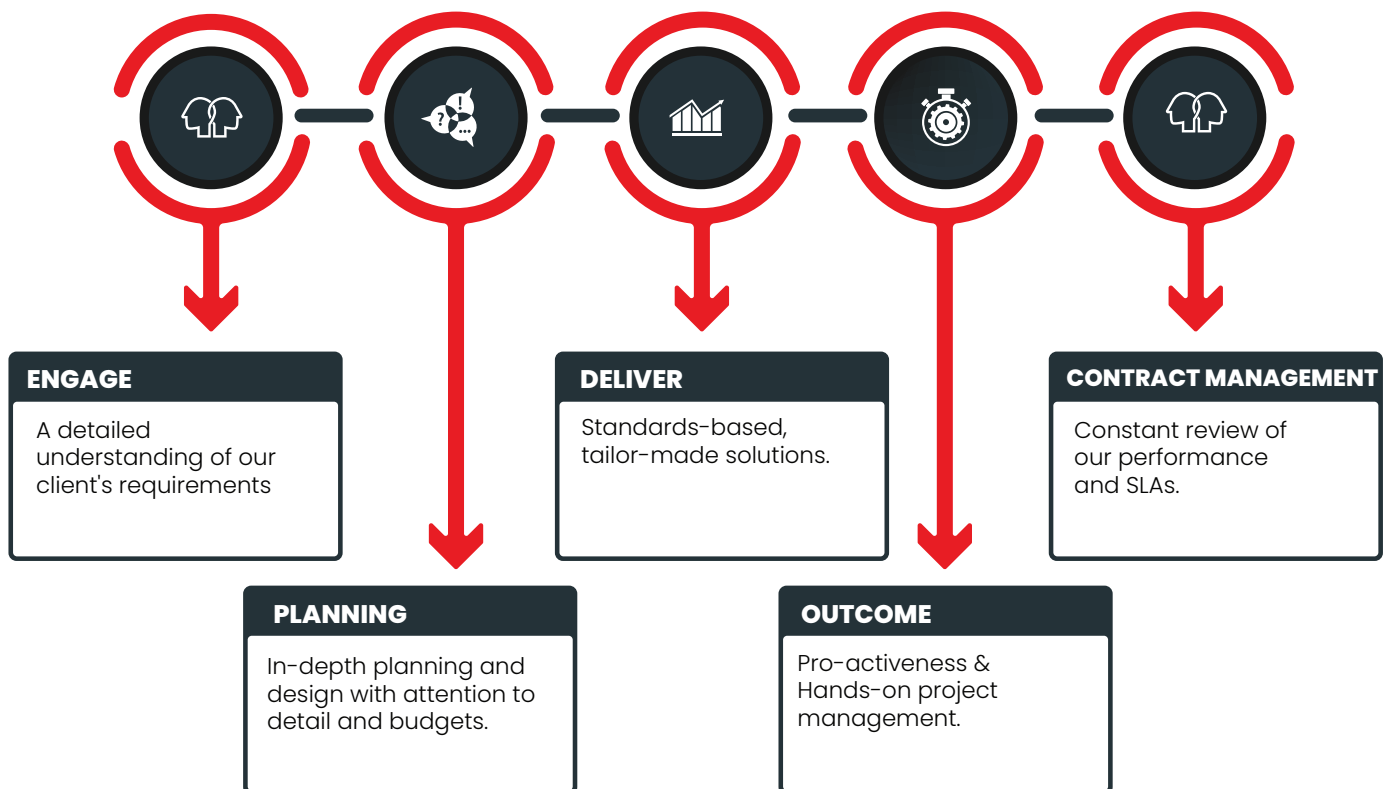
EXPERIENCE

We have worked extensively with Major donor-funded organizations, telecom operators, banks, and other significant players within Sub Sahara Africa. With operational transportation experience of over 14 years in Africa, we have gained in-depth knowledge of the country local supply chain requirements, People and Cultures.

SLES mature deployment service model and rich experience in African Markets is demonstrated in several large-scale multi-country logistics service deployments.

We have an intimate knowledge of the Africa supply chain environment and focus on:

- A detailed understanding of our client's requirements.
- Standards-based, tailor-made solutions.
- In-depth planning and design with attention to detail and budgets.
- Quality workmanship.
- Hands-on project management.
- Constant review of our performance and SLAs
- Pro-activeness
- Strategic business partnerships with clients



SIMBA'S EXPERIENCE WITH HEALTH PROJECTS



JOHNS HOPKINS CCP

SCOPE: DISTRIBUTION OF LLINs AND WAREHOUSING MANAGEMENT
DURATION: 6 YEARS - TO DATE
COVERAGE: COUNTRYWIDE



POPULATION SERVICE INTERNATIONAL

SCOPE: DISTRIBUTION OF LLINs AND WAREHOUSING MANAGEMENT
DURATION: 5 YEARS
COVERAGE: COUNTRYWIDE



ABT ASSOCIATES

SCOPE: TRANSPORTATION AND DISTRIBUTION OF LLINs, IFRS AND WHS
DURATION: 2 YEARS
COVERAGE: COUNTRYWIDE



MEDICAL STORES DEPARTMENT

SCOPE: TRANSPORTATION AND DISTRIBUTION OF HEALTH COMMODITIES
DURATION: 9 YEARS - TO DATE
COVERAGE: COUNTRYWIDE



REDCROSS TANZANIA

SCOPE: DISTRIBUTION OF LLINs AND WAREHOUSING MANAGEMENT
DURATION: 3 YEARS
COVERAGE: COUNTRYWIDE



FHI360

SCOPE: DISTRIBUTION OF FAMILY PLANNING COMMODITIES
DURATION: 3 YEARS
COVERAGE: COUNTRYWIDE



CENTRAL MEDICAL STORES

SCOPE: TRANSPORTATION AND DISTRIBUTION OF HEALTH COMMODITIES
DURATION: 7 YEARS - TO DATE
COVERAGE: COUNTRYWIDE



AMREF HEALTH AFRICA

SCOPE: TRANSPORTATION AND DISTRIBUTION OF HEALTH COMMODITIES
DURATION: 3 YEARS
COVERAGE: COUNTRYWIDE

CURRENT PROJECTS

COMMUNITY BASED



BUSINESS ORIENTED



MARKET ANALYSIS FOR LOGISTIC BUSINESS IN TANZANIA



Economic Expansion

The nation has witnessed robust economic expansion, fuelled by substantial investments in key sectors such as infrastructure, mining, agriculture, and manufacturing. This economic upturn has escalated the need for logistics services to support the internal and cross-border flow of goods.



Geographical Advantage

Tanzania's strategic position in East Africa makes it a pivotal conduit for regional and international trade. Its accessibility to neighbouring landlocked nations like Uganda, Rwanda, Burundi, and the Democratic Republic of Congo enhances its role as a vital center for transit commerce, demanding effective logistics solutions.



Infrastructure Advancements

The country is actively enhancing its infrastructure network, including the development of roads, railways, ports, and airports. These improvements are crucial in boosting connectivity and minimizing transport costs, offering logistics firms the chance to refine their operations and present competitive offerings.



Agricultural Prospects

Agriculture is a cornerstone of Tanzania's economy, with a significant contribution to employment and the GDP. Logistics entities such as SLES have the opportunity to serve the transportation needs for agricultural commodities, such as coffee, tea, tobacco, and horticultural goods, both for local consumption and export.



Urban & Industrial Growth:

With rapid urbanization and industrialization, Tanzania is seeing a surge in the demand for consumer products, construction materials, and industrial supplies. The expansion of urban areas necessitates adept supply chain management and distribution systems, providing logistics companies the opportunity to serve an array of market needs.



Regulatory Landscape

Despite advancements in the business climate, Tanzania still faces challenges like bureaucratic red tape, regulatory adherence, and customs procedures. Logistics firms must keep pace with the changing policies and regulations to maintain seamless operations.

SUSTAINABILITY STRATEGIES

These sustainability strategies align with SLES's goal of capitalizing on emerging opportunities while addressing market challenges in a sustainable manner. By integrating environmental, social, and economic considerations into its business operations, SLES will contribute to long-term sustainability while also enhancing its competitiveness in the market.

● **Fleet Expansion**

Given the increasing demands associated with the expanded service portfolio, investing in additional trucks and vehicles would be a strategic move. This expansion would enhance capacity and allow SLES to cater to a broader client base while maintaining service quality and reliability.

● **Infrastructure Development**

SLES has considered investing in more warehousing facilities, distribution centers, and transportation hubs to optimize the storage and movement of goods. Strategic placement of infrastructure will reduce transit times, lower costs, and improve overall logistics efficiency.

● **Human Capital Development**

Invest in training and development programs for employees to enhance skills, foster a culture of innovation, and improve service delivery. A skilled and motivated workforce is essential for maintaining high standards of performance and adapting to market changes.

● **Technology Integration**

Investing in technology solutions such as fleet management systems, route optimization software, and digital tracking platforms can improve operational efficiency, enhance real-time monitoring capabilities, and provide value-added services to clients. Embracing digitalization will be crucial for staying competitive in the evolving logistics landscape.

● **Market Expansion**

Consider investing in market research and market entry strategies to identify new geographic markets or industry sectors with growth potential. Expansion into adjacent markets or diversification of services will mitigate risks and unlock new revenue streams.

● **Partnerships and Collaborations**

Explore strategic partnerships with government entities, Manufacturers, Suppliers, agriculture sectors, technology providers, and other stakeholders to leverage complementary strengths, access new markets, and drive innovation. Collaborations will enhance competitiveness and create mutually beneficial opportunities for growth.



SIMBA
LOGISTIC EQUIPMENTS SUPPLY

HEALTH AND SAFETY



SIMBA LOGISTIC HSQE FRAMEWORK

A large, stylized number '1' with a blue outline and a white-to-blue gradient fill, pointing to the right.

Develop a culture where safety, good housekeeping caring for our environment is second nature

A large, stylized number '2' with a blue outline and a white-to-blue gradient fill, pointing to the right.

Set an organisational structure that has defined roles and responsibility, with set key performance objectives which must include safety, health and environmental measures

A large, stylized number '3' with a blue outline and a white-to-blue gradient fill, pointing to the right.

Identify hazards and potential impacts and consequences

A large, stylized number '4' with a blue outline and a white-to-blue gradient fill, pointing to the right.

Evaluate the risks from the identified hazards against screening criteria, taking into account the likelihood of occurrence and severity of the consequences Compare these risks against SHE objectives and targets set for the project

A large, stylized number '5' with a blue outline and a white-to-blue gradient fill, pointing to the right.

Implement management measures to eliminate the risk or reduce it to acceptable levels Measures can include reducing the probability of occurrence and/or the consequences of the hazard Management measures include steps to prevent escalation of the aspect and to reduce the effects

A large, stylized number '6' with a blue outline and a white-to-blue gradient fill, pointing to the right.

Establish recovery preparedness measures (including emergency procedures) as well as restoration and compensation procedures

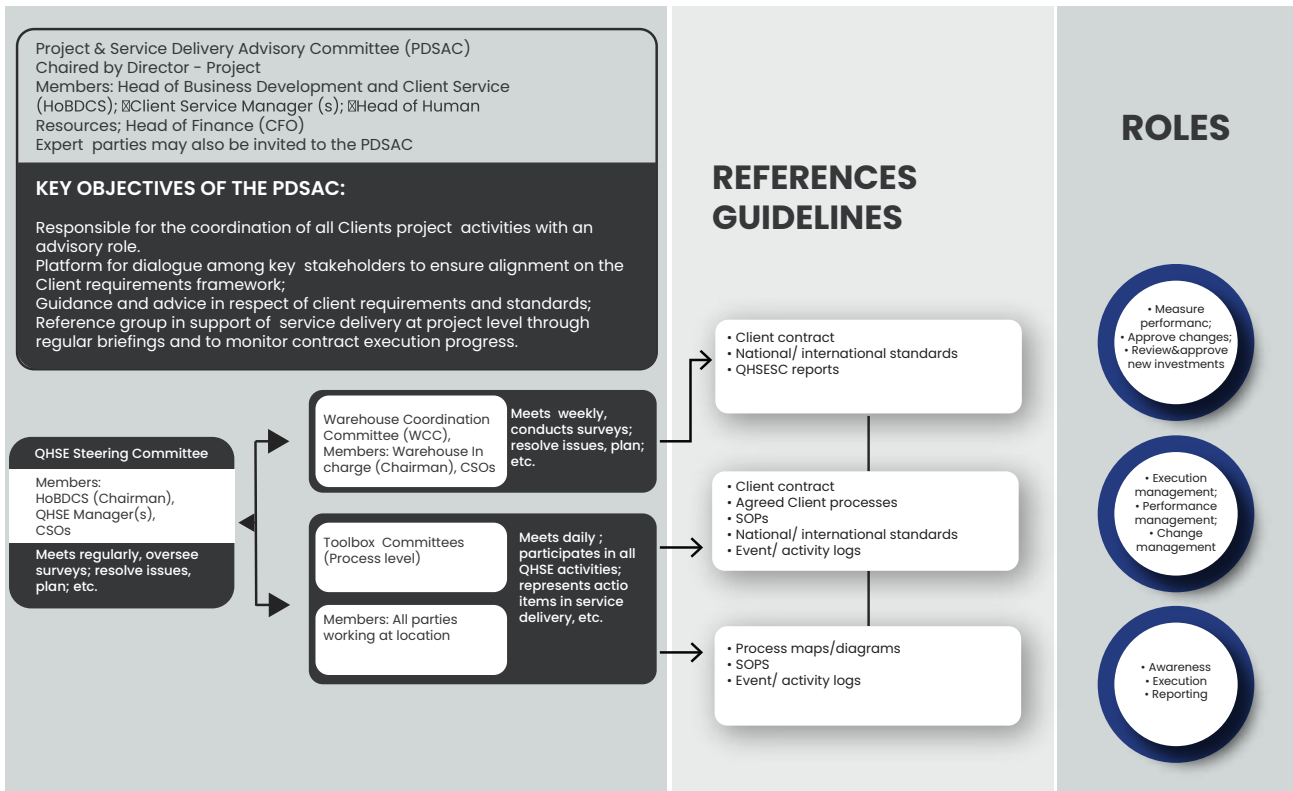
A large, stylized number '7' with a blue outline and a white-to-blue gradient fill, pointing to the right.

Design a comprehensive training system

A large, stylized number '8' with a blue outline and a white-to-blue gradient fill, pointing to the right.

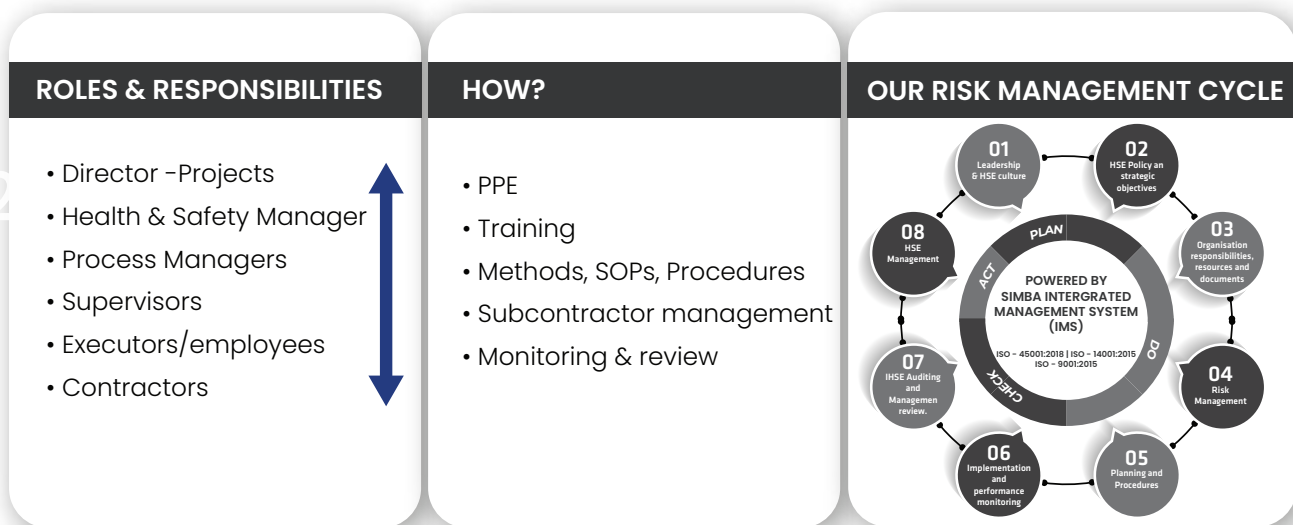
Carry out **auditing** to confirm that we are doing what we say and ensure any deficiencies are closed in a timely manner

HOW HSQE FITS INTO SLES OPERATIONS



HEALTH AND SAFETY (QHSE IMPLEMENTATION)

HSE FRAMEWORK





CONCLUSION

The expansion of Simba Logistic Equipment Supply's fleet capacity and operations within Tanzania, presents a significant opportunity for growth and development, not only for our company but also for the Tanzanian economy as a whole. With our commitment to excellence, sustainability, and corporate social responsibility, we are poised to make a positive impact on the logistics sector in Tanzania while contributing to job creation and economic prosperity.

However, to fully realize this potential, we recognize the importance of government support and collaboration. We seek to partner with the Tanzanian government and relevant agencies to streamline regulatory processes, access necessary permits and licenses, and leverage available resources and incentives for businesses investing in the country.

By working hand in hand with the government, we can overcome barriers to entry, accelerate our expansion plans, and ensure the success of our operations in Tanzania. Together, we can create a conducive environment for business growth and foster a vibrant logistics ecosystem that benefits both our company and the people of Tanzania.

We are optimistic about the future of Simba Logistic Equipment Supply in Tanzania, and we are committed to playing our part in driving economic development and prosperity in the region. Thank you for considering our business plan and for your support as we embark on this exciting journey of growth and expansion.



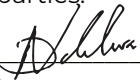
ENVIRONMENTAL MANAGEMENT SYSTEM POLICY STATEMENT

Simba Logistic Equipment Supply Ltd Top management has identified environmental management as one of its corporate priorities in the context of the organization. We are committed to provide high quality Supply Chain Management services, in the business of Logistic Warehouse Management, Product Distribution and Delivery, Freight Forwarding Services, and Transportation of Bulk Petroleum Products including Dry Cargo to all our interested parties having established policies, programs and practices that reduce risk to the environment and the organization as well as conduct business activities in an environmentally sound manner.

We are committed to environmental management and shall:

- Integrate our environmental policies and procedures fully into all business activities as a critical element,
- Comply with all environmental legislation, standards and contract requirements that are applicable to the company's operation that conform to ISO 14001:2015,
- Continually improve our environmental performance and prevention of environment impact and taking into account current best practice, technological advances, current scientific understanding, customer and community needs, educate, train and promote employees to work in an environmentally responsible manner,
- Complete environmental assessments for aspects and impacts of all new activities that the company may undertake, promote, develop and design services, facilities, equipment and work practices that have the least environmental impact, taking into account the efficient use of energy and materials, the sustainable use of renewable resources and the responsible disposal of waste, thereby minimizing any serious or irreversible environmental degradation,
- Promote and encourage the adoption of these principals by suppliers and contractors acting on behalf of Simba Logistic Equipment Supply Ltd,
- Develop, implement and maintain emergency preparedness plans,

We shall foster openness and dialogue with both employees and the public, encouraging them to respond with their concerns or improvement ideas within the scope of the organization's operations and maintain a set of environmental objectives and targets that are monitored through the management review process to ensure effectiveness. This policy shall be effectively communicated within the organization and made available to all interested parties.

Signed  _____
Group CEO

Date: 01.10.2021



Certificate of Registration



This is to certify that Environmental Management System of

SIMBA LOGISTIC EQUIPMENT AND SUPPLY

Siwa road, Mikocheni Industrial Area, P.O.Box 40451, Dar es salaam - Tanzania

is in accordance with the requirements of the following standard

ISO 14001:2015

(Environmental Management System)

SCOPE

Provision of Transport and Logistics Services

Certificate Number : 140823022517

Initial Registration Date : 14-Aug-2023
1st Surveillance Date : 14-Jul-2024
2nd Surveillance Date : 14-Jul-2025
Certificate Expiry Date : 13-Aug-2026

To verify certificate, visit at :

www.arscert.com
<https://uafaccreditation.org>
<https://www.iafcertsearch.org/>

Issued by ARS Assessment Private Limited

Managing Director



CB-MS-3926



UAF Address : 400, North Center Dr, STE 202, Norfolk, VA 23502, United States of America :

This certificate remains the property of ARS and must be returned to ARS on Cancellation or Suspension of the certificate Validity of the certificate is subject to successful completion of surveillance audits. Further clarification regarding the scope of this certificate and the applicability of standard may be obtained by consulting the Organisation on info@arscert.com



SIMBA LOGISTIC E.S. COMPANY LIMITED

Plot 71, Siwa Road, Mikocheni Industrial Area
P.O.Box 40451, Dar es salaam – Tanzania

