



KILUWA STEEL GROUP COMPANY LIMITED



COMPANY PROFILE 2019



CONTENTS

Pg 02 About Us

Pg 04 Company's Core Values

Pg 07 Organizational Structure

Pg 09 Production of Steel Bars

Pg 10 Quality Guarantee

Pg 12 Corporate Social Investment

Pg 14 Labor Ethics

Pg 03 Mission and Vision

Pg 06 Managing Director's Report

Pg 08 Steel-rolling Workshop

Pg 09 Quality Guarantee

Pg 11 TBS Licence

Pg 13 The factory, People and Welfare

Pg 15 Labor Ethics

ABOUT KILUWA

Kiluwa Steel group company limited was set up in January 23rd,2014. Kiluwa factory produces high quality steel bars. It has a commanding presence in Tanzania with its factory located in Mlandizi,Disunyara area. About 70 kilometers from Dar es Salaam.



MISSION

Kiluwa's key objective is to produce high quality Steel bars and market them. Also high quality brands while creating meaningful employment opportunities

VISION

To be the most admired, innovative, accessible highest quality products/brands in the region, by the most efficient, dynamic, and responsible, organization generating sustainable returns to stockholders in the region



COMPANY CORE VALUES

INTEGRITY

We will be open and honest in all our engagement with the company and we will maintain the highest integrity at all times.

CUSTOMER DRIVEN

We will focus on satisfying our customer needs & demands through innovative high quality products and delivered through efficient distribution channels for the benefit of our end consumers with view to attract our products over the competition.

SENSE OF URGENCY

We will work with a sense of urgency and commitment to achieving timely delivery of company goals to outpace our competition every time.

TEAM DRIVEN

We will build a performance driven team by listening to and respecting each other's contribution towards achieving mutually beneficial results.

CORPORATE RESPONSIBILITY

We will operate within the laws, rules and regulation in the countries where we operate. The public will admire our company for our products and for being good corporate citizens





Shusheng Wang

.....
Managing Director, KSG

MANAGING DIRECTOR'S REPORT

“Certifications to Kiluwa Steel is a testimony that the Company believes that success depends on the supply of high quality products and services that meet, or exceed, customer and consumer expectations.”

KILUWA STEEL COMPANY LIMITED

With the humble beginning in early 2014's Kiluwa Steel has grown to become a Great East African Steel company that offers, Steel rolling, rollers, materials and deep processing of metal products to our customers around the globe. Our products are trusted in East Africa and earned its name to be a leading quality Steel company in the region. Certifications to Kiluwa Steel is a testimony that the Company believes that success depends on the supply of high quality products, packages and services that meet, or exceed, customer and consumer expectations

SALES

The Tanzanian economy continued to grow at healthy rate during 2015, setting a positive scene for Kiluwa Steel Company's performance. Kiluwa Steel Company Limited through its reputable brands increased sales volume compared to last year 2015.

OPERATIONS

For Kiluwa Steel Company Limited, 2015 and 2016 are truly remarkable years, with a number of new records being set. In the area of safety, a key priority for Kiluwa Steel Company Limited, the company still maintains a 0.67 Lost Time Injury Frequency Rate, which is an excellent performance by industry standards and an impressive improvement over the last year. We salute our employees for their commitment and all the hard work they put in daily to support the company's drive for operational excellence

GIVING BACK TO THE COMMUNITY

Our commitment to social development upholds the principles of giving back to the lives, which the company touches, either directly or indirectly. Supporting the long-term well-being of the communities in which the company operates. Kiluwa contribution to the Tanzanian society is immense; from steel processing to transportation to different areas in Tanzania is all benefit to have a decent salary for their efforts. Steel industry in Tanzania will continue to help to alleviate millions from poverty to prosperity and we are all in this journey to make it happen by promoting and marketing Kiluwa Steel Company, and we invite you to be part of this process.

FUTURE PROSPECTS

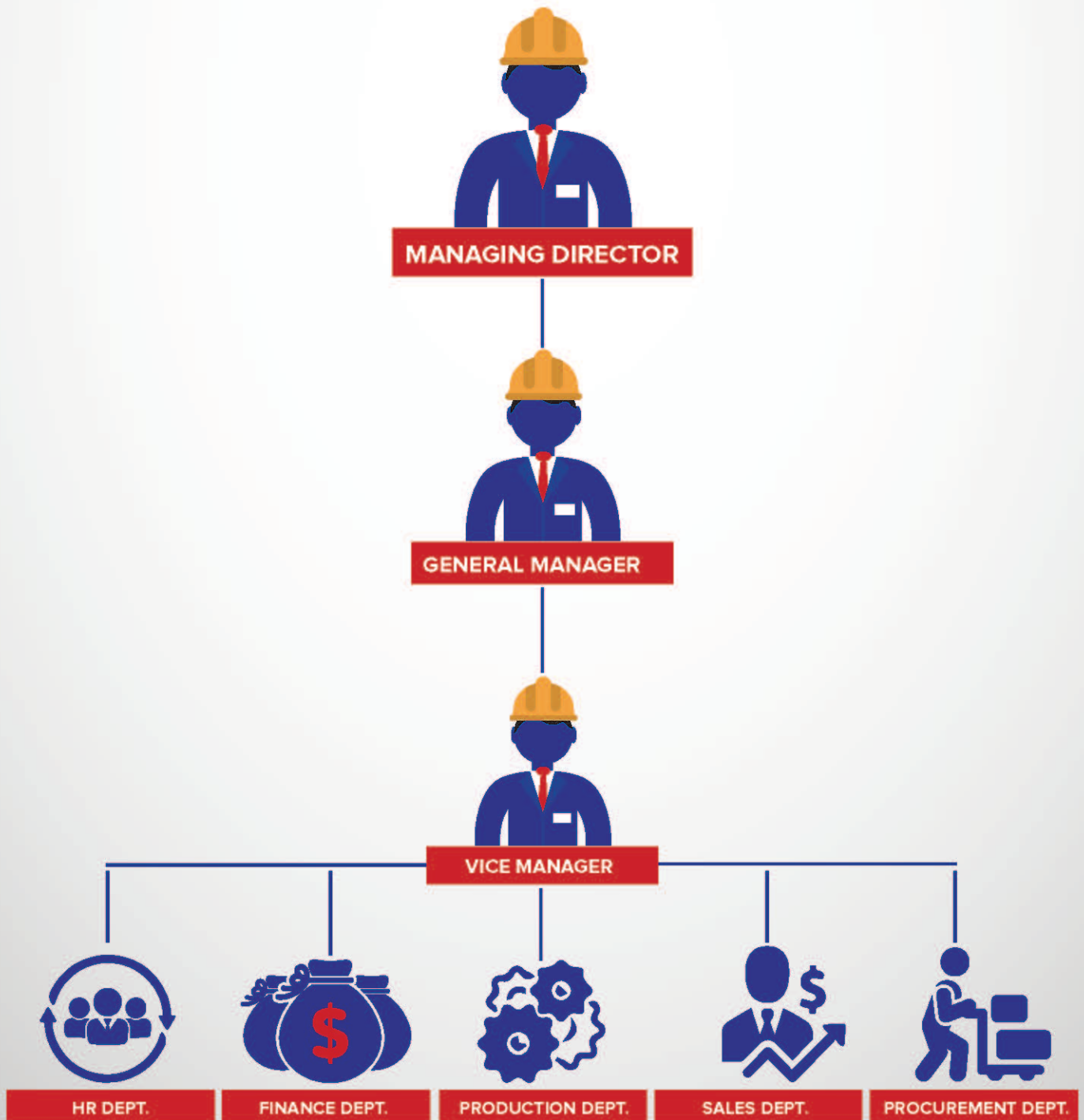
The positive market development experienced during last decade, not only in Tanzania but also in the entire region, is expected to continue into the foreseeable future. With trade barriers being reduced between the various members of the East African Community, the region is moving closer to becoming a truly common market. This is expected to trading opportunities across national borders and enhances trade within the region, although it will also further increase competition. With dedicated and experienced staff, we are confident that Kiluwa Steel Company Limited is on track to face these challenges. Lastly, I would like to acknowledge the outstanding performance and commitment from the senior management to superb guidance from Board of Directors, without forget to mention our staff for their dedication to work hard and produce better results for the company.

Shusheng Wang,

.....
Managing Director, KSG

ORGANIZATIONAL STRUCTURE

Strictly and Scientific organizational structure and management are the objective requirements come up with by socialized production for modern enterprises. On the basis of making long term development goals, Kiluwa Steel Group Company Limited absorbs the domestically and internationally advanced management experience. Centering on the goal, the company has effectively absorbed the modern operation and management philosophy into every system of the enterprise.



STEEL-ROLLING WORKSHOP

The group carries out specialized and scaled production for construction steels by advanced professional equipment, leading technology and strict production and processing control. With the latest imported first class steel rolling production lines, the company has reached the first class level of the industry throughout the nation in terms of not only the properties of the equipment but the quality it reaches in the production process.



PRODUCTION OF STEEL BARS

INTELLIGENTIZATION AND MODERNIZATION

The superior hardware facilities of the company are the powerful guarantee for high quality products. In order to guarantee the high quality of products and the brand of the enterprise, Kiluwa people, on the basis of the long term development goal and depending on the unique perspective and exceptional tolerance, have imported the hot rolling production equipment of internationally advanced level and established a complete set of production process characterized in intelligentization, modernization and standardization, the intelligent production, operation and quality control system assuring the perfect quality and the implementation of the brand strategy of the enterprise in a fundamental way.



QUALITY GUARANTEE

The company strictly implements the BS4449:2005 standards and has passed the ISO 9000 International Quality System Certification. It complies with these standards throughout the entire operation of the enterprise in a sustainable and effective way and further passes the supervision and approval of National Metallurgical Industry Quality Certification Center. Absorbing a number of outstanding and renowned experts, the company sets up research institutes for development of new products and quality control, equips with steel tensile testing, direct reading spectrograph, hardness testing, mechanical test, metallographic examination and equipment for ultrasonic flaw detection offering reliable guarantee for the product.

Continuously research on and develop roller products with high technology dedicated to creating renowned enterprise brand.





TANZANIA BUREAU OF STANDARDS
SHIRIKA LA VIWANGO TANZANIA
P. O. Box 9524 DAR ES SALAAM

LICENCE
to use the Mark of the Bureau

No. 1919

1. By Virtue of the power conferred on it by the STANDARDS ACT, 1975* the BUREAU hereby grants to **M/S KILUWA STEEL GROUP CO LTD PWANI MLANDIZI of P.O.BOX 70241, PWANI, PWANI** (hereinafter called "the licensee") this licence to use the Standard Mark set out in the first column of the first Schedule hereto upon and in respect of the article(s) set out in the second column of the said Schedule which is (are) manufactured in accordance with the related TZ Standard (s) referred to in the third column of the said Schedule as from time to time amended or revised.
2. This licence carries the rights and obligations stipulated in the regulations made under the above mentioned Act. In pursuance of his obligations, the licensee shall pay in due manner and time the scheduled Marking Fee set out in the Second Schedule hereto and maintain to the satisfaction of the Bureau, the Scheme of Inspection and Testing a copy of which is attached hereto.
3. This licence shall be valid from **2017-06-09 to 2018-06-08** and may be renewed as prescribed in the Regulations.

Signed and sealed for an on behalf of the Bureau

Prof. Egid. B. Mubofu
DIRECTOR GENERAL

Signed by the Licensee

Date: 2017-06-09

SCHEDULE

Standard Mark	Goods in respect of which the use of the Mark is granted	Tanzania Standard(s) according to which the goods are to be produced
	REINFORCED STEEL BARS	TZS 142

*As amended in 2009

FORM B

CORPORATE SOCIAL INVESTMENT

GIVING BACK TO THE COMMUNITY

Our commitment to social development upholds the principles of giving back to the lives, which the company touches, either directly or indirectly. Supporting the long-term well being of the communities in which the company operates.

This year, Kiluwa Steel group Company Limited engaged in social projects in the area of education. Kiluwa Steel sponsored Kilangalanga school in Disunyara.



THE FACTORY, PEOPLE AND WELFARE

Kiluwa factory is located in Mlandizi, about 70 kilometers from Dar es Salaam. Factory has 60 employees. Kiluwa Steel products are of good quality. Kiluwa factory performs quality check at all stages of Steel processing.

Kiluwa Steel Company Limited ensures that all workers to have proper uniforms for their allocated positions. Our environment are clean and well maintained. We provide breakfast and lunch for our employees who works during a day shift and provide tea for those who works in night shift. Kiluwa Steel also offers to its employees a two hours during a day to take a nap. We offer 30 days leave annually for each employee. Our company has healthy insurance for skilled and unskilled workers. We also have clinic at the factory for the first aid treatment, if the employee is in critical condition we refer him/her to the government hospital which is near the factory. Factory paper and plastic wastes are disposed through common municipal council waste disposal system.

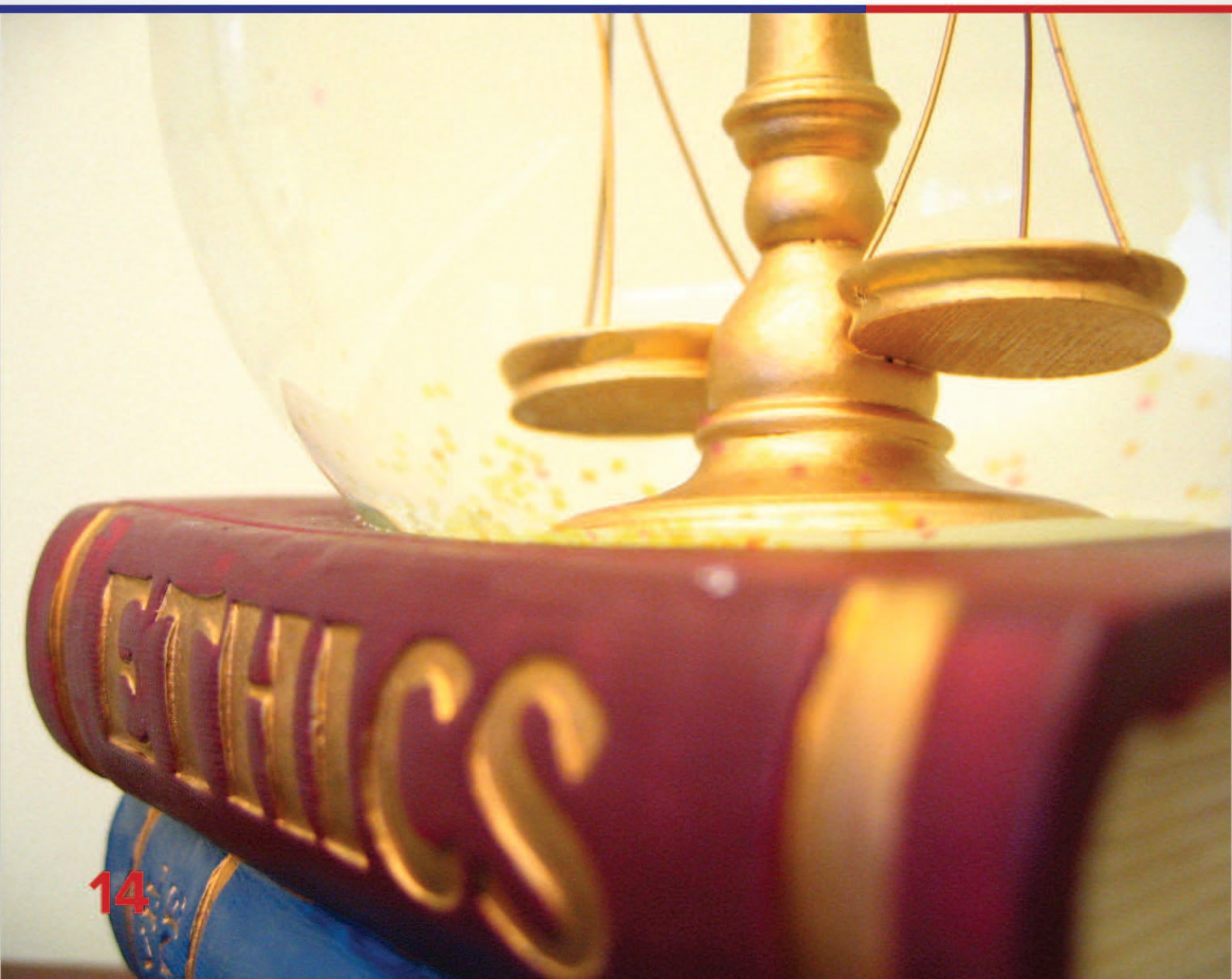


LABOR ETHICS

What recruiting procedures are followed before employing workers?

Demonstrate that Kiluwa Steel adheres to all legal parameters placed by the government in line with the recommendations by the International Labor Organization

- This should indicate that the company is not biased towards gender, religion or race in employing workers
- Show how different abled people have been engaged (if there is a disabled person employed in the factory it would be of vital interest for this person to tell his/her story/experience at work)
- That it does not entertain child labor





SALES AND DISTRIBUTION

Highland Villa, Mikocheni, Tanzania

Enoch Yu (Sales Manager)

 +255(622)577 777

 agapeenochyu@gmail.com

 www.kiluwasteel.com

FACTORY

5km after Mlandizi sokoni, Mlandizi, Tanzania

Michael Wang

 +255 (622) 667 788,

 kiluwasteel@gmail.com