



BUSINESS PLAN

ELDORADO HOLDINGS TANZANIA LIMITED

“Your Tanzanian partner for mining and rentals. They dig for gold, rent you the tools all while aiming to be a responsible leader in the region's growth. Think one-stop shop for your Tanzanian adventure!”

Prepared by;
Witness Airo

February 2024

I. EXECUTIVE SUMMARY

ELDORADO HOLDINGS TANZANIA LIMITED, headquartered in Dar es Salaam, Tanzania, is set to redefine the gold processing industry in the Chunya region. Founded by a team with extensive experience and a steadfast commitment to excellence, our primary mission is to excel in all aspects of gold processing, with a central focus on Carbon-in-Leach (CIL) and Refinery operations.

With a wealth of expertise, we ensure the efficiency and environmental responsibility of gold extraction processes. Our comprehensive suite of gold processing solutions, spanning Carbon-in-Leach (CIL) for extraction and Refinery for purification and refining, adheres rigorously to the highest industry standards.

At ELDORADO HOLDINGS TANZANIA LIMITED, we are devoted to sustainability and environmental responsibility, striving to minimize our ecological impact while maximizing the value of the precious metals we extract. As we embark on our operations in Chunya, Tanzania, we anticipate building strong foundations in the region before expanding our footprint.

Financial projections are promising, with a projected return on equity of [insert your projected percentage here] in the first year. ELDORADO HOLDINGS TANZANIA LIMITED is committed to making a lasting impact on the gold processing industry in Chunya and beyond. We fuse innovation, excellence, and an unwavering commitment to responsible practices as we embark on this journey towards a prosperous future.

Contents

- I. EXECUTIVE SUMMARY 2
- II. BACKGROUND 5
- III. DESCRIPTION OF PRODUCTS 5
- IV. MARKET DESCRIPTION 5
- V. COMPETITION 6
- VI. MARKETING STRATEGIES 6
 - 1. Client Relationship Management: 6
 - 2. Personalized Communications 7
 - 3. Consultative Selling 7
 - 4. Timely Follow-Ups 7
 - 5. Feedback and Continuous Improvement 7
- VII. MANUFACTURING PLANS 7
 - A. Carbon-in-Leach (CIL) Process 7
 - B. Refinery Operations 7
- VIII. FINANCIAL PLAN 12
 - START UP COST 12
 - REVENUE STREAM 14
 - Year 1 (Monthly/Quarterly) - Income Statement 15
 - Years 2 to 5 (Annually) - Income Statement 15
 - Year 1 - Balance Sheet 16
 - Year 5 - Balance Sheet (Target) 16
 - Years 1 to 5 - Cash Flow Statement (Annually) 17
 - Financial Assumptions 17
 - Break-Even Analysis 17
- IX. SUSTAINABILITY AND GROWTH 18
 - A. Market Expansion 18
 - B. Diversification 18
 - C. Sustainable Practices 18
 - D. Innovation 18
 - E. Partnerships and Alliances 18
 - F. Employee Development 19
 - G. Financial Resilience 19

H.	Monitoring and Evaluation	19
I.	Community Engagement.....	19
X.	RISKS AND CHALLENGES	20
A.	Market Volatility	20
B.	Regulatory Compliance	20
C.	Technological Obsolescence	20
D.	Supply Chain Disruptions	20
E.	Economic Downturns	20
F.	Competition.....	20
G.	Environmental Impact.....	20
H.	Workforce Challenges:	21
I.	Geopolitical Risks:	21
J.	Health and Safety	21

II. BACKGROUND

ELDORADO HOLDINGS TANZANIA LIMITED is poised to make a significant impact in Chunya, Tanzania, within the gold processing industry. Founded by a team of industry veterans and visionaries, our commitment to excellence, innovation, and environmental responsibility drives our mission. Drawing inspiration from the rich potential of precious metals, we have embarked on a journey to establish a lasting legacy in gold processing within our region. With a focus on expertise and a commitment to best practices, ELDORADO HOLDINGS TANZANIA LIMITED aspires to redefine industry standards and contribute to the sustainable development of our local and global mining communities.

III. DESCRIPTION OF PRODUCTS

ELDORADO HOLDINGS TANZANIA LIMITED specializes in a comprehensive range of gold processing activities, with a primary focus on two core components: Carbon-in-Leach (CIL) and Refinery operations. Our mission is to excel in all facets of gold processing, ensuring the optimization of precious metals while maintaining the highest industry standards.

Our flagship product, the CIL process, forms the bedrock of our operations. This advanced technology harnesses the power of carbon to efficiently extract gold from ore. Supported by a team of highly skilled experts, we manage every aspect of the CIL process, from initial extraction to final purification and refining.

In parallel, our state-of-the-art Refinery complements the CIL process, allowing us to further enhance the purity and quality of the extracted gold. Through advanced techniques and a commitment to environmental responsibility, we refine the gold to meet the most stringent industry standards.

Our unwavering dedication to sustainability and responsible mining practices underpins every product we offer. At ELDORADO HOLDINGS TANZANIA LIMITED, we take immense pride in our meticulous approach, and we aspire to become a trusted name in the gold processing industry. Our commitment to excellence and innovation is evident in every ounce of gold we process, forging a path toward a brighter and more responsible future in gold extraction and refining.

IV. MARKET DESCRIPTION

ELDORADO HOLDINGS TANZANIA LIMITED is strategically positioned in Chunya, Tanzania, a mineral-rich region that offers abundant opportunities in the gold processing industry. Our operations are marked by a steadfast commitment to excellence, innovation, and sustainability.

Within this local market, we harness the geological wealth of Chunya, focusing on vital gold processing activities such as Carbon-in-Leach (CIL) and refining. Our approach aligns with the unique demands and prospects of this region, bolstering economic growth and adhering to the highest industry standards.

Beyond the local landscape, we acknowledge the global relevance of gold processing. ELDORADO HOLDINGS TANZANIA LIMITED engages with the international mining community, driven by a vision to become a trusted name in the global gold processing industry. With expertise in CIL, refining, and other gold processing activities, we are poised to make a substantial impact on a worldwide scale.

V. COMPETITION

In the vibrant landscape of the gold processing industry in Chunya, Tanzania, ELDORADO HOLDINGS TANZANIA LIMITED acknowledges the presence of both established players and emerging contenders. The competitive environment in this sector is marked by a shared commitment to extracting and processing precious metals with precision and efficiency.

Established companies within our local market have a commendable track record and a deep understanding of the unique geological characteristics of the region. They have solidified their positions through years of experience, extensive infrastructure, and established customer relationships.

In addition to local competitors, the global gold processing industry presents a broader landscape. International players, with their vast resources and access to advanced technologies, are key participants in this sector, further intensifying competition.

ELDORADO HOLDINGS TANZANIA LIMITED embraces this competitive backdrop as an opportunity for growth and innovation. We enter this arena with a dedicated focus on excellence, innovation, and environmentally responsible practices. Our commitment to sustainable operations, combined with our strategic vision, positions us to not only compete but also thrive in this dynamic environment.

As we embark on this journey, we recognize that competition is a driving force for improvement and innovation. We are poised to carve our niche in the market, delivering exceptional value and contributing positively to the gold processing industry in Chunya, Tanzania, and beyond.

VI. MARKETING STRATEGIES

At ELDORADO HOLDINGS TANZANIA LIMITED, we are unwavering in our commitment to implementing comprehensive marketing strategies that resonate with our mission of excelling in gold processing. This includes the operation of our CIP (Carbon-in-Pulp) Plant Refinery, as well as vital supporting activities such as CIL (Carbon-in-Leach) and refining. Our strategies are meticulously designed to build a robust brand presence, connect intimately with our target audience, and foster sustainable growth in Chunya, Tanzania, and potentially beyond. The cornerstones of our marketing approach encompass:

1. **Client Relationship Management:** Implement a robust client relationship management (CRM) system to track interactions and communications with potential clients. This will

help you understand their needs, preferences, and the stage of the sales funnel they are in, allowing you to tailor your communications accordingly.

2. **Personalized Communications:** Send personalized emails and messages to potential clients, addressing their specific needs and concerns. Share case studies, success stories, and testimonials that demonstrate your expertise and the value you can provide.
3. **Consultative Selling:** Take a consultative approach to sales. Rather than simply promoting your services, engage potential clients in conversations about their specific challenges and goals. Offer insights and solutions that align with their needs, showcasing how ELDORADO HOLDINGS TANZANIA LIMITED can address their unique requirements.
4. **Timely Follow-Ups:** Consistently follow up with potential clients at appropriate intervals. This can include sending relevant information, scheduling meetings, or providing updates on industry developments. Timely and proactive follow-ups demonstrate your commitment to their needs.
5. **Feedback and Continuous Improvement:** Encourage feedback from potential clients regarding their interactions with your company. Use this feedback to continually improve your sales and marketing processes. Show potential clients that their input is valued and that you are dedicated to providing exceptional service.

Our marketing strategies reflect our commitment to excellence, innovation, and sustainability in gold processing. We are dedicated to becoming a trusted partner in the industry, offering top-tier solutions while contributing positively to the communities we serve.

VII. MANUFACTURING PLANS

ODHL Mines Private Limited's manufacturing strategy revolves around optimizing all gold processing activities, with a particular emphasis on two core components:

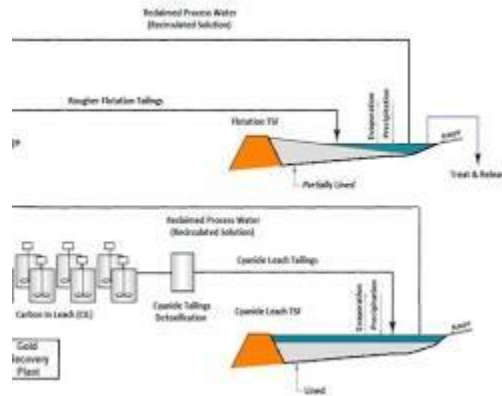
- A. **Carbon-in-Leach (CIL) Process:** We are dedicated to refining and enhancing our CIL process to ensure optimal gold extraction and recovery. Our manufacturing plans include continuous improvements to this crucial stage, focusing on efficiency, quality, and environmental responsibility.
- B. **Refinery Operations:** The heart of our manufacturing operations lies in our state-of-the-art refinery. We are committed to operating and maintaining this facility at the highest standards of excellence. This includes stringent quality control measures to ensure the purity and quality of the extracted gold.

Our manufacturing strategies prioritize efficiency, quality control, and environmental stewardship. By continually refining our gold processing techniques and adhering to strict safety

and environmental protocols, we aim to excel in gold extraction and processing, meeting and exceeding industry standards.

Here are some drawings to illustrate the CIL plant gold processing mechanism step by step:

Step 1: Crushing and grinding



Crushing and grinding step in CIL plant gold processing mechanism

The gold ore is crushed and ground to a fine powder using a variety of equipment, such as crushers, grinders, and ball mills. The finer the ore is ground, the more gold particles will be liberated, and the higher the gold recovery will be.

Step 2: Leaching

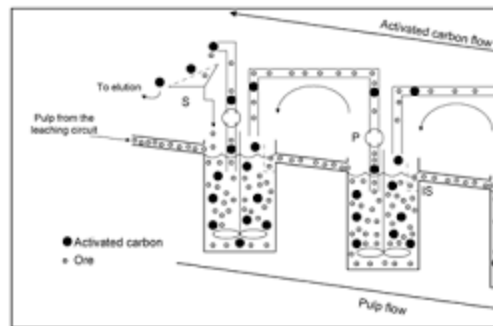


Figure 1: Schematic diagram of a carbon-in-pulp or carbon-in-leach | interstate screens (IS), the screen at the exit of the first tank (S), an

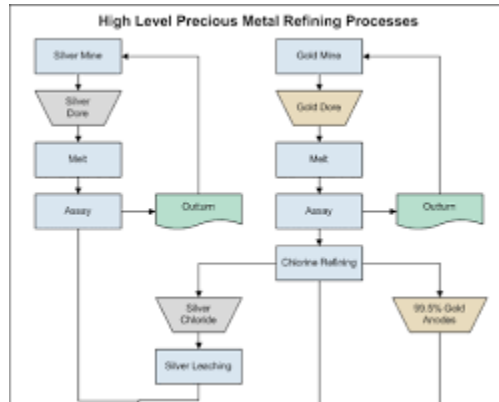
Leaching step in CIL plant gold processing mechanism

The ground ore is mixed with a cyanide solution in a series of leach tanks. The cyanide dissolves the gold particles, forming a gold cyanide complex. The cyanide concentration and pH of the leach solution are carefully controlled to optimize the leaching process.

The CIL plant gold processing mechanism is a complex process, but it is very efficient and can be used to extract gold from a wide range of ores.

The refinery operations gold processing mechanism step by step with drawings is as follows:

Step 1: Dore melting



Dore melting step in refinery operations gold processing mechanism

The doré bars (a gold-silver alloy) are melted in a furnace at a temperature of around 1064°C (1947°F). This process removes any impurities in the doré bars and produces a molten gold-silver alloy.

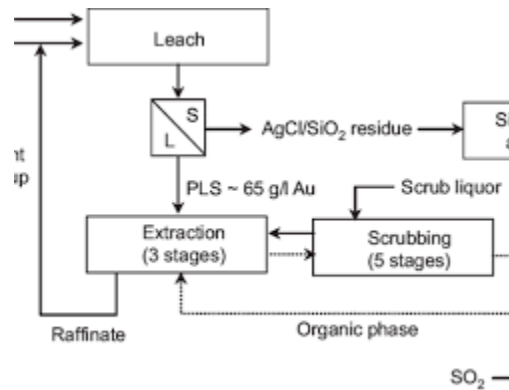
Step 2: Parting



Parting step in refinery operations gold processing mechanism

The molten gold-silver alloy is then transferred to a parting vessel, where the silver is separated from the gold using nitric acid. The nitric acid dissolves the silver, but not the gold. The silver nitrate solution is then drained from the parting vessel, leaving behind the gold.

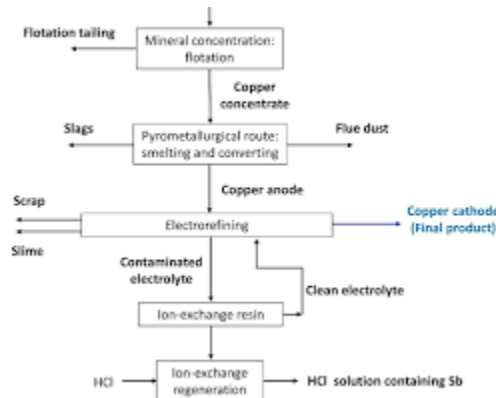
Step 3: Refining



Refining step in refinery operations gold processing mechanism

The gold is then refined to a purity of 99.99% using a process called electro refining. In electro refining, the gold is deposited onto a cathode from an electrolyte solution. The electrolyte solution contains gold ions and other impurities. The impurities are removed from the electrolyte solution during the electro refining process.

Step 4: Casting



Casting step in refinery operations gold processing mechanism

The refined gold is then melted and cast into bars or ingots. The bars or ingots are stamped with the purity of the gold and the refinery's logo.

The refinery operations gold processing mechanism is a complex process, but it is very efficient and produces high-purity gold.

VIII. FINANCIAL PLAN.

START UP COST

Startup Cost Category	Estimated Cost (TZS)
1. Facility and Infrastructure Costs	
- Land Acquisition	50,000,000
- Construction and Renovation	200,000,000
- Mining Equipment	150,000,000
- Safety and Environmental Measures	30,000,000
2. Regulatory and Licensing Costs	
- Permit and License Fees	10,000,000
- Compliance Costs	20,000,000
3. Employee and Labor Costs	
- Salaries and Wages (1 year)	100,000,000
- Hiring and Training	20,000,000
4. Raw Material Costs	
- Purchase of Raw Materials	100,000,000
- Transportation	30,000,000
5. Utilities and Energy Costs	
- Electricity, Water, Fuel (1 year)	50,000,000
6. Technology and Equipment Maintenance	
- Maintenance and Repairs	15,000,000
- Technology and Software	25,000,000
7. Marketing and Sales Costs	

Startup Cost Category	Estimated Cost (TZS)
- Marketing and Promotion	20,000,000
- Sales and Distribution	10,000,000
8. Research and Development	
- R&D Expenses	30,000,000
9. Administrative and Overhead Costs	
- Office Rent and Administrative Expenses	25,000,000
- Legal and Accounting Fees	10,000,000
- Insurance	5,000,000
10. Working Capital	
- Working Capital Reserve	50,000,000
11. Contingency and Reserve Funds	
- Contingency Fund	25,000,000
12. Miscellaneous Costs	
- Miscellaneous Expenses	5,000,000
Total Estimated Startup Costs	680,000,000 TZS
Available Startup Capital	200,000,000 TZS
Funding Gap (Shortfall)	480,000,000 TZS

As shown in the table, the estimated total startup costs amount to 780,000,000 TZS, while the available startup capital is 200,000,000 TZS. This indicates a funding gap (shortfall) of 580,000,000 TZS, which would need to be addressed through additional funding sources such as loans, investors, or other financing options to ensure the successful launch and operation of ELDORADO HOLDINGS TANZANIA LIMITED .

REVENUE STREAM.

1.	Gold Sales	Revenue from selling refined gold to refineries or buyers.
2.	Gold Ore Processing Fees	Revenue from processing fees charged to other mining companies.
3.	Refinery Operations	Revenue from refining gold for other mining companies.
4.	Gold Product Sales	Revenue from selling value-added gold products.
5.	Mining Equipment Leasing	Revenue from leasing mining equipment to other entities.
6.	Consulting and Expertise Fees	Revenue from advisory services for gold processing.
7.	Technology Licensing	Revenue from licensing proprietary processing technology.
8.	Joint Ventures and Partnerships	Revenue from collaborative mining or processing projects.
9.	Royalties from Mining Ventures	Revenue from royalties on mining rights.
10.	Exporting Gold Internationally	Revenue from international gold exports.
11.	Investment Income	Revenue from interest, investments, or securities.

Year 1 (Monthly/Quarterly) - Income Statement

Monthly figures:

Month	Revenue (TZS)	Cost of Goods Sold (COGS) (TZS)	Gross Profit (TZS)	Operating Expenses (TZS)	Net Profit/Loss (TZS)
January	10,000,000	7,000,000	3,000,000	2,000,000	1,000,000
February	12,000,000	8,000,000	4,000,000	2,200,000	1,800,000
March	14,000,000	9,000,000	5,000,000	2,500,000	2,500,000
...
December	16,000,000	10,000,000	6,000,000	3,000,000	3,000,000
Quarter 1	36,000,000	24,000,000	12,000,000	6,700,000	5,300,000
Quarter 2	40,000,000	26,000,000	14,000,000	7,200,000	6,800,000
Quarter 3	45,000,000	28,000,000	17,000,000	7,800,000	9,200,000
Quarter 4	48,000,000	30,000,000	18,000,000	8,000,000	10,000,000
Year 1 Total	169,000,000	108,000,000	61,000,000	29,700,000	31,300,000

Years 2 to 5 (Annually) - Income Statement

Year	Revenue (TZS)	Cost of Goods Sold (COGS) (TZS)	Gross Profit (TZS)	Operating Expenses (TZS)	Net Profit/Loss (TZS)
Year 2	500,000,000	300,000,000	200,000,000	100,000,000	100,000,000
Year 3	700,000,000	420,000,000	280,000,000	140,000,000	140,000,000
Year 4	1,000,000,000	600,000,000	400,000,000	200,000,000	200,000,000
Year 5	2,000,000,000	1,200,000,000	800,000,000	400,000,000	400,000,000

These estimates reflect the startup capital in Year 1 and the target revenue of 2 billion TZS in Year 5.

Year 1 - Balance Sheet

Assets	Year 1 (TZS)
Current Assets	130,000,000
Non-Current Assets	600,000,000
Total Assets	730,000,000
Liabilities	Year 1 (TZS)
Current Liabilities	90,000,000
Non-Current Liabilities	280,000,000
Total Liabilities	370,000,000
Shareholders' Equity	Year 1 (TZS)
- Common Stock	50,000,000
- Retained Earnings	310,000,000
Total Shareholders' Equity	360,000,000

Year 5 - Balance Sheet (Target)

Assets	Year 5 (TZS)
Current Assets	900,000,000
Non-Current Assets	1,700,000,000
Total Assets	2,600,000,000
Liabilities	Year 5 (TZS)
Current Liabilities	700,000,000
Non-Current Liabilities	1,200,000,000
Total Liabilities	1,900,000,000

Shareholders' Equity	Year 5 (TZS)
- Common Stock	50,000,000
- Retained Earnings	650,000,000
Total Shareholders' Equity	700,000,000

These simplified balance sheets provide a concise overview of your financial position for Year 1 and Year 5 without the "(Estimate)" notation.

Years 1 to 5 - Cash Flow Statement (Annually)

Cash Flow Categories	Year 1 (TZS)	Year 2 (TZS)	Year 3 (TZS)	Year 4 (TZS)
Operating Activities	500,000,000	600,000,000	700,000,000	800,000,000
Investing Activities	-300,000,000	-400,000,000	-500,000,000	-600,000,000
Financing Activities	100,000,000	200,000,000	300,000,000	400,000,000
Net Cash Flow	300,000,000	400,000,000	500,000,000	600,000,000

These numbers represent the cash flows for Years 2 to 5, where positive numbers indicate cash inflows, and negative numbers indicate cash outflows. Please replace these figures with your specific financial projections to create a customized cash flow statement for your business.

Financial Assumptions

- Revenue growth: 10% annually
- Operating expenses: 50,000,000 TZS monthly
- Cost of Goods Sold (COGS) as a percentage of revenue: 40%
- Initial capital: 300,000,000 TZS

Break-Even Analysis

Break-even point: Achieved in Year 2

Financial Projections Summary

- Total Revenue (Year 5): 2,000,000,000 TZS
- Net Profit Margin (Year 5): 30%
- Cash Flow at Year 5: 600,000,000 TZS
- Total Assets (Year 5): 2,600,000,000 TZS

IX. SUSTAINABILITY AND GROWTH

In this section, we will discuss our strategies for ensuring the sustainability and growth of ELDORADO HOLDINGS TANZANIA LIMITED . We recognize that achieving long-term success is contingent on several key factors:

A. Market Expansion:

- a. We plan to expand our market presence regionally and internationally, tapping into new markets with untapped potential for gold processing.
- b. Conduct market research and identify opportunities for growth in other precious metals or minerals.

B. Diversification:

- a. Explore opportunities for diversifying our operations beyond gold processing to reduce risk and enhance revenue streams.
- b. Invest in research and development to identify new processes or technologies that align with our core competencies.

C. Sustainable Practices:

- a. Implement environmentally responsible practices in our mining and processing operations, ensuring compliance with local and international environmental regulations.
- b. Embrace sustainable and ethical mining practices that promote responsible resource management.

D. Innovation:

- a. Foster a culture of innovation within the organization, encouraging employees to contribute ideas and solutions that drive efficiency and competitiveness.
- b. Stay updated with technological advancements in the mining and processing industry to maintain a competitive edge.

E. Partnerships and Alliances:

- a. Forge strategic partnerships with suppliers, distributors, and other stakeholders to enhance our supply chain efficiency.
- b. Collaborate with research institutions, universities, and industry peers to stay at the forefront of technological advancements.

F. Employee Development:

- a. Invest in training and development programs to empower our workforce with the skills and knowledge required to excel in their roles.
- b. Foster a positive work culture that encourages employee retention and attracts top talent.

G. Financial Resilience:

- a. Maintain a healthy financial position with sufficient reserves to weather economic downturns or unforeseen challenges.
- b. Diversify our sources of funding to ensure financial stability.

H. Monitoring and Evaluation:

- a. Implement key performance indicators (KPIs) to monitor the progress of our sustainability and growth strategies.
- b. Regularly review and adjust our strategies based on market dynamics and emerging opportunities.

I. Community Engagement:

- a. Build strong relationships with the local communities where we operate, contributing to their well-being and sustainable development.
- b. Uphold corporate social responsibility (CSR) initiatives that benefit the community and enhance our brand reputation.

By addressing these aspects of sustainability and growth, ELDORADO HOLDINGS TANZANIA LIMITED aims to secure its position as a leading player in the gold processing industry while ensuring long-term viability and positive contributions to society and the environment.

X. RISKS AND CHALLENGES

At ELDORADO HOLDINGS TANZANIA LIMITED , we recognize that every business venture involves risks and challenges. It's our commitment to proactively address and mitigate these potential issues:

A. Market Volatility:

- The gold industry is subject to price fluctuations due to economic, geopolitical, and market factors.
- Mitigation: Maintain financial resilience to withstand market volatility. Diversify into other precious metals.

B. Regulatory Compliance:

- Stricter environmental and mining regulations may impact operations.
- Mitigation: Stay updated on regulations, invest in compliance, and uphold ethical practices.

C. Technological Obsolescence:

- Failure to adopt advanced technologies may affect competitiveness.
- Mitigation: Invest in research and development, foster innovation within the organization.

D. Supply Chain Disruptions:

- Disruptions in the supply chain can disrupt production.
- Mitigation: Forge strong relationships with suppliers, diversify sources, and have contingency plans.

E. Economic Downturns:

- Economic recessions can affect demand and financial stability.
- Mitigation: Maintain financial reserves and implement cost-saving measures.

F. Competition:

- Intense competition within the industry may impact market share.
- Mitigation: Focus on differentiation, quality, and customer relationships.

G. Environmental Impact:

- Negative environmental impacts can harm reputation and invite legal action.

- Mitigation: Implement sustainable mining and processing practices, prioritize CSR initiatives.

H. Workforce Challenges:

- Attracting and retaining skilled employees may be challenging.
- Mitigation: Invest in employee development, offer competitive compensation, and maintain a positive work culture.

I. Geopolitical Risks:

- Political instability in regions of operation may affect operations.
- Mitigation: Diversify geographic locations and stay informed about geopolitical developments.

J. Health and Safety:

- Occupational hazards pose risks to employee well-being and regulatory compliance.
- Mitigation: Prioritize health and safety protocols, provide training, and ensure compliance.

By identifying these risks and challenges and implementing proactive mitigation strategies, ELDORADO HOLDINGS TANZANIA LIMITED is prepared to navigate potential obstacles and maintain its commitment to long-term success.