

**PROJECT STATUS REPORT ON PRODUCTION OF
CONSTRUCTION AGGREGATES AT CHINANGALI II IN
CHAMWINO DISTRICT**



**PREPARED BY
SYLVESTER ABEL KWIYEGA-PROJECT MANAGER**

JUNE 2024

PROJECT STATUS SUMMARY

BRIEF COMPANY PROFILE AND BUSINESS PROPOSITION

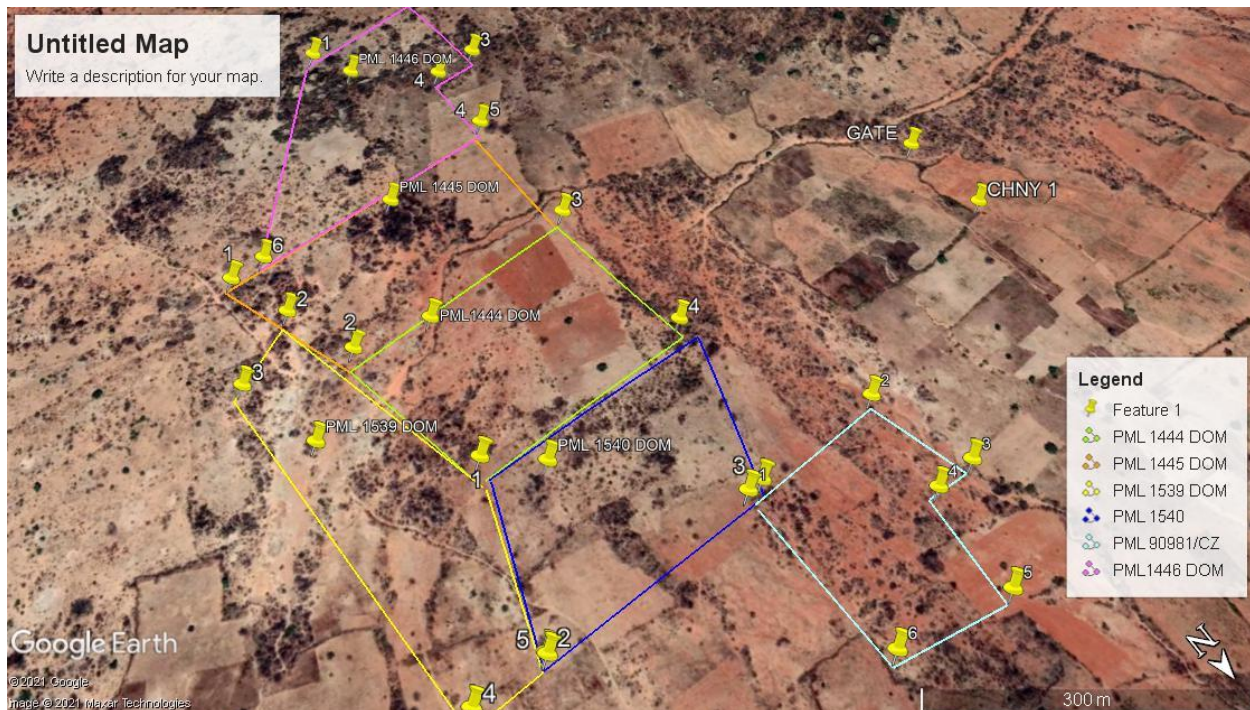
Brandmark Infrastructure Limited is a private company registered in the United Republic of Tanzania as per section 15 of the Companies Act of 2002 administered under Business Registration and Licensing Agency (BRELA). The company has been issued with BRELA's Certificate of Incorporation No. **139167066**, effective from **15th day of May 2019**.

According to our Business Plan, Brandmark Infrastructure Limited entered in production of construction aggregates as a long-term investment project with more than **US\$ 1.9 million** as a total investment with expectation to implement the project into two phases in the area of **about 24.42 Hectares equivalent to 60.34313 acres of land** at **Chinangali II, Chamwino District in Dodoma region**. The company has secured five (5) Primary Mining License both of them are active and annual rents have been paid accordingly. This include the license with registration number PML NO. 1444DOM, PML NO. 1445DOM, PML NO. 1446DOM, PML NO. 1539DOM, and PML NO. 1540DOM whereby total earmarked area for the project was expected to be used.

ACTIVITIES PERFORMED DURING THE PERIOD

- ❖ Brandmark Infrastructure Limited has already obtained five(5) licenses(**Attached**) for the stone quarry. The earmarked 24.42Ha of land is surrounded by stone material, gravel and some parts are of shrubs ready for extraction once everything else is in place in terms of government licenses and permits, machinery and deployment of human capital. As per detailed estimation the geological reserve is about 300 million MT and the annual production is estimated to be 1.2 million MT. Measures for reclamation will be applied whereby at the end of life of the mine about 3,600 trees will be grown in the whole area

- ❖ We have conducted the environmental protection plan as required by the National Environment Management Council (NEMC) and submitted to the Regional Manager, Regional Mines Officer Dodoma and copies circulated to District Council Chamwino.
- ❖ The company has introduced itself to the local community and the local government as being among stakeholders of the development in Chamwino. We have participated in construction of Mizengo Pinda Primary School buildings by offering roofing materials that is 108 corrugated iron sheets on 8th February 2021. As Key stakeholders to the government we expect to participate in various social and economic activities for the betterment of the society and country at large.
- ❖ Payment of rent. We have managed to pay annual rent as one of the component to possess the license. Since 2021 to date , the company has paid about Tshs. 5,000,000 (Tanzania Shillings Five Million).
- ❖ The company has created various employment opportunities to skilled, semi skilling and non skilled labourers. For example, experts have been employed in areas of consultancy, research and general operations of the project to ensure sustainability of the project. However, semi-skilled and non skill assist in daily function when need to perform specific tasks.
- ❖ Identification and payment of compensation to persons affected Project(PAPs). Total of 14 PAPs were identified and paid to allow them to vacate the mining site **(List attached Table 1)**
- ❖ Identifying and marking boundaries. Both License have marked with special mark to the field called beacons as granted by mines office in Dodoma as shown on the aerial photograph below:



Aerial photograph showing boundaries of the licenses granted

PROBLEMS ENCOUNTERED AND CORRECTIVE ACTIONS

In Tanzania like most African Countries it was hit by the Corona Virus Pandemic in Mid-March 2020. The pandemic has a negative impacts in the economy globally and indeed in the East African Community, including Tanzania. This led to companies laying off employees, some companies shutting down (i.e. tourism, hospitality and transport & logistics sectors), increased burden on the health and social security sectors and the social burden of families having to take care of and/or support sick and unemployed family members. The World Bank estimates a real GDP growth rate of 4.3 percent and a GDP per capita growth rate of 1.3 percent in 2021, following a 1.0 percent per capita GDP contraction in 2020.' The World Bank 2022.

This also affected our plan because of the following challenges: Decline of business due to closure of borders including the manufacturing sector that requires movement of people, Slowdown of movement of goods and people due

to lockdown of counties as result of the pandemic, Delay of export of produce such as horticulture produce due to lockdown in destination countries and the nature of the produce.

PLANNED ACTIVITIES FOR NEXT PERIOD

The aforementioned reasons affected Brandmark Infrastructure limited to implement its plan and it is currently recovered and ready to revamp its business plan. Through the government support set policies we are going to cooperate and use investment incentives introduced by the government to ensure the project is excelling and attain its goals. The project schedule is 90% behind due to impacts of COVID-19 and government policy changes introduced to overcome the pandemic.

We are planning to import sophisticated quarry plant and machinery and install them at the mining site, employ technical team and comply to government laws governing mining and trading. The picture of the kind of business we are intending to build and the goal we want to achieve is what informed the amount we are ready to spend to ensure that we build a business with dedicated workforce and robust distribution network.

UPDATED MILESTONE COMPLETION FORECAST

- ❖ The Company Plan To Import The Key Plant And Machinery For Production. This Shall Be Completed In Two Phase For The Period Of Two Years
- ❖ The Company Has Review Its Previous Swot Analysis, Market Analysis And Financial Analysis To Reflect The Current Economic Status Globally
- ❖ Use The Government And Financial Institutions Investment Incentives To Achieve Best Investment Return.

CONCLUSION

Our business goal is to be one of the best choice to civil construction companies in Tanzania specifically in Dodoma and the surrounding regions where we intend to supply construction materials (gravels, aggregates and stones) to different government projects around Dodoma region. These include the SGR, roads, buildings, etc. On the other hand, the project will also supply gavels, aggregates and stones of different sizes as to private building contractors as per their specifications. Brandmark Infrastructure Limited is set to redefine how quality production of construction aggregates business should be run, not just in Dodoma but also in the whole of the Tanzania. This is why we have put plans in place for continuous training of all our staff on regular intervals. Through this we will at all-time demonstrate commitment to sustainability, both individually and as a company, by actively participating in our communities and integrating sustainable business practices whenever possible.

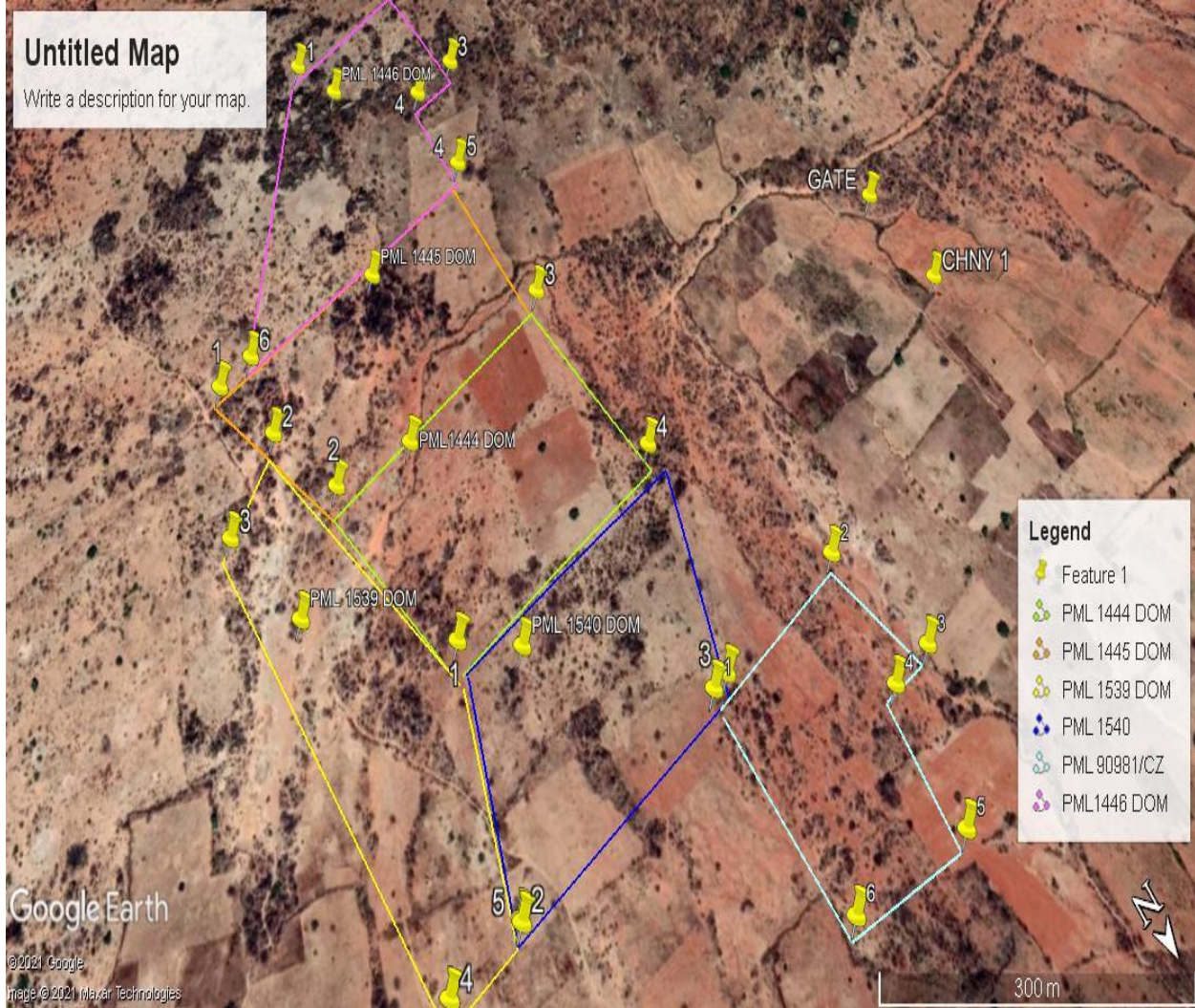


APPENDICES

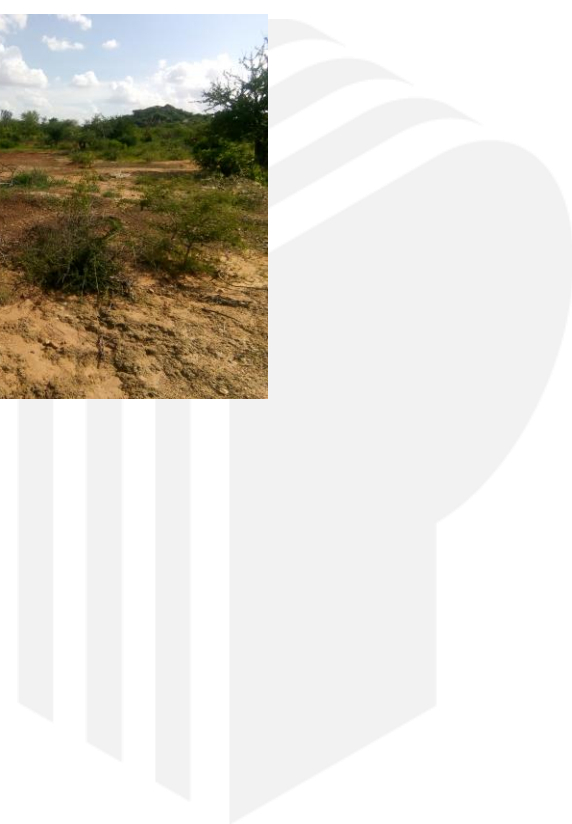
APPENDIX I: Brandmark Infrastructure Limited Mining License



APPENDIX II: Aerial Photograph of License Boundaries



APPENDIX III: Some of selected photos of the site and Corporate Social Responsibility works at Mizengo Pinda Primary school





APPENDIX IV: LISTS OF PAPS

TABLE 1: LIST OF PAPS IDENTIFIED IN THE PROJECT AREA

S/N	NAME	LAND SIZE
1	YONA WILLIAM MAKASI	0.44
2	MIKA MAKASI	4.78
3	MSAFIRI WILLIAM MAKASI	3.62
4	JONAS CHISOMEKO	6.9
5	MSONGA MAKASI	2.4
6	KENETH CHISOMEKO	0.31
7	SIMON MAZENGO	0.45
8	JOHN CHAWALA	4.1
9	ELIAS NYAWAJE CHAWALA	1.7
10	TITO MAKASI	2
11	REUBEN MSANGA	2
12	MSAFIRI CHAWALA	2.1
13	JOHN TANASIO MAKASI/JOHN WILLIAM MAKASI (MGOGORO)	0.44
14	NDALU MZANGWA KNY SIMON NDALU MZANGWA	1.5

