

UPENDO GROUP LIMITED

MINING PROJECT PROPOSAL

Contents

Executive Summary 5

SECTION ONE 6

BUSINESS PROFILE 6

 Business Description..... 6

 Vision Statement..... 6

 Mission Statement..... 6

 Core Values..... 7

SECTION TWO..... 8

SERVICES..... 8

 Introduction..... 8

 Coal Mining Expertise 8

 Comprehensive Coal Mining Services..... 9

 Upendo Group's Commitment to Excellence..... 10

SECTION THREE..... 11

INDUSTRY ANALYSIS..... 11

 Introduction..... 11

 Market Trends..... 11

 Key Factors Influencing Supply and Demand 12

 Strategic Implications 12

 Key strategic goals for Upendo Group include: 12

 Strategic Vision for Upendo Group in the Coal Mining Sector..... 13

SECTION FOUR 14

BUSINESS OPERATIONS..... 14

 Head Office..... 14

 Coal Mining Operations..... 14

 Service Offerings 15

 At the core of our operations are: 15

 Sustainability and Innovation 15

 Project Management Excellence..... 15

 Client-Centric Approach..... 15

 Safety and Security 16

Technology Integration.....	16
Environmental Responsibility.....	16
Vision and Commitment.....	16
Managing Director.....	17
Head of Finance and Administration.....	18
Head of Operations.....	19
SECTION FIVE.....	21
COMPETITIVE ANALYSIS.....	21
Introduction.....	21
Competition in the Coal Mining Industry.....	21
Competition in the coal mining sector is defined by several critical factors.....	21
Key Factors Defining Competition in Coal Mining.....	22
SWOT Analysis for UPENDO GROUP– Coal Mining Project.....	22
Strengths.....	22
Weaknesses.....	23
Opportunities.....	23
Threats.....	23
SECTION SIX.....	24
FINANCIAL OUTLOOK FOR COAL MINING PROJECT.....	24
Assumptions.....	24
Projected Expenses.....	25
Operation Expenses.....	26
The following table 6.2 shows the operation Expenses for 2025-2027.....	26
Projected Profit and Loss.....	28
Projected Balance Sheet.....	28
Projected Cash Flow.....	29
SECTION SEVEN.....	31
BUSINESS EXPANSION: LONG-RANGE GOALS FOR COAL MINING PROJECT.....	31

Executive Summary

Upendo Group Company Limited stands as a dynamic leader in Tanzania's coal mining industry, committed to meeting the evolving demands of this vital sector. Registered under number 28722, the company operates strategically from its base in the Muze area within Sumbawanga Urban District, Rukwa Region, specializing in coal exploration, mining, and project development. Under the leadership of experienced shareholders Cassiano Lucas Kaegele and Liberatus Kaegele, Upendo Group combines industry expertise with a strategic vision, driving its commitment to excellence in mining operations.

Operational efficiency is a cornerstone of Upendo Group's mission, and its location in Muze area offers significant logistical advantages. Situated in proximity to key coal mining routes and infrastructure, the company's operations are designed for smooth access to critical transportation networks, optimizing mining and distribution processes. With a clear vision for growth, Upendo Group plans to expand regionally to leverage emerging opportunities and strengthen its industry position.

The company's long-term objectives include market expansion, regional dominance, service diversification, technological advancement, sustainability, and strategic partnerships. Emphasizing eco-friendly practices, Upendo Group aims to align its operations with the highest environmental standards while also focusing on building a strong workforce, maintaining financial sustainability, and enhancing adaptability to evolving industry trends. Additionally, the company is dedicated to a comprehensive Corporate Social Responsibility (CSR) program that benefits local communities, ensuring the company operates with a positive social and environmental impact.

Upendo Group's growth strategy involves diversifying its service offerings by exploring new coal mining technologies, expanding into new markets, and implementing sustainable mining practices. The company plans to establish strategic partnerships with key stakeholders to enhance its industry presence while maintaining a customer-centric approach to attract new clients and foster long-term loyalty.

Employee development is central to Upendo Group's success, ensuring a skilled workforce capable of driving the company's growth. Financial sustainability remains a key priority, with a strong emphasis on sound financial management, cost control, and profitability. The company continues to embrace industry innovations and stay ahead of market trends to remain agile in the competitive coal mining sector. Furthermore, Upendo Group's commitment to CSR underscores its responsibility to the local communities and the environment, reinforcing the company's role as a socially conscious industry leader.

SECTION ONE

BUSINESS PROFILE

Business Description

UPENDO GROUP COMPANY LIMITED is a duly registered limited company in Tanzania under the registration number 28722. Our core mission is to offer comprehensive coal mining and project development services, not only within Tanzania but also to neighboring countries. Located in the vibrant district of Sumbawanga Urban District in Rukwa, our operational base is specifically situated in Muze. This strategic location places us at the heart of key coal mining areas, allowing us to efficiently manage logistical needs within the mining sector and facilitate seamless connections to other regions.

The company is owned by two shareholders, Cassiano Lucas Kaegele and Liberatus Kaegele, with the following share distribution:

Name	Share	Residency
Cassiano Lucas Kaegele	90%	Tanzanian
Liberatus Kaegele	10%	Tanzanian

Upendo Group Company Limited was established in response to the growing demand for reliable and sustainable coal mining solutions in Tanzania. After analyzing the market dynamics and the increasing need for efficient energy and mineral resources, the founders saw an opportunity to build a business capable of addressing both immediate and long-term needs in the coal mining industry. With a deep understanding of the sector, the founders envisioned Upendo Group as a key player in the industry, focused on promoting responsible mining practices while contributing to the economic development of Tanzania and its neighboring countries. The commitment to excellence, environmental sustainability, and customer satisfaction are the key pillars of Upendo Group's operations, positioning it as a reliable and innovative partner in the coal mining industry.

Vision Statement

Our vision is to be the premier and most trusted coal mining partner in Tanzania and surrounding regions, fostering sustainable development and contributing to the energy needs of our communities and industries. We aim to lead the industry with innovation, environmental responsibility, and operational excellence.

Mission Statement

Our mission is to deliver exceptional coal mining and project development services that exceed the expectations of our clients and stakeholders. We strive to promote economic growth, energy security, and responsible mining practices in the regions we serve. Through innovation, sustainable operations, and a commitment to safety, we aim to be the preferred choice in the coal mining sector.

Core Values

- **Reliability:** We are dedicated to providing dependable coal mining solutions, ensuring timely and safe extraction and delivery of coal while maintaining high operational standards.
- **Integrity:** We conduct our business with the highest ethical standards, fostering trust and transparency in all relationships and operations.
- **Customer-Centric:** Our customers are at the core of everything we do. We continually work to understand and meet their needs, delivering exceptional service and value.
- **Innovation:** We embrace innovation as a key driver, seeking new and improved technologies and methods to enhance our mining processes and contribute positively to the sector.
- **Safety:** The safety of our employees, clients, and surrounding communities is paramount. We adhere to the highest safety standards and implement rigorous safety protocols across all operations.
- **Environmental Responsibility:** We are committed to minimizing our environmental impact by adopting sustainable mining practices and embracing eco-friendly technologies to ensure responsible resource extraction.
- **Collaboration:** We believe in the power of collaboration, working closely with our clients, partners, and local communities to achieve shared success and sustainable growth.
- **Employee Empowerment:** We value our employees and invest in their growth through continuous training, development, and a supportive work environment that fosters inclusivity and opportunity.

By adhering to these values, Upendo Group aims to transform the coal mining landscape in Tanzania, fostering economic development while being mindful of the environmental and social impact of our operations

SECTION TWO

SERVICES

Introduction

Upendo Group Company Limited specializes in delivering comprehensive coal mining solutions across exploration, extraction, and project development. Our company is committed to excellence, with a strong focus on meeting and exceeding the unique needs of our clients in the mining industry. Through innovative mining techniques, meticulous planning, and sustainable practices, Upendo Group ensures that every mining project not only maximizes resource extraction but also enhances the overall efficiency and environmental stewardship of our operations.

Our coal mining services are designed to create safe, efficient, and high-quality mining solutions that meet the diverse needs of the energy and industrial sectors. From exploring new mining sites to the extraction of high-quality coal, Upendo Group provides versatile solutions tailored to market demands. Emphasizing safety, sustainability, and efficiency, our experienced team ensures that every project adheres to the highest standards from start to finish.

For industrial and large-scale mining projects, Upendo Group takes pride in designing operations that seamlessly integrate functionality and innovation. These operations are equipped to cater to a wide range of mining activities, supporting both coal extraction and the associated infrastructure that drives economic growth.

Our commitment to customer satisfaction remains unwavering. Whether conducting exploration activities, expanding mining operations, or managing extraction and delivery, we prioritize quality, safety, and reliability. By leveraging advanced mining technologies, optimizing processes for energy efficiency, and adhering to strict environmental and safety standards, Upendo Group ensures that every mining project reflects our dedication to excellence and long-term value creation.

Through a customer-centric approach, sustainable practices, and innovative solutions, Upendo Group is reshaping Tanzania's coal mining landscape, delivering projects that inspire trust and contribute to the nation's energy security and economic growth.

Coal Mining Expertise

At Upendo Group, our focus on coal mining plays a pivotal role in transforming natural resources into sustainable energy solutions. This approach to mining reflects our commitment to meeting diverse market needs with tailored extraction methods. Our expertise spans across various coal mining projects, ensuring that we deliver value through innovative techniques, strategic planning, and operational excellence.

Our capabilities include the exploration, extraction, and transportation of coal, tailored to meet the requirements of power generation, industrial use, and other related sectors. Whether it's large-

scale open-pit mining, underground mining, or the development of supporting infrastructure, we leverage our extensive experience and resources to create mining operations that align with market trends and client needs.

With a strong local and regional presence, we are well-positioned to execute projects in prime coal-rich areas, ensuring accessibility and convenience for end users. Our strategic approach integrates sustainable practices and modern technology to ensure efficient project execution and long-term benefits for stakeholders.

A hallmark of our services is our attention to detail and customer-focused operations. Our skilled teams oversee every aspect of the mining process, from site exploration and design to extraction and transportation, ensuring that every project is completed on time and to the highest standards.

Through our expertise in coal mining, we aim to contribute significantly to energy production while delivering high-quality, sustainable coal that meets the evolving needs of power generation and industrial sectors.

Comprehensive Coal Mining Services

Upendo Group offers end-to-end coal mining services, ensuring that every phase of the project is managed efficiently. From initial exploration and feasibility studies to extraction and transportation, we provide a full spectrum of mining solutions. Our adaptability ensures the creation of efficient mining operations that cater to the needs of our clients, including power plants, manufacturing industries, and local communities. We pride ourselves on delivering projects on schedule, reflecting the reliability and precision of our approach to coal mining.

A significant advantage of our coal mining services is the comprehensive nature of our offerings. We manage everything from land acquisition and environmental assessments to mining operation design and project management. By integrating advanced technologies such as automated mining equipment, project management software, and real-time monitoring systems, we enhance efficiency, improve client communication, and ensure seamless management of the entire mining process.

Safety and quality are paramount in our mining operations. We adhere to stringent safety standards, use high-quality equipment, and employ skilled professionals to ensure the safety and structural integrity of our mining sites. Moreover, we ensure all necessary documentation is managed, including permits, environmental assessments, and health and safety compliance. Compliance with regulations and industry standards is a cornerstone of our commitment to delivering legally sound and reliable mining operations.

As sustainability becomes a critical focus in the mining industry, we are committed to adopting environmentally responsible practices. This includes incorporating dust control measures, efficient water usage, waste management systems, and eco-friendly technologies to minimize the environmental impact of our operations. Our mining initiatives are designed to provide sustainable,

functional, and innovative solutions that cater to diverse client needs, solidifying our role as a reliable and forward-thinking partner in the coal mining industry.

Upendo Group's Commitment to Excellence

Upendo Group is at the forefront of delivering reliable and innovative coal mining solutions, establishing a robust presence in key coal-rich regions across Tanzania. Our expansive portfolio of projects addresses the growing demand for energy resources, ensuring a steady supply of coal to power generation plants, industries, and local markets.

In our commitment to providing exceptional coal mining services, Upendo Group focuses on creating well-planned and sustainable mining operations. By incorporating state-of-the-art mining technologies, we ensure that our operations are not only efficient but also environmentally responsible. Our goal is to offer both functionality and long-term value, making us the preferred choice for coal buyers and industry stakeholders.

Efficiency and reliability are cornerstones of Upendo Group's operational philosophy. Our projects adhere to meticulously defined schedules, ensuring timely delivery and instilling confidence in our clients and stakeholders. Whether extracting coal for power generation or industrial use, Upendo Group ensures that each project meets the highest standards of quality, safety, and customer satisfaction.

At Upendo Group, a customer-centric approach is deeply embedded in our operations. Our responsive team works closely with clients to understand their unique requirements, tailoring coal mining solutions to suit their needs. We provide seamless services for coal extraction and transportation, making our solutions accessible, flexible, and convenient.

Safety and sustainability are paramount in our mining practices. Our team follows rigorous safety protocols during mining operations and employs advanced technologies to enhance operational efficiency and structural integrity. Additionally, we prioritize environmental responsibility by incorporating green mining practices, efficient resource utilization, and sustainable land reclamation practices into every project, minimizing environmental impact while maximizing value.

Upendo Group is dedicated to inclusivity and community enrichment in all its mining projects. We actively engage in initiatives that support local communities and contribute to their well-being, reinforcing our commitment to creating not just profitable but also socially responsible mining operations.

With a steadfast dedication to excellence, innovation, and sustainability, Upendo Group is redefining the coal mining landscape in Tanzania, delivering projects that stand as benchmarks for quality, community impact, and energy production.

SECTION THREE

INDUSTRY ANALYSIS

Introduction

The coal mining industry serves as a key driver of economic growth, providing essential resources for energy production, industrial processes, and other sectors. This chapter provides an in-depth analysis of the coal mining industry, exploring its significance, prevailing market trends, and the key factors influencing supply and demand dynamics. For Upendo Group Company Limited, understanding the intricacies of this sector is critical for strategically positioning itself and capitalizing on emerging opportunities.

The coal mining sector plays a foundational role in the global energy landscape and in the industrialization of countries. Coal is essential for power generation and is a significant input in various industries, including steel production and manufacturing. For Upendo Group, entering the coal mining industry provides a chance to tap into the growing demand for energy resources while contributing to Tanzania's industrial and economic growth. Understanding these dynamics is key as the company moves forward with its coal mining operations.

Market Trends

The coal mining industry is influenced by several global and regional trends. These trends shape both the supply side (how coal is extracted and processed) and the demand side (who consumes it and how it is used). Key market trends include:

Global Energy Demand: Coal continues to be a primary source of energy in developing and emerging markets, especially for power generation. Despite global shifts toward renewable energy, the demand for coal remains strong in regions that require reliable and affordable power sources.

Technological Advancements: The adoption of new mining technologies, such as automation, data analytics, and more efficient extraction methods, is increasing. These advancements improve productivity, reduce costs, and ensure safer working conditions.

Environmental Concerns: The growing emphasis on reducing carbon emissions and shifting toward cleaner energy sources poses challenges for coal. However, for countries with abundant coal resources, like Tanzania, there remains a long-term demand for coal as part of the energy mix.

Government Policies and Regulations: Government incentives, such as subsidies for coal extraction and development of related infrastructure, are essential drivers for the mining industry. Policies that promote cleaner coal technologies and mitigate environmental impacts also shape the industry's future.

For Upendo Group, staying ahead of these trends means adopting innovative and environmentally responsible practices that align with market demands while addressing regulatory and environmental challenges.

Key Factors Influencing Supply and Demand

The dynamics of supply and demand in the coal mining industry are influenced by several key factors:

Resource Availability: Proximity to high-quality coal deposits and the feasibility of their extraction. The geographical location and depth of coal reserves directly affect the cost of mining and transportation.

Global and Regional Energy Demand: The demand for coal as an energy source is heavily influenced by the energy needs of power generation plants, particularly in industrializing countries.

Technological Developments: The application of new mining technologies, such as advanced drilling and extraction methods, improves the efficiency of coal mining operations.

Regulatory and Environmental Factors: Stringent environmental regulations and taxes on carbon emissions can impact the cost-effectiveness of coal mining. Companies must also adapt to evolving laws regarding mining practices and sustainability efforts.

Infrastructure Development: Adequate infrastructure, such as roads, railways, and ports, is crucial to transporting coal from mines to power plants or export markets. Investments in infrastructure projects are essential to the continued growth of the mining industry.

Market Prices: Global coal prices are influenced by supply and demand in international markets, as well as competition from other energy sources like natural gas and renewable energy.

Understanding these factors enables Upendo Group to develop a strategic approach for its coal mining operations, ensuring alignment with market conditions and long-term profitability.

Strategic Implications

A deep understanding of the coal mining industry will allow Upendo Group to navigate its challenges and seize growth opportunities. The company's entry into this sector signifies its commitment to contributing to Tanzania's energy production and industrial needs while maintaining high operational standards. By leveraging its knowledge of market trends and influencing factors, Upendo Group can create mining projects that are both profitable and sustainable.

Key strategic goals for Upendo Group include:

Adopting Advanced Mining Technologies: Implementing the latest mining technologies to improve efficiency, reduce environmental impact, and enhance worker safety.

Focusing on Sustainability: By adopting green mining practices, such as dust control, water recycling, and reduced carbon emissions, Upendo Group can differentiate itself from competitors and align with global sustainability goals.

Building Strong Relationships with Stakeholders: This includes working closely with the government, local communities, and investors to ensure the smooth operation of mining projects and compliance with regulations.

Expanding into Export Markets: With abundant reserves and favorable geological conditions, Tanzania has the potential to become a key exporter of coal, and Upendo Group can capitalize on this market opportunity.

Strategic Vision for Upendo Group in the Coal Mining Sector

The coal mining sector is crucial to Tanzania's economic future, driving industrialization, energy production, and job creation. With increasing demand for coal both locally and internationally, Upendo Group aims to become a leading player in the Tanzanian coal mining industry.

Upendo Group recognizes the importance of the coal mining sector to the national economy and is committed to developing innovative, efficient, and environmentally responsible mining projects. The company plans to:

- Focus on high-quality coal deposits with easy access to transport networks, ensuring cost-effective mining operations.

- Adopt sustainable practices, including clean mining technologies, carbon reduction strategies, and land reclamation efforts to mitigate the environmental impacts of mining.

- Explore export opportunities, taking advantage of Tanzania's geographical proximity to key markets in Asia, Europe, and beyond.

- Support local communities through job creation, capacity building, and infrastructural improvements, ensuring that mining activities contribute to broader economic development.

By maintaining a strong focus on sustainability, operational excellence, and strategic growth, Upendo Group is well-positioned to capitalize on the emerging opportunities in the coal mining industry. Through thoughtful planning and execution, the company aims to contribute to Tanzania's energy security and industrial growth while delivering value to its stakeholders and supporting sustainable development goals.

SECTION FOUR

BUSINESS OPERATIONS

Head Office

The operational hub for our coal mining activities is strategically based at the Head Office, located at Plot No. 2 Block “Z” in the Muze area, Sumbawanga Urban District, Rukwa Region. This location offers excellent accessibility within a growing region, perfectly positioned to support Upendo Group Company Limited's expansion in the coal mining sector. The postal code for this address is 55101, and all official correspondence should be directed to P. O. Box 336, Dar es Salaam.

The Head Office serves as the central point for overseeing and facilitating all aspects of our mining operations. This facility is designed to ensure operational efficiency, housing dedicated spaces for administrative functions, operational teams, and a command center that monitors ongoing and future coal mining projects. The building’s design facilitates seamless coordination between departments, supporting both the strategic planning and execution of our mining operations.

Underpinned by advanced IT infrastructure, the Head Office allows for real-time data analysis, reporting, and communication between departments. This system enables the monitoring of key performance metrics, such as production rates, safety compliance, and financial performance, allowing us to proactively address opportunities or challenges as they arise. Our choice of location was driven by its proximity to key coal deposits, essential transportation networks, and logistical routes that enhance operational efficiency.

As the nerve center for Upendo Group’s mining operations, the Head Office is not just an administrative hub but a strategic facility that embodies our commitment to transparency, technological innovation, and operational excellence in the coal mining industry.

Coal Mining Operations

Upendo Group Company Limited is a forward-thinking force in Tanzania's coal mining sector, committed to meeting the country’s growing energy demands and supporting industrial development. Our mining operations focus on delivering high-quality, sustainable coal resources that drive the nation’s energy needs and contribute to economic growth.

Service Offerings

At the core of our operations are:

Coal Extraction and Production: We specialize in the extraction and production of high-quality coal for power generation, industrial use, and export markets.

Energy Solutions: In addition to coal extraction, we are exploring opportunities to provide integrated energy solutions, including coal-fired power generation to support local industries and communities.

Infrastructure Development: We invest in the development of infrastructure such as transport routes, storage facilities, and power plants, ensuring the efficient movement of coal from the mining sites to the end-users.

Comprehensive Project Network

Our coal mining sites are strategically located near major transport corridors and key markets, ensuring easy access to regional and international markets. These locations are chosen for their high-quality coal reserves and proximity to vital infrastructure, enabling cost-effective extraction and transportation, ultimately maximizing returns for stakeholders.

Sustainability and Innovation

Sustainability is a cornerstone of our coal mining operations. While coal remains a critical energy resource, we are committed to minimizing our environmental impact through responsible mining practices. This includes efforts to reduce emissions, improve energy efficiency in coal extraction, and incorporate advanced technologies to optimize production processes. We are actively exploring innovations such as cleaner coal technologies and carbon capture initiatives to align with global energy transitions while continuing to meet local energy needs.

Project Management Excellence

We employ rigorous project management practices to ensure the efficient operation of our coal mining projects. Utilizing advanced tools and software for project tracking, budgeting, and resource allocation, we maintain strict control over timelines, costs, and safety standards. Our teams are equipped with the necessary skills and expertise to meet project goals efficiently and within regulatory frameworks.

Client-Centric Approach

At Upendo Group, our operations are driven by a commitment to customer satisfaction. We engage closely with energy providers, industrial customers, and other stakeholders to ensure our coal meets their specific requirements. Transparent communication, reliable supply, and flexible delivery options enhance the value of our coal mining services and build trust with our partners.

Safety and Security

Safety is a top priority at Upendo Group, with robust safety protocols in place to protect our workers, contractors, and local communities. We employ experienced professionals to oversee safety measures at every stage of mining operations, from excavation to transportation. Additionally, we implement security systems to ensure the protection of our mining sites and prevent unauthorized access.

Technology Integration

Technology is a key enabler of our mining operations. We integrate cutting-edge technology in areas such as automated mining equipment, real-time data tracking for production, and advanced environmental monitoring systems. These tools improve efficiency, reduce environmental impact, and enhance safety, driving greater productivity and ensuring responsible resource management.

Environmental Responsibility

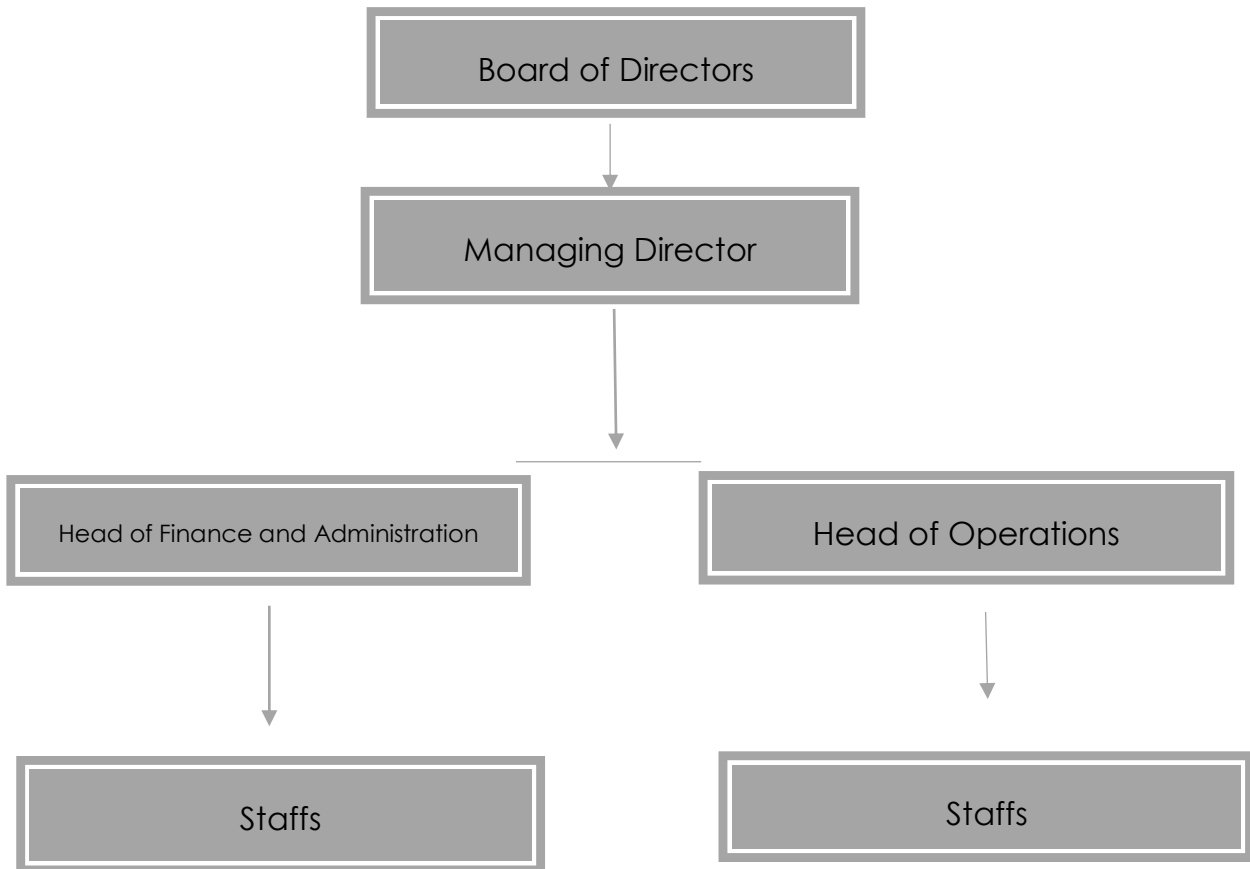
We are committed to implementing environmentally responsible practices throughout our coal mining operations. These efforts include minimizing environmental disruption, managing waste effectively, and ensuring sustainable land reclamation practices post-extraction. Our goal is to balance the economic benefits of coal mining with the need to protect and preserve the surrounding environment for future generations.

Vision and Commitment

With our headquarters as the central hub, Upendo Group envisions becoming a leader in Tanzania's coal mining industry. By embracing innovation, maintaining a strong focus on sustainability, and prioritizing safety and efficiency, we aim to deliver valuable coal resources that fuel the country's industrial growth while contributing to its energy security. We are committed to creating lasting value for our stakeholders, supporting the local communities, and driving Tanzania's economic development. Through strategic operations, cutting-edge technology, and a customer-first approach, Upendo Group is poised to make a significant impact in the coal mining sector.

Organization Structure

The following include the structure which show the position of employees of Upendo Group



Managing Director

The Managing Director will have the following roles within the organization:

1. **Coordinating Activities:** Overseeing and coordinating all activities across multiple mining sites and coal extraction projects to ensure operational efficiency and alignment with strategic goals.
2. **External Representation:** Representing the business in external affairs, including relations with stakeholders, government agencies, and regulatory bodies, to secure the necessary permits, support, and compliance for the mining operations.

3. **Report Review:** Reviewing and analyzing reports submitted by department heads such as Finance and Operations to ensure the projects are progressing as planned and within budget.
4. **Financial Oversight:** Serving as a signatory for all business bank accounts and financial transactions related to coal mining projects, ensuring proper financial control and accountability.
5. **Expenditure Authorization:** Approving expenditures related to mining operations, project development, equipment procurement, and other organizational needs, ensuring cost-effectiveness and budget adherence.
6. **Resource Management:** Managing and allocating the organization's resources effectively, including human resources, equipment, and raw materials, to maximize productivity in mining operations.
7. **Policy Development:** Developing and overseeing policies designed to improve the efficiency of mining operations, ensure environmental sustainability, and maintain competitiveness in the coal mining industry.
8. **Securing Financial Assistance:** Identifying and securing financial assistance or investment opportunities as needed for the expansion or enhancement of coal mining operations.

Head of Finance and Administration

The Head of Finance and Administration will perform the following roles:

1. **Budget Management:** Preparing and managing budgets for coal mining projects and overall organizational operations, ensuring proper financial allocation for exploration, extraction, and processing activities.
2. **Financial Control:** Exercising financial control to ensure that mining operations are carried out cost-effectively, minimizing wastage and optimizing profitability.
3. **Policy Implementation:** Developing and implementing financial and administrative policies that ensure smooth operations, adherence to accounting standards, and regulatory compliance in the coal mining industry.
4. **Resource Allocation:** Overseeing administrative budgets and allocating resources effectively for operations support, human resources, and legal compliance within the mining environment.
5. **Staff Management:** Recruiting, training, and managing administrative staff, ensuring that the team is well-equipped and knowledgeable in mining operations and regulatory requirements.

6. **Contract Negotiation:** Negotiating contracts and agreements with contractors, suppliers, mining equipment providers, and other stakeholders to secure favorable terms for the company.
7. **Investor Relations:** Establishing and maintaining relationships with investors, banks, and other financial institutions to secure funding for coal mining exploration and expansion.
8. **Expense Monitoring:** Monitoring operating expenses related to mining activities, ensuring financial efficiency and profitability of each project phase.
9. **Collaboration:** Collaborating with the Human Resources department and other organizational units to ensure alignment in staffing, compensation, and other support functions tailored to the mining sector.

Head of Operations

The Head of Operations will be responsible for:

1. **Site Management:** Managing coal mining sites, ensuring the maintenance of equipment, machinery, and resources, and optimizing extraction processes to achieve production targets.
2. **Project Scheduling:** Planning and scheduling mining operations, including excavation, transportation, and processing timelines, to ensure projects are delivered on time and meet production quotas.
3. **Logistics Coordination:** Coordinating logistics for sourcing raw materials, deploying workforce, and managing site operations to ensure efficient coal extraction and delivery to processing plants.
4. **Regulatory Compliance:** Ensuring compliance with mining industry regulations, environmental standards, and safety protocols to minimize risks and maintain legal and operational integrity.
5. **Operational Improvements:** Identifying and implementing operational improvements to increase productivity, reduce environmental impact, and enhance safety standards on mining sites.
6. **Client Services:** Overseeing customer service operations, ensuring client satisfaction in the supply of coal, and maintaining strong relationships with stakeholders in the energy and manufacturing industries.
7. **Risk Management:** Identifying operational risks, implementing mitigation strategies, and developing contingency plans to address challenges such as equipment failure, environmental hazards, or regulatory issues.

8. **Technology Integration:** Integrating advanced technology solutions for resource extraction, project management, and performance tracking, optimizing efficiency across mining operations.
9. **Cross-Department Collaboration:** Working with other departments to ensure that operational objectives align with business goals, financial targets, and environmental sustainability standards.
10. **Performance Monitoring:** Monitoring and evaluating mining operations through key performance indicators (KPIs), reporting on progress, and adjusting plans to maintain efficiency and profitability.
11. **Team Leadership:** Leading the operations team, ensuring high productivity and safety, and promoting continuous improvement in mining processes and site management.
12. **Emergency Response:** Developing and implementing emergency response plans to address unforeseen challenges such as accidents, equipment failure, or environmental emergencies at the mining site.

SECTION FIVE

COMPETITIVE ANALYSIS

Introduction

Competition is an inevitable and significant force in the coal mining industry, as in any other sector. In this industry, companies of all sizes—from smaller, independent operators to large multinational corporations—engage in dynamic competition to secure mining concessions, expand production capacity, and cater to both domestic and international demand. The competition in coal mining is shaped by various factors, including resource availability, technological advancements, environmental regulations, and pricing strategies. Smaller companies may focus on niche markets or specialized extraction methods, while larger corporations leverage economies of scale, capital investment, and global networks to secure larger market shares and optimize production processes. The competitive landscape in coal mining is shaped by the need for differentiation through various competitive levers, such as cost leadership, operational efficiency, and the adoption of new mining technologies. Companies are increasingly pressured to meet regulatory requirements, minimize environmental impact, and adopt sustainable practices, while also ensuring safety and efficiency in operations.

Competition in the Coal Mining Industry

The coal mining industry in Tanzania is becoming increasingly competitive, with both local and international players vying for market share in an expanding energy sector. Domestic mining companies play a crucial role in ensuring supply to local industries, while international firms, with advanced mining technology and access to capital, are targeting both export markets and large-scale mining projects.

Competition in the coal mining sector is defined by several critical factors:

- **Resource Availability:** Companies compete for access to the most resource-rich mining sites, often in remote or difficult-to-reach areas, which can influence their operational costs and output capacity.
- **Cost Efficiency:** Mining companies are under constant pressure to reduce production costs while maintaining or increasing output levels. This involves optimizing operational processes, leveraging modern extraction technologies, and minimizing wastage.
- **Technology Adoption:** The use of advanced mining technologies, such as automated machinery, drone surveillance, and resource extraction software, is increasingly important to improve efficiency and safety. Companies that integrate these technologies have a competitive advantage.
- **Sustainability and Compliance:** As global awareness of climate change grows, there is increasing demand for environmentally responsible mining practices. Firms that adopt sustainable mining techniques, such as low-emission extraction methods and responsible waste management, are better positioned to compete.
- **Supply Chain and Distribution:** The ability to transport coal efficiently to both domestic and international markets is a critical competitive factor. Companies with well-established

logistics networks and reliable transport systems are better equipped to meet market demand.

Key Factors Defining Competition in Coal Mining

The competition in the coal mining industry is influenced by several key elements:

- **Resource Accessibility:** The proximity to significant coal reserves and accessibility to extraction sites are major factors that determine a mining company's competitiveness. Locations with easier access reduce operational costs and improve overall efficiency.
- **Technological Innovation:** The ability to implement cutting-edge mining technologies that enhance safety, production rates, and environmental management gives companies a competitive edge. Automation, remote monitoring, and eco-friendly mining techniques are becoming essential for sustainable growth.
- **Operational Efficiency:** Cost-effective mining operations that maximize output while minimizing environmental and safety risks are key to competitiveness. Effective resource management, reduced downtime, and a focus on continuous improvement are critical.
- **Market Access and Infrastructure:** Mining companies with access to advanced infrastructure such as transportation networks (rail, road, or ports) have a significant competitive advantage in ensuring coal is delivered on time and cost-effectively.
- **Safety and Environmental Practices:** Companies that invest in safe mining practices and environmental management systems that meet or exceed government regulations are likely to build stronger reputations, fostering loyalty among stakeholders and investors.
- **Price Sensitivity and Market Dynamics:** Fluctuating global coal prices, particularly in export markets, can significantly impact a mining company's competitiveness. Firms that have flexible pricing strategies and cost control measures can better weather economic volatility.

SWOT Analysis for UPENDO GROUP– Coal Mining Project

Strengths

- **Resource-rich Location:** Access to coal deposits in strategically located mining sites in Tanzania that have high production potential.
- **Experienced Leadership:** Strong leadership with industry expertise in mining operations, logistics, and project management.
- **Advanced Technology Integration:** Incorporation of modern mining technologies that optimize resource extraction, enhance safety, and improve environmental stewardship.
- **Solid Financial Foundation:** Financial stability with robust capital that supports large-scale mining operations, equipment procurement, and expansion efforts.

Weaknesses

- **Geographic Constraints:** Limited operational presence in certain coal-rich regions may constrain market expansion and access to additional resources.
- **Dependency on Infrastructure:** Dependence on existing road and rail infrastructure may pose challenges related to maintenance, access, and transportation costs.
- **Environmental Compliance Risks:** Strict environmental regulations and the need for ongoing compliance can lead to increased operational costs and potential delays in project execution.

Opportunities

- **Market Expansion:** Potential for expansion into emerging coal markets both domestically and internationally, particularly in Asia and other growing economies.
- **Sustainability and Green Initiatives:** Embracing sustainable mining practices, including reduced carbon emissions and eco-friendly technologies, can enhance market reputation and regulatory compliance.
- **Technological Advancements:** Leveraging new technologies such as automated mining equipment and drone surveys can increase efficiency, reduce costs, and improve safety standards.
- **Increased Energy Demand:** Growing demand for coal in energy production, particularly from power generation plants in Tanzania and neighboring regions, presents significant opportunities.

Threats

- **Intense Competition:** Both local and international coal mining companies contribute to an increasingly saturated market, with larger players benefiting from economies of scale and technological resources.
- **Environmental Regulations:** Heightened environmental scrutiny and shifting regulations may result in increased operational costs, project delays, or restrictions on mining activities.
- **Economic Volatility:** Fluctuations in global coal prices, changes in currency exchange rates, and economic downturns may negatively impact profitability and financial performance.
- **Political and Regulatory Risks:** Political instability or changes in government policies related to mining permits, taxation, or environmental standards could disrupt operations or increase operational costs.

SECTION SIX

FINANCIAL OUTLOOK FOR COAL MINING PROJECT

This chapter presents a comprehensive and well-structured financial outlook for the proposed coal mining project. Its purpose is to demonstrate to stakeholders, investors, and financial institutions the viability and growth potential of the project. By providing a detailed forecast of revenue, expenses, profitability, and cash flow over a specified period (typically three to five years), this chapter highlights the management team's strategic planning, operational capabilities, and commitment to achieving the project's objectives.

The financial projections outlined in this section serve as a roadmap, offering transparency on revenue sources, cost structures, capital requirements, and anticipated milestones. Through these projections, we aim to build trust and confidence in the project's long-term sustainability and profitability.

This chapter is divided into several key sections:

Revenue Forecast: Detailed projections of coal sales revenue based on market demand, pricing strategies, and contract agreements with domestic and international buyers.

Cost of Extraction (COE): Outlines the direct costs involved in mining operations, such as land acquisition, extraction equipment, labor, fuel, and maintenance costs.

Operating Expenses: Covers both fixed and variable costs, including transportation, administrative expenses, royalties, and insurance, and environmental management costs.

Profit and Loss Statement: Summarizes the project's financial performance by integrating revenue, COE, and operating expenses over the forecasted period.

Cash Flow Projection: Illustrates the inflow and outflow of funds, ensuring stakeholders are informed of the project's liquidity and financial stability.

Balance Sheet Projection: Presents the financial position of the project at the end of each forecasted period, including assets, liabilities, and equity.

Assumptions

The financial projections are based on the following assumptions:

Mining Licenses: Mining licenses and permits will be secured without significant delays or changes in regulation.

Annual Coal Price Increase: Coal prices are expected to increase by 5-10% annually, based on market demand and global commodity trends.

Employee Contracts: Employee contracts are annual, with salaries considered a fixed cost, with annual increments projected at 10%.

Fuel and Energy Costs: Energy and fuel costs required for mining operations are expected to increase by 5% per year.

Environmental and Regulatory Compliance: The project will comply with all government and international environmental standards, potentially incurring additional costs for environmental management.

Revenue from Coal Sales: Coal sales revenue will grow by 15% per year as market demand for coal increases in both local and international markets.

Cost of Extraction (COE): The cost of extraction, including labor, equipment, and mining supplies, is projected to increase by 10% annually.

Economic Stability: No major economic or political disruptions (such as sudden shifts in mining regulations or government policies) will affect the market.

Weather Conditions: Stable weather conditions are assumed, with minimal impact on mining activities due to adverse weather.

Financial Year: The financial year runs from January 1st to December 31st.

Currency: All transactions will be conducted in Tanzanian Shillings (TZS).

Projected Expenses

The projected expenses for the years 2025, 2026, and 2027 include:

Land Acquisition and Site Preparation: Costs related to securing mining rights, land leasing, and preparing the mining site for extraction operations.

Mining Equipment and Operational Costs: Expenses for procuring and maintaining heavy mining equipment, fuel, and other machinery required for extraction processes.

Labor Costs: Wages for mining staff, operators, safety personnel, and contractors involved in the operation.

Transportation and Logistics: Costs for transporting coal from the mining site to processing facilities and distribution centers, including fuel, vehicle maintenance, and transport contracts.

Environmental Management: Costs related to implementing environmental mitigation strategies, including reclamation, dust control, and water treatment systems.

Administrative Overheads: Office rent, utilities, insurance, and administrative salaries.

Royalty and Tax Payments: Government royalties and taxes on coal extraction and sales.

Professional Services: Fees for legal consultants, engineers, environmental experts, and project managers.

A detailed breakdown of these expenses will be provided in the subsequent sections, including year-on-year comparisons and justifications for projected growth in costs.

Financial Forecast Highlights

Revenue Growth: Coal sales revenue is expected to grow annually by 15%, driven by increasing demand for coal in energy production and other industrial uses, both domestically and for export.

Profit Margins: Profit margins are projected to improve as the project scales and economies of scale are realized, particularly through optimizing mining operations and reducing extraction costs.

Sustainability: Emphasis on sustainable mining practices, including minimizing environmental impact and maximizing resource recovery, will reduce long-term operational costs and enhance the project's social license to operate.

The following sections provide a detailed financial analysis of the projected revenues, costs, and profitability, offering stakeholders a clear and data-driven financial framework for the success of this coal mining project. These projections are aimed at demonstrating the project's financial viability and long-term growth potential while ensuring all associated risks are effectively managed.

Operation Expenses

The following table 6.2 shows the operation Expenses for 2025-2027

Expenses	2025	2026	2027
Rent expenses	12,000,000.00	14,400,000.00	17,280,000.00
Salary and Wages	97,000,000.00	116,400,000.00	139,680,000.00
NSSF	9,700,000.00	11,640,000.00	13,968,000.00
Electricity & Water	12,060,000.00	14,472,000.00	17,366,400.00
Telephone and Internet	11,785,000.00	14,142,000.00	16,970,400.00
Fuel Expenses	59,500,000.00	71,400,000.00	85,680,000.00
Repair and Maintenance - Office and Furniture	3,100,000.00	3,720,000.00	4,464,000.00
Repair and Maintenance - Motor Vehicle	31,650,000.00	37,980,000.00	45,576,000.00
Transport Expenses	2,100,000.00	2,520,000.00	3,024,000.00
Security	24,630,000.00	29,556,000.00	35,467,200.00

Cleaning expenses	7,456,000.00	8,947,200.00	10,736,640.00
Training and Seminars	3,210,000.00	3,852,000.00	4,622,400.00
Newspapers & periodicals expenses	12,000,000.00	14,400,000.00	17,280,000.00
Printing & Stationery	6,100,000.00	7,320,000.00	8,784,000.00
Marketing and Advertisements	17,450,000.00	20,940,000.00	25,128,000.00
Staff uniforms	5,230,000.00	6,276,000.00	7,531,200.00
Meals and Accommodation	14,500,000.00	17,400,000.00	20,880,000.00
legal fee	3,100,000.00	3,720,000.00	4,464,000.00
Staff Meals	6,590,000.00	7,908,000.00	9,489,600.00
Auditing Fee	2,500,000.00	3,000,000.00	3,600,000.00
Government charges and Business Licenses	2,000,000.00	2,400,000.00	2,880,000.00
TOTAL	343,661,000.00	412,393,200.00	494,871,840.00

	2025	2026	2027	2028	2029
Sales	1,089,500,000.00	1,307,400,000.00	1,568,880,000.00	1,882,656,000.00	2,259,187,200.00
Direct Cost	700,950,000.00	841,140,000.00	1,009,368,000.00	1,211,241,600.00	1,453,489,920.00
Gross Profit	388,550,000.00	466,260,000.00	559,512,000.00	671,414,400.00	805,697,280.00
less					
Administration Expenses	343,661,000.00	412,393,200.00	494,871,840.00	593,846,208.00	712,615,449.60
Profit before Tax	44,889,000.00	53,866,800.00	64,640,160.00	77,568,192.00	93,081,830.40
Tax 30%	13,466,700.00	16,160,040.00	19,392,048.00	23,270,457.60	27,924,549.12

Net profit after Tax	31,422,300.00	37,706,760.00	45,248,112.00	54,297,734.40	65,157,281.28
----------------------	---------------	---------------	---------------	---------------	---------------

Projected Profit and Loss

Projected Balance Sheet

	2025	2026	2027	2028	2029
	TZS				
Assets					
Non-Current Assets					
Trucks	451,750,000.00	395,281,250.00	345,871,093.75	302,637,207.03	264,807,556.15
Furniture and fittings	27,456,000.00	24,024,000.00	21,021,000.00	18,393,375.00	16,094,203.13
Computers and IT Equipment	7,450,000.00	4,656,250.00	2,910,156.25	1,818,847.66	1,136,779.79
Total Non-current Assets	486,656,000.00	423,961,500.00	369,802,250.00	322,849,429.69	282,038,539.06
Current Assets					
Cash and Cash Equivalent	56,975,000.00	113,894,000.00	136,672,800.00	164,007,360.00	152,244,635.00
Prepaid Tax	3,000,000.00	4,000,000.00	5,000,000.00	5,000,000.00	5,000,000.00
Debtors	69,853,800.00	83,824,560.00	135,676,397.00	168,866,897.31	237,727,201.77
Total Current Assets	129,828,800.00	201,718,560.00	277,349,197.00	337,874,257.31	394,971,836.77
Total Assets	616,484,800.00	625,680,060.00	647,151,447.00	660,723,687.00	677,010,375.83
Capital and Liabilities					

Capital	500,000,000.00	531,422,300.00	569,129,060.00	614,377,172.00	614,377,172.00
Accumulated Profit/loss	31,422,300.00	37,706,760.00	45,248,112.00	-	-
Total Capital	531,422,300.00	569,129,060.00	614,377,172.00	614,377,172.00	614,377,172.00
Liabilities					
Creditors	85,062,500.00	56,551,000.00	67,861,200.00	81,433,440.00	97,720,128.00
Loan	-	-	-		
Total Liabilities	85,062,500.00	56,551,000.00	32,774,275.00	46,346,515.00	62,633,203.00
Total Capital and Liability	616,484,800.00	625,680,060.00	647,151,447.00	660,723,687.00	677,010,375.00

Projected Cash Flow

	2024	2025	2026	2027	2028
Beginning Balance	0				
Cash Inflow					
Revenue	1,089,500,000.00	1,307,400,000.00	1,568,880,000.00	1,882,656,000.00	2,259,187,200.00
Cash Outflow					
Cost of Sales	700,950,000.00	841,140,000.00	1,009,368,000.00	1,211,241,600.00	1,453,489,920.00
Operating expenses	343,661,000.00	412,393,200.00	494,871,840.00	593,846,208.00	712,615,449.60

Total Cash Outflow	1,044,611,000.00	1,253,533,200.00	1,504,239,840.00	1,805,087,808.00	2,166,105,369.60
Closing Balance	44,889,000.00	53,866,800.00	64,640,160.00	77,568,192.00	93,081,830.40

Investment Breakdown	Tshs.M
Land/Building	-
Plant	-
Vehicles	451,750,000
Furniture & Fittings	27,456,000
Pre-expenses	3,000,000
Others	7,450,000
Working Capital	1,000,000,000
TOTAL	1,495,656,000

SECTION SEVEN

BUSINESS EXPANSION: LONG-RANGE GOALS FOR COAL MINING PROJECT

Upendo Group envisions a future of significant growth and success in the coal mining sector. The company recognizes that as global and domestic demand for coal continues to rise, opportunities for expansion and profitability will increase substantially. To support this vision, the following long-term goals have been set:

Market Expansion and Regional Dominance Upendo Group aims to expand its market reach and establish a dominant presence within Tanzania and other East African countries. By entering new geographic regions and capitalizing on strategic location advantages, the company seeks to position itself as a leading coal supplier in the region. This expansion will focus on meeting the increasing demand for coal in energy production, manufacturing, and export markets.

Diversification of Product Offerings Diversification of services is a critical element of Upendo Group long-term strategy. Beyond traditional coal mining, the company plans to explore opportunities in value-added products, including coal processing, briquette production, and the development of by-products for the chemical industry. Diversification will help the company cater to a broader customer base and adapt to shifting market needs.

Technology Integration for Efficiency Integrating advanced mining technologies is key to optimizing operations and maintaining competitiveness. Upendo Group will implement automation, real-time data analytics, and artificial intelligence to improve the efficiency of mining processes, reduce operational costs, and enhance safety standards. Leveraging innovation will allow the company to lead the industry in terms of productivity and operational excellence.

Sustainability and Eco-Friendly Practices Upendo Group is committed to incorporating sustainable mining practices into its operations. The company will focus on reducing its environmental footprint by adopting green mining technologies, efficient water and waste management systems, and carbon offset programs. These initiatives will align with global environmental trends and enhance the company's appeal to investors and stakeholders focused on environmental responsibility.

Strategic Partnerships and Collaborations Building strategic alliances will be crucial for the success of Upendo Group. The company aims to form partnerships with government agencies, energy providers, and other industry stakeholders. These collaborations will help the company secure necessary licenses, navigate regulatory frameworks, and access funding for large-scale expansion projects.

Customer-Centric Approach Upendo Group places a strong emphasis on building long-term relationships with customers. By ensuring the consistent delivery of high-quality coal, transparent dealings, and timely shipments, the company aims to foster trust and loyalty among its clients. A customer-first approach will help maintain a solid market position and encourage repeat business.

Employee Development and Engagement Investing in the development of a skilled and motivated workforce is essential to the success of the company. Upendo Group will offer ongoing training, professional development programs, and incentives to its employees, ensuring they remain engaged, productive, and committed to achieving the company's goals. A strong workforce will enable the company to maintain high safety standards and operational efficiency.

Financial Sustainability and Growth Upendo Group is committed to ensuring financial sustainability through prudent financial management. By maintaining a strong focus on profitability, cost control, and reinvestment into the business, the company will continue to expand and strengthen its financial position. This approach will provide the necessary capital for ongoing innovation and growth.

Adaptability to Industry Trends The coal mining industry is evolving, and Upendo Group is dedicated to remaining adaptable to new trends and market changes. The company will monitor emerging trends such as cleaner coal technologies, shifting global coal demand, and regulatory changes in environmental laws to ensure its operations remain competitive and aligned with market needs.

Corporate Social Responsibility (CSR) Upendo Group is committed to making a positive impact in the communities where it operates. Through CSR initiatives that focus on environmental conservation, education, healthcare, and local infrastructure development, the company will contribute to sustainable community development. CSR efforts will foster goodwill, strengthen the company's social license to operate, and align with ethical business practices.

Public Listing As part of its long-term growth strategy, Upendo Group plans to explore the possibility of going public. By listing on a stock exchange, the company can raise additional capital, attract new investors, and increase its visibility in the global marketplace. This move will support the company's continued expansion and provide access to new sources of funding for future projects.

UPENDO GROUP is dedicated to building a legacy of operational excellence, sustainability, and customer satisfaction in the coal mining sector. These long-term goals will guide the company toward becoming a trusted leader in the industry, driving growth and success for all stakeholders involved.