

BUSINESS PLAN FOR CARGO TRANSPORTATION PROJECT

VELTRA ENERGY LIMITED

Plot No. 189,191, & 193, Vibweni nearby Vijibweni hospital,
Kigamboni, Dar es Salaam region

VELTRA ENERGY LIMITED

P. O. Box 100049, DARES SALAAM

Email: Sadiqhashi93@gmail.com

1.0 INTRODUCTION

VELTRA ENERGY LIMITED is a company incorporated in Tanzania with certificate No. 184853019 issued on 12nd May, 2025 as private limited company under the Tanzanian Companies Act, 2002. VELTRA ENERGY LIMITED is engaged in the business of Transportation and Logistics, VELTRA ENERGY LIMITED is currently planning to provide global supply chain solutions providers within the country and in east Africa and SADC region.

1.1 OUR MISSION

To become a leading integrated global logistics and supply chain management company providing business enabling solutions and exceeding customer expectations.

1.2 OUR VISION

To deliver customized and unique logistics solutions globally ensuring time and cost savings for customers in a responsible and sustainable manner.

1.3 OUR VALUES

At VELTRA ENERGY LIMITED, we believe the customer comes first; we are focused to ensure customer delight, superior quality of delivery and increased customer profitability.

At VELTRA ENERGY LIMITED, at our operations all over the country, we practice an enduring value system based on an open culture, honest and fair business and personal conduct, earning the confidence and trust of our Associates and Customers.

At VELTRA ENERGY LIMITED, we practice transparency with all agencies that we are involved with.

At VELTRA ENERGY LIMITED, we value the importance of our colleagues, evolving a sense of togetherness and passion to deliver

1.4 COMPANY OWNERSHIP

VELTRA ENERGY LIMITED is promoted by five shareholders who are very experienced in transport and logistic business.

VELTRA ENERGY LIMITED

P. O. Box 100049, DARES SALAAM

Email: Sadiqhashi93@gmail.com

Name of shareholders	% Ownership	Nationality
SADIQ HASHI P.O. Box 100049 -DAR ES SALAAM	50	Dutch
AHMED ABDIAR HASHI P.O. Box 100049 -DAR ES SALAAM	50	Dutch

1.6 PROJECT LOCATION

Project location of transportation is located at **Plot No. 189,191, & 193, Vibweni nearby Vijibweni hospital, Kigamboni, Dar es Salaam region**

1.7 FLEET SIZE

VELTRA ENERGY LIMITED is planning to purchase **200** trucks and trailers. With capacity of carrying **20** tons truck and trailer, one truck conducting **1** round trips per month operating for ten months per year, carrying 88,000Mt / per year VELTRA ENERGY LIMITED **management** intends to continue building its fleet to a level of 200 trucks

Required number of trailers will also be added to existing fleet in order to cater to additional requirements in line with truck additions.

1.8 PROJECT ESTIMATED REVENUE

The company has estimated that the project revenue to be US\$ 5000 per trip

1.9 PROJECT OPERATING COST

The company has estimated that the project operating cost and other cost to be 80% of the total annual revenue

1.10 PROJECT FINANCING

The company has estimated that the project will be financed by long term loan amounting to US\$ 5,232,000 with interest rate of 8% repaid within 5 years and remaining US\$ 2,000,000 will be shareholders contribution and cashflow from operations

VELTRA ENERGY LIMITED

P. O. Box 100049, DARES SALAAM

Email: Sadiqhashi93@gmail.com

1.11 PROJECT COST

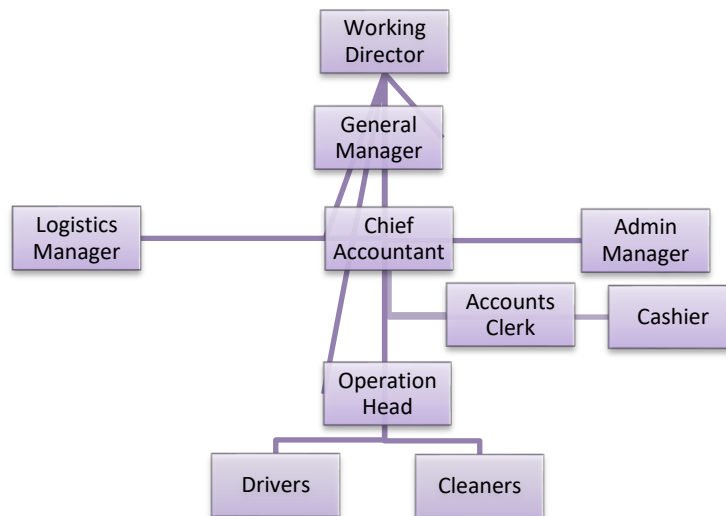
The project has budgeted to cost the followings:

Land and Buildings	200,000
Machinery & Equipment	700,000
Motor Vehicles	4,300,000
Furniture & Fixtures	10,000
Pre exp	15,000
Others	7,000
Working Capital	2,000,000
TOTAL	7,232,000

2.0 ORGANISATION FLOW CHART

VELTRA ENERGY LIMITED management is headed by Managing Director. Core management team comprises of 1 General Manager, 1 HR and Admin Manager, 1 Logistics Manager, 1 Chief Accountant and 2 Junior accounting clerks. Operational team headed by 3 operational managers and includes drivers and cleaners.

The organisation chart of the VELTRA ENERGY LIMITED is presented herein below:



VELTRA ENERGY LIMITED

P. O. Box 100049, DARES SALAAM

Email: Sadiqhashi93@gmail.com

Total of 240 Employees to be employed on full scale operation

3.0 TANZANIA TRANSPORT OVER VIEW

Global trends increasingly highlight transport and logistics as central to economic growth, and Tanzania is no exception. The transport sector is a major contributor to Tanzania's foreign currency reserves, with USD 2,614.8 million, ranking third after the travel/tourism sector (USD 3,642.5 million) and minerals (USD 3,608.5 million). Combined, the transport and tourism sectors account for 42.62% of the country's foreign currency reserves. The sector's significance is further underscored by its positive impact on the current account, where the service account (primarily transport and travel) recorded a surplus of USD 4,569.70 million in FY 2024, compared to a deficit of USD 5,915.9 million in the goods account.

In terms of GDP, transport and storage contribute 7.8% to the GDP, making it the fifth-largest sector, and contributed 6.3% to GDP growth for the year ended 31 June 2023.

Tanzania Road Transport

Road transport is the most widely used form of transport in Tanzania, carrying over 90% of the passengers and 75% of the freight traffic in the country.

The road network in Tanzania currently comprises 86,472 kilometers of roads, of which 12,786 kilometers are trunk roads, 21,105 kilometers are regional roads and the remaining 52,581 kilometers are district, urban and feeder roads.

Tanzania's Ministry of Works, Transport, and Communication through the Tanzania National Roads Agency (TANROADS) is managing the national road network of about 33,891 kilometers, comprising 12,786 kilometers of trunk and 21,105 kilometers of regional roads.

The remaining network of about 53,460 kilometers of urban, district and feeder roads is under the responsibility of the Prime Minister's Office Regional Administration and Local Government (PMO-RALG).

VELTRA ENERGY LIMITED

P. O. Box 100049, DARES SALAAM

Email: Sadiqhashi93@gmail.com

Tanzania Rail Transport

Railway transport is the second most important mode of transport after road and critical for long distance freight along the main transport corridors in Tanzania.

Tanzania has a total of 3,676 kilometers of railway lines operated by two railway systems, Tanzania Railways Corporation (TRC) and Tanzania – Zambia Railways (TAZARA).

The mainline of TRC comprises the central corridor between the port of Dar es Salaam in the east, linking central and western areas of the country and terminating at Kigoma on Lake Tanganyika in the west.

The TAZARA line is 1,860 kilometers in length, of which 975 kilometers is in Tanzania and 885 kilometers in Zambia.

Tanzania Air Transport

The total number of air passengers in Tanzania reached 6.2 million in 2019, compared to 5.2 million in 2015, representing an increase of 18%.

Currently (2020), there are 19 airline operators in Tanzania, including some of the leading international air carriers such as British Airways, KLM, Qatar Airways, and SWISS.

There are 58 airports in Tanzania and more than 300 private airstrips owned by mining companies and tour operators.

The Julius Nyerere International Airport (JNIA), located in Dar es Salaam, is the largest and busiest airport in Tanzania, accounting for over 70% of Tanzania's air passengers.

In August 2019, Tanzanian President John Magufuli inaugurated Terminal 3 of the JNIA. The new terminal, which cost USD 314 million set the airport capacity at 8 million passengers annually.

VELTRA ENERGY LIMITED

P. O. Box 100049, DARES SALAAM

Email: Sadiqhashi93@gmail.com

In 2019, the AfDB approved a USD 272.12 million loan to Tanzania for the construction of a new international airport in the capital Dodoma. The new airport will be built in the district of Msalato, 12 kilometers from the capital Dodoma.

The new facility is expected to handle at least 50,000 aircrafts and one million passengers per year.

Tanzania Water Transport

Tanzania has a coastline of about 720 kilometers on the Indian Ocean, and also borders Lake Victoria, Lake Nyasa, and Lake Tanganyika.

Both sea and inland waterways ports in Tanzania are managed and operated by the Tanzania Ports Authority (TPA).

The TPA's main Indian Ocean ports are Dar es Salaam, Mtwara, and Tanga. Minor seaports serving coastal traffic include Lindi, Kilwa Masoko, Mafia Island, Bagamoyo, Pangani, and Kwale.

Dar es Salaam is Tanzania's principal port with intrinsic capacity of 10.1 tonnes per year. The port handles over 92% of the total maritime ports' throughput.

The port serves land-linked countries of Malawi, Zambia, Democratic Republic of Congo, Rwanda, Burundi, and Uganda.

These countries are connected to the port through two railway systems (TRL-1.0 metre gauge and TAZARA-1.067 cape gauge), road network, as well as the TAZAMA oil pipeline to Zambia.

TPA also operates Tanzania's lake ports, maintaining around 20 ports on Lake Victoria. Some major ports include Bukoba, Kemono Bay, Musoma, and Nansio.

Principal lake ports on Tanganyika include Kigoma and Kasanga. Additionally, there are 15 smaller ports along the lake. These ports provide trade

VELTRA ENERGY LIMITED

P. O. Box 100049, DARES SALAAM

Email: Sadiqhashi93@gmail.com

connections between Burundi, Eastern Democratic Republic of the Congo, and Zambia.

Lake Nyasa has 4 important ports, at Itungi, Mbamba Bay, Liuli, and Manda. There are up to 10 others smaller TPA ports on the lake that facilitate passenger movement along the lake and between the countries of Malawi, Mozambique, and Tanzania.

4.0 TANZANIAN BUSINESS ENVIRONMENT

In the African continent, TANZANIA is among the top ten investment destinations in Africa, thanks to reforms and a conducive investment environment set by the government.

The Rand Merchant Bank (RMB) ranked the country tenth in investment attractiveness, in the Where to Invest in Africa 2024 report.

4.1 THE TANZANIA DEVELOPMENT CORRIDORS

Development of transport corridors has been one of the main strategies adopted by the Government of Tanzania to facilitate trade. Tanzania serves as a transit country for the import and export of Malawi, Zambia, DR Congo, Burundi, Rwanda and Uganda, using the port of Dar es Salaam. The main rail and road connections in Tanzania are, therefore, in an east-west direction, linking the ports with the hinterlands of those neighbouring countries. Tanzania is devoting much attention to the corridor concept in its development policy by concentrating efforts in the

Mtwara Corridor, Dar-es-Salaam Corridor, Central Corridor and the Tanga Corridor. The major challenge is to link import, export and transit traffic from and to neighbouring countries with transport development efforts, making Tanzania a natural regional hub.

The geography of Tanzania, including its size, diversity and dispersion, give roads a special position in the integration of the national economy. In particular, roads serve rural areas, where the majority of the people live, more effectively than any other mode of transport. The current Tanzania Road Network length is about 85,000 km, which includes trunk and regional roads (35,000 km) managed by the Tanzania National Roads Agency (TANROADS), and the urban,

VELTRA ENERGY LIMITED

P. O. Box 100049, DARES SALAAM

Email: Sadiqhashi93@gmail.com

district and feeder roads with a total of 50,000 km, managed by Local Government Authorities (LGA). There are also some unclassified roads, such as those managed by the Tanzania National Parks Authority (TANAPA), and by the Mining Companies and village authorities.

5.0 SWOT ANALYSIS

STRENGTHS

Strengths of the business are –

- Promoters have sound experience in this business and have talented Management.
- Rapid growth in sector due to effective management
- Influence & Networking of Directors in the Business Sector.
- Business location is at prominent place.
- Good roads and highway in Tanzania.
- Confirmed business via agreement entered with few companies.

WEAKNESSES

Weakness of the business are –

- New entry in logistics market
- Stiff competition from local market and foreign for transit cargo
- Limited market share growth

OPPORTUNITIES

Opportunities of the business are –

- Potential market encourages foreign investors
- Increasing market share due to rail transport limitations
- Augmented demand for world –class logistics and warehousing services
- Increased use of logistics services in sectors such as technology, consumer retail, automotive and industrial

THREATS

Threats of the business are –

- Complex Tax Structure

VELTRA ENERGY LIMITED

P. O. Box 100049, DARES SALAAM

Email: Sadiqhashi93@gmail.com

- Unorganised sector and competition
- Different laws in different countries
- Increasing fuel rates therefore increasing transportation costs

6.0 SERVICES OFFERED BY VELTRA ENERGY LIMITED

VELTRA ENERGY LIMITED Management understands that your supply chain needs are unique and that's exactly why the company have engaged the best minds in the Transport industry to create specific transport solutions customized to suit your ever-changing cargo movement environment. VELTRA ENERGY LIMITED transport vans, trucks and trailers (closed body trailers, flatbed trailers and low loaders) from precision transport are designed to seamless execution, VELTRA ENERGY LIMITED dedicated cargo transportation professionals are engaged at every step of the way to provide the services with the most accurate transport and economical transportation arrangement that the industry has to offer.

VELTRA ENERGY LIMITED Transportation and the company Customs Brokerage Service allow the company to complete the supply chain, cargo transit and offers truly door-to-door transportation service in the freight industry. The company optimized transportation translates to fast transit service and the door-to-door delivery of your freight on time, safely transported and damage free.

Transport integration with Customs Brokerage Service

- Allows VELTRA ENERGY LIMITED Transport Logistics to complete the supply chain and offer truly door-to-door transportation service in the market
- Eliminates unnecessary customs delays, transport dispatch and improves communication between the shipping line, Customs, Client and our transport department.
- Provides greater control, handling and security of your freight transportation
 - Full range of freight forwarding services are offered, including customs clearance, warehousing, in-bond storage, transportation, etc.
 - Customer receives a single itemized invoice for door-to-door transportation eliminating additional administrative requirements

VELTRA ENERGY LIMITED

P. O. Box 100049, DARES SALAAM

Email: Sadiqhashi93@gmail.com

VELTRA ENERGY LIMITED Transport Logistics plan to customize and design transportation solutions to transport client's freight at the speed and ease. VELTRA ENERGY LIMITED Management has been in the transport logistics and our transport segment delivers freight to numerous customers spread across east Africa namely Tanzania, Uganda, Northern Tanzania, Burundi, Rwanda, Southern Sudan and DR Congo.

VELTRA ENERGY LIMITED plan to combine the economy of rail transport with road transport handling for seamless door-to-door service and savings. The company transport network throughout Tanzania, Uganda, Northern Tanzania, Burundi, Rwanda, Southern Sudan and DR Congo and large transport trucks, closed body trailers, flat bed trailers and low loaders fleet are aligned to offer transport applications suitable for all transportation needs. Whether clients freight requires rail transport or road transportation service, door-to-door transport, coast-to-coast

transport, or cross-border transportation, VELTRA ENERGY LIMITED Transport Logistics is the solution.

Benefits of optimized door to door delivery and transportation

- VELTRA ENERGY LIMITED Transportation is dedicated to creating win-win solutions by investing talent, capital, and transport resources.
- Dynamic transport route optimization systems at client's disposal to create supply-chain door to door and reduce transport costs.
- The largest transportation truckload fleet and terminal network in the transport industry.
- Satellite tracking on our transport
- Modern fleet of transport trucks
- One of the Safest operating fleets in the transport industry
- Heavy and fragile equipment transported using air hydraulic low loaders.
- Door-to-door control of transport equipment = less handling, better security, and increased efficiency
- Fully multilingual experienced transport staff to cater all our transportation routes
- Strict requirements for transport department staff and constant integrity checks transport and delivery.

VELTRA ENERGY LIMITED

P. O. Box 100049, DARES SALAAM

Email: Sadiqhashi93@gmail.com

Container Transport Mode (Container on Flat Bed)

VELTRA ENERGY LIMITED Capital offers a complete door-to-door service for all of your container transport requirements. Our road transport fleet is comprised of 200 trucks and transportation trailers. The company plans to have the most modern container transport fleet in the transport industry and our container transport trucks are all equipped with satellite tracking, permitting real time tracking of your loads.

VELTRA ENERGY LIMITED Transport Logistics also supplement road transport fleet with our access to our East Africa railway transport line. VELTRA ENERGY LIMITED Transport Logistics is capable of transporting heavy and bulk cargo on Low Loader, rail and can also transport transit cargo on rail and low-loaders.

Heavy Haulage – Low-Loader Transportation

VELTRA ENERGY LIMITED transportation Low Loaders comprise of a variety of unique low loader trailer configurations, VELTRA ENERGY LIMITED Capital is still constantly engineering new low loader transport solutions for our customers' Low Loader Transportation requirements. VELTRA ENERGY LIMITED Transportation Logistics is rapidly becoming the preeminent low loader transport provider for importers and exporters of many commodities, including earth transporting equipment and engineering structures that has to be transport on low loaders. Low loader as the industry's most dynamic carrier, VELTRA ENERGY LIMITED Transportation plans to expand our diverse portfolio of service-sensitive, specialty operations to meet our clients' low loaders needs.

Heavy Equipment Transport

Whether it is around town or interstate VELTRA ENERGY LIMITED Transportation has the low loaders and heavy transport equipment to transport any sized machines. We have low loader expertise required to transport, arrange all the permits, liase with police, load and unload cranes.

Mining Equipment Transport

VELTRA ENERGY LIMITED Low loader transport offers transportation services for heavy equipment utilizing their low loader trailers and has experienced transporting a range of Mining equipment including Hitachi Excavators, Zoom

VELTRA ENERGY LIMITED

P. O. Box 100049, DARES SALAAM

Email: Sadiqhashi93@gmail.com

Lion Cranes, Caterpillars and Komatsu Dump Trucks, concrete mixers, graders and bulldozers on low loaders.

Local cargo

VELTRA ENERGY LIMITED offers the fastest Local cargo service in Tanzania. This airport-to-airport service puts your cargo, envelopes and other packages on the first scheduled flight and delivers them to the recipient at the airport of arrival within one hour after the landing time. No advance reservations are required for this service.

Tanzanian Cargo provides around-the-clock Local cargo service with same-day delivery across Tanzania.

Transit Cargo

VELTRA ENERGY LIMITED strive to extend standard services across vast distances and through rough terrain all across East Africa. Our motivated staff and our expertise in the industry always keep us on schedule by rail and road. VELTRA ENERGY LIMITED provide relocation and movement of both of bulk and containerized goods. VELTRA ENERGY LIMITED offer a variety of transport solutions, be it grouping or other transport services such as part and full load shipments by road, railways or a combination of two

7.0 **COMPETITION**

According to data available, it is projected there are 1,270,000 vehicles by the year 2025. rucks registered in Tanzania and VELTRA ENERGY LIMITED plan to compete favorably with local and foreign companies

8.0 **FINANCIAL ASPECTS FOR THE PROJECT**

(i) Projected Profit and Loss Statement

The attached Appendix I shows the projected income for the 8years period. The position depicted is that the project earns profit throughout its life. Accumulated after tax profits grow from. **US\$ 1,061,832 in** the 1st year to **US\$ 13,177,192 in** the 5th year.

(ii) Projected Cash Flows

The project's cash flows are shown in Appendix II. They depict a good liquid position right from the first year. Cash accumulation builds up from **US\$**

VELTRA ENERGY LIMITED

P. O. Box 100049, DARES SALAAM

Email: Sadiqhashi93@gmail.com

3,338,168 in the first year to **US\$ 18,058,648** at the end of 5th years of the project's operations.

(iii) **Projected Balance Sheet**

The owners' equity is shown in Appendix III. Owners' equity grows from **US\$ 2,00,000** in the first year to **US\$ 15,177,192** at the end of 5th years of the project's operations based on 200 trucks

(iv) **Payback Period**

Total investment is **US\$7,232,000** cash accumulation in 3rd year **US\$ 10,408,863** which is more than the initial investment, the project payback Period is exactly 3 years.

(v) **Loan repayment**

Total investment loan is US\$ 5,232,000 to be repaid within 5 years.

9.0 **ECONOMIC ASPECTS OF THE PROJECTS**

Besides the financial/monetary returns to the owners, there are other benefits to be derived for the whole country viz.

(i) **Employment Opportunities**

Employment and poverty reduction are among the major concern of the Central and the Local Government authorities. It is gratifying to note that the company, is going to provide additional employment to 240 people. This is a significant contribution coming from local investors.

(ii) **Revenue to the Government**

The Project is expected to pay a substantial annual amount in the form of corporation tax and other taxes

(iii) **Foreign Exchange Earning**

Since the project's clientele is mostly towards neighbouring countries the project will thus earn foreign currency for the United Republic of Tanzania. Out of all project expected cargo overhauling transactions will be settled in foreign currencies. In this study we have assumed that the project will be paid in foreign currency

10.0 **CONCLUSION**

(i) The project is profitable and contributes to government revenue by way of taxes.

VELTRA ENERGY LIMITED

P. O. Box 100049, DARES SALAAM

Email: Sadiqhashi93@gmail.com

- (ii) The project provides employment to 240 people.
- (iii) The project is an encouraging sign to prove that we have good business environments and we have investors who have confidence in their country. Tanzania so much so that they are ready to invest such large sums of investment despite the odds of the sector in question.

11.0 **RECOMMENDATION**

After the foregoing economic and financial evaluation of the project, we strongly recommend that this project be implement and be given all the support required by all the concerned Government Ministries and Agencies, including the Tanzania

Revenue Authority, TRA and the Tanzania Investment Centre – (TIC). The project deserves this support because of its viability, since it is technical feasible, economically viable and socially acceptable.

VELTRA ENERGY LIMITED

P. O. Box 100049, DARES SALAAM

Email: Sadiqhashi93@gmail.com

APPENDIX I

VELTRA ENERGY LIMITED PROJECTED PROFIT AND LOSS STATEMENT US\$

	1	2	3	4	5
Revenue (Food & drinks)	22,000,000	23,100,000	24,255,000	25,467,750	26,741,138
Operating Expenses:	17,600,000	18,480,000	19,404,000	20,374,200	21,392,910
Profit before Depreciation & Interest	4,400,000	4,620,000	4,851,000	5,093,550	5,348,228
Interest	418,560	334,848	251,136	167,424	83,712
Depreciation	442,000	442,000	442,000	442,000	442,000
Gross Profit	3,539,440	3,843,152	4,157,864	4,484,126	4,822,516
Tax (30%)	1,061,832	1,152,946	1,247,359	1,345,238	1,446,755
Profit After Tax	2,477,608	2,690,206	2,910,505	3,138,888	3,375,761
Accumulated Profit	1,061,832	3,752,038	6,662,543	9,801,431	13,177,192

VELTRA ENERGY LIMITED

P. O. Box 100049, DARES SALAAM

Email: Sadiqhashig3@gmail.com

APPENDIX II

VELTRA ENERGY LIMITED PROJECTED CASH FLOWS US\$

SOURCES:		1	2	3	4	5
Profit before interest and depreciation	-	4,400,000	4,620,000	4,851,000	5,093,550	5,348,228
Equity	2,000,000					
Loan	5,232,000					
Total Sources	7,232,000	4,400,000	4,620,000	4,851,000	5,093,550	5,348,228
Applications:						
Capital expenditure	5,210,000	-	-	-	-	-
working Capital & Others	2,022,000					
Cash	-	3,338,168	3,467,054	3,603,641	3,748,312	3,901,473
Tax	-	1,061,832	1,152,946	1,247,359	1,345,238	1,446,755
Sub total	7,232,000	4,400,000	4,620,000	4,851,000	5,093,550	5,348,228
Total applications	7,232,000	4,400,000	4,620,000	4,851,000	5,093,550	5,348,228
Accumulated cash		3,338,168	6,805,222	10,408,863	14,157,175	18,058,648

VELTRA ENERGY LIMITED

P. O. Box 100049, DARES SALAAM

Email: Sadiqhashi93@gmail.com

APPENDIX III

VELTRA ENERGY LIMITED PROJECTED BALANCE SHEET US\$

Fixed Assets		1	2	3	4	5
Opening balance	-	5,210,000	4,768,000	4,326,000	3,884,000	3,442,000
Additions	-					
Total Long-term Assets	-	5,210,000	4,768,000	4,326,000	3,884,000	3,442,000
Less depreciation	-	442,000	442,000	442,000	442,000	442,000
Closing balance	-	4,768,000	4,326,000	3,884,000	3,442,000	3,000,000
Working capital	2,022,000	2,022,000	2,022,000	2,022,000	2,022,000	2,022,000
Accumulated cash	-	3,338,168	6,805,222	10,408,863	14,157,175	18,058,648
Total assets	2,022,000	10,128,168	13,153,222	16,314,863	19,621,175	23,080,648
Financed by						
Equity	2,000,000	2,000,000	2,000,000	2,000,000	2,000,000	2,000,000
Accumulated profit	-	1,061,832	3,752,038	6,662,543	9,801,431	13,177,192
Total equity	2,000,000	3,061,832	5,752,038	8,662,543	11,801,431	15,177,192
Long term loan	5,232,000	4,185,600	3,139,200	2,092,800	1,046,400	-
Bank overdraft	-	-	-	-	-	-
Total debts	5,232,000	4,185,600	3,139,200	2,092,800	1,046,400	-
Total equity and debts	7,232,000	7,247,432	8,891,238	10,755,343	12,847,831	15,177,192

VELTRA ENERGY LIMITED

P. O. Box 100049, DARES SALAAM

Email: Sadiqhashig3@gmail.com

APPENDIX IV

VELTRA ENERGY LIMITED PROJECTED DEPRECIATION SCHEDULE US\$

NAME OF ASSETS	1	2	3	4	5
Land And Buildings	200,000	196,000	192,000	188,000	184,000
Machinery, Tools & Equipment	700,000	693,000	686,000	679,000	672,000
Motor Vehicles	4,300,000	3,870,000	3,440,000	3,010,000	2,580,000
Furniture & Fixtures	10,000	9,000	8,000	7,000	6,000
Total	5,210,000	4,768,000	4,326,000	3,884,000	3,442,000
DEPRECIATION	1	2	3	4	
Land and buildings	4,000	4,000.00	4,000.00	4,000.00	4,000.00
Machinery tools & Equipment	7,000	7,000.00	7,000.00	7,000.00	7,000.00
Motor Vehicles	430,000	430,000	430,000	430,000	430,000
Furniture & Fixtures	1,000	1,000.00	1,000.00	1,000.00	1,000.00
ANNUAL DEPRECIATION	442,000	442,000	442,000	442,000	442,000

VELTRA ENERGY LIMITED

P. O. Box 100049, DARES SALAAM

Email: Sadiqhashig3@gmail.com

APPENDIX V

VELTRA ENERGY LIMITED PROJECTED LONG TERM LOAN REPAYMENT

Year	Principle	Loan Interest (8%)	Total Amount Paid	Loan Balance
1	1,046,400	418,560	1,464,960	5,232,000
2	1,046,400	334,848	1,381,248	4,185,600
3	1,046,400	251,136	1,297,536	3,139,200
4	1,046,400	167,424	1,213,824	2,092,800
5	1,046,400	83,712	1,130,112	1,046,400

VELTRA ENERGY LIMITED

P. O. Box 100049, DARES SALAAM

Email: Sadiqhashi93@gmail.com

APPEDIX VI

VELTRA ENERGY LIMITEDCOST STRUCTURE

Land and Buildings	200,000
Machinery & Equipment	700,000
Motor Vehicles	4,300,000
Furniture & Fixtures	10,000
Pre exp	15,000
Others	7,000
Working Capital	2,000,000
TOTAL	7,232,000

