

BUSINESS PLAN FOR LIQUID AND DRY CARGO TRANSPORTATION PROJECT

SEISEN GLOBAL LOGISTICS LIMITED

Plot No. 116, Block 07 Tazama Road Street, Vijibweni ward,
Kigamboni District, Dar Es Salaam Region, Tanzania

SEISEN GLOBAL LOGISTICS LIMITED

1.0 INTRODUCTION

SEISEN GLOBAL LOGISTICS LIMITED is a company incorporated in Tanzania with certificate No. 180562648 dated 18th December 2024 as private limited company under the Tanzanian Companies Act, 2002. SEISEN GLOBAL LOGISTICS LIMITED is engaged in the liquid and dry cargo transportation, SEISEN GLOBAL LOGISTICS LIMITED is currently planning to provide global supply chain solutions providers within the country and in east Africa and SADC region.

1.1 OUR MISSION

To become a leading integrated global logistics and supply chain management company providing business enabling solutions and exceeding customer expectations.

1.2 OUR VISION

To deliver customized and unique logistics solutions globally ensuring time and cost savings for customers in a responsible and sustainable manner.

1.3 OUR VALUES

At SEISEN GLOBAL LOGISTICS LIMITED, we believe the customer comes first; we are focused to ensure customer delight, superior quality of delivery and increased customer profitability.

At SEISEN GLOBAL LOGISTICS LIMITED, at our operations all over the country, we practice an enduring value system based on an

SEISEN GLOBAL LOGISTICS LIMITED

open culture, honest and fair business and personal conduct, earning the confidence and trust of our Associates and Customers.

At SEISEN GLOBAL LOGISTICS LIMITED, we practice transparency with all agencies that we are involved with.

At SEISEN GLOBAL LOGISTICS LIMITED, we value the importance of our colleagues, evolving a sense of togetherness and passion to deliver. OWNERSHIP AND OPERATIONS

1.4 **COMPANY OWNERSHIP AND BOARD OF DIRECTORS**

SEISEN GLOBAL LOGISTICS LIMITED is promoted by two shareholders who are very experienced in transport and logistic business.

Share Holders	% of Share	Nationality
NSENGIYUMVA BUYIBUYI JEAN BAPTISTE	80	Democratic Republic of the Congo
SEIF RUKUNDO	20	Burundi

1.6 **PROJECT LOCATION**

Registered office of the SEISEN GLOBAL LOGISTICS LIMITED is located at **Plot No. 116, Block 07 Tazama Road Street, Vijibweni ward, Kigamboni District, Dar Es Salaam Region, Tanzania**

SEISEN GLOBAL LOGISTICS LIMITED

1.7 FLEET SIZE

SEISEN GLOBAL LOGISTICS LIMITED is planning to purchase **120** trucks and trailers. With capacity of carrying **20-25** tons truck and trailer, one truck conducting **2** trips per month operating for ten months per year, carrying **2400** trips per year

SEISEN GLOBAL LOGISTICS LIMITED management intends to continue building its fleet to a level of –

- 40 trucks and trailers by 2025
- 40 trucks and trailers by 2026
- 40 trucks and trailers by 2027

1.8 PROJECT ESTIMATED REVENUE

The company has estimated that the project revenue to be US\$ 5000 per trip and one truck will conduct round trip per month and 20 trips per year

1.9 PROJECT OPERATING COST

The company has estimated that the project operating cost and other cost to be 75% of the total annual revenue

1.10 PROJECT FINANCING

The company has estimated that the project will be financed by long term loan amounting to US\$6,000,000 with interest rate of

SEISEN GLOBAL LOGISTICS LIMITED

8% repaid within 6 years and remaining US\$ 6,620,100 will be shareholders contribution and cash generated from Business

1.11 PROJECT COST

SEISEN GLOBAL LOGISTICS LIMITED transport project has budgeted to cost the followings:

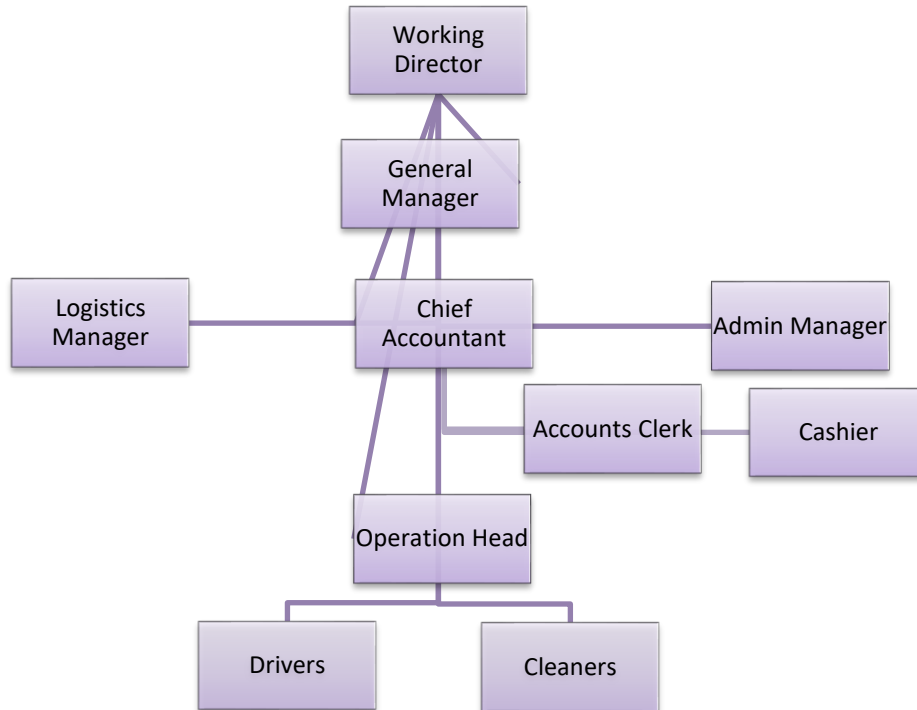
PARTICULAR	US\$
Land and Buildings	400,000.00
Machinery & Equipment	1,400,000.00
Motor Vehicles	9,600,000.00
Furniture & Fixtures	5,000.00
Pre exp	10,000.00
Others	5,000.00
Working Capital	1,200,000.00
TOTAL	12,620,000.00

2.0 ORGANISATION FLOW CHART

SEISEN GLOBAL LOGISTICS LIMITED management is headed by Managing Director. Core management team comprises of 1 General Manager, 1 HR and Admin Manager, 1 Logistics Manager, 1 Chief Accountant and 2 Junior accounting clerks. Operational team headed by 3 operational managers and includes drivers and cleaners.

SEISEN GLOBAL LOGISTICS LIMITED

The organisation chart of the SEISEN GLOBAL LOGISTICS LIMITED is presented herein below:



Employees Distribution Summary

Employment	Foreign	Local	Total
Women	2	15	17
Men	8	120	128
TOTAL	10	135	145

3.0 TANZANIA TRANSPORT OVER VIEW

SEISEN GLOBAL LOGISTICS LIMITED

The Tanzanian transport sector comprises surface transport (including roads, railways), inland waterways (lakes and rivers), air transport, and sea transport.

Tanzania's transport sector contributed 8.1% to the country's real GDP in 2018 with USD 3.8 billion, compared to USD 2.8 billion in 2014, representing an increase of 33%.

Main growth drivers include the increase in the number of passengers carried and freight handled through road transport.

According to Tanzania's 2025 Development Vision, investments in infrastructure, particularly in the development of the road network, are the Government's top priority.

The World Bank (WB) and the African Development Bank (AfDB) support Tanzania in achieving its infrastructure development goals by providing grants and credits for projects.

Tanzania Road Transport

Road transport is the most widely used form of transport in Tanzania, carrying over 90% of the passengers and 75% of the freight traffic in the country.

The road network in Tanzania currently comprises 86,472 kilometers of roads, of which 12,786 kilometers are trunk roads,

SEISEN GLOBAL LOGISTICS LIMITED

21,105 kilometers are regional roads and the remaining 52,581 kilometers are district, urban and feeder roads.

Tanzania's Ministry of Works, Transport, and Communication through the Tanzania National Roads Agency (TANROADS) is managing the national road network of about 33,891 kilometers, comprising 12,786 kilometers of trunk and 21,105 kilometers of regional roads.

The remaining network of about 53,460 kilometers of urban, district and feeder roads is under the responsibility of the Prime Minister's Office Regional Administration and Local Government (PMO-RALG).

Tanzania Rail Transport

Railway transport is the second most important mode of transport after road and critical for long distance freight along the main transport corridors in Tanzania.

SEISEN GLOBAL LOGISTICS LIMITED

Tanzania has a total of 3,676 kilometers of railway lines operated by two railway systems, Tanzania Railways Corporation (TRC) and Tanzania – Zambia Railways (TAZARA).

The mainline of TRC comprises the central corridor between the port of Dar es Salaam in the east, linking central and western areas of the country and terminating at Kigoma on Lake Tanganyika in the west.

The TAZARA line is 1,860 kilometers in length, of which 975 kilometers is in Tanzania and 885 kilometers in Zambia.

Tanzania Air Transport

The total number of air passengers in Tanzania reached 6.2 million in 2019, compared to 5.2 million in 2015, representing an increase of 18%.

Currently (2020), there are 19 airline operators in Tanzania, including some of the leading international air carriers such as British Airways, KLM, Qatar Airways, and SWISS.

There are 58 airports in Tanzania and more than 300 private airstrips owned by mining companies and tour operators.

SEISEN GLOBAL LOGISTICS LIMITED

The Julius Nyerere International Airport (JNIA), located in Dar es Salaam, is the largest and busiest airport in Tanzania, accounting for over 70% of Tanzania's air passengers.

In August 2019, Tanzanian President John Magufuli inaugurated Terminal 3 of the JNIA. The new terminal, which cost USD 314 million set the airport capacity at 8 million passengers annually.

In 2019, the AfDB approved a USD 272.12 million loan to Tanzania for the construction of a new international airport in the capital Dodoma. The new airport will be built in the district of Msalato, 12 kilometers from the capital Dodoma.

The new facility is expected to handle at least 50,000 aircrafts and one million passengers per year.

Tanzania Water Transport

Tanzania has a coastline of about 720 kilometers on the Indian Ocean, and also borders Lake Victoria, Lake Nyasa, and Lake Tanganyika.

Both sea and inland waterways ports in Tanzania are managed and operated by the Tanzania Ports Authority (TPA).

SEISEN GLOBAL LOGISTICS LIMITED

The TPA's main Indian Ocean ports are Dar es Salaam, Mtwara, and Tanga. Minor seaports serving coastal traffic include Lindi, Kilwa Masoko, Mafia Island, Bagamoyo, Pangani, and Kwale.

Dar es Salaam is Tanzania's principal port with intrinsic capacity of 10.1 tonnes per year. The port handles over 92% of the total maritime ports' throughput.

The port serves land-linked countries of Malawi, Zambia, Democratic Republic of Congo, Rwanda, Burundi, and Uganda.

These countries are connected to the port through two railway systems (TRL-1.0 metre gauge and TAZARA-1.067 metre gauge), road network, as well as the TAZAMA oil pipeline to Zambia.

TPA also operates Tanzania's lake ports, maintaining around 20 ports on Lake Victoria. Some major ports include Bukoba, Kemono Bay, Musoma, and Nansio.

Principal lake ports on Tanganyika include Kigoma and Kasanga. Additionally, there are 15 smaller ports along the lake. These ports provide trade connections between Burundi, Eastern Democratic Republic of the Congo, and Zambia.

SEISEN GLOBAL LOGISTICS LIMITED

Lake Nyasa has 4 important ports, at Itungi, Mbamba Bay, Liuli, and Manda. There are up to 10 others smaller TPA ports on the lake that facilitate passenger movement along the lake and between the countries of Malawi, Mozambique, and Tanzania.

4.0 TANZANIAN BUSINESS ENVIRONMENT

In the African continent, TANZANIA is among the top ten investment destinations in Africa, thanks to reforms and a conducive investment environment set by the government.

The Rand Merchant Bank (RMB) ranked the country tenth in investment attractiveness, in the Where to Invest in Africa 2021 report released recently.

4.1 THE TANZANIA DEVELOPMENT CORRIDORS

Development of transport corridors has been one of the main strategies adopted by the Government of Tanzania to facilitate trade. Tanzania serves as a transit country for the import and export of Malawi, Zambia, DR Congo, Burundi, Rwanda and Uganda, using the port of Dar es Salaam. The main rail and road connections in Tanzania are, therefore, in an east-west direction, linking the ports with the hinterlands of those neighbouring countries. Tanzania is devoting much attention to the corridor concept in its development policy by concentrating efforts in the

SEISEN GLOBAL LOGISTICS LIMITED

Mtwara Corridor, Dar-es-Salaam Corridor, Central Corridor and the Tanga Corridor. The major challenge is to link import, export and transit traffic from and to neighbouring countries with transport development efforts, making Tanzania a natural regional hub.

The geography of Tanzania, including its size, diversity and dispersion, give roads a special position in the integration of the national economy. In particular, roads serve rural areas, where the majority of the people live, more effectively than any other mode of transport. The current Tanzania Road Network length is about 85,000 km, which includes trunk and regional roads (35,000 km) managed by the Tanzania National Roads Agency (TANROADS), and the urban, district and feeder roads with a total of 50,000 km, managed by Local Government Authorities (LGA). There are also some unclassified roads, such as those managed by the Tanzania National Parks Authority (TANAPA), and by the Mining Companies and village authorities.

5.0 SWOT ANALYSIS

5.1 STRENGTHS

Strengths of the business are –

SEISEN GLOBAL LOGISTICS LIMITED

- Promoters have sound experience in this business and have talented Management.
- Rapid growth in sector due to effective management
- Influence & Networking of Directors in the Business Sector.
- Business location is at prominent place.
- Good roads and highway in Tanzania.
- Confirmed business via agreement entered with few companies.

5.2 WEAKNESSES

Weakness of the business are –

- New entry in logistics market
- Stiff competition from local market
- Limited market share growth

5.3 OPPORTUNITIES

Opportunities of the business are –

- Potential market encourages foreign investors
- Increasing market share due to rail transport limitations
- Augmented demand for world –class logistics and warehousing services

SEISEN GLOBAL LOGISTICS LIMITED

- Increased use of logistics services in sectors such as technology, consumer retail, automotive and industrial

5.4 THREATS

Threats of the business are –

- Complex Tax Structure
- Unorganised sector and competition
- Different laws in different countries
- Increasing fuel rates therefore increasing transportation costs

6.0 SERVICES OFFERED BY SEISEN GLOBAL LOGISTICS LIMITED

SEISEN GLOBAL LOGISTICS LIMITED Management understands that your supply chain needs are unique and that's exactly why the company have engaged the best minds in the Transport industry to create specific transport solutions customized to suit your ever-changing cargo movement environment. SEISEN GLOBAL LOGISTICS LIMITED transport vans, trucks and trailers (closed body trailers, flat bed trailers, low loaders and tankers) from precision transport are designed to seamless execution, SEISEN GLOBAL LOGISTICS LIMITED dedicated cargo transportation professionals are engaged at every step of the

SEISEN GLOBAL LOGISTICS LIMITED

way to provide the services with the most accurate transport and economical transportation arrangement that the industry has to offer.

SEISEN GLOBAL LOGISTICS LIMITED Transportation and the company Customs Brokerage Service allow the company to complete the supply chain, cargo transit and offers truly door-to-door transportation service in the freight industry. The company optimized transportation translates to fast transit service and the door-to-door delivery of your freight on time, safely transported and damage free.

Transport integration with Customs Brokerage Service

- Allows SEISEN GLOBAL LOGISTICS LIMITED Transport Logistics to complete the supply chain and offer truly door-to-door transportation service in the market
- Eliminates unnecessary customs delays, transport dispatch and improves communication between the shipping line, Customs, Client and our transport department.
- Provides greater control, handling and security of your freight transportation
- Full range of freight forwarding services are offered, including customs clearance, warehousing, in-bond storage, transportation, etc.

SEISEN GLOBAL LOGISTICS LIMITED

- Customer receives a single itemized invoice for door-to-door transportation eliminating additional administrative requirements
- SEISEN GLOBAL LOGISTICS LIMITED Transport Logistics plan to customize and design transportation solutions to transport client's freight at the speed and ease. SEISEN GLOBAL LOGISTICS LIMITED Management has been in the transport logistics and our transport segment delivers freight to numerous customers spread across east Africa namely Tanzania, Uganda, Northern Tanzania, Burundi, Rwanda, Southern Sudan and DR Congo.
- SEISEN GLOBAL LOGISTICS LIMITED plan to combine the economy of rail transport with road transport handling for seamless door-to-door service and savings. The company transport network throughout Tanzania, Uganda, Northern Tanzania, Burundi, Rwanda, Southern Sudan and DR Congo and large transport trucks, closed body trailers, flat bed trailers and low loaders fleet are aligned to offer transport applications suitable for all transportation needs. Whether clients freight requires rail transport or road transportation service, door-to-door transport, coast-to-coast

SEISEN GLOBAL LOGISTICS LIMITED

transport, or cross-border transportation, SEISEN GLOBAL LOGISTICS LIMITED Transport Logistics is the solution.

Benefits of optimized door to door delivery and transportation

- SEISEN GLOBAL LOGISTICS LIMITED Transportation is dedicated to creating win-win solutions by investing talent, capital, and transport resources.
- Dynamic transport route optimization systems at client's disposal to create supply-chain door to door and reduce transport costs.
- The largest transportation truckload fleet and terminal network in the transport industry.
- Satellite tracking on our transport
- Modern fleet of transport trucks
- One of the Safest operating fleets in the transport industry
- Heavy and fragile equipment transported using air hydraulic low loaders.
- Door-to-door control of transport equipment = less handling, better security, and increased efficiency
- Fully multilingual experienced transport staff to cater all our transportation routes
- Strict requirements for transport department staff and constant integrity checks transport and delivery.

SEISEN GLOBAL LOGISTICS LIMITED

Container Transport Mode (Container on Flat Bed)

SEISEN GLOBAL LOGISTICS LIMITED Capital offers a complete door-to-door service for all of your container transport requirements. Our road transport fleet is comprised of 120 trucks and transportation trailers. The company plans to have the most modern container transport fleet in the transport industry and our container transport trucks are all equipped with satellite tracking, permitting real time tracking of your loads.

SEISEN GLOBAL LOGISTICS LIMITED Transport Logistics also supplement road transport fleet with our access to our East Africa railway transport line. SEISEN GLOBAL LOGISTICS LIMITED Transport Logistics is capable of transporting heavy and bulk cargo on Low Loader, rail and can also transport transit cargo on rail and low-loaders.

Heavy Haulage – Low-Loader Transportation

SEISEN GLOBAL LOGISTICS LIMITED transportation Low Loaders comprise of a variety of unique low loader trailer configurations, SEISEN GLOBAL LOGISTICS LIMITED Capital is still constantly engineering new low loader transport solutions for our customers' Low Loader Transportation requirements. SEISEN GLOBAL LOGISTICS LIMITED Transportation Logistics is rapidly becoming the preeminent low loader transport provider for

SEISEN GLOBAL LOGISTICS LIMITED

importers and exporters of many commodities, including earth transporting equipment and engineering structures that has to be transport on low loaders. Low loader as the industry's most dynamic carrier, SEISEN GLOBAL LOGISTICS LIMITED Transportation plans to expand our diverse portfolio of service-sensitive, specialty operations to meet our clients' low loaders needs.

Heavy Equipment Transport

Whether it is around town or interstate SEISEN GLOBAL LOGISTICS LIMITED Transportation has the low loaders and heavy transport equipment to transport any sized machines. We have low loader expertise required to transport, arrange all the permits, liaise with police, load and unload cranes.

Mining Equipment Transport

SEISEN GLOBAL LOGISTICS LIMITED Low loader transport offers transportation services for heavy equipment utilizing their low loader trailers and has experienced transporting a range of Mining equipment including Hitachi Excavators, Zoom Lion Cranes, Caterpillars and Komatsu Dump Trucks, concrete mixers, graders and bulldozers on low loaders.

SEISEN GLOBAL LOGISTICS LIMITED

Local cargo

SEISEN GLOBAL LOGISTICS LIMITED offers the fastest Local cargo service in Tanzania. This airport-to-airport service puts your cargo, envelopes and other packages on the first scheduled flight and delivers them to the recipient at the airport of arrival within one hour after the landing time. No advance reservations are required for this service.

Tanzanian Cargo provides around-the-clock Local cargo service with same-day delivery across Tanzania.

Transit Cargo

SEISEN GLOBAL LOGISTICS LIMITED strive to extend standard services across vast distances and through rough terrain all across East Africa. Our motivated staff and our expertise in the industry always keep us on schedule by rail and road.

SEISEN GLOBAL LOGISTICS LIMITED provide relocation and movement of both of bulk and containerized goods. SEISEN GLOBAL LOGISTICS LIMITED offer a variety of transport solutions, be it grouping or other transport services such as part and full load shipments by road, railways or a combination of two

7.0 **COMPETITION**

According to data available there are more than 15,000 trucks registered in Tanzania and SEISEN GLOBAL LOGISTICS LIMITED plan to compete favorably with local and foreign companies

8.0 FINANCIAL ASPECTS FOR THE PROJECT

(i) Projected Profit and Loss Statement

The attached Appendix I shows the projected income for the 8years period. The position depicted is that the project earns profit throughout its life. Accumulated after tax profits grow from. **US\$ 510,300** in the 1st year to **US\$ 27,162,434** in the 8th year.

(ii) Projected Cash Flows

The project's cash flows are shown in Appendix II. They depict a good liquid position right from the first year. Cash accumulation builds up from **US\$1,781,300** in the first year to **US\$ 35,170,434 at** the end of 8th years of the project's operations based on the 120 trucks and trailers obtained.

(iii) Projected Balance Sheet

The project's assets cash flows are shown in Appendix III. Owners' equity grows from **US\$6,620,000** in the first year to **US\$ 33,782,434** at the end of 8th years of the project's operations.

(iv) Payback Period

Total investment is **US\$12,620,000** cash accumulation in 4th year **US\$ 12,751,200**, which is more than the initial

SEISEN GLOBAL LOGISTICS LIMITED

investment, the project payback Period is exactly 4 years. The project has a relatively short payback period. It is remarkably impressive for a project whose investment is as big as **US\$12,620,000** is being recovered within 4years.

(v) Loan repayment

Total investment loan is **US\$6,000,000** to be repaid within 6 years.

9.0 **ECONOMIC ASPECTS OF THE PROJECTS**

Besides the financial/monetary returns to the owners, there are other benefits to be derived for the whole country viz.

(i) Employment Opportunities

Employment and poverty reduction are among the major concern of the Central and the Local Government authorities. It is gratifying to note that the company, is going to provide additional employment to 145 people. This is a significant contribution coming from foreign investors.

(ii) Revenue to the Government

The Project is expected to pay a substantial annual amount in the form of corporation tax and other taxes

(iii) Foreign Exchange Earning

Since the project's clientele is mostly towards neighbouring countries the project will thus earn foreign currency for the United Republic of Tanzania. Out of all project expected cargo overhauling transactions will be settled in foreign currencies. In this study we have assumed that the project will be paid in foreign currency

10.0 CONCLUSION

- (iv) The project is profitable and contributes to government revenue by way of taxes.
- (v) The project provides employment to 145 people.
- (vi) The project is an encouraging sign to prove that we have good business environments and we have investors who have confidence in their country. Tanzania so much so that they are ready to invest such large sums of investment despite the odds of the sector in question.

11.0 RECOMMENDATION

After the foregoing economic and financial evaluation of the project, we strongly recommend that this project be implemented and be given all the support required by all the concerned Government Ministries and Agencies, including the Tanzania

SEISEN GLOBAL LOGISTICS LIMITED

Revenue Authority, TRA and the Tanzania Investment Centre – (TIC). The project deserves this support because of its viability, since it is technical feasible, economically viable and socially acceptable.

SEISEN GLOBAL LOGISTICS LIMITED

APPENDIX I

SEISEN GLOBAL LOGISTICS LIMITED PROJECTED PROFIT AND LOSS STATEMENT US\$

	1	2	3	4	5	6	7	8
Revenue	8,000,000	16,000,000	24,000,000	25,200,000	26,460,000	27,783,000	29,172,150	30,630,758
Operating Expenses:	6,000,000	12,000,000	18,000,000	18,900,000	19,845,000	20,837,250	21,879,113	22,973,068
Profit before Depreciation & Interest	2,000,000	4,000,000	6,000,000	6,300,000	6,615,000	6,945,750	7,293,038	7,657,689
Interest	480,000	400,000	320,000	240,000	160,000	80,000	0	0
Depreciation	791,000	791,000	791,000	791,000	791,000	791,000	791,000	791,000
Gross Profit	729,000	2,809,000	4,889,000	5,269,000	5,664,000	6,074,750	6,502,038	6,866,689
Tax (30%)	218,700	842,700	1,466,700	1,580,700	1,699,200	1,822,425	1,950,611	2,060,007
Profit After Tax	510,300	1,966,300	3,422,300	3,688,300	3,964,800	4,252,325	4,551,426	4,806,683
Accumulated Profit	510,300	2,476,600	5,898,900	9,587,200	13,552,000	17,804,325	22,355,751	27,162,434

SEISEN GLOBAL LOGISTICS LIMITED

APPENDIX II

SEISEN GLOBAL LOGISTICS LIMITED PROJECTED CASH FLOWS US\$

SOURCES:		1	2	3	4	5	6	7	8
Profit before interest and depreciation	-	2,000,000	4,000,000	6,000,000	6,300,000	6,615,000	6,945,750	7,293,038	7,657,689
Equity	6,620,000								
Loan	6,000,000								
Total Sources	12,620,000	2,000,000	4,000,000	6,000,000	6,300,000	6,615,000	6,945,750	7,293,038	7,657,689
Applications:									
Capital expenditure	11,410,000	-	-	-	-	-			
working Capital & Others	1,210,000								
Cash	-	1,781,300	3,157,300	4,533,300	4,719,300	4,915,800	5,123,325	5,342,426	5,597,683
Tax	-	218,700	842,700	1,466,700	1,580,700	1,699,200	1822425	1950611.25	2060006.813
Sub total	12,620,000	2,000,000	4,000,000	6,000,000	6,300,000	6,615,000	6,945,750	7,293,038	7,657,689
Total applications	12,620,000	2,000,000	4,000,000	6,000,000	6,300,000	6,615,000	6,945,750	7,293,038	7,657,689
Accumulated cash		1,781,300	4,938,600	9,471,900	14,191,200	19,107,000	24,230,325	29,572,751	35,170,434

SEISEN GLOBAL LOGISTICS LIMITED

APPENDIX III

SEISEN GLOBAL LOGISTICS LIMITED PROJECTED BALANCE SHEET US\$

Fixed Assets	-	1	2	3	4	5	6	7	8
Opening balance	-	11,410,000	10,619,000	9,828,000	9,037,000	8,246,000	7,455,000	6,664,000	5,873,000
Total Long-term Assets	-	11,410,000	10,619,000	9,828,000	9,037,000	8,246,000	7,455,000	6,664,000	5,873,000
Less depreciation	-	791,000	791,000	791,000	791,000	791,000	791000	791000	791000
Closing balance	-	10,619,000	9,828,000	9,037,000	8,246,000	7,455,000	6,664,000	5,873,000	5,082,000
Working capital	1,210,000	1,210,000	1,210,000	1,210,000	1,210,000	1,210,000	1,210,000	1,210,000	1,210,000
Accumulated cash	-	1,781,300	4,938,600	9,471,900	14,191,200	19,107,000	24,230,325	29,572,751	35,170,434
Total assets	1,210,000	13,610,300	15,976,600	19,718,900	23,647,200	27,772,000	32,104,325	36,655,751	41,462,434
Financed by									
Equity	6,620,000	6,620,000	6,620,000	6,620,000	6,620,000	6,620,000	6,620,000	6,620,000	6,620,000
Accumulated profit	-	510,300	2,476,600	5,898,900	9,587,200	13,552,000	17,804,325	22,355,751	27,162,434
Total equity	6,620,000	7,130,300	9,096,600	12,518,900	16,207,200	20,172,000	24,424,325	28,975,751	33,782,434
Long term loan	6,000,000	5,000,000	4,000,000	3,000,000	2,000,000	1,000,000	-	0	0
Total debts	6,000,000	5,000,000	4,000,000	3,000,000	2,000,000	1,000,000	-	-	-
Total equity and debts	12,620,000	12,130,300	13,096,600	15,518,900	18,207,200	21,172,000	24,424,325	28,975,751	33,782,434

SEISEN GLOBAL LOGISTICS LIMITED

APPENDIX IV

SEISEN GLOBAL LOGISTICS LIMITED PROJECTED DEPRECIATION SCHEDULE

US\$

NAME OF ASSETS	1	2	3	4	5	6	7	8
Land And Buildings	400,000	392,000	384,000	376,000	368,000	360,000	352,000	344,000
Machinery, Tools & Equipment	1,400,000	1,386,000	1,372,000	1,358,000	1,344,000	1,330,000	1,316,000	1,302,000
Motor Vehicles	9,600,000	8,832,000	8,064,000	7,296,000	6,528,000	5,760,000	4,992,000	4,224,000
Furniture & Fixtures	10,000	9,000	8,000	7,000	6,000	5,000	4,000	3,000
Total	11,410,000	10,619,000	9,828,000	9,037,000	8,246,000	7,455,000	6,664,000	5,873,000
DEPRECIATION	1	2	3	4	5	6	7	8
Land and buildings	8,000	8,000	8,000	8,000	8,000	8,000	8,000	8,000
Machinery tools & Equipment	14,000	14,000	14,000	14,000	14,000	14,000	14,000	14,000
Motor Vehicles	768,000	768,000	768,000	768,000	768,000	768,000	768,000	768,000
Furniture & Fixtures	1,000	1,000	1,000	1,000	1,000	1,000	1,000	1,000
ANNUAL DEPRECIATION	791,000	791,000	791,000	791,000	791,000	791,000	791,000	791,000

SEISEN GLOBAL LOGISTICS LIMITED

APPENDIX V

SEISEN GLOBAL LOGISTICS LIMITED PROJECTED LONG TERM LOAN REPAYMENT

Year	principle	Loan Interest (8%)	Total Amount Paid	Loan Balance
1	1,000,000.00	480,000.00	1,480,000.00	6,000,000.00
2	1,000,000.00	400,000.00	1,400,000.00	5,000,000.00
3	1,000,000.00	320,000.00	1,320,000.00	4,000,000.00
4	1,000,000.00	240,000.00	1,240,000.00	3,000,000.00
5	1,000,000.00	160,000.00	1,160,000.00	2,000,000.00
6	1,000,000.00	80,000.00	1,080,000.00	1,000,000.00

SEISEN GLOBAL LOGISTICS LIMITED

APPENDIX VI

SEISEN GLOBAL LOGISTICS LIMITED PROJECTED PAYBACK PERIOD

Year	Profit After Tax	Depreciation	Total Cash Flow	Accumulated Cash Flow
1	510,300	791,000	1,301,300	1,301,300
2	1,966,300	791,000	2,757,300	4,058,600
3	3,422,300	791,000	4,213,300	8,271,900
4	3,688,300	791,000	4,479,300	12,751,200
5	3,964,800	791,000	4,755,800	17,507,000
6	4,252,325	791,000	5,043,325	22,550,325

