

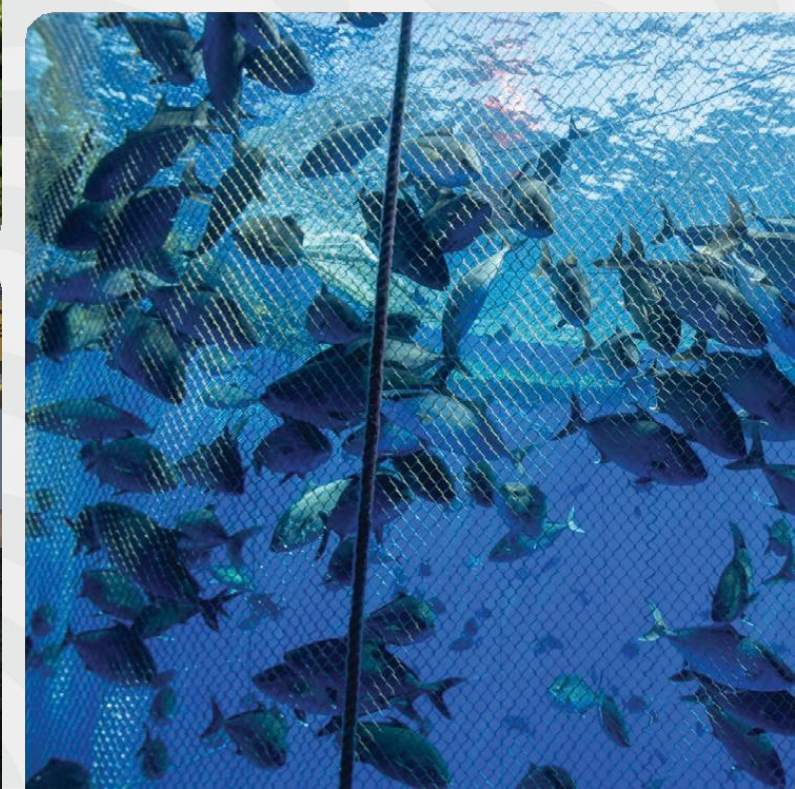
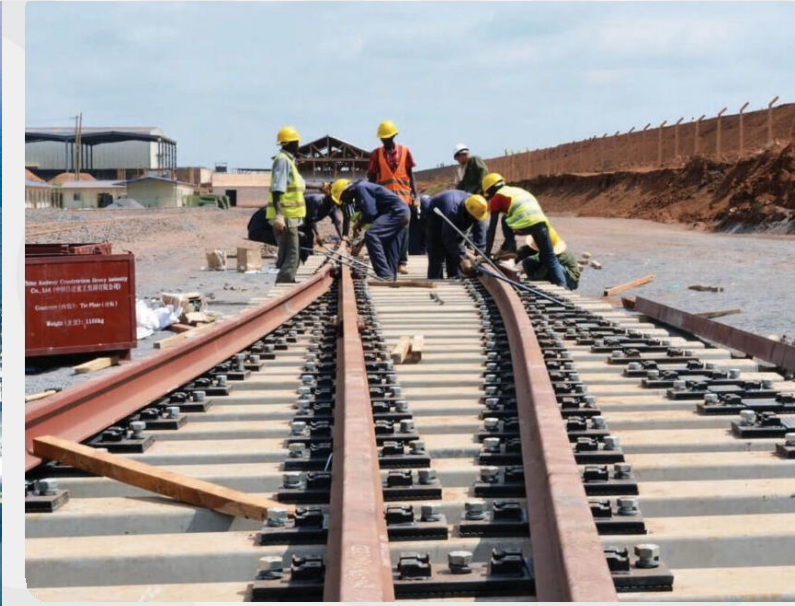
**INVEST IN
TANZANIA**



**PRESIDENT'S OFFICE
PLANNING AND
INVESTMENT**

**TANZANIA INVESTMENT AND SPECIAL
ECONOMIC ZONES AUTHORITY (TISEZA)**

AN OVERVIEW OF TANZANIA'S INVESTMENT CLIMATE AND OPPORTUNITIES



Main Focal Point For Investors

- The Tanzania Investment and Special Economic Zones Authority (TISEZA) is a newly established entity designed to streamline investment processes and attract both domestic and foreign investors.
- It was formed by Act No. 6 of 2025 and repealed the Tanzania Investment Act, 2022, the Export Processing Zones Act, 2002 and the Special Economic Zones Act, 2006;
- It consolidates the functions of the Tanzania Investment Centre (TIC) and the Export Processing Zones Authority (EPZA).
- It is responsible for coordinating, promoting and facilitating investments in Tanzania Mainland; Streamlining investment facilitation under the OSSC to simplify registration of investors, licensing, aftercare services; Providing for designation, development, management and operations of special economic zones; Developing a land bank for investment; etc



Why Invest In Tanzania?



**Peace & Political
Stability**



**Economic
Stability**



**Rich Natural
Resources**



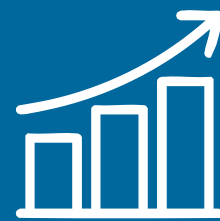
**Investment and
Export-Credit Guarantees**



**Strategic
Geographical Location**



**Access to Markets
FTA**



**Stable Fiscal and
Monetary Regime**



**Access to Affordable
Labour**



**Transparent
Investment Laws**



**Infrastructure
Developments**



**Strong Public-Private
Engagement**

Tanzania is the Base of Africa's most ACTIVE infrastructure Market



Power And Cost Efficiency



	TZ	ZNZ	KENYA	UGANDA	RWANDA	BURUNDI
	US¢/kWh	US¢/kWh	US¢/kWh	US¢/kWh	US¢/kWh	US¢/kWh
D1	4.35	6.79	13.62	6.88	9.70	4.7
T1	15.33	12.24	18.69	20.87	23.10	23.10
T2	12.79	10.57	18.48	15.98	14.60	17.3
T3MV	8.54	9.0	14.96	12.09	11.20	18.20
T3HV	6.65	9.0	13.78	9.77	10.20	12.40
ST. Light	-	-	11.35	10.18	20.6	-

INVESTMENT CATEGORIES

A

Normal Investors

Minimum Capital Requirement:

Foreign investors - **USD 500,000**

Local investors – **USD 50,000**

C

EPZ Investors

Foreign investors – **USD 500,000**

Local investors – **USD 100,000**

At least 80% of goods produced/processed should be for export. Investment inside SEZ Industrial Park or in Standalone

B

Strategic Investors

Minimum Capital Requirement:

Foreign investors - **USD 50M**

Local investors – **USD 20M**

D

SEZ Investors

Minimal Capital Requirement

Foreign investors – **USD 500,000**

Local investors – **USD 100,000**

Goods produced/processed should be for export or local market. Investment MUST be in SEZ Industrial Park

FISCAL INCENTIVES UNDER THE GENERAL INVESTMENT SCHEME

Exemption on Project Capital goods

- Zero Import Duty on capital goods.
- Zero Import Duty on raw materials

Capital Allowance

- Agriculture – 100%
- Mining - 20% (first 5 years)
- Hotels - 50%
- Fish farming – 50%
- Tourist services – 50%

Tax Relief on Deemed Capital Goods

- Import Duty exempted by 75%

Exemption on Project Capital goods

- Zero Import Duty on capital goods.
- Zero Import Duty on raw materials

Manufacturing of Pharmaceuticals, Textile or Leather products

- Reduced Corporate Tax to 20% for the first 5 consecutive years

Assembly of Motor vehicles, Tractors, Fishing boats or Out boat engine

- Reduced Corporate Tax to 10% for the First 5 consecutive years

Fiscal Incentives Under SEZ/EPZ Scheme

- Exemption from payment of corporate tax for the initial period of ten (10) years for EPZ licensee
- Exemption from payment of all levies imposed by Local Government Authorities (LGAs) for products produced in the EPZ for the initial period of ten (10) years;
- Exemption from VAT on goods and services directly related to production within the zone including utilities and wharfage charges (No time limit);
- Exemption from import duty on goods directly related to production in the zone (construction, machines, equipment, furniture, fixtures, certain vehicles as indicated in the EPZ Act) (No time limit)
- Exemption from tax on construction materials



OTHER NON-FISCAL INCENTIVES

01

AUTOMATIC IMMIGRATION QUOTA

Initially 10 expatriates during project implementation, and additional based on project size and other factors

02

LAND DERIVATIVE RIGHT

Foreigners have security of tenure under TIC Derivative Title for 98 years

03

ACCESS TO SERVICES UNDER THE ONE STOP FACILITATION CENTRE

All services are available under one roof

04

UNCONDITIONAL (FREE REPATRIATION) TRANSFERABILITY OF FUNDS

Transfer of funds is allowed through any authorized bank in freely convertible currency of: Net Profits, Repayment of Foreign Loans, Royalties, Fees Charges in Respect of Foreign Technology, etc.

05

ACCESS TO INTERNATIONAL ARBITRATION:

Tanzania is a Member of MIGA (Multilateral Investment Guarantee Agency) and The International Centre for Settlement of Investment Disputes (ICSID)

NON-FISCAL INCENTIVES FOR EPZ AND SEZ INVESTMENT SCHEMES

01

**Access to export
Credit guarantee
scheme**

02

Exemption from Pre-shipment Verification of Conformity (PVoC)

03

On-site customs inspection of goods in the EPZ and SEZ

04

Provisions of business visa at the point of entry to key technical, management and training staff for a maximum of two months.

05

Entitlement to an initial immigrant quota of up to five persons during the start-up period

GENERAL INVESTMENT OPPORTUNITIES



Agriculture and Agro-Processing



Livestock



Fishing and Aquaculture



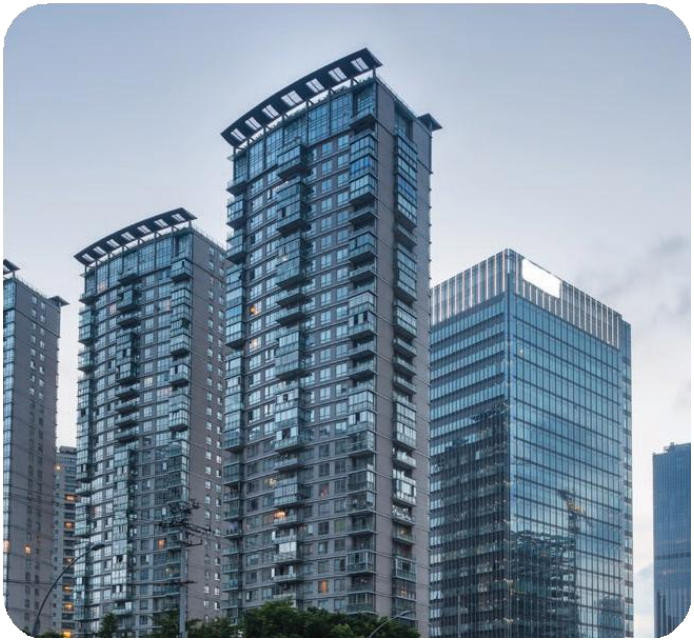
Manufacturing



Pharmaceuticals



Tourism



Real-Estate



Energy



Mining and Metals

SEZ and EPZ Opportunities

- Agriculture and Agro –Industrial
- Manufacturing
- Commercial
- Tourism
- Forestry
- ICT Parks
- Banking and Financial Centers
- Textile and Garments
- Agro Processing
- Leather Processing and Manufacture of Leather Products
- Lapidary (Diamond, Gemstone etc)
- Wood Products
- Electronic Appliances
- Pharmaceutical



SEZ INVESTOR PACKAGE

KEY INVESTMENT INCENTIVES PACKAGE FOR PROJECTS PER MARKET SEGMENT

Projects Targeting Local and EAC Markets

- Free project land;
- Plant and Machinery VAT and duty free;
- Raw materials duty free;
- Goods of Capital Nature may enjoy 75% reduction in duty
- Pre-fabricated factory buildings-75% reduction in duty;
- Distribution truck tractors-75% reduction in duty;
- Building permits issued within 24 Hours;
- All licenses and permits to be procured hassle free at TISEZA Premier investors' service centre;
- TISEZA Regional market access support to connect investors with buyers and distributors in EAC and SADC countries; and
- TISEZA officers stationed at all Regional and main ports of exit to facilitate cross boarder transit processes

Projects Targeting SADC, AfCFTA, International -US, Europe, Asia etc.

- Free project land;
- Plant and Machinery VAT and duty free;
- Raw materials duty and VAT free;
- 10 years Corporate Income Tax exemption;
- VAT and Import duty exemption on Goods of Capital Nature;
- VAT and import duty exemption on pre-fabricated Factory Buildings;
- VAT and import duty exemption on specialized utility vehicles specific to project;
- VAT exemption on services and utilities including electricity, water, port handling etc;
- Withholding tax exemption on services, dividends and interest on foreign bank loans;
- Building permits issued within 24 Hours;
- All licenses and permits to be procured hassle free at TISEZA Premier investors' service centre;
- TISEZA market access support by connecting with buyers and distributors globally;
- TISEZA officers stationed at all Regional and main ports of exit to facilitate cross boarder transit processes

KEY APPLICATION CRITERIA

01

Local content requirement of at least 30% Tanzanian ownership

02

Optimised land use limited to a maximum of one (1) Acre per factory

03

Commencement of factory operations within 12 months period

04

Minimum Investment commitment of at least \$10 million USD with 25% advance capital deposit in a local bank for foreigners

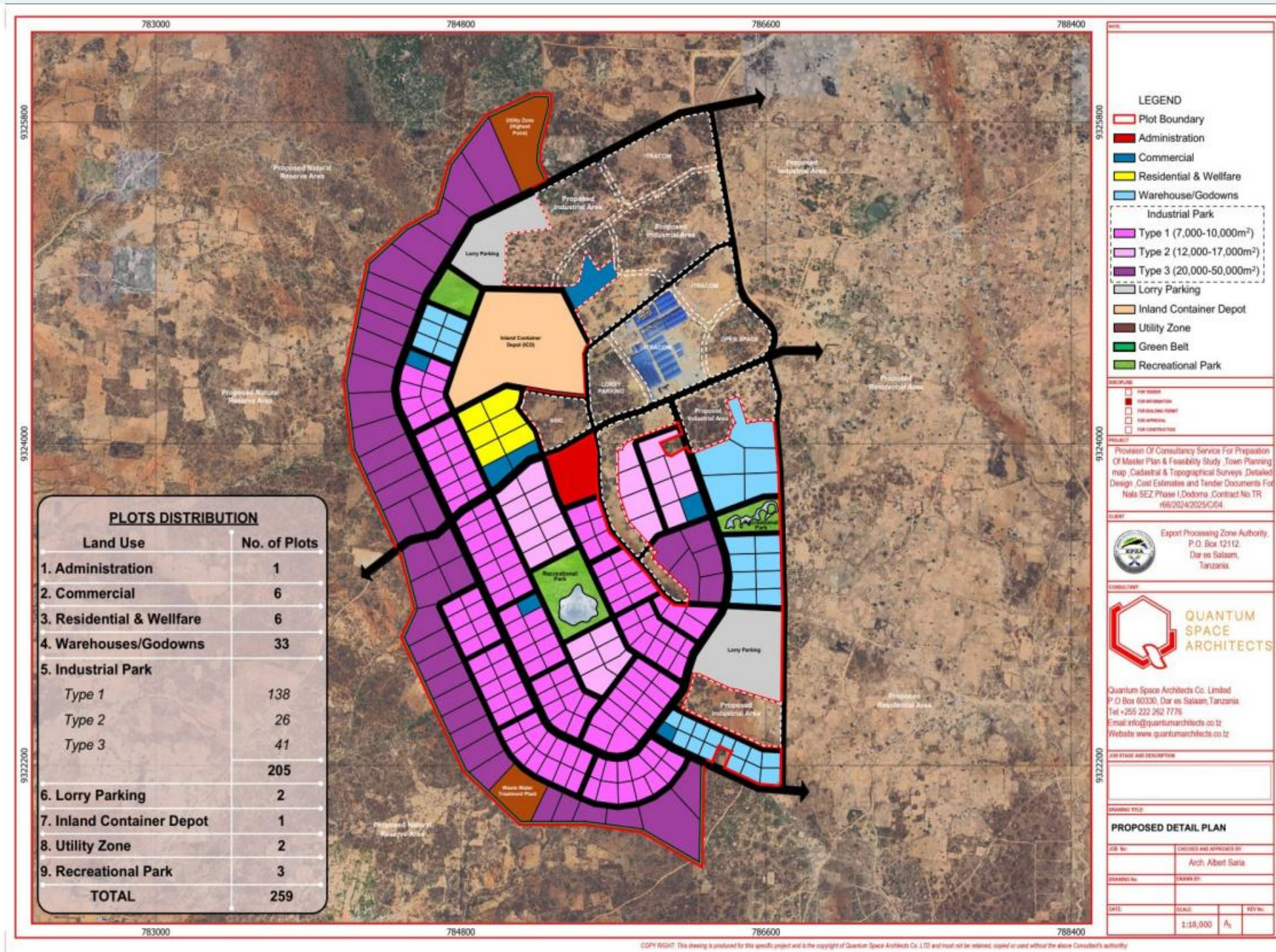
05

Minimum Investment commitment of at least \$ 5 million USD with 25% advance capital deposit in a local bank for Tanzanian

06

Employment creation target of at least 100 direct payroll jobs

NALA SEZ



NALA SEZ LAYOUT MAP

ABOUT NALA

Size & Location: 607 ha in Nala Ward, 21 km NW of Dodoma City

Advantages: Close to government institutions, reliable transport, and growing infrastructure

Connectivity:

Near Standard Gauge Railway (<10 km)

Modern Dodoma Airport (domestic) & Msalato International Airport (opening soon)

Road & SGR links to Dar es Salaam and Central Corridor

Market Access:

Zambia & Malawi via Tunduma

DRC via Kigoma Port

Rwanda & Burundi via Rusumo/Kobero

Kenya via Arusha–Namanga

Mozambique via southern Tanzania

Strategic Position: Gateway for trade across East & Southern Africa

Key Sectors :-

Agriculture value addition

Fast-Moving Consumer Goods (FMCG)

Textiles and clothing

Pharmaceuticals

Motor vehicle manufacturing and assembly, & Motor vehicle spare parts

Paper products and packaging materials

Rubber and rubber products

Engine assembly (vehicles, boats, tractors, motorcycles)

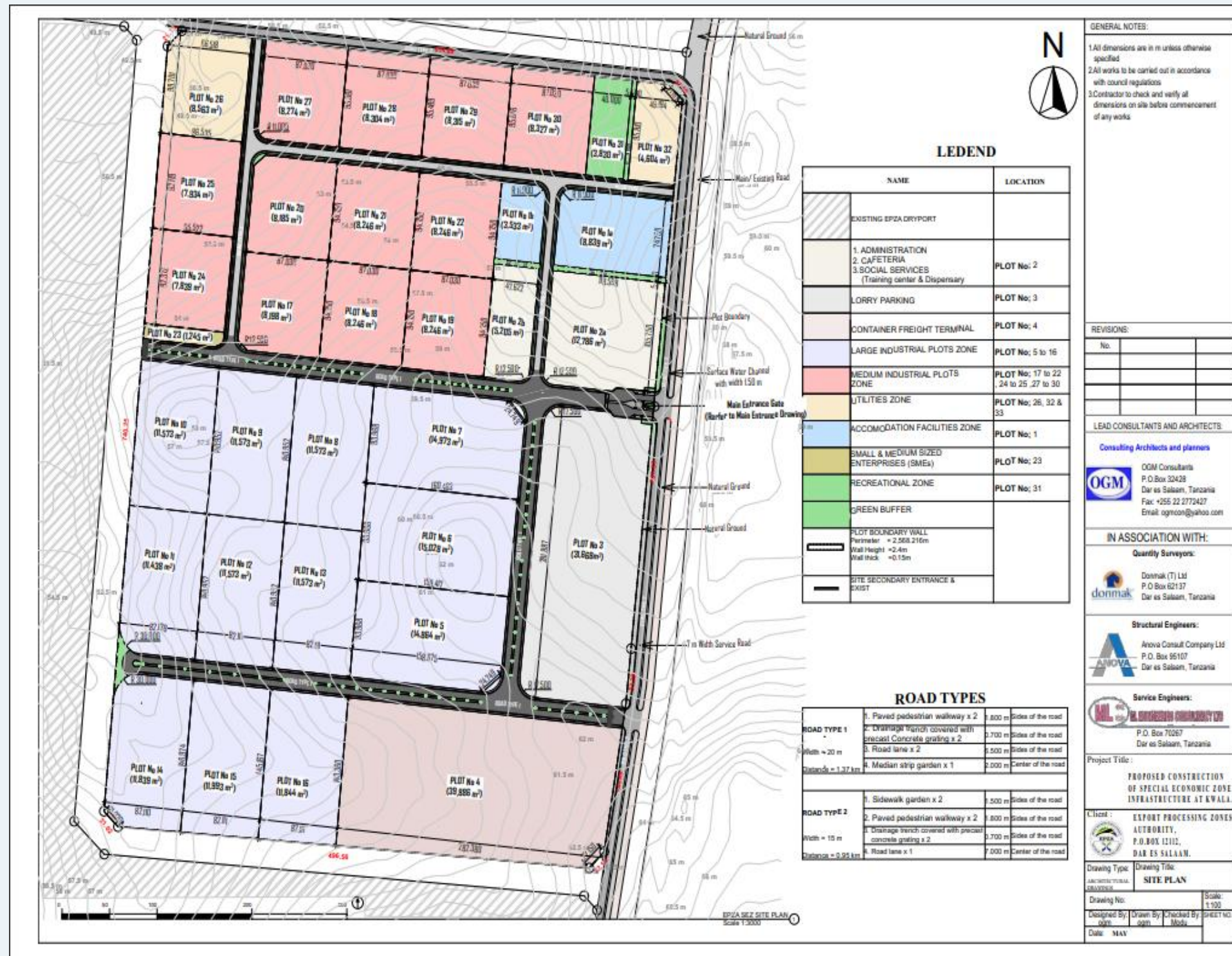
Simple machinery

Solar panels, batteries, and green technologies

Household appliances and electronics

Wood products, furniture, and building materials

KWALA SEZ



KWALA SEZ LAYOUT MAP

Size & Location: 100 ha in Kibaha, Coastal Region

Strategic Position: Borders Kwala Dry Port

Connectivity:

Linked to Dar es Salaam Port via **Standard Gauge & Meter Gauge Railway**

Tanzam/Dar–Morogoro Highway road access

Serves landlocked neighbours: **Uganda, Rwanda, DRC, Zambia, Malawi**

Purpose: Decongest Dar es Salaam Port & boost regional trade

Ideal for: Agro-processing, FMCG, diverse manufacturing & green technologies

Key Investment Sectors:

Agriculture value addition

FMCG

Textiles & clothing

Pharmaceuticals

Motor vehicle manufacturing & assembly

Motor vehicle spare parts

Paper & packaging

Rubber products

Engine assembly (vehicles, boats, tractors, motorcycles)

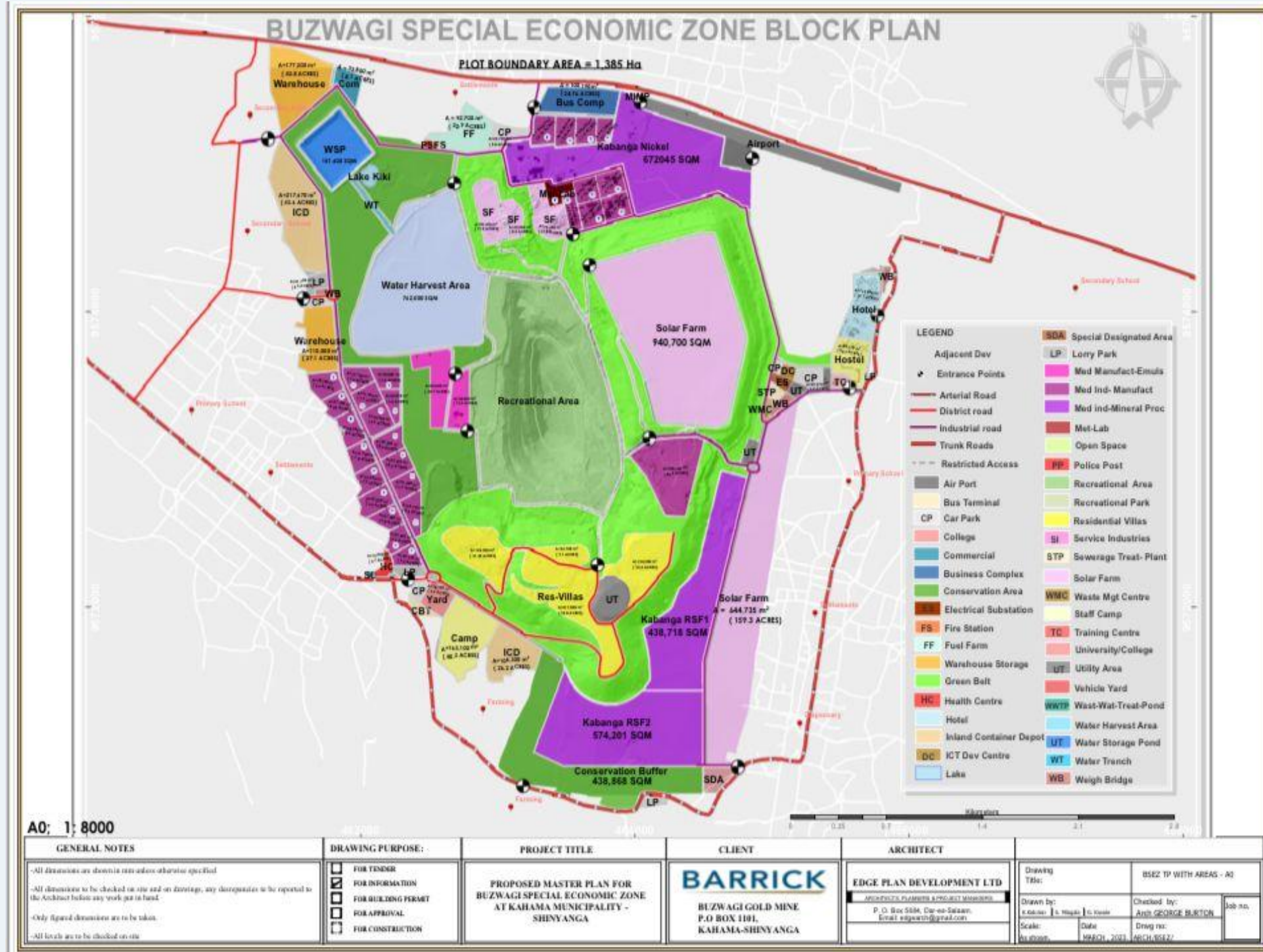
Simple machinery manufacturing

Solar panels, batteries, green tech

Household appliances & electronics

Wood products, furniture, building materials

BUZWAGI SEZ



BUZWAGI SEZ LAYOUT MAP

Location: 1,333 ha, former Buzwagi Gold Mine site, Kahama, Shinyanga

Connectivity:

30 km to Isaka Dry Port | 260 km to Mwanza Airport
 Highway to Dar es Salaam Port | Own airport (1.5 km runway, 250 pax terminal, VVIP lounge)
 25 km to railway (SGR & MGR) connecting to TAZARA

Infrastructure:

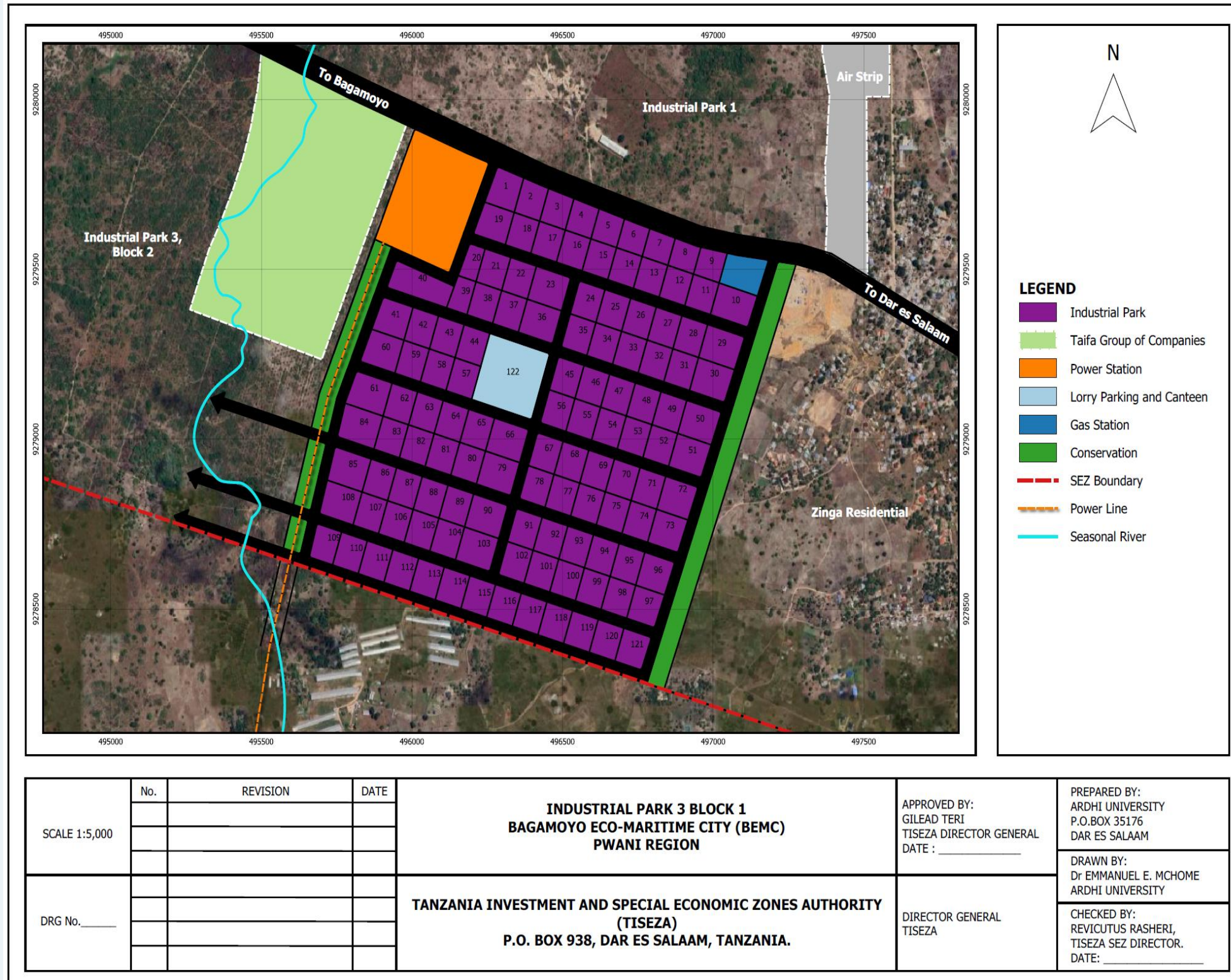
60 MW power substation | 3M liters water reserve
 Fully serviced accommodation & admin offices
 17 km concrete perimeter wall – high security

Trade Gateway: Links Tanzania with DRC, Rwanda, Burundi, Uganda

Target Sectors:

Mineral value addition
 Manufacturing (Agro & livestock processing, motor vehicles)
 Renewable energy

BAGAMOYO ECO MARITIME CITY (BEMC) SEZ



Size & Location: 151 ha in Zinga, Bagamoyo (Industrial Park 3, Block 1 – 134 plots)

Proximity: 45 km from Dar es Salaam Port
Access via **Bagamoyo Highway (tarmac road)**
Close to future **Mbegani–Bagamoyo Port** (under development)

Connectivity:
Linked to proposed power substation & gas station
Adjacent to proposed railway linking Bagamoyo Port to Central Railway Line (**SGR & MGR**) and **TAZARA**

Allocated Sectors:
Textiles
Pharmaceuticals
Automotive
Regional Headquarters Offices

BEMC SEZ LAYOUT MAP

BENJAMIN WILLIAM MKAPA (BWM) SEZ (EXPANSION)



BWM SEZ LAYOUT MAP

Size of Area of Expansion : 13,000 SQM

Renovations and Expansion of BWM to establish :-

1. Local SMEs Export Support Centre Including Machinery and Raw Material Sourcing

SPECIAL ECONOMIC ZONES (SEZ) AVAILABLE

01
BWM SEZ –
Dar es Salaam

02
BEMC SEZ -
Bagamoyo

03
Nala SEZ -
Dodoma

04
Kwala SEZ -
Kibaha

05
Buzwagi SEZ -
Shinyanga

06
Bunda SEZ -
Mara

07
Mererani SEZ -
Manyara

08
Tanga SEZ -
Tanga

09
Ruvuma -
SEZ

10
Kigoma SEZ
- Dodoma



TANZANIA INVESTMENT AND SPECIAL ECONOMIC ZONES AUTHORITY (TISEZA)

**Tanzania Investment and Special
Economic Zones Authority (TISEZA)**

P.O. Box 938, Dar Es Salaam

Tel: +255 22 2 116 328-32

Fax: +255 22 2118253

✉ info@tiseza.go.tz

🌐 www.tiseza.go.tz

📱 [f](#) [in](#) [t](#) [@](#) [v](#) @tiseza