



**Reach Mining
Tz Limited**

Integrated Quarry & Aggregate Production Project

Location : Pongwe Village, Chalinze District
Pwani Region, Tanzania

Presented by
Reach Mining TZ Limited



Core Mining Focus Areas

Reach Mining operates across multiple mineral sectors:



Iron Ore Mining

From resource modeling to pit to port delivery, we extract high grade ore with rigorous quality control. Optimized haulage and blending ensure steady supply for steelmakers year-round.



Graphite and Manganese Mining

Battery- and alloy-grade outputs delivered through selective mining, ore sorting, and Meticulous beneficiation. Traceability and sustainability are built into every step.



Gold Mining

Data-led targeting, safe underground/open-pit operations, and efficient recovery circuits maximize ounces while reducing dilution and environmental footprint.



Stone and Aggregate Mining

High-volume, spec-compliant aggregates produced through modular crushing lines. Reliable grading, low variability, and on time dispatch for infrastructure and construction.



Coal and Lignite Projects

Selective mining, dragline/dozer excavator combinations, and in-pit crushing & conveying to raise productivity and lower cost per tonne safely and responsibly.



Sand & Minor Mineral Dredging

Rapid-deploy dredging with precision bathymetry, minimal turbidity, and strict compliance. We restore profiles and maintain navigability without disrupting ecosystems.

These operations support both industrial production and infrastructure development.

Technical Capabilities



Reach Mining utilizes advanced mining technologies including:



Geological & geophysical surveys



GIS-based Exploration



UAV drone mapping



Digital Mine Planning Systems



Environmental Compliance & Sustainability

Environmental management is a key component of the company's operations.

Key initiatives include:



Environmental Monitoring Systems



Biodiversity Protection Programs



Land Rehabilitation Strategies



Responsible tailings and waste management

These measures ensure sustainable mining practices and ecological preservation.



Operational Strengths

Reach Mining's strengths include:



Technology-driven Operations

Use of digital mine planning and advanced geological tools.



Experienced Workforce

Highly skilled engineers, geologists and field specialists.



Integrated Operations

Mining, processing and logistics operations under one system.



Project Introduction

The proposed quarry project aims to develop a large-scale aggregate production facility in Pongwe, Chalinze District

The project will produce high-quality construction aggregates to support





Project Location

Location details:

Street: Nobola

Village: Pongwe

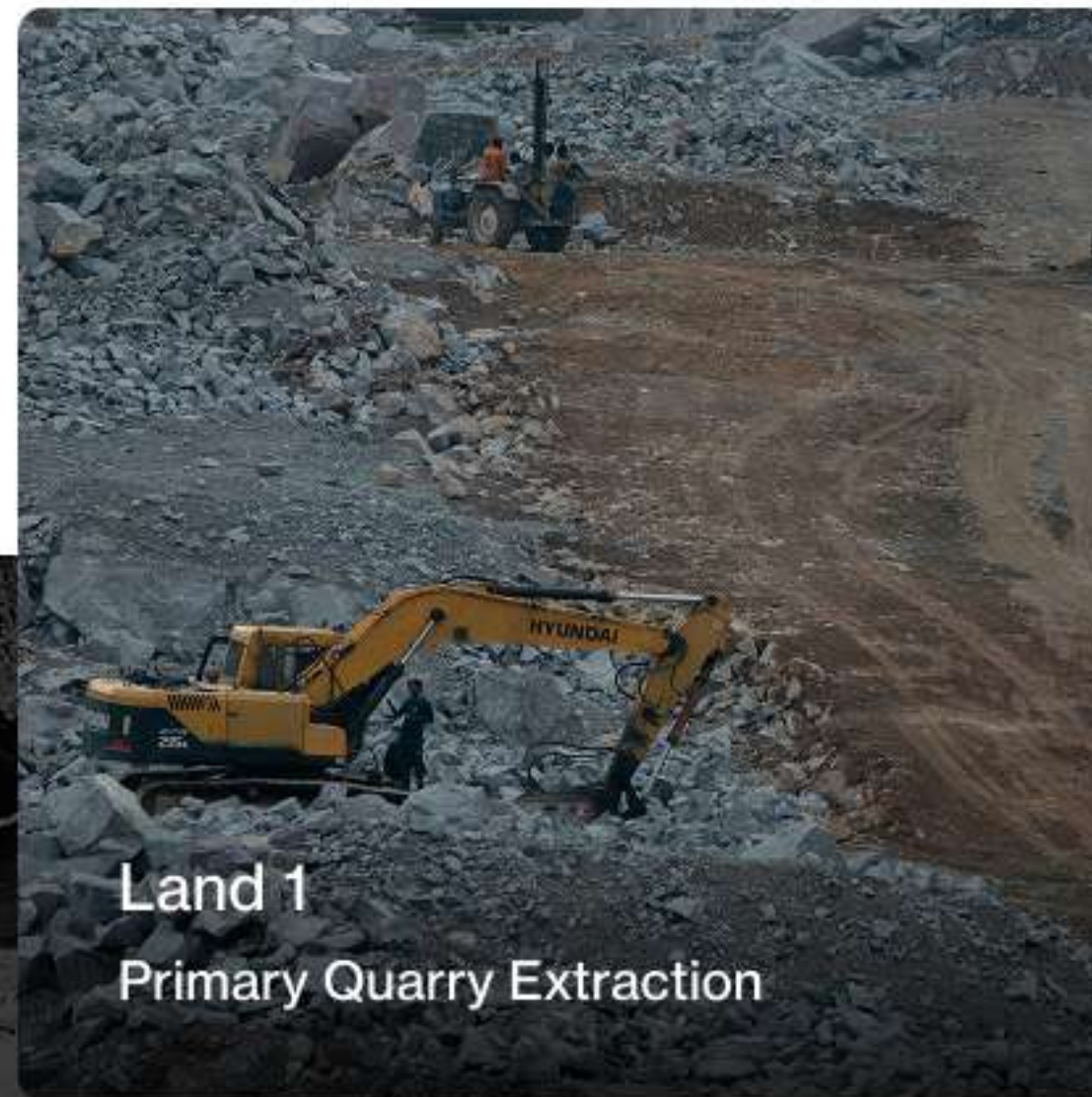
District: Chalinze

Region: Pwani

The location provides access to significant stone deposits suitable for quarry mining

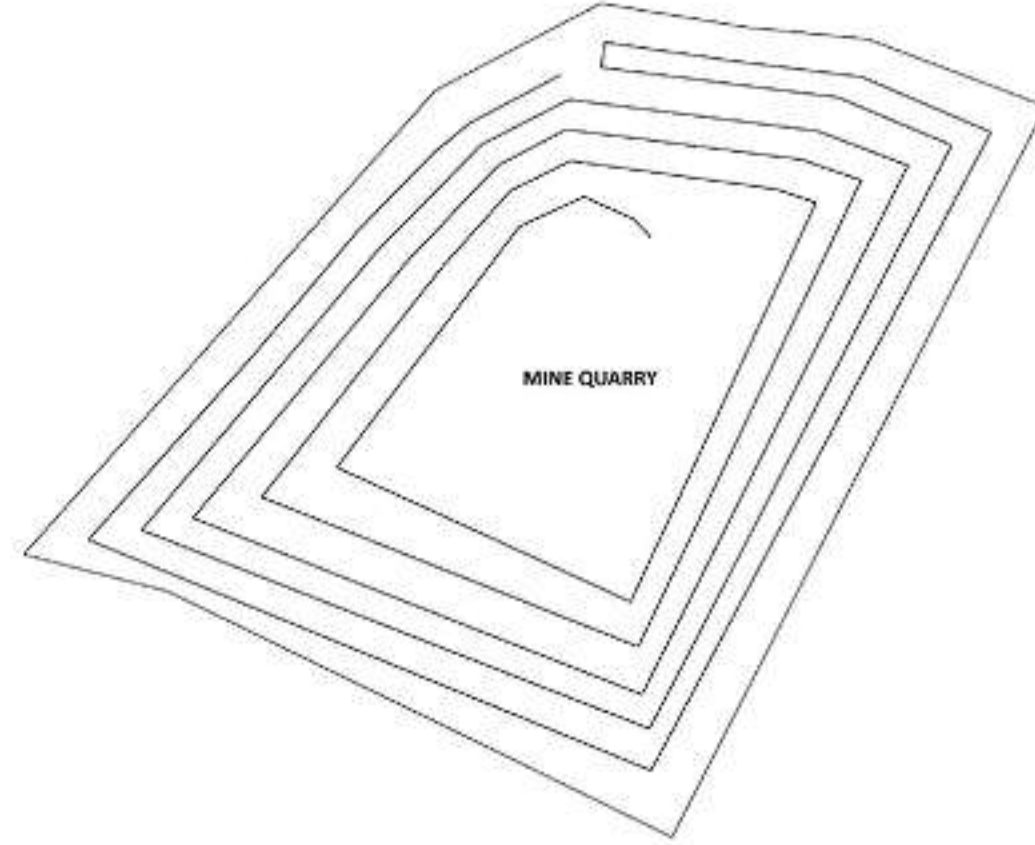
Site Development Overview

The project area is divided into three operational zones:

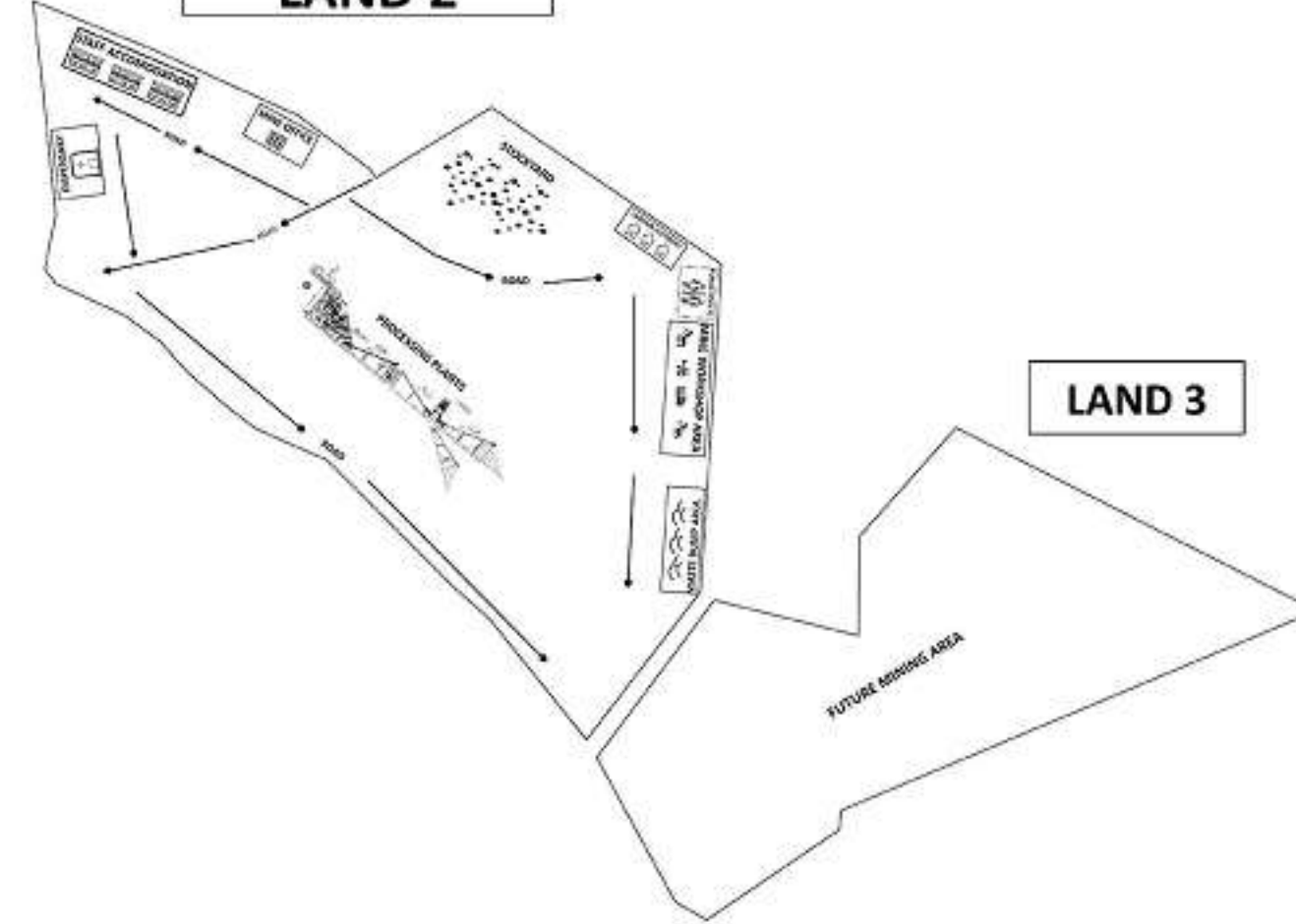


This layout ensures efficient extraction and long-term sustainability

MINE QUARRY (LAND 1)

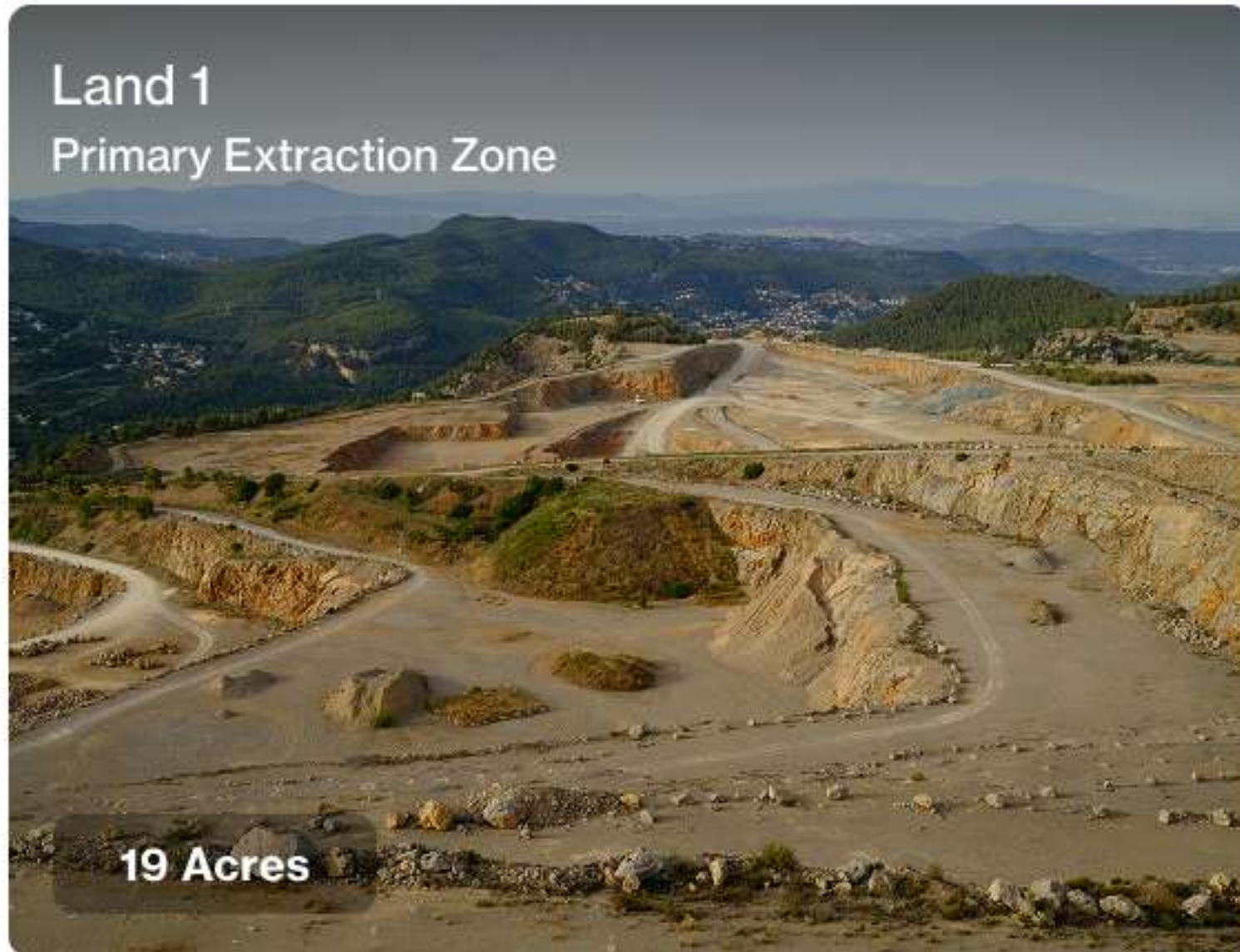


LAND 2



Land Allocation Summary

Land 1
Primary Extraction Zone

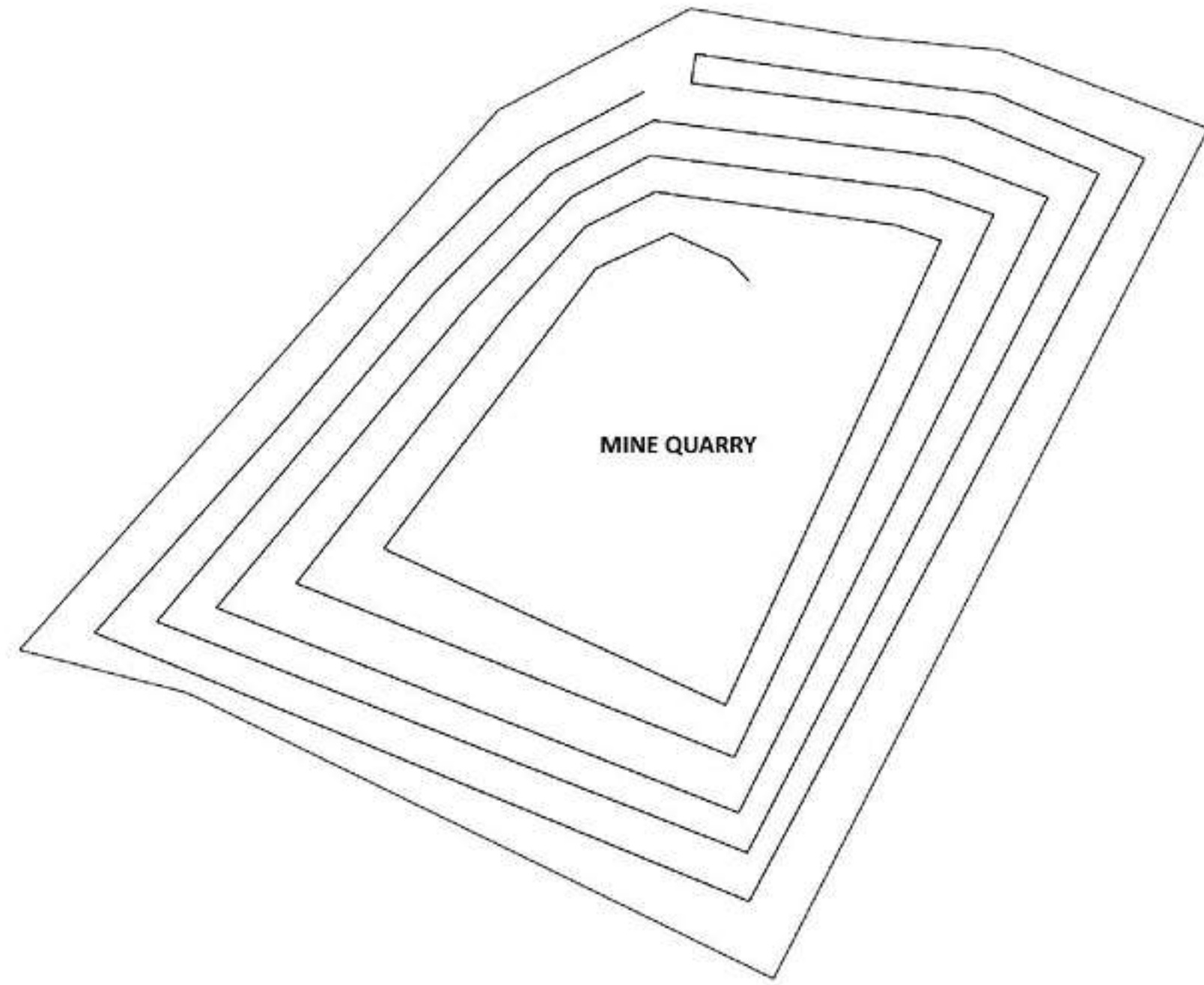


Land 2
Processing & Industrial Operations



Land 3
Future Mining Reserve





Land 1: Quarry Extraction Zone

Purpose

Primary extraction of stone resources.

Geological Value:

This site contains the abundant stone exposure.

Development:

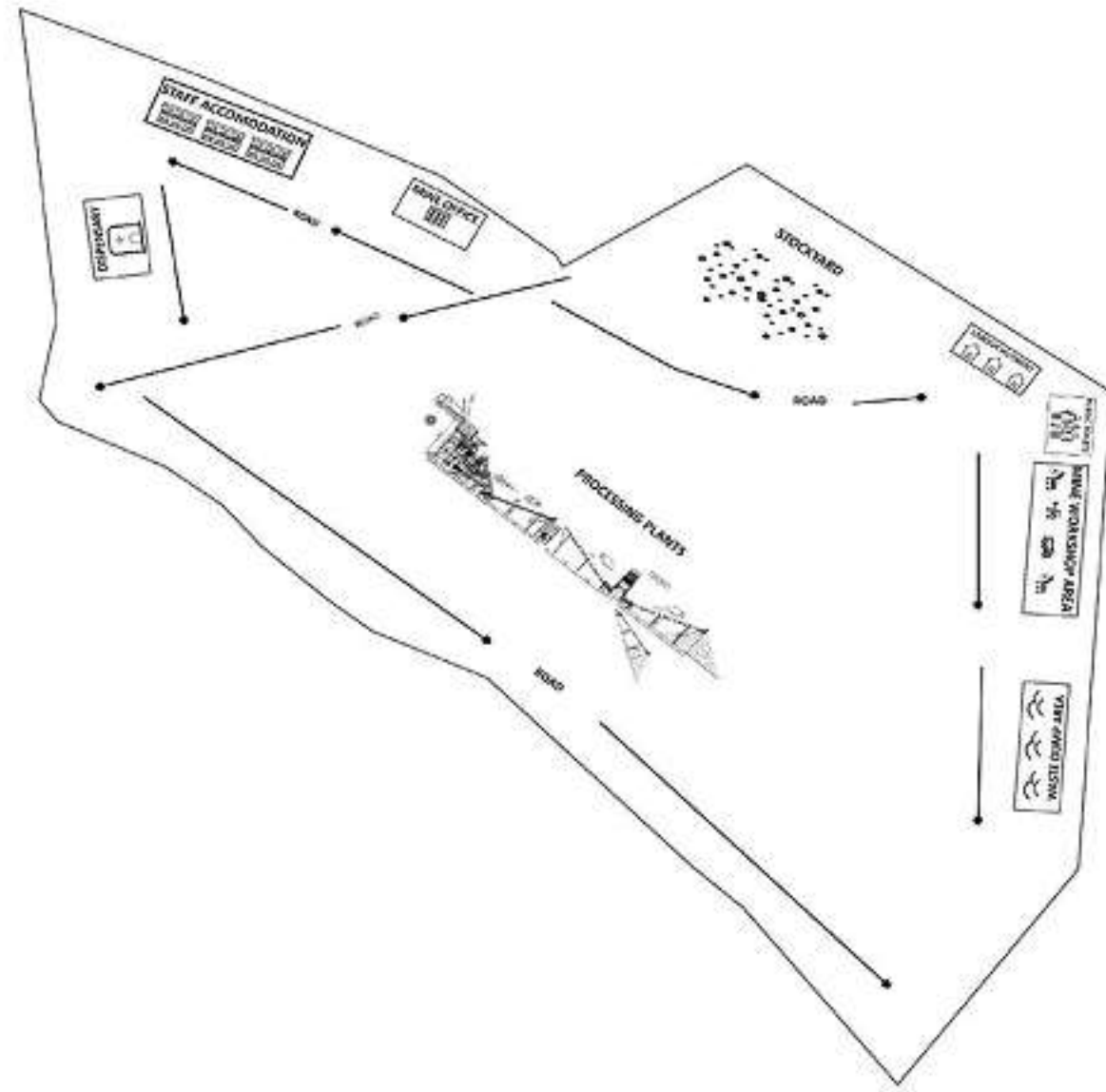
Systematic benching and pit development to ensure safe extraction and environmental compliance.

Activities Include:



Bench development ensures safe quarry operations.

Land 2: Operational Hub



Operational Hub & Processing Center

Purpose

Industrial Processing, Logistics & Staff Welfare

Geological Value:

Positioned centrally to serve as the bridge between Land 1 and Land 3.

Infrastructure Utility

Processing Plant:

Installation of the full machinery line (Hopper, Jaw Crusher, Cone Crusher, and Screens).

Dispensary:

To provide immediate medical attention and emergency stabilization for onsite injuries.

Stockyard:

Large-scale storage for various aggregate sizes (e.g., 0-5mm, 5-10mm, 20mm+) ready for market dispatch.

Labour Hutment:

To provide safe, dignified, and weather-proof accommodation for workers.

Maintenance Workshop

For the repair and upkeep of the machinery set and heavy earthmoving equipment.

Public Toilets

To maintain site hygiene and prevent environmental contamination.

Staff Quarters:

Secure housing and administrative offices for engineers, operators, and security personnel.

Waste Dump:

Systematic disposal of operational and domestic waste

Internal Road Network:

Designed for heavy-duty truck movement to prevent traffic congestion.



Introduction Reach Mining TZ Limited

Reach Mining TZ Limited is a registered company in the United Republic of Tanzania. The company has been established with the objective of exploring and developing mining and related industrial opportunities within Tanzania.

The company aims to contribute to the country's economic development by investing in the mining sector, creating employment opportunities for local communities, and supporting infrastructure development. Reach Mining TZ Limited is committed to operating responsibly while supporting the growth of Tanzania's industrial and economic landscape.



Workforce Infrastructure

Facilities for workforce welfare include:





Operational Procedure: From Extraction to Stockpile

The mining operation follows a systematic flow to ensure the Run of Mine (ROM) is converted into high-quality construction aggregate.

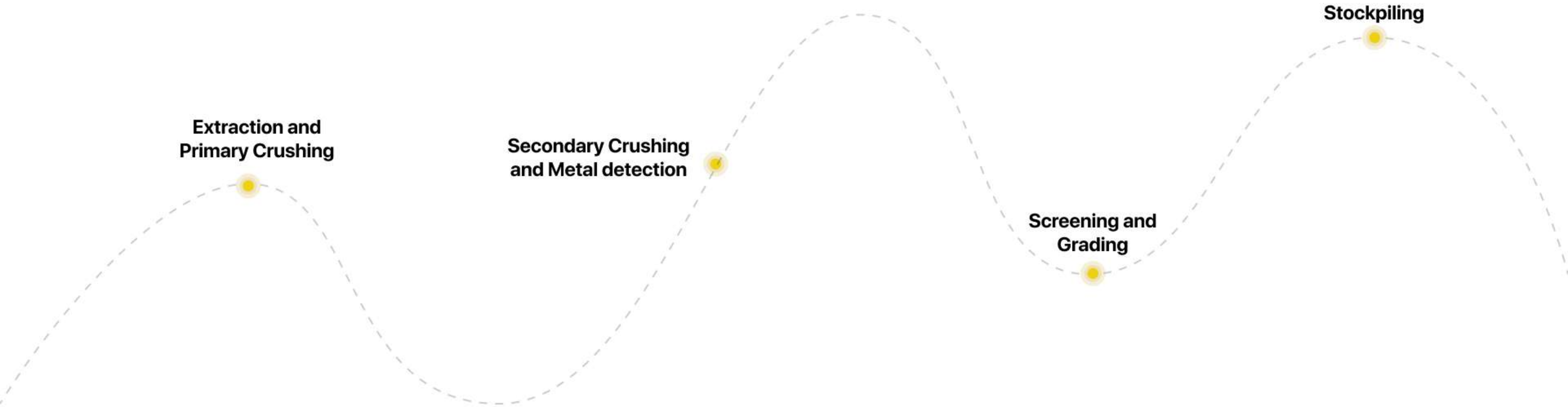
Additional facilities include:

- Internal Truck Road Network
- Waste Management Areas
- Equipment Maintenance Workshop

These facilities ensure smooth operational logistics.

Production Process Overview

The mining operation converts raw stone into graded aggregates through the following stages:



Extraction & Primary Crushing

Stone is extracted from Land 1 and transported to the processing facility.

Source:

Raw stone (ROM) is blasted and loaded from Land 1.

Feeding:

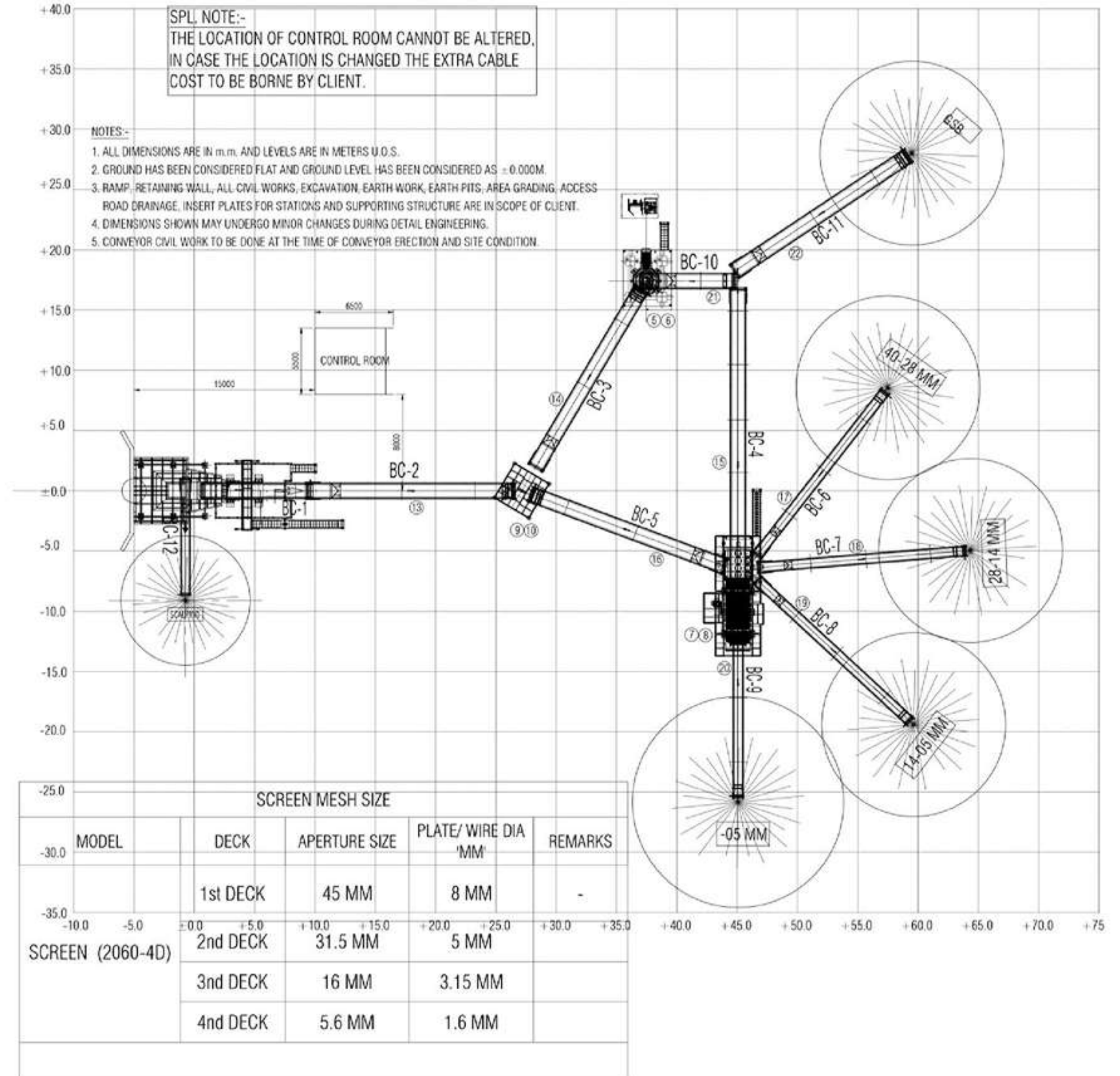
Material is transported to Land 2 and dumped into the 40 CUM Hopper.

Grizzly Feeder:

This separates undersized material (fines) before it hits the crusher, preventing unnecessary wear.

Jaw Crusher:

Acts as the primary crusher, breaking large boulders down to manageable sizes.



Secondary Crushing & Metal Detection

The material moves through belt conveyors and passes a metal detector.

Conveyance:

The material moves via Belt Conveyors past a Metal Detector to protect the secondary crushers from tramp iron.

Cone Crusher:

This provides the secondary stage of crushing, utilizing high pressure to achieve the desired cubicity and size of the stone.



Screening & Grading

Crushed material is sent to a 4-deck vibrating screen. The screen separates materials into different aggregate sizes. Oversized material is recirculated for further crushing.

Vibrating Screen (4D):

The crushed stone is sent to a 4-deck vibrating screen.

Sizing:

The screen separates the material into different sizes (e.g., 0-5mm, 5-10mm, 10-20mm).

Recirculation:

Oversized material is sent back via a return conveyor to the Cone Crusher for re-processing.



Stockpiling

Belt Conveyors:

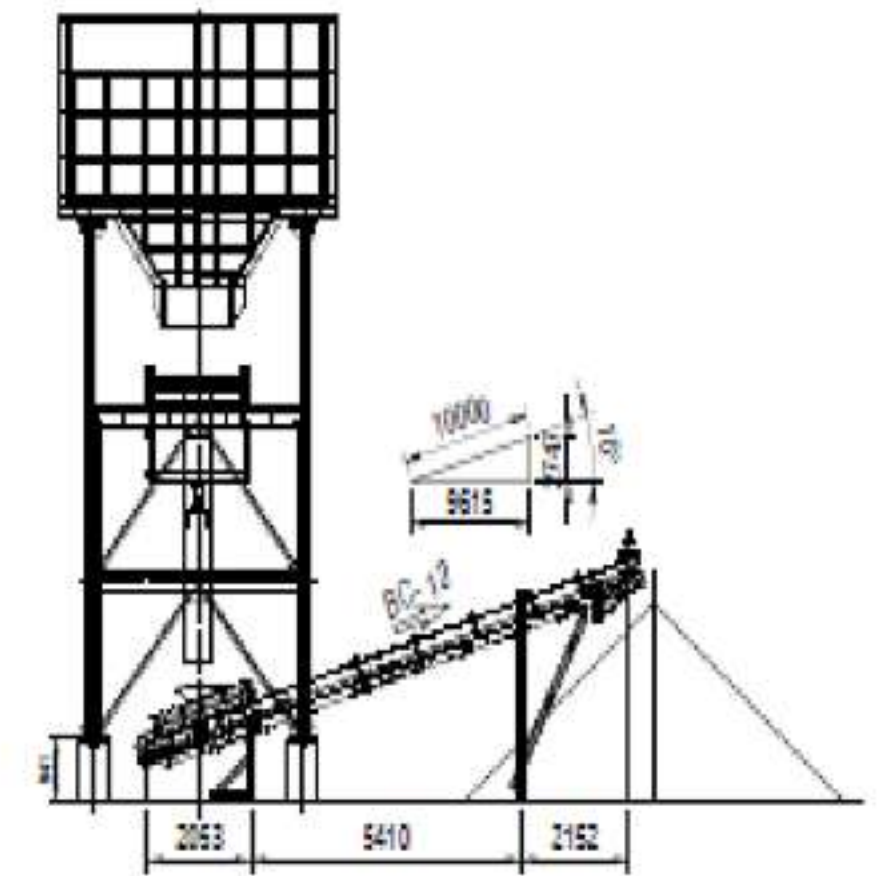
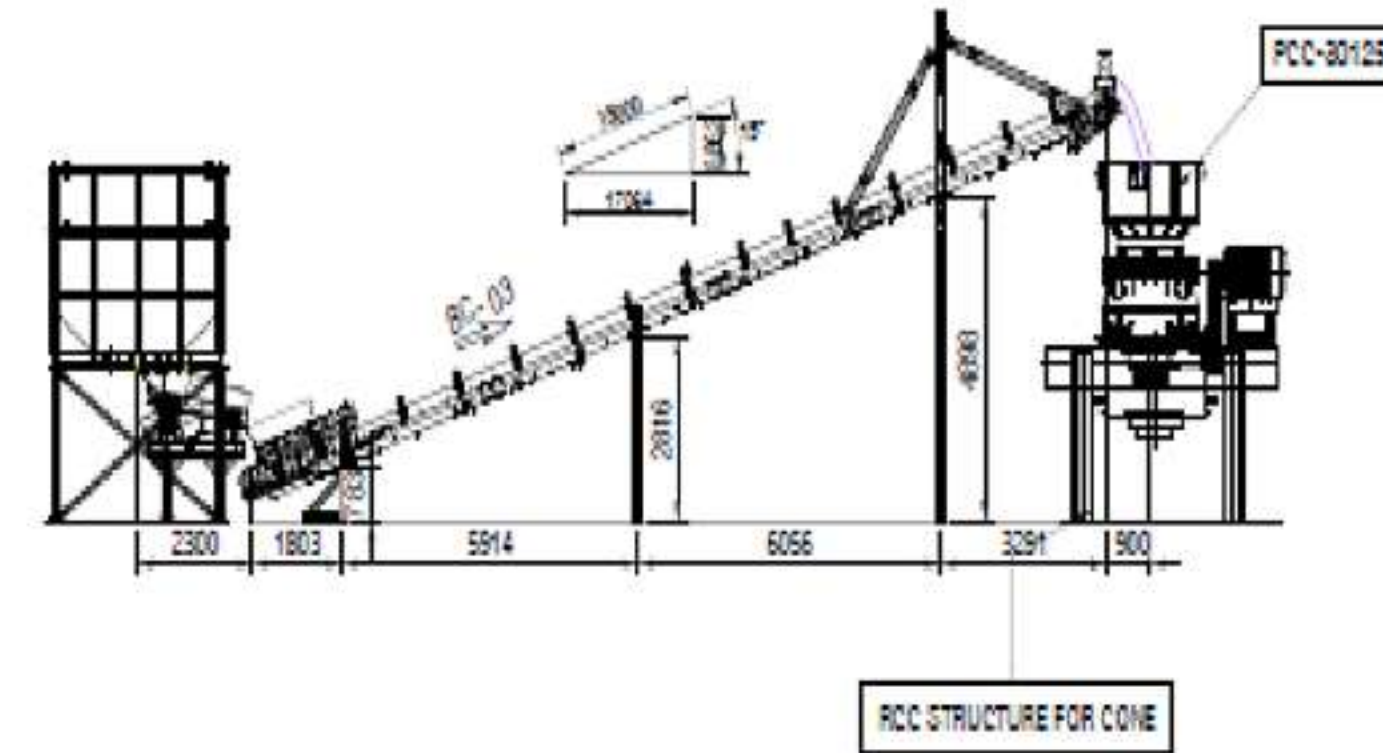
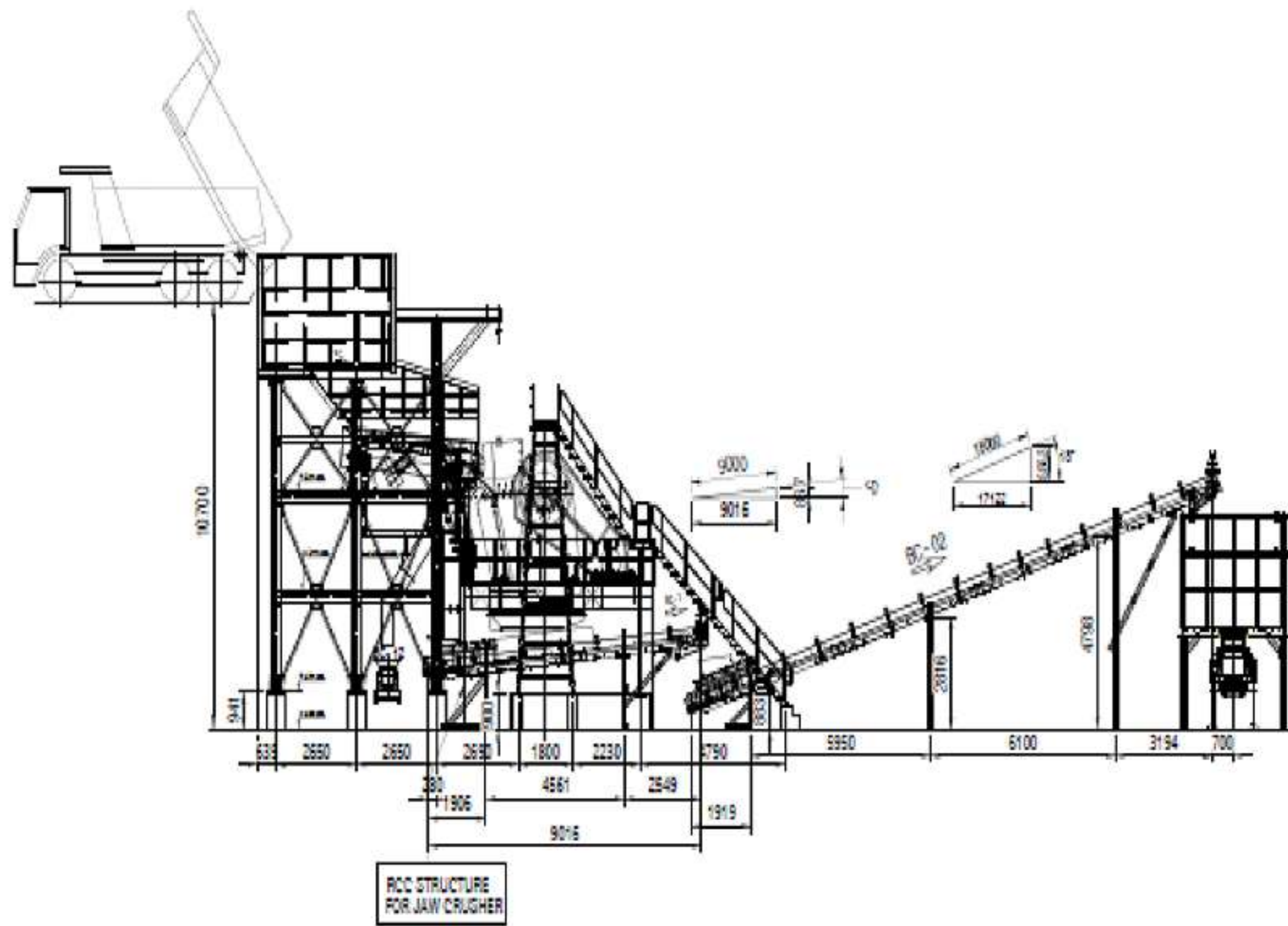
Finished products are moved via specialized inclined conveyors to designated sections of the Stock Area on the 81-acre site.

SI. NO	DESCRIPTION	SIZE	QTY	MOTOR (KW)
01	HOPPER	40 CUM	01	-
02	GRIZZLEY FEEDER	PGF 1545	01	2 x 7.6 (1000 RPM)
03	JAW CRUSHER	PJC 12096	01	160
04	PRIMARY SKID	-	01	-
05	SECONDARY SKID	-	01	-
06	CONE CRUSHER	PCC 30125	01	250 + 13.2
07	SCREEN SUPPORTING STRUCTURE	-	01	-
08	VIBRATING SCREEN - 4D	PMVS 2060	01	22
09	SURGE HOPPER	CAP: 30 Cum.	01	-
10	VIBRO FEEDER	1000W x 2000 Lg	01	2 x 2.3
11	METAL DETECTOR	-	01	-
12	BELT CONV - 1	1000W x 9000 Lg.	01	11

Dispatch:

From the stock area, materials are loaded onto trucks for commercial distribution.

SI. NO	DESCRIPTION	SIZE	QTY	MOTOR (KW)
13	BELT CONV - 2 (18° INCLINED)	1000W x 18000 Lg.	01	15
14	BELT CONV - 3 (19° INCLINED)	1000W x 18000 Lg.	01	15
15	BELT CONV - 4 (18° INCLINED)	1000W x 31000 Lg.	01	22
16	BELT CONV - 5 (18° INCLINED)	800W x 18000 Lg.	01	11
17	BELT CONV - 6 (18° INCLINED)	600W x 18000 Lg.	01	7.5
18	BELT CONV - 7 (18° INCLINED)	600W x 18000 Lg.	01	7.5
19	BELT CONV - 8 (18° INCLINED)	600W x 18000 Lg.	01	7.5
20	BELT CONV - 9 (18° INCLINED)	600W x 18000 Lg.	01	7.5
21	BELT CONV - 10 (18° INCLINED)	1000W x 8000 Lg.	01	15
22	BELT CONV - 11 (18° INCLINED)(GSB)	1000W x 18000 Lg.	01	15
23	BELT CONV - 12 (16° INCLINED)	500W x 10000 Lg.	01	5.5



Conveyor Network

The plant includes 12 belt conveyors for efficient material transport between processing stages and stockpiles.

These conveyors maintain continuous production flow

Plant Elevation Plan

The plant elevation layout ensures:

- Efficient Material Movement
- Improved Operational Safety
- Optimized Plant Maintenance Access

Crusher Plant Equipment

Major plant equipment includes:

- Hopper (40 CUM)
- Grizzly Feeder PGF 1545
- Jaw Crusher PJC 12096
- Cone Crusher PCC 30125
- Vibrating Screen PMVS 2060

Additional systems include surge hoppers and feeders.

Stockyard & Equipment Workshop

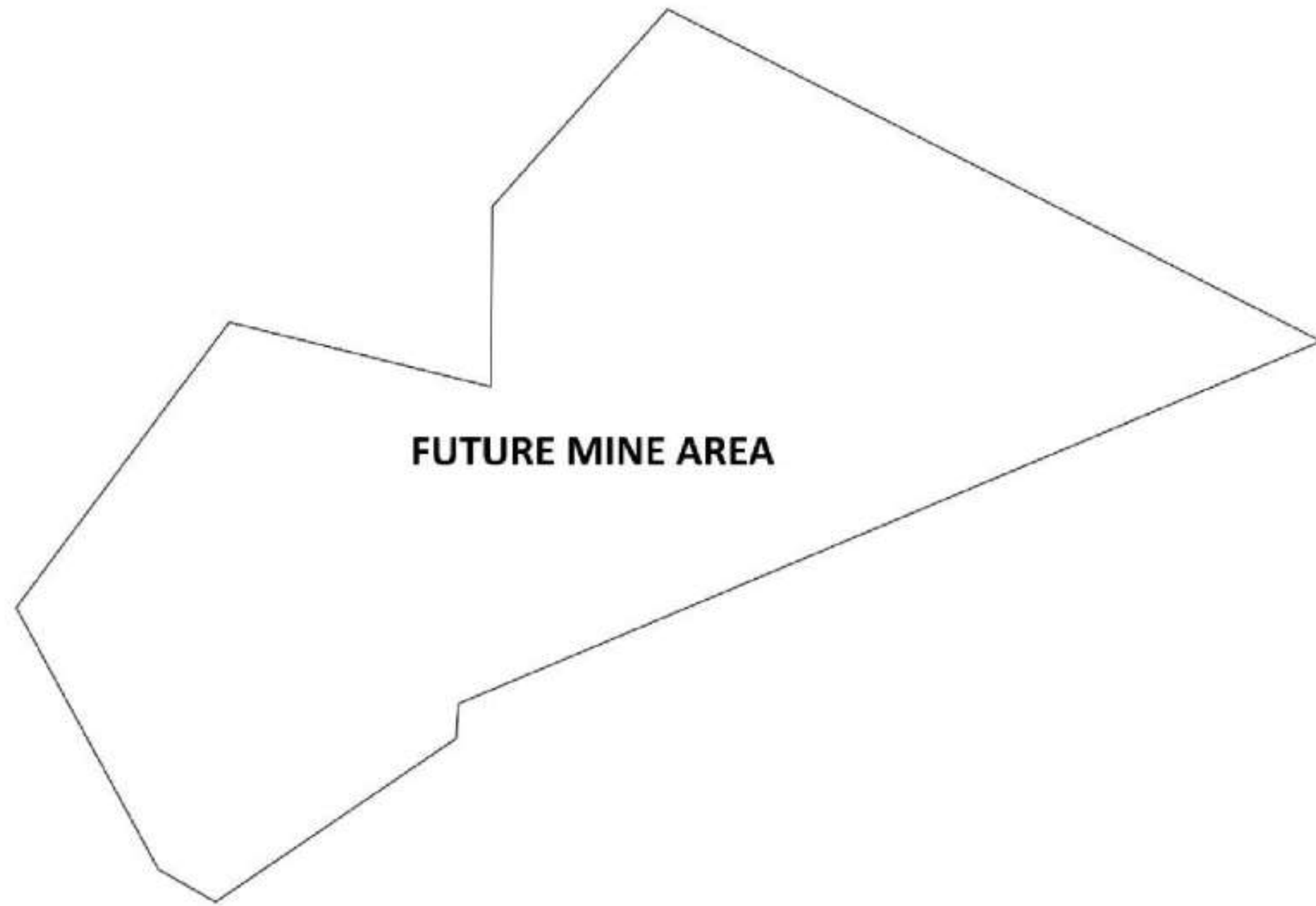


The stockyard stores aggregates by size category for efficient dispatch.



The workshop supports maintenance of crushers, conveyors and heavy machinery.

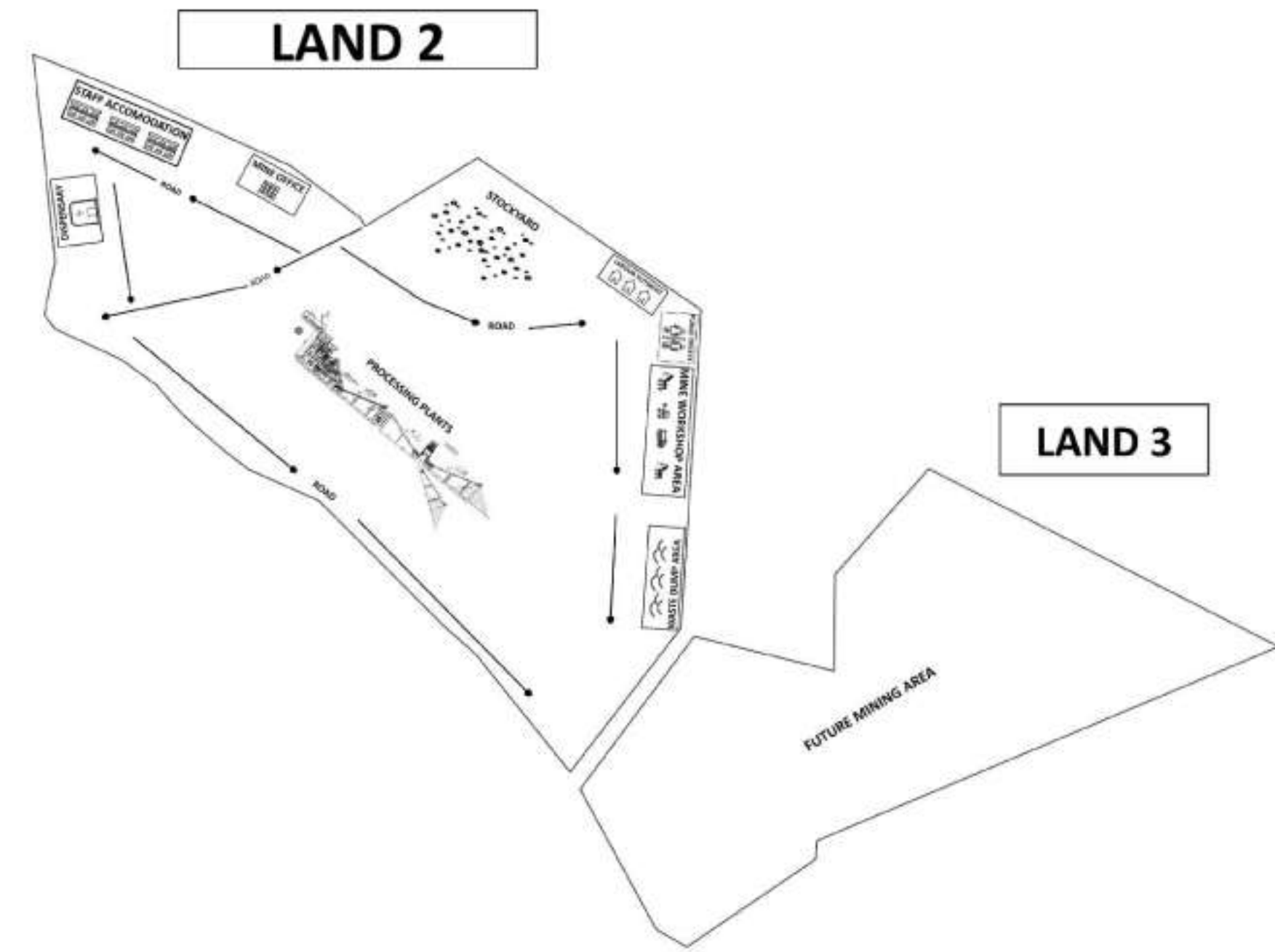
Future Mining Reserve & Conclusion



Land 3 provides 45 acres of reserve mining area for future project expansion

This ensures long-term sustainability of the quarry operation.

Reach Mining TZ Limited looks forward to working in partnership with the Government of Tanzania to develop responsible mining infrastructure that supports national economic growth.



Purpose

Strategic Expansion & Long term Sustainability

Operational Role:

Serves as a "buffer zone" to ensure the longevity of the investment project.
Planned for secondary phase extraction once the Land 1 deposits reach mid-cycle.



**Reach Mining
Tz Limited**

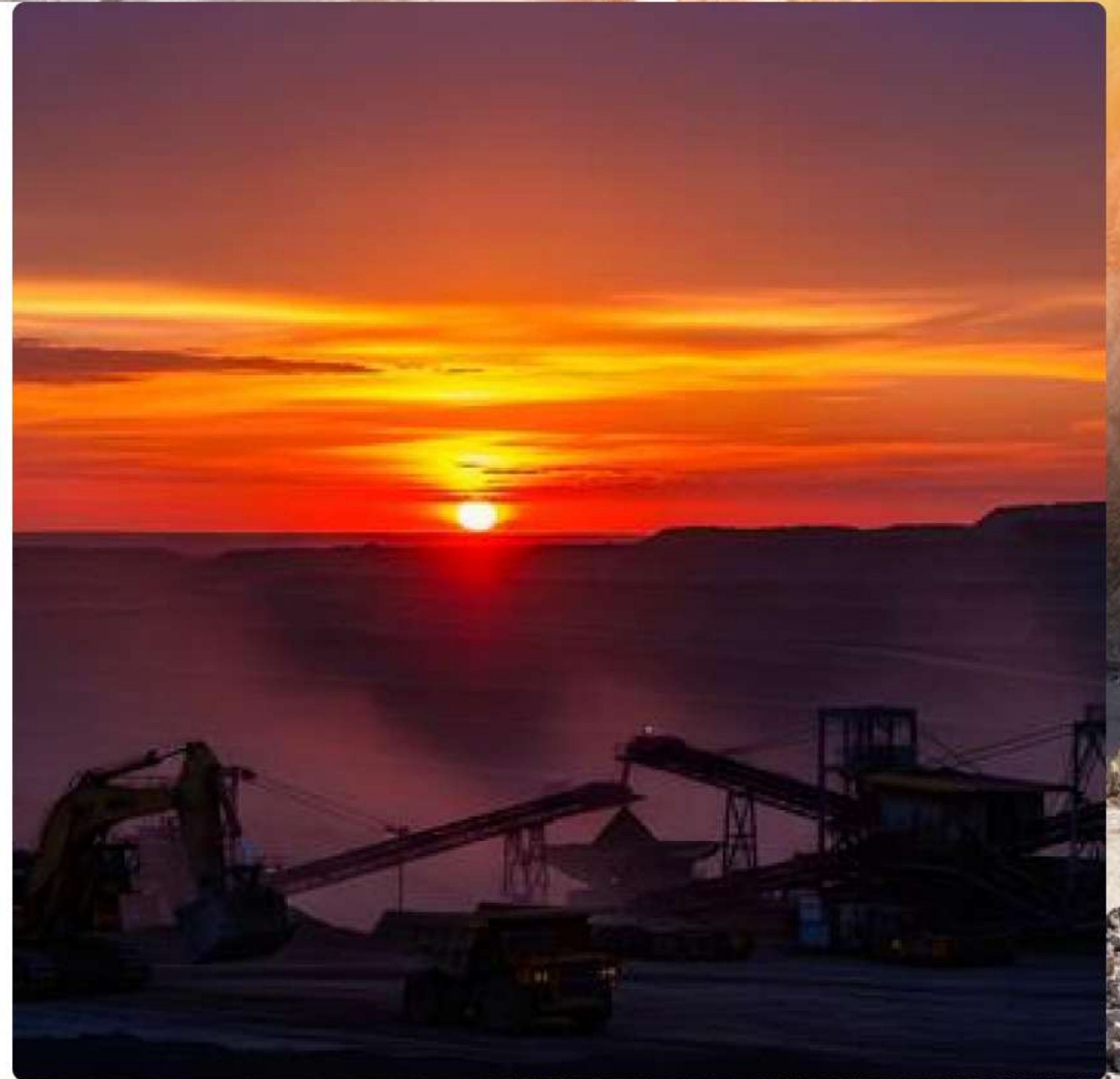
Contact Us

Office Address :
Plot No. 03, D.L. Plaza, Nyerere Road, Dar Es Salaam,
Tanzania - 202264

 +255 796 170 409

 reachtanzania@gmail.com

 www.reachdredging.com



Parent Group Background

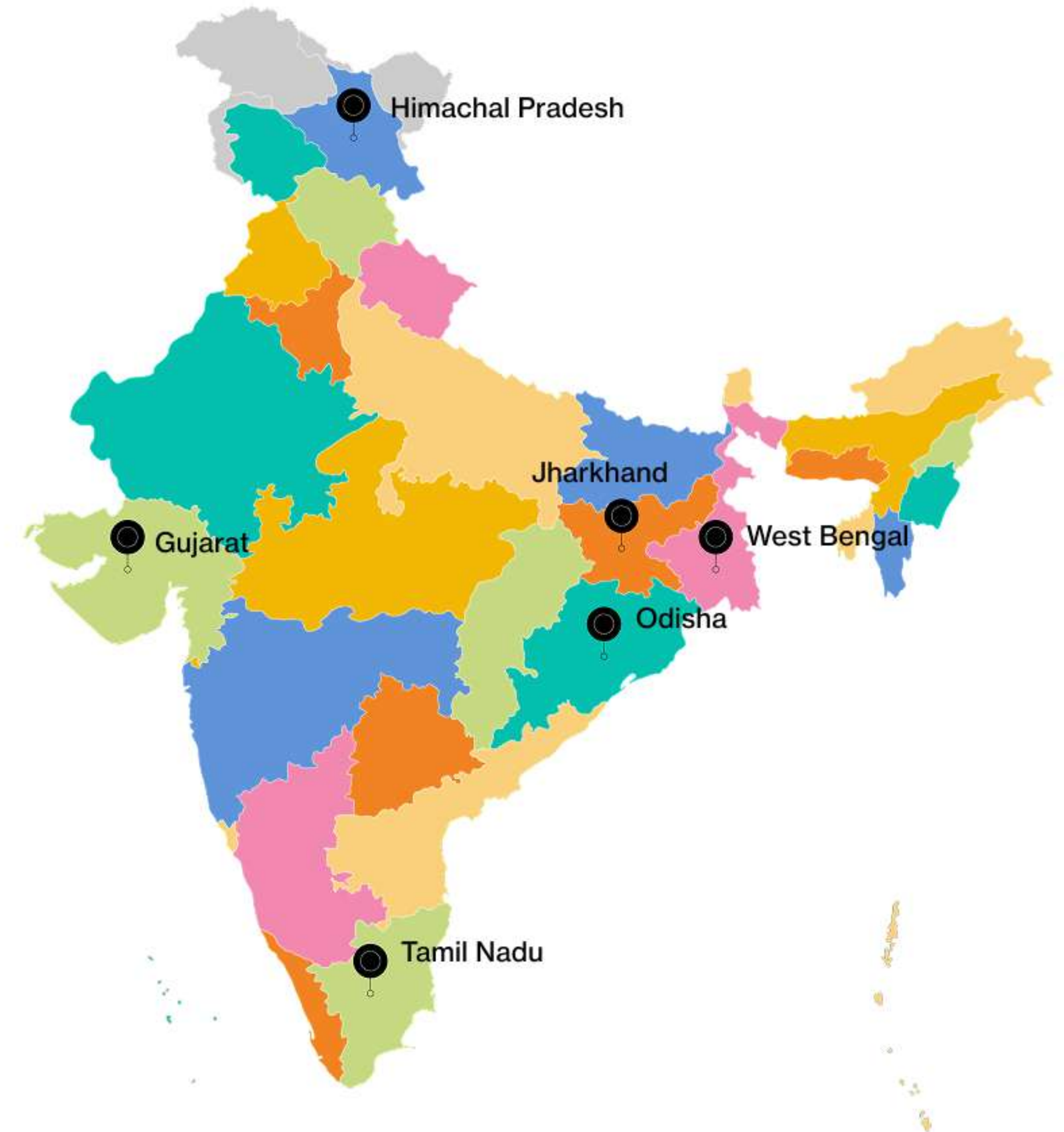
Reach Mining TZ Limited is supported by the industrial expertise of Rashmi Group, one of India's leading industrial conglomerates.

Headquartered in Kolkata, India, Rashmi Group has built a strong reputation over the past four decades through visionary leadership, sustainable manufacturing practices, and a long-standing commitment to industrial development and nation-building.

The group operates under the leadership of Mr. Sajjan Kumar Patwari along with his three sons:

- Mr. Sunil Kumar Patwari
- Mr. Sanjib Kumar Patwari
- Mr. Sanjay Kumar Patwari

From its strong base in Eastern India, including West Bengal, Jharkhand, and Odisha, Rashmi Group has expanded across several Indian states such as Tamil Nadu, Gujarat, and Himachal Pradesh, making it a diversified pan-India industrial enterprise.



Industrial Strength and Manufacturing Capabilities

The company operates across multiple mineral sectors including:



Iron & Steel



Cement



Aluminium



Power Generation



Ferro Alloys



Mining

The Group's total installed capacity includes:

8.3

Million Tonnes Per Annum (MTPA) in Iron & Steel production

1,050

MW power generation capacity through captive and independent power plants

1.9

MTPA cement production capacity

0.15

MTPA ferro alloys production

0.20

MTPA aluminium production

The group's product portfolio covers the complete steel value chain including pellets, sinter, pig iron, sponge iron, billets, TMT bars, and wire rods. Additionally, the company manufactures specialized products such as ductile iron pipes, ferro alloys, and aluminium products, supplying key sectors such as infrastructure, automotive, and utilities.

The operations are further supported by 4 captive railway sidings and 39 GPWIS units, ensuring strong logistics and supply chain efficiency.

Executive Summary

This proposal outlines the development of a modern quarry mining and aggregate processing facility in Pongwe, Chalinze District.



The project will establish:

- ✓ Quarry extraction zone
- ✓ Crushing and screening plant
- ✓ Aggregate stockyard
- ✓ Industrial maintenance facilities
- ✓ Worker accommodation and welfare infrastructure

The project supports Tanzania's infrastructure development and construction industry.

Investment Plan in Tanzania

Reach Mining TZ Limited plans to make a significant investment in Tanzania's mining sector.

Initial projected investment: approximately USD 5 million.

The initial phase of operations will focus primarily on aggregate production and related mining activities.

Additional operational segments and expansion projects will be implemented in future phases based on the next investment projections.

This phased development approach will allow the company to establish stable operations while gradually expanding its activities within the country.

Employment Generation

One of the core commitments of Reach Mining TZ Limited is to contribute to local employment and skills development.

During the initial stage of operations, the company expects to generate more than 50 direct employment opportunities, primarily for local Tanzanian citizens.

As the project expands in future phases, the number of employment opportunities is expected to grow significantly through:

- Direct employment
- Indirect employment through contractors and suppliers
- Skills training and workforce development programs



Mining Division Overview

Reach Mining's Mining Division aims to redefine mineral exploration and extraction in both domestic and international markets.

The division focuses on:



Efficient Mining Operations



Responsible Resource Management



Advanced Geological Analysis



Sustainable Extraction Practices

Reach Mining's Mining Division aims to redefine mineral exploration and extraction in both domestic and international markets.

Commitment to Tanzania

Reach Mining TZ Limited is excited to establish operations in Tanzania and recognizes the strong business and development opportunities available in the country.

The company is committed to:

Supporting the economic growth of Tanzania

Creating employment opportunities for local communities

Contributing to infrastructure development, including roads and logistics

Supporting community development initiatives

Participating in programs that help improve the livelihoods of local populations

Through responsible investment and sustainable business practices, the company aims to become a long-term partner in Tanzania's industrial and economic progress.



Our Vision

To become a responsible and reliable mining and industrial partner in Tanzania while contributing to sustainable development, economic growth, and community empowerment.



Our Mission

Our mission is to deliver efficient and environmentally responsible mining operations.

KEY COMMITMENTS:



Ethical Mining Practices



Technological Innovation



Long-term Environmental Protection



Value Creation for Stakeholders

Company Registration Documentation


THE UNITED REPUBLIC OF TANZANIA
BUSINESS LICENCE
 B.L.No: 20000104103
The Business Licensing Act No. 25 of 1972 (R.E. 2002)

- Issuing office : BUSINESS REGISTRATIONS AND LICENSING AGENCY
- Tax Identification Number: 191-437-349
- Licence issued to: REACH MINING TZ LIMITED for the Business of : Export Of Cement And Other Building Materials
- Business Location
 Region: Dar Es Salaam
 District: Ilala Municipal Council
 Ward: Vingunguti
 Street: Nyerere
- Principal/Branch: Principal
- Amount of fee paid: TZS 300000 Receipt No: 1064851 on: 10/12/2025
- New Licence No: 20000104103 Dated: 10/12/2025
- Date of issue: 10/12/2025 Expiring date: 09/12/2026




This digital copy does not require a signature authority

NOTE - This Business Licence must be kept in a conspicuous position at the principal place of business . Any change in the particulars originally registered must be notified to the Licence Issuer.


TANZANIA
C.I
BRELA
BUSINESS REGISTRATIONS AND LICENSING AGENCY

Certificate of Incorporation of a Company
 Section 15
No: 191437349
 I HEREBY CERTIFY THAT
REACH MINING TZ LIMITED
 is this day incorporated under the Companies Act, 2002
 and that the Company is Limited.

GIVEN under my hand at Dar es Salaam this 2nd day of
 DECEMBER TWO THOUSAND AND TWENTY FIVE.



PRINC. ASST. REGISTRAR OF COMPANIES

CTN: 2451163

TANZANIA REVENUE AUTHORITY
 CERTIFICATE OF REGISTRATION
 FOR
TAXPAYER IDENTIFICATION NUMBER (TIN)
ISSUED UNDER SECTION 53 OF THE TAX ADMINISTRATION ACT 2018
THIS IS TO CERTIFY THAT
REACH MINING TZ LIMITED
 HAS BEEN REGISTERED WITH THE TANZANIA REVENUE AUTHORITY
 AND ASSIGNED THE TAXPAYER IDENTIFICATION NUMBER,
191-437-349
 WITH EFFECT FROM: 02 DECEMBER 2025
 TRA LOCATION: ILALA TAX OFFICE: BUGURUNI
 PHYSICAL LOCATION: PLOT No. 03 BLOCK No. 3RD FLOOR
 STREET / AREA: VINGUNGUTI

ALFRED T. NREGI
 COMMISSIONER FOR DOMESTIC REVENUE


MEET THE REQUIREMENTS UNDER WHICH THIS CERTIFICATE IS ISSUED AND SECTION 53 OF THE ACT


TANZANIA REVENUE AUTHORITY
 ISO 9001: 2015 CERTIFIED
TAX CLEARANCE CERTIFICATE
(Issued Under Regulation 103 of Tax Administration (General) Regulations, 2018)

Licensing Authority, TIN: 100-971-390 BUSINESS REGISTRATION LICENSING AGENCY (BRELA) LUMUNDA P.O. BOX DAR ES SALAAM	Tax Certificate Number: 131-4229-0023 Issuing Office: Itala Telephone: 022-2861160 Date of Issue: 04 December 2025 Expiry Date: 31 December 2026
---	--

Taxpayer Name: REACH MINING TZ LIMITED Trading Name: Taxpayer Identification Number: 191-437-349	Vat Registration Number: Company Registration Number: Business Premises located at: REGION: DAR ES SALAAM, DISTRICT: ILALA, STREET: VINGUNGUTI
--	---

This is to certify that the above registered Taxpayer has complied with tax laws and has been granted Tax Clearance Certificates with respect to the following business(es):

- Quarrying of stone, sand and clay
- Other mining and quarrying, etc.
- Support activities for other mining and quarrying


Alfred T. Nregi
 COMMISSIONER FOR DOMESTIC REVENUE
 04 December 2025



Disclaimer :

- This certificate is issued free of charge.
- This certificate should be produced in its original form and it is valid only if it is embossed with QR Code.
- This Tax Clearance Certificate shall not prejudice the Commissioner General from demanding and recovering taxes established after issuance of this Certificate.