

JINCHAN HOLDINGS
金蝉实业

Mining Investment Plan
投资计划

Report Mr Ou

CEO-JinChan Holdings Limited

JinChan Holdings Limited

01

项目概述
Project
overview

02

分阶段投资解析
Analysis of staged
investment

03

技术与设备方案
Technical and
Equipment
Solutions

04

财务与风险评估
Financial and Risk
Assessment

05

社会效益与环保承诺
Social benefits and
environmental
commitments

01 项目概述

Project overview

市场机遇与政策红利 Market opportunities and policy dividend

Market opportunities 市场机遇

Tanzania gold reserves data: proven rock gold reserves of 2300 tons (USGS 2024), sand gold belt covering the Victoria Lake basin.

坦桑尼亚金矿储量数据：已探明岩金储量2300吨（USGS 2024），砂金带覆盖维多利亚湖盆地

Policy dividends 政策红利

Income tax reduction and exemption for foreign-funded mining enterprises in the first three years (Article 8 of Tanzania's Investment Law)

外商投资矿业企业前三年所得税减免（坦桑尼亚投资法第8条）

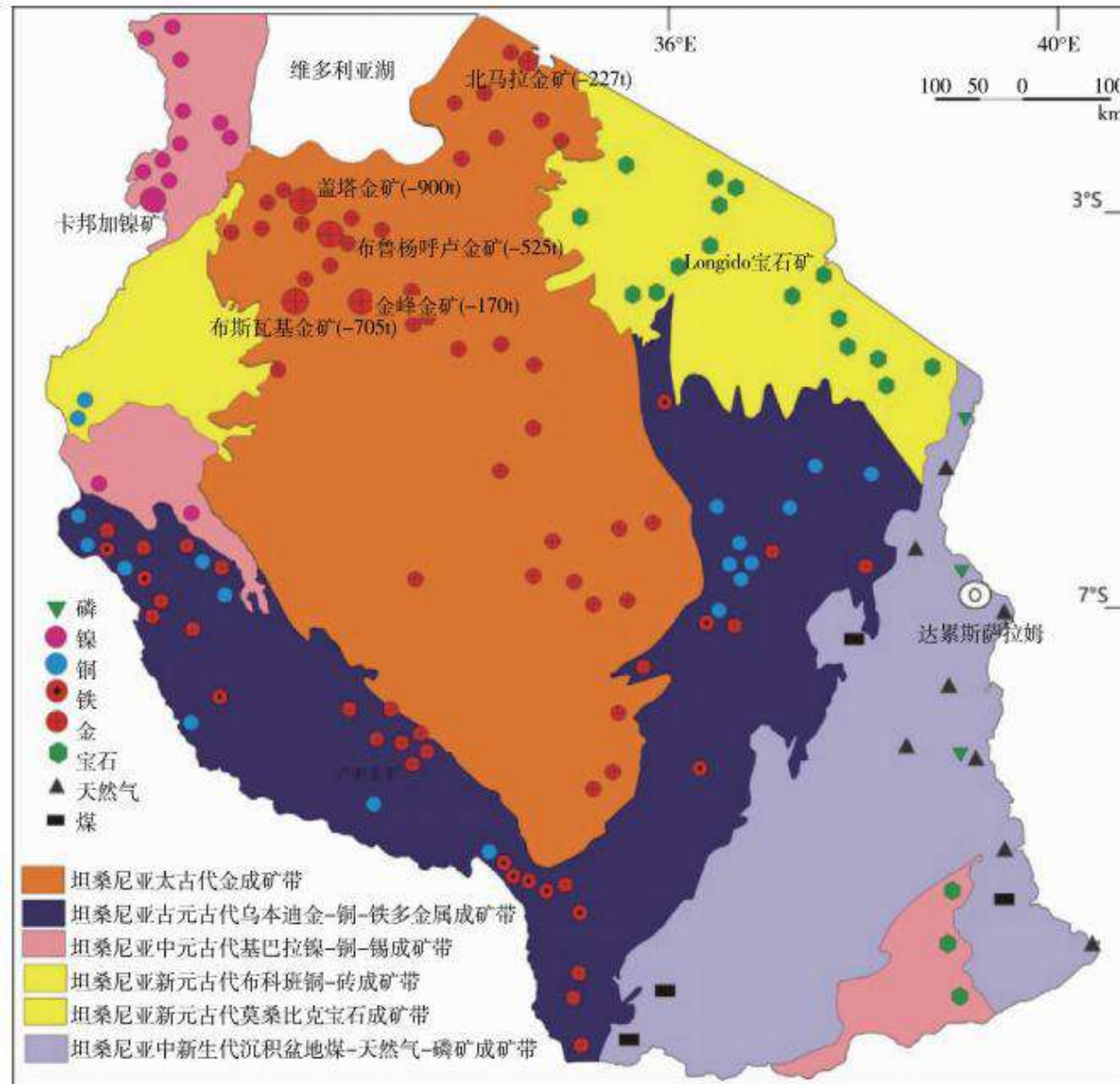


图1 坦桑尼亚成矿区带划分及典型矿床分布略图

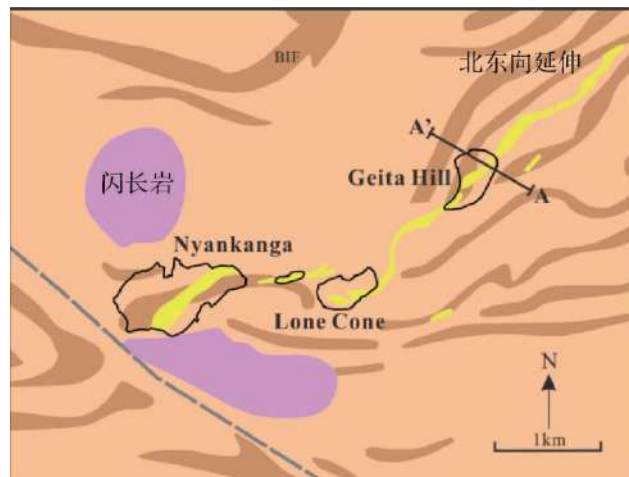
市场机遇与政策红利

Market opportunities and policy dividend

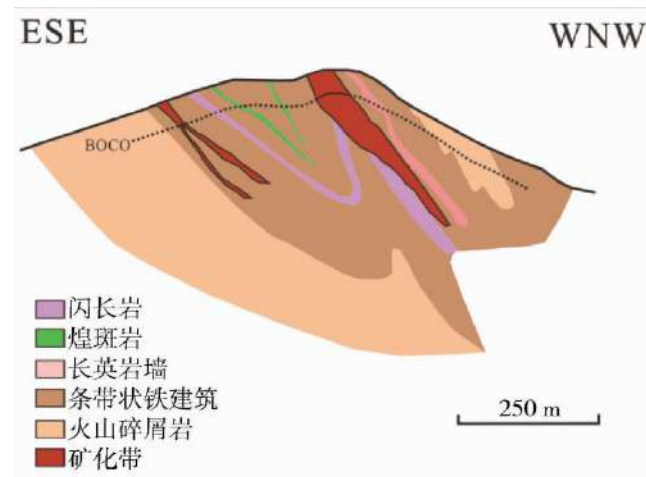
Tanzania is a prominent hub for the eastern Africa and the southeast Africa, with highlighted strategic positions, It is fourth largest resources country of Africa, with rich mineral resources, **Tanzania is the largest gold producing country in East Africa**, endowed with a gold reserve of ca.2300 tons. and development of mining is rapid in recent years, and there are good investment prospects in the mining and related industries.

坦桑尼亚是东部非洲和东南部非洲的重要出海口! 战略位置突出,坦桑尼亚矿产资源丰富! 是非洲第四大资源国! **坦桑尼亚是东非第一产金大国!** 资源量达2300吨。并且近年矿业发展迅速! 矿业及相关产业具有良好的投资前景。

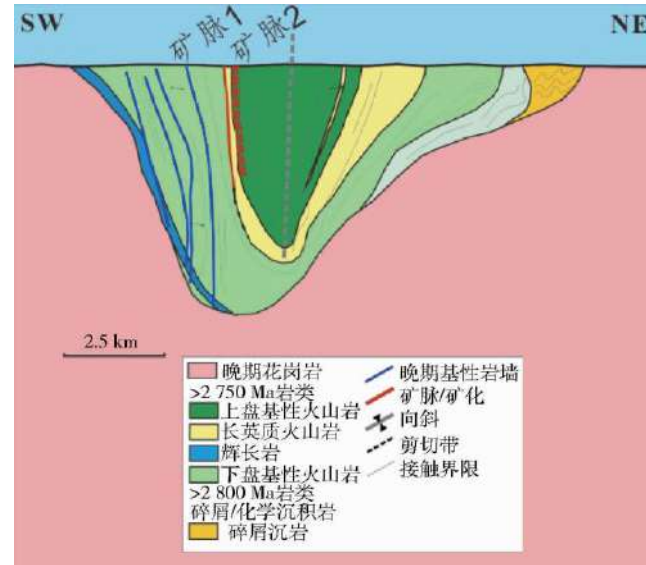
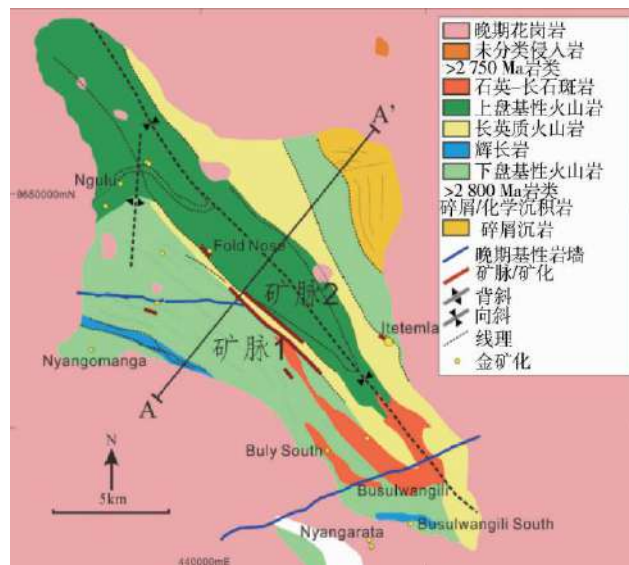
**地区金矿地质简图



平面图



剖面图



投资计划概览 Overview of Investment Plan

Phase I \$30,000 USD 第一阶段 30万美金

Quick verification of mineral veins using small mobile devices (to avoid exploration rights risks)

利用小型移动设备快速核实矿脉（规避探矿权风险）

Phase II 1,200,000~1,500,000 USD 第二阶段 120至150万美金

Modular Sand Gold Sorting System (Suitable for Seasonal River Mining)

模块化沙金分选系统（适用于季节性河流采矿）

Phase III 6,000,000-8,000,000 USD 第三阶段 600至800万美金

Rock Gold Deep Processing Chain (Extracting Finished Gold with Purity \geq 99.5%)

岩金深加工链（提取纯度 \geq 99.5%的成品金）

项目战略定位 Project Strategic Positioning



Differentiation Competitive 差异化竞争

The first phase is expected to invest \$300000 in light assets and verification mining
首期预计投资30万美金轻资产及验证挖矿

2025Q2-Q4



Technology upgrade 技术升级

The second phase is expected to invest 1.2-1.5 million US dollars to add intelligent washing and sorting units
二期预计投资120-150万美元, 增加智能洗矿/选矿装置

2027Q1-Q3



Heavy asset layout 重资产布局

Ball mill+cyanide leaching system (daily processing capacity of 1000 tons of ore)
Precious Metal Refining Workshop球磨机+氰化浸出系统 (日处理矿石1000吨)
贵金属精炼车间

2027Q4-2028



Copy and expand, give back to the local community

复制并扩展,以回馈当地社区

2029-

02 分阶段投资解析

Analysis of staged investment

第一期投资详情 2025Q2-Q4, 30万美金

Details of the First Investment Phase (2025 Q2-Q4, \$300,000)



- 2 portable jaw crushers (15kw, processing capacity 1-3 tons/hour) 移动颚式破碎机2台 (15kw, 处理能力1-3吨/小时)
- Ball mill (18.5kw, processing capacity 1-2 tons/hour) 球磨机 (18.5kw, 处理量1-2吨/小时)
- Rolling gold machine (7.5kw, processing capacity 0.8-1 tons/hour) 滚金机 (7.5kw, 处理量0.8-1吨/小时)
- 4 Gold panning shaker (1.5kw, processing capacity 0.5-1 tons/hour) 4 台淘金摇床 (1.5kw, 处理能力0.5-1吨/小时)

Expected processing capacity: 20-30 t/d

预计处理能力: 20-30吨/天

Expected to require local employees: 20

预计需要当地雇员: 20人

第一期投资详情 Details of the First Investment Phase



- 10 gold selection chutes (Gasoline powered, processing capacity 0.5-1 tons/hour) 10 个选金槽 (汽油驱动, 处理能力 0.5-1 吨/小时)
- 10 gasoline water pumps (Gasoline powered, processing capacity 60 m³/hour) 10 个汽油水泵 (汽油驱动, 处理能力 60 立方米/小时)
- 10 hand carts (Human driven, processing capacity 0.1-0.3 tons/hour) 10 辆手推车 (人力驱动, 处理能力 0.1-0.3 吨/小时)
- Expected processing capacity: 15-20 t/d
- 预计处理能力: 15-20 吨/天
- Expected to require local employees: 30
- 预计需要当地雇员: 30 人

第二期 投资重点

Key investment focus of the second phase (2026, \$1,200,000-1,500,000)

- 1 Intelligent washing unit (including mud and sand separation+mercury substitution process) 智能洗涤单元 (含泥砂分离+汞置换工艺)
- 2 Compliance document: Submit the Environmental Impact Assessment Report (NEMC standard) 合规文件: 提交环境影响评估报告 (NEMC标准)

第二期投资重点

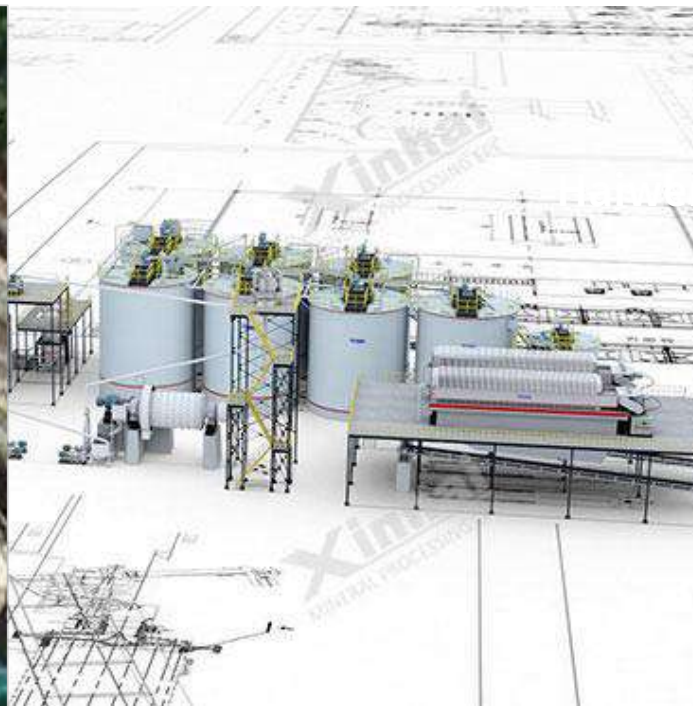
Key investment focus
of the second phase



第三期投资布局

Third phase investment layout (2027-2028)

\$6,000,000-8,000,000



Precious metal refining workshop (compliant with LBMA standards)
 贵金属精炼车间 (符合 LBMA 标准)



Heavy asset layout
 重资产布局

Process upgrade
 工艺升级

Land Agreement 土地协议

Ball mill+cyanide leaching system (daily processing capacity of 1000 tons of ore) 球磨机+氰化浸出系统 (日处理矿石1000吨)

Negotiate 20 hectares of industrial land concession with TIC 与坦桑尼亚投资中心谈判20公顷工业用地特许权

第三期投资细节 Details of the Third Investment Phase



Mining equipment
采矿设备



Mineral processing equipment
选矿设备



Smelting equipment
冶炼设备

03 技术与设备方案
Technical and
Equipment Solutions

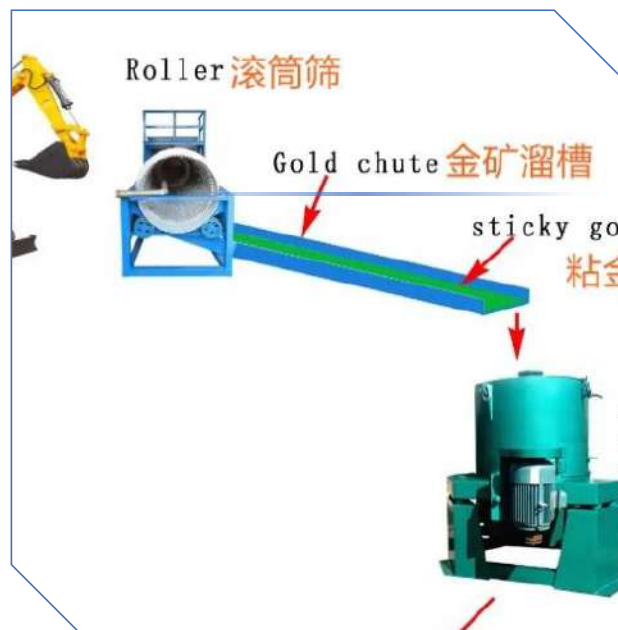
设备参数与环保指标

Equipment parameters and environmental indicators



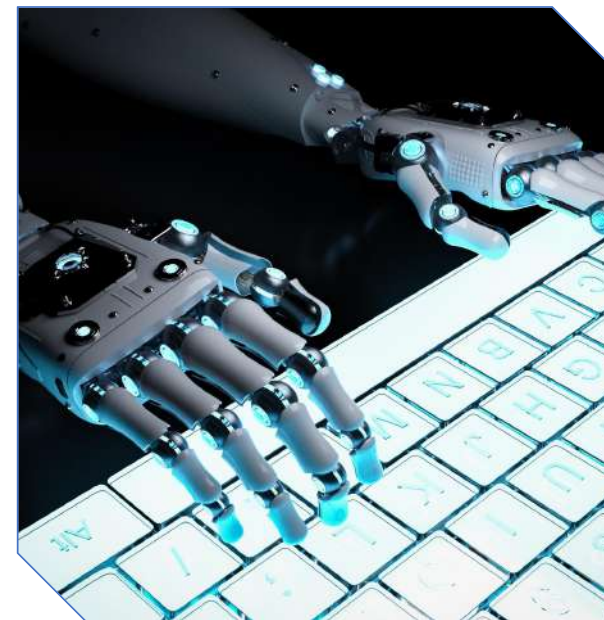
I

Phase I mobile crusher noise $\leq 75\text{dB}$ (10 meters away from equipment) diesel power (suitable for power shortage mining areas)
一期移动式破碎站噪音 $\leq 75\text{dB}$ (距设备10米) 柴油动力 (适合缺电矿山地区)



II

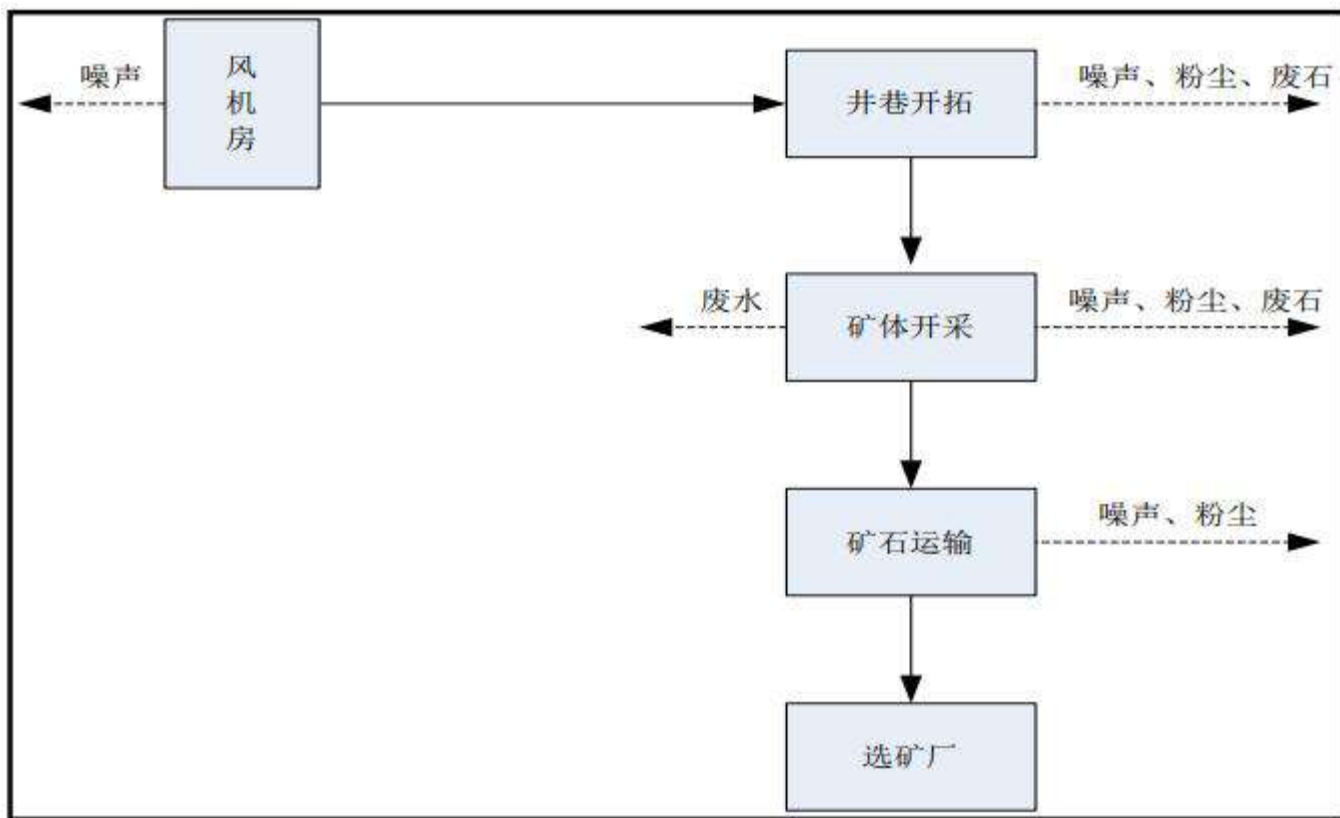
Phase II the mining area has no external emissions, the water settles and is reused, the mining area is backfilled, and modular transportation
二期矿区无外排放、水沉淀回用、矿区回填、模块化运输



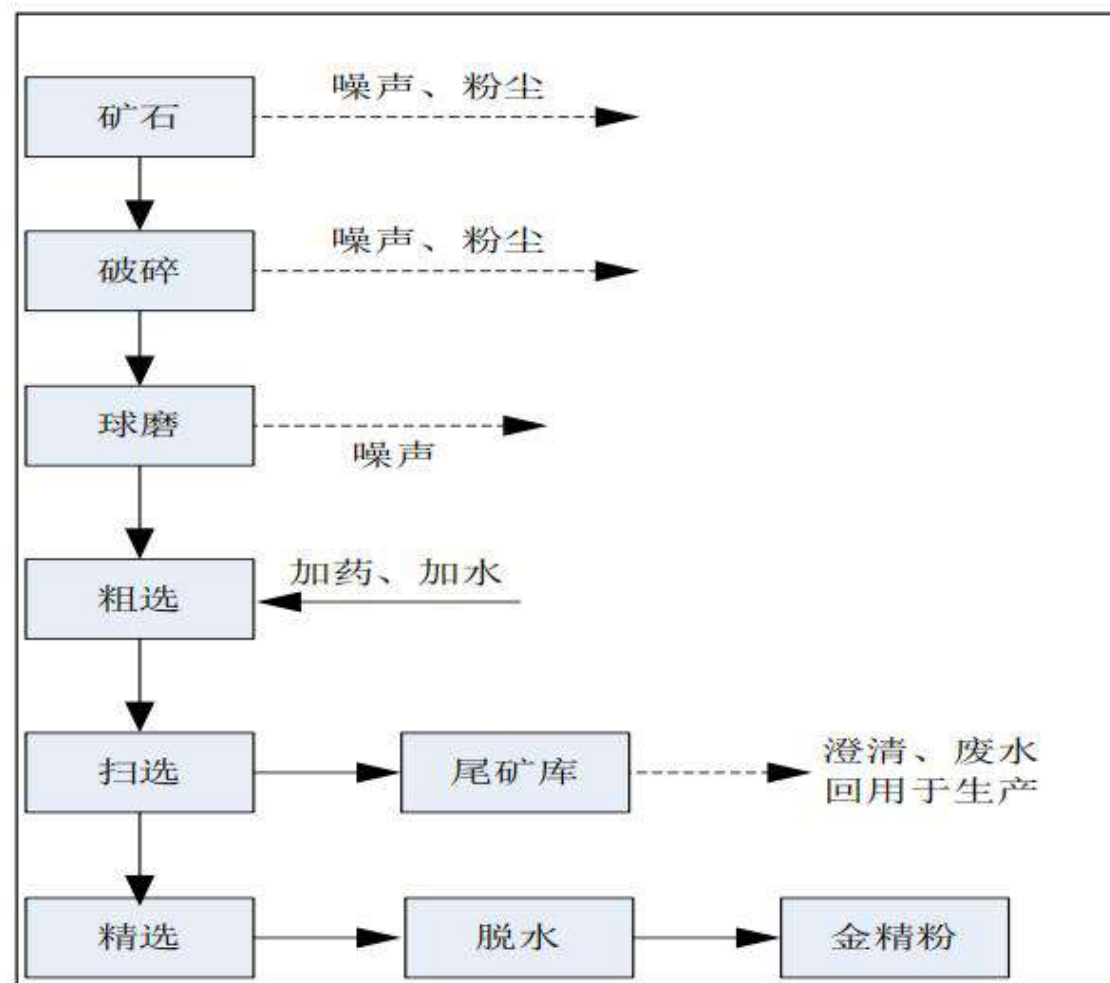
III

Phase III closed leaching tank cyanide concentration monitoring (0.01ppm threshold) equipped with Swahili language operation interface
三期密闭浸出槽氰化物浓度监测 (0.01ppm 阈值) 配备斯瓦希里语操作界面

采矿与选矿工艺流程 Mining and mineral processing process

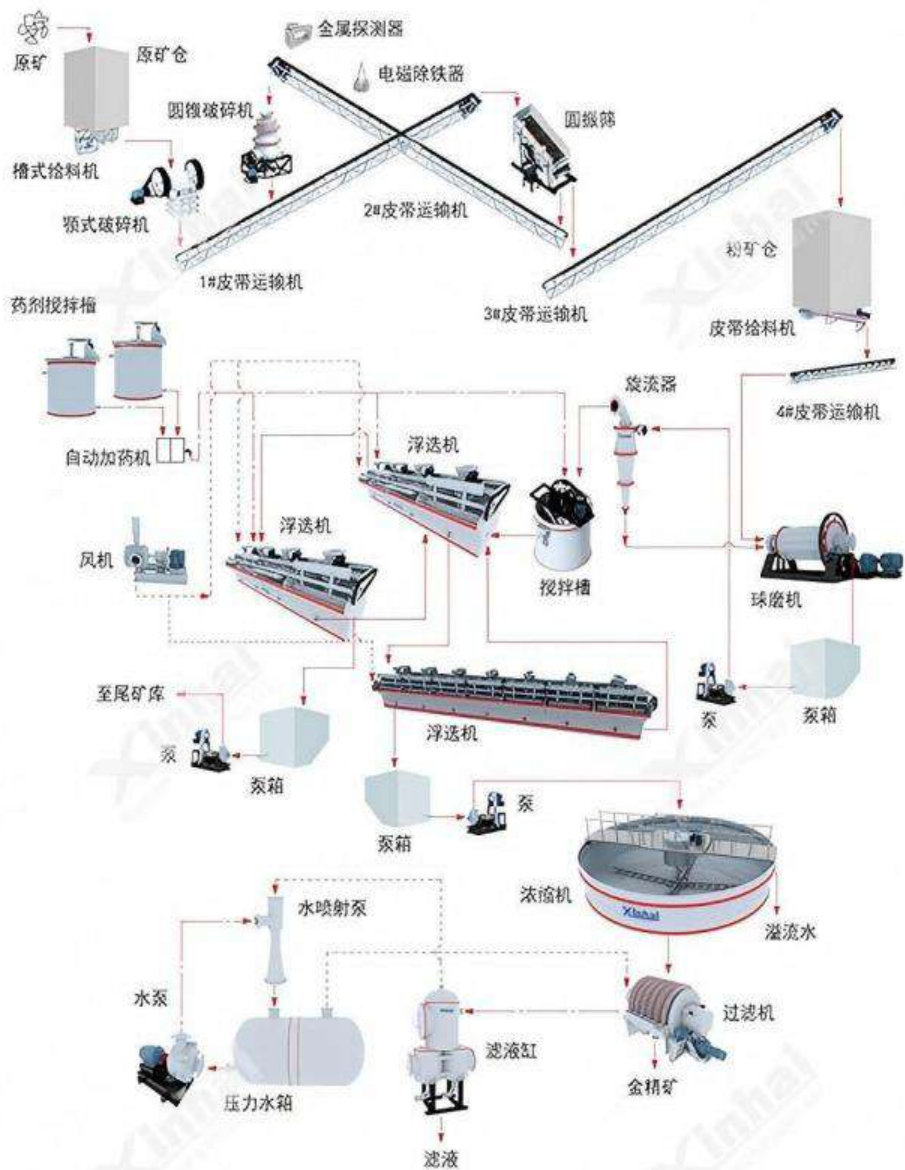


采矿生产工艺流程图



选矿生产工艺流程图

金矿浮选工艺流程及所需设备 Gold flotation process and required equipment



KYF型充气搅拌式浮选机



XPA型耐磨橡胶渣浆泵



高堰式螺旋分级机



高效高频脱水筛



程控自动液压厢式压滤机



湿式溢流型球磨机

砂金矿选矿工艺所需设备 Equipment required for placer gold ore dressing process



SF型机械搅拌式浮选机



圆振动筛(YA)



DZS直线振动筛



湿式格子型球磨机



跳汰机



摇床

矿区实景图 Mining Area



矿区实景图 Mining Area



矿区实景图 Mining Area

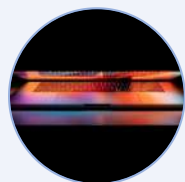


矿区管理团队 Mining Area Management Team



Technological innovation points 技术创新点

Technical support from China Institute of Mining and Metallurgy 中国矿冶研究院技术支持



Sand gold dry sorting technology 砂金干选技术

(reducing water consumption by 80%,
suitable for arid mining areas)
(减少用水量80%，适合干旱矿区)



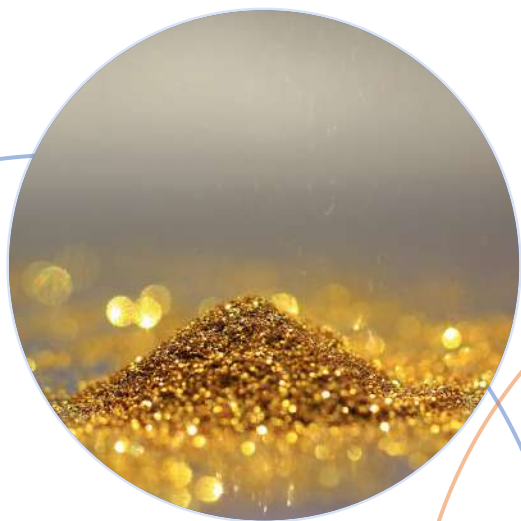
Rock gold tailings reprocessing system 岩金尾矿再处理系统

(recovery rate increased to 92%)
回收率提升至92%

04 财务与风险评估

Financial and Risk Assessment

现金流预测 Cash flow forecast (2025-2028)



2026 Q3

Sand gold production line reaches capacity, monthly cash flow back positive.

沙金产线达产，月度现金流转正



2028 Q4

The rock gold refining plant is put into operation, with an annual gross profit exceeding 3 million USD.

岩金精炼厂投产，年毛利润超300万美元

敏感性分析 Sensitivity analysis

- **Gold price fluctuation: 黄金价格波动:**

For every 10% drop in gold price, the "low-grade ore temporary storage mechanism" is activated
金价每下跌10%，就会启动“低品位矿临时存储机制”

- **Exchange rate risk: 汇率风险**

Signing a forward settlement contract with CRDB Bank (locking 1USD=2500 TZS)
与CRDB银行签订远期结算合约，即锁汇（锁定1USD=2500 TZS）



05 社会效益与环保承诺

Social benefits and
environmental commitments

社区共建与雇佣计划 Community Co construction and Employment Plan

Hiring at least 50 local employees in the first phase (including 2 months of technical training)

第一阶段至少雇用50名当地员工 (包括2个月的技术培训)

01

Hiring at least 150 local employees in the third phase (including 6 months of technical training) 第三阶段至少雇用150名当地员工 (包括6个月的技术培训)

03

02

Hiring at least 100 local employees in the second phase (including 3 months of technical training) 第二阶段至少雇用100名当地员工 (包括3个月的技术培训)

04

2% of the profits will be used for the construction of community schools. 2%利润将用于社区学校建设

环境补偿与生态审计 Environmental compensation and ecological audit



NO.1

Reclamation Fund: Withdraw and retain \$50 per ounce of gold

回收基金：提取并保留每盎司黄金 50 美元



NO.2

Biological monitoring: Collaborating with Central South University to conduct ecological audits in mining areas

生物监测：与中南大学合作开展矿山生态审计

合作单位 Cooperative Units



Tanzania Mining Commission
坦桑尼亚矿业委员会



State Mining Co.
坦桑尼亚国家矿业公司



University of Dar es Salaam
达累斯萨拉姆大学



Central South University
中南大学

金蝉实业

JINCHAN HOLDINGS

期待合作共赢

Looking Forward to Win-Win Cooperation

THANK YOU