



BUSINESS CONCEPT

&

FEASIBILITY PLAN

FOR

**PROPOSED SPEEDY MACHINERY
MANUFACTURING CENTER**

PREPARED BY

M/s SPEEDY MACHINERY COMPANY LIMITED

DAR ES SALAAM

TANZANIA



TABLE OF CONTENTS

	Page
1. Business Proposal.....	2
2. Company's Background	2
3. Market Potential.....	3
4. The Company's Objectives.....	3
5. Implementation Schedule	4
6. Capital Investment Cost	5
7. Financial Plan (Use of Funds)	5
8. Economic Growth	6
9. Competition/Market	6
10. Economic Benefits and Value to the Community.....	7
11. Business Strategy.....	8
12. Conclusion and Recommendation	9
13. Financial and Economic Analysis	8
14. Sensitivity Analysis	9
15. Appendix	10



**ESTABLISHING AND OPERATING PROPOSED SPEEDY MACHINERY
MANUFACTURING CENTER LOCATED AT PLOT 62 & 63, BLOCK “H” KAZOLE,
VIKINDU, MKURANGA, PWANI REGION, TANZANIA**

1. BUSINESS PROPOSAL

This Business Plan has been prepared by **M/s Speedy Machinery Company Limited** for a proposed Mining and General Equipment Manufacturing Center to be established and located at that property currently known and registered as Plot 62 & 63, Block “H” Kazole, Vikindu, Mkuranga, Pwani Region, Tanzania.

The Business Plan has been prepared to manifest and analyze the financial and other resources required for the implementation of the proposed business and also assess its economic viability and commercial viability for presentation to the Shareholders of M/s Speedy Machinery Company Limited and external parties including financial institutions, the revenue authority and potential investment partners. Key to this presentation is the allocation of funds so as to supplement the equity contribution.

2. COMPANY’S BACKGROUND

M/S Speedy Machinery Company Limited is a private company registered / incorporated in Tanzania by Registrar of Companies.

The company’s shareholders seek to invest in a Mining and General Equipment Manufacturing Center to be set up under the auspices and guidance of the Tanzania Investment and Special Economic Zones Authority (TISEZA) at premises to be constructed at Mkuranga, Pwani Region, Tanzania.

We expect to deliver a diverse range of mining and general machinery solutions countrywide and in East and Central Africa in the near future. With the combination of creative innovation and the pursuit of excellence as a corporate objective, we expect to develop a remarkable reputation and continue to enjoy sustained growth and success.

Mkuranga is home to a variety of small and medium sized businesses, including wholesalers, retailer stores, milling equipment, restaurants, butchers, pharmacies, garages, gasoline stations, guest rooms, local bars, salt farms, hardware stores, slaughterhouses, and bars especially in the wards bordering Dar es Salaam region. There has been a notable increase in investment of light industries in the



region where investors have been attracted by favorable investment climate, nearness to Dar es Salaam and its Port leading to regional and international export

A fact sheet on the port of Dar es Salaam shows that Dar es Salaam port is the Tanzania principal port with a rated capacity of 14.1 million (MT) dry cargo and 6.0 million (MT) bulk liquid cargo. The Port has a total quay length of about 2,600 metres with eleven deep-water berths. Dar es Salaam port handles about 95% of the Tanzania international trade. The port serves the landlocked countries of Zambia, Democratic Republic of Congo, Burundi, Rwanda, Malawi, Uganda and Zimbabwe. The port is strategically placed to serve as a convenient freight linkage not only to and from East and Central Africa countries but also to middle and Far East, Europe, Australia and America.

Facilities available to support operations of Dar es salaam port are as follows:

General cargo Berth (0-5) for break bulk, dry bulk and one RORO berth to handle vehicles. Container Terminal Berths (Berth 5 -11) Grain Terminal facility (silos with storage capacity of 30,000 tons). Inland Container Deposits (ICDs) facilities with the capacity of 24,300 TEUs and CFs with the capacity of holding 6,000 vehicles at once. A 150,000 MT Single Point Mooring (SPM) – for handling refined and crude oil. Kurasini oil Jetty (KOJ) for handling refined products (tanker size 45,000MT for KOJ1 and 5,000 tons for KOJ2).

Generally, the intrinsic capacity of the port of Dar es salaam is to handle more than 18 million tons of cargo as follows: -

- General cargo 5.2 million tons.
- Container yard 6.8 million tons.
- Liquid bulk 6.0 million tons.

Are there any clients in the region who would use such manufactured products?

The mining industry in Tanzania has emerged as one of the country's most important economic sectors, playing a key role in driving growth, investment, and employment. Over the past two decades, the government has implemented reforms and policies aimed at strengthening the regulatory framework, increasing transparency, and encouraging responsible investment in mineral exploration and extraction.



Tanzania is richly endowed with a wide range of mineral resources including gold, diamonds, tanzanite, coal, nickel, and rare earth minerals. Gold remains the dominant export mineral, with large-scale operations led by companies such as Barrick Gold Corporation through its joint venture Twiga Minerals Corporation. These investments have significantly contributed to export earnings, infrastructure development, and community initiatives in mining regions.

Another globally unique resource is Tanzanite, which is mined exclusively in the Mererani Hills near Arusha. This gemstone has strengthened Tanzania's reputation as a distinctive player in the global gemstone market.

The government continues to prioritize value addition, local participation, and sustainable mining practices. Through initiatives that support small-scale miners, improved licensing systems, and investments in mineral processing, Tanzania is positioning its mining industry as a stable and attractive destination for investors.

Overall, the sector remains a cornerstone of Tanzania's economic development and a promising driver of long-term prosperity.

What does this mean for our company?

The mining industry in Tanzania continues to expand and presents strong opportunities for local industrial development. As the country increases mineral production and encourages local value addition, the demand for reliable mining equipment, spare parts, and mechanical services is growing rapidly. This creates an important opportunity for domestic manufacturers to support the sector.

The establishment of Speedy Machinery Manufacturing Center represents a positive step toward strengthening Tanzania's industrial capacity. By producing and servicing machinery locally, the center can help reduce dependence on imported equipment, shorten supply chains, and provide faster maintenance solutions for mining operators across the country. Local manufacturing also improves cost efficiency for small and medium-scale miners who often face delays and high costs when sourcing equipment from abroad.



In addition, Speedy Machinery Manufacturing Center can play a role in supporting artisanal and small-scale mining operations by designing practical, durable, and affordable machinery suited to local operating conditions. This contribution aligns well with Tanzania's broader industrialization agenda and its goal of increasing local participation in the mining value chain.

Through innovation, skilled technical training, and reliable engineering services, Speedy Machinery Manufacturing Center has the potential to become a trusted partner for mining companies and contractors. By supporting productivity and equipment reliability in the mining sector, the center can contribute to Tanzania's continued economic growth and industrial development.

The Proposed Mining and General Equipment Manufacturing Center will therefore be taking advantage of the intrinsic factors mentioned above while at the same time leveraging on the exciting environment located at Mkuranga for investment purposes.

The management has therefore thought it is prudent to establish and operate high quality and modern facility that will serve this clientele who will invariably need our high quality products.

3. MARKET POTENTIAL

This clearly represents an opportunity for our organization to not only do profitable business but also provide high quality mining and general machinery solutions to all our esteemed clientele.

This is also informed by below key factors as analyzed by the company.

Strategic Location

- **Port of Dar es Salaam:** As one of the largest and busiest ports in East Africa, Dar es Salaam handles a significant volume of cargo. A warehouse and logistics center in close proximity to the port can streamline import and export activities, reducing costs and improving efficiency.



- **Regional Trade Hub:** Dar es Salaam serves as a gateway to several landlocked countries in East Africa, including Uganda, Rwanda, Burundi, and the Democratic Republic of Congo. Efficient logistics facilities can attract businesses from these countries looking for reliable access to international markets.

Economic Growth

- **Tanzania's Growing Economy:** Tanzania has been experiencing steady economic growth, driven by sectors such as mining, agriculture, and tourism. Increased economic activity generates higher demand for warehousing and logistics services.
- **Infrastructure Development:** The Tanzanian government is investing in infrastructure improvements, including road networks, railways, and port facilities. These investments enhance the viability of logistics operations.

Business Environment

- **Ease of Doing Business:** Tanzania has been making efforts to improve its business environment. Simplified regulatory procedures, investment incentives, and a stable political climate can attract both local and international businesses to set up operations.
- **Industrialization Agenda:** Tanzania's industrialization agenda aims to boost manufacturing and processing activities. This shift will increase the demand for storage, handling, and distribution services.

4. THE COMPANY'S OBJECTIVES

Proposed Design Plan for the Mining and General Equipment Manufacturing Center

The proposed facility is designed to be located at that property currently known and registered as Plot 62 & 63, Block "H" Kazole, Vikindu, Mkuranga, Pwani Region, Tanzania.

The proposed infrastructure development for Speedy Machinery Company Limited aims to create a state-of-the-art facility that supports diverse industrial activities while promoting regional economic growth. The development will focus on creating winning products as listed below:



Slicing Machinery

- Pre – Engineered Slicing Equipment
- Hot Rolled Steel Water and Waste Run off Machinery
- Filtration Products



Light Electrical Generators

- 1- 20 KVA Generator Sets
- Welding and Joinery Stations
- Light gauge Prefabricated Metal Buildings





Standard Product Solutions

- Steel Water Tanks
- Steel Racking Solutions



Ultimately, Speedy Machinery Company Limited aims to be a catalyst for economic transformation, creating employment opportunities and attracting both local and foreign investments. With a strategic focus on export-led growth, the development is set to position the Mining and General Equipment Manufacturing Center as a key player in enhancing Tanzania's industrial output and increasing its competitiveness in the global market



M/S Speedy Machinery Company Limited has the following objectives in the setting up of this Mining and General Equipment Manufacturing Center.

- ❖ To provide high quality industrial machinery solutions for customers in the United Republic of Tanzania;
- ❖ To provide high quality industrial machinery solutions for customers in East and Central Africa;
- ❖ To promote the availability of high quality machinery solutions at affordable pricing to all our clientele;
- ❖ **Job creation as the company will create employment opportunities;**
 - **Contract for Design and Build of the facility will be given to local Tanzania company to ensure 100% use of local labor, 100% use of local raw material and local 100% use of local content;**
 - **Top priority on employment will be given to Tanzanian Citizens as we seek to provide jobs and opportunities locally.**
- ❖ Skill development (Transfer of knowledge/human resources development) through on job training;
- ❖ Income generation;
- ❖ Improve their social welfare equally important the company contribute to the government revenue through taxes and other levies.

Job Creation and Value Addition to the Community

The Executive Management of M/s Speedy Machinery Company Limited strongly believes in job creation as well as value addition in the supply chain for the benefit of Tanzanian Citizens.



This has been achieved as below:

S/No	Item	Detailed Statement and Status to date
01	Job Creation	<p>Since its inception, the shareholders and executive management of Speedy Machinery Company Limited believes in job creation and empowerment of Tanzanian Citizens in jobs and opportunities available at the Speedy Mining and General Machinery Manufacturing Center.</p> <p>To this end we have devised clear policy that our employment policy should always consider local Citizens at all times.</p>
02	Training and Development	<p>The provision of education, training and personal development is one of those areas of our business where we have an opportunity to put something back into the local community by increasing the overall level of industry skills and knowledge and thereby increasing job prospects for individuals; thus creating increased wealth and prosperity for the longer term. Of course, this is not purely altruistic on the part of Speedy Machinery Company Limited Limited, there is also a need to bring-on, young, well trained people into the industry who can help Speedy Machinery Company Limited, grow its own business for the future.</p> <p>We have here an opportunity to utilise some of the revenues gained from the Mining and General Machinery Manufacturing Center to develop this training facility; which will directly support local communities and local businesses through an increased potential for higher skilled, higher paying careers for a significant number of young people from those local communities, thereby creating wealth and reducing local unemployment.</p>
03	Taxes and Duties as a Responsible Corporate Citizen	<p>We believe a real opportunity exists here to establish a new high quality Steel Structure Manufacturing Center. A strong local presence which will focus on the highest levels of Service Delivery for both local, regional and international customers, ensure ongoing investment in the latest</p>



		<p>equipment, technology and processes and a provider with the ability to introduce a new era in quality within the Tanzanian logistics and warehousing industry.</p> <p>As a responsible Corporate Citizen, this will generate both direct and indirect taxes as well as levies such as Service Levy, WHT, Billboard Revenues, PAYE, SDL, Corporate taxes which leads to added revenue to Government and Local Municipality</p>
--	--	--



**5. *PROPOSED IMPLEMENTATION SCHEDULE FOR THE MINING
AND GENERAL EQUIPMENT MANUFACTURING CENTER***



PHASE I (Comprising of Plant Manufacture and Road/Utility Infrastructure)	
Period	Activity Schedule
Quarter 1 Year 2026 (January to March)	Project Mobilization – Lease Signing, Contractor, Local Authorities, Work force mobilization
Quarter 2 Year 2026 (April to June)	Project Implementation – Construction Phase I
Quarter 3 Year 2026 (July to September)	Project Implementation – Construction Phase I
Quarter 4 Year 2026 (October to December)	Project Implementation – Construction Phase I
Quarter 1 Year 2027 (January to March)	Project Implementation – Construction Phase I
Quarter 2 Year 2027 (April to June)	Handover by Contractor
Quarter 3 Year 2027 (July to September)	Plant is ready for Equipment installation
Quarter 4 Year 2027 (October to December)	Test and fit out
Quarter 1 Year 2028 (January to March)	Project Phase I is fully 100% operational
READY FOR PLANT INSTALLATION	
PHASE II (Comprising of Machinery Installation)	
Period	Activity Schedule

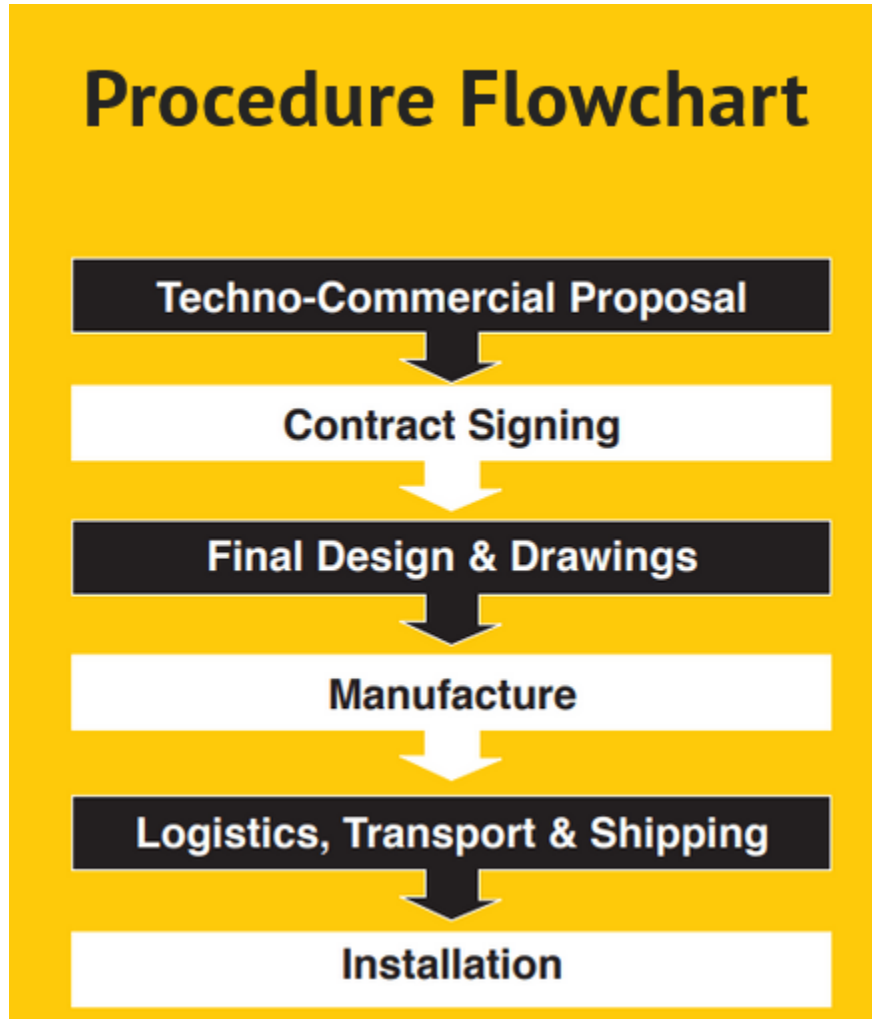


Quarter 2 Year 2028 (April to June)	Plant Machinery Installation
Quarter 3 Year 2028 (July to September)	Handover by Contractor
Quarter 4 Year 2028 (October to December)	Systems review, testing and review. Fine-tuning of operational systems.
Quarter 1 Year 2029 (January to March)	Full facility functional status Operations Commence. Open for business
Project is fully 100% operational	
READY FOR PRODUCTION	



6. PROPOSED DESIGN PLAN FOR MINING AND GENERAL EQUIPMENT MANUFACTURING CENTER TO BE CONSTRUCTED ON SITE

Our scheme of work is as detailed below for production facilities to be constructed for our Mining and General Equipment Manufacturing Center.



7. CAPITAL INVESTMENT COST

Projected capital requirements for Phase I and II of the project are highlighted below. We envisage a balanced mix of shareholder equity and external financing if required from banks.



Our expected capital to asset ratio is within desired capital adequacy ratio designed to promote adequacy of the operations.

These projections are highlighted below.

S/No	Source of Capital	Projected Amount (In USD)
01	Shareholders' Equity - Lease and Construction	1,200,000.00
Total Projected Equity/Capital for the Project		1,200,000.00
		United States Dollar One Million, Two Hundred Thousand Only

8. FINANCIAL PLAN AND USE OF FUNDS

Projected expenditure for the project inclusive of startup costs are highlighted as structured below:

GENERAL ASSUMPTIONS

The Company has the following key assumptions which guide this investment decision.

- A steady exponential growth curve based on market demand for our products in East and Central Africa;
- Fixed facilities costs which do not fluctuate with more than 10% deviation;
 - a) New age technological tools and equipment designed to meet and match Capacity Utilization and capacity needs.



- **SALES FORECAST**

The company envisages a conservative sales forecast of 74% capacity utilization within a 7-day work week. This is well within similar Manufacture industry estimates of eighty (80%) percent capacity utilization.

We however estimate that we shall start at a conservative figure of twenty (20) percent gradually increase reaching peak occupancy of eighty-eight (88%) percent peak average daily.

Based on performance metrics we believe we can incorporate a wholly automated design department with CNE Engineering capability within our facility in a span of 3 years based on the strength of in-house experience, production stabilization and economies of scale.

This translates to estimated sales unit of

**Capacity of facility based on design of facility and production systems installed:
1200 units available**

**Utilization at 70% capacity = 70 Units available per Month X 12 Months = 840 Units
Capacity sold Annually**

Units Produced Annually	Sale Price Per Unit	Projected Annual Revenue
840 Units Capacity	2,760,000 Tshs. Per Unit Item (average pricing)	2,318,400,000.00
Projected Annual Revenue		2,318,400,000.00
		Tanzania Shillings Two Billion, Three Hundred and Eighteen Million, Four Hundred Thousand Shillings Only

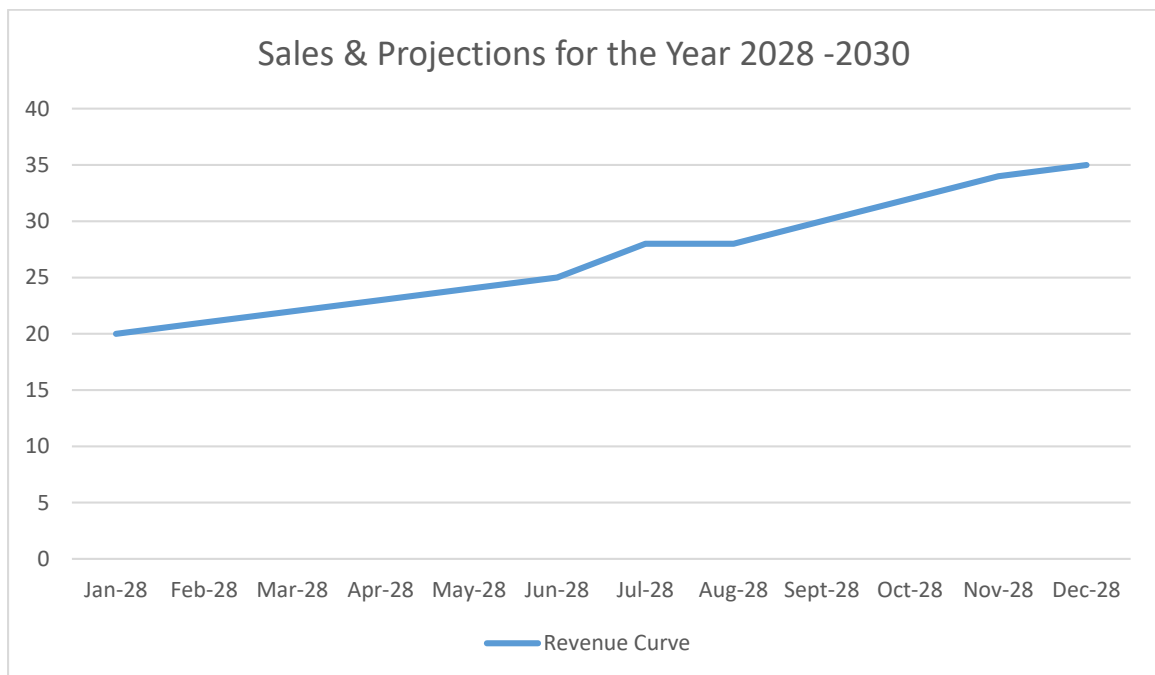


This projection also does not quantify expected revenue from the below streams of income namely:

- Industrial Park Clients situated near our premises
- Support Industries who rely on the manufacturing component from the industries located on site
- Design and Related Consultation Revenue
- Installation and related Revenue
- Specialized Cargo
- E- Commerce clients who can use our facility for inventory management

These are conservatively expected to bring in at least and extra 15% of total revenue for the establishment.

Our projected Year on Year growth curve once the project is fully operational would be as below:





- **STARTUP COSTS**

Envisaged start-up costs for the project are highlighted as below.

S/No	Detailed Start Up Costs	Projected Amount (In USD)
01	Long term land lease	230,000.00
02	Buildings Construction	500,000.00
03	Vehicles	60,000.00
04	Operational Equipment & Fittings	50,000.00
05	Pre- Expenses	100,000.00
06	Others	60,000.00
07	Working Capital	200,000.00
Detailed Start Up Costs for the Project		1,200,000.00
		United States Dollar One Million, Two Hundred Thousand Only

- **RUNNING COSTS**

Envisaged running costs for the project once operational are highlighted as below per month

PROFORMA RUNNING COSTS

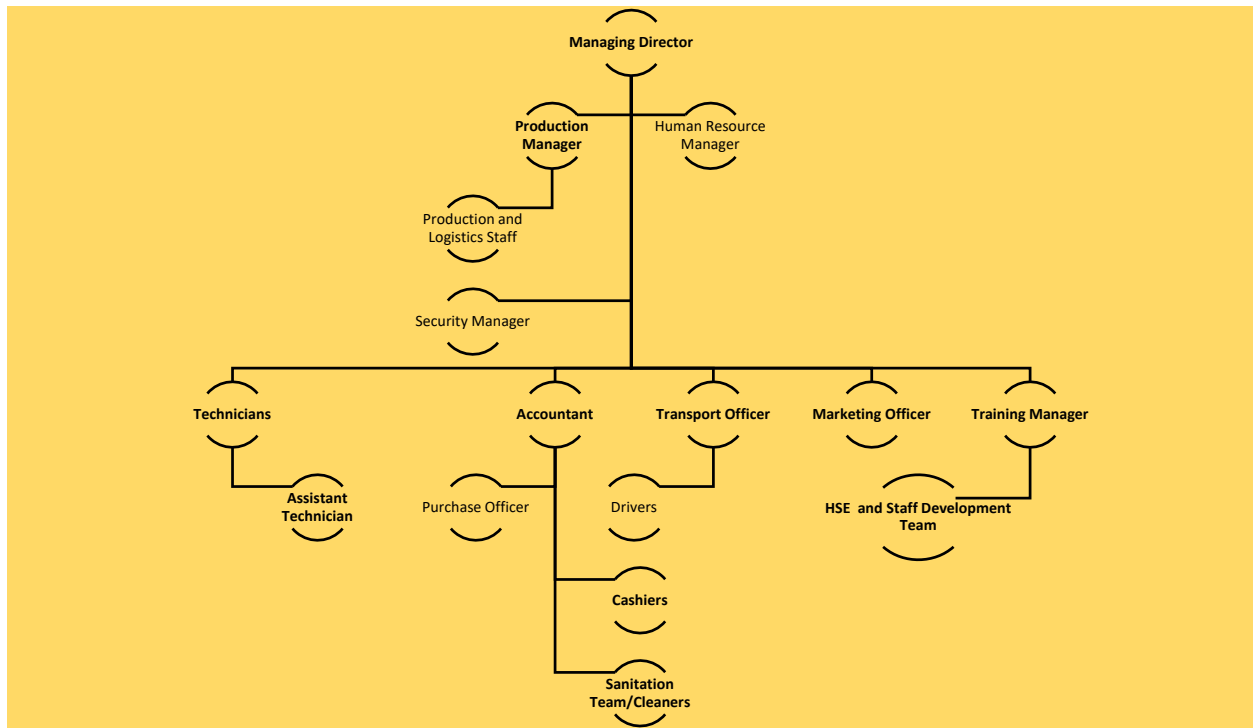
S/No	Description	Projected Expenditure per Month (In Tanzania Shillings)
Production Costs	Electricity	5,000,000.00
Production Costs	Security Services, Plant Management Services	63,000,000.00
Administrative Costs	Admin Expenses	2,500,000.00
Administrative Costs	Finance Costs	4,000,000.00
Payroll Expenses	Salaries and Wages	32,200,000.00
Total Monthly Running Costs for the Project		106,700,000.00



	Tanzania Shillings One Hundred and Six Million, Seven Hundred Thousand Only
--	---

- ORGANIZATION STRUCTURE & PROJECTED PAYROLL COSTS**

A detailed Organization Structure inclusive of payroll details is listed below



S/No	Position	Number of Employees	Gross Salary	Total Gross Salary
01	Managing Director	1	2,000,000	2,000,000.00
02	Production & Logistics Manager	1	1,000,000	1,000,000.00
03	Human Resource Manager	1	1,000,000	1,000,000.00
04	Training Manager	1	1,000,000	1,000,000.00



05	Security Manager	1	800,000	800,000.00
06	Technicians	6	600,000	3,600,000.00
07	HSE and Staff Development Team	9	600,000	4,500,000.00
08	Production and Logistics Team	15	500,000	7,500,000.00
04	Assistant Technicians	4	400,000	1,600,000.00
05	Cashiers	2	200,000	400,000.00
06	Accountant	1	1,000,000	1,000,000.00
07	Drivers	2	500,000	1,000,000.00
08	Marketing Officer	1	500,000	500,000.00
09	Sanitation/Cleaners	7	300,000	2,100,000.00
	Gross Salary Expenses			28,000,000.00
	NSSF Liability			2,800,000.00
	WCF Liability			280,000.00
	SDL Liability			1,120,000.00
			Total Salary and Wages Cost	32,200,000.00

- **CASH FLOW FORECAST ONCE OPERATIONAL**

Based on projected production figures; our cash flow forecast for the project in its initial year of operations has been split into 4 stages to match production capacity.

Quarter 1 – Year 2028 (January to March)

SPEEDY MACHINERY COMPANY LIMITED					
PROJECTED CASHFLOW FOR FINANCIAL YEAR 2028 – QUARTER 1 (JAN - MARCH 2028)					
CAPACITY UTILIZATION – 35% CAPACITY					
	Quarter 1 Year 2028 January	Quarter 1 Year 2028 February	Quarter 1 Year 2028 March		QUARTER 1 YEAR 2028 YTD
Revenue					
Unit Selling Price	2,760,000.00	2,760,000.00	2,760,000.00		2,760,000.00
Production Capacity	24.5	24.5	24.5		48,300



Expected Sales p/month	67,620,000	67,620,000	67,620,000			202,860,000.00
LESS: Direct Costs Allocation	63,000,000	63,000,000	63,000,000			189,000,000.00
Gross Profit	4,320,000	4,320,000	4,320,000			13,860,000.00
Payroll	32,200,000	32,200,000	32,200,000			96,600,000.00
Admin Costs	2,500,000	2,500,000	2,500,000			7,500,000.00
Electricity	5,000,000	5,000,000	5,000,000			15,000,000.00
Finance Costs	4,000,000	4,000,000	4,000,000			12,000,000.00
Net Profit before Tax	(39,080,000.00)	(39,080,000.00)	(39,080,000.00)			(117,240,000.00)
Corporate Tax @ 30 Percent						
Net Loss	(39,080,000.00)	(39,080,000.00)	(39,080,000.00)			(117,240,000.00)

Quarter 2 – Year 2028 (March to June)

SPEEDY MACHINERY COMPANY LIMITED					
PROJECTED CASHFLOW FOR FINANCIAL YEAR 2028 – QUARTER 2 (MARCH TO JUNE 2028)					
CAPACITY UTILIZATION – 55% CAPACITY					
	Quarter 2 Year 2028 April	Quarter 2 Year 2028 May	Quarter 1 Year 2028 June		QUARTER 1 YEAR 2028 YTD
Revenue					



Unit Selling Price	2,760,000.00	2,760,000.00	2,760,000.00		2,760,000.00
Units	38.5	38.5	38.5		115.5
Expected Sales p/month	106,260,000	106,260,000	106,260,000		318,780,000.00
LESS: Direct Costs Allocation	63,000,000	63,000,000	63,000,000		189,000,000.00
Gross Profit	43,260,000	43,260,000	43,260,000		129,780,000.00
Payroll	32,200,000	32,200,000	32,200,000		96,600,000.00
Admin Costs	2,500,000	2,500,000	2,500,000		7,500,000.00
Electricity	5,000,000	5,000,000	5,000,000		15,000,000.00
Finance Costs	4,000,000	4,000,000	4,000,000		12,000,000.00
Net Profit before Tax	(440,000.00)	(440,000.00)	(440,000.00)		(1,320,000.00)
Corporate Tax @ 30 Percent	13,650,000	13,650,000	13,650,000		40,950,000.00
Net Profit	(440,000.00)	(440,000.00)	(440,000.00)		(1,320,000.00)

Quarter 3 – Year 2028 (July to August)

SPEEDY MACHINERY COMPANY LIMITED					
PROJECTED CASHFLOW FOR FINANCIAL YEAR 2028 – QUARTER 3 (JULY TO AUGUST 2028)					
CAPACITY UTILIZATION – 65% CAPACITY					
	Quarter 3	Quarter 3	Quarter 3		QUARTER 3



	Year 2028 July	Year 2028 August	Year 2028 September			YEAR 2028 YTD
Revenue						
Unit Selling Price	2,760,000.00	2,760,000.00	2,760,000.00			2,760,000.00
Units	45.5	45.5	45.5			136.5
Expected Sales p/month	125,580,000	125,580,000	125,580,000			376,740,000.00
LESS: Direct Costs Allocation	63,000,000	63,000,000	63,000,000			189,000,000.00
Gross Profit	62,580,000	62,580,000	62,580,000			187,740,000.00
Payroll	32,200,000	32,200,000	32,200,000			96,600,000.00
Admin Costs	2,500,000	2,500,000	2,500,000			7,500,000.00
Electricity	5,000,000	5,000,000	5,000,000			15,000,000.00
Finance Costs	4,000,000	4,000,000	4,000,000			12,000,000.00
Net Profit before Tax	18,880,000.00	18,880,000.00	18,880,000.00			56,640,000.00
PROJECT BREAK EVEN BY QUARTER 3 YEAR 2028						
Corporate Tax @ 30 Percent	5,664,000	5,664,000	5,664,000			16,992,000.00
Net Profit	13,216,000	13,216,000	13,216,000			39,648,000.00

Quarter 4 – Year 2028 (October to December)



SPEEDY MACHINERY COMPANY LIMITED					
PROJECTED CASHFLOW FOR FINANCIAL YEAR 2028 – QUARTER 4 (OCTOBER TO DECEMBER 2028)					
CAPACITY UTILIZATION – 75% CAPACITY					
	Quarter 4 Year 2028 October	Quarter 4 Year 2028 November	Quarter 4 Year 2028 December		QUARTER 4 YEAR 2028 YTD
Revenue					
Unit Selling Price	2,760,000.00	2,760,000.00	2,760,000.00		2,760,000.00
Units	52.5	52.5	52.5		157.5
Expected Sales p/month	144,900,000	144,900,000	144,900,000		434,700,000.00
LESS: Direct Costs Allocation	63,000,000	63,000,000	63,000,000		189,000,000.00
Gross Profit	81,900,000	81,900,000	81,900,000		245,700,000.00
Payroll	32,200,000	32,200,000	32,200,000		96,600,000.00
Admin Costs	2,500,000	2,500,000	2,500,000		7,500,000.00
Electricity	5,000,000	5,000,000	5,000,000		15,000,000.00
Finance Costs	4,000,000	4,000,000	4,000,000		12,000,000.00
Net Profit before Tax	38,200,000.00	38,200,000.00	38,200,000.00		114,600,000.00
Corporate Tax @ 30 Percent	11,460,000	11,460,000	11,460,000		34,380,000.00
Net Profit	26,740,000	26,740,000	26,740,000		80,220,000.00



SPEEDY MACHINERY COMPANY LIMITED

5 YEAR FINANCIAL PROJECTIONS



SPEEDY MACHINERY COMPANY LIMITED						
5 YEAR FINANCIAL PLANNING – PROFORMA PROFIT & LOSS YEAR 2028 to 2032						
SPEEDY MACHINERY MANUFACTURING CENTER – PLOT 62 & 63, BLOCK “H” VIKINDU, MKURANGA, PWANI REGION, TANZANIA						
	Year 2028	Year 2029	Year 2030	Year 2031	Year 2032	YTD 5+
Revenue						
Unit Selling Price	2,760,000	2,760,000	2,760,000	2,760,000	2,760,000	2,760,000
	848	848	848	848	848	848
Expected Sales	2,340,000,000	2,340,000,000	2,340,000,000	2,340,000,000	2,340,000,000	11,700,000,000.00
LESS: Direct Costs Allocation	889,000,000	952,000,000	952,000,000	952,000,000	952,000,000	4,697,000,000.00
Gross Profit	1,451,000,000	1,388,000,000	1,388,000,000	1,388,000,000	1,388,000,000	7,003,000,000.00
Payroll	96,600,000	386,400,000	386,400,000	386,400,000	386,400,000	1,642,200,000.00
Admin Costs	7,500,000	30,000,000	30,000,000	30,000,000	30,000,000	127,500,000.00
Electricity	15,000,000	60,000,000	60,000,000	60,000,000	60,000,000	255,000,000.00
Finance Costs	12,000,000	48,000,000	48,000,000	48,000,000	48,000,000	204,000,000.00
Net Profit/Loss before Tax	1,319,900,000	863,600,000	863,600,000	863,600,000	863,600,000	4,774,300,000.00
Corporate Tax @ 30 Percent	395,970,000	259,080,000	259,080,000	259,080,000	259,080,000	1,432,290,000.00
Net Profit	923,930,000	604,520,000	604,520,000	604,520,000	604,520,000	3,342,010,000.00